

GLOBAL

WF 1515 VF-AUT

Instruction & Parts manual

Always switch off the electricity when working on
the machine.

1 Catalog

Instructions	1
1. Brief Introduction	2
2. Specification	2
3. Assembling	2
4. Adjustment of belt tension	3
5. Assembling for belt cover	3
6. Oiling	3
7. Adjustment for oiling amount of hook	4
8. Oil regulation	4
9. Assembling for the needle	5
10. Threading for the button thread	5
11. Thread wrapping	5
12. Threading	6
13. Adjustment of stitch length	6
14. Tension adjustment	6
15. Presser foot lifting	7
16. Adjustment for needle base of the hook	7
17. Restoration for the safety	8
18. Adjustment for stitch length	8
19. Relation of needle and hook	9
20. Sewing speed schedule	9
21. Problem and method	10

目录2 Catalog

零件手册PARTS BOOK

1. Frame & miscellaneous cover	12
2. Pick up and upper shaft components	14
3. Needle bar rocking	16
4. Pressure adjusting & upper feed mechanism	18
5. Feed mechanism	22
6. Hook shaft & upper feed mechanism	26
7. Thread cutting components	28
8. Thread tension components	30
9. Threa release components	31
10. Knee lifting components	32
11. Lower thread winder mechanism component	33
12. Lubrication components	34
13. VF components	36
14. Automatic presser lifting mechanism components	40
15. Autimatic back components	41
16. DL mechanism components	42
17. Air mechanism components	43
18. Accessories parts components	44
19. Thread stand components	45

Manual

1. Brief Introduction

The machine adopts three synchronous feeding and special feed dog construction to make the grade ability perform well. Therefore, the strong feeding ability for heavy duty material can sew smooth, average, neat and beautiful stitch. It adopts large hook, slider thread taking-up, upper and lower axis synchronous belt transmission, so that it make sure low noisy in high speed.

The machine is applied in the carseat mats, sofa, leather bags, tents and so on.

2. Specification

Appilication	heavy duty
Max sewing speed	2000spm
Max sitich lengt	9mm
Needle bar strok	36mm
Needle type	DPX17 (Nm110~Nm180) Standard Nm110 (18#)
Lubrication	by oil line (automatic oiling of hook)
Hook	Self-lubricating hook
Presser foot hei	Manual 9mm Knee control 16mm
Motor power	750W

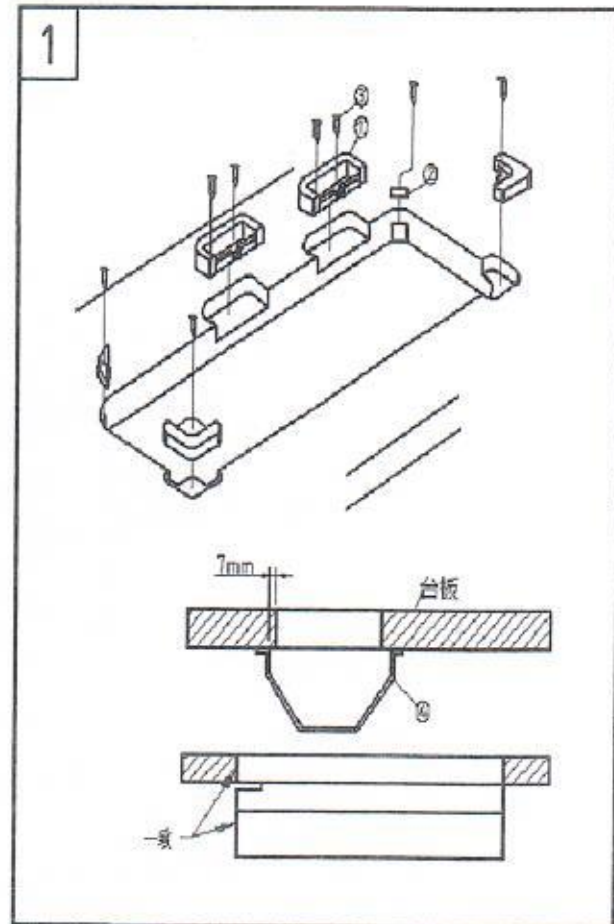
3. Assembling (Picture 1)

1)Assembling for onnector of achine head and table, machine head rubber mats, and so on.

Connect the screw 3 to the hookbase 1, and the rubber mat 2 fix on the table.

2)Assembling for oil tray .

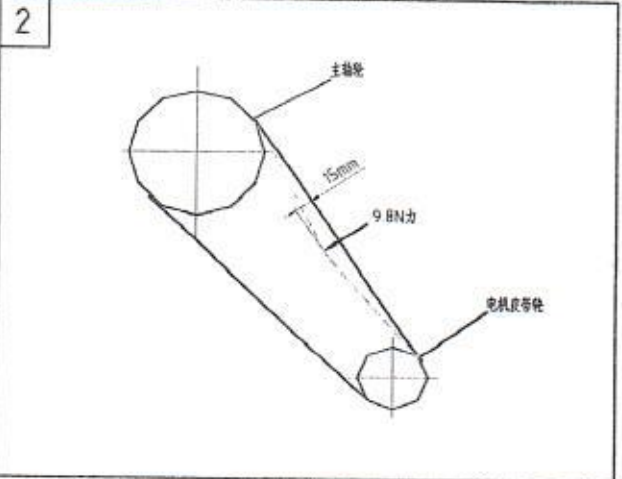
Fix the oil tray on the table as the showing position by eight wood screws.



4. Adjustment of belt tension

To adjust the belt tension, pls move the motor height, and use the pressing power 9.8N to press at the middle of the belt, then the looseness amount would be 15mm.

Remark: please close the power before adjustment, make sure the motor stop running.

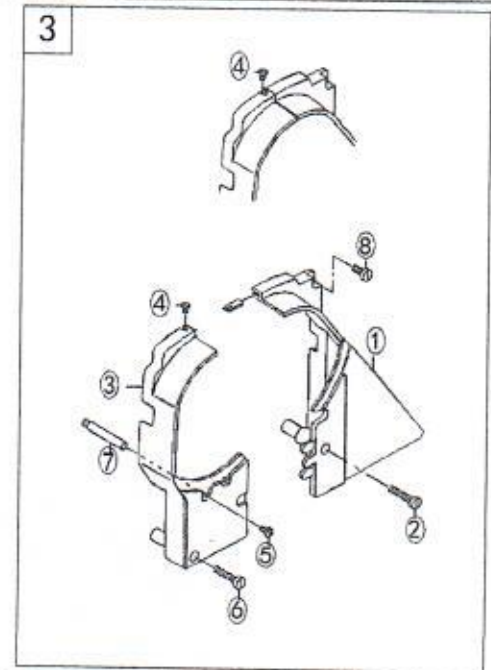


5. Assembling for belt cover

- 1) Wrest the belt cover brace 7 to the screw hole of the machine head.
- 2) Use the fixing screw 2 and 8 to fix the belt cover (right) 1 on the machine head.
- 3) Put the belt cover (left) 3 on the AB part of belt cover (right) 1.

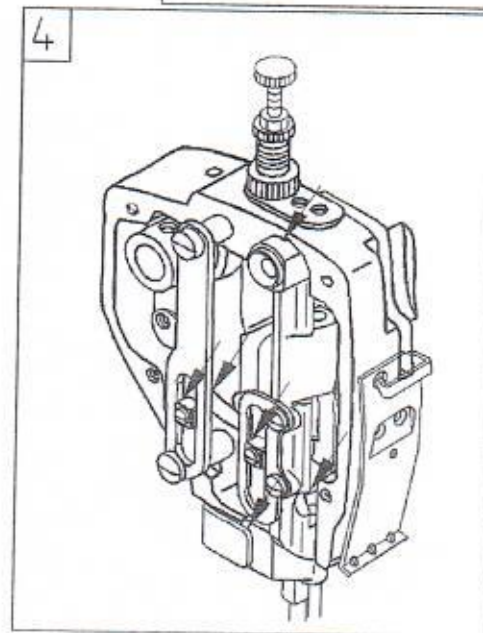
- 4) Fix the screw 4, 5 and 6 to the belt cover (left) 3.

Remark: when finishing assembling, please confirm the belt cover can not touch the belt and main wheel.



6. Oiling

- 1) oiling for the front of machine head. (Picture 4)
 - A. Wreast the cover screw.
 - B. Remove the cover .
 - C. Oiling properly as the direction everyday.
 - D. Close the cover.
 - E. Wreast and tight the screw.

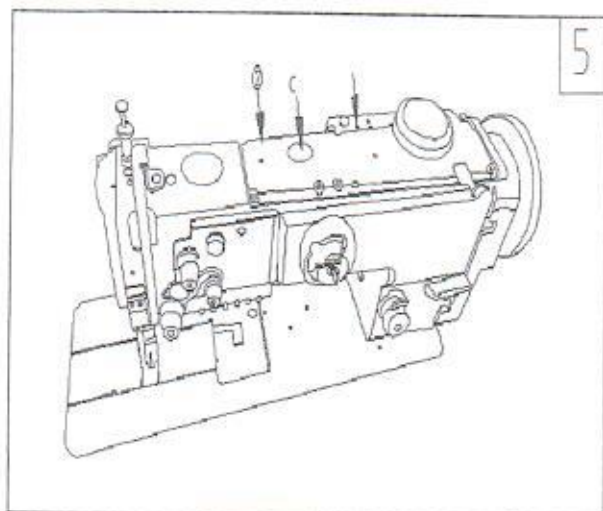


2) Oiling for machine head (Picture 5)

A. Oiling properly as the direction everyday.

B. For first running or non-use for long time, please add the oil as the direction and remove the cover 2 to add proper oil on each felt and oil line.

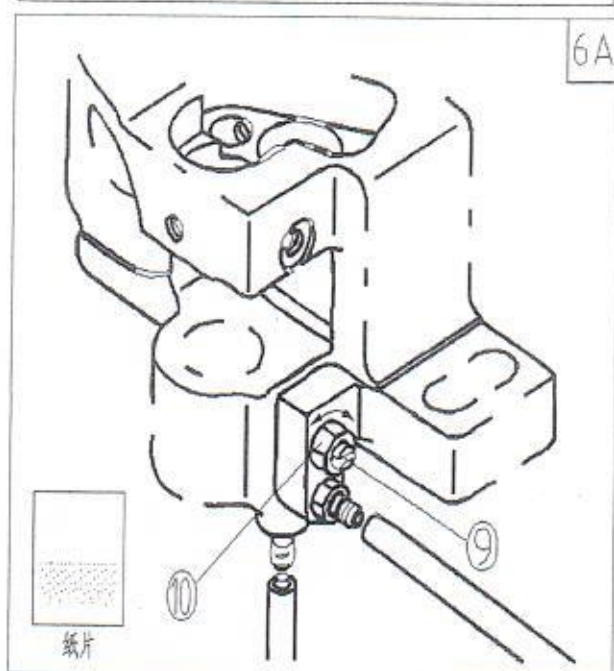
C. C is oil surface observation oil box. You can check the operation of the oil pump.



7. Adjustment for oiling amount of hook (Picture 6A)

1) When adjust the amount of the hook, please loose the nut 10. Use screw 9 to adjust. The clockwise runing will get less, and anticlockise will get more.

2) Put the paper around the hook for five seconds. Once the oil trail are shown as the picture, that means proper amount.



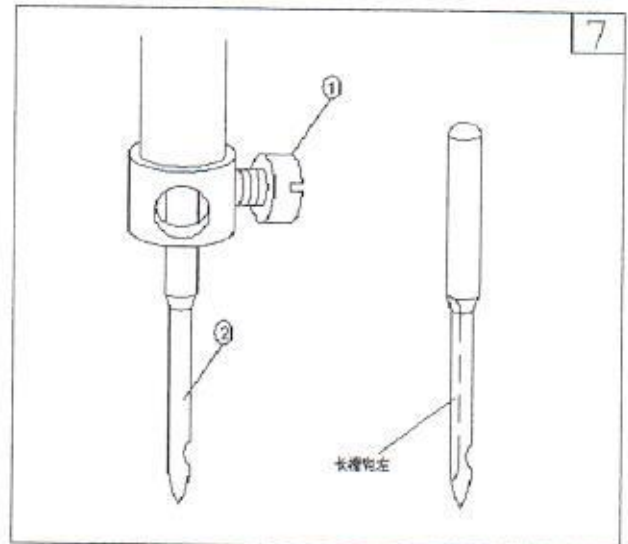
8. Oil regulation (Picture 6B)

When oil tank oil quantity is too much, please loosen the nut, adjust the oil screw Counterclockwise rotation. When the oil is too small, please adjust the screw clockwise rotation. Then tighten the nut .



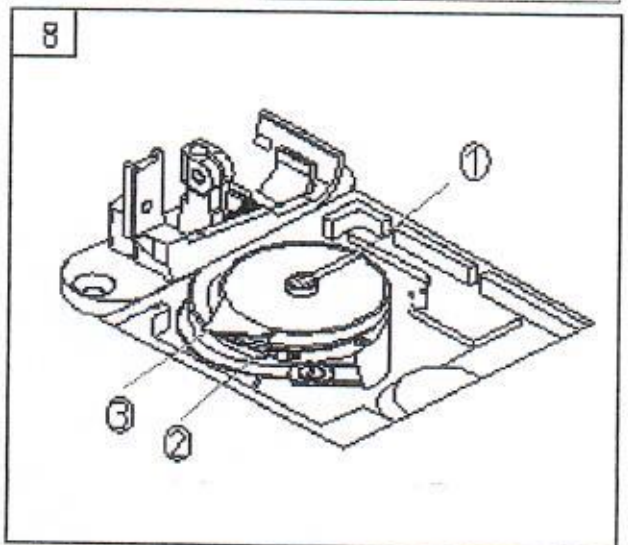
9. Assembling for the needle (Picture 7)

- 1) Run the main wheel and lift the needle bar to the highest position.
- 2) Loose the needle screw 1, and make the long slot of needle 2 direct at the left side.
- 3) Put the needle in it.
- 4) Wrest the needle and fix the screw 1.



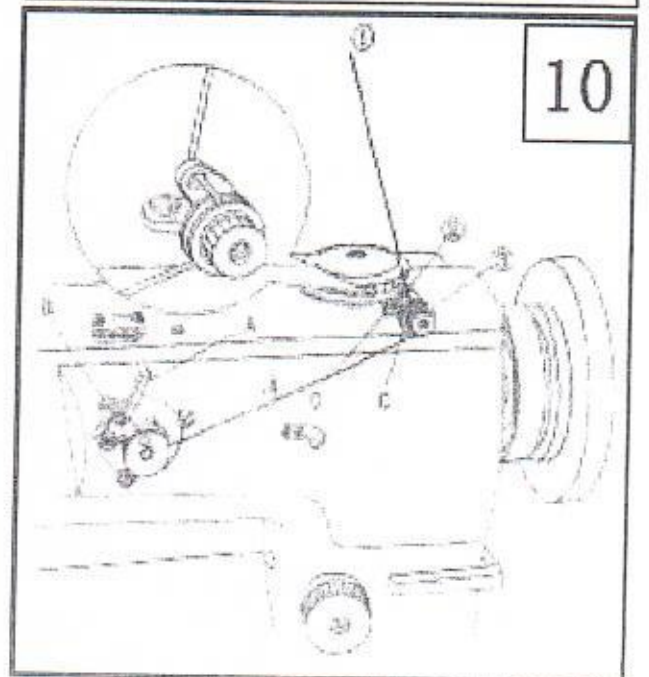
10. Threading for the bottom thread (Picture 8)

- 1) Pull the plectrum 1 of hook, and take out the bobbin.
- 2) When putting inside, insert correctly into the hook shaft, and put down the plectrum.
- 3) Inlay the thread to the threading slot 2, and put through the part 3, then pull into the tension spring.
- 4) Pull the bottom thread and the bobbin should be run as the direction in the picture.



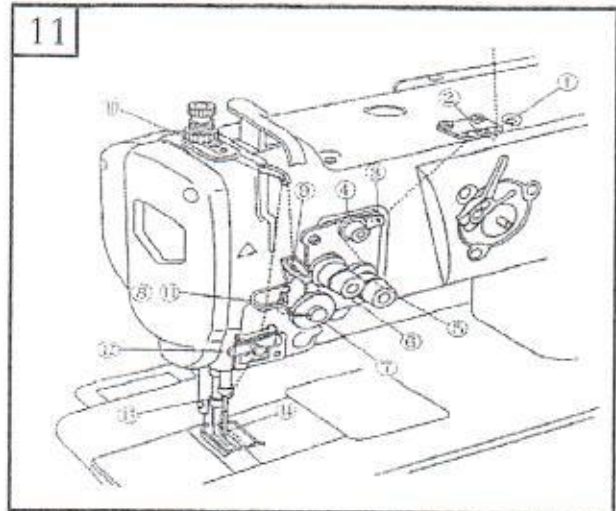
11. Thread wrapping (Picture 10)

- 1) Threading in the sequence from 1 to 3, and circle around the bobbin.
- 2) Put down the bobbin winder A.
- 3) Loose the screw B, adjust the plate to the 80% position.
- 4) When it's leaning, move the thread guide C and adjust in the front and back, then fix the screw D again.
- 5) Finish wrapping and remove the bobbin winder, it will stop automatically.



12. Threading (Picture 11)

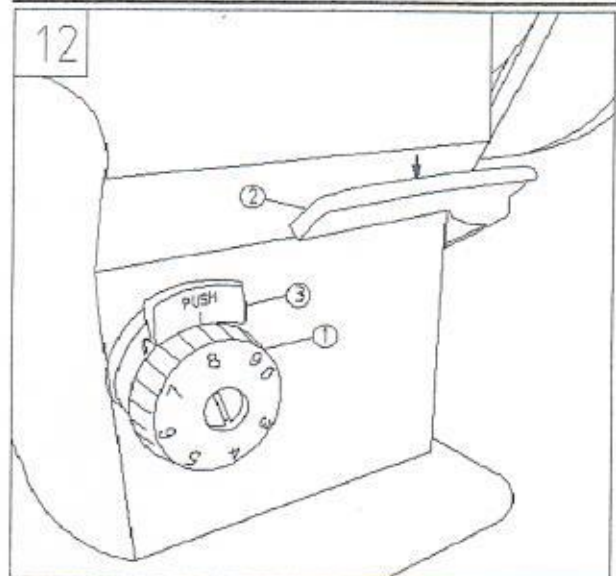
Threading as the sequence in the picture.



13. Adjustment of stitch length (12)

Turn the feeding adjustment tray 1 to left (right) side, make the mark on the necessary No.

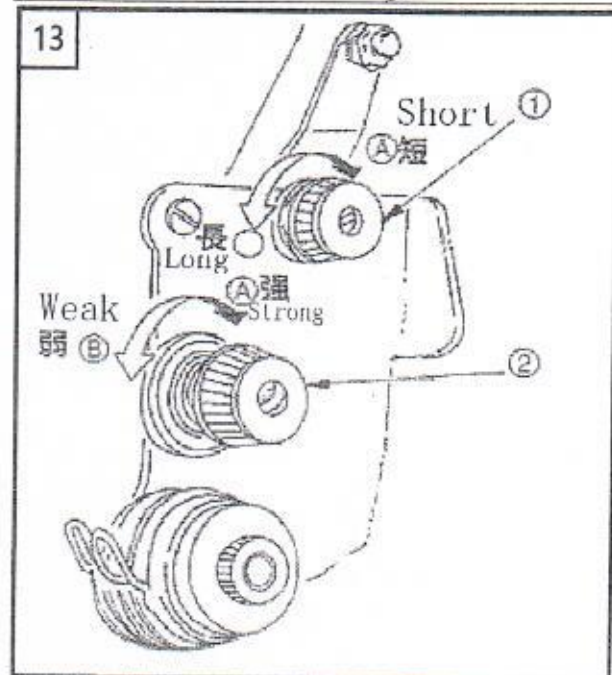
Press down the bartacking handle 2 to start reverse sewing. when loose it, you can finish normal sewing.



14. Tension adjustment

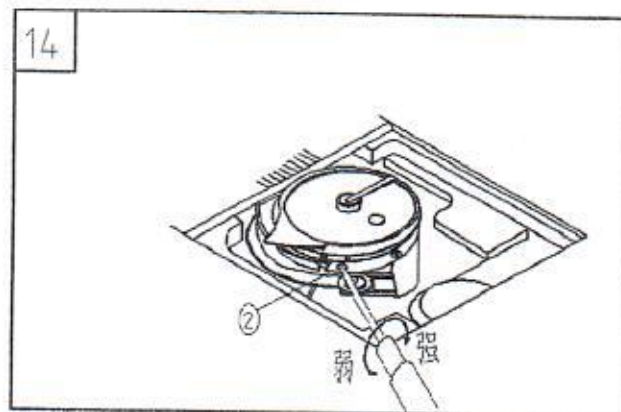
1) Upper Tension adjustment (Picture 13).

Turn the tension nut 1 at clockwise direction, the upper tension will stronger; at the anticlockwise direction, the tension will weaker.



2) Bottom tension adjustment (Picture 14)

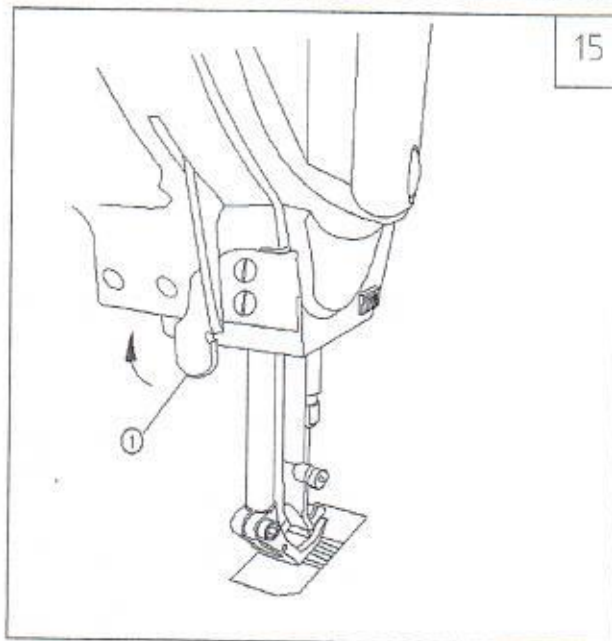
Turn the tension screw 2 at the clockwise direction, the bottom tension will be stronger; at the anticlockwise direction, the tension will be weaker.



15. Presser foot lifting (Picture 15)

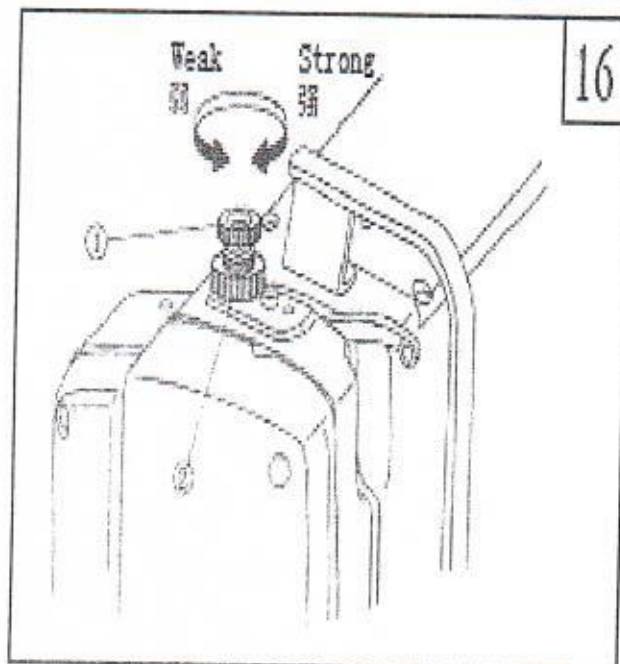
1. Keep the presser foot at the lifting position and lift up the bar 1 at the direction in the picture, then the presser foot would lift up 9mm and stop.

2. When put down the presser foot, then let the presser handle down. It would return the original position.



16. Adjustment for pressure of presser foot (Picture 16)

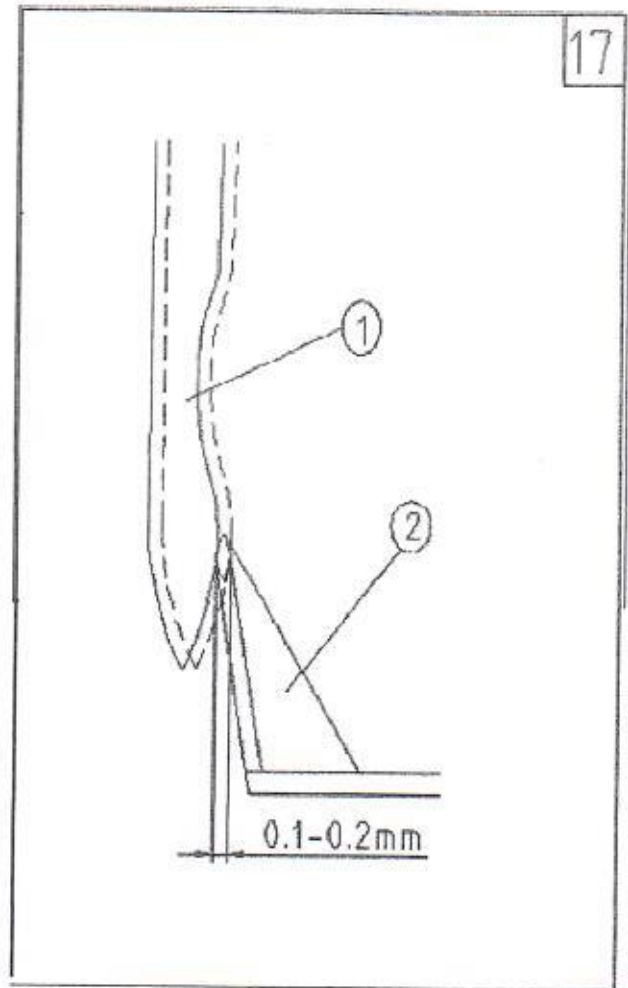
A. Turn the screw 1 at right side, the pressure would be stronger, turn left would be weaker. After adjusting, tight the fixing nut 2.



17. Adjustment for needle base of the hook (Picture 17)

After changing the hook, please the position of the needle base. When in the standard position, needle base 2 touch the side of needle, near the needle about 0.1-0.2mm. If it's not correct, please make the needle base to curve and adjust.

- 1) Needle base is curve inside, insert the screwdriver into the outside of needle base.
- 2) Needle base is curve outside, insert the screwdriver into the inner side of needle base.

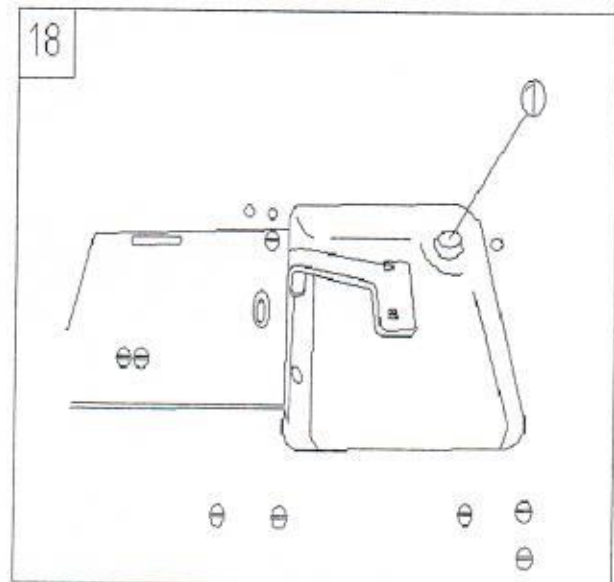


18. Restoration for the safety device (Picture 18)

During the sewing, the safety device will start when the hook get over pressure. Then the moving wheel hook will not work. After opening the safety device, please exclude the broken reasons and do the restoration.

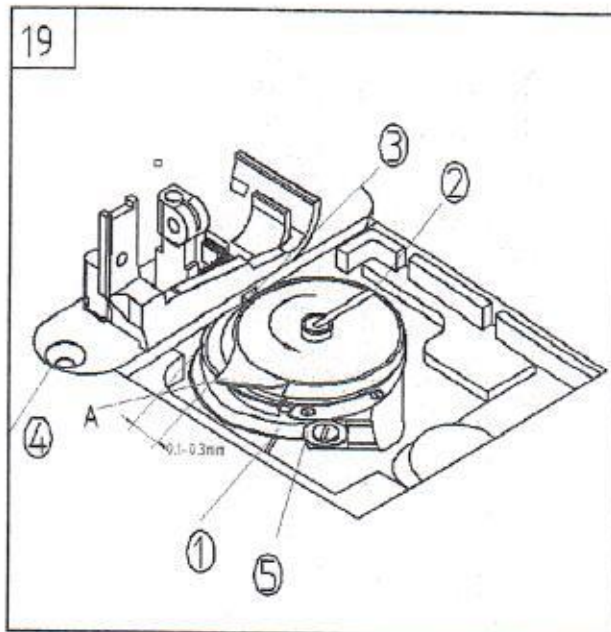
- 1) Press down the button 1 of the machine head, and reverse the main wheel.
- 2) After the voice, restoration would be finished.

Remark: Turn the wheel by hand while finish, to make sure button 1 to be restoration.



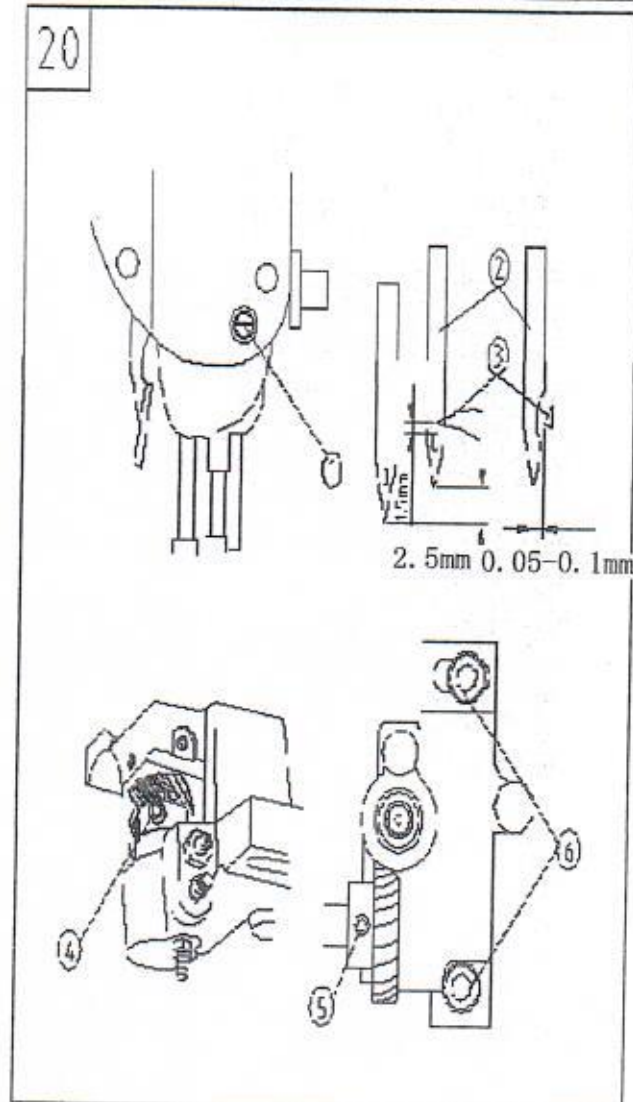
19. Adjustment for stitch length
(Picture 19)

- 1) Turn the main wheel at the normal direction, move the hook guide 1 to the last position.
- 2) Turn 2 at the direction in the picture, let the stopping part 3 touch the needle slot.
- 3) Loose the screw 5, adjust the distance to be 0.1-0.3mm between hook guide and bobbin case part A.



20. Relation of needle and hook (Picture 20)

- 1) Adjust the stitch length adjusting dial to be 0.
- 2) Turn the main wheel, lift up 2.3mm from the lowest position of needle bar. Loose the needle bar connector screw 1, adjust the distance to be 1.5mm between the end of needle 2 hole to the end of hook 3, then tight it.
- 3) When the hook end 3 and the center of needle 2 in the accordance position, loose the screw 6 of the hook shaft, move the shaft at left or right side, make the distance to be 0.05-0.1mm, and tight the screw 6.
- 4) Turn the main wheel, lift up 2.3mm from the lowest position of the needle bar. Keep the hook end 3 and the center of needle 2 to be accordance, then tight two screw 4 of the wheel gear (small). To make the first screw in the V shape into the hook shaft also in V shape, and fix it.
- 5) Loose two screws 5 of the wheel gear (big), move it at left and right side. Keep the hook end 3 and the center of needle 2 to be accordance, then tight screw 5. Fix the first screw of the two screws 5, and align on the flat part of the bottom shaft, then tight it.

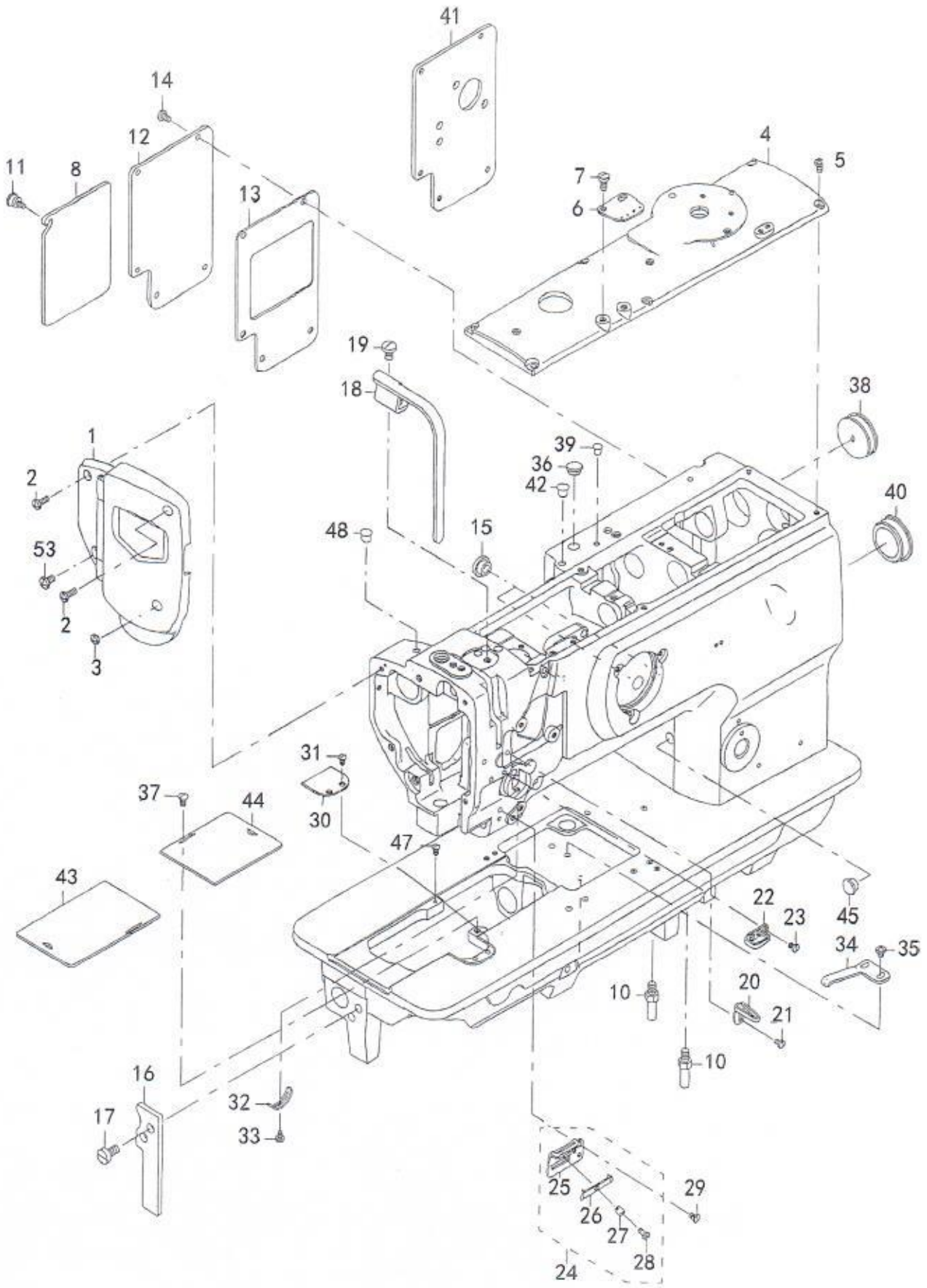


21. Problem and method

Situation	Reason	Method
<p>1) thread broken</p> <p>(left 2-3mm at the back of material)</p>	<p>1)There is scar from thread way, needle end, hook end and the hook inside circle.</p> <p>2)Upper thread tension is strong.</p> <p>3)Needle touch the hook end.</p> <p>4)Oil amount of hook is small.</p> <p>5)Upper thread tension is too weak.</p> <p>6)Taking-up spring is too strong, the movement amount is too small.</p> <p>7)Needle and hook run at the same time are too fast or too slow.</p>	<p>1)Use the emery paper to deal with scar.Use the files to deal with the inside circle of hook.</p> <p>2)Make the upper thread weaker.</p> <p>3)Please check No.17 Adjustment for needle base of the hook and No.20 the relation between needle and hook</p> <p>4)Adjust the oil amount (as per No.7 oiling).</p> <p>5)Increase the upper thread tension .</p> <p>6)Make the taking-up spring weaker, enlarge the movement amount.</p> <p>7)As per No.20 the relation between needle and hook.</p>
<p>2) thread jumping</p>	<p>1)Needle and hook run at the same time are too fast or too slow.</p> <p>2) The pressure of presser foot is too weak.</p> <p>3)the distance between needle hole and hook end is not correct.</p> <p>4)Needle type is not correct.</p>	<p>1) As per No.20 the relation between needle and hook.</p> <p>2)Tight the presser foot adjusting screw.</p> <p>3)As per No.20 the relation between needle and hook.</p> <p>4)Change another large needle.</p>
<p>3) tight thread</p>	<p>1)The tension spring of bobbin case have no</p> <p>2)Processing of thread way is not good.</p> <p>3)The bobbin can not slide .</p> <p>4)Bottom thread is too weak.</p> <p>5)Bottom thread is too</p> <p>6)Needle end damage .</p>	<p>1)The tension spring of bobbin case have no threading.</p> <p>2)Processing of thread way is not good.</p> <p>3)The bobbin can not slide .</p> <p>4)Bottom thread is too weak .</p> <p>5)Bottom thread is too strong.</p> <p>6)Needle end damage.</p>

Parts book

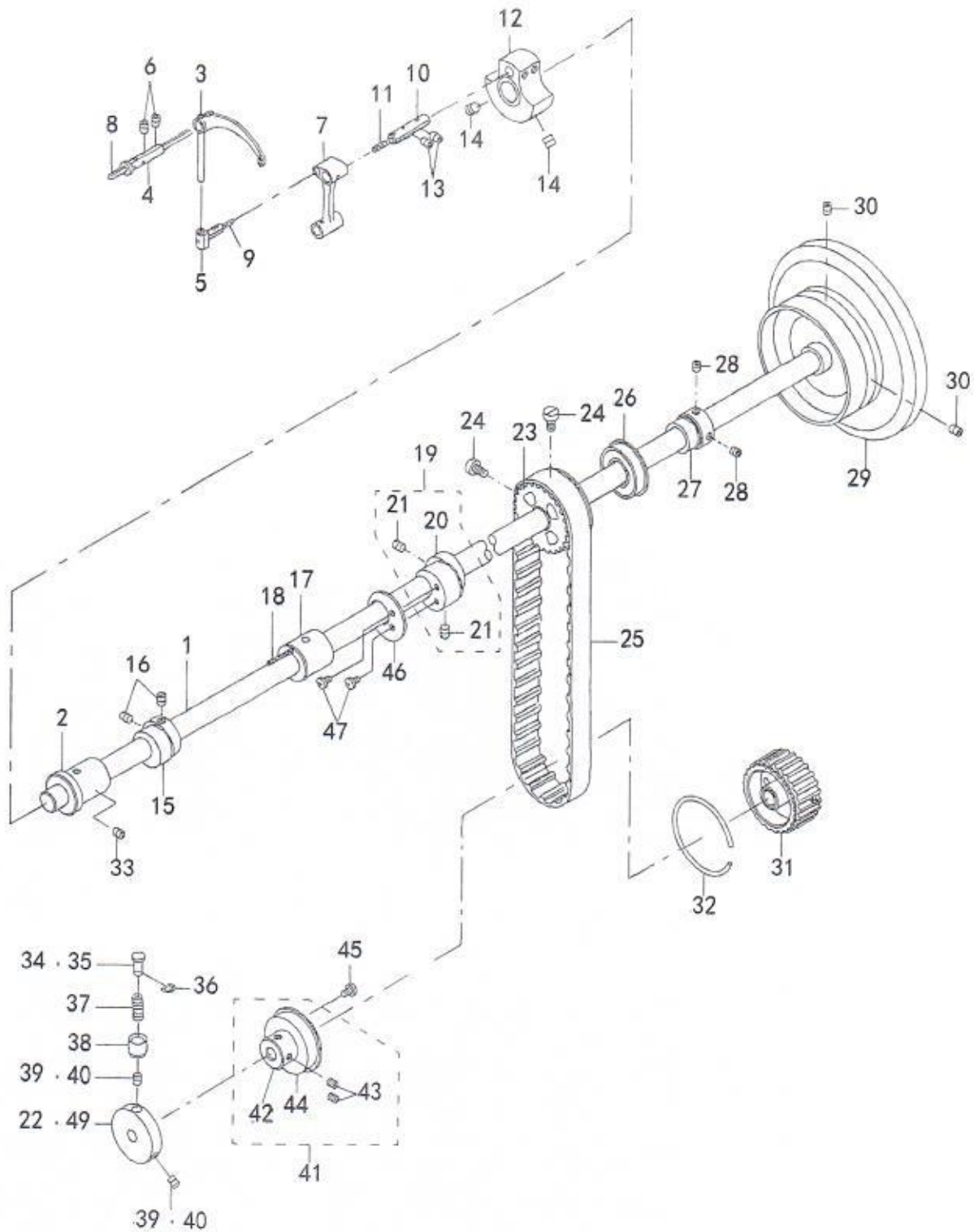
1. Frame & miscellaneous cover



1		40016798	FACE PLATE ASM.	1
2		SS4111215SP	SCREW 11/64-40 L=12	2
3		40019114	LUBRICATION SUPPLEMENT	1
4		21331301	TOP COVER B	1
5		SS4110815SP	SCREW 11/64-40 L=8	6
6		21355904	ARM THREAD GUIDE	1
7		SS7621040SP	SCREW 3/16-32 L= 9.5	2
8	#01	21331756	WINDOW PLATE A ASM.	1
9		SS2110920TP	SCREW 11/64-40 L=8.5	1
10		22602601	BED SCREW STUD	2
11		21331202	SETSCREW	1
12	#01	21331806	WINDOW PLATE B	1
13	#01	21332002	WINDOW PLATE PACKING B	1
14		SS4110815SP	SCREW 11/64-40 L=8	5
15		TA1250504RO	RUBBER PLUG	2
16		21361407	BED SUPPORT PLATE	1
17		SS6151210SP	SCREW 15/64-28 L=12	2
18		21331608	BALANCE COVER	1
19		SS7150910TP	SCREW 15/64-28 L=9	1
20		21355805	THREAD GUIDE	1
21		SS5090610SP	SCREW 9/64-40 L=6	1
22		B1129051000	FRAME THREAD GUIDE UPPER	1
23		SS2090710TP	SCREW 9/64-40 L=7.2	2
24		21408554	THREAD GUIDE ASM.	1
25		21408505	THREAD GUIDE PLATE	(1)
26		17912106	NEEDLE THREAD PRESSER PLATE	(1)
27		B1132521000	THREAD PRESSER PLATE SPRING	(1)
28		SD0380551SL	HINGE SCREW D= 3.80 H= 5.5	(1)
29		SS2090710TP	SCREW 9/64-40 L=7.2	1
30		22651202	AUXILIARY COVER	1
31		SS2090710TP	SCREW 9/64-40 L=7.2	2
32		B3138512000	TAKE-UP SPRING ADJUSTING PLATE	1
33		SS7090520TP	SCREW 9/64-40 L= 4.5	1
34		B1111563000	BED SLIDE SPRING	1
35		SS4110515SP	SCREW 11/64-40 L=5	2
36		TA1050504RO	RUBBER PLUG	1
37		SS2110920TP	SCREW 11/64-40 L=8.5	1
38		10201200	RUBBER PLUG	1
39		TA1050504RO	RUBBER PLUG	1
40		22619100	CAP	1
41	#03	21348909	WINDOW PLATE D	1
42		TA1050504RO	RUBBER PLUG	2
43		VF81	BED SLIDE(LEFT) A	1
44		VF68	BED SLIDE(RIGHT) A	1
45		TA1050504RO	RUBBER PLUG	1
46		TA1050504RO	RUBBER PLUG	2
47		SS4111215SP	SCREW 11/64-40 L=12	1

#01 1510VF #03 1510VF-7

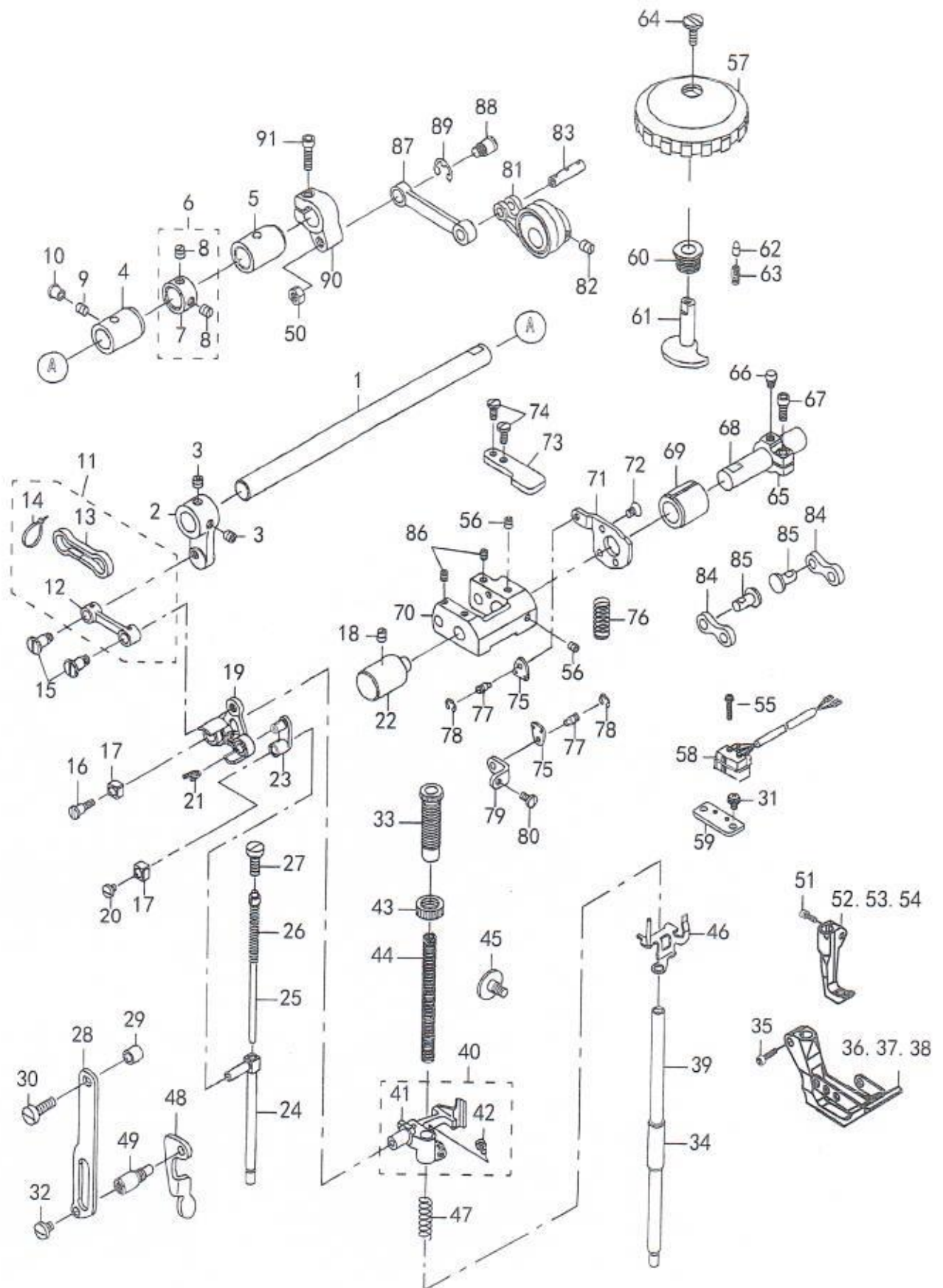
2. Upper shaft, lower shaft driving & balance components



1	21332705	UPPER SHAFT	1
2	21333000	UPPER SHAFT FRONT METAL	1
3	B1905520000G	THREAD TAKE-UP LEVER	1
4	B1906051000	TAKE-UP LEVER PIN	1
5	B1907057000	THRUST PIN	1
6	SS8150822TP	SCREW 15/64-28 L=8	1
7	21339106	NEEDLE BAR CRANK ROD	1
8	CQ202000000	OIL WICK	0.45
9	CQ202000000	OIL WICK	0.03
10	B1210051000G	NEEDLE BAR CRANK PIN	1
11	CQ202000000	OIL WICK	1
12	21332507	COUNTER WEIGHT (A) (36MM)	1
13	SS8150822TP	SCREW 15/64-28 L=8	2
14	SM8080812TP	SCREW M8X8	2
15	21339502	UPPER FEED CAM (3.5)	1
16	SS8660810TP	SCREW 1/4-40 L=8	2
17	21333109	UPPER SHAFT INNER METAL	1
18	CQ202000000	OIL WICK	0.15
19	21336557	ECCENTRIC CAM A ASM.	1
20	21336508G	ECCENTRIC CAM A	1
21	SS8660810TP	SCREW 1/4-40 L=8	2
22	21333703	SAFETY CLUTCH DISC	1
23	22604904	UPPER SPROCKET	1
24	SS6661110SP	SCREW 1/4-40 L=11	2
25	22604300	TIMING BELT	1
26	B1203512000	BUSHING REAR	1
27	21402300	UPPER SHAFT BEARING HOOK	1
28	SM8060602TP	SCREW M6X6	2
29	SS8150710TP	SCREW 15/64-28 L=7	3
30	SS8150822TP	SCREW 15/64-28 L=8	2
31	21387501	LOWER SPROCKET ASM.	1
32	B1214019000	SPROCKET RING	1
33	40038700	THRUST COLLAR ASM.	1
34	40038702	THRUST COLLAR	(1)
35	SS8661030SP	SCREW 1/4-40 L=10	(2)
36	SB120000200	BEARING 20X42	1
37	SS7120760SP	SCREW 3/16-28 L= 7.0	2
38	21353008	HORIZONTAL FEED CAM COVER	1
39	SS7110710SP	SCREW 11/64-40 L=7	2
40	21427000	FLYWHEEL	1
41	RE0500000K0	E-RING	1
42	B1639051000	SPRING	1
43	B1313055000	SAFETY CLUTCH KNOB SLEEVE	1
44	B1312563000A	SAFETY CLUTCH PUSH BUTTON	1

1	21362504	NEEDLE BAR FRAME	1
2	21405204	HINGE STUD	1
3	22814909	FELT	1
4	B1437051000	OIL WICK RETAINER	1
5	SS8151150TP	SCREW 15/64-28 L=10.5	1
6	22814909	FELT	1
7	VFC2	NEEDLE BAR	1
8	B1411521000	NEEDLE ROD HOLDER	1
9	SS7090910SP	SCREW 9/64-40 L= 8.5	1
10	B1412051000	FELT	1
11	CQ202000000	OIL WICK	0.05
12	SS7080510TP	SCREW 1/8-44 L=4.5	1
13	MC372001600	NEEDLE SY3355 160	2
14	B1467563000	UPPER FEED BAR GUIDE	1
15	SS7110910TP	SCREW 11/64-40 L= 8.5	2
16	21388400	ROCKING BASE GUIDE	1
17	SS7110830SP	SCREW 11/64-40 L= 7.5	2
18	21338603	ROCKING BASE GUIDE (B)	1
19	SS6091022TP	SCREW	2
20	21338801	ROCKING FRONT ARM	1
21	SM8080812TP	SCREW	2
22	21338900	ROCKING SHAFT	1
23	B1414232000	SQUARE BLOCK	1
24	B1410771000	STUD	1
25	21339304	ROCKING SHAFT FRONT METAL	1
26	40027746	BUSHING REAR	1
27	21339056	ROCKING REAR ARM ASM.	1
28	21339007	ROCKING REAR ARM	1
29	SS6152440SP	SCREW 15/64-28 L=23.5	-1
30	21347406	ROCKING REAR ARM FELT	1
31	EA9500B0100	CABLE BAND	2

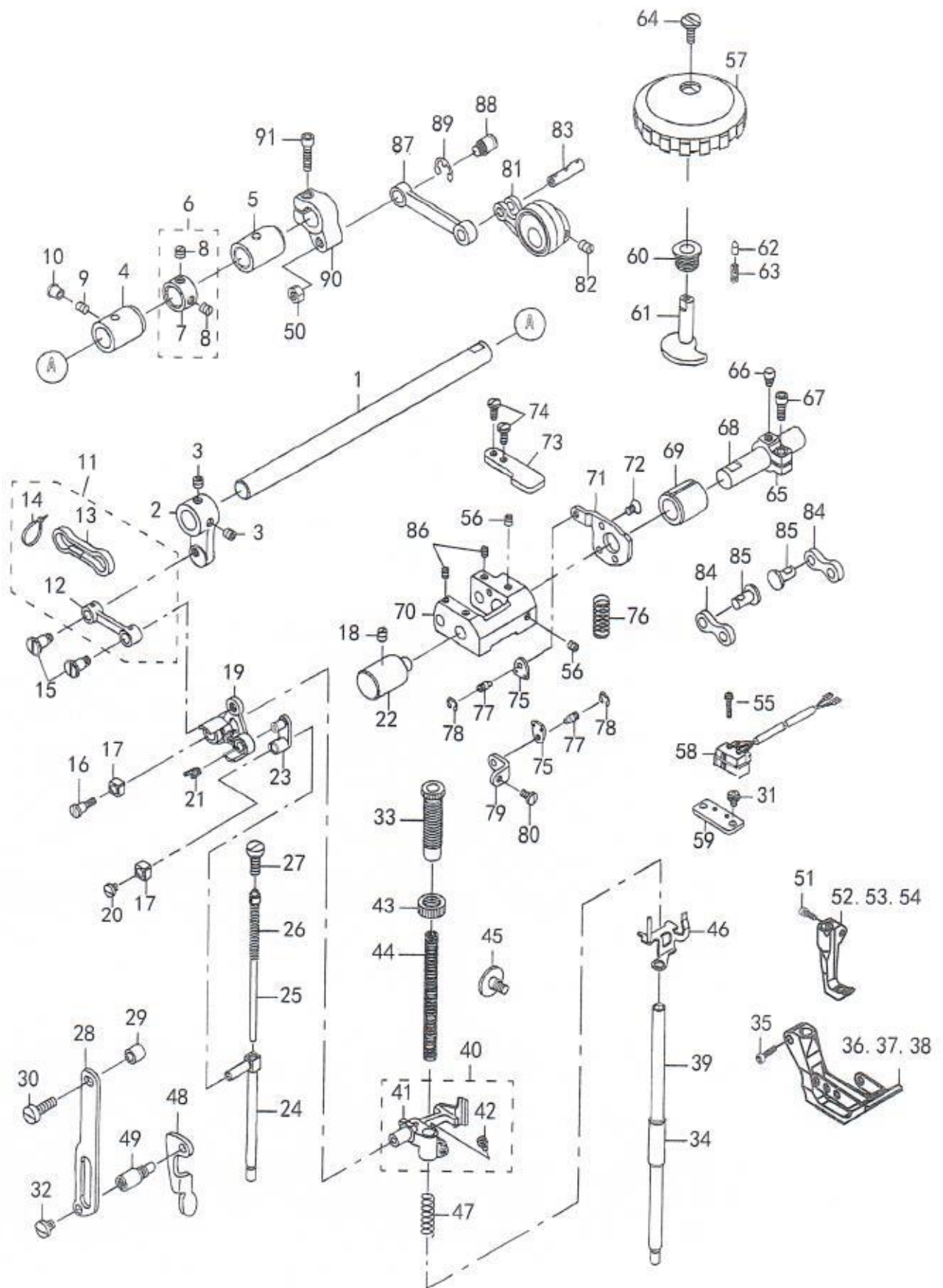
4. Pressure adjusting & upper feed mechanism



序号	说明	编码及型号	英文名称	数量
1		21340401	UPPER FEED SHAFT	1
2		21340500	UPPER FEED FRONT ARM	1
3		SS8660612TP	SCREW 1/4-40 L=6	2
4		21341904	FRONT METAL	1
5		21378302	FEED SHAFT METAL	1
6		22904155	MAIN SHAFT THRUST COLLAR ASM.	1
7		22904106	MAIN SHAFT THRUST COLLAR	-1
8		SS8660610TP	SCREW 1/4-40 L=6	2
9		SS8150822TP	SCREW 15/64-28 L=7	1
10		TA0750704RO	RUBBER PLUG	1
11		40033027	UPPER FEED LINK ASM.	1
12		40033026	UPPER FEED LINK	-1
13		21347109	FELT	-1
14		EA9500B0000	CLIP CV-70S	-2
15		40018340	SCREW	2
16		SD0640701SP	SCREW	1
17		B1414555000	SLIDE BLOCK	2
18		SS8150710SP	SCREW 15/64-28 L=7	1
19		40033029	TRIANGULAR LEVER ASM.	1
20		SS7110510SP	SCREW 11/64-40 L=5	1
21		CQ252000000	OIL WICK	0.02
22		21337803	FEED ADJUSTING BASE SUPPORT	1
23		40018341	WALKING BAR DRIVING LINK	1
24		40033030	WALKING BAR A	1
25		B14670530A0	WALKING BAR ASM.	1
26		B1468053000	WALKING BAR SPRING	1
27		SS6151780SP	SCREW 15/64-28 L=17.0	1
28		21406509	UPPER FEED GUIDE PLATE	1
29		26225201	ROLLER	1
30		SS6151920SP	SCREW 15/64-28 L=19.0	1
31	#03	SM6040800SP	SCREW M4 L=8	2
32		SS7150740SP	SCREW 15/64-28 L=7	1
33		21340906	PRESSER ADJUSTING SCREW	1
34		B1510155000	PRESSER BAR LOWER BUSHING	1
35		LS4A10	SCREW M4 L=8	1
36	Matching	VFE015A	PRESSER FOOT ASM. 1.5	1
37	Matching	VFE025A	PRESSER FOOT ASM. 2.5	1
38		VFE050A	PRESSER FOOT ASM. 5.0	1
39		21451505	PRESSER BAR	1
40		40033032	PRESSER BAR HOLDER A ASM.	1
41		40033031	PRESSER BAR HOLDER A	1
42		SS7110910TP	SCREW 11/64-40 L= 8.5	1
43		22907604	PRESSER SPRING REGULATOR NUT	1
44		B1502246000	PRESSER SPRING	1
45		SD0800481SP	HINGE SCREW D= 8 H= 4.9	1
46		21341151	HOLDING PLATE COMPL.	1
47		B1462053000	THREAD RELEASE SPRING	1
48		21406103	PRESSER LIFTER LEVER	1
49		21406608	GUIDE PLATE SPACER	1
50		NS6680320SP	NUT 9/32-28	1

#01 1510VF #03 1510VF-7

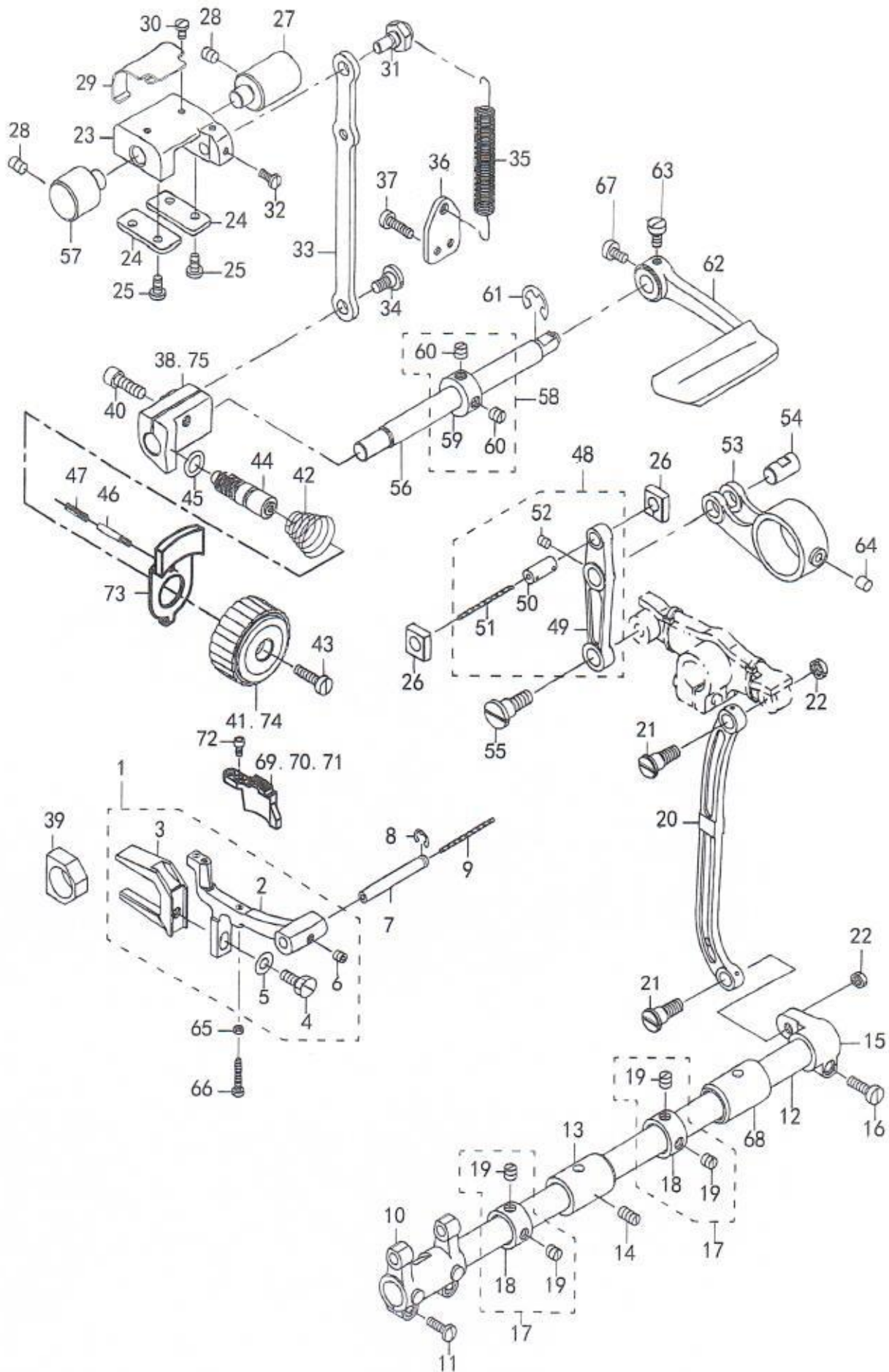
4. Pressure adjusting & upper feed mechanism



序号	说明	零件号	英文名称	数量
51		LS4A8	SCREW M4 L=8	1
52	Matching	VFE015B	WALKING FOOT ASM.	1
53	Matching	VFE025B	WALKING FOOT ASM.	1
54		VFE050B	WALKING FOOT ASM.	1
55	#03	020497	SCREW M2.5*16	2
56		SM8050602TP	SCREW M5 L=6	2
57		10774354	UPPER AND LOWER DIAL ASM.	(1)
58	#03	40024852	VERTICAL DETECTOR SWITCH ASM.	1
59	#03	40024852	Switch seat	1
60		10715100	VERTICAL DIAL SHAFT BUSHING	1
61		10715001	VERTICAL ADJUSTING CAM	1
62		10715704	VERTICAL DIAL PIN	1
63		B152652700G	SPRING	1
64		SS6110630TP	SCREW 11/64-40 L=6	1
65		21341607	VERTICAL ADJUSTING ARM	1
66		10715308	PIN	1
67		SM6051402TP	SCREW M5X0.8 L=14	1
68		21341508	VERTICAL CHANGE BASE SHAFT	1
69		10718203	FEED SHAFT FRONT METAL	1
70		10714202	VERTICAL CHANGE BELT	1
71		21438106	STOPPER PLATE B	1
72		SM1050801SR	SCREW M5 L=8	1
73		21339700	UPPER FEED STOPPER PLATE	1
74		SS4110815SP	SCREW	2
75		10713501	SPRING HOOK	2
76		10716504	VERTICAL SHAFT SPRING	1
77		B3416552000	CONNECTING ROD HINGE SCREW	2
78		RE0500000KO	E-RING	2
79		21339809	UPPER FEED DOG SPRING HOOK	1
80		SS7110830SP	SCREW 11/64-40 L= 7.5	1
81		10713766	ECCENTRIC ROD (SET)	1
82		SS8660810TP	SCREW 1/4-40 L=8	2
83		10713808	CONNECTION LINK PIN B	1
84		10714509	CONNECTION LINK B	2
85		10714608	CONNECTION LINK B SUPPORT PIN	2
86		SM8050602TP	SCREW M5 L=6	2
87		21340005	UPPER FEED LINK (B)	1
88		21048707	HINGE SCREW	1
89		RE0800000KO	E-SHAPED SNAP RING (8MM)	1
90		21340302	UPPER FEED REAR ARM (B)	1
91		SM6052002TP	SCREW M5 L=20	1

#01 1510VF #03 1510VF-7

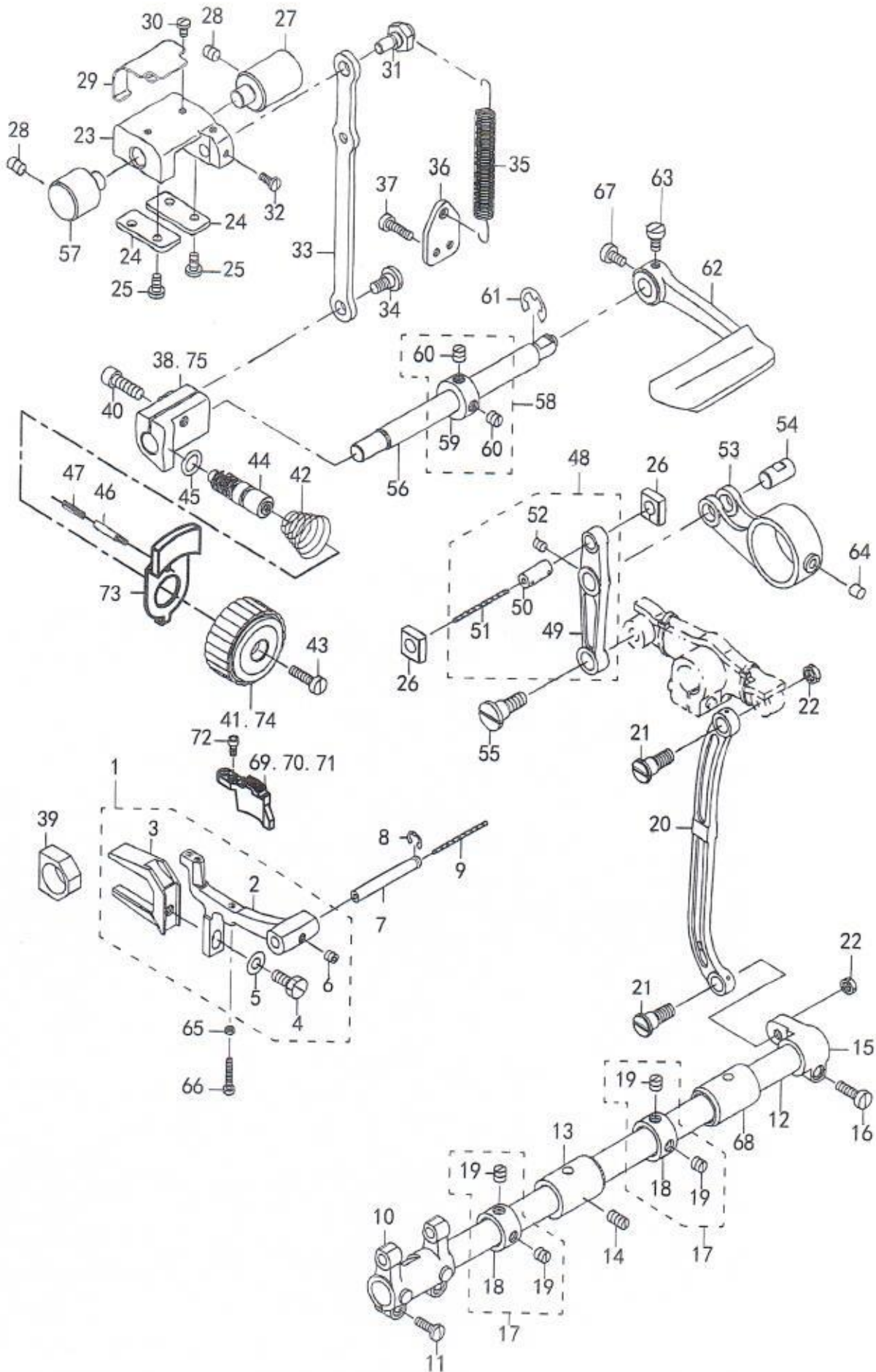
5. Feed mechanism



1	21364252	FEED BASE ASM.	1
2	21364203	FEED BASE	1
3	10107902	FEED BAR FORK	1
4	SS9151440CP	SCREW 15/64-28 L=14	(1)
5	WP0621016SD	WASHER 6. 2X13X1	(1)
6	SM8050502TP	SCREW M5 L=5	(1)
7	B1604012000A	SHAFT	1
8	RE0500711KP	SNAP RING 5	1
9	CQ202000000	OIL WICK	0.14
10	21364104	FEED ROCKER	1
11	SS7111410SP	SCREW 11/64-40 L=14	2
12	22609408	FEED ROCK SHAFT	1
13	21378302	FEED SHAFT METAL	2
14	020514	SCREW 11/64-40 L=8.5	2
15	22609309	FEED ROCKER SHAFT CRANK	1
16	SS6121610TP	SCREW 3/16-28 L=15.5	1
17	22904155	MAIN SHAFT THRUST COLLAR ASM.	2
18	22904106	MAIN SHAFT THRUST COLLAR	(1)
19	SS8660610TP	SCREW 1/4-40 L=6	(2)
20	10205201	NEEDLE BAR FRAME ROD	1
21	SD0900701TP	HINGE SCREW D= 9 H= 7	1
22	NS6680320SP	NUT 9/32-28	1
23	21337506	FEED ADJUSTING BASE	1
24	21337704	FEED ADJUSTING BASE COVER	2
25	SS7110910TP	SCREW 11/64-40 L= 8.5	4
26	21337407	SQUARE BLOCK	2
27	21337803	FEED ADJUSTING BASE SUPPORT	2
28	SS8150822TP	SCREW 15/64-28 L=8	2
29	21338306	FELT SUPPORT	1
30	SS5090610SP	SCREW 9/64-40 L=6	2
31	21337902	ECCENTRIC PIN	1
32	SS709010TP	SCREW 9/64-40 L= 8.5	2
33	21337308	FEED ADJUSTING ROD	1
34	SD0800402TP	HINGE SCREW D= 8 H= 4	1
35	21337605	SPRING	1
36	21338009	SPRING HOOK	1
37	SS7111410TP	SCREW 11/64-40 L=16	2
38	#02 21337209	FEED ADJUSTING A	1
39	B1610512000	FEED DRIVING SLIDE BLOCK	1
40	SM6061802TP	SCREW M6 L=18	1
41	#02 010536A	FEED DIAL A	1
42	010562	SPRING	1
43	SS6121860SP	SCREW 3/16-28 L=18	1
44	11009909	FEED REGULATOR SCREW	1
45	R0092270200	RUBBER RING	1
46	010563	FEED REGULATOR PIN	1
47	22912109	FEED REGULATOR PIN SPRING	1
48	21336656	FEED LINK ASM.	1
49	21336607	FEED LINK	(1)
50	B1418761000	CONNECTING FORKED LINK PIN	1

#02: edge distance=5mm #04: edge distance<2.5mm

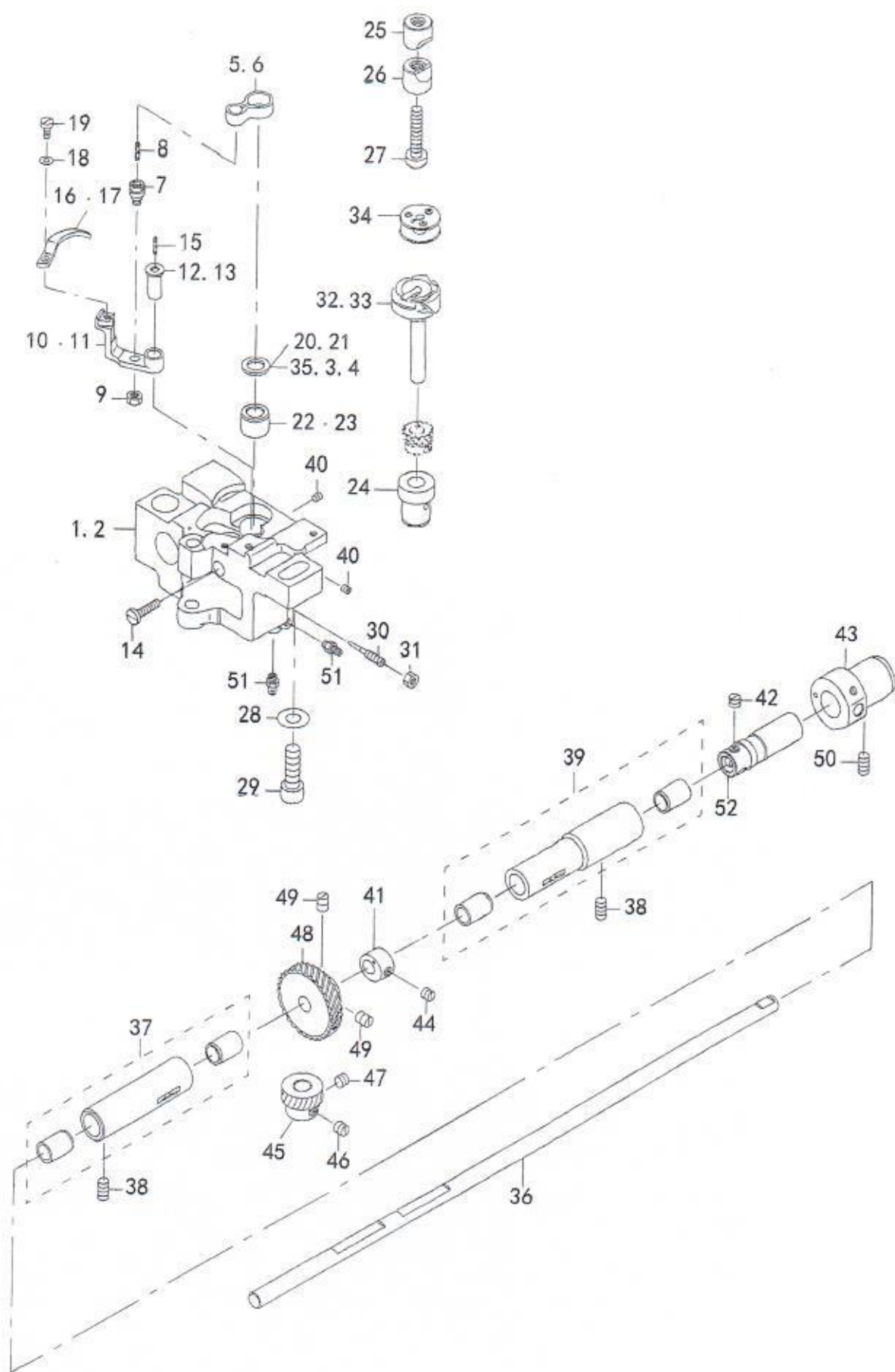
5. Feed mechanism



51		CQ202000000	OIL WICK	0.04
52		SM8050502TP	SCREW M5X6	1
53		21336706	FEED ROD A	1
54		21338207	FEED LINK PIN	1
55		SD1000801SH	HINGE SCREW D=10 H=8	1
56		21336300	BACKWARD FEED LEVER SHAFT	1
57		010523A	FEED ADJUSTING BASE SUPPORT	1
58		CS1201010SH	THRUST COLLAR ASM. D=12 W=10	1
59		CS1201011SH	THRUST COLLAR D=12 W=10	(1)
60		SS8660610TP	SCREW 1/4-40 L=6	(2)
61		RE0900000K0	E-RING 9	1
62		21388004	REVERSE FEED CONTROL LEVER	1
63		SS6120930TP	SCREW 3/16-28 L=9	2
64		22814909	FELT	1
65		NS6080210SP	NUT 1/8-44	1
66		SS6081810SP	SCREW 1/8-44 L=18.0	1
67		SS7150910TP	SCREW 15/64-28 L=9	1
68		020568	FEED SHAFT METAL	1
69	Matching	VFE015E	FEED DOG	1
70	Matching	VFE025E	FEED DOG	1
71		VFE050E	FEED DOG	1
72		SS6580752TP	SCREW 1/8-40 L=7	2
73		10561	BOTTON	1
74	#04	040561A	FEED DIAL A	1
75	#04	040559	FEED ADJUSTING A	1

#02: edge distance=5mm #04: edge distance<2.5mm

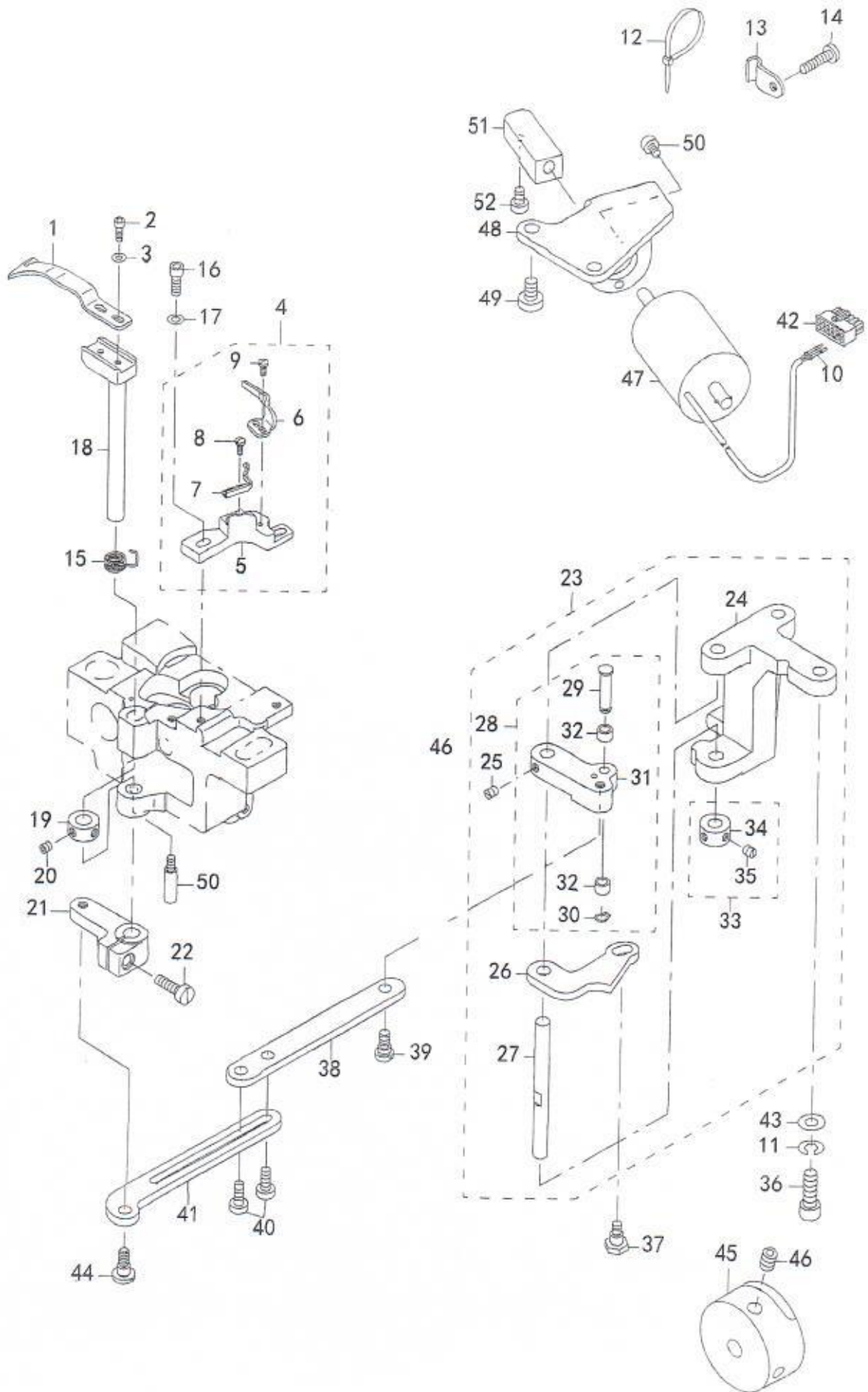
六(A)、旋梭、下轴机构 (HY-1560N、HY-1560N-7用)



1	#03	21390109	HOOK SHAFT BASE	1
2	#01	21362108	HOOK SHAFT BASE	1
3		10110906	BUSHING THRUST 1.1	1
4		10111003	THRUST WASHER 0.6	1
5	#03	21334909	INNER HOOK GUIDE LINK	1
6	#01	21334909	BOBBIN CASE OPENING LEVER LINK	1
7		B1821051000	CRANK SCREW STUD	1
8		CQ202000000	OIL WICK	0.02
9		NS6110420SP	NUT 11/64-40	1
10	#03	21335500	GUIDE ARM (FOR THREAD CUTTING)	1
11	#01	B1822563000	BOBBIN CASE OPENING LEVER CRAN	1
12	#03	21335708	INNER HOOK GUIDE ARM SHAFT	1
13	#01	B1823051000	OPENING LEVER CRANK PIN	1
14		SS7111810TP	SCREW 11/64-40 L=18	1
15		CQ202000000	OIL WICK	0.02
16	#03	21335807	INNER HOOK GUIDE	1
17	#01	B1824563000	BOBBIN CASE OPENING LEVER	1
18		WP0371016SD	WASHER 3.7X8X1	1
19		SS6090810SP	SCREW 9/64-40 L= 7.5	1
20		10111102	THRUST WASHER 0.9	1
21		10112704	THRUST WASHER 1.2	(1)
22	#03	21378401	HOOK SHAFT UPPER METAL	1
23	#01	21378500	HOOK SHAFT UPPER METAL	1
24		21334701	HOOK SHAFT LOWER METAL	1
25		10109908	SADDLE INSTALLING BLOCK UPPER	1
26		10112407	SADDLE INSTALLING BLOCK LOWER	1
27		SS6153040SP	SCREW 15/64-28 L=30	1
28		WP0850002SP	WASHER 8.5X18X1.6	1
29		SM6082502TP	SCREW M8 L=25	1
30		B1834512000A	OIL ADJUSTING SCREW	1
31		NS6110420SP	NUT 11/64-40	2
32	#03	21387055	THREAD TRIMMER HOOK ASM.	1
33	#01	B18305630A0	VERTICAL-AXIS SEWING HOOK ASM.	1
34		21334800	ALUMINUM BOBBIN WITH KNURL	1
35		10109700	THRUST WASHER 1.5	1
36		21361704	LOWER SHAFT	1
37		B18025120AOA	BUSHING ASM. INTERMEDIATE	1
38		SS8151150TP	SCREW 15/64-28 L=10.5	2
39		B18035150A0	BUSHING ASM. INTERMEDIATE	1
40		SS8110422TP	SCREW 11/64-40 L=4	1
41		21378104	FEED DRIVING ECCENTRIC	1
42		SS8660530TP	SCREW 1/4-40 L= 4.5	1
43		22611701	PLUNGER BUSHING B	1
44		SS8660530TP	SCREW 1/4-40 L= 4.5	1
45		B1817051000	HOOK DRIVING SHAFT GEAR SMALL	1
46		SS8660670SP	SCREW 1/4-40 L= 6.1	1
47		SS8660530TP	SCREW 1/4-40 L= 4.5	1
48		B1816051000	HOOK DRIVING SHAFT GEAR LARGE	1
49		SS8660810TP	SCREW 1/4-40 L=8	2
50		SS8151150SP	SCREW 15/64-28 L=10.5	1
51		SQ1110401MZ	CONNECTING SCREW	2
52		22611909	OIL PUMP SHAFT	1

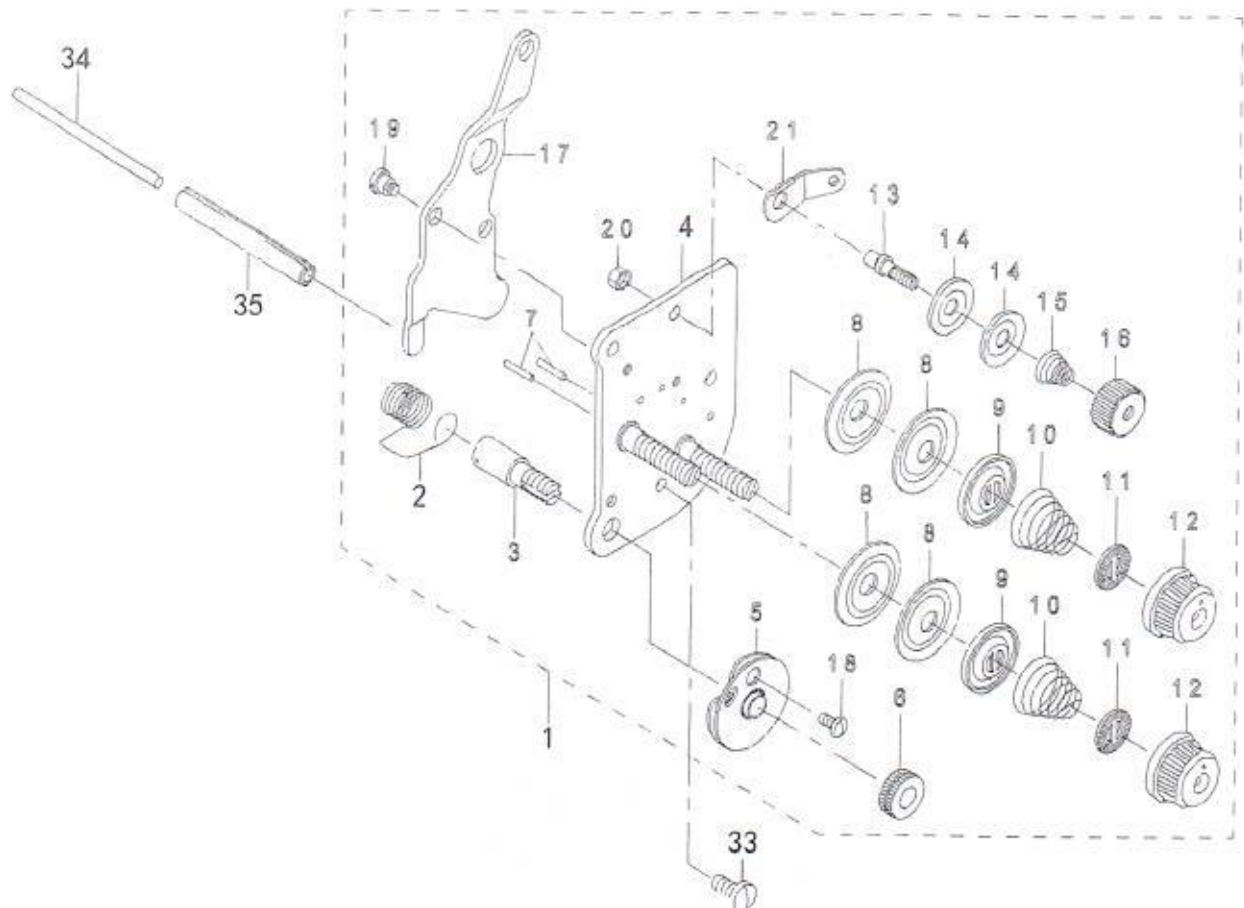
#01 1510VF用 #03 1510VF-7用

七(A)、Thread cutting components



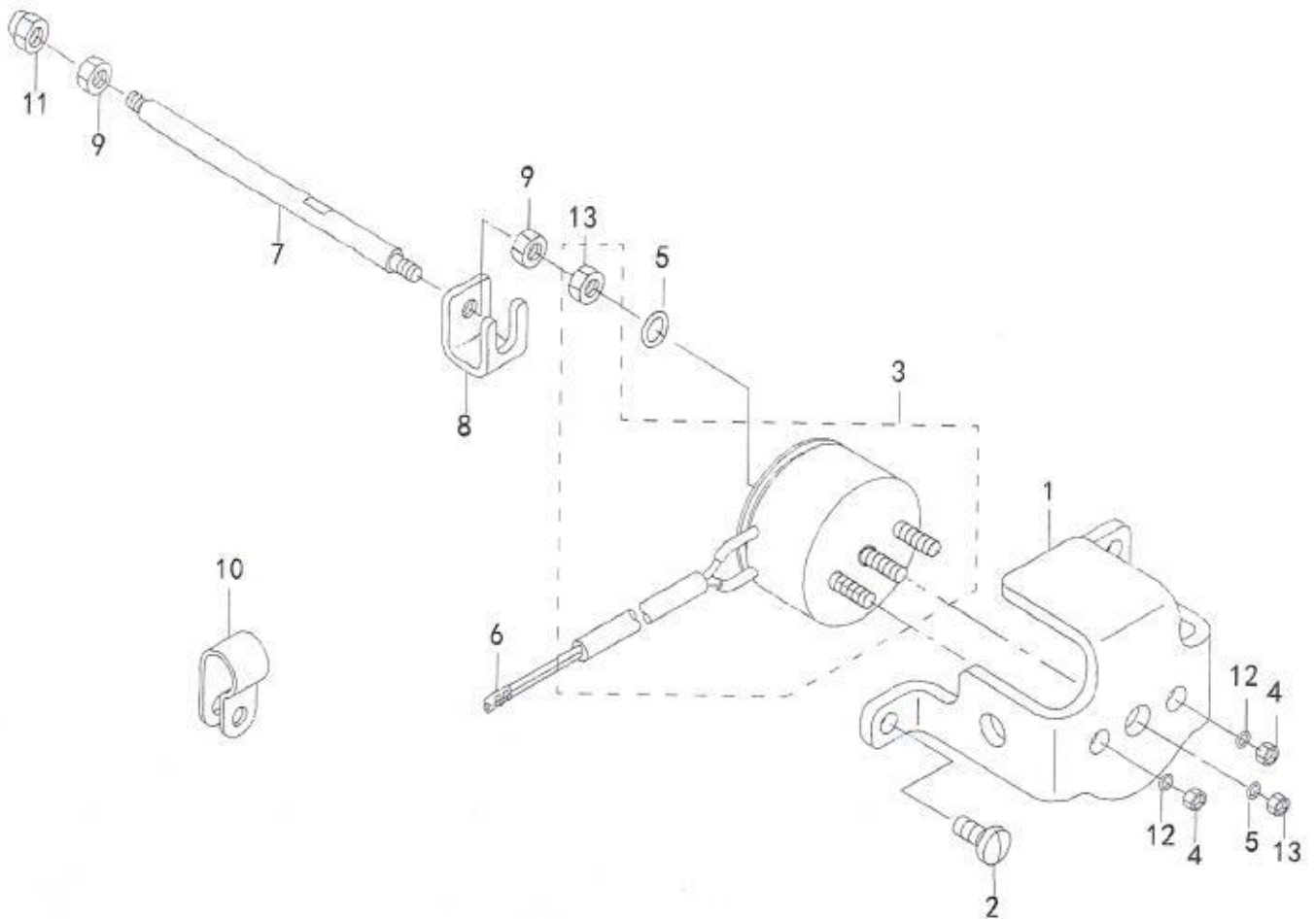
1	21389200	MOVING KNIFE	1
2	SM6030802TP	SCREW M3X0.5 L=8	2
3	WP0320501SC	WASHER M3	2
4	21389556	FIXED KNIFE BASE ASM.	1
5	21389606	FIXED KNIFE BASE	1
6	21389309	FIXED KNIFE	1
7	21389408	CLAMP SPRING	1
8	SS7060610SP	SCREW 3/32-56 L= 5.5	2
9	SS7060610SP	SCREW 3/32-56 L= 5.5	2
10	HK03464000A	TERMINAL FEMALE	2
11	WS0610002KP	SPRING WASHER	2
12	EA9500B0100	CABLE BAND	1
13	22620801	PIPE HOLDER	1
14	SS7111810TP	SCREW 11/64-40 L=18	1
15	21390208	MAINTENANCE SPRING	2
16	SM6041202TP	SCREW M4X0.7 L=12	2
17	WP0430800SC	WASHER M4	2
18	21354907	MOVING KNIFE SHAFT	1
19	CS0790731SH	THRUST COLLAR	1
20	SS8110422TP	SCREW 11/64-40 L=4	2
21	21389804	ROCKING ARM	1
22	SS6121610TP	SCREW 3/16-28 L=15.5	1
23	21353750	VERTICAL FITTING BASIS ASM.	1
24	21353701	VERTICAL FITTING BASIS	(1)
25	SS8110510SP	SCREW 11/64-40 L=5	(2)
26	21354006	THREAD CUTTING DRIVING PLATE	(1)
27	10116804	SHAFT	(1)
28	21353859	THREAD CUTTING ROLLER ARM	(1)
29	21353909	CAM ROLLER SHAFT	(1)
30	D2430555B00	SNAP RING	(1)
31	21353800	THREAD CUTTING ROLLER ARM	(1)
32	D2427555B00B	CAM ROLLER	(2)
33	CS070081BSH	THRUST COLLAR ASM. D=7 W=8	(1)
34	CS0700811SH	THRUST COLLAR D=7 W=8	(1)
35	SS8110510SP	SCREW 11/64-40 L=5	(2)
36	SS6151812TP	SCREW 15/64-28 L=18	2
37	SD0640482SP	HINGE SCREW D= 6.35 H= 4.8	1
38	VF91	CONNECTING PLATE	1
39	SD0640325SP	HINGE SCREW	1
40	SS6111140SP	SCREW 11/64-40 L=11	2
41	2136601	CONNECTING PLATE	1
42	HK034610120	HOUSING 12P	1
43	WP0621016SD	WASHER 6.2X13X1	2
44	SD0640451TP	HINGE SCREW D=6.35 H=4.5	1
45	21389911	THREAD TRIMMER CAM	1
46	SS8660612TP	SCREW 1/4-40 L=6	2
47	21355102	THREAD CUTTING SOLENOID	1
48	21354600	SOLENOID FITTING PLATE	1
49	SS6151040SP	SCREW 15/64-28 L=10	2
50	SM6040802TP	SCREW M4X0.7 L=8	2
51	21354709	SOLENOID CONNECTING PLATE	1
52	SS6110710TP	SCREW 11/64-40 L= 6.5	2

8. Thread tension components



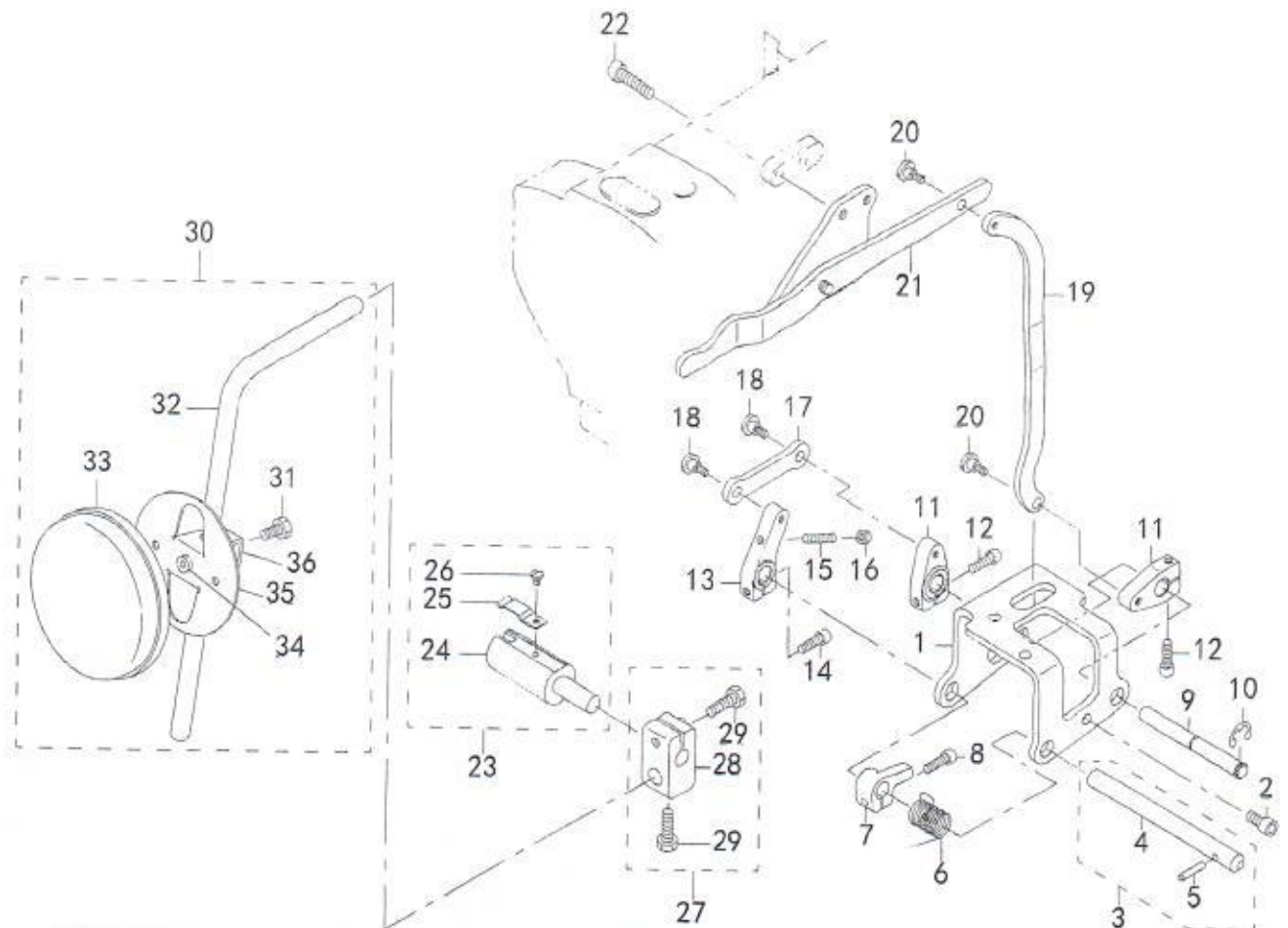
DESCRIPTION			
1	21409065	THREAD TENSION ASM.	1
2	3128520000	THREAD TAKE-UP SPRING A	<1>
3	10320109	SCREW STUD	<1>
4	21409057	THREAD POST BASE COMPL.	<1>
5	B13130510A0	TAKE-UP SPRING GUIDE DISC ASM.	<1>
6	10320208	THRED TENSION STUD NUT	<1>
7	B3127051000	TENSION RELEASE PIN SHORT	<2>
8	B3126012000	THREAD TENSION DISK	<4>
9	22617906	THREAD TENSION DISK PRESSER	<2>
10	B3129053000	TENSION SPRING	<1>
11	B3120125000	ROTATING STOPPER	<2>
12	B3125012000	THREAD TENSION NUT	<2>
13	10124204	THREAD TENSION POST A	<1>
14	B3214047000	BOBBIN WINDER TENSION DISC	<2>
15	D3168555H0B	TENSION SPRING NO. 1	<1>
16	11072402	THREAD TENSION NUT	<1>
17	21441100	THREAD RELEASE PLATE	<1>
18	SS4080620TP	SCREW STUD	<1>
19	SD0470281SP	HINGE SCREW D=4.7 H=2.8	<1>
20	NS6110310SP	NUT 11/64-40	<1>
21	D3162555B00	THREAD GUIDE	<1>
33	SS7110910TP	SCREW 11/64-40 L= 8.5	<1>
34	21348206	TENSION RELEASE BAR	<1>
35	PS0600502KP	SPRING PIN	<1>

9. Threaf release components



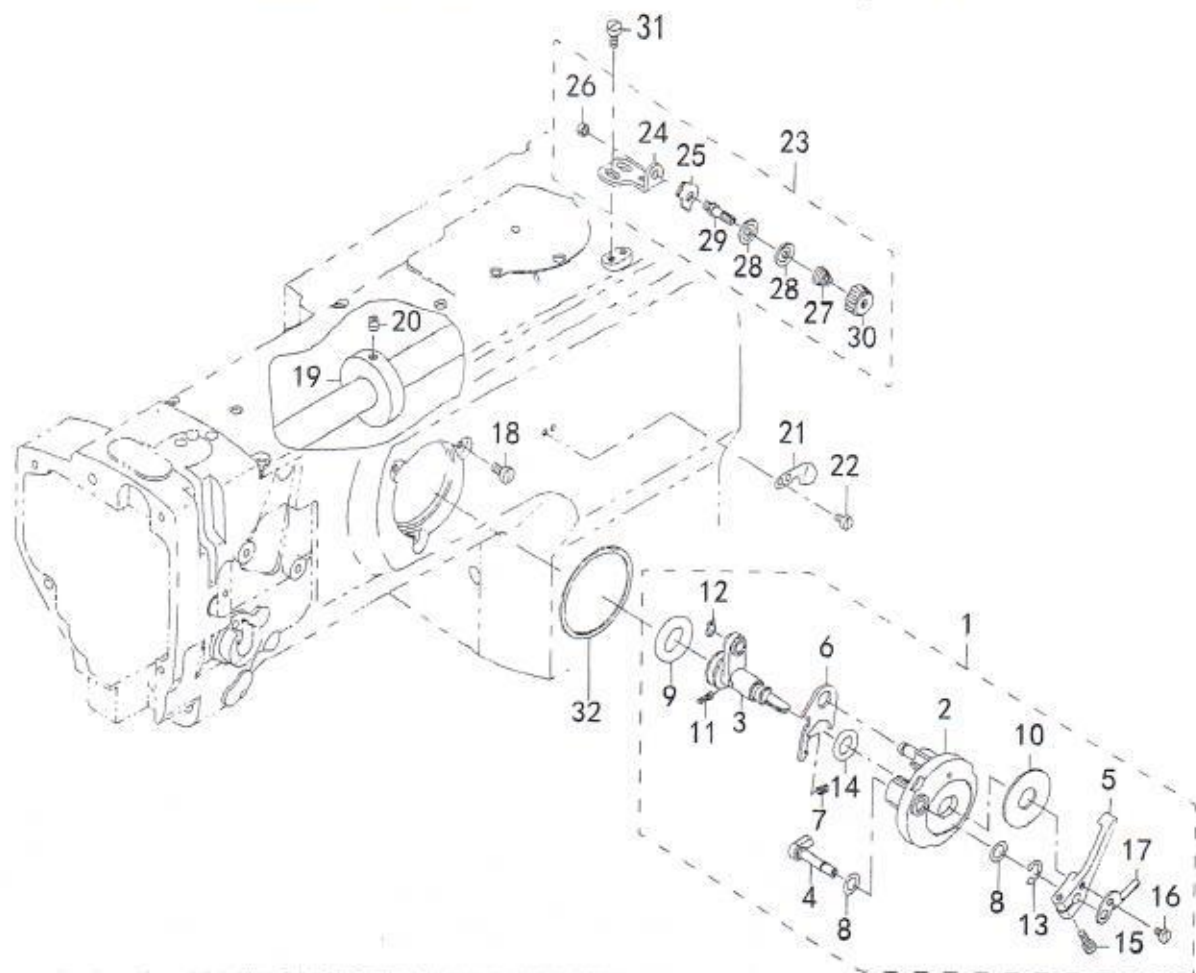
1	VF74	SOLENOID INSTALLING PLATE	1
2	SS7110910T	SCREW 11/64-40 L= 8.5	2
3	P1363106	TENSION RELEASE SOLENOID	1
4	LM3	NUT M43	2
5	PD5	WASHER	1
6	HK03464000B	PIN CONTACT	2
7	21441209	TENSION RELEASE BAR	1
8	21441308	COUPLING	1
9	LM4	NUT M4X0.7	2
10	HX00123000A	CABLE CLIP	1
11	NM7040062SB	NUT M4	1
12	THD3	WASHER 3	1
13	LM4A	NUT M4X0.7	2

10. Knee lifting components



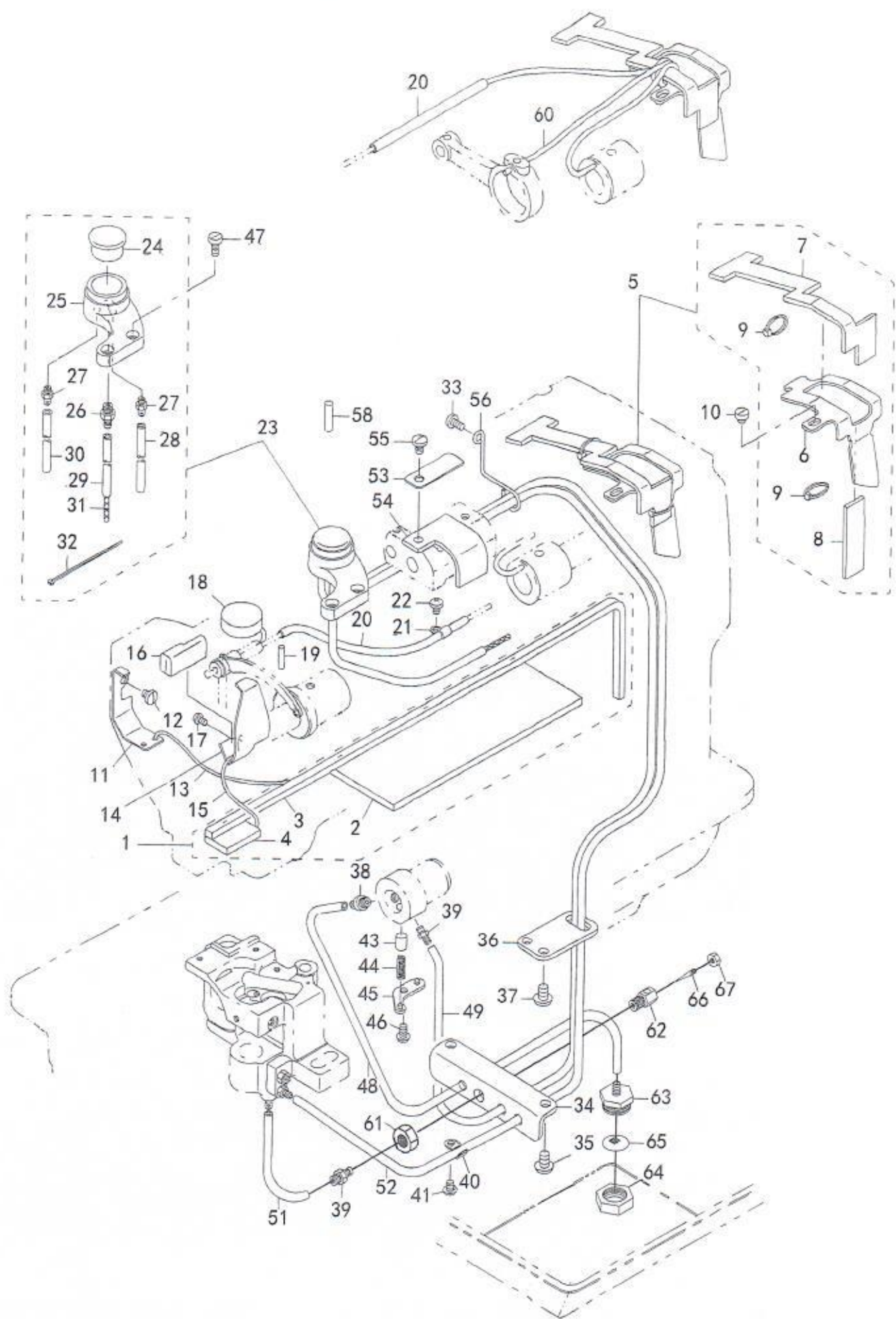
DESCRIPTION			
1	21343207	KNEE LIFTER SHAFT BASIS	1
2	SM6061202TP	SCREW M6 L=12	3
3	21342555	KNEE LIFTER SHAFT A ASM.	1
4	21342506	KNEE LIFTER SHAFT A	1
5	21342605	KNEE LIFTER SHAFT PIN	1
6	21343702	KNEE LIFTER SHAFT A SPRING	1
7	21343801	KNEE LIFTER SPRING RACK	1
8	SM6051602TP	SCREW M5X0.8 L=16	1
9	21342704	KNEE LIFTER SHAFT B	1
10	KHZ8	E-SHAPED SNAP RING (8MM)	1
11	21343009	KNEE LIFTER LEVER B	2
12	SM6052002TP	SCREW M5 L=20	2
13	21342803	KNEE LIFTER LEVER A	1
14	SM6052002TP	SCREW M5 L=20	1
15	SM8052502TP	SCREW M5X0.8 L=25	1
16	NM6050001SD	NUT M5X0.8	1
17	21342902	KNEE LIFTER LINK	1
18	SD0700451TP	HINGE SCREW D=7 H=4.5	2
19	21343405	KNEE LIFTER CONNECTING PLATE	1
20	SD0700451TP	HINGE SCREW D=7 H=4.5	2
21	21343355	KNEE LIFTER LEVER	1
22	SM6062502TP	SCREW M6 L=25	2
23	22863252	KNEE LIFTER JOINT ASM.	1
24	22863203	KNEE LIFTER JOINT	1
25	B3428521000	PRESSER SPRING	1
26	SS7090510SP	SCREW 9/64-40 L= 4.6	1
27	22932453	BRACKET ASM.	1
28	22932404	BRACKET	1
29	22934707	SCREW	2
30	21343157	KNEE PRESS PLATE ASM.	1
31	SM9061203SE	SCREW M6 L=12	1
32	21343108	KNEE PRESS LEVER	1
33	22934509	KNEE PAD PLATE COVER	1
34	22934400	KNEE PAD PLATE RUBBER	1
35	22934202	KNEE PAD PLATE	1
36	22934301	KNEE PAD PLATE SUPPORT	1

11. Lower thread winder mechanism component



DESCRIPTION			
1	21357967	BOBBIN DEVICE ASM.	1
2	22537658	BOBBIN FITTING BASIS COMPL.	1
3	21357959	BOBIN SHAFT COMPL.	1
4	22538151	BOBBIN CAM SHAFT COMPL.	1
5	23636202	BOBBIN LEVER	1
6	21356001	ADJUSTING PLATE	1
7	B152989000CA	PRESSUR FOOT SPRING	1
8	10618304	VERTICAL ROLLER WASHER	2
9	21358205	BOBBIN FRICTION GEAR	1
10	B3205210000	CUSHION	1
11	B1148555000	SPRING	1
12	RC0560711KP	RETAINING RING	1
13	RE0500000K0	E-RING	1
14	RO092270200	RUBBER RING	1
15	SS7091410SP	SCREW 9/64-40 L=13.5	1
16	SS6090520SP	SCREW 9/64-40 L= 5.0	1
17	14512503	BOBBIN ADJUSTING PLATE	1
18	SS6110810TP	SCREW 11/64-40 L=8	3
19	10704807	BOBBIN FRICTION WHEEL	1
20	SM8050602TP	SCREW M5 L=6	2
21	10502300	THREAD CUTTER	1
22	SS6090620SP	SCREW 9/64-40 L=6	2
23	21355755	LOWER THREAD GUIDE ASM.	1
24	21355706	FITTING BASE	1
25	D3162555B00	THREAD GUIDE	1
26	NS6110310SP	NUT 11/64-40	1
27	D3168555H0B	TENSION SPRING NO. 1	1
28	B3214047000	BOBBIN WINDER TENSION DISC	2
29	21378708	THREAD TENSION POST	1
30	11072402	THREAD TENSION NUT	1
31	SM6040800SP	SCREW	2
32	22538706	PACKING	1

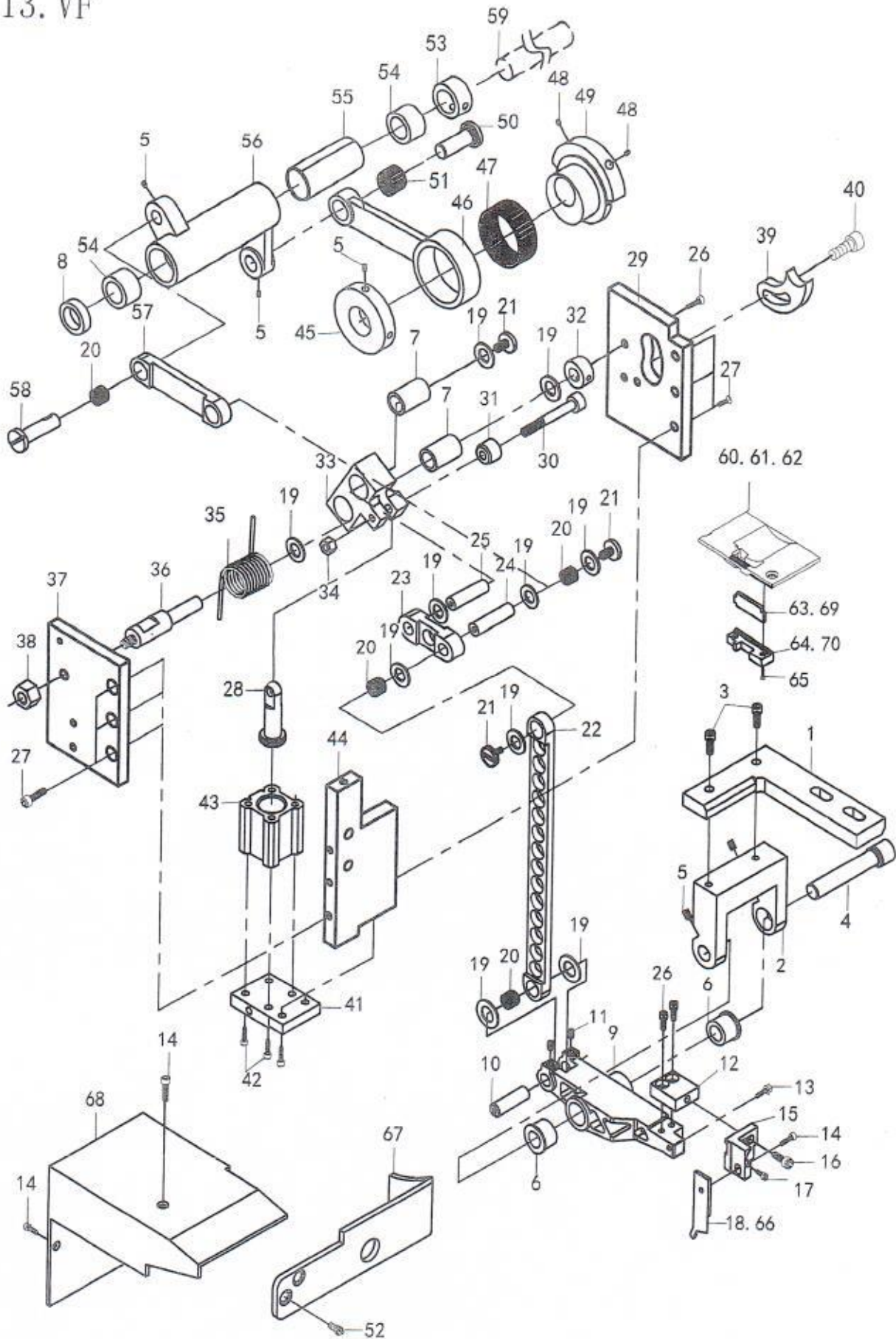
12. Lubrication components



1	21345756	ARM ONCE THROUGH OIL FELT ASM.	1
2	21345707	ARM ONCE THROUGH FELT A	1
3	21345806	FELT B	1
4	21345905	FACE ONCE THROUGH FELT	1
5	21346358	FELT SUPPORT ASM.	1
6	21346309	FELT	1
7	21346507	FEED CHANGE FELT	1
8	21346408	FELT	1
9	EA9500B0000	CLIP CV-70S	2
10	SS7110710SP	SCREW 11/64-40 L=4.3	1
11	21340708	UPPER FEED OIL BAR PLATE	1
12	SS7110710SP	SCREW 11/64-40 L=5	1
13	CQ202000000	OIL WICK	0.2
14	21347000	TAKE-UP OIL PLATE	1
15	CQ202000000	OIL WICK	0.25
16	21347208	TAKE-UP LUBRICATION FELT	1
17	SS3090610SP	SCREW 9/64-40 L=6	1
18	21346002	FELT	1
19	B1412051000	FELT	1
20	BT0600402EA	OIL TUBE	0.12
21	B3538112000	OIL RETURN TUBE HOLDER	1
22	SS4110615SP	SCREW 11/64-40 L=6	1
23	40051503	ARM OIL TANK ASM.	1
24	B3520586000	OIL SIGHT WINDOW	1
25	21345608	ARM OIL TANK	1
26	SQ1110401MZ	CONNECTING SCREW	1
27	SQ1150451MZ	CONNECTING SCREW	2
28	23630007	TUBE	0.5
29	23630007	TUBE	0.2
30	23630007	TUBE	0.6
31	CQ252000000	OIL WICK	0.7
32	EA9500B0100	CABLE BAND	3
33	SS7110830SP	SCREW 11/64-40 L= 7.5	1
34	21345103	LUBRICATION BRACKET	1
35	SS4150915SP	SCREW 15/64-28 L=9	2
36	21345202	OIL PIPE STAY	1
37	SS4150915SP	SCREW 15/64-28 L=9	2
38	40064409	CONNECTION SCREW ASM.	1
39	SQ1110401MZ	CONNECTING SCREW	1
40	B3538112000	OIL RETURN TUBE HOLDER	1
41	SS4110615SP	SCREW 11/64-40 L=6	1
42	13765607	OIL CONNEC. ARM	1
43	B3534155000	PLUNGER	1
44	B1214038000	PLUNGER SPRING	1
45	B3524552000	PLUNGER THRUST PLATE	1
46	SS4110815SP	SCREW 11/64-40 L=8	1
47	SS6111010SP	SCREW 11/64-40 L= 9.5	2
48	23630007	TUBE	0.36
49	23630007	TUBE	0.08
50	23630007	TUBE	0.22
51	23630007	TUBE	0.1
52	23630007	TUBE	0.5
53	21338306	LUBRICATION FELT PRESSER	1
54	SS5090610SP	MUTUAL VERTICAL CHANGE FELT	1
55	SS5090610SP	SCREW 3/16-28 L= 7.0	1
56	21346606	PIPE SUPPORT	1
57	EA9500B0100	CABLE BAND	1
58	PS0500202KP	SPRING PIN 5X20	1
59	10126803	OIL TUBE HOLDER	1
60	CQ202000000	OIL WICK	0.2

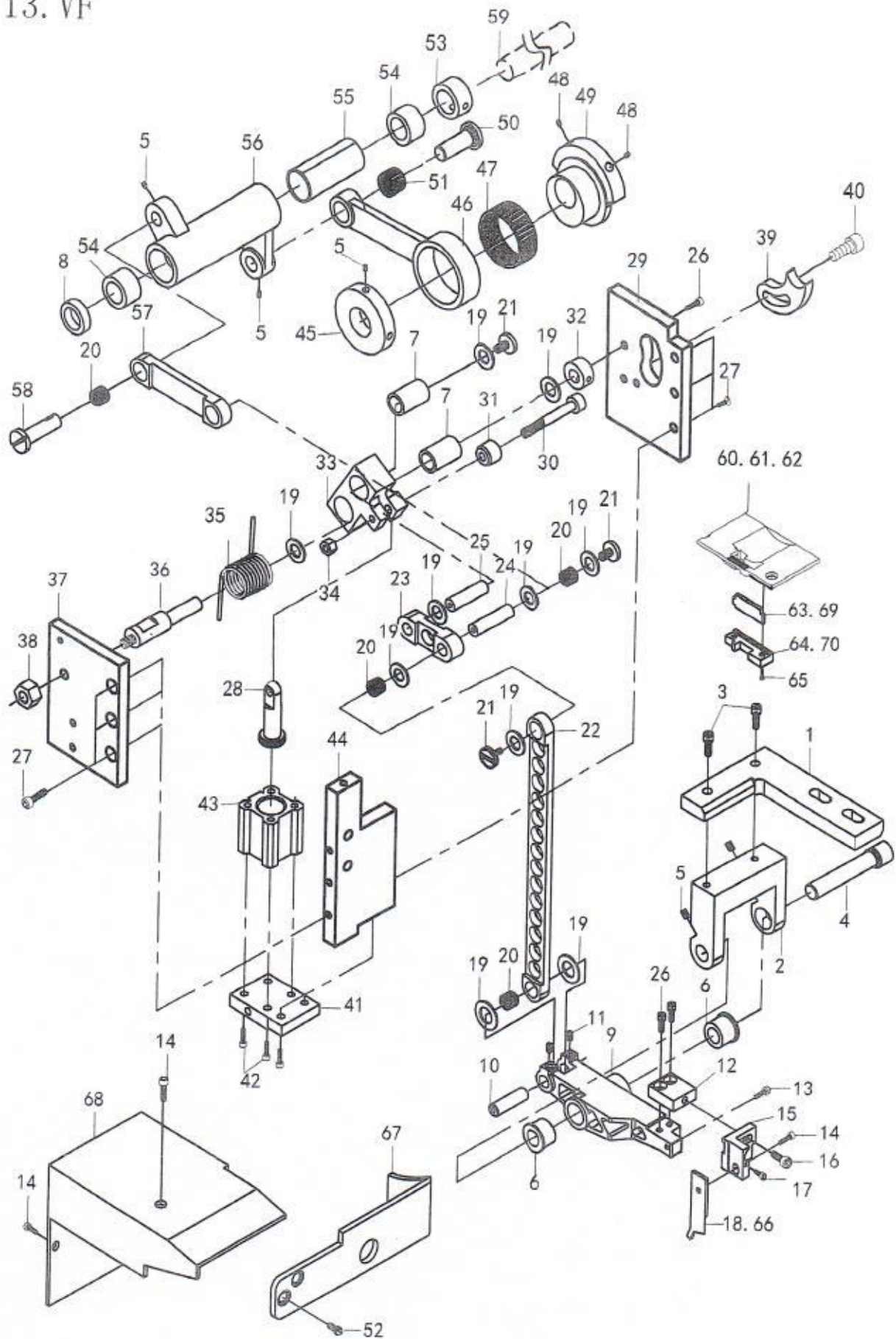
#01 1510VP用 #03 1510VP-7用

13. VF



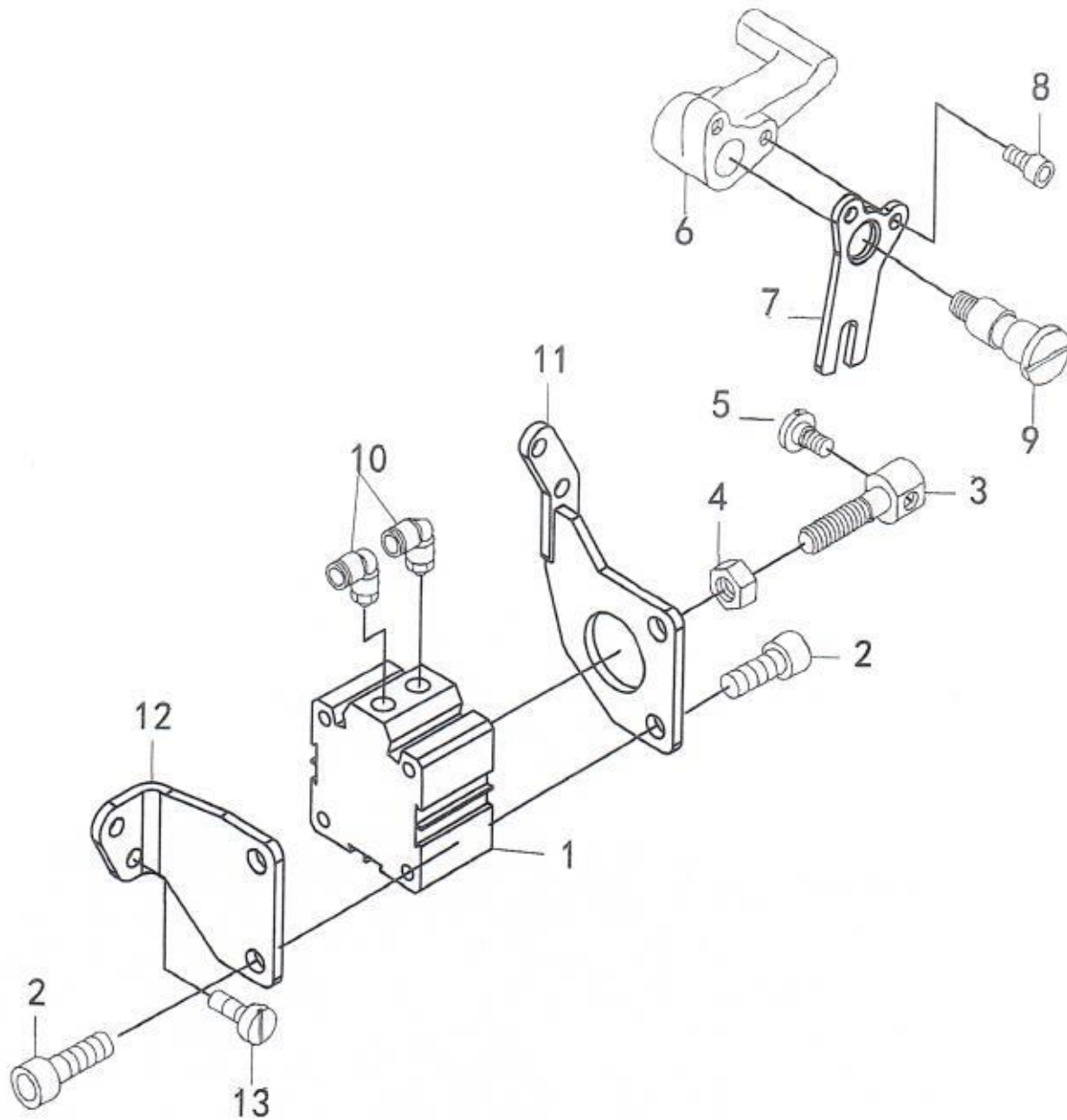
1	VF01	BASE	1
2	VF02	MOVING KNIFE FRAME	1
3	LS5A16	CYLINDER HEXAGON BOLT	2
4	VF04	FIXING KNIFE FRAME	1
5	LS5I5	HOLDING SCREW	6
6	VF06	SHAKING ARM	2
7	ZZNK8/16	BEARING	2
8	VF08	RING	1
9	VF09	MOVING KNIFE ARM	1
10	VF10	ARM CONNECTOR BEARING	1
11	LS4I40	HOLDING BOLT	2
12	VF12	KNIFE BASE	1
13	VF13	ADJUSTING BOLT	1
14	LS4A8	CYLINDER HEXAGON BOLT	5
15	VF15	MOVING KNIFE SHAFT	1
16	LS5A8	CYLINDER HEXAGON BOLT	2
17	LS3A6	CYLINDER HEXAGON BOLT	1
18	VFE05F	MOVING KNIFE	1
19	VF19	WASHER	12
20	ZZ081208	BEARING	4
21	O20464	DL ADJUSTING BOLT	4
22	VF22	LONG CONNECTING BAR	1
23	VF23	CONNECTING BAR	1
24	VF24	BAR CONNECT SHAFT	1
25	VF25	SWING CONNECT SHAFT	1
26	LS4A12	CYLINDER HEXAGON BOLT	3
27	LS5B10	SUNK HEXAGON BOLT	6
28	VF28	AIR CYLINDER BAR	1
29	VF29	SIDE GUIDING BOARD	1
30	LS5A40	CYLINDER HEXAGON BOLT	1
31	VF31	SCREW GASKET	1
32	VF32	RING	1
33	VF33	SHAKING SHAFT	1
34	VF34	LONGER HEXAGON NUT	1
35	O21006	TORSIONAL SPRING	1
36	VF36	SHAKING SHAFT BEARING	1
37	VF37	SIDE PLATE	1
38	LM8	HEXAGON NUT	1
39	VF82	Adjusting plate	1
40	LS6A12	CYLINDER HEXAGON BOLT	2
41	VF41	AIR CYLINDER BASE	1
42	LS5A16	CYLINDER HEXAGON BOLT	4
43	QG16F15	AIR CYLINDER	1
44	VF44	BACK BOARD	1
45	AE05	RING	1
46	VF46	CAM TRANSFERRING BAR	1
47	AE03	BEARING	1
48	O10403	HOLDING SCREW	2
49	AE01	CUTTER CAM	1
50	AE08	ARM CONNECTING PIN	1

13. VF



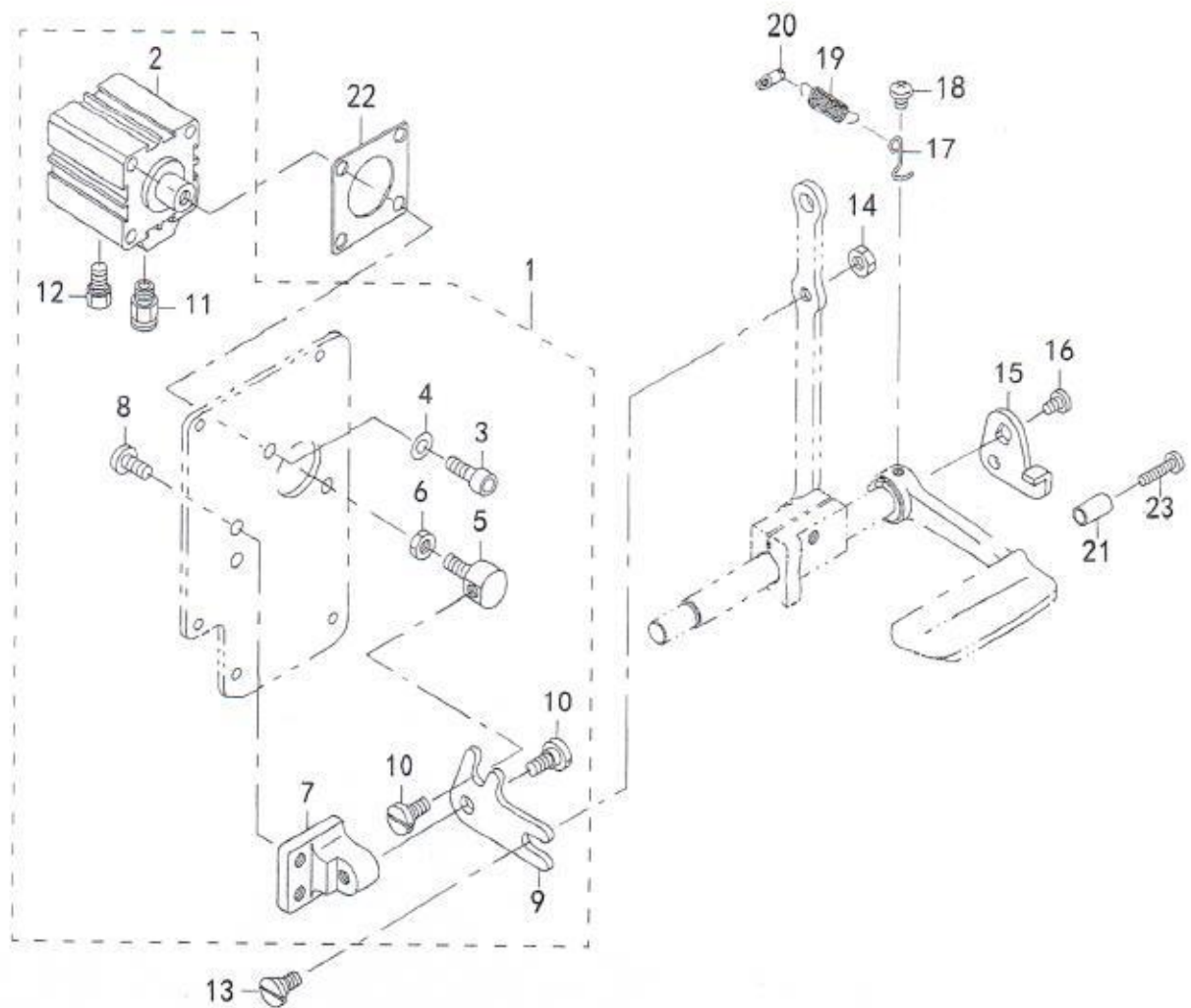
51		AE04	BEARING	1
52		021803	SCREW	2
53		020407	UPPER FEED RING	1
54		VF54	COPPER BUSH	2
55		VF55	FELT	1
56		VF56	SHAKING SET	1
57		VF57	CONNECTING BAR	1
58		VF58	CONNECTING BEARING	1
59		020401	UPPER FEED BEARING	(1)
60	Matching	VFE015D	THROAT PLATE(1.5MM)	1
61	Matching	VFE025D	THROAT PLATE(2.5MM)	1
62		VFE050D	THROAT PLATE(5MM)	1
63		VFE05G	FIXING KNIFE(5MM)	1
64		VFE05H	FIXING KNIFE PRESS IRON(5MM)	1
65		LS3A10	CYLINDER HEXAGON BOLT	2
66	Matching	VFE015F	MOVING KNIFE(1.5MM)	1
67		VF67	AIR SWICHER	1
68		VF71	COVER	1
69		VFE015G	FIXING KNIFE(1.5MM)	1
70	Matching	VFE015H	FIXING KNIFE PRESS IRON(1.5MM)	1

14. Automatic presser lifting mechanism



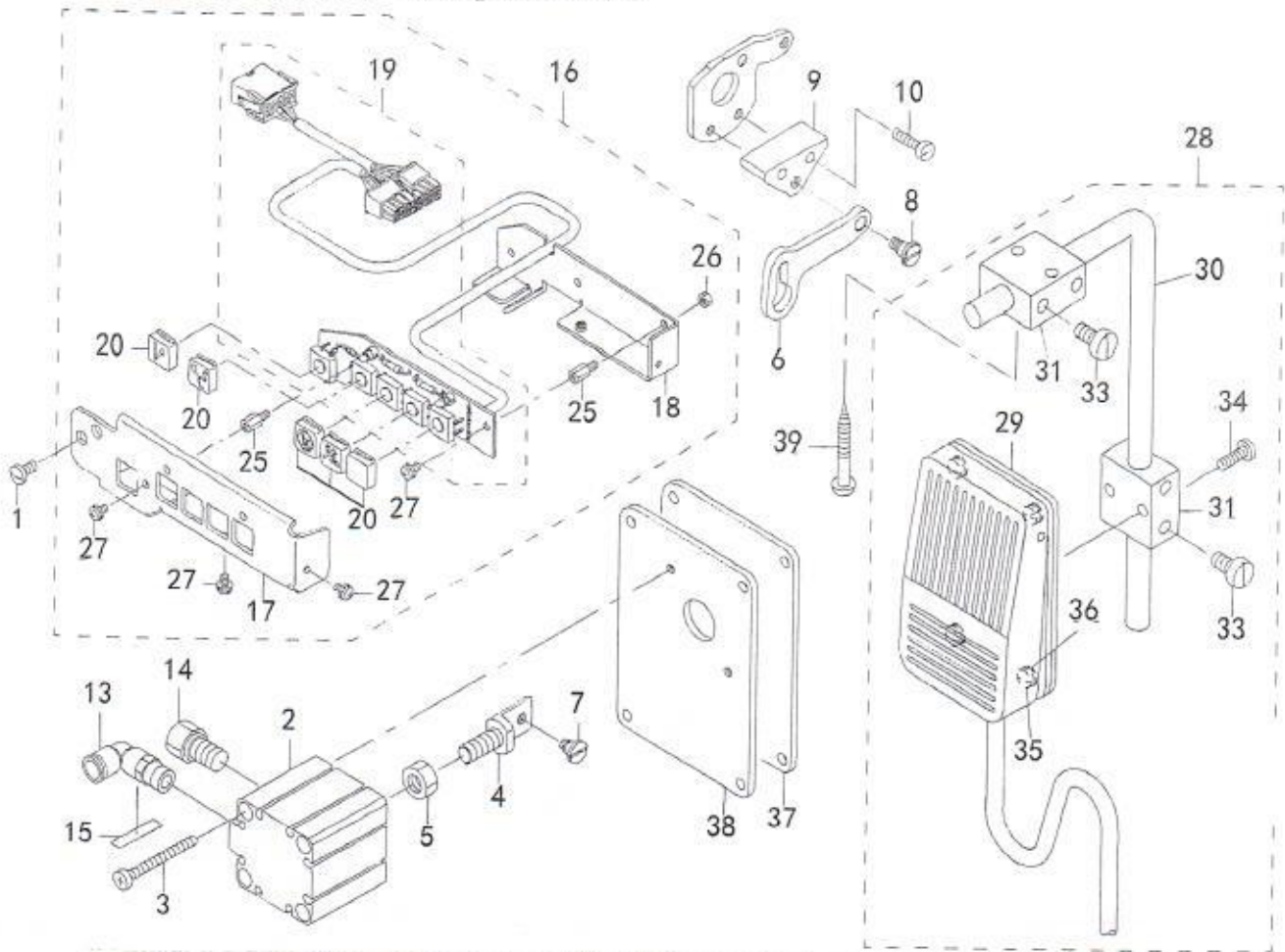
1	PA400150100	PRESSER FOOT LIFTING AIR CYLINDER	1
2	SM6082002TP	SCREW	4
3	VF75	CONNECTOR	1
4	M8	NUT	1
5	SD0720331SP	CONNECTOR SCREW	1
6	21356605	CRINKLE HANDLE	1
7	VF76	SHIFTING FORK	1
8	SM6051002TP	FIXING SCREW	1
9	21356704	CRINKLE HANDLE SCREW	1
10	PJ304065102	CRINKLE CONNECTOR	2
11	VF77	INSTALLING FRAME (FRONT)	1
12	VF78	INSTALLING FRAME (BACK)	1
13	SS6151040SP	FRAME FIXING SCREW	4

15. Automatic back components



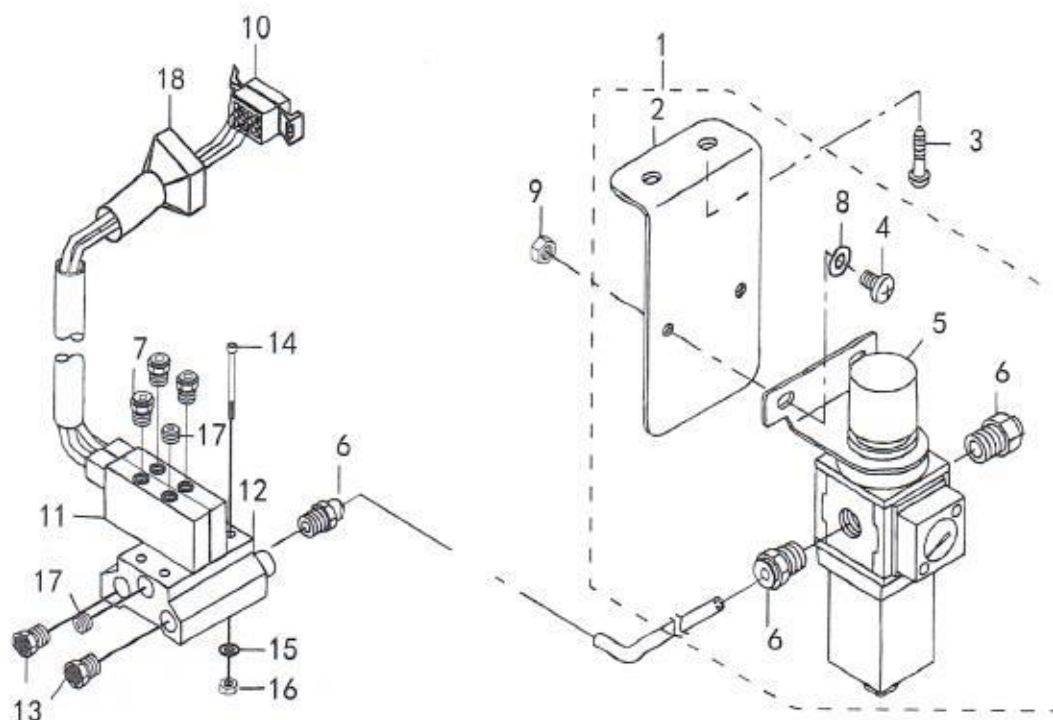
DESCRIPTION				
1	21348958	WINDOW PLATE ASM.		1
2	PA320150200	JIG CYLINDER		1
3	LS6A16	SCREW M6 L=16		2
4	WP0641601SD	WASHER M6		2
5	21348602	CYLINDER CONNECTING SCREW		1
6	NM6060003SC	NUT M6		1
7	21348503	FITTING BASE		1
8	SS7150910TP	SCREW 15/64-28 L=9		2
9	21348701	BACKWARD FEED LINK		1
10	SD0800352SP	HINGE SCREW D= 8 H= 3.5		2
11	SPC6-01	HALF UNION		1
12	PST01	MUFFLER		1
13	SD0800402TP	HINGE SCREW D= 8 H= 4		1
14	NS6150430SP	NUT 15/64-28		1
15	22656102	REVERSE FEED LINK (1)		1
16	SS7120760SP	SCREW 3/16-28 L= 7.0		1
17	22656003	SPRING SUSPENSION		1
18	SS4120615SP	SCREW 3/16-28 L=6		1
19	13515606	SPRING		1
20	10120004	SPRING SUSPENSION		1
21	11100500	REVERSE FEED LEVER STOPPER		1
22	21349105	CYLINDER PACKING		1
23	SS7112810SP	SCREW 11/64-40 L=28		1

16. DL mechanism components



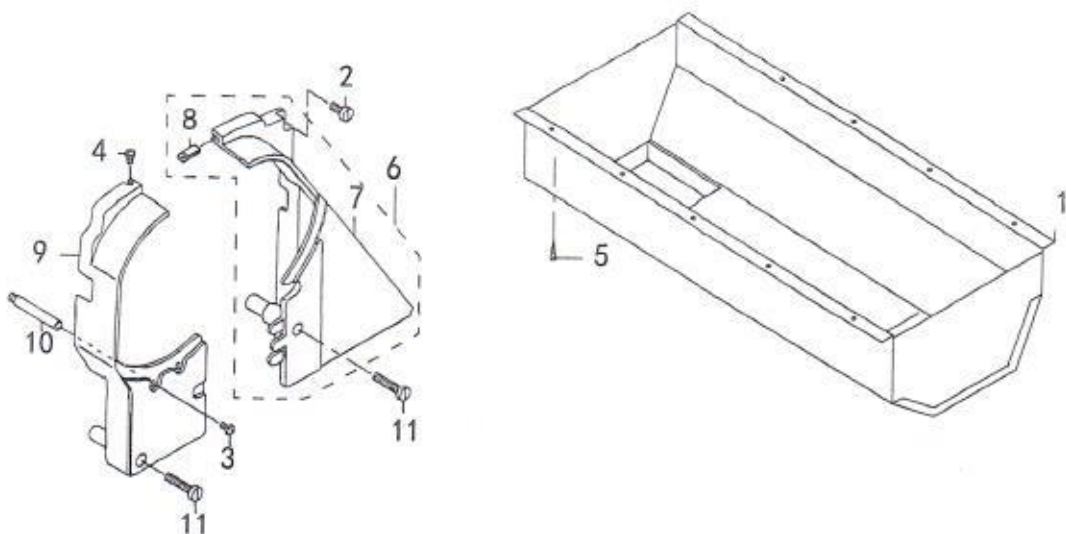
DESCRIPTION			
1	SS7110840SP	SCREW 11/64-40 L=7.8	2
2	PA320200100	JIG CYLINDER	1
3	SM6044002TP	SCREW	2
4	21438403	CYLYNDER CONNECTING SCREW	1
5	LM6	NUT M6	1
6	21438502	MUTUAL VERTICAL LINK	1
7	SD0600403TP	HINGE SCREW	1
8	SD0600454TP	SHOULDER SCREW	1
9	21438601	MUTUAL VERTICAL LINK SPASER	1
10	SS6111610SP	SCREW 11/64-40 L=16	2
13	SPC4-01	ELBOW	1
14	PST-01	MUFFLER	1
15	HX00295000C	WIRE MARK(4)	1
16	40024849	5RANGE SWITCH ASM.	1
17	21442603	SWITCH COVER	1
18	21442702	SWITCH CIRCUIT FITTING BASE	1
19	40024848	5RANGE SWITCH SUB(A) ASM.	1
20	21442900	KEY TOP	5
25	HX00354000N	SPACER	4
26	LM3	NUT M3	3
27	LS3E6	SCREW M3X6	4
28	40025036	KNEE SWITCH ASM.	1
29	40025035	KNEE SWITCH ASM.	1
30	MAT80231T00	DRIVING BAR T002	1
31	MAT80230T00	KNEE SWITCH SUPPORT BASE	2
33	SS6151220SP	SCREW 15/64-28 L=11.5	4
34	SS7111410SP	SCREW 11/64-40 L=14	2
35	SS7110710SL	SCREW 11/64-40 L=7.0	4
36	WP0480856SP	WASHER 4. 8X8. 4X0. 8	4
37	21437306	WINDOW PLATE E PACKING	1
38	21437207	WINDOW PLATE F	1
39	SK3514000SC	WOOD SCREW D=5. 1 L=40	2

17. Air mechanism components



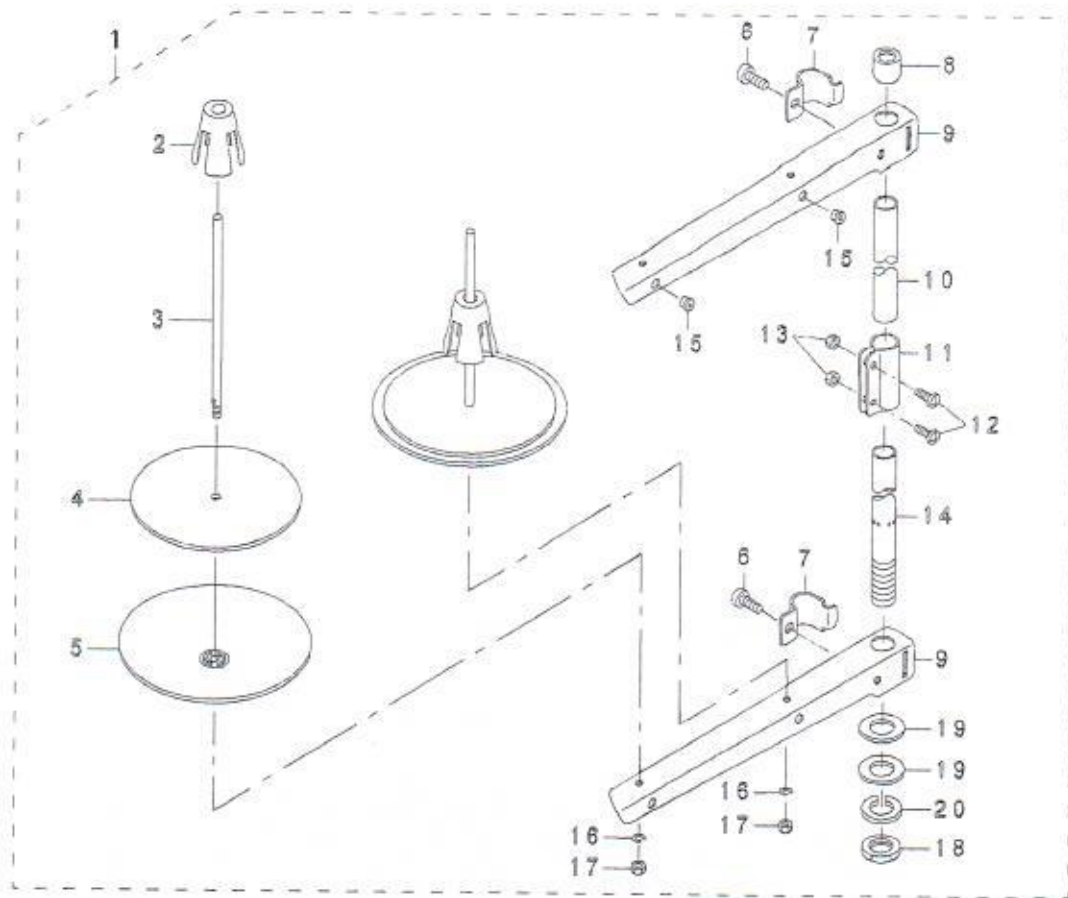
1	021701	AIR APPARATUS (B) ASM.	1
2	40038723	Mounting panel	2
3	SK3514000SC	SCREW D=4.1 L=20	2
4	LS5A10	SCREW M5 L=10	2
5	PF0552170AD	FILTER REGULATOR	1
6	SPC8-02	NIPPLE	3
7	SPC4-02	NIPPLE	3
8	PD5	Flat pad	4
9	LM5	NUT	2
10	021710	RECEPTACLE	<1>
11	4V2008B	ELECTROMAGNETIC VALVE C	<2>
12	200M-2F	OUNTING PLAT	<1>
13	PST-02	NIPPLE	4
14	LS4A25	SCREW M4 L=25	2
15	PD4	Flat pad	4
16	LM4	NUT	2
17	BD02	Plug	5
18	JT12	Rubber sleeve	1

18. Accessories parts components



序号	说明	编码及型号	英文名称	中文名称	数量
1		021801B	OIL RESERVOIR ASM.	大油盘	1
2		SS6151440SP	SCREW 15/64-28 L=14	皮带罩螺钉	1
3		SS4110815SP	SCREW 11/64-40 L=7.8	皮带罩螺钉	1
4		SS5110740TP	SCREW 11/64-40 L= 6.5	皮带罩连接螺钉	1
5		10539906	WOOD SCREW D=2.4 L=16	铁钉	8
6		21351150	BELT COVER ASM. (RIGHT)	皮带罩组件	1
7		21351101	BELT COVER (RIGHT)	皮带罩	1
8		21351002	BELT COVER AUXILIARY PLATE	皮带罩连接块	1
9		21351200	BELT COVER (LEFT)	皮带罩B	1
10		D8232241E00	BELT COVER SUPPORT A	皮带罩撑杆	1
11		SS6153040SP	SCREW 15/64-28 L=30	皮带罩螺钉	2

19. Thread stand components



1	22930358	THREAD STAND ASM.	1
2	22931109	SPOOL RETAINER	(2)
3	22931000	SPOOL PIN	(2)
4	22930903	SPOOL REST CUSHION	(2)
5	22930804	SPOOL REST	(2)
6	SM6061610SC	SCREW M6 L=16	(2)
7	22930705	THREAD GUIDE ARM JOINT	(2)
8	22931406	SPOOL REST ROD RUBBER CAP	(1)
9	22930507	SPOOL REST ARM	(2)
10	22931308	SPOOL REST ROD UPPER	(1)
11	22931307	SPOOL REST ROD JOINT	(1)
12	SM4051408SE	SCREW M5 L=14	(2)
13	NM6050001SE	NUT M5	(2)
14	22930309	SPOOL REST ROD LOWER	(1)
15	22931208	THREAD GUIDE	(2)
16	WS0510002KN	SPRING WASHER	(2)
17	NM6050001SE	NUT M5	(2)
18	NM6160511SE	NUT M16X1.5	(1)
19	WP1612616SE	WASHER 16X30X2.6	(2)
20	WS1643202KP	SPRING WASHER	(1)