

GLOBAL

FOZ 1520 DD Series

Feed off the arm zig-zag Direct drive machines

Spare parts

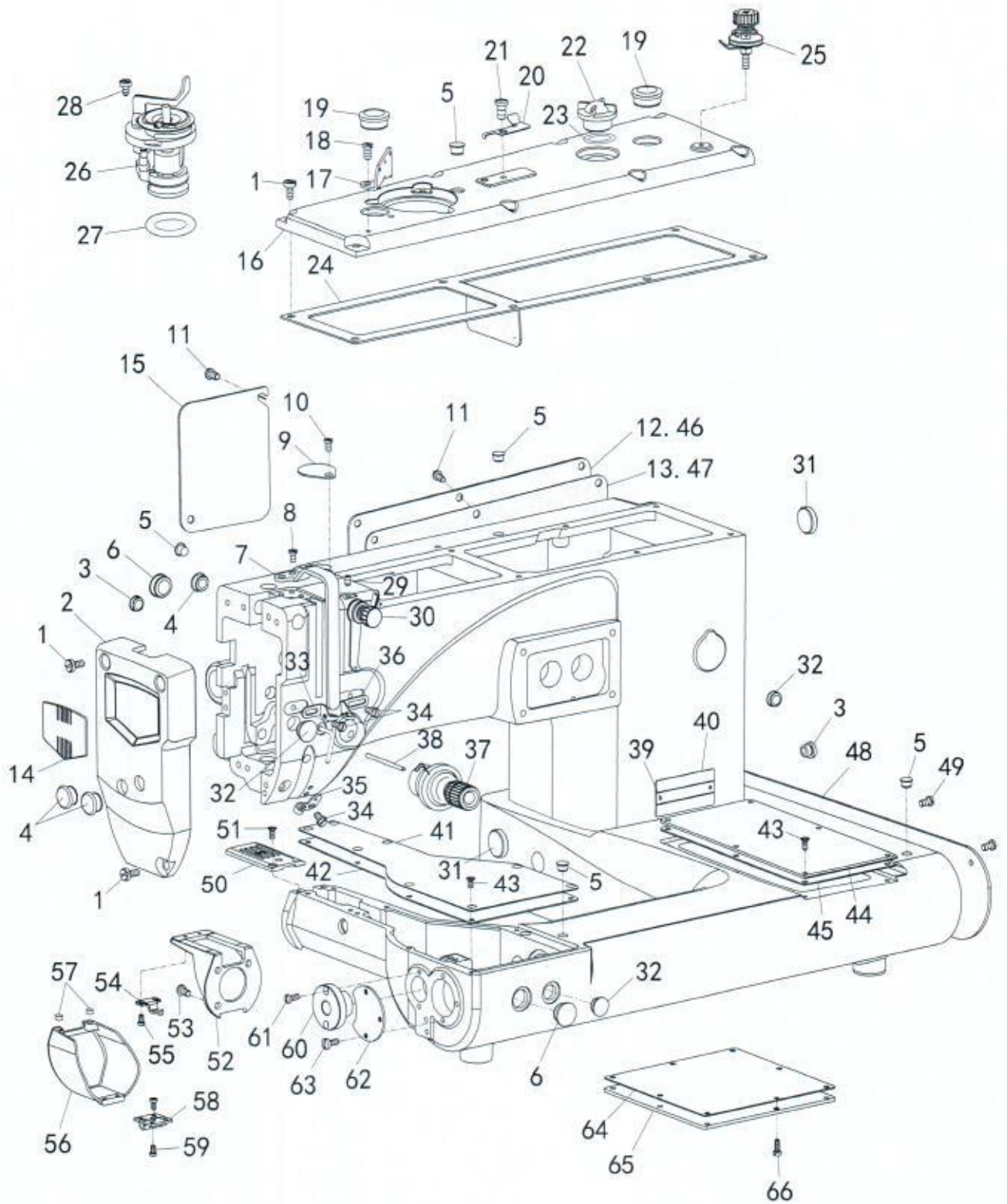
Always switch off the electricity when working on the machine.

零件样本

Parts Catalog

1. 机壳分组件/Machine body	1-2
2. 上轴. 竖轴. 挑线机构/Upper shaft mechanism	3-4
3. 摆针机构/Lower shaft mechanism	5-6
4. 缝目调节. 下送布机构/Presser foot mechanism. Feed mechanism	7-8
5. 抬压脚机构/Presser foot mechanism	9-10
6. 多点摆针机构/3&4 points mechanism	9-10
7. 上送料机构/Feed mechanism For (2522D、2523D、2524D)	11-12
8. 自动抬压脚机构/ components	13-14
9. 电控部件/Driver components	15-16
10. 供油机构/Oil lubrication mechanism	17-18
11. 附件/Assessor ies	17-18

1. 机壳分组件/Machine body

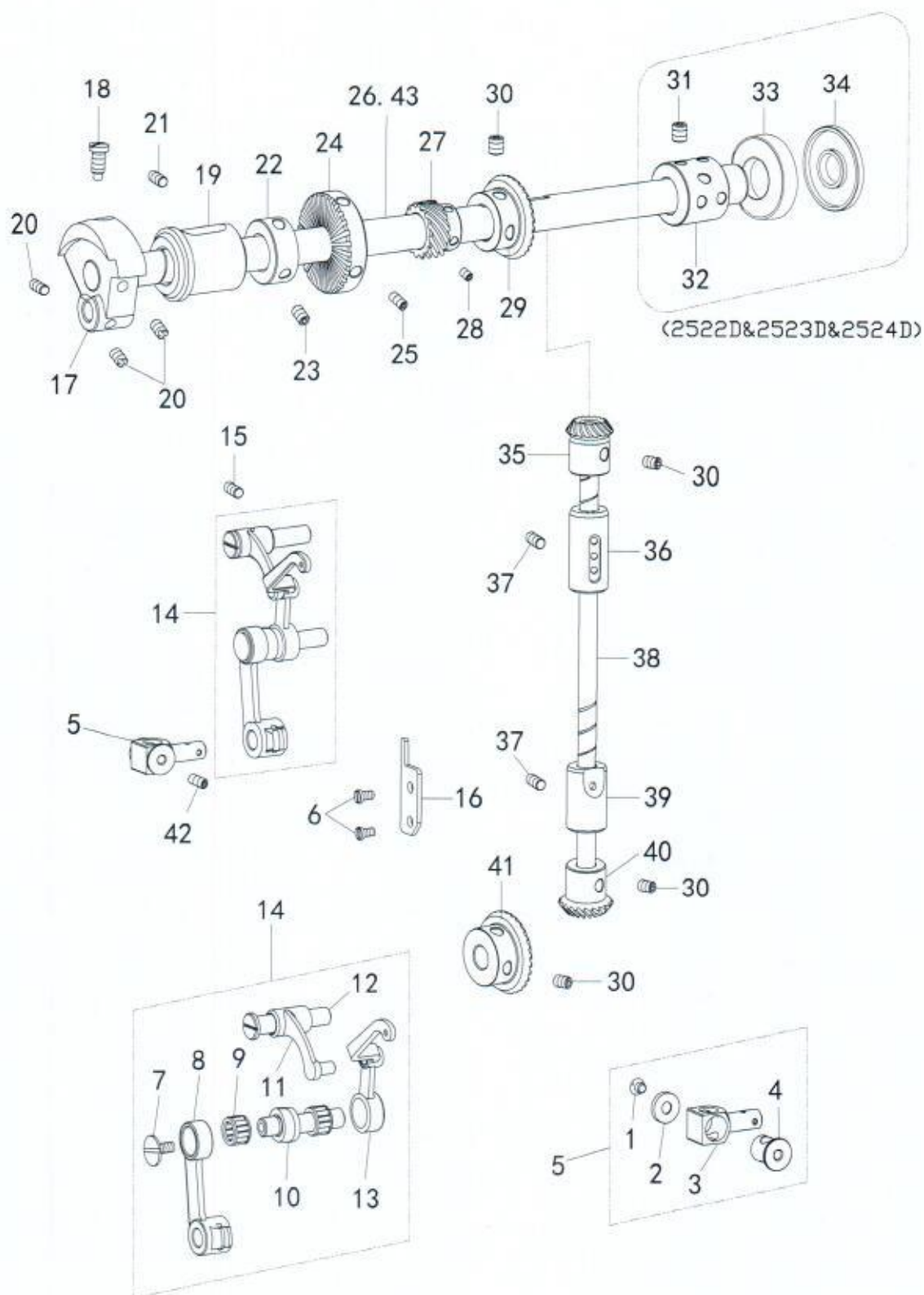


1. 机壳分组件/Machine body

序号 No.	图号 Part No.	名称	DESCRIPTION	数量 QTY	备注 Remark
1	15221-001	螺丝11/64-40 L=10	Screw 11/64-40 L=10	11	
2	15221-002	面板	Face plate	1	
3	15221-003	橡皮塞	Rubber plug Ø10.8x5	1	
4	15221-004	橡皮塞	Rubber plug Ø11.8x5	4	
5	15221-005	橡皮塞	Rubber plug Ø8.8x5	6	
6	15221-006	橡皮塞	Rubber plug Ø15.5x5	2	
7	15221-007	挑线杆防护罩	Thread take-up lever cover	1	
8	15221-008	螺丝11/64-40 L=8	Screw 11/64-40 L=8	2	
9	15221-009	挡板	Plate	1	
10	15221-010	螺丝11/64-40 L=5	Screw 11/64-40 L=5	1	
11	15221-011	螺丝3/16-28 L=9	Screw 3/16-28 L=9	10	
12	15221-012	后窗板	Side plate	1	
13	15221-013	后窗板垫	Gasket	1	
14	15221-014	面板贴	Face plate	1	
15	15221-015	侧板	Side plate	1	02#
16	15221-016	顶盖	Top cover	1	
17	15221-017	三孔线勾	Thread retainer	1	
18	15221-018	螺丝3/16-28 L=6	Screw 3/16-28 L=6	1	
19	15221-019	橡皮塞	Rubber plug Ø18.8x6	2	
20	15221-020	割线刀	Cutter	1	
21	15221-021	螺丝3/16-28 L=6	Screw 3/16-28 L=6	1	
22	15221-022	油窗	Oil sight window	1	
23	15221-023	油窗O型圈	Rubber ring	1	
24	15221-024	顶盖垫	Top cover packing	1	
25	15221-025	底线夹线器	Bobbin thread tension	1	
26	15221-026	绕线器	Bobbin winder	1	
27	15221-027	绕线器O型圈	Rubber ring	1	
28	15221-028	螺钉3/16-32 L=7	Screw 3/16-32 L=7	3	
29	15221-029	螺丝11/64-40 L=6	Screw 11/64-40 L=6	1	
30	15221-030	小夹线器组件	Thread guide assy	1	
31	15221-031	橡皮塞	Rubber plug Ø16.15x5	2	
32	15221-032	橡皮塞	Rubber plug Ø12.5	3	
33	15221-033	左线勾	Thread guide	1	
34	15221-034	螺丝9/64-40 L=7	Screw 9/64-40 L=7	3	
35	15221-035	上座下线勾	Thread guide	1	02#
36	15221-036	右线勾	Thread guide	1	
37	15221-037	夹线器组件	Thread tension bracket assy.	1	
38	15221-038	松线辅钉	Tension release pin	1	
39	15221-039	型号牌铆钉	Pole	2	
40	15221-040	型号牌	Model plate	1	
41	15221-041	曲臂盖板	Cover plate	1	
42	15221-042	曲臂盖板垫	Seal	1	
43	15221-043	螺丝M4 L=7	M4 L=7	14	
44	15221-044	右盖板	Cover plate	1	
45	15221-045	右盖板垫	Seal	1	
46	15221-046	后窗板	Side plate	1	02#
47	15221-047	后窗板垫	Gasket	1	02#
48	15221-048	侧盖板	Cover plate	1	
49	15221-049	螺丝 11/64-40 L=6	Model plate	3	
50	15221-050	针板	Needle plate	1	
51	15221-051	螺丝 11/64-40 L=8	Screw 11/64-40 L=8	2	
52	15221-052	针板支架	Holder	1	
53	15221-053	螺丝 11/64-40 L=8	Screw 11/64-40 L=8	3	
54	15221-054	定位勾	B/case holder position bracket	1	
55	15221-055	螺丝 9/64-40 L=6	Screw 11/64-40 L=6	2	
56	15221-056	旋梭罩	Cover piece	1	
57	15221-057	磁钢5*4	Magnetic steel	2	
58	15221-058	合页	Hinge	1	
59	15221-059	螺丝M3 L=5.5	M3 L=5.5	4	
60	15221-060	滑块槽套	Shaft sleeve	1	
61	15221-061	螺丝 9/64-40 L=8	Screw 9/64-40 L=8	2	
62	15221-062	轴承盖板	Side plate	1	
63	15221-063	螺丝 9/64-40 L=8	Screw 9/64-40 L=8	3	
64	15221-064	底盖板垫	Side plate	1	
65	15221-065	底盖板	Throat plate	1	
66	15221-066	螺丝 11/64-40 L=10	Screw 11/64-40 L=10	6	

... 02# FOR 2522D, 2523D, 2524D

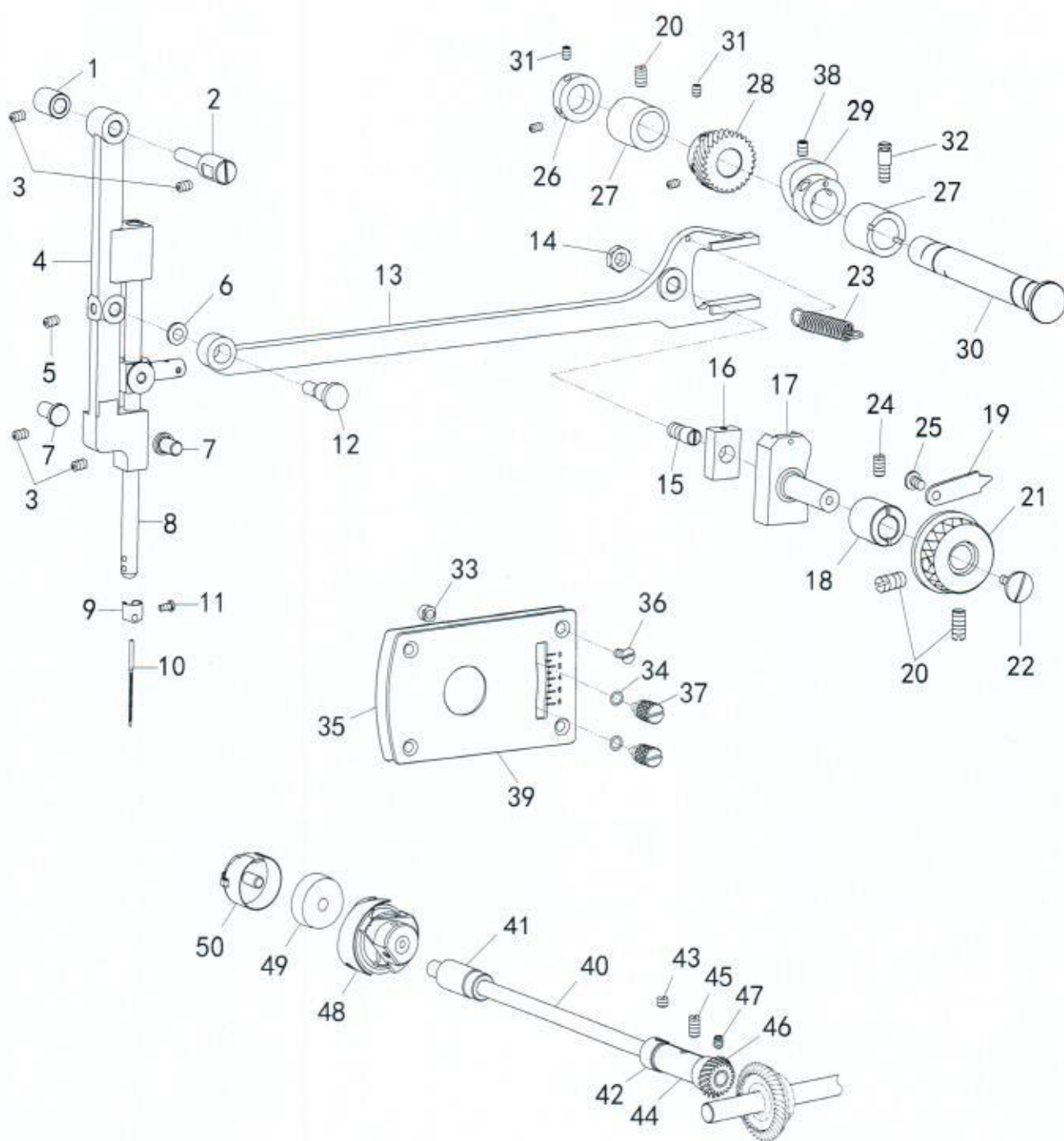
2. 上轴. 竖轴. 挑线机构/Upper shaft mechanism



2. 上轴. 竖轴. 挑线机构/Upper shaft mechanism

序号 No.	图号 Part No.	名称	DESCRIPTION	数量 QTY	备注 Remark
1	15222-001	螺丝 11/64-40 L=3.5	Screw 11/64-40 L=3.5	1	
2	15222-002	垫片	Washer	1	
3	15222-003	针杆接头	Needle bar clamp	1	
4	15222-004	针杆接头销	Bush	1	
5	15222-005	针杆接头组件	Needle bar clamp assy	1	
6	15222-006	螺丝 11/64-40 L=6	Screw 11/64-40 L=6	2	
7	15222-007	L螺丝 9/64-40 L=4.8	End screw left 9/64-40 L=4.8	1	
8	15222-008	针杆连杆	Needle bar crank rod	1	
9	15222-009	滚针轴承	Needle bearing	1	
10	15222-010	挑线曲柄	Needle bar crank	1	
11	15222-011	挑线连杆	Thread take-up bar	1	
12	15222-012	挑线连杆销	Thread take-up crank shaft	1	
13	15222-013	挑线连杆分组件	Thread take-up lever	1	
14	15222-014	挑线杆组件	Thread take-up lever ASM	1	
15	15222-015	螺丝15/64-28 L=13	Screw 15/64-28 L=13	1	
16	15222-016	针杆连杆导位块	Needle bar link guide	1	
17	15222-017	针杆曲柄	Thread take-up crank	1	
18	15222-018	螺丝9/32x28	Screw SM9/32x28	1	
19	15222-019	上轴前套	Upper shaft bush (front)	1	
20	15222-020	螺丝1/4-40 L=7	Screw 1/4-40 L=7	3	
21	15222-021	螺丝15/64-28 L=13	Screw 15/64-28 L=13	1	
22	15222-022	上轴挡圈	Collar	1	
23	15222-023	螺丝1/4-40 L=8	Screw 1/4-40 L=8	2	
24	15222-024	绕线摩擦轮	Friction wheel	1	
25	15222-025	螺丝11/64-40 L=6	Screw 11/64-40 L=6	2	
26	15222-026	上轴	Upper shat	1	
27	15222-027	摆针传动齿轮(上)	Bevel gear (upper)	1	
28	15222-028	螺丝11/64-40 L=4	Screw 11/64-40 L=4	2	
29	15222-029	上轴齿轮 Z=3	Upper shaft bevel gear	1	
30	15222-030	螺丝1/4-40 L=6	Screw 1/4-40 L=6	8	
31	15222-031	螺丝M6 L=6	M6 L=6	4	
32	15222-032	连轴器	Coupling	1	
33	15222-033	轴承	Bearing	1	
34	15222-034	密封圈	Seal ring	1	
35	15222-035	竖轴上齿轮 Z=22	Vertical shaft bevel gear (upper)	2	
36	15222-036	竖轴上套	vertical shaft bush (upper)	1	
37	15222-037	螺丝15/64-28 L=6	Screw 15/64-28 L=6	2	
38	15222-038	竖轴	vertical shaft	2	
39	15222-039	竖轴下套	vertical shaft bush (lower)	1	
40	15222-040	竖轴下齿轮 Z=28	Vertical shaft bevel gear (lower)	1	
41	15222-041	下轴右齿轮 Z=21	Lower shaft bevel gear	1	
42	15222-042	螺丝11/64-40 L=6	Set Screw 11/64-40 L=6	1	
43	15222-043	上轴	Upper shat	1	

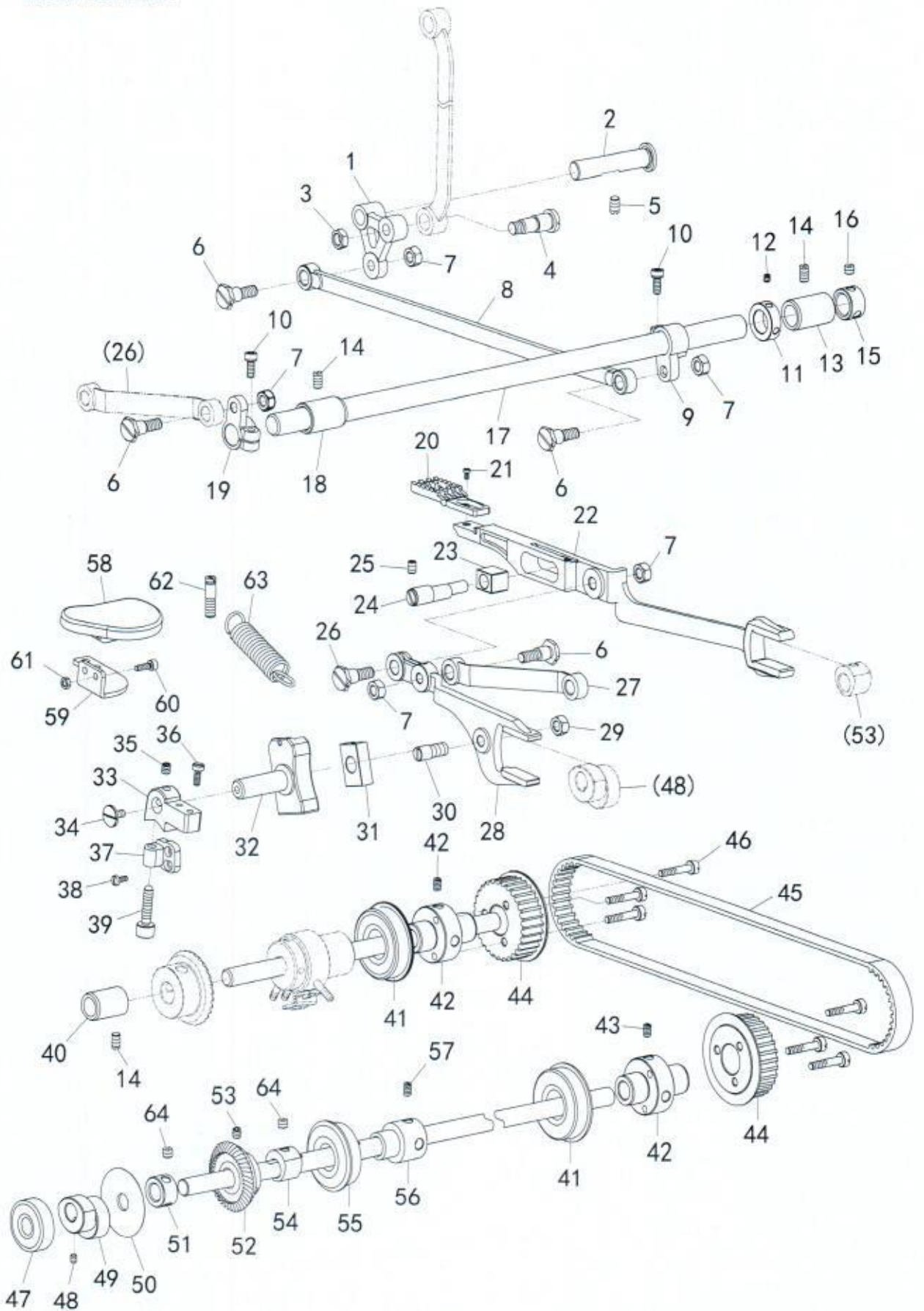
3. 摆针机构/Lower shaft mechanism



3. 摆针机构、梭轴机构/Lower shaft mechanism、Hook

序号 No.	图号 Part No.	名称	DESCRIPTION	数量 QTY	备注 Remark
1	15223-001	摆针架悬吊轴套	Needle bar frame pin bush	1	
2	15223-002	摆针架悬吊轴	Needle bar frame pin	1	
3	15223-003	螺丝11/64-40 L=6	Screw 11/64-40 L=6	1	
4	15223-004	摆针架	Needle bar frame	1	
5	15223-005	螺丝11/64-40 L=6	Screw 11/64-40 L=6	1	
6	15223-006	垫片W5*10*1 Washer	W5*10*1 Washer	1	
7	15223-007	摆针架下挡套	Needle bar frame position	1	
8	15223-008	针杆	Needle bar	1	
9	15223-009	针杆过线环	Needle bar thread guide	1	
10	15223-010	机针	Needle	1	
11	15223-011	螺丝 1/8-44 L=4.5	1/8-44 L=4.5	1	
12	15223-012	偏心销	Pin	1	
13	15223-013	摆针传动二又	Feed dog fork	1	
14	15223-014	螺母 9/32-28 L=4	Nut 9/32-28 L=4	1	
15	15223-015	传动二又滑块轴	Screw 9/32-28	1	
16	15223-016	传动二又滑块	Slide block	1	
17	15223-017	传动二又滑块座	Regulator	1	
18	15223-018	传动二又滑块座套	Regulator bush	1	
19	15223-019	摆幅指针	Indicalor	1	
20	15223-020	螺丝15/64-28 L=10	Screw 15/64-28 L=10	1	
21	15223-021	摆幅手转轮	Dial	1	
22	15223-022	螺丝3/16-28 L=8	Screw 11/64-40 L=8	1	
23	15223-023	摆针传动二又拉簧	Spring holder	1	
24	15223-024	螺丝15/64-28 L=11	Screw 15/64-28 L=11	1	
25	15223-025	螺丝11/64-40 L=7	Screw 11/64-40 L=7	1	
26	15223-026	摆针传动轴挡圈	Collar	1	
27	15223-027	摆针传动轴套	Bush	2	
28	15223-028	摆针传动齿轮(下)	Bevel gear(down)	1	
29	15223-029	摆针传动偏心轮	Cam	1	
30	15223-030	摆针传动轴	Shaft	1	
31	15223-031	螺丝11/64-40 L=4	Screw 11/64-40 L=4	4	
32	15223-032	挂簧螺丝15/64-28	15/64-28	1	
33	15223-033	螺母11/64-40 L=3.5	11/64-40 L=3.5	2	
34	15223-034	O型圈 Rubber ring	Rubber ring	2	
35	15223-035	板垫	Gasket	1	
36	15223-036	螺丝11/64-40 L=7	Screw 11/64-40 L=7	4	
37	15223-037	压花螺丝11/64-40	11/64-40	2	
38	15223-038	螺丝 15/64-28 L=7	Screw 15/64-28 L=7	2	
39	15223-039	摆幅指示板	Graduated plate	1	
40	15223-040	梭轴	Hook shaft	1	
41	15223-041	下轴左套	Front bushing	1	
42	15223-042	下轴挡圈	Lower shaft collar	1	
43	15223-043	螺丝15/64-28 L=5	Screw 15/64-28 L=5	2	
44	15223-044	下轴右套	Rear bushing	1	
45	15223-045	螺丝15/64-28 L=10	Screw 15/64-28 L=10	1	
46	15223-046	下轴齿轮	Gear of hook driving shaft	1	
47	15223-047	螺丝 1/4-40 L=6	Screw 1/4-40 L=6	2	
48	15223-048	旋梭	Hook ASM.	1	
49	15223-049	梭芯	Bobbin	1	
50	15223-050	梭壳	Bobbin case ASM.	1	

4. 缝目调节. 下送布机构/Presser foot mechanism. Feed mechanism



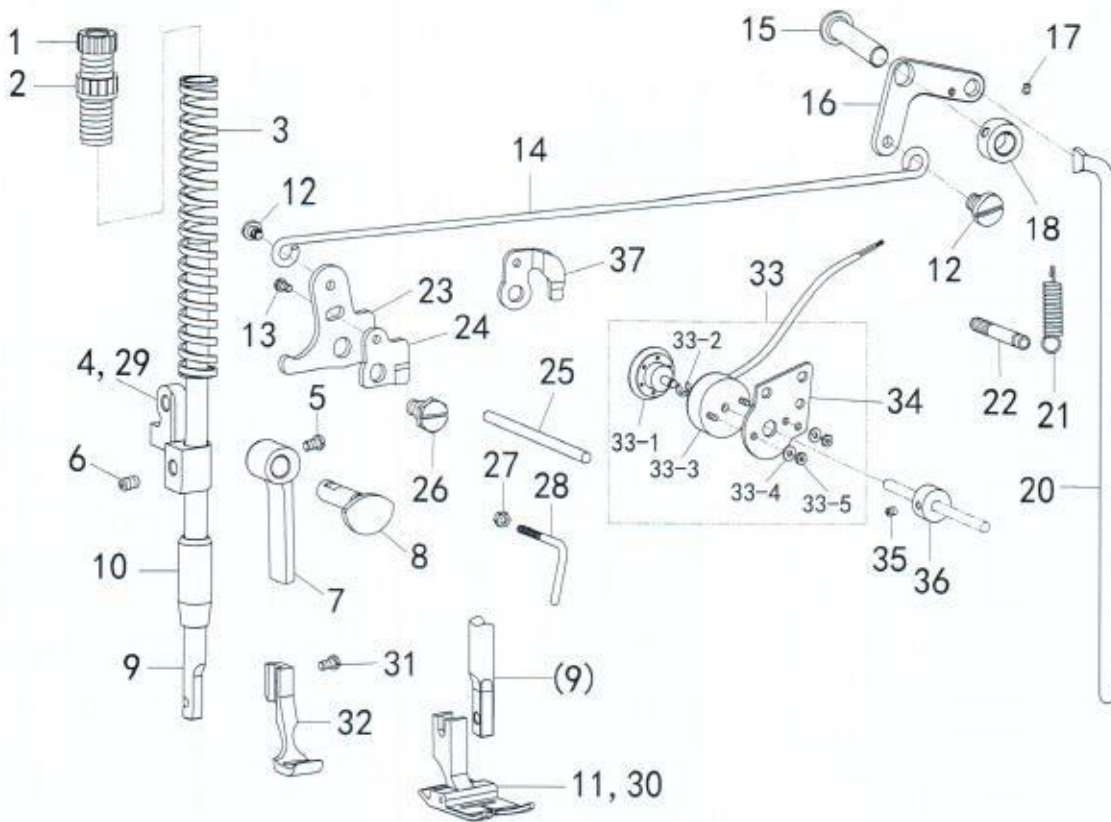
4. 缝目调节机构/Stitch width regulator mechanism

下送布机构/Feed mechanism

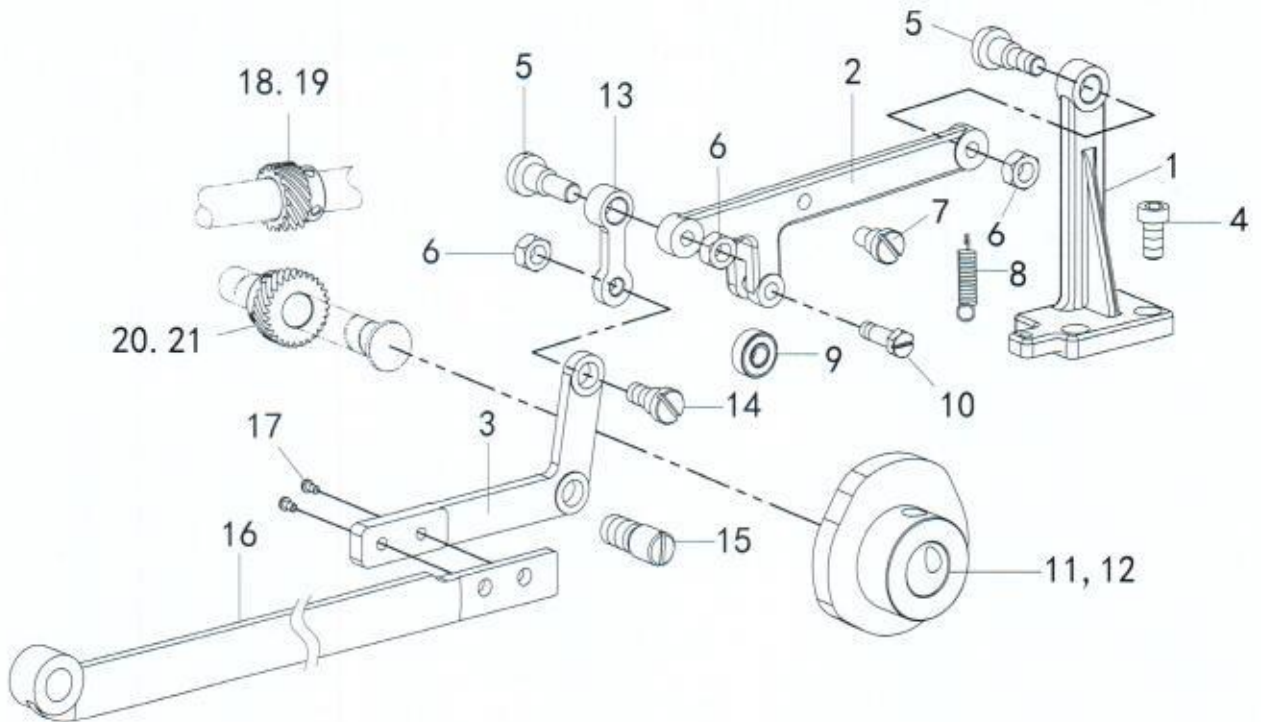
序号 No.	图号 Part No.	名称	DESCRIPTION	2	备注 Remark
1	15224-001	三角架	Tripod	1	02#
2	15224-002	销	Pin	1	02#
3	15224-003	螺母9/32-28	Nut 9/32-28	1	02#
4	15224-004	针距连杆	Feed connecting link	1	02#
5	15224-005	螺丝15/64-28 L=13	Screw 15/64-28 L=13	1	02#
6	15224-006	轴位螺丝1/4-40 D=7.94	Screw 1/4-40 D=7.94	4	02#
7	15224-007	螺母 1/4-40	Nut 1/4-40	5	02#
8	15224-008	长连杆	Connecting rod	1	02#
9	15224-009	转换右曲柄	Crank	1	02#
10	15224-010	螺丝M5 L=12	M5 L=12	2	02#
11	15224-011	挡圈	Retaining rings	1	02#
12	15224-012	螺丝 11/64-40 L=4	Screw 11/64-40 L=4	2	02#
13	15224-013	转换轴右套	Right shaft sleeve	1	02#
14	15224-014	螺丝15/64-28 L=13	Screw 15/64-28 L=13	3	02#
15	15224-015	挡圈	Retaining rings	1	02#
16	15224-016	螺丝1/4-40 L=4	Screw 1/4-40 L=4	2	02#
17	15224-017	转换轴	Conversion axis	1	02#
18	15224-018	转换轴左套	Left shaft sleeve	1	02#
19	15224-019	左曲柄	Left crank	1	02#
20	15224-020	送布牙	Feed dog	1	
21	15224-021	螺丝9/64-40 L=6	Screw 9/64-40 L=6	2	
22	15224-022	送料台	Feeding table	1	
23	15224-023	滑块	Slider	1	
24	15224-024	偏心销	Eccentric pins	1	
25	15224-025	螺丝 11/64-40 L=6	Screw 11/64-40 L=6	1	
26	15224-026	轴位长螺丝1/4-40 D=7.94	Screw 1/4-40 D=7.94	1	02#
27	15224-027	送布同步连杆	Feed synchronous linkage	1	
28	15224-028	送布连杆	Feed the connecting rod	1	
29	15224-029	螺母 9/32-28 L=4	Nut 9/32-28	1	
30	15224-030	传动二叉滑块轴	Scscrew 9/32-28	1	
31	15224-031	滑块	Slider	1	
32	15224-032	倒缝滑块槽	Inverted seam slider groove	1	
33	15224-033	针距调节摆杆	Feed regulator	1	
34	15224-034	螺丝 3/16-28 L=8	Screw 3/16-28 L=8	1	
35	15224-035	螺丝 15/64-28 L=6	Screw 15/64-28 L=8	2	
36	15224-036	螺丝 11/64-28 L=10	Screw 11/64-40 L=10	2	
37	15224-037	针距调节螺杆座	Pitch adjustment screw holder	1	
38	15224-038	螺丝 9/64-28 L=8	Screw 9/64-40 L=8	2	
39	15224-039	针距调节螺杆	Gauge adjustment screw	1	
40	15224-040	同步带转换轴左轴套	Left shaft sleeve	1	
41	15224-041	轴承	Bearing	2	
42	15224-042	轴承衬套	Bearing bushings	2	
43	15224-043	螺丝 15/64-28 L=8	Screw 15/64-28 L=8	4	
44	15224-044	同步带轮	Timing pulley	2	
45	15224-045	同步带	Timing belt	1	
46	15224-046	螺丝 M4 L=21	M4 L=21	6	
47	15224-047	轴承	Bearing	1	
48	15224-048	螺丝 15/64-28 L=6	Screw 11/64-40 L=6	1	
49	15224-049	送布凸轮	Cloth feed cam	1	
50	15224-050	二叉挡板	Baffle	1	
51	15224-051	挡圈	Retaining rings	1	
52	15224-052	大齿轮	Cogs	1	
53	15224-053	螺丝 M6X0.75 L=6	M6X0.75 L=6	3	
54	15224-054	拍牙凸轮	Tooth lifting cam	1	
55	15224-055	轴承	Bearing	1	
56	15224-056	轴承衬套	Bearing bushings	1	
57	15224-057	螺丝 1/4-40 L=6	Screw 1/4-40 L=6	2	
58	15224-058	倒缝把手	Inverted seam handle	1	
59	15224-059	把手支架	Bracket	1	
60	15224-060	螺丝 M4 L=12	M4 L=12	2	
61	15224-061	螺母 M4	Nut M4	2	
62	15224-062	复位簧销	Pin	1	
63	15224-063	复位簧	Reset spring	1	
64	15224-064	螺丝15/64-28 L=4.5	Screw 15/64-28 L=4.5	3	

... 02# FOR 2522D, 2523D, 2524D

5. 抬压脚机构/Presser foot mechanism



6. 多点摆针机构/3&4 points mechanism



5. 抬压脚机构/Presser foot mechanism

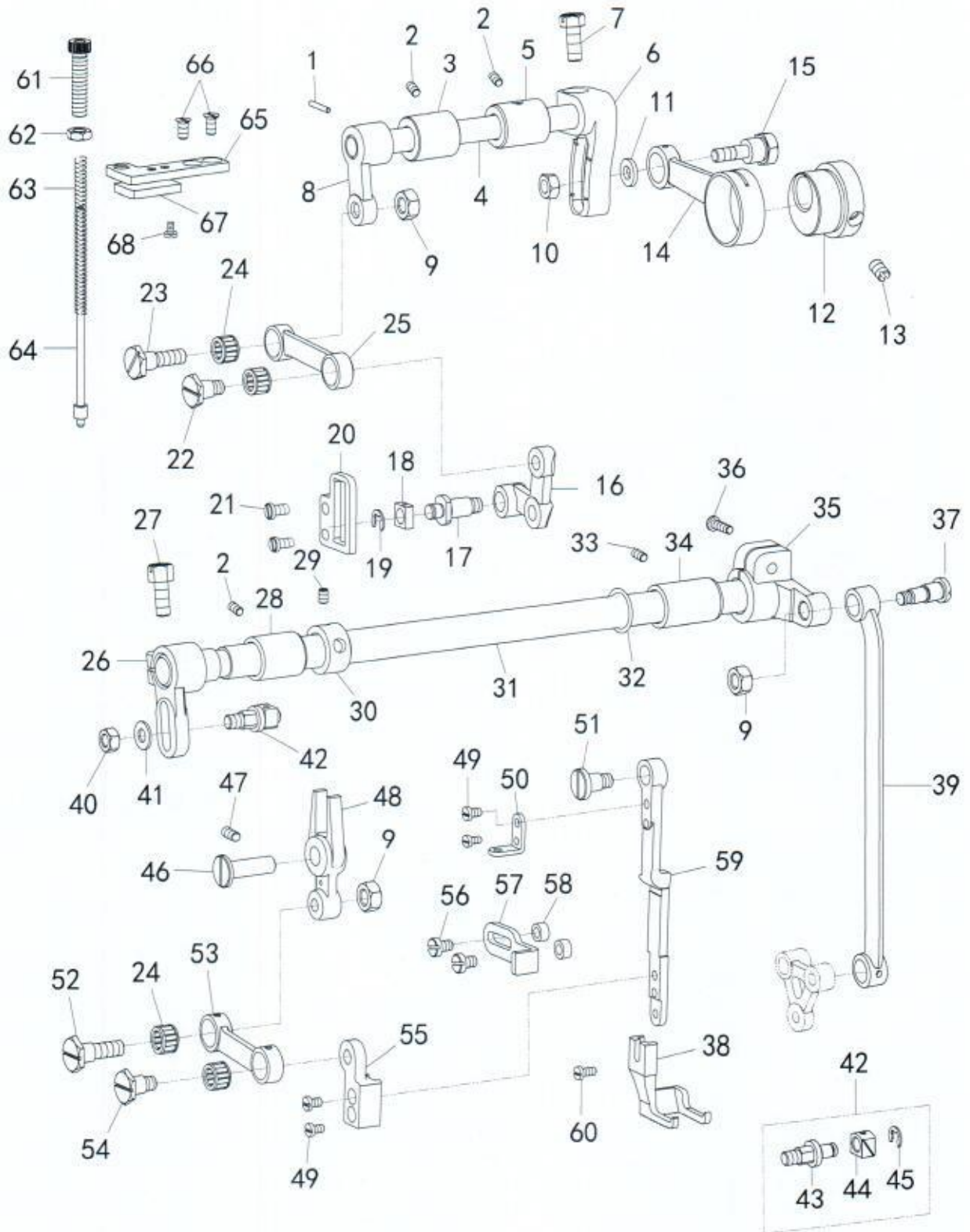
序号 No.	图号 Part No.	名称	DESCRIPTION	数量 QTY	备注 Remark
1	15225-001	调压螺丝	Adjusting screw	1	
2	15225-002	调压螺母	Nut	1	
3	15225-003	压簧	Spring, compression	1	
4	15225-004	压杆导架	Guide bracket	1	
5	15225-005	螺丝 1/4-40 L=8	Screw 1/4-40 L=8	1	
6	15225-006	螺丝 15/64-28 L=8	Screw 15/64-28 L=8	1	
7	15225-007	抬压扳手	Presser bar lifter	1	
8	15225-008	压脚扳手凸轮部件	Lifter crank	1	
9	15225-009	压杆	Presser bar	1	
10	15225-010	压杆下套	Bush	1	
11	15225-011	内压脚	Presser foot , inside	1	02#
12	15225-012	螺丝 3/16-28 L=8.5	Screw 3/16-28 L=8.5	2	
13	15225-013	螺丝 11/64-40 L=6.5	Screw 11/64-40 L=6.5	1	
14	15225-014	抬压脚拉杆	Collecting rod	1	
15	15225-015	后杠杆轴	Pin	1	
16	15225-016	抬压脚后杠杆	Lever	1	
17	15225-017	挡圈	Collar	1	
18	15225-018	螺丝 11/64-40 L=4	Screw 11/64-40 L=4	2	
19	15225-019	螺丝 9/64-40 L=7	Screw 9/64-40 L=7	2	
20	15225-020	抬压脚顶杆	Knee lifter bar	1	
21	15225-021	复位拉簧	Spring	1	
22	15225-022	拉簧销	Spring pin	1	
23	15225-023	膝控提升杠杆(左)	Lifter lever	1	
24	15225-024	松线凸轮	Guide plate	1	
25	15225-025	夹线松线杆	Tension release stud	1	
26	15225-026	段螺丝 15/64-28 L=7.5	Screw SM15/64-28 L=7.5	1	
27	15225-027	螺母 9/64-40 L=3	Nut 9/64-40 L=3	1	
28	15225-028	沙拉过线	Arm thread guide C	1	
29	15225-029	压杆导架	Guide bracket	1	02#
30	15225-030	活压脚部件	Presser foot asm.	1	
31	15225-031	压杆	Presser bar	1	
32	15225-032	螺丝 3/16-28 L=8	Screw 3/16-28 L=8	2	
33	15225-033	松线电磁铁组件	Loose wire electromagnet asm.	1	
33-1	15225-033-1	卡簧 E4	E4	1	
33-2	15225-033-2	垫片	Gaskets	2	
33-3	15225-033-3	螺母 M3	Nut 3	2	
34	15225-034	松线电磁铁安装板	Mounting Plate	1	
35	15225-035	螺丝 M4 L=5	M4 L=5	2	
36	15225-036	松线挡圈	Collar	1	

6. 多点摆针机构/3&4 points mechanism

序号 No.	图号 Part No.	名称	DESCRIPTION	数量 QTY	备注 Remark
1	15226-001	靠轮杆座	Rod seat.	1	
2	15226-002	螺丝 M6 L=12	Screw M6 L=12	2	
3	15226-003	段螺丝 3/16-32	Screw SM3/16-32	2	
4	15226-004	螺母 3/16-32	Nut SM3/16-32	2	
5	15226-005	靠轮杆	Bend the wheel.	1	
6	15226-006	活动连接杆	Connecting rod	1	
7	15226-007	摆针连杆	Feed dog fork	1	
8	15226-008	段螺丝 3/16-32	Screw SM3/16-32	1	
9	15226-009	滚珠轴承	Ball bearing	1	
10	15226-010	段螺丝 M4-0.75 L=6	Screw M4-0.75 L=6	1	
11	15226-011	段螺丝 3/16-28	Screw SM3/16-28	1	
12	15226-012	拉簧	Spring	1	
13	15226-013	滑块销	Screw 9/32-28	1	
14	15226-014	3点式摆针传动偏心轮	3 needle eccentric wheel	1	
15	15226-015	4点式摆针传动偏心轮	4 needle eccentric wheel	1	
16	15226-016	螺丝 M4 L=10	Screw M4 L=10	2	
17	15226-017	摆针传动连杆	Feed dog fork	1	
18	15226-018	3点摆针传动齿轮(上)	3 Bevel gear(upper)	1	
19	15226-019	4点摆针传动齿轮(上)	4 Bevel gear(upper)	1	
20	15226-020	3点摆针传动齿轮(下)	3 Bevel gear(down)	1	
21	15226-021	4点摆针传动齿轮(下)	4 Bevel gear(down)	1	

1...01# FOR 1522D, 1523D, 1524D; ... 02# FOR 2522D, 2523D, 2524D

7. 上送料机构/Feed mechanism For (2522D、2523D、2524D)



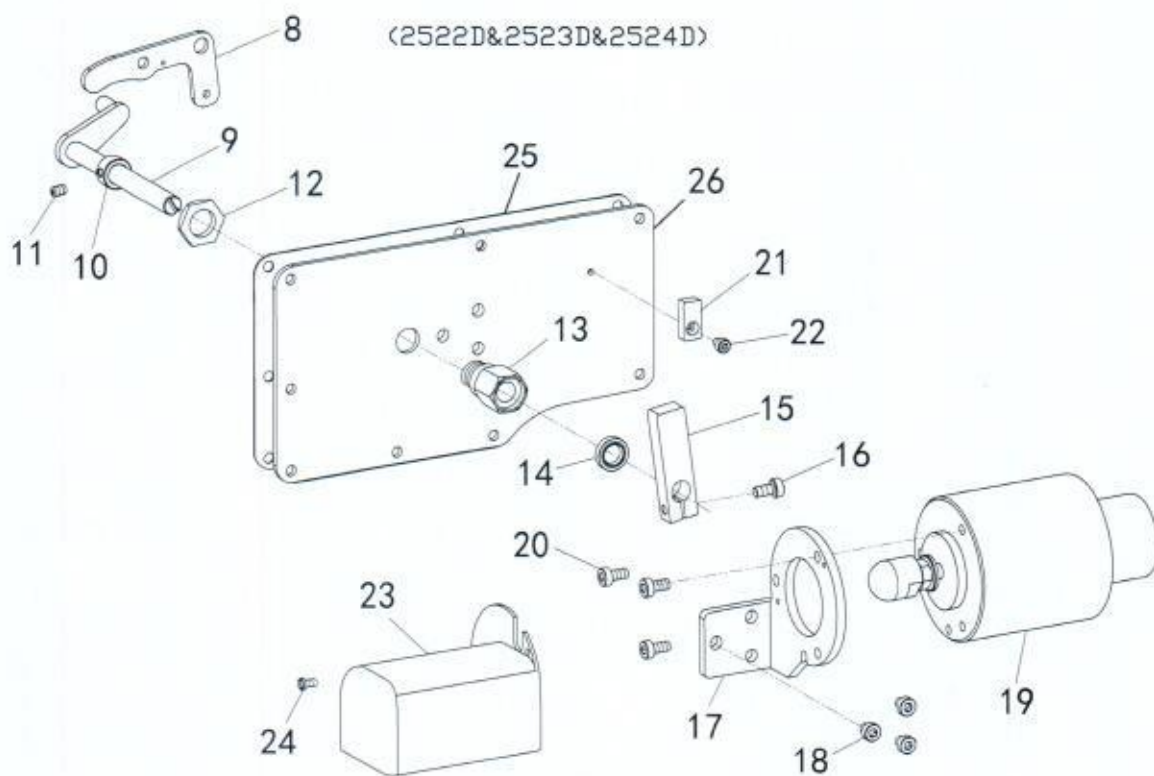
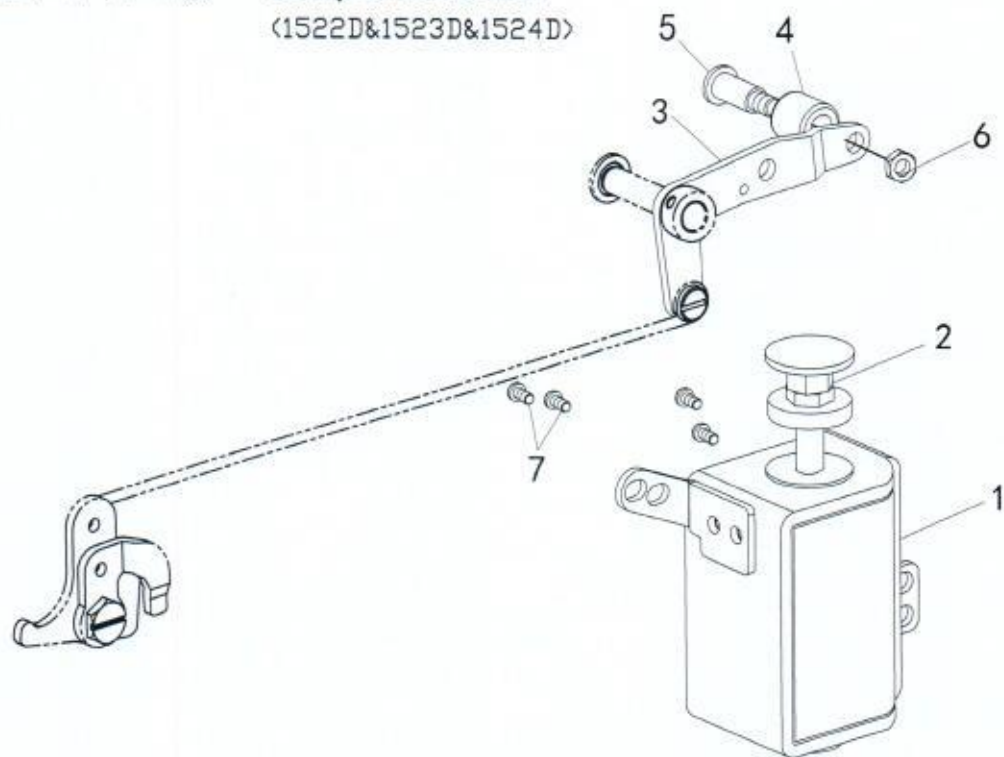
7. 上送料机构/Upper feed mechanism(FOR 2522D、2523D、2524D)

序号 No.	图号 Part No.	名称	DESCRIPTION	数量 QTY	备注 Remark
1	15227-001	圆锥销	Pin	1	02#
2	15227-002	螺丝 15/64-28 L=6	Screw 15/64-28 L=6	3	02#
3	15227-003	摆动提升轴套A	Bush, A	1	02#
4	15227-004	压脚升降轴	Feed lifting shaft	1	02#
5	15227-005	摆动提升轴套B	Bush, B	1	02#
6	15227-006	偏心轮连接调节曲柄	Feed arm	1	02#
7	15227-007	螺丝 1/4-24 L=16	Screw 1/4-24 L=16	1	02#
8	15227-008	压脚升降前曲柄	Feed lifting arm crank, L	1	02#
9	15227-009	螺母	Nut 1/4-40	3	02#
10	15227-010	螺母 M6-0.75	Nut M6-0.75	1	02#
11	15227-011	垫片W5*10*1	W5*10*1 Washer	1	02#
12	15227-012	偏心轮	Eccentric wheel	1	02#
13	15227-013	螺钉 1/4-40 L=7	Screw SM1/4-40 L=7	2	02#
14	15227-014	偏心轮连杆	Connecting rod	1	02#
15	15227-015	段螺丝	Screw	1	02#
16	15227-016	压脚送料曲柄	Feed lever	1	02#
17	15227-017	段螺丝	Screw	1	02#
18	15227-018	滑块	Slide block	1	02#
19	15227-019	卡簧 E5	E5	1	02#
20	15227-020	压杆提升导位板	Lever guide	1	02#
21	15227-021	螺丝 11/64-40 L=7	Screw 11/64-40 L=7	2	02#
22	15227-022	段螺丝 1/4-40	Screw SM1/4-40	1	02#
23	15227-023	段螺丝 1/4-41	Screw SM1/4-40	1	02#
24	15227-024	滚针轴承	Needle bearing	4	02#
25	15227-025	外压提升连杆	Link	1	02#
26	15227-026	外压摆动曲柄左	Crank	1	02#
27	15227-027	螺丝 1/4-24 L=16	Screw 1/4-24 L=16	1	02#
28	15227-028	压脚摆动轴左轴套	Bush, L	1	02#
29	15227-029	螺丝 1/4-40 L=5	Screw 1/4-40 L=5	2	02#
30	15227-030	挡圈	Collar	1	02#
31	15227-031	压脚摆动轴	Upper feed shaft	1	02#
32	15227-032	O型圈	O ring	1	02#
33	15227-033	螺丝 15/64-28 L=6	Screw 15/64-28 L=6	1	02#
34	15227-034	压脚摆动轴右轴套	Bush, M	1	02#
35	15227-035	压脚摆动右曲柄	Feed lifting arm crank, R	1	02#
36	15227-036	螺丝 15/64-28 L=15	Screw SM15/64-28 L=15	1	02#
37	15227-037	连杆螺丝	Screw 1/4-40	1	02#
38	15227-038	摆压脚	Walking foot	1	02#
39	15227-039	摆压脚大连杆	Connecting rod	1	02#
40	15227-040	螺母 M6-1	Nut M6-1	1	02#
41	15227-041	垫片W6.5	W6.5	1	02#
42	15227-042	摆压脚同步调节器组件	Roller shaft assy.	1	02#
43	15227-043	提升压脚变动曲柄轴	Pin	1	02#
44	15227-044	滑块	Slide block	1	02#
45	15227-045	卡簧 E5	E5 Snap ring	1	02#
46	15227-046	摆压脚叉形杆销	Pin	1	02#
47	15227-047	螺丝 M5 L=6	M5 L=6	1	02#
48	15227-048	摆压脚叉形杆	Crank	1	02#
49	15227-049	螺丝 9/64-40 L=7	Screw 9/64-40 L=7	4	02#
50	15227-050	摆压脚导柱板	Plart	1	02#
51	15227-051	段螺丝 1/4-40	Screw 1/4-40	1	02#
52	15227-052	摆压脚连杆	Link	1	02#
53	15227-053	摆压脚杆座	Clamper	1	02#
54	15227-054	螺丝 11/64-40 L=12	Screw SM11/64-40 L=12	2	02#
55	15227-055	压脚连杆压板	Block	1	02#
56	15227-056	摆压脚杆压板垫片	Collar	2	02#
57	15227-057	摆压脚杆	Connecting rod	1	02#
58	15227-058	摆压脚叉形杆	Lever	1	02#
59	15227-059	摆压脚调压螺丝	Screw	1	02#
60	15227-060	摆压脚调压螺母	Nut	1	02#
61	15227-061	摆压脚调压杆弹簧	Spring compression	1	02#
62	15227-062	调压杆弹簧导柱	Guide shaft	1	02#
63	15227-063	摆压脚调压螺钉架	Bracket	1	02#
64	15227-064	螺丝 11/64-40 L=7	Screw 11/64-40 L=7	2	02#
65	15227-065	羊毛毡	Wool felt	1	02#
66	15227-066	螺丝 9/64-40 L=5	Screw 9/64-40 L=5	1	02#

1...01# FOR 1522D, 1523D, 1524D;
2...02# FOR 2522D, 2523D, 2524D

8. 自动抬压脚机构/ components

(1522D&1523D&1524D)

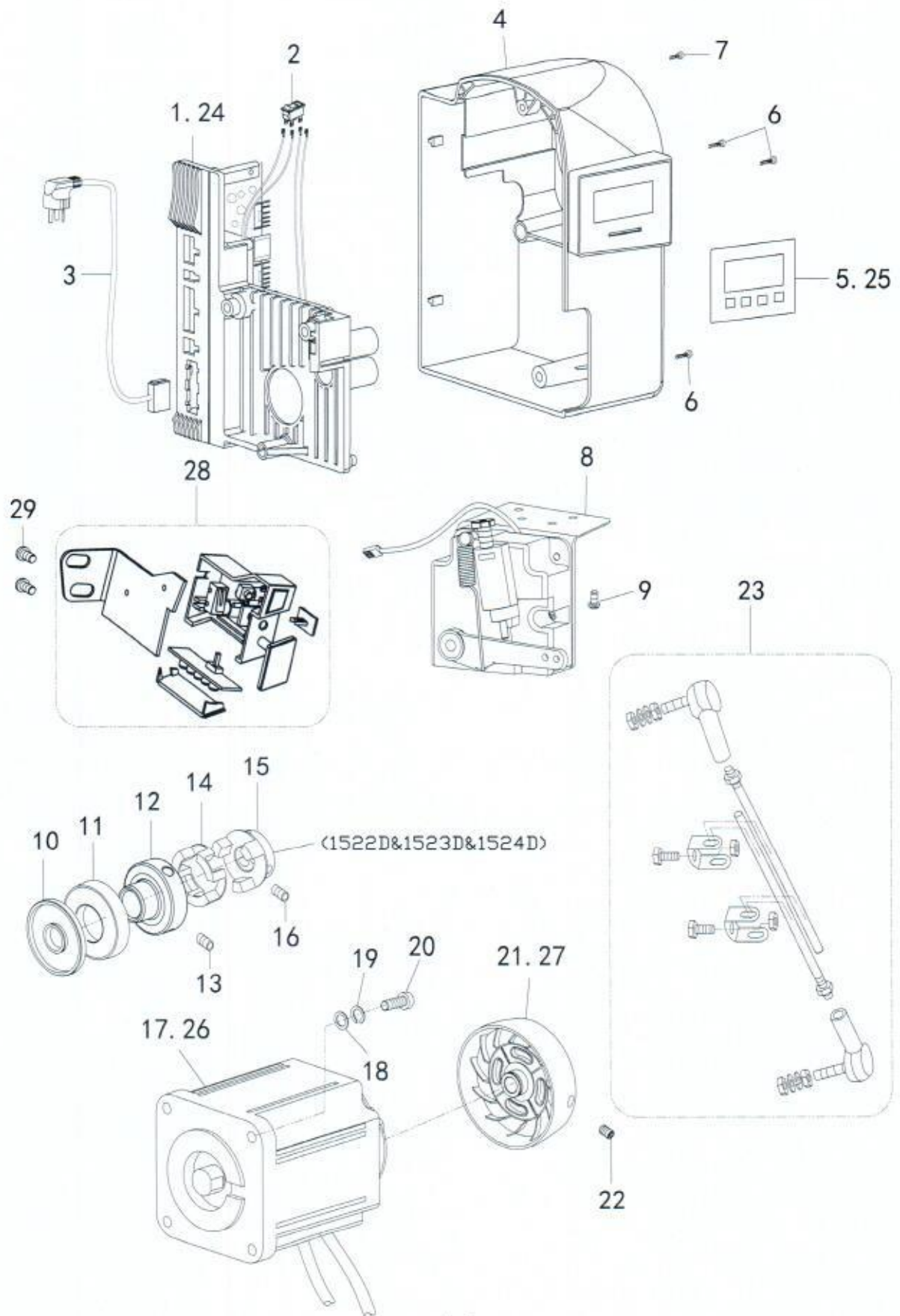


8. 自动抬压脚/Driver components

序号 No.	图号 Part No.	名称	DESCRIPTION	数量 QTY	备注 Remark
1	15228-001	抬压脚电磁铁	Electromagnet asm.	1	01#
2	15228-002	顶帽	Top head	1	01#
3	15228-003	膝控右杠杆	Lifting lever link	1	01#
4	15228-004	橡胶圈	Rubber ring	1	01#
5	15228-005	台阶螺丝	Screw 1/4-28	1	01#
6	15228-006	螺母 1/4-28	Nut 1/4-28	1	01#
7	15228-007	螺丝3/16-28 L=8	Screw 3/16-28 L=8	4	01#
8	15228-008	膝控右杠杆	Lifting lever link	1	02#
9	15228-009	摆杆	Pendulum	1	02#
10	15228-010	挡圈	Retaining rings	1	02#
11	15228-011	螺丝11/64-40 L=5	Screw 11/64-40 L=5	2	02#
12	15228-012	螺母M16X1.5	Nut M16X1.5	1	02#
13	15228-013	轴套	Sleeve	1	02#
14	15228-014	密封圈	Seal ring	1	02#
15	15228-015	曲柄	Crank	1	02#
16	15228-016	螺丝 M5 L=12	M5 L=12	1	02#
17	15228-017	电磁铁支架	Bracket	1	02#
18	15228-018	螺丝 M6 L=8	M6 L=8	3	02#
19	15228-019	抬压脚电磁铁	Electromagnets	1	02#
20	15228-020	螺丝 M6 L=8	M6 L=8	3	02#
21	15228-021	垫块	Pad block	1	02#
22	15228-022	螺丝 M4 L=5	M4 L=5	1	02#
23	15228-023	罩壳	Enclosure	1	02#
24	15228-024	螺丝 M3 L=5	M3 L=5	2	02#
25	15228-025	后窗板	Side plate	1	02#
26	15228-026	后窗板垫	Gasket	1	02#

1...01# FOR 1522D, 1523D, 1524D; ...02# FOR 2522D, 2523D, 2524D

9. 电控部件/Driver components

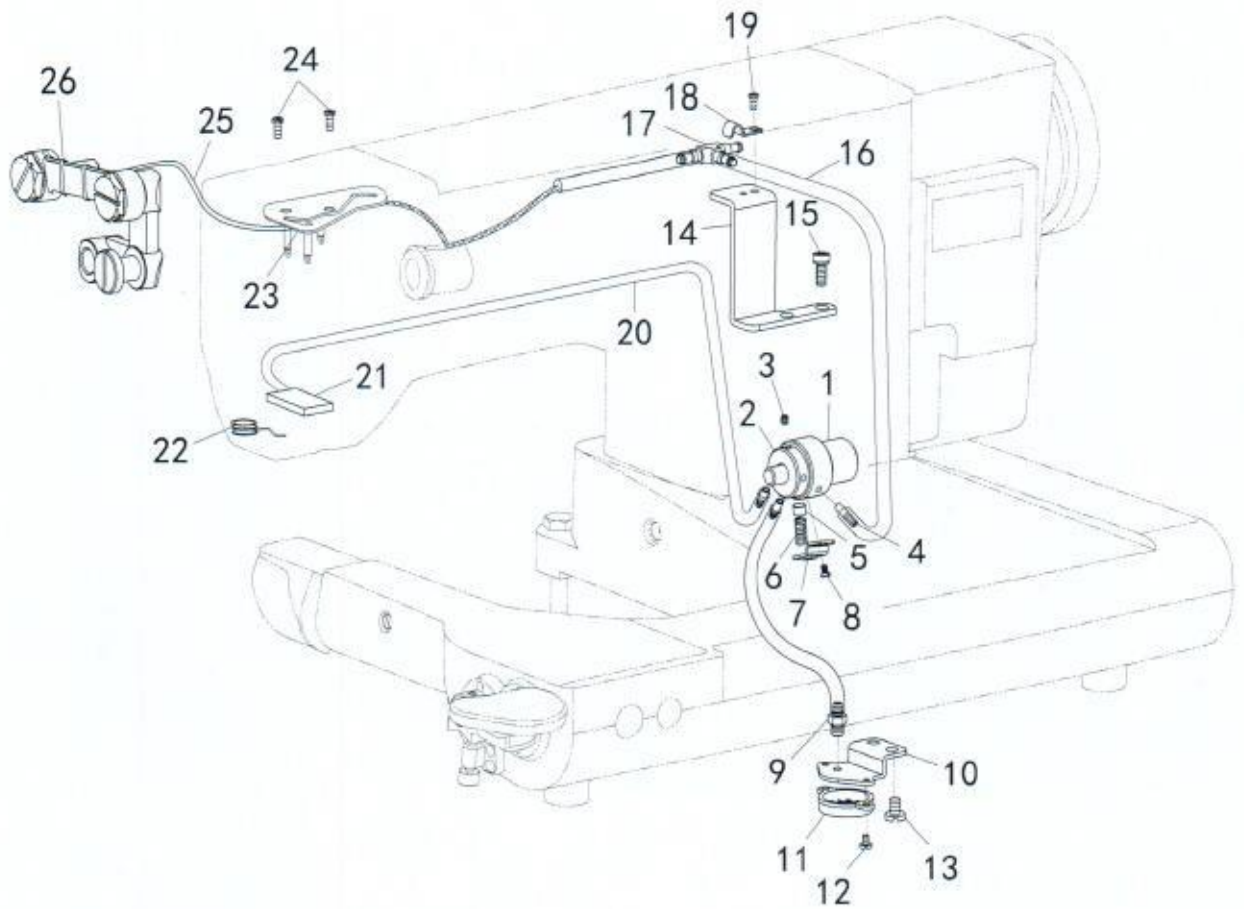


9. 电控部件/Driver components

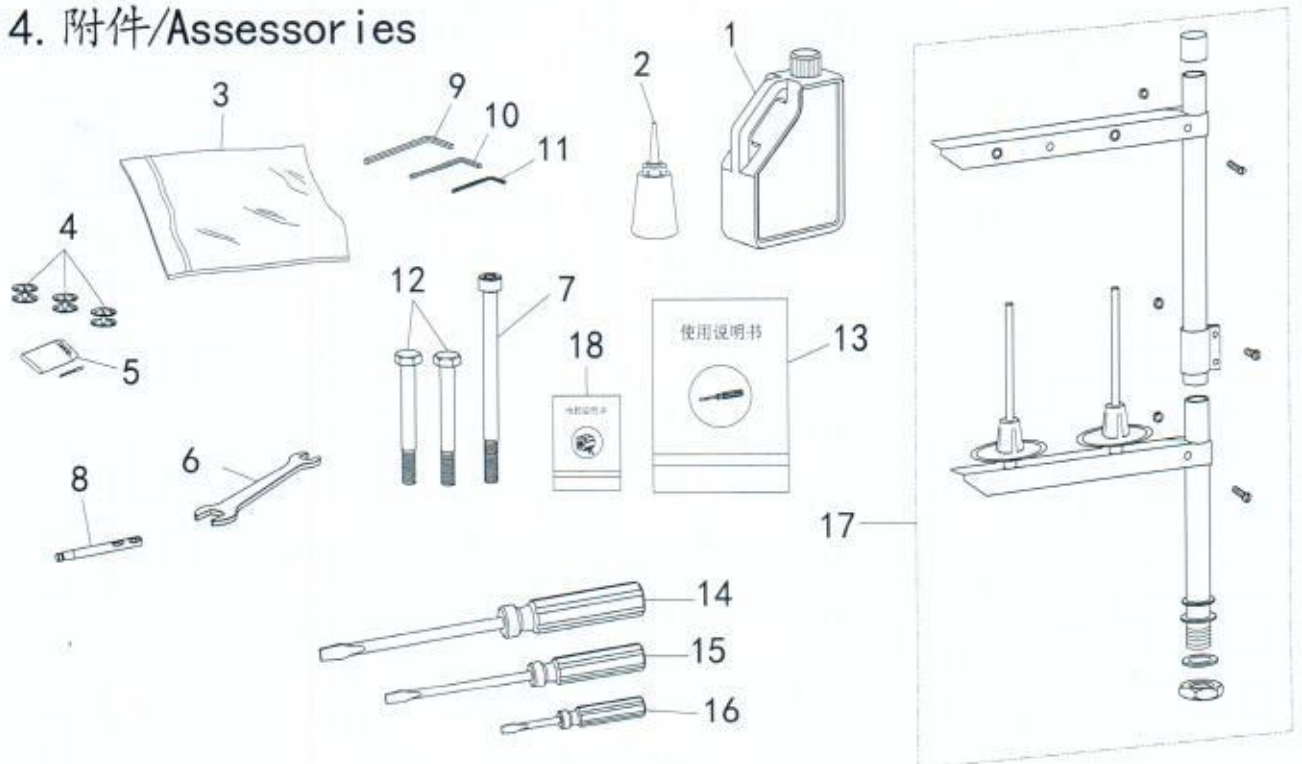
序号 No.	图号 Part No.	名称	DESCRIPTION	数量 QTY	备注 Remark
1	15229-001	电控组件	Control asm	1	01#
2	15229-002	电源开关	Power switch	1	
3	15229-003	电源线	Power line	1	
4	15229-004	电控罩	Control cover	1	
5	15229-005	操作面板	Face plate	1	01#
6	15229-006	螺丝M5 L=35	Screw M5 L=35	3	
7	15229-007	螺丝M5 L=20	Screw M5 L=20	2	
8	15229-008	脚踏控速器	Thread asm	1	
9	15229-009	螺钉	Screw	3	
10	15229-010	上轴油封	Oil seal	1	01#
11	15229-011	轴承	Ball bearing	1	01#
12	15229-012	连轴器A	Clutch component (A)	1	01#
13	15229-013	螺丝M6 L=6	Screw M6 L=6	3	01#
14	15229-014	连轴器橡胶垫	Alnico tray	1	01#
15	15229-015	连轴器B	Clutch component (B)	1	01#
16	15229-016	螺丝M6 L=6	Screw M6 L=6	3	01#
17	15229-017	AC伺服马达550W	AC servo motor 550W	1	01#
18	15229-018	垫片	Washer	4	
19	15229-019	弹性垫片	Spring washer	4	
20	15229-020	螺丝M5 L=20	Screw M5 L=20	4	
21	15229-021	手轮	Hand wheel	1	01#
22	15229-022	螺丝 15/64-28 L=10	Screw 15/64-28 L=10	2	
23	15229-023	拉杆组件	Live festival balllink asm	1	02#
24	15229-024	电控组件	Control asm	1	02#
25	15229-025	操作面板	Face plate	1	02#
26	15229-026	AC伺服马达750W	AC servo motor 750W	1	02#
27	15229-027	手轮	Hand wheel	1	02#
28	15229-028	灯组倒缝开关	Auto reverse feed switch asm	1	
29	15229-029	螺丝 3/16-28 L=9	Screw 3/16-28 L=9	2	

1...01# FOR 1522D, 1523D, 1524D; ...02# FOR 2522D, 2523D, 2524D

10. 供油机构/Oil lubrication mechanism



14. 附件/Assessories



10. 供油机构/Oil lubrication mechanism

序号 No.	图号 Part No.	名称	DESCRIPTION	数量 QTY	备注 Remark
1	1522A-001	柱塞泵轴套	Sleeve	1	
2	1522A-002	柱塞泵	Piston pump	1	
3	1522A-003	螺丝 11/64-40 L=6	Screw SM11/64-40 L=6	2	
4	1522A-004	油嘴	Oil tube	3	
5	1522A-005	柱塞	Plunger	1	
6	1522A-006	弹簧	Spring	1	
7	1522A-007	挡板	Holder plate	1	
8	1522A-008	螺丝 1/8-40 L=4.5	Screw 1/8-40 L=4.5	1	
9	1522A-009	吸油嘴	Oil tube	1	
10	1522A-010	油泵支架	Bracket	1	
11	1522A-011	过滤网	Filter cover	1	
12	1522A-012	螺丝 M4 L=5	M4 L=5	2	
13	1522A-013	螺丝 15/64-28 L=6	Screw SM15/64-28 L=6	2	
14	1522A-014	T形油管支架	Bracket	1	
15	1522A-015	螺丝 M6 L=10	M6 L=10	2	
16	1522A-016	供回油管	Oil supply pipes	1	
17	1522A-017	T形油管	T vitta	1	
18	1522A-018	压板	Platen	1	
19	1522A-019	螺丝 9/64-40 L=10	Screw 9/64-40 L=10	1	
20	1522A-020	回油管	Tube assy.	1	
21	1522A-021	羊毛毡	Wool felt	1	
22	1522A-022	羊毛毡压簧	Spring	1	
23	1522A-023	油泵体盖板组件	Setting plate	1	
24	1522A-024	螺丝 9/64-40 L=13	Screw 9/64-40 L=13	2	
25	1522A-025	油绳	Oil tip	2	
26	1522A-026	扎带	Tie	3	

11. 附件/Assessories

序号 No.	图号 Part No.	名称	DESCRIPTION	数量 QTY	备注 Remark
1	1522B-001	油壶	Oil tank	1	
2	1522B-002	注油壶	Oil pot	1	
3	1522B-003	机头罩	Accessory bag	1	
4	1522B-004	梭芯	Bobbin	3	
5	1522B-005	机针包 DPX17 18#	Needle	1	
6	1522B-006	扳手	Wrench	1	
7	1522B-007	螺栓M10 L=140	Bolt M10 L=140	1	
8	1522B-008	过线柱	Needle thread guide pin	1	
9	1522B-009	5MM六角扳手	Wrench, 5	1	
10	1522B-010	4MM六角扳手	Wrench, 4	1	
11	1522B-011	3MM六角扳手	Wrench, 3	1	
12	1522B-012	螺栓M10 L=90	Bolt M10 L=90	2	
13	1522B-013	说明书	Instruction	1	
14	1522B-014	大起子	Screw driver, L	1	
15	1522B-015	中起子	Screw driver, M	1	
16	1522B-016	小起子	Screw driver, S	1	
17	1522B-017	二线架组件	Thread stand assy.	1	
18	1522B-018	电控说明书	Electronic control instruction	1	
19	1522B-019	垫片	Washer	2	
20	1522B-020	螺母 M10	Nut M10	3	

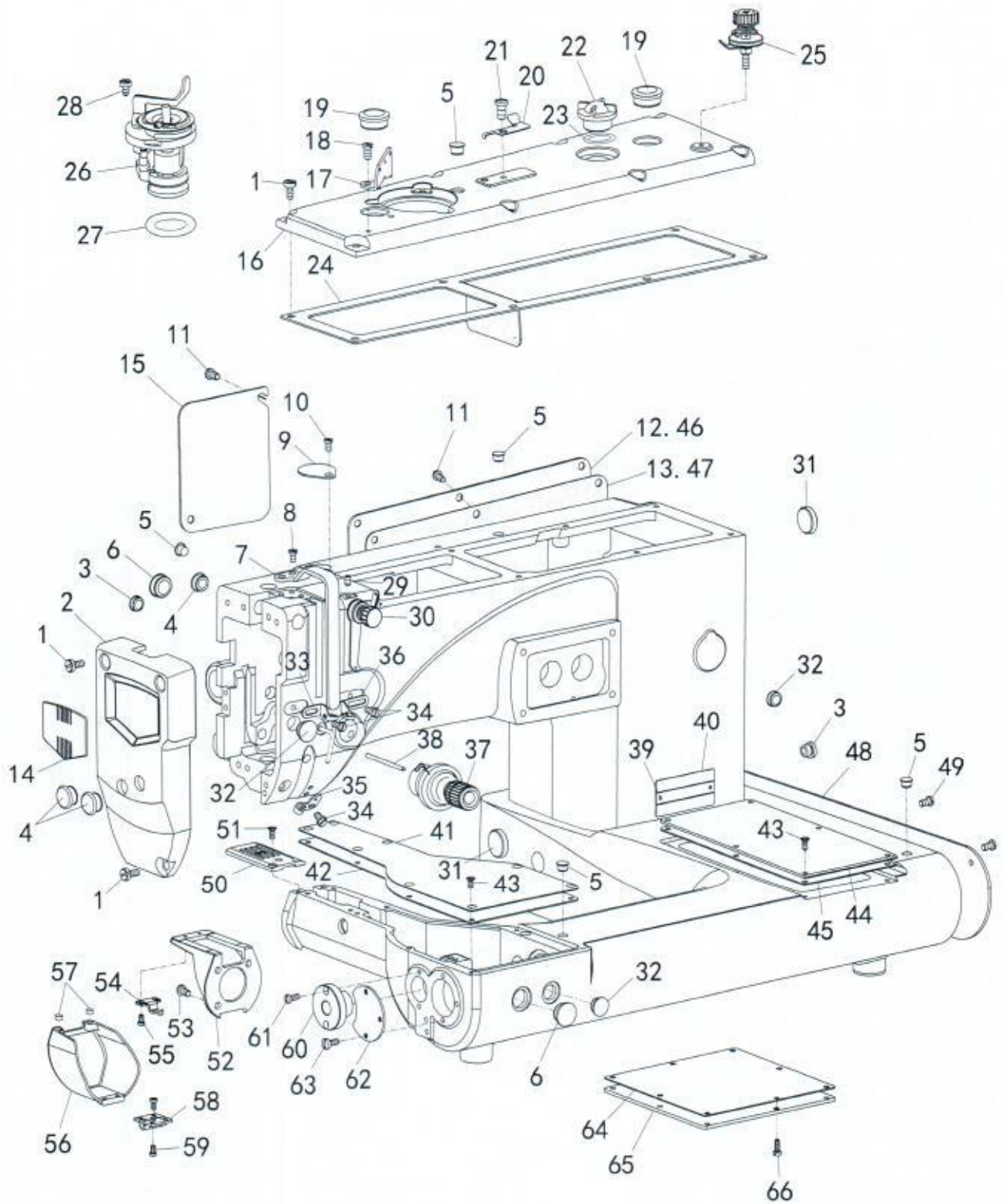


零件样本

Parts Catalog

1. 机壳分组件/Machine body	1-2
2. 上轴. 竖轴. 挑线机构/Upper shaft mechanism	3-4
3. 摆针机构/Lower shaft mechanism	5-6
4. 缝目调节. 下送布机构/Presser foot mechanism. Feed mechanism	7-8
5. 抬压脚机构/Presser foot mechanism	9-10
6. 多点摆针机构/3&4 points mechanism	9-10
7. 上送料机构/Feed mechanism For (2522D、2523D、2524D)	11-12
8. 自动抬压脚机构/ components	13-14
9. 电控部件/Driver components	15-16
10. 供油机构/Oil lubrication mechanism	17-18
11. 附件/Assessor ies	17-18

1. 机壳分组件/Machine body

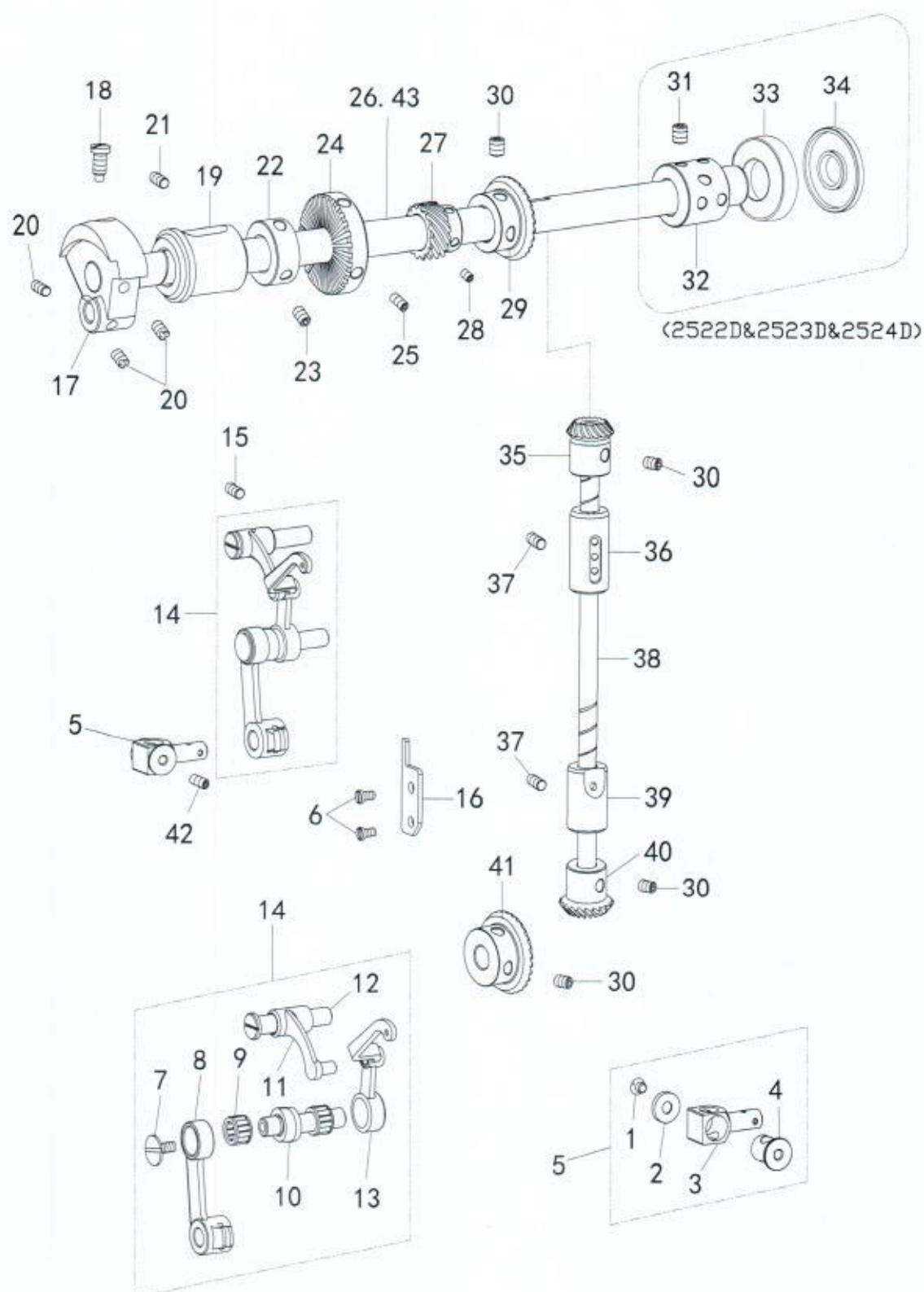


1. 机壳分组件/Machine body

序号 No.	图号 Part No.	名称	DESCRIPTION	数量 QTY	备注 Remark
1	15221-001	螺丝11/64-40 L=10	Screw 11/64-40 L=10	11	
2	15221-002	面板	Face plate	1	
3	15221-003	橡皮塞	Rubber plug Ø10.8x5	1	
4	15221-004	橡皮塞	Rubber plug Ø11.8x5	4	
5	15221-005	橡皮塞	Rubber plug Ø8.8x5	6	
6	15221-006	橡皮塞	Rubber plug Ø15.5x5	2	
7	15221-007	挑线杆防护罩	Thread take-up lever cover	1	
8	15221-008	螺丝11/64-40 L=8	Screw 11/64-40 L=8	2	
9	15221-009	挡板	Plate	1	
10	15221-010	螺丝11/64-40 L=5	Screw 11/64-40 L=5	1	
11	15221-011	螺丝3/16-28 L=9	Screw 3/16-28 L=9	10	
12	15221-012	后窗板	Side plate	1	
13	15221-013	后窗板垫	Gasket	1	
14	15221-014	面板贴	Face plate	1	
15	15221-015	侧板	Side plate	1	02#
16	15221-016	顶盖	Top cover	1	
17	15221-017	三孔线勾	Thread retainer	1	
18	15221-018	螺丝3/16-28 L=6	Screw 3/16-28 L=6	1	
19	15221-019	橡皮塞	Rubber plug Ø18.8x6	2	
20	15221-020	割线刀	Cutter	1	
21	15221-021	螺丝3/16-28 L=6	Screw 3/16-28 L=6	1	
22	15221-022	油窗	Oil sight window	1	
23	15221-023	油窗O型圈	Rubber ring	1	
24	15221-024	顶盖垫	Top cover packing	1	
25	15221-025	底线夹线器	Bobbin thread tension	1	
26	15221-026	绕线器	Bobbin winder	1	
27	15221-027	绕线器O型圈	Rubber ring	1	
28	15221-028	螺钉3/16-32 L=7	Screw 3/16-32 L=7	3	
29	15221-029	螺丝11/64-40 L=6	Screw 11/64-40 L=6	1	
30	15221-030	小夹线器组件	Thread guide assy	1	
31	15221-031	橡皮塞	Rubber plug Ø16.15x5	2	
32	15221-032	橡皮塞	Rubber plug Ø12.5	3	
33	15221-033	左线勾	Thread guide	1	
34	15221-034	螺丝9/64-40 L=7	Screw 9/64-40 L=7	3	
35	15221-035	上座下线勾	Thread guide	1	02#
36	15221-036	右线勾	Thread guide	1	
37	15221-037	夹线器组件	Thread tension bracket assy.	1	
38	15221-038	松线辅钉	Tension release pin	1	
39	15221-039	型号牌铆钉	Pole	2	
40	15221-040	型号牌	Model plate	1	
41	15221-041	曲臂盖板	Cover plate	1	
42	15221-042	曲臂盖板垫	Seal	1	
43	15221-043	螺丝M4 L=7	M4 L=7	14	
44	15221-044	右盖板	Cover plate	1	
45	15221-045	右盖板垫	Seal	1	
46	15221-046	后窗板	Side plate	1	02#
47	15221-047	后窗板垫	Gasket	1	02#
48	15221-048	侧盖板	Cover plate	1	
49	15221-049	螺丝 11/64-40 L=6	Model plate	3	
50	15221-050	针板	Needle plate	1	
51	15221-051	螺丝 11/64-40 L=8	Screw 11/64-40 L=8	2	
52	15221-052	针板支架	Holder	1	
53	15221-053	螺丝 11/64-40 L=8	Screw 11/64-40 L=8	3	
54	15221-054	定位勾	B/case holder position bracket	1	
55	15221-055	螺丝 9/64-40 L=6	Screw 11/64-40 L=6	2	
56	15221-056	旋梭罩	Cover piece	1	
57	15221-057	磁钢5*4	Magnetic steel	2	
58	15221-058	合页	Hinge	1	
59	15221-059	螺丝M3 L=5.5	M3 L=5.5	4	
60	15221-060	滑块槽套	Shaft sleeve	1	
61	15221-061	螺丝 9/64-40 L=8	Screw 9/64-40 L=8	2	
62	15221-062	轴承盖板	Side plate	1	
63	15221-063	螺丝 9/64-40 L=8	Screw 9/64-40 L=8	3	
64	15221-064	底盖板垫	Side plate	1	
65	15221-065	底盖板	Throat plate	1	
66	15221-066	螺丝 11/64-40 L=10	Screw 11/64-40 L=10	6	

... 02# FOR 2522D, 2523D, 2524D

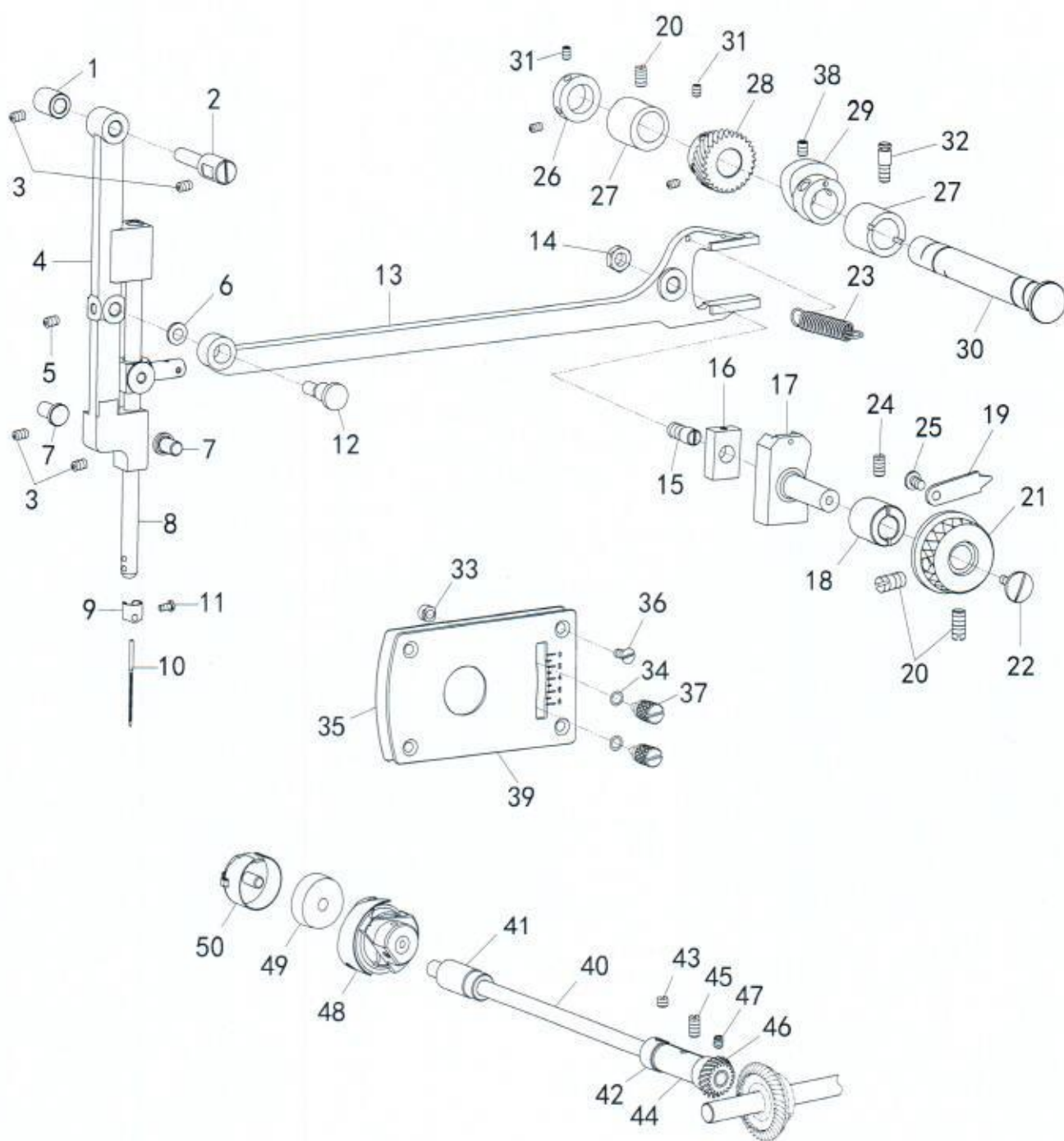
2. 上轴. 竖轴. 挑线机构/Upper shaft mechanism



2. 上轴. 竖轴. 挑线机构/Upper shaft mechanism

序号 No.	图号 Part No.	名称	DESCRIPTION	数量 QTY	备注 Remark
1	15222-001	螺丝 11/64-40 L=3.5	Screw 11/64-40 L=3.5	1	
2	15222-002	垫片	Washer	1	
3	15222-003	针杆接头	Needle bar clamp	1	
4	15222-004	针杆接头销	Bush	1	
5	15222-005	针杆接头组件	Needle bar clamp assy	1	
6	15222-006	螺丝 11/64-40 L=6	Screw 11/64-40 L=6	2	
7	15222-007	L螺丝 9/64-40 L=4.8	End screw left 9/64-40 L=4.8	1	
8	15222-008	针杆连杆	Needle bar crank rod	1	
9	15222-009	滚针轴承	Needle bearing	1	
10	15222-010	挑线曲柄	Needle bar crank	1	
11	15222-011	挑线连杆	Thread take-up bar	1	
12	15222-012	挑线连杆销	Thread take-up crank shaft.	1	
13	15222-013	挑线连杆分组件	Thread take-up lever	1	
14	15222-014	挑线杆组件	Thread take-up lever ASM	1	
15	15222-015	螺丝15/64-28 L=13	Screw 15/64-28 L=13	1	
16	15222-016	针杆连杆导位块	Needle bar link guide	1	
17	15222-017	针杆曲柄	Thread take-up crank	1	
18	15222-018	螺丝9/32x28	Screw SM9/32x28	1	
19	15222-019	上轴前套	Upper shaft bush (front)	1	
20	15222-020	螺丝1/4-40 L=7	Screw 1/4-40 L=7	3	
21	15222-021	螺丝15/64-28 L=13	Screw 15/64-28 L=13	1	
22	15222-022	上轴挡圈	Collar	1	
23	15222-023	螺丝1/4-40 L=8	Screw 1/4-40 L=8	2	
24	15222-024	绕线摩擦轮	Friction wheel	1	
25	15222-025	螺丝11/64-40 L=6	Screw 11/64-40 L=6	2	
26	15222-026	上轴	Upper shat	1	
27	15222-027	摆针传动齿轮(上)	Bevel gear (upper)	1	
28	15222-028	螺丝11/64-40 L=4	Screw 11/64-40 L=4	2	
29	15222-029	上轴齿轮 Z=3	Upper shaft bevel gear	1	
30	15222-030	螺丝1/4-40 L=6	Screw 1/4-40 L=6	8	
31	15222-031	螺丝M6 L=6	M6 L=6	4	
32	15222-032	连轴器	Coupling	1	
33	15222-033	轴承	Bearing	1	
34	15222-034	密封圈	Seal ring	1	
35	15222-035	竖轴上齿轮 Z=22	Vertical shaft bevel gear (upper)	2	
36	15222-036	竖轴上套	vertical shaft bush (upper)	1	
37	15222-037	螺丝15/64-28 L=6	Screw 15/64-28 L=6	2	
38	15222-038	竖轴	vertical shaft	2	
39	15222-039	竖轴下套	vertical shaft bush (lower)	1	
40	15222-040	竖轴下齿轮 Z=28	Vertical shaft bevel gear (lower)	1	
41	15222-041	下轴右齿轮 Z=21	Lower shaft bevel gear	1	
42	15222-042	螺丝11/64-40 L=6	Set Screw 11/64-40 L=6	1	
43	15222-043	上轴	Upper shat	1	

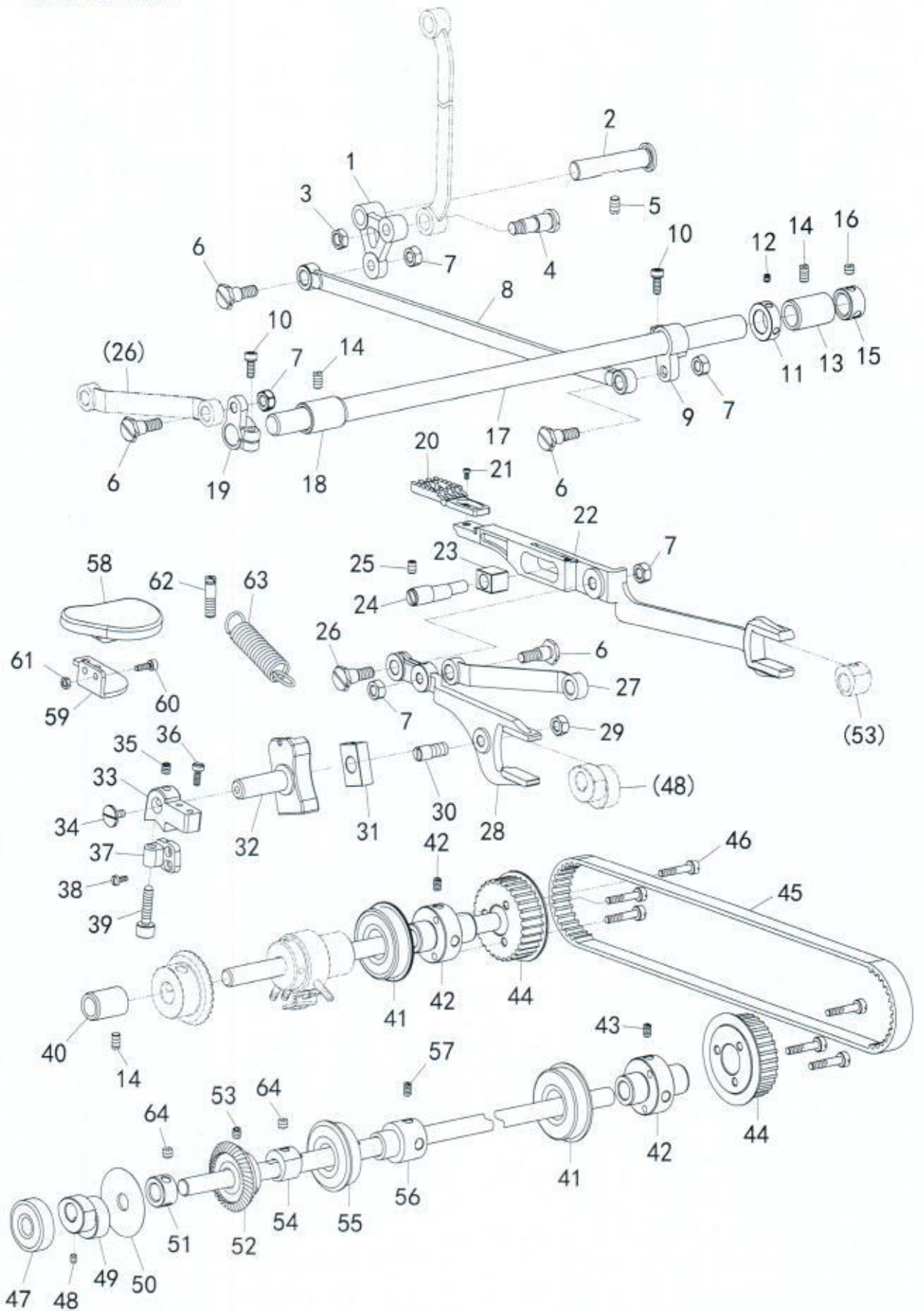
3. 摆针机构/Lower shaft mechanism



3. 摆针机构、梭轴机构/Lower shaft mechanism、Hook

序号 No.	图号 Part No.	名称	DESCRIPTION	数量 QTY	备注 Remark
1	15223-001	摆针架悬吊轴套	Needle bar frame pin bush	1	
2	15223-002	摆针架悬吊轴	Needle bar frame pin	1	
3	15223-003	螺丝11/64-40 L=6	Screw 11/64-40 L=6	1	
4	15223-004	摆针架	Needle bar frame	1	
5	15223-005	螺丝11/64-40 L=6	Screw 11/64-40 L=6	1	
6	15223-006	垫片W5*10*1 Washer	W5*10*1 Washer	1	
7	15223-007	摆针架下挡套	Needle bar frame position	1	
8	15223-008	针杆	Needle bar	1	
9	15223-009	针杆过线环	Needle bar thread guide	1	
10	15223-010	机针	Needle	1	
11	15223-011	螺丝 1/8-44 L=4.5	1/8-44 L=4.5	1	
12	15223-012	偏心销	Pin	1	
13	15223-013	摆针传动二又	Feed dog fork	1	
14	15223-014	螺母 9/32-28 L=4	Nut 9/32-28 L=4	1	
15	15223-015	传动二又滑块轴	Screw 9/32-28	1	
16	15223-016	传动二又滑块	Slide block	1	
17	15223-017	传动二又滑块座	Regulator	1	
18	15223-018	传动二又滑块座套	Regulator bush	1	
19	15223-019	摆幅指针	Indicalor	1	
20	15223-020	螺丝15/64-28 L=10	Screw 15/64-28 L=10	1	
21	15223-021	摆幅手转轮	Dial	1	
22	15223-022	螺丝3/16-28 L=8	Screw 11/64-40 L=8	1	
23	15223-023	摆针传动二又拉簧	Spring holder	1	
24	15223-024	螺丝15/64-28 L=11	Screw 15/64-28 L=11	1	
25	15223-025	螺丝11/64-40 L=7	Screw 11/64-40 L=7	1	
26	15223-026	摆针传动轴挡圈	Collar	1	
27	15223-027	摆针传动轴套	Bush	2	
28	15223-028	摆针传动齿轮(下)	Bevel gear(down)	1	
29	15223-029	摆针传动偏心轮	Cam	1	
30	15223-030	摆针传动轴	Shaft	1	
31	15223-031	螺丝11/64-40 L=4	Screw 11/64-40 L=4	4	
32	15223-032	挂簧螺丝15/64-28	15/64-28	1	
33	15223-033	螺母11/64-40 L=3.5	11/64-40 L=3.5	2	
34	15223-034	O型圈 Rubber ring	Rubber ring	2	
35	15223-035	板垫	Gasket	1	
36	15223-036	螺丝11/64-40 L=7	Screw 11/64-40 L=7	4	
37	15223-037	压花螺丝11/64-40	11/64-40	2	
38	15223-038	螺丝 15/64-28 L=7	Screw 15/64-28 L=7	2	
39	15223-039	摆幅指示板	Graduated plate	1	
40	15223-040	梭轴	Hook shaft	1	
41	15223-041	下轴左套	Front bushing	1	
42	15223-042	下轴挡圈	Lower shaft collar	1	
43	15223-043	螺丝15/64-28 L=5	Screw 15/64-28 L=5	2	
44	15223-044	下轴右套	Rear bushing	1	
45	15223-045	螺丝15/64-28 L=10	Screw 15/64-28 L=10	1	
46	15223-046	下轴齿轮	Gear of hook driving shaft	1	
47	15223-047	螺丝 1/4-40 L=6	Screw 1/4-40 L=6	2	
48	15223-048	梭梭	Hook ASM.	1	
49	15223-049	梭芯	Bobbin	1	
50	15223-050	梭壳	Bobbin case ASM.	1	

4. 缝目调节. 下送布机构/Presser foot mechanism. Feed mechanism



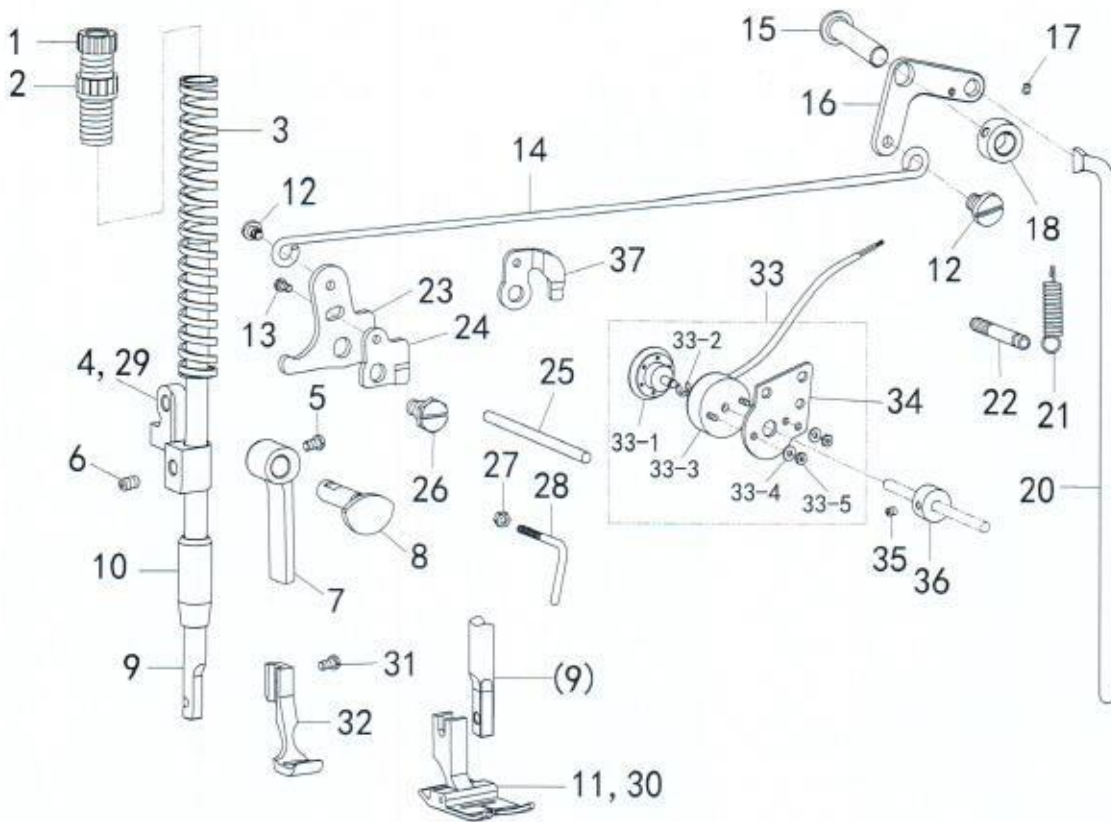
4. 缝目调节机构/Stitch width regulator mechanism

下送布机构/Feed mechanism

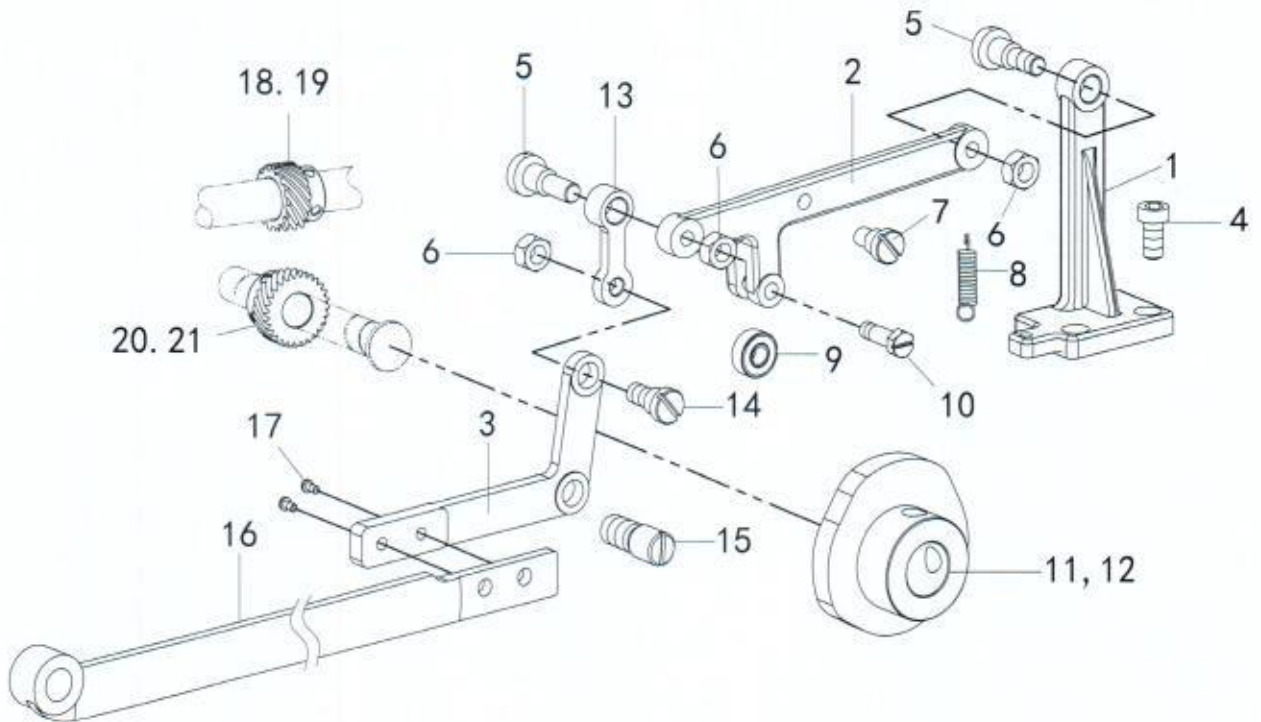
序号 No.	图号 Part No.	名称	DESCRIPTION	2	备注 Remark
1	15224-001	三角架	Tripod	1	02#
2	15224-002	销	Pin	1	02#
3	15224-003	螺母9/32-28	Nut 9/32-28	1	02#
4	15224-004	针距连杆	Feed connecting link	1	02#
5	15224-005	螺丝15/64-28 L=13	Screw 15/64-28 L=13	1	02#
6	15224-006	轴位螺丝1/4-40 D=7.94	Screw 1/4-40 D=7.94	4	02#
7	15224-007	螺母 1/4-40	Nut 1/4-40	5	02#
8	15224-008	长连杆	Connecting rod	1	02#
9	15224-009	转换右曲柄	Crank	1	02#
10	15224-010	螺丝M5 L=12	M5 L=12	2	02#
11	15224-011	挡圈	Retaining rings	1	02#
12	15224-012	螺丝 11/64-40 L=4	Screw 11/64-40 L=4	2	02#
13	15224-013	转换轴右套	Right shaft sleeve	1	02#
14	15224-014	螺丝15/64-28 L=13	Screw 15/64-28 L=13	3	02#
15	15224-015	挡圈	Retaining rings	1	02#
16	15224-016	螺丝1/4-40 L=4	Screw 1/4-40 L=4	2	02#
17	15224-017	转换轴	Conversion axis	1	02#
18	15224-018	转换轴左套	Left shaft sleeve	1	02#
19	15224-019	左曲柄	Left crank	1	02#
20	15224-020	送布牙	Feed dog	1	
21	15224-021	螺丝9/64-40 L=6	Screw 9/64-40 L=6	2	
22	15224-022	送料台	Feeding table	1	
23	15224-023	滑块	Slider	1	
24	15224-024	偏心销	Eccentric pins	1	
25	15224-025	螺丝 11/64-40 L=6	Screw 11/64-40 L=6	1	
26	15224-026	轴位长螺丝1/4-40 D=7.94	Screw 1/4-40 D=7.94	1	02#
27	15224-027	送布同步连杆	Feed synchronous linkage	1	
28	15224-028	送布连杆	Feed the connecting rod	1	
29	15224-029	螺母 9/32-28 L=4	Nut 9/32-28	1	
30	15224-030	传动二叉滑块轴	Scscrew 9/32-28	1	
31	15224-031	滑块	Slider	1	
32	15224-032	倒缝滑块槽	Inverted seam slider groove	1	
33	15224-033	针距调节摆杆	Feed regulator	1	
34	15224-034	螺丝 3/16-28 L=8	Screw 3/16-28 L=8	1	
35	15224-035	螺丝 15/64-28 L=6	Screw 15/64-28 L=8	2	
36	15224-036	螺丝 11/64-28 L=10	Screw 11/64-40 L=10	2	
37	15224-037	针距调节螺杆座	Pitch adjustment screw holder	1	
38	15224-038	螺丝 9/64-28 L=8	Screw 9/64-40 L=8	2	
39	15224-039	针距调节螺杆	Gauge adjustment screw	1	
40	15224-040	同步带转换轴左轴套	Left shaft sleeve	1	
41	15224-041	轴承	Bearing	2	
42	15224-042	轴承衬套	Bearing bushings	2	
43	15224-043	螺丝 15/64-28 L=8	Screw 15/64-28 L=8	4	
44	15224-044	同步带轮	Timing pulley	2	
45	15224-045	同步带	Timing belt	1	
46	15224-046	螺丝 M4 L=21	M4 L=21	6	
47	15224-047	轴承	Bearing	1	
48	15224-048	螺丝 15/64-28 L=6	Screw 11/64-40 L=6	1	
49	15224-049	送布凸轮	Cloth feed cam	1	
50	15224-050	二叉挡板	Baffle	1	
51	15224-051	挡圈	Retaining rings	1	
52	15224-052	大齿轮	Cogs	1	
53	15224-053	螺丝 M6X0.75 L=6	M6X0.75 L=6	3	
54	15224-054	拍牙凸轮	Tooth lifting cam	1	
55	15224-055	轴承	Bearing	1	
56	15224-056	轴承衬套	Bearing bushings	1	
57	15224-057	螺丝 1/4-40 L=6	Screw 1/4-40 L=6	2	
58	15224-058	倒缝把手	Inverted seam handle	1	
59	15224-059	把手支架	Bracket	1	
60	15224-060	螺丝 M4 L=12	M4 L=12	2	
61	15224-061	螺母 M4	Nut M4	2	
62	15224-062	复位簧销	Pin	1	
63	15224-063	复位簧	Reset spring	1	
64	15224-064	螺丝15/64-28 L=4.5	Screw 15/64-28 L=4.5	3	

... 02# FOR 2522D, 2523D, 2524D

5. 抬压脚机构/Presser foot mechanism



6. 多点摆针机构/3&4 points mechanism



5. 抬压脚机构/Presser foot mechanism

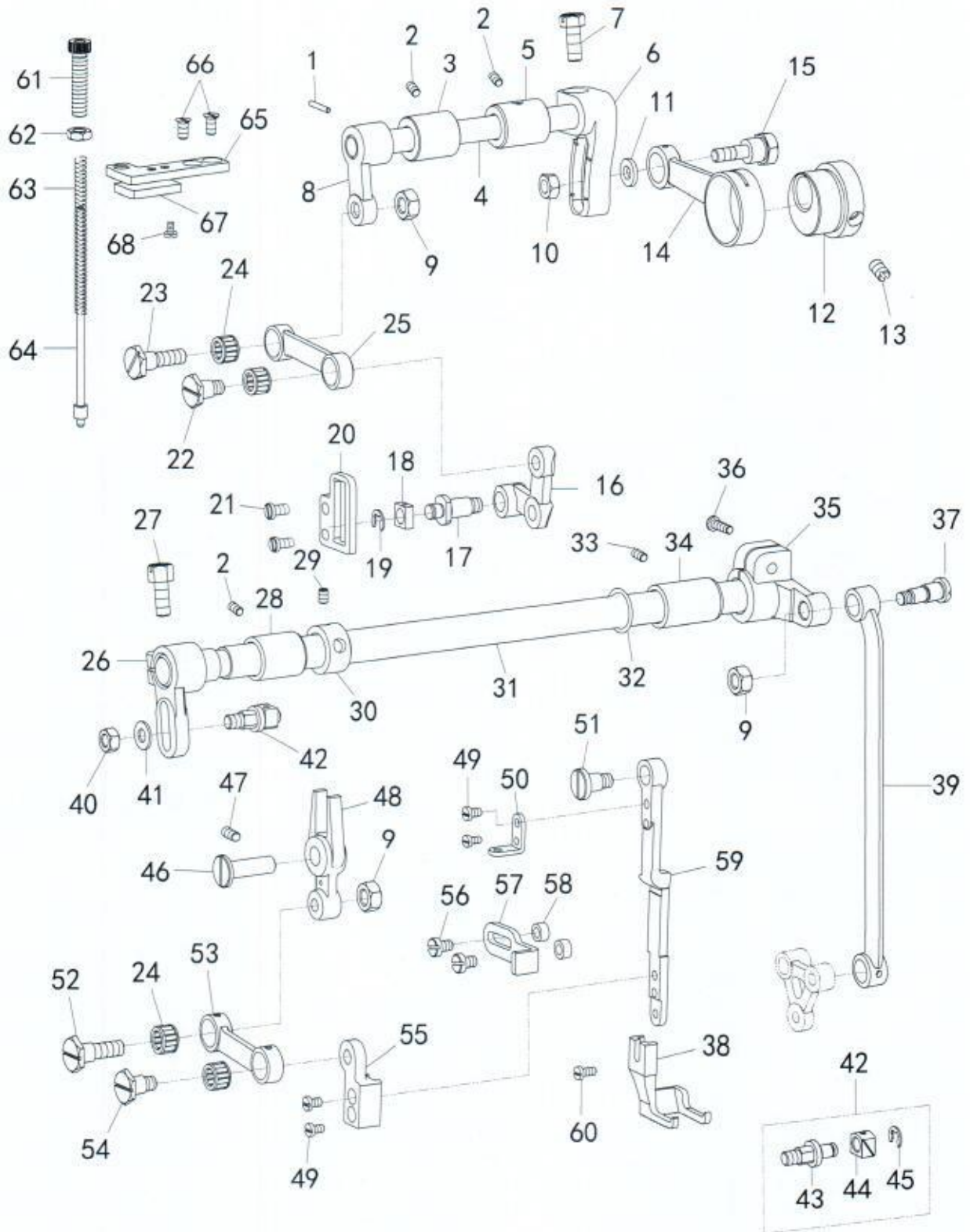
序号 No.	图号 Part No.	名称	DESCRIPTION	数量 QTY	备注 Remark
1	15225-001	调压螺丝	Adjusting screw	1	
2	15225-002	调压螺母	Nut	1	
3	15225-003	压簧	Spring, compression	1	
4	15225-004	压杆导架	Guide bracket	1	
5	15225-005	螺丝 1/4-40 L=8	Screw 1/4-40 L=8	1	
6	15225-006	螺丝 15/64-28 L=8	Screw 15/64-28 L=8	1	
7	15225-007	抬压扳手	Presser bar lifter	1	
8	15225-008	压脚扳手凸轮部件	Lifter crank	1	
9	15225-009	压杆	Presser bar	1	
10	15225-010	压杆下套	Bush	1	
11	15225-011	内压脚	Presser foot ,inside	1	02#
12	15225-012	螺丝 3/16-28 L=8.5	Screw 3/16-28 L=8.5	2	
13	15225-013	螺丝 11/64-40 L=6.5	Screw 11/64-40 L=6.5	1	
14	15225-014	抬压脚拉杆	Collecting rod	1	
15	15225-015	后杠杆轴	Pin	1	
16	15225-016	抬压脚后杠杆	Lever	1	
17	15225-017	挡圈	Collar	1	
18	15225-018	螺丝 11/64-40 L=4	Screw 11/64-40 L=4	2	
19	15225-019	螺丝 9/64-40 L=7	Screw 9/64-40 L=7	2	
20	15225-020	抬压脚顶杆	Knee lifter bar	1	
21	15225-021	复位拉簧	Spring	1	
22	15225-022	拉簧销	Spring pin	1	
23	15225-023	膝控提升杠杆(左)	Lifter lever	1	
24	15225-024	松线凸轮	Guide plate	1	
25	15225-025	夹线松线杆	Tension release stud	1	
26	15225-026	段螺丝 15/64-28 L=7.5	Screw SM15/64-28 L=7.5	1	
27	15225-027	螺母 9/64-40 L=3	Nut 9/64-40 L=3	1	
28	15225-028	沙拉过线	Arm thread guide C	1	
29	15225-029	压杆导架	Guide bracket	1	02#
30	15225-030	活压脚部件	Presser foot asm.	1	
31	15225-031	压杆	Presser bar	1	
32	15225-032	螺丝 3/16-28 L=8	Screw 3/16-28 L=8	2	
33	15225-033	松线电磁铁组件	Loose wire electromagnet asm.	1	
33-1	15225-033-1	卡簧 E4	E4	1	
33-2	15225-033-2	垫片	Gaskets	2	
33-3	15225-033-3	螺母 M3	Nut 3	2	
34	15225-034	松线电磁铁安装板	Mounting Plate	1	
35	15225-035	螺丝 M4 L=5	M4 L=5	2	
36	15225-036	松线挡圈	Collar	1	

6. 多点摆针机构/3&4 points mechanism

序号 No.	图号 Part No.	名称	DESCRIPTION	数量 QTY	备注 Remark
1	15226-001	靠轮杆座	Rod seat.	1	
2	15226-002	螺丝 M6 L=12	Screw M6 L=12	2	
3	15226-003	段螺丝 3/16-32	Screw SM3/16-32	2	
4	15226-004	螺母 3/16-32	Nut SM3/16-32	2	
5	15226-005	靠轮杆	Bend the wheel.	1	
6	15226-006	活动连接杆	Connecting rod	1	
7	15226-007	摆针连杆	Feed dog fork	1	
8	15226-008	段螺丝 3/16-32	Screw SM3/16-32	1	
9	15226-009	滚珠轴承	Ball bearing	1	
10	15226-010	段螺丝 M4-0.75 L=6	Screw M4-0.75 L=6	1	
11	15226-011	段螺丝 3/16-28	Screw SM3/16-28	1	
12	15226-012	拉簧	Spring	1	
13	15226-013	滑块销	Screw 9/32-28	1	
14	15226-014	3点式摆针传动偏心轮	3 needle eccentric wheel	1	
15	15226-015	4点式摆针传动偏心轮	4 needle eccentric wheel	1	
16	15226-016	螺丝 M4 L=10	Screw M4 L=10	2	
17	15226-017	摆针传动连杆	Feed dog fork	1	
18	15226-018	3点摆针传动齿轮(上)	3 Bevel gear(upper)	1	
19	15226-019	4点摆针传动齿轮(上)	4 Bevel gear(upper)	1	
20	15226-020	3点摆针传动齿轮(下)	3 Bevel gear(down)	1	
21	15226-021	4点摆针传动齿轮(下)	4 Bevel gear(down)	1	

1...01# FOR 1522D, 1523D, 1524D; ... 02# FOR 2522D, 2523D, 2524D

7. 上送料机构/Feed mechanism For (2522D、2523D、2524D)



7. 上送料机构/Upper feed mechanism(FOR 2522D、2523D、2524D)

序号 No.	图号 Part No.	名称	DESCRIPTION	数量 QTY	备注 Remark
1	15227-001	圆锥销	Pin	1	02#
2	15227-002	螺丝 15/64-28 L=6	Screw 15/64-28 L=6	3	02#
3	15227-003	摆动提升轴套A	Bush, A	1	02#
4	15227-004	压脚升降轴	Feed lifting shaft	1	02#
5	15227-005	摆动提升轴套B	Bush, B	1	02#
6	15227-006	偏心轮连接调节曲柄	Feed arm	1	02#
7	15227-007	螺丝 1/4-24 L=16	Screw 1/4-24 L=16	1	02#
8	15227-008	压脚升降前曲柄	Feed lifting arm crank, L	1	02#
9	15227-009	螺母	Nut 1/4-40	3	02#
10	15227-010	螺母 M6-0.75	Nut M6-0.75	1	02#
11	15227-011	垫片W5*10*1	W5*10*1 Washer	1	02#
12	15227-012	偏心轮	Eccentric wheel	1	02#
13	15227-013	螺钉 1/4-40 L=7	Screw SM1/4-40 L=7	2	02#
14	15227-014	偏心轮连杆	Connecting rod	1	02#
15	15227-015	段螺丝	Screw	1	02#
16	15227-016	压脚送料曲柄	Feed lever	1	02#
17	15227-017	段螺丝	Screw	1	02#
18	15227-018	滑块	Slide block	1	02#
19	15227-019	卡簧 E5	E5	1	02#
20	15227-020	压杆提升导位板	Lever guide	1	02#
21	15227-021	螺丝 11/64-40 L=7	Screw 11/64-40 L=7	2	02#
22	15227-022	段螺丝 1/4-40	Screw SM1/4-40	1	02#
23	15227-023	段螺丝 1/4-41	Screw SM1/4-40	1	02#
24	15227-024	滚针轴承	Needle bearing	4	02#
25	15227-025	外压提升连杆	Link	1	02#
26	15227-026	外压摆动曲柄左	Crank	1	02#
27	15227-027	螺丝 1/4-24 L=16	Screw 1/4-24 L=16	1	02#
28	15227-028	压脚摆动轴左轴套	Bush, L	1	02#
29	15227-029	螺丝 1/4-40 L=5	Screw 1/4-40 L=5	2	02#
30	15227-030	挡圈	Collar	1	02#
31	15227-031	压脚摆动轴	Upper feed shaft	1	02#
32	15227-032	O型圈	O ring	1	02#
33	15227-033	螺丝 15/64-28 L=6	Screw 15/64-28 L=6	1	02#
34	15227-034	压脚摆动轴右轴套	Bush, M	1	02#
35	15227-035	压脚摆动右曲柄	Feed lifting arm crank, R	1	02#
36	15227-036	螺丝 15/64-28 L=15	Screw SM15/64-28 L=15	1	02#
37	15227-037	连杆螺丝	Screw 1/4-40	1	02#
38	15227-038	摆压脚	Walking foot	1	02#
39	15227-039	摆压脚大连杆	Connecting rod	1	02#
40	15227-040	螺母 M6-1	Nut M6-1	1	02#
41	15227-041	垫片W6.5	W6.5	1	02#
42	15227-042	摆压脚同步调节器组件	Roller shaft assy.	1	02#
43	15227-043	提升压脚变动曲柄轴	Pin	1	02#
44	15227-044	滑块	Slide block	1	02#
45	15227-045	卡簧 E5	E5 Snap ring	1	02#
46	15227-046	摆压脚叉形杆销	Pin	1	02#
47	15227-047	螺丝 M5 L=6	M5 L=6	1	02#
48	15227-048	摆压脚叉形杆	Crank	1	02#
49	15227-049	螺丝 9/64-40 L=7	Screw 9/64-40 L=7	4	02#
50	15227-050	摆压脚导柱板	Plart	1	02#
51	15227-051	段螺丝 1/4-40	Screw 1/4-40	1	02#
52	15227-052	摆压脚连杆	Link	1	02#
53	15227-053	摆压脚杆座	Clamper	1	02#
54	15227-054	螺丝 11/64-40 L=12	Screw SM11/64-40 L=12	2	02#
55	15227-055	压脚连杆压板	Block	1	02#
56	15227-056	摆压脚杆压板垫片	Collar	2	02#
57	15227-057	摆压脚杆	Connecting rod	1	02#
58	15227-058	摆压脚叉形杆	Lever	1	02#
59	15227-059	摆压脚调压螺丝	Screw	1	02#
60	15227-060	摆压脚调压螺母	Nut	1	02#
61	15227-061	摆压脚调压杆弹簧	Spring compression	1	02#
62	15227-062	调压杆弹簧导柱	Guide shaft	1	02#
63	15227-063	摆压脚调压螺钉架	Bracket	1	02#
64	15227-064	螺丝 11/64-40 L=7	Screw 11/64-40 L=7	2	02#
65	15227-065	羊毛毡	Wool felt	1	02#
66	15227-066	螺丝 9/64-40 L=5	Screw 9/64-40 L=5	1	02#

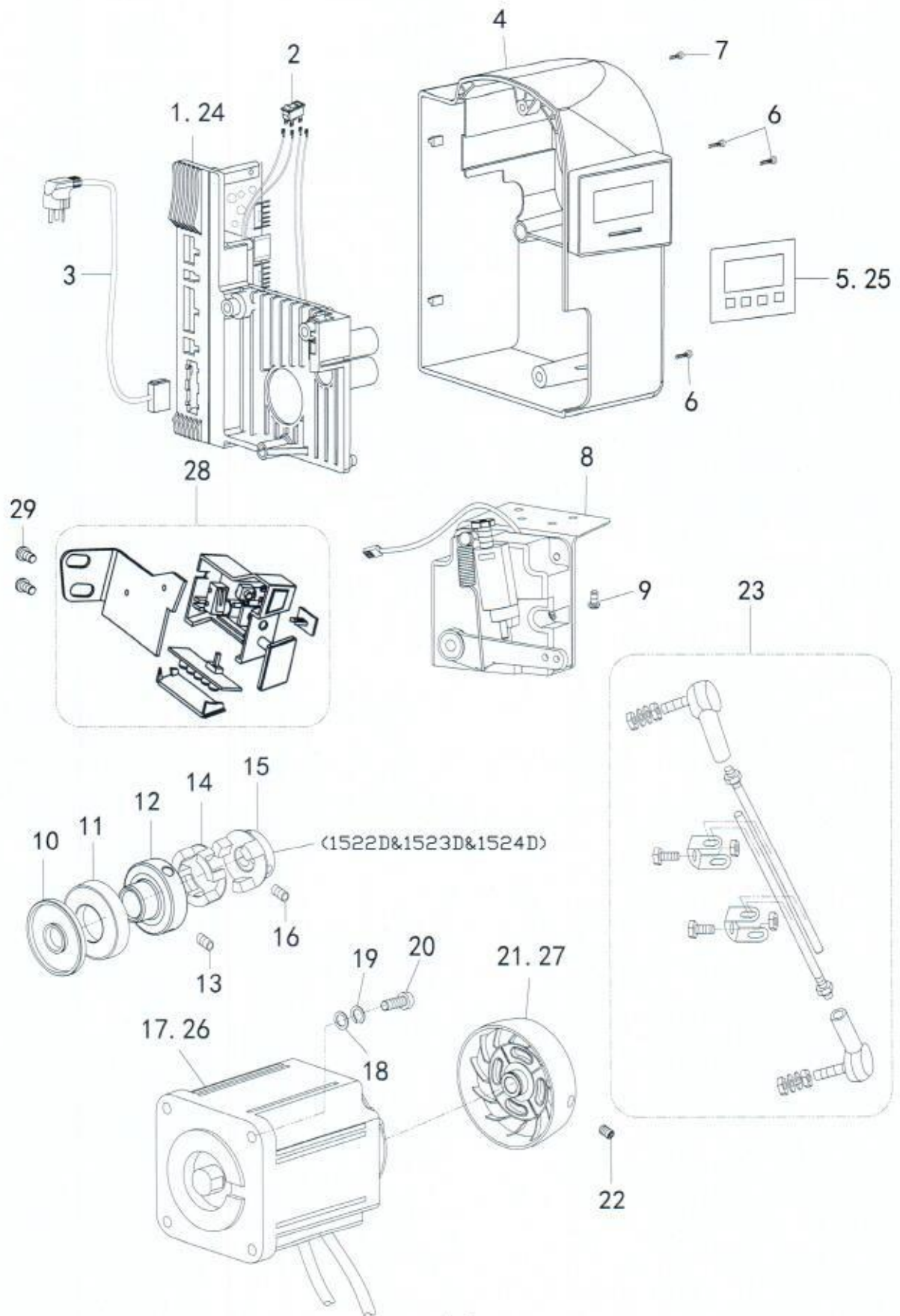
1...01# FOR 1522D, 1523D, 1524D;
2...02# FOR 2522D, 2523D, 2524D

8. 自动抬压脚/Driver components

序号 No.	图号 Part No.	名称	DESCRIPTION	数量 QTY	备注 Remark
1	15228-001	抬压脚电磁铁	Electromagnet asm.	1	01#
2	15228-002	顶帽	Top head	1	01#
3	15228-003	膝控右杠杆	Lifting lever link	1	01#
4	15228-004	橡胶圈	Rubber ring	1	01#
5	15228-005	台阶螺丝	Screw 1/4-28	1	01#
6	15228-006	螺母 1/4-28	Nut 1/4-28	1	01#
7	15228-007	螺丝3/16-28 L=8	Screw 3/16-28 L=8	4	01#
8	15228-008	膝控右杠杆	Lifting lever link	1	02#
9	15228-009	摆杆	Pendulum	1	02#
10	15228-010	挡圈	Retaining rings	1	02#
11	15228-011	螺丝11/64-40 L=5	Screw 11/64-40 L=5	2	02#
12	15228-012	螺母M16X1.5	Nut M16X1.5	1	02#
13	15228-013	轴套	Sleeve	1	02#
14	15228-014	密封圈	Seal ring	1	02#
15	15228-015	曲柄	Crank	1	02#
16	15228-016	螺丝 M5 L=12	M5 L=12	1	02#
17	15228-017	电磁铁支架	Bracket	1	02#
18	15228-018	螺丝 M6 L=8	M6 L=8	3	02#
19	15228-019	抬压脚电磁铁	Electromagnets	1	02#
20	15228-020	螺丝 M6 L=8	M6 L=8	3	02#
21	15228-021	垫块	Pad block	1	02#
22	15228-022	螺丝 M4 L=5	M4 L=5	1	02#
23	15228-023	罩壳	Enclosure	1	02#
24	15228-024	螺丝 M3 L=5	M3 L=5	2	02#
25	15228-025	后窗板	Side plate	1	02#
26	15228-026	后窗板垫	Gasket	1	02#

1...01# FOR 1522D, 1523D, 1524D; ...02# FOR 2522D, 2523D, 2524D

9. 电控部件/Driver components

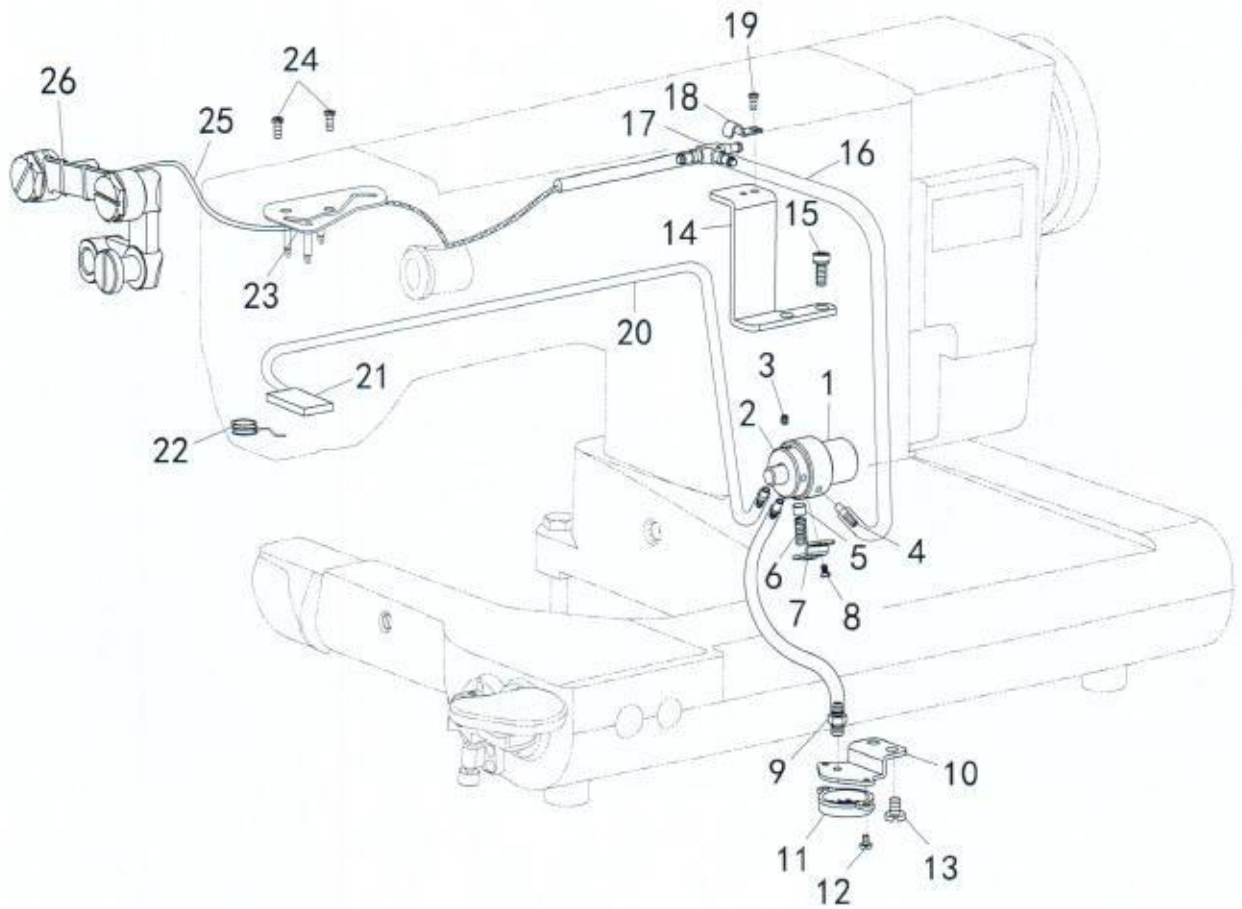


9. 电控部件/Driver components

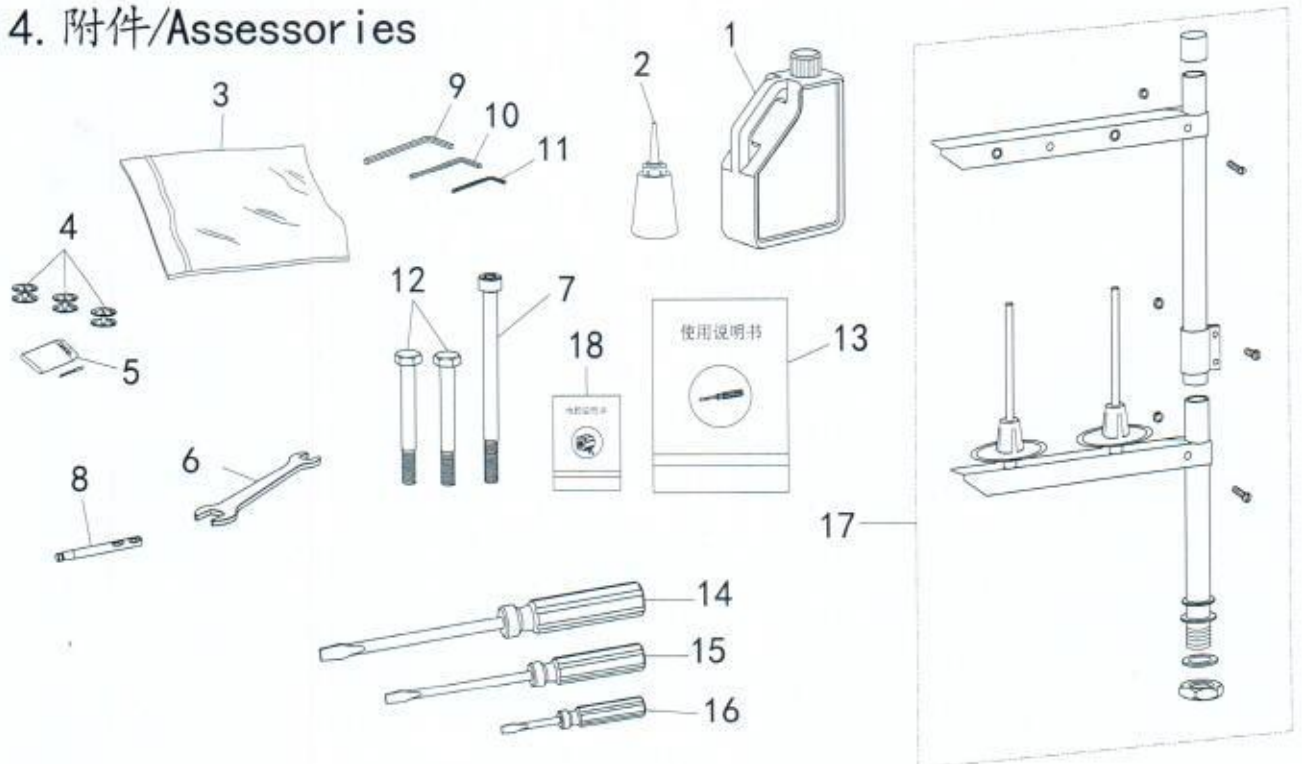
序号 No.	图号 Part No.	名称	DESCRIPTION	数量 QTY	备注 Remark
1	15229-001	电控组件	Control asm	1	01#
2	15229-002	电源开关	Power switch	1	
3	15229-003	电源线	Power line	1	
4	15229-004	电控罩	Control cover	1	
5	15229-005	操作面板	Face plate	1	01#
6	15229-006	螺丝M5 L=35	Screw M5 L=35	3	
7	15229-007	螺丝M5 L=20	Screw M5 L=20	2	
8	15229-008	脚踏控速器	Thread asm	1	
9	15229-009	螺钉	Screw	3	
10	15229-010	上轴油封	Oil seal	1	01#
11	15229-011	轴承	Ball bearing	1	01#
12	15229-012	连轴器A	Clutch component (A)	1	01#
13	15229-013	螺丝M6 L=6	Screw M6 L=6	3	01#
14	15229-014	连轴器橡胶垫	Alnico tray	1	01#
15	15229-015	连轴器B	Clutch component (B)	1	01#
16	15229-016	螺丝M6 L=6	Screw M6 L=6	3	01#
17	15229-017	AC伺服马达550W	AC servo motor 550W	1	01#
18	15229-018	垫片	Washer	4	
19	15229-019	弹性垫片	Spring washer	4	
20	15229-020	螺丝M5 L=20	Screw M5 L=20	4	
21	15229-021	手轮	Hand wheel	1	01#
22	15229-022	螺丝 15/64-28 L=10	Screw 15/64-28 L=10	2	
23	15229-023	拉杆组件	Live festival balllink asm	1	02#
24	15229-024	电控组件	Control asm	1	02#
25	15229-025	操作面板	Face plate	1	02#
26	15229-026	AC伺服马达750W	AC servo motor 750W	1	02#
27	15229-027	手轮	Hand wheel	1	02#
28	15229-028	灯组倒缝开关	Auto reverse feed switch asm	1	
29	15229-029	螺丝 3/16-28 L=9	Screw 3/16-28 L=9	2	

1...01# FOR 1522D, 1523D, 1524D; ...02# FOR 2522D, 2523D, 2524D

10. 供油机构/Oil lubrication mechanism



14. 附件/Assessories



10. 供油机构/Oil lubrication mechanism

序号 No.	图号 Part No.	名称	DESCRIPTION	数量 QTY	备注 Remark
1	1522A-001	柱塞泵轴套	Sleeve	1	
2	1522A-002	柱塞泵	Piston pump	1	
3	1522A-003	螺丝 11/64-40 L=6	Screw SM11/64-40 L=6	2	
4	1522A-004	油嘴	Oil tube	3	
5	1522A-005	柱塞	Plunger	1	
6	1522A-006	弹簧	Spring	1	
7	1522A-007	挡板	Holder plate	1	
8	1522A-008	螺丝 1/8-40 L=4.5	Screw 1/8-40 L=4.5	1	
9	1522A-009	吸油嘴	Oil tube	1	
10	1522A-010	油泵支架	Bracket	1	
11	1522A-011	过滤网	Filter cover	1	
12	1522A-012	螺丝 M4 L=5	M4 L=5	2	
13	1522A-013	螺丝 15/64-28 L=6	Screw SM15/64-28 L=6	2	
14	1522A-014	T形油管支架	Bracket	1	
15	1522A-015	螺丝 M6 L=10	M6 L=10	2	
16	1522A-016	供回油管	Oil supply pipes	1	
17	1522A-017	T形油管	T vitta	1	
18	1522A-018	压板	Platen	1	
19	1522A-019	螺丝 9/64-40 L=10	Screw 9/64-40 L=10	1	
20	1522A-020	回油管	Tube assy.	1	
21	1522A-021	羊毛毡	Wool felt	1	
22	1522A-022	羊毛毡弹簧	Spring	1	
23	1522A-023	油泵体盖板组件	Setting plate	1	
24	1522A-024	螺丝 9/64-40 L=13	Screw 9/64-40 L=13	2	
25	1522A-025	油绳	Oil tip	2	
26	1522A-026	扎带	Tie	3	

11. 附件/Assessories

序号 No.	图号 Part No.	名称	DESCRIPTION	数量 QTY	备注 Remark
1	1522B-001	油壶	Oil tank	1	
2	1522B-002	注油壶	Oil pot	1	
3	1522B-003	机头罩	Accessory bag	1	
4	1522B-004	梭芯	Bobbin	3	
5	1522B-005	机针包 DPX17 18#	Needle	1	
6	1522B-006	扳手	Wrench	1	
7	1522B-007	螺栓M10 L=140	Bolt M10 L=140	1	
8	1522B-008	过线柱	Needle thread guide pin	1	
9	1522B-009	5MM六角扳手	Wrench, 5	1	
10	1522B-010	4MM六角扳手	Wrench, 4	1	
11	1522B-011	3MM六角扳手	Wrench, 3	1	
12	1522B-012	螺栓M10 L=90	Bolt M10 L=90	2	
13	1522B-013	说明书	Instruction	1	
14	1522B-014	大起子	Screw driver, L	1	
15	1522B-015	中起子	Screw driver, M	1	
16	1522B-016	小起子	Screw driver, S	1	
17	1522B-017	二线架组件	Thread stand assy.	1	
18	1522B-018	电控说明书	Electronic control instruction	1	
19	1522B-019	垫片	Washer	2	
20	1522B-020	螺母 M10	Nut M10	3	

