

# **GLOBAL**

## **WF 1925 - 31 DD-AUT**

**PARTS BOOK**

---

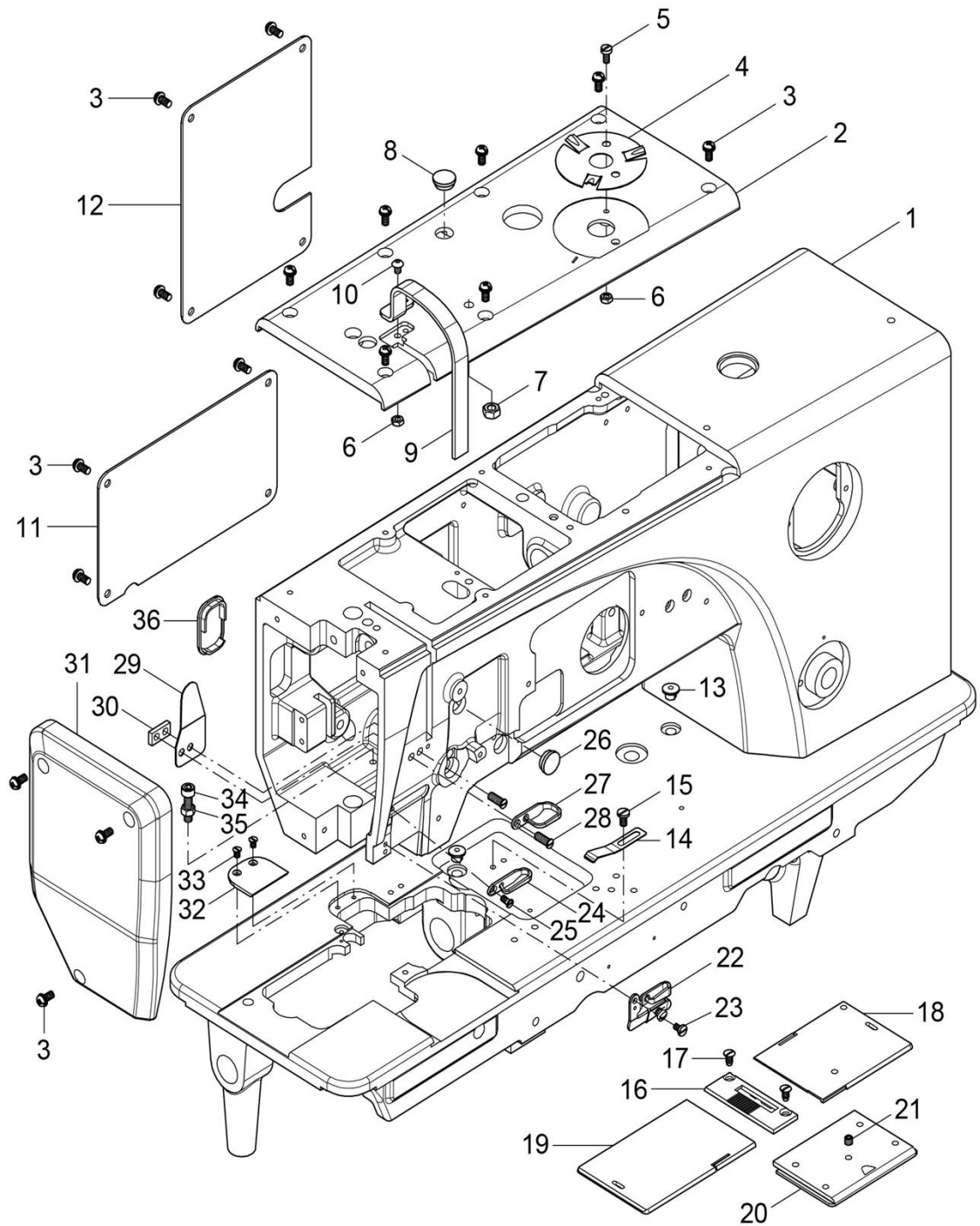
## CONTENTS

A. Arm bed and its accessories.....	2
B. Thread tension regulator mechanism.....	4
C. Upper shaft, belt drive mechanism.....	6
D. Bobbin winder and tension releasing mechanism.....	8
E. Presser foot mechanism.....	10
F. Presser foot alternative mechanism.....	12
G. Needle bar and thread take-up lever mechanism.....	14
H. Stitch regulator mechanism.....	16
I. Lower shaft mechanism.....	18
J. Feed rock shaft mechanism.....	20
K. Hook mechanism.....	22
L. Thread trimming mechanism (1).....	24
M. Thread trimming mechanism (2).....	26
N. Oil lubrication mechanism.....	28
O. Electrical mechanism.....	30
P. Accessories.....	32



## A. Arm bed and its accessories

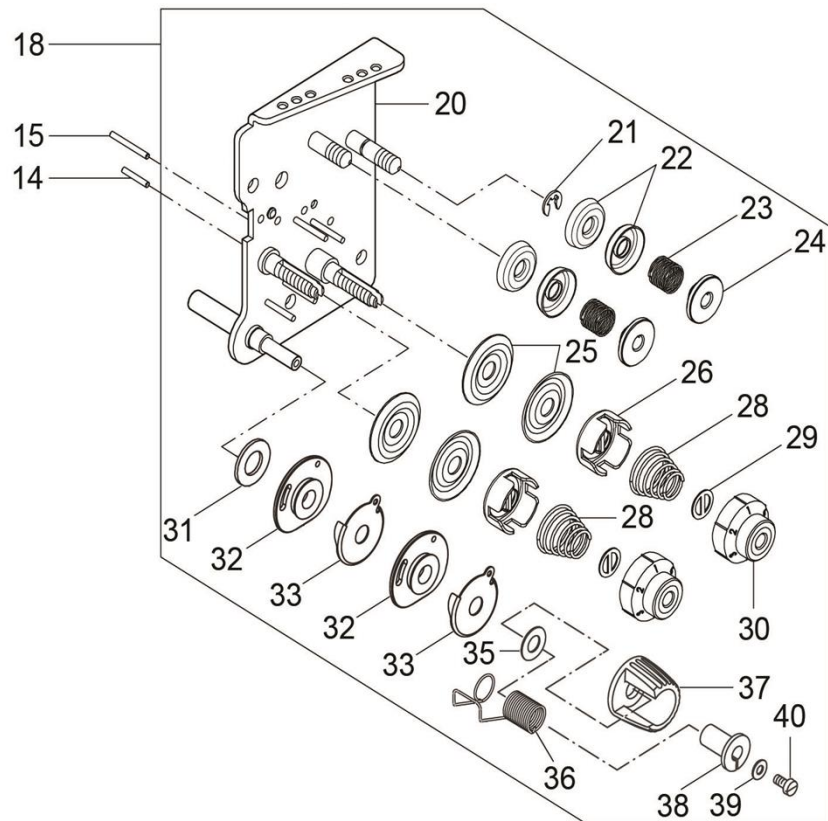
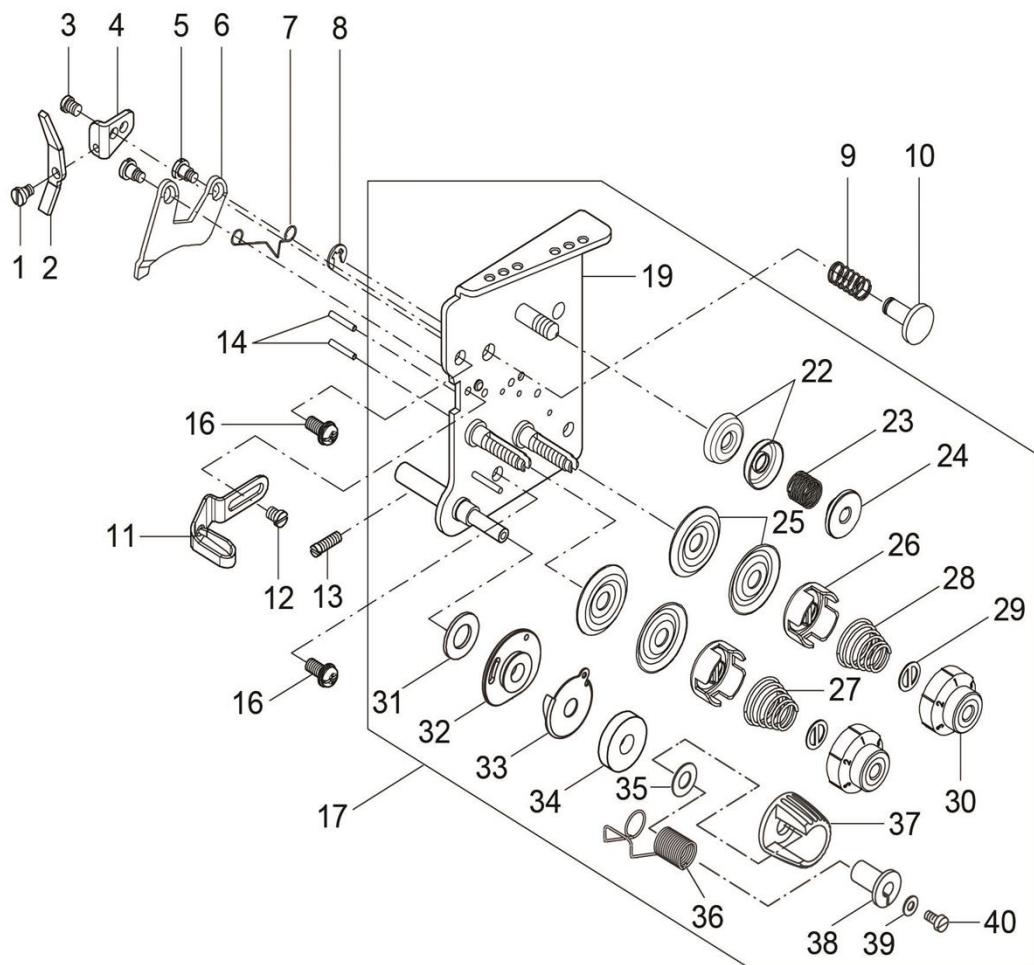
---



## A. Arm bed and its accessories

Fig. No.	Part No.	Name	1-needle	2-needle	Remark
A01	7.01.01.103	Machine casting	1	1	
A02	7.02.11.670	Upper cover plate	1	1	
A03	7.02.15.160	Face plate screw	18	18	SM11/64(40)×8
A04	7.02.18.440	Scale plate spring sheet	1	1	
A05	7.02.15.006	Screw	1	1	GB/T65 M4×8
A06	7.02.15.268	Nut	2	2	GB/T6170 M4
A07	7.02.15.067	Nut	1	1	GB/T6170 M6
A08	7.02.16.037	Rubber plug	1	1	
A09	7.02.11.03901	Thread take-up cover	1	1	
A10	7.02.15.1120	Thread take-up cover screw	1	1	
A11	7.02.11.67201	Back cover (left)	1	1	
A12	7.02.11.67301	Back cover (right)	1	1	
A13	7.02.16.040	Oil cap	2	2	
A14	7.02.18.056	Slide plate stop plate	1	1	
A15	7.02.15.116	Screw	1	1	SM11/64(40)×8
A16	7.02.02.691	Needle plate	1		
A17	7.02.15.154	Needle plate screw	2		SM11/64(40)×8
A18	7.02.02.682	Slide plate (right)	1		
A19	7.02.02.038	Slide plate (left)	1		
A20	7.02.02.036	Slide plate (front) complete		1	
A21	7.02.15.210	Screw		1	
A22	7.02.14.001	Thread guide	1	1	
A23	7.02.15.212	Nut	1	1	SM9/64(40)×6
A24	7.02.14.020	Thread guide (middle)	1	1	
A25	7.02.15.214	Screw	1	1	SM9/64(40)×6.5
A26	7.02.16.038	Rubber plug	1	1	
A27	7.02.14.011	Thread guide (upper)	1	1	
A28	7.02.15.114	Screw	2	2	SM3/16(28)×11
A29	7.02.11.044	Oil guard	1	1	
A30	7.02.12.012	Plate for oil guard	1	1	
A31	7.02.11.671	Face plate	1	1	
A32	7.02.02.683	Small cover plate	1	1	
A33	7.02.15.605	Screw	2	2	SM9/64(40)×6
A34	7.02.15.544	Screw	1	1	GB/T70.1 M5×20
A35	7.02.15.068	Nut	1	1	GB/T6170 M5
A36	7.02.16.606	Plastic cover	1	1	

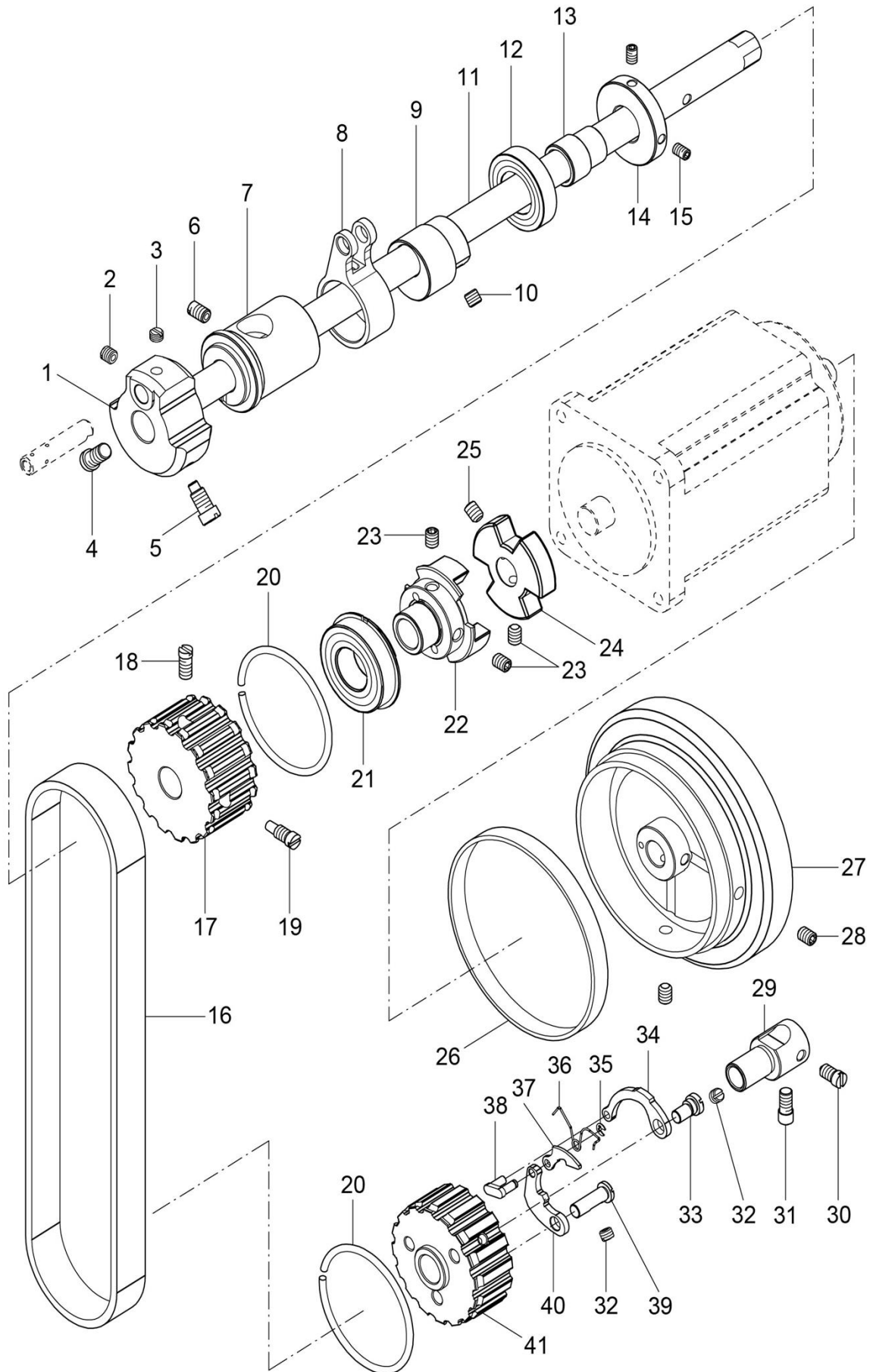
## B. Thread tension regulator mechanism



## B. Thread tension regulator mechanism

Fig. No.	Part No.	Name	1-needle	2-needle	Remark
B01	7.02.15.600	Screw	1	1	
B02	7.02.17.199	Lever	1	1	
B03	7.02.15.1139	Screw	1	1	
B04	7.02.17.200	Mounting plate	1	1	
B05	7.02.15.1128	Screw	2	2	
B06	7.02.11.659	Tension releasing plate	1	1	
B07	7.02.17.530	Tension releasing spring	1	1	
B08	7.02.18.039	Stop ring	1	1	GB/T896 5
B09	7.02.17.201	Spring	1	1	
B10	7.02.10.191	Push button	1	1	
B11	7.02.14.171	Thread guide	1	1	
B12	7.02.15.1129	Screw	1	1	
B13	7.02.15.215	Screw	1	1	
B14	7.02.10.190	Tension releasing pin	2	1	
B15	7.02.10.631	Tension releasing pin		1	
B16	7.02.15.160	Screw	2	2	
B17	7.02.01.412	Thread tension regulator assy.	1		
B18	7.02.01.414	Thread tension regulator assy.		1	
B19	7.02.23.400	Thread tension plate	1		
B20	7.02.23.401	Thread tension plate		1	
B21	7.02.18.039	Stop ring		1	GB/T896 5
B22	7.02.23.402	Thread tension disk	2	4	
B23	7.02.23.403	Thread tension adjusting spring	1	2	
B24	7.02.23.404	Thread tension adjusting nut	1	2	
B25	7.02.23.405	Thread tension disk	4	4	
B26	7.02.23.406	Tension disk	2	2	
B27	7.02.23.407	Adjusting spring	1		
B28	7.02.23.382	Thread tension spring	1	2	
B29	7.02.23.408	Pressure spring plate	2	2	
B30	7.02.23.409	Thread tension nut	2	2	
B31	7.02.23.410	Washer	1	1	
B32	7.02.23.411	Fixed plate	1	2	
B33	7.02.23.412	Thread guide disk	1	2	
B34	7.02.23.413	Heel block	1		
B35	7.02.23.414	Washer	1	1	
B36	7.02.23.385	Thread take-up spring	1	1	
B37	7.02.23.415	Thread take-up spring adjusting sleeve	1	1	
B38	7.02.23.416	Ring	1	1	
B39	7.02.23.417	Washer	1	1	
B40	7.02.23.418	Screw	1	1	

## C. Upper shaft, belt drive mechanism

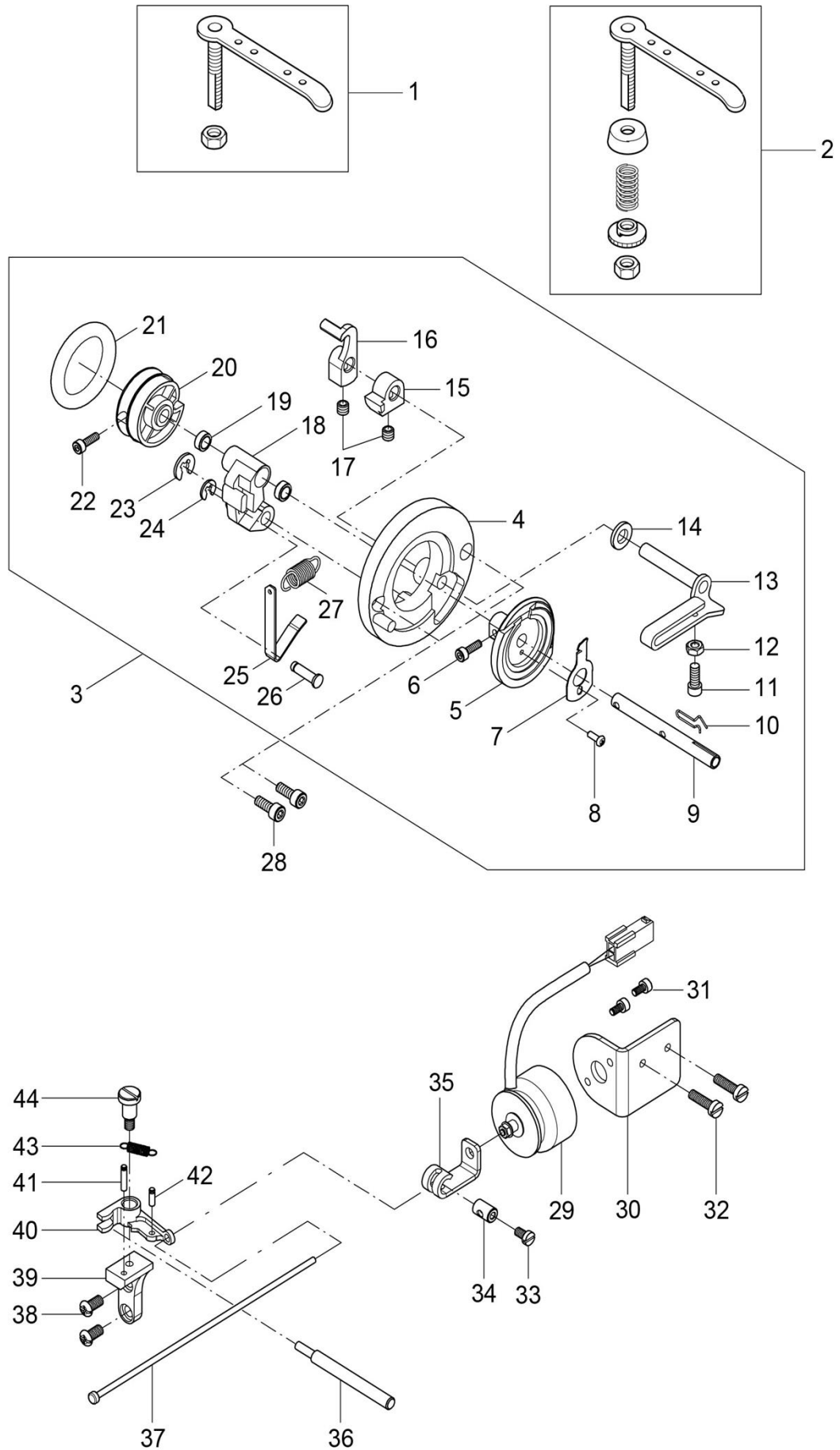




### C. Upper shaft, belt drive mechanism

Fig. No.	Part No.	Name	1-needle	2-needle	Remark
C01	7.02.06.017	Crank	1	1	
C02	7.02.15.123	Screw	1	1	SM1/4(40)×6
C03	7.02.15.122	Screw	1	1	SM1/4(40)×4
C04	7.02.15.124	Screw	1	1	SM9/32(28)×14
C05	7.02.15.125	Screw	1	1	SM9/32(28)×13
C06	7.02.15.216	Screw	1	1	SM1/4(24)×10
C07	7.02.08.068	Upper shaft bushing (left)	1	1	
C08	7.02.06.112	Eccentric wheel link	1	1	
C09	7.02.06.125	Presser foot lifting eccentric wheel	1	1	
C10	7.02.15.248	Screw	2	2	SM1/4(40)×6
C11	7.02.03.554	Upper shaft	1	1	
C12	7.02.04.250	Upper shaft bearing	1	1	61904-2Z
C13	7.02.08.624	Upper shaft bearing bushing	1	1	
C14	7.02.07.360	Thread winder driven wheel	1	1	
C15	7.02.15.049	Screw	2	2	M5x8
C16	7.02.07.033	Timing belt	1	1	
C17	7.02.07.032	Timing belt wheel	1	1	
C18	7.02.15.128	Screw	1	1	SM15/64(28)×12
C19	7.02.15.133	Screw	1	1	SM15/64(28)×14.5
C20	7.02.17.035	Elastic retaining ring	2	2	
C21	7.02.04.007	Bearing	1	1	6004-2ZNR
C22	7.02.06.491	Coupling (left)	1	1	
C23	7.02.15.990	Screw	3	3	M6(0.75)×8
C24	7.02.05.593	Coupling (right)	1	1	
C25	7.02.15.050	Screw	1	1	M6(0.75)×8
C26	7.02.09.120	Stitch length indicating ring	1	1	
C27	7.02.07.280	Handwheel	1	1	
C28	7.02.15.057	Screw	2	2	GB/T 77 M6×8
C29	7.02.10.043	Synchronous belt wheel shaft	1	1	SM15/64(28)×10.5
C30	7.02.15.218	Screw	1	1	SM15/64(28)×10.5
C31	7.02.15.219	Screw	1	1	
C32	7.02.15.145	Screw	2	2	SM15/64(28)×4.5
C33	7.02.10.041	Long link pin	1	1	
C34	7.02.05.032	Long link	1	1	
C35	7.02.18.048	Split retaining ring	1	1	GB/T896 2.5
C36	7.02.17.036	Synchronous belt wheel spring	1	1	
C37	7.02.05.034	Link	1	1	
C38	7.02.05.033	Connecting pin	1	1	
C39	7.02.10.042	Short link pin	1	1	
C40	7.02.05.035	Short link	1	1	
C41	7.02.07.034	Synchronous belt wheel	1	1	

## D. Bobbin winder and tension releasing mechanism

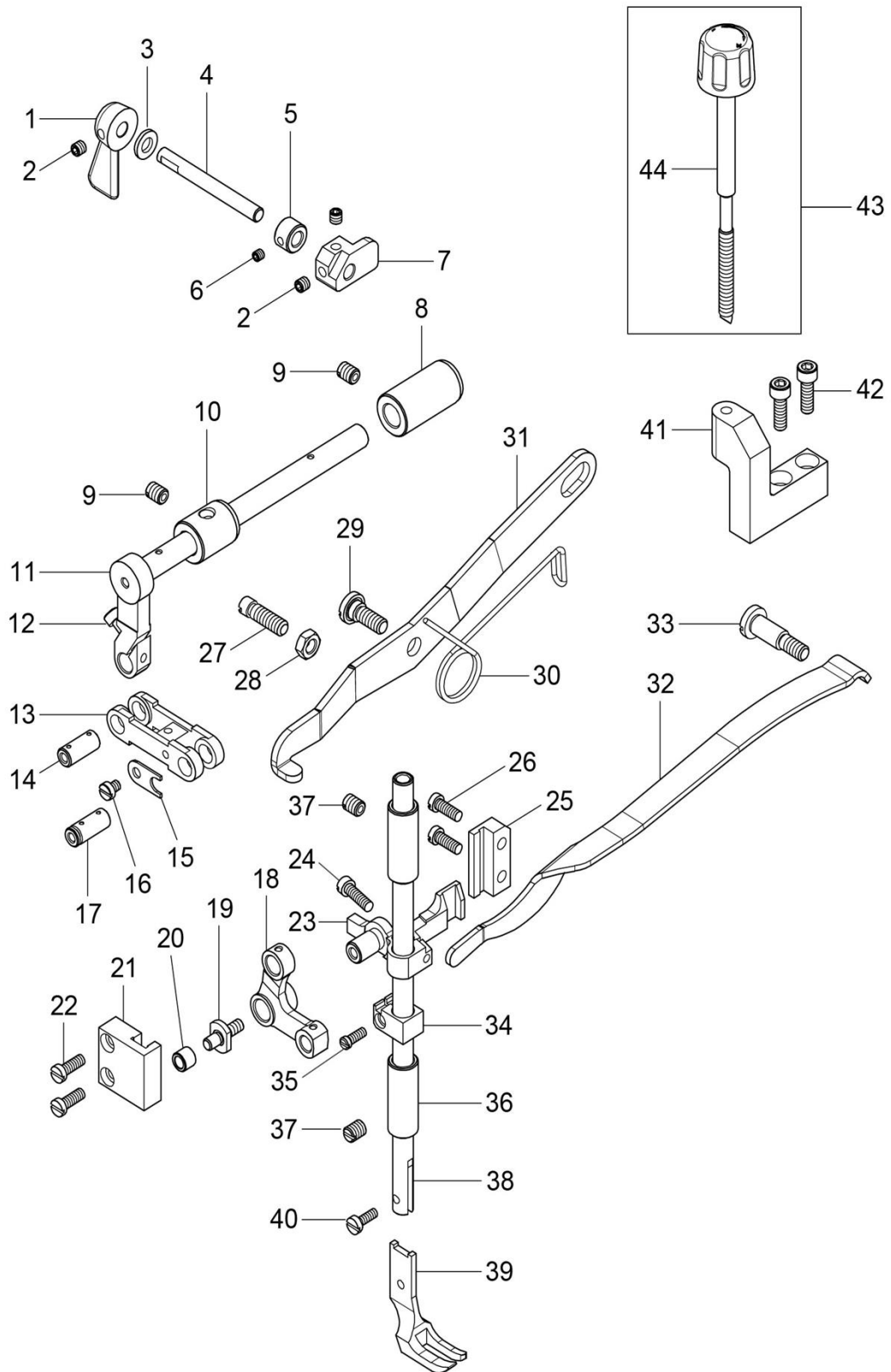


## D. Bobbin winder and tension releasing mechanism

Fig. No.	Part No.	Name	1-needle	2-needle	Remark
D01	7.02.14.170	Thread guide lever assy.	1	1	
D02	7.02.01.302	Bobbin winder thread tension assy.	1	1	
D03	7.02.01.411	Bobbin winder assy.	1	1	
D04	7.02.23.420	Thread winder and tension bracket base	1	1	
D05	7.02.23.421	Bobbin disk	1	1	
D06	7.02.23.422	Screw	1	1	GB/T 70.1 M3×12
D07	7.02.23.386	Knife	1	1	
D08	7.02.23.423	Screw	1	1	
D09	7.02.23.424	Bobbin winder shaft	1	1	
D10	7.02.23.425	Bobbin retaining spring	1	1	
D11	7.02.23.426	Screw	1	1	GB/T 70.1 M4×12
D12	7.02.23.427	Nut	1	1	
D13	7.02.23.428	Thread quantity adjusting lever	1	1	
D14	7.02.23.429	Washer	1	1	
D15	7.02.23.430	Thread quantity adjusting block	1	1	
D16	7.02.02.685	Bobbin winder stopper claw	1	1	
D17	7.02.15.056	Screw	2	2	GB/T 77 M5×5
D18	7.02.23.432	Connecting seat	1	1	
D19	7.02.23.433	Ball bearing	2	2	
D20	7.02.23.434	Friction wheel	1	1	
D21	7.02.23.435	Rubber ring	1	1	
D22	7.02.23.436	Screw	1	1	GB/T 70.1 M3×10
D23	7.02.18.039	Splite retaining ring	1	1	
D24	7.02.23.438	Splite retaining ring	1	1	
D25	7.02.23.439	Spring plate	1	1	
D26	7.02.23.440	Fixed pin	1	1	
D27	7.02.23.387	Tension spring	1	1	
D28	7.02.15.063	Screw	2	2	GB/T 70.1 M4×10
D29	7.02.19.470	Tension releasing solenoid	1	1	
D30	7.02.11.675	Tension releasing solenoid fixed plate	1	1	
D31	7.02.15.976	Screw	2	2	GB/T70.1 M3×5
D32	7.02.15.147	Screw	2	2	SM11/64"(40)×15
D33	7.02.15.250	Screw	1	1	SM9/64(40)×6
D34	7.02.06.496	Tension releasing solenoid joint	1	1	
D35	7.02.11.676	Tension releasing solenoid connecting plate	1	1	
D36	7.02.10.190	Stand thread pin	1	1	
D37	7.02.05.613	Tension releasing solenoid pull lever	1	1	
D38	7.02.15.176	Screw	2	2	SM11/64(40)×8
D39	7.02.05.155	Tension releasing stand assy.	1	1	
D40	7.02.05.156	Tension releaser	1	1	
D41	7.02.10.199	Spring hanging pin	1	1	
D42	7.02.10.200	Spring hanging pin 2	1	1	
D43	7.02.17.220	Tension releasing reset spring	1	1	
D44	7.02.15.610	Screw	1	1	

## E. Presser foot mechanism

---

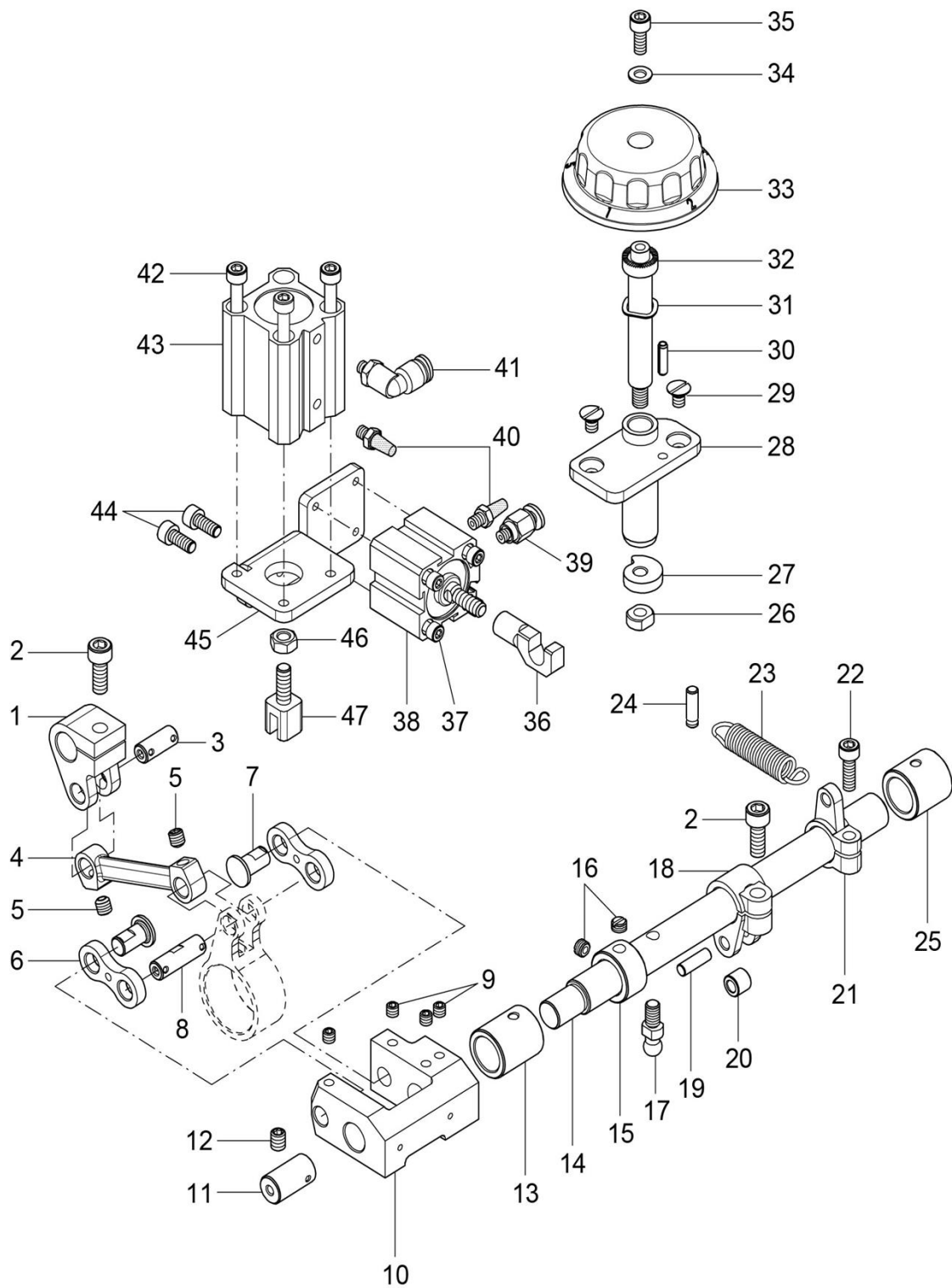


## E. Presser foot mechanism

Fig. No.	Part No.	Name	1-needle	2-needle	Remark
E01	7.02.05.01101	Presser foot lifting lever	1	1	
E02	7.02.15.056	Screw	3	3	GB/T 77 M5×5
E03	7.02.18.322	Washer	2	2	GB/T 97.1 6
E04	7.02.03.563	Press lever shaft	1	1	
E05	7.02.09.117	Straining ring	1	1	
E06	7.02.15.047	Screw	1	1	M4×4
E07	7.02.12.366	Presser foot lifting block	1	1	
E08	7.02.08.621	Presser foot lifting crank shaft bushing(right)	1	1	
E09	7.02.15.216	Screw	2	2	SM1/4(24)×10
E10	7.02.08.070	Presser foot lifting crank shaft bushing	1	1	
E11	7.02.03.555	Presser foot lifting crank shaft	1	1	
E12	7.02.15.405	Screw	1	1	M4×14
E13	7.02.05.612	Crank link	1	1	
E14	7.02.10.621	Crank link pin	1	1	
E15	7.02.11.652	Stopper plate	1	1	
E16	7.02.15.100	Screw	1	1	GB/T 65 M4×4
E17	7.02.10.620	Crank link pin (long)	1	1	
E18	7.02.05.611	Presser foot lifting lever	1	1	
E19	7.02.10.044	Presser foot lifting lever hinge shaft	1	1	
E20	7.02.08.071	Slide post	1	1	
E21	7.02.12.365	Slide block guide rail	1	1	
E22	7.02.15.147	Screw	2	2	SM11/64(40)×15
E23	7.02.05.040	Presser bar lifting bracket	1	1	
E24	7.02.15.147	Screw	1	1	SM11/64(40)×15
E25	7.02.12.029	Presser bar lifting bracket guide rail	1	1	
E26	7.02.15.146	Screw	2	2	SM11/64(40)×12
E27	7.02.15.224	Screw	1	1	SM1/4(24)×19
E28	7.02.15.264	Reset spring nut	1	1	SM1/4(24)
E29	7.02.15.225	Screw	1	1	
E30	7.02.17.037	Knee control lifting lever reset spring	1	1	
E31	7.02.17.038	Knee control lifting lever	1	1	
E32	7.02.17.039	Presser bar spring	1	1	
E33	7.02.15.227	Screw	1	1	
E34	7.02.12.030	Presser bar spring bracket	1	1	
E35	7.02.15.231	Screw	1	1	SM9/64(40)×10
E36	7.02.08.072	Outer presser bar bushing	2	2	
E37	7.02.15.216	Screw	2	2	SM1/4(24)×10
E38	7.02.03.040	Presser bar	1	1	
E39	7.02.02.043	Outer presser foot	1		
E40	7.02.15.230	Screw	1		
E41	7.02.12.368	Adjusting screw fixed block	1	1	
E42	7.02.15.058	Screw	2	2	GB/T70.1 M5×16
E43	7.02.16.590	Screw	1	1	
E44	7.02.15.1125	Screw bolt	1	1	

## F. Presser foot alternative mechanism

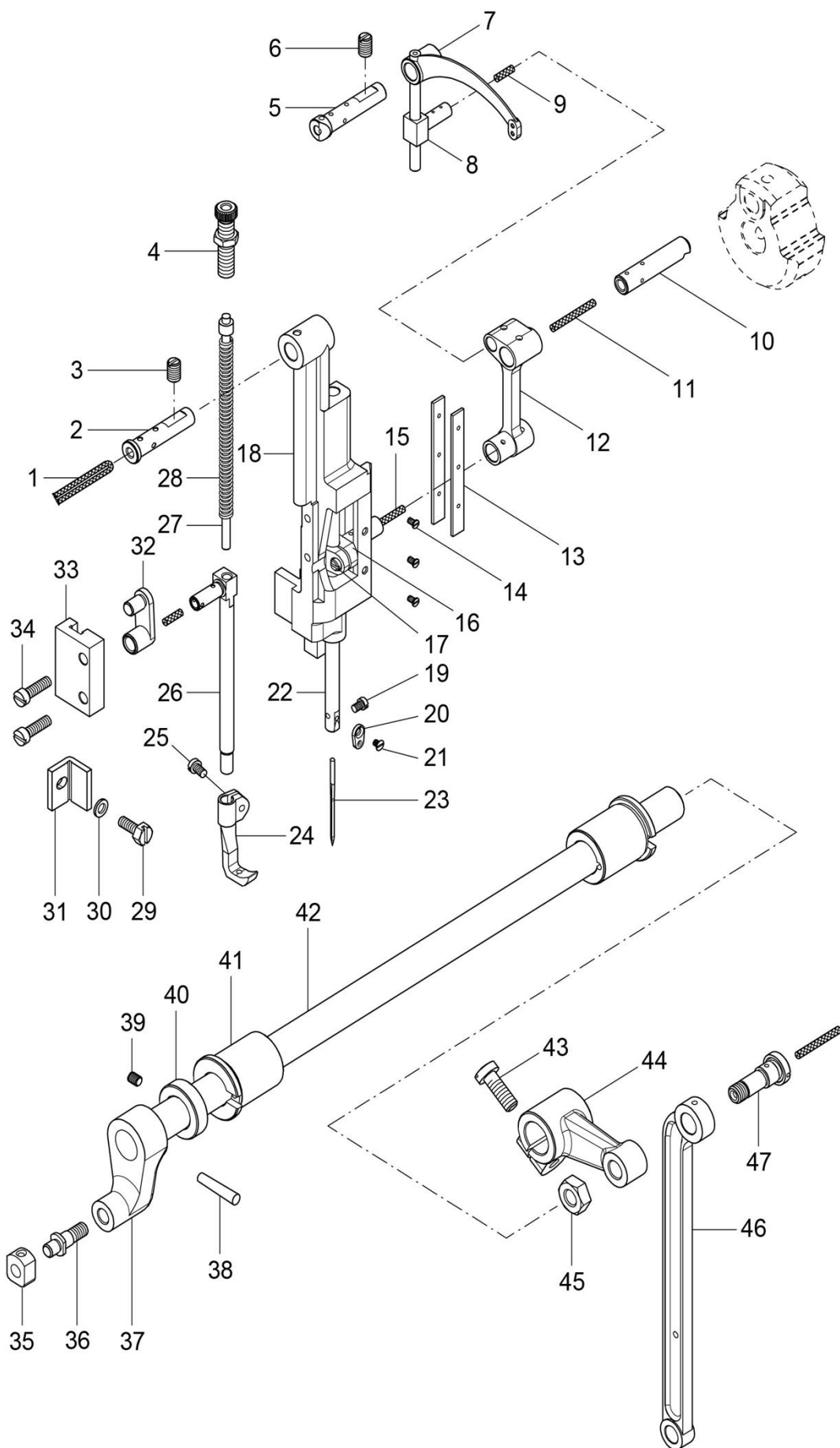
---



## F. Presser foot alternative mechanism

Fig. No.	Part No.	Name	1-needle	2-needle	Remark
F01	7.02.06.490	Lifting shaft adjusting crank	1	1	
F02	7.02.15.048	Screw	2	2	GB/T70.1 M6×16
F03	7.02.03.164	Lifting shaft adjusting shaft	1	1	
F04	7.02.05.610	Lifting shaft adjusting crank link	1	1	
F05	7.02.15.990	Screw	2	2	M6(0.75)×8
F06	7.02.05.324	Crank link(left)	2	2	
F07	7.02.10.341	Link pin	2	2	
F08	7.02.03.166	Presser foot lifting shaft bracket crank shaft	1	1	
F09	7.02.15.056	Screw	4	4	GB/T 77 M5×5
F10	7.02.06.220	Alternative adjusting crank(left)	1	1	
F11	7.02.10.628	Presser foot lifting adjusting shaft(short)	1	1	
F12	7.02.15.057	Screw	1	1	GB/T 77 M6×8
F13	7.02.08.620	Presser foot lifting adjusting busing(left)	1	1	
F14	7.02.03.585	Presser foot lifting adjusting shaft	1	1	
F15	7.02.09.014	Adjusting shaft straining ring	1	1	
F16	7.02.15.122	Screw	2	2	SM1/4"(40)×4
F17	7.02.15.190	Screw	1	1	
F18	7.02.06.492	Alternative adjusting air cylinder crank	1	1	
F19	7.02.10.625	Alternative crank pin	1	1	
F20	7.02.10.624	Pin roller	1	1	
F21	7.02.06.514	Alternative adjusting reset crank	1	1	
F22	7.02.15.058	Screw	1	1	GB/T70.1 M5×16
F23	7.02.17.230	Reset spring	1	1	
F24	7.02.10.230	Spring hanging pin	1	1	
F25	7.02.08.113	Presser foot lifting adjusting busing(right)	1	1	
F26	7.02.15.174	Nut	1	1	SM1/4"(40)
F27	7.02.06.515	Presser foot lifting adjusting cam	1	1	
F28	7.02.13.530	Presser foot lifting adjusting seat	1	1	
F29	7.02.15.003	Screw	2	2	M5×8
F30	7.02.10.623	Elastic round post pin	1	1	GB/T879.1 4x14
F31	7.02.18.142	Wave shape washer	1	1	
F32	7.02.10.622	Presser foot lifting adjusting cam shaft	1	1	
F33	7.02.16.591	Alternative adjusting dial	1	1	
F34	7.02.18.016	Washer	1	1	
F35	7.02.15.053	Screw	1	1	GB/T70.1 M5×12
F36	7.02.12.367	Alternative adjusting air cylinder connecting block	1	1	
F37	7.02.15.1121	Screw	4	4	M4x30
F38	7.02.19.180	Alternative adjusting air cylinder	1	1	SDA20-10B
F39	7.02.19.170	Air tube joint	1	1	PC4-M5
F40	7.02.19.171	Antisqueak	2	2	BSL-M5
F41	7.02.16.255	Air tube joint	1	1	PL4-M5
F42	7.02.15.745	Screw	3	3	GB/T70.1 M5×45
F43	7.02.19.165	Presser foot lifting air cylinder	1	1	CQ2B25-25D
F44	7.02.15.053	Screw	2	2	GB/T70.1 M5×12
F45	7.02.11.677	Air cylinder fixed plate	1	1	
F46	7.02.15.067	Nut	1	1	GB/T6170 M6
F47	7.02.06.499	Presser foot lifting air cylinder joint	1	1	

## G. Needle bar and thread take-up lever mechanism



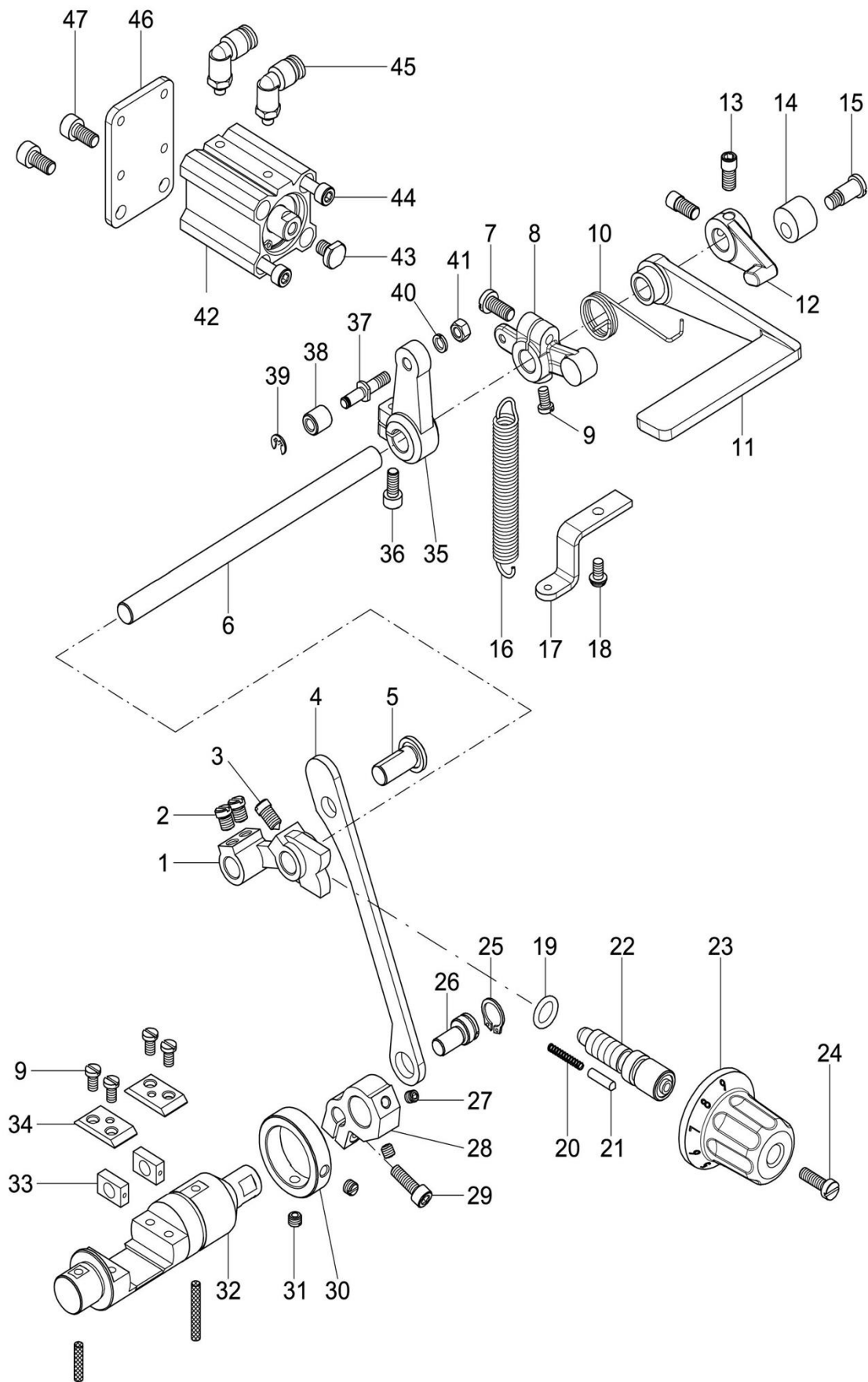


## G. Needle bar and thread take-up lever mechanism

Fig. No.	Part No.	Name	1-needle	2-needle	Remark
G01	7.02.16.043	Oil wick	1	1	
G02	7.02.10.045	Needle bar vibrating bracket pin	1	1	
G03	7.02.15.217	Screw	1	1	SM15/64(28)×9
G04	7.02.15.457	Screw	1	1	SM9/32(28)×31
G05	7.02.10.018	Thread take-up lever hinge shaft	1	1	
G06	7.02.15.128	Screw	1	1	SM15/64(28)×12
G07	7.02.05.041	Thread take-up lever	1	1	
G08	7.02.05.042	Slide lever	1	1	
G09	7.02.16.043	Oil wick	1	1	
G10	7.02.10.019	Thread take-up crank link shaft	1	1	
G11	7.02.16.043	Oil wick	1	1	
G12	7.02.05.043	Needle bar thread take-up link	1	1	
G13	7.02.11.045	Washer	2	2	
G14	7.02.15.234	Screw	6	6	SM3/32(56)×4.5
G15	7.02.16.043	Oil wick	1	1	
G16	7.02.02.035	Needle bar clamping head	1	1	
G17	7.02.15.231	Screw	1	1	SM9/64(40)×10
G18	7.02.13.021	Needle bar vibrating bracket	1	1	
G19	7.02.15.1109	Screw	1	1	M3
G20	7.02.14.034	Needle bar thread guide ring	1	1	
G21	7.02.15.1140	Screw	1	1	
G22	7.02.03.586	Needle bar	1	1	
G23	7.02.21.072	Needle	1	1	DP×17×23
G24	7.02.02.042	Inner presser foot	1		
G25	7.02.15.250	Screw	1	1	
G26	7.02.03.042	Inner press lever	1	1	
G27	7.02.10.635	Press spring post rod	1	1	
G28	7.02.17.044	Inner presser foot spring	1	1	
G29	7.02.15.260	Screw	1	1	SM11/64(40)×12.5
G30	7.02.18.057	Washer	1	1	ø4.6×ø8×1
G31	7.02.12.031	Needle bar guide block	1	1	
G32	7.02.05.044	Link	1	1	
G33	7.02.12.032	Slide block guide rail	1	1	
G34	7.02.15.147	Screw	2	2	SM11/64(40)×15
G35	7.02.12.033	Needle bar vibrating block	1	1	
G36	7.02.15.254	Screw	1	1	SM15/64(28)×10
G37	7.02.06.020	Needle bar vibrating bracket crank(left)	1	1	
G38	7.02.10.012	Presser foot vibrating crank pin(left)	1	1	
G39	7.02.15.115	Screw	2	2	SM11/64(40)×5.5
G40	7.02.09.016	Washer	1	1	
G41	7.02.08.073	Needle bar vibrating shaft bushing	2	2	
G42	7.02.03.556	Needle bar vibrating crank shaft	1	1	
G43	7.02.15.221	Presser foot crank screw(right)	1	1	SM1/4(24)×17.5
G44	7.02.06.027	Needle bar vibrating crank (right)	1	1	
G45	7.02.15.265	Nut	1	1	SM5/16(24)
G46	7.02.05.051	Needle bar vibrating link	1	1	
G47	7.02.15.236	Screw	1	1	

## H. Stitch regulator mechanism

---

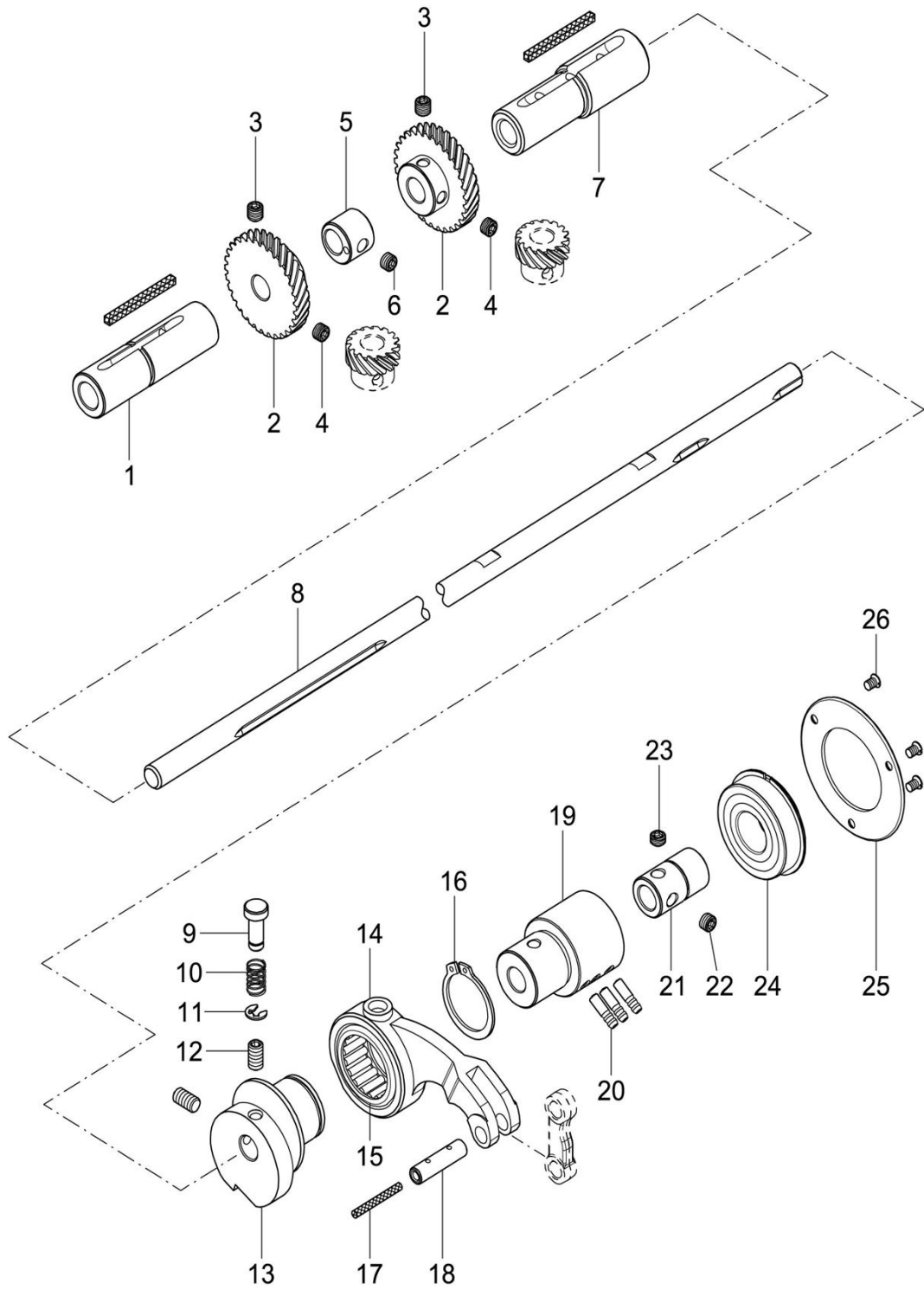


## H. Stitch regulator mechanism

Fig. No.	Part No.	Name	1-needle	2-needle	Remark
H01	7.02.06.028	Stitch length adjusting crank	1	1	
H02	7.02.15.237	Screw	2	2	SM15/64(28)×6.5
H03	7.02.15.238	Screw	1	1	SM15/64(28)×10.5
H04	7.02.03.045	Backstitch operating link	1	1	
H05	7.02.10.051	Feed shaft crank hinge shaft	1	1	
H06	7.02.03.557	Backstitch operating lever	1	1	
H07	7.02.15.239	Screw	1	1	SM15/64(28)×13
H08	7.02.06.021	Backstitch operating crank	1	1	
H09	7.02.15.121	Screw	5	5	SM11/64(40)×8
H10	7.02.17.224	Backstitch lever reset spring	1	1	
H11	7.02.05.16101	Backstitch operating lever	1	1	
H12	7.02.06.10701	Backstitch lever pulling lever block	1	1	
H13	7.02.15.219	Screw	2	2	SM15/64(28)×10.5
H14	7.02.16.121	Backstitch lever stopper rubber ring	1	1	
H15	7.02.15.634	Screw	1	1	
H16	7.02.17.045	Backstitch operating crank spring	1	1	
H17	7.02.12.034	Spring bracket	1	1	
H18	7.02.15.160	Screw	1	1	SM11/64(40)×8
H19	7.02.16.142	Stitch length adjusting screw bolt O type ring	1	1	
H20	7.02.17.531	Retention pin spring	1	1	
H21	7.02.10.052	Retention pin	1	1	
H22	7.02.05.046	Stitch length adjusting screw bolt	1	1	
H23	7.02.16.592	Stitch length adjusting knob	1	1	
H24	7.02.15.132	Screw	1	1	SM3/16(28)×18
H25	7.02.18.023	Elastic retaining ring	1	1	GB/T 894.1 12
H26	7.02.10.626	Eccentric shaft	1	1	
H27	7.02.15.056	Screw	2	2	GB/T77 M5×5
H28	7.02.06.029	Backstitch operating crank(lower)	1	1	
H29	7.02.15.058	Screw	1	1	GB/T70.1 M5×16
H30	7.02.09.017	Retaining ring	1	1	
H31	7.02.15.145	Screw	2	2	SM15/64(28)×4.5
H32	7.02.13.022	Backstitch table	1	1	
H33	7.02.12.035	Slide block	2	2	
H34	7.02.12.036	Guiding direction plate	2	2	
H35	7.02.06.505	Pneumatic backstitch crank	1	1	
H36	7.02.15.543	Screw	1	1	M5×14
H37	7.02.10.146	Presser foot lifting crank pin	1	1	
H38	7.02.12.081	Slide post	1	1	
H39	7.02.18.031	Splite retaining ring	1	1	GB/T 896 4
H40	7.02.18.055	Spring washer	1	1	GB/T 93 5
H41	7.02.15.068	Nut	1	1	GB/T6170 M5
H42	7.02.19.165	Backstitch air cylinder	1	1	CQ2B25-25D
H43	7.02.06.494	Backstitch air cylinder joint	1	1	
H44	7.02.15.745	Screw	2	2	GB/T70.1 M5×45
H45	7.02.16.255	Air tube joint	2	2	PL4-M5
H46	7.02.11.674	Backstitch air cylinder fixed plate	1	1	
H47	7.02.15.594	Screw	2	2	GB/T70.1 M6×12

# I. Lower shaft mechanism

---

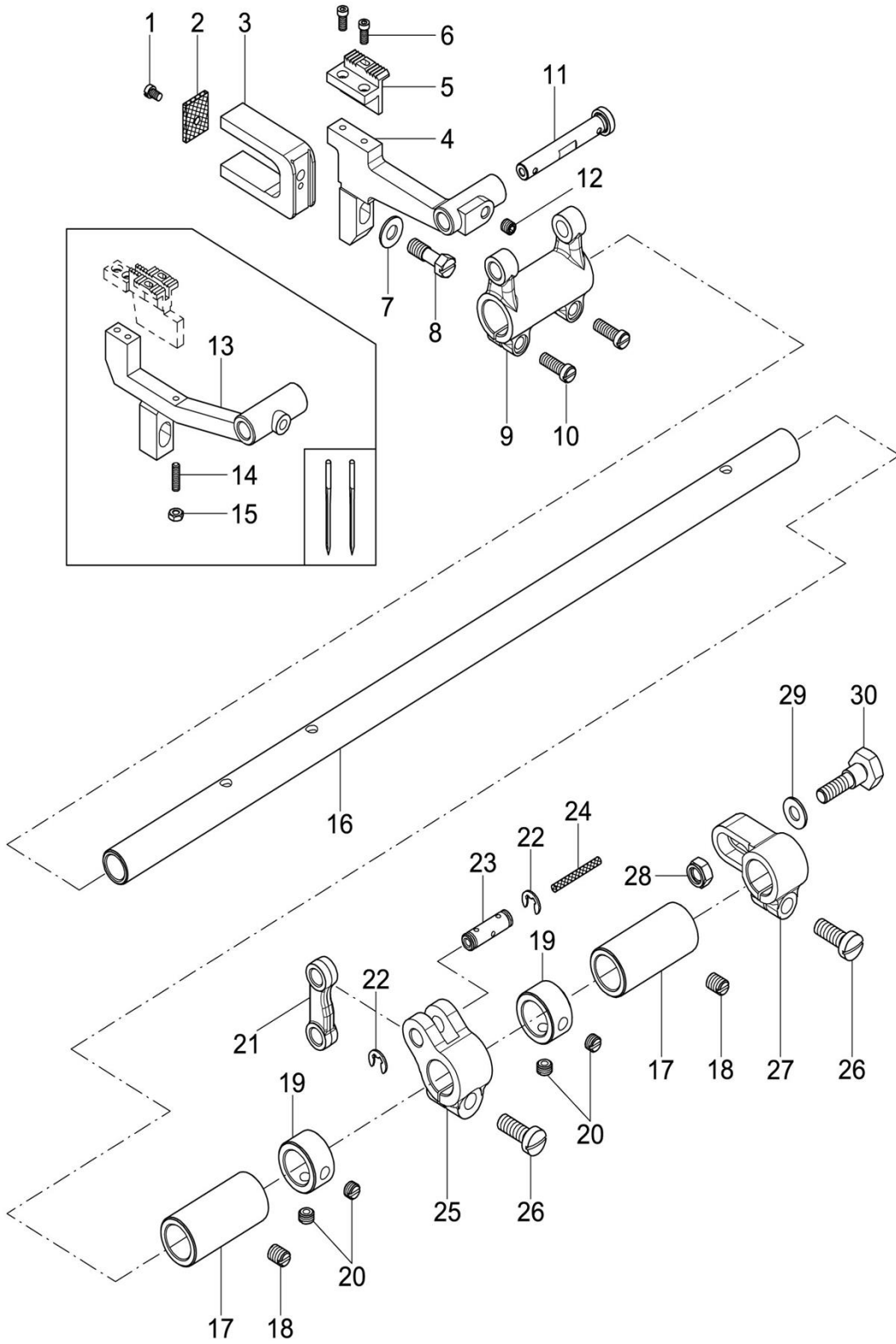


## I. Lower shaft mechanism

Fig. No.	Part No.	Name	1-needle	2-needle	Remark
I01	7.02.08.074	Lower shaft bushing(left)	1	1	
I02	7.02.07.031	Hook table gear(big)	1	2	
I03	7.02.15.248	Screw	1	2	SM1/4(40)×6
I04	7.02.15.249	Screw	1	2	SM1/4(40)×5.5
I05	7.02.06.506	Lift teeth cam	1		
I05	7.02.06.022	Lift teeth cam		1	
I06	7.02.15.991	Screw	2		M6(0.75)×6
I06	7.02.15.249	Screw		1	
I07	7.02.08.075	Lower shaft bushing(right)	1		
I07	7.02.08.628	Lower shaft bushing(right)		1	
I08	7.02.03.558	Lower shaft	1	1	
I09	7.02.18.039	Splite retaining ring	1	1	GB/T 896 5
I10	7.02.17.046	Reset spring	1	1	
I11	7.02.10.047	Reset button	1	1	
I12	7.02.15.1158	Screw	2	2	SM15/64(28)×12
I13	7.02.06.023	Feed cam	1	1	
I14	7.02.05.047	Feed cam link	1	1	
I15	7.02.04.022	Bearing	1	1	HK 2616
I16	7.02.18.053	Elastic retaining ring	1	1	GB/T894.1 26
I17	7.02.16.043	Oil wick	1	1	
I18	7.02.10.048	Feed cam link pin	1	1	
I19	7.02.08.625	Lower shaft bushing(middle)	1	1	
I20	7.02.16.049	Copper oil tube	5	5	
I21	7.02.08.077	Bushing	1	1	
I22	7.02.15.249	Screw	1	1	SM1/4(40)×5.5
I23	7.02.15.247	Screw	1	1	SM1/4(40)×4
I24	7.02.04.013	Ball bearing	1	1	
I25	7.02.11.046	Stop plate	1	1	
I26	7.02.15.605	Screw	3	3	SM9/64(40)×6

# J. Feed rock shaft mechanism

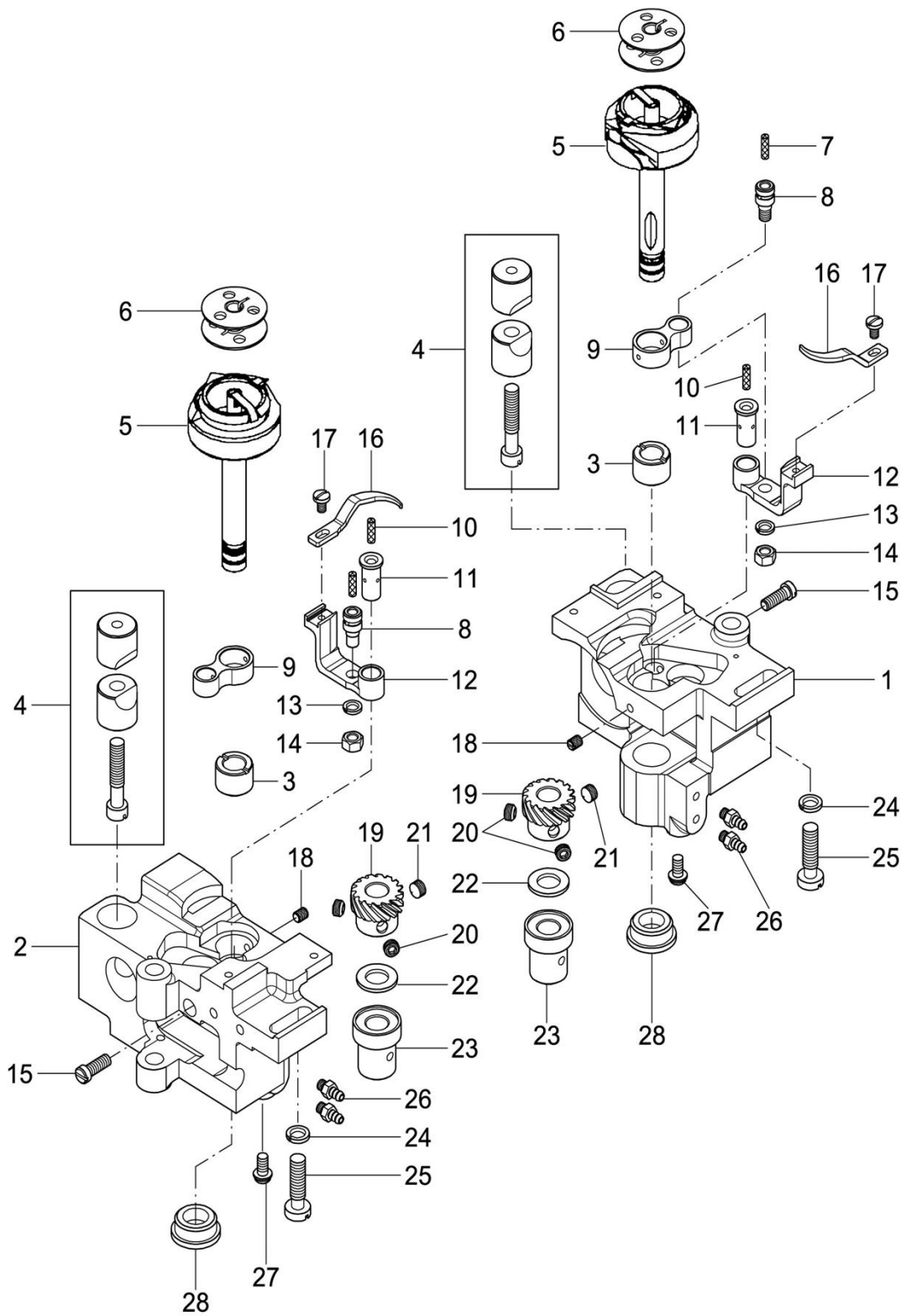
---



## J. Feed rock shaft mechanism

Fig. No.	Part No.	Name	1-needle	2-needle	Remark
J01	7.02.15.118	Screw	1	1	SM1/8(44)×4.5
J02	7.02.16.452	Oil felt	1	1	
J03	7.02.05.049	Lift teeth crank fork	1	1	
J04	7.02.13.024	Teeth bracket	1		
J05	7.02.02.690	Feed dog	1		
J06	7.02.15.257	Screw	2	2	SM1/8(40)×7
J07	7.02.18.049	Washer	1	1	
J08	7.02.15.262	Screw	1	1	SM15/64(28)×17
J09	7.02.06.026	Teeth bracket crank	1	1	
J10	7.02.15.243	Screw	2	2	SM3/16(28)×15.5
J11	7.02.10.050	Teeth bracket crank shaft	1	1	
J12	7.02.15.056	Screw	1	1	GB/T 77 M5×5
J13	7.02.13.023	Teeth bracket		1	
J14	7.02.15.258	Screw		1	M3×16
J15	7.02.15.266	Nut		1	GB/T 6170 M3
J16	7.02.03.559	Feed shaft	1	1	
J17	7.02.08.078	Feed bushing(left)	2	2	
J18	7.02.15.216	Screw	2	2	SM1/4(24)×10
J19	7.02.09.014	Collar	2	2	
J20	7.02.15.122	Screw	4	4	SM1/4(40)×4
J21	7.02.05.048	Link	1	1	
J22	7.02.18.039	Splite retaining ring	1	1	GB/T 896 5
J23	7.02.10.049	Link pin	1	1	
J24	7.02.16.043	Oil wick	1	1	
J25	7.02.06.025	Feed crank(middle)	1	1	
J26	7.02.15.221	Screw	2	2	SM1/4(24)×17.5
J27	7.02.06.024	Feed crank(right)	1	1	
J28	7.02.15.263	Adjusting nut	1	1	
J29	7.02.18.049	Washer	1	1	
J30	7.02.15.261	Screw	1	1	

# K. Hook mechanism

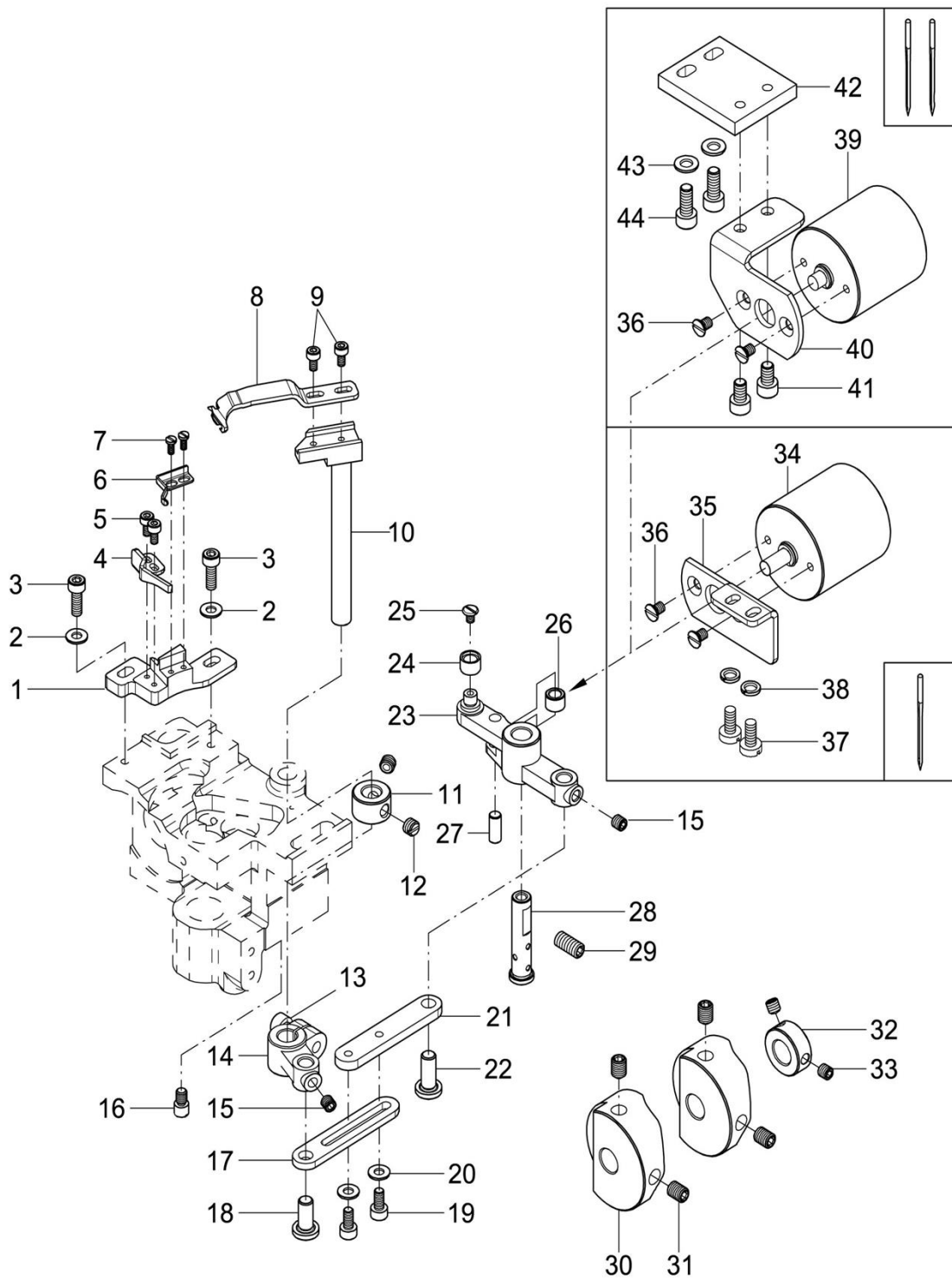




## K. Hook mechanism

Fig. No.	Part No.	Name	1-needle	2-needle	Remark
K01	7.02.13.531	Hook saddle(right)	1		
K02	7.02.13.534	Hook saddle(left)		1	
K03	7.02.08.622	Hook shaft bushing(upper)	1	2	
K04	7.02.01.032	Hook saddle lock block assy.	1	2	
K05	7.02.02.680	Hook	1	2	
K06	7.02.21.570	Bobbin	1	2	
K07	7.02.16.043	Oil wick	1	2	
K08	7.02.10.055	Screw	1	2	
K09	7.02.05.052	Support bracket link	1	2	
K10	7.02.16.043	Oil wick	1	2	
K11	7.02.03.564	Thread wiper claw support bracket shaft	1	2	
K12	7.02.02.051	Thread wiper claw support bracket	1	2	
K13	7.02.18.055	Spring washer	1	2	GB/T 93 5
K14	7.02.15.068	Nut	1	2	GB/T6170 M5
K15	7.02.15.243	Screw	1	2	SM3/16(28)×15.5
K16	7.02.02.684	Hook thread wiper claw	1	2	
K17	7.02.15.212	Screw	1	2	SM9/64(40)×6
K18	7.02.15.115	Screw	1	2	SM11/64(40)×5.5
K19	7.02.07.030	Hook saddle gear (small)	1	2	
K20	7.02.15.247	Screw	2	4	SM1/4(40)×4
K21	7.02.15.249	Screw	1	2	SM1/4(40)×5.5
K22	7.02.18.054	Washer	1	2	
K23	7.02.08.623	Hokk shaft bushing(lower)	1	2	
K24	7.02.18.058	Spring washer	1	2	GB/T 93 6
K25	7.02.15.245	Screw	1	2	SM1/4(24)×23
K26	7.02.16.594	Oil tube joint	2	4	
K27	7.02.15.160	Screw	1	2	SM11/64(40)×8
K28	7.02.16.042	Rubber plug	1	2	

# L. Thread trimming mechanism (1)

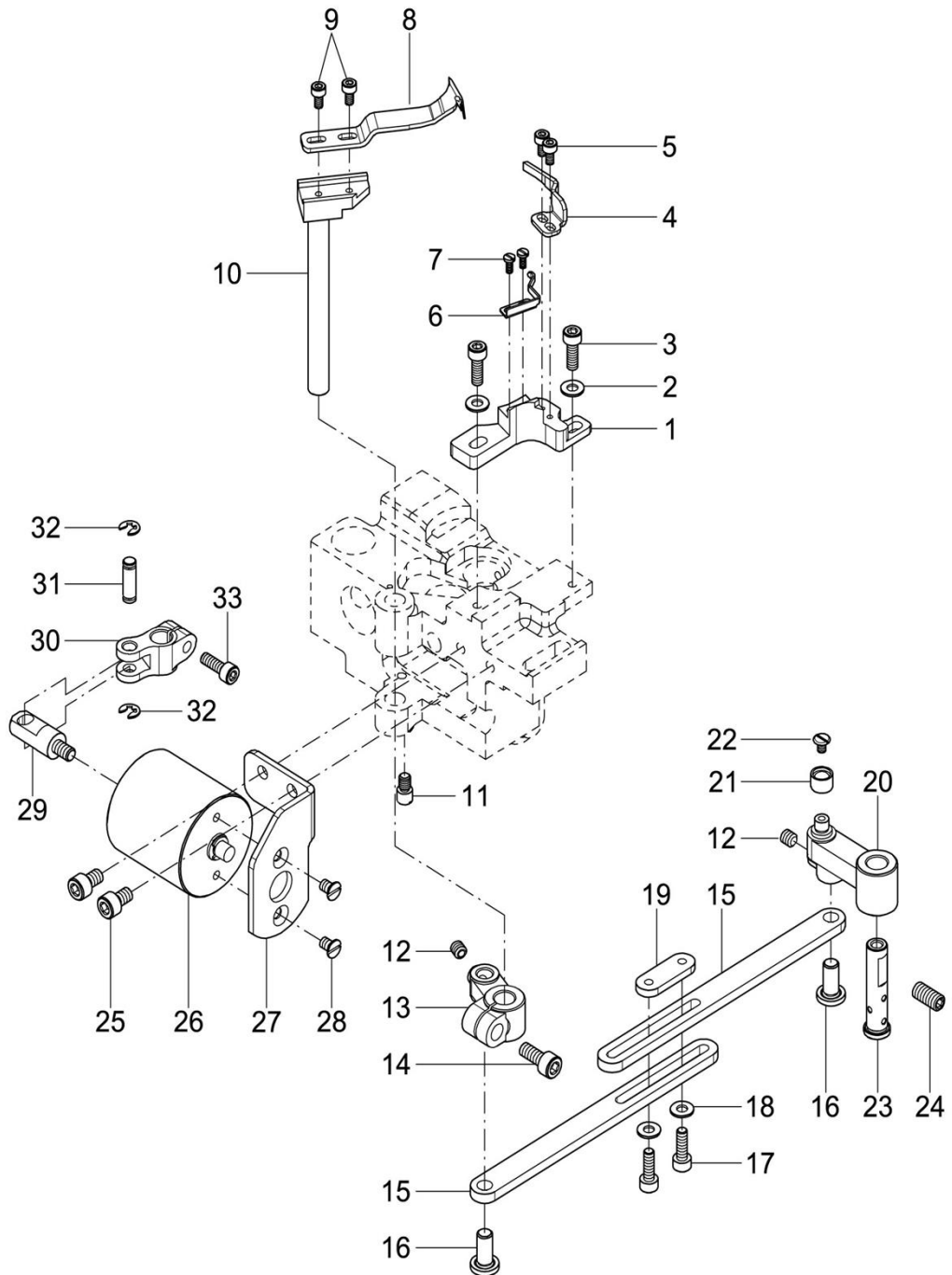


## L. Thread trimming mechanism (1)

Fig. No.	Part No.	Name	1-needle	2-needle	Remark
L01	7.02.13.532	Fixed seat	1	1	
L02	7.02.18.071	Washer	2	2	GB/T 97.1 4
L03	7.02.15.577	Screw	2	2	GB/T70.1 M4×12
L04	7.02.20.120	Fixed knife	1	1	
L05	7.02.15.800	Screw	2	2	GB/T70.1 M3×6
L06	7.02.20.122	Thread clamping plate	1	1	
L07	7.02.15.1123	Screw	2	2	SM3/32(56)×5.5
L08	7.02.20.121	Movable knife	1	1	
L09	7.02.15.800	Screw	2	2	GB/T70.1 M3×6
L10	7.02.03.562	Movable knife shaft	1	1	
L11	7.02.09.015	Collar	1	1	
L12	7.02.15.145	Screw	2	2	SM15/64(28)×4.5
L13	7.02.15.053	Screw	1	1	GB/T70.1 M5×12
L14	7.02.06.495	Thread trimming crank	1	1	
L15	7.02.15.056	Screw	2	2	GB/T 77 M5×5
L16	7.02.15.632	Screw	1	1	
L17	7.02.05.615	Thread trimming link(left)	1		
L17	7.02.06.510	Thread trimming link(left)		1	
L18	7.02.10.567	Link pin	1	1	
L19	7.02.15.555	Screw	2	2	GB/T70.1 M4×8
L20	7.02.18.071	Washer	2	2	GB/T 97.1 4
L21	7.02.05.614	Thread trimming link(right)	1	1	
L22	7.02.10.369	Link pin(left)	1	1	
L23	7.02.06.493	Thread trimming vibrating crank	1	1	
L24	7.02.08.201	Thread trimming roller post	1	1	
L25	7.02.15.618	Screw	1	1	
L26	7.02.12.334	Roller post	1	1	
L27	7.02.10.565	Roller post pin 2	1	1	
L28	7.02.10.045	Needle bar vibrating bracket pin	1	1	
L29	7.02.15.1158	Screw	1	1	SM15/64(28)×12
L30	7.02.06.498	Thread trimming cam	1		
L30	7.02.06.511	Thread trimming cam		2	
L31	7.02.15.050	Screw	2	4	M6(0.75)×8
L32	7.02.09.130	Collar	1	1	
L33	7.02.15.056	Screw	2	2	GB/T 77 M5×5
L34	7.02.19.420	Thread trimming solenoid	1		
L35	7.02.11.678	Thread trimming solenoid fixed plate	1		
L36	7.02.15.797	Screw	2	2	
L37	7.02.15.178	Screw	2		
L38	7.02.18.055	Spring washer	2		GB/T 93 5
L39	7.02.19.523	Thread trimming solenoid		1	
L40	7.02.11.595	Thread trimming solenoid fixed plate		1	
L41	7.02.15.972	Screw		2	GB/T70.1 M5×8
L42	7.02.11.696	Thread trimming solenoid fixed plate		1	
L43	7.02.18.016	Washer		2	
L44	7.02.15.053	Screw		2	GB/T70.1 M5×12

## M. Thread trimming mechanism (2)

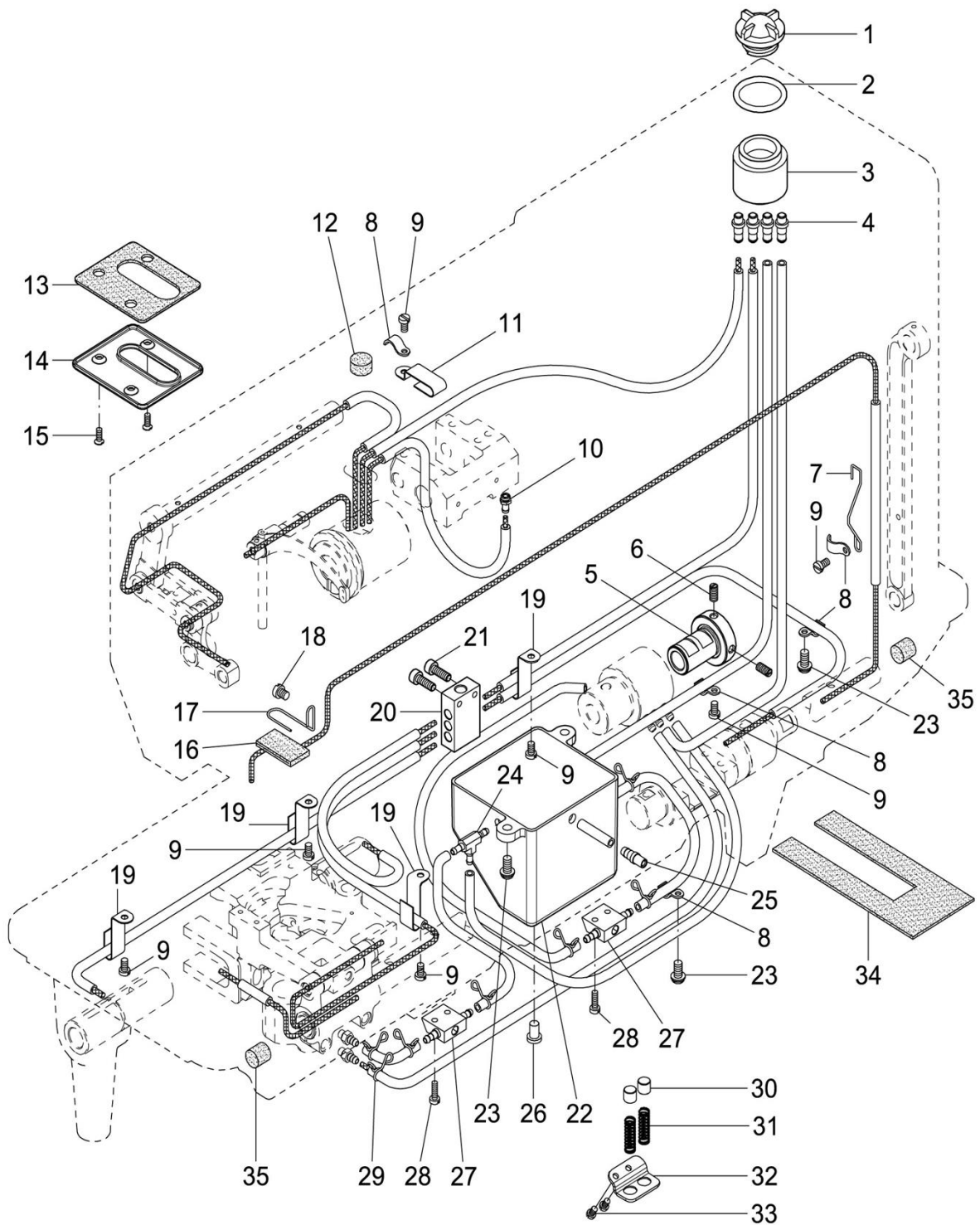
---



## M. Thread trimming mechanism (2)

Fig. No.	Part No.	Name	1-needle	2-needle	Remark
M01	7.02.13.533	Fixed knife seat		1	
M02	7.02.18.071	Washer		2	GB/T 97.1 4
M03	7.02.15.577	Screw		2	GB/T70.1 M4×12
M04	7.02.20.120	Fixed knife		1	
M05	7.02.15.976	Screw		2	GB/T70.1 M3×6
M06	7.02.20.122	Thread clamp plate		1	
M07	7.02.15.1123	Screw		2	SM3/32(56)×5.5
M08	7.02.20.121	Movable knife		1	
M09	7.02.15.976	Screw		2	GB/T70.1 M3×6
M10	7.02.03.562	Movable knife shaft		1	
M11	7.02.15.632	Screw		1	
M12	7.02.15.056	Screw		2	GB/T80 M5×5
M13	7.02.06.495	Thread trimming crank		1	
M14	7.02.15.053	Screw		1	GB/T70.1 M5×12
M15	7.02.06.507	Thread trimming link(long)		2	
M16	7.02.10.567	Link pin		2	
M17	7.02.15.577	Screw		2	GB/T70.1 M4×12
M18	7.02.18.071	Washer		2	GB/T 97.1 4
M19	7.02.06.509	Thread trimming link(short)		1	
M20	7.02.06.508	Thread trimming vibrating crank		1	
M21	7.02.08.201	Thread trimming roller post		1	
M22	7.02.15.618	Screw		1	
M23	7.02.10.045	Needle bar vibrating bracket pin		1	
M24	7.02.15.1158	Screw		1	SM15/64(28)×12
M25	7.02.15.972	Screw		2	GB/T70.1 M5×8
M26	7.02.19.523	Thread trimming solenoid		1	
M27	7.02.11.595	Thread trimming solenoid fixed plate		1	
M28	7.02.15.797	Screw		2	
M29	7.02.06.512	Thread trimming solenoid joint		1	
M30	7.02.06.513	Thread trimming solenoid crank		1	
M31	7.02.10.304	Crank pin		1	
M32	7.02.18.031	Splite retaining ring		2	GB/T 896 4
M33	7.02.15.577	Screw		1	GB/T70.1 M4×12

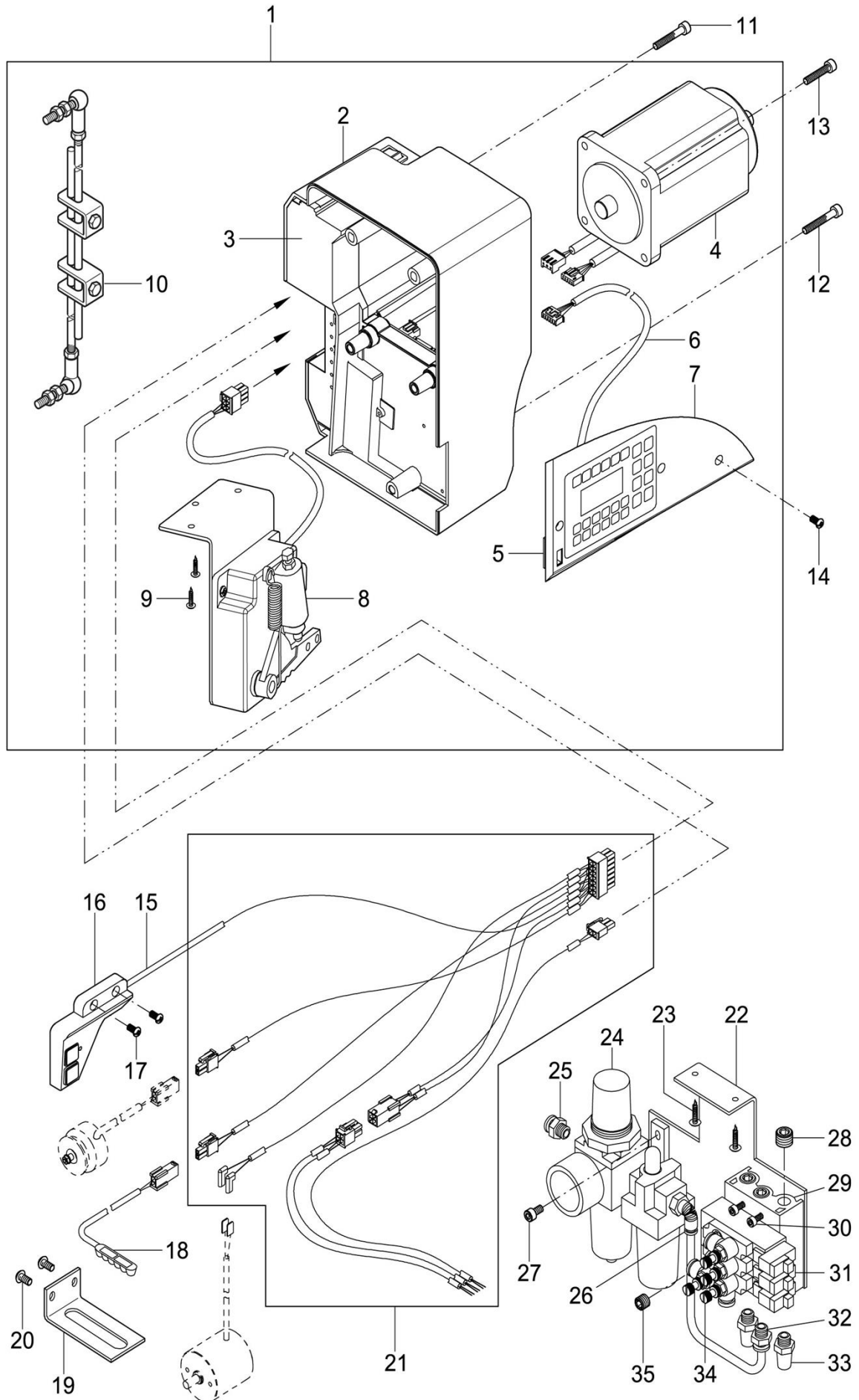
# N. Oil lubrication mechanism



## N. Oil lubrication mechanism

Fig. No.	Part No.	Name	1-needle	2-needle	Remark
N01	7.02.01.111	Oil window assy.	1	1	
N02	7.02.16.607	O type sealing ring	2	2	
N03	7.02.16.593	Oil cup	1	1	
N04	7.02.16.597	Oil tube joint	4	4	
N05	7.02.08.626	Oil supply bushing	1	1	
N06	7.02.15.251	Screw	2	2	SM11/64(40)×9
N07	7.02.17.056	Oil tube clamp	1	1	
N08	7.02.17.029	Oil tube fixed clamp	5	5	
N09	7.02.15.250	Screw	7	7	SM9/64(40)×6
N10	7.02.16.182	Oil tube joint	1	1	
N11	7.02.17.050	Oil tube clamp	1	1	
N12	7.02.16.450	Oil felt	2	2	
N13	7.02.16.601	Oil receiver felt	1	1	
N14	7.02.11.679	Oil receiver plate	1	1	
N15	7.02.15.390	Screw	2	2	
N16	7.02.16.053	Oil felt	1	1	
N17	7.02.17.051	Oil tube clamp	1	1	
N18	7.02.15.284	Screw	1	1	
N19	7.02.17.050	Oil tube clamp	4	4	
N20	7.02.16.589	Oil flow divider	1	1	
N21	7.02.15.424	Screw	2	2	GB/T65 M4×12
N22	7.02.16.595	Oil box	1	1	
N23	7.02.15.160	Screw	2	2	SM11/64(40)×8
N24	7.02.16.250	Three-way oil tube joint	1	1	
N25	7.02.16.059	Oil nozzle	1	1	
N26	7.02.16.028	Oil pad	1	1	
N27	7.02.16.596	Oil flow regulating valve	2	2	
N28	7.02.15.802	Screw	2	2	
N29	7.02.18.441	Oil tube clamp	7	7	
N30	7.02.10.056	Post plug	2	2	
N31	7.02.17.055	Post plug spring	2	2	
N32	7.02.11.669	Post plug guard plate	1	1	
N33	7.02.15.118	Screw	2	2	SM1/8(44)×4.5
N34	7.02.16.602	Backstitch table oil felt	1	1	
N35	7.02.16.450	Oil felt	2	2	

# O. Electrical mechanism

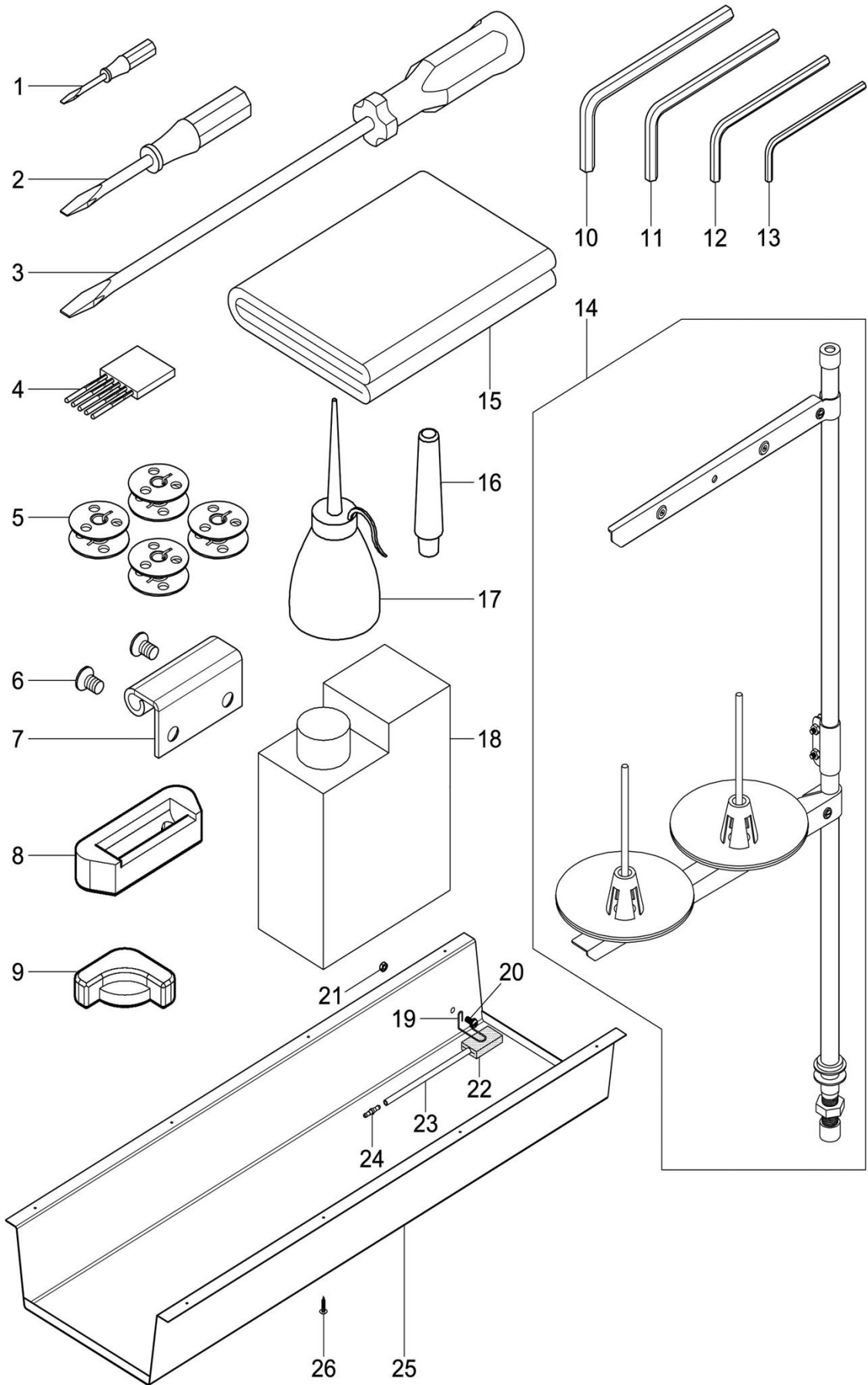




## O. Electrical mechanism

Fig. No.	Part No.	Name	1-needle	2-needle	Remark
O01	7.02.19.471	Electronic control system	1	1	
O02	7.02.16.600	Electronic control box cover	1	1	
O03	7.02.19.47101	Control box	1	1	
O04	7.02.19.47103	Main shaft motor	1	1	
O05	7.02.19.47102	Panel	1	1	
O06	7.02.19.47106	Panel connecting wire	1	1	
O07	7.02.16.599	Panel cover	1	1	
O08	7.02.19.47105	Speed control padel	1	1	
O09	7.02.19.47107	Screw	3	3	
O10	7.02.19.47108	Pulling lever	1	1	
O11	7.02.15.1126	Screw	4	4	GB/T70.1 M5x35
O12	7.02.15.745	Screw(long)	1	1	GB/T70.1 M5x45
O13	7.02.15.731	Screw	4	4	GB/T70.1 M5x25
O14	7.02.15.176	Screw	3	3	SM11/64(40)×8
O15	7.02.19.472	Backstitch switch assy.	1	1	
O16	7.02.16.598	Switch box	1	1	
O17	7.02.15.176	Screw	2	2	SM11/64(40)×8
O18	7.02.19.474	LED light	1	1	
O19	7.02.11.699	Fixed plate	1	1	
O20	7.02.15.960	Screw	2	2	M5×10
O21	7.02.19.473	Wire assy.	1	1	
O22	7.02.11.30201	Solenoid valve mounting plate	1	1	
O23	7.02.21.033	Wooden screw	2	2	
O24	7.02.19.130	Air source processer	1	1	AC2010-02
O25	7.02.19.520	Air tube joint	1	1	PC8-02
O26	7.02.19.521	Air tube joint	1	1	PL6-02
O27	7.02.15.803	Screw	2	2	GB/T70.1 M5x10
O28	7.02.19.134	Pad	3	3	BD-02
O29	7.02.19.138	Accordant junction plate	1	1	100M-3F
O30	7.02.15.799	Screw	2	2	GB/T70.1 M4x25
O31	7.02.19.125	Solenoid valve	3	3	4V110-06
O32	7.02.19.133	Air tube joint	1	1	PC6-02
O33	7.02.19.136	Antisqueak	2	2	BSL-02
O34	7.02.19.476	Throttle valve	4	4	SL4-01
O35	7.02.19.181	Pad	2	2	BD-01

# P. Accessories



## P. Accessories

Fig. No.	Part No.	Name	1-needle	2-needle	Remark
P01	7.02.21.001	Screw driver (Small)	1	1	
P02	7.02.21.002	Screw driver (Middle)	1	1	
P03	7.02.21.003	Screw driver (Large)	1	1	
P04	7.02.21.072	Needle	1	1	DP×17 160/23
P05	7.02.21.570	Bobbin	4	4	
P06	7.02.15.105	Hinge screw	4	4	
P07	7.02.21.237	Casting hinge	2	2	
P08	7.02.21.079	Casting hinge rubber block	2	2	
P09	7.02.21.228	Head pad	2	2	
P10	7.02.21.100	Inner hexagon spanner 5MM	1	1	
P11	7.02.21.099	Inner hexagon spanner 4MM	1	1	
P12	7.02.21.209	Inner hexagon spanner 3MM	1	1	
P13	7.02.21.098	Inner hexagon spanner 2.5MM	1	1	
P14	7.02.21.050	Thread stand	1		
P14	7.02.21.051	Thread stand		1	
P15	7.02.21.092	Packing bag	1	1	
P16	7.02.21.077	Support post	1	1	
P17	7.02.21.474	Oil can	1	1	
P18	7.02.21.096	Big oil can	1	1	
P19	7.02.17.051	Oil tube clamp	1	1	
P20	7.02.15.160	Face cover screw	1	1	SM11/64(40)×8
P21	7.02.15.166	Nut	1	1	
P22		Oil felt	1	1	
P23	7.02.16.050	Oil tube	1	1	
P24	7.02.16.307	Oil tube clamp	1	1	
P25	7.02.21.57101	Oil receiver	1	1	
P26	7.02.21.034	Wooden screw	8	8	