



HO HSING Servo motors

As the main European distributor of Ho Hsing motors, Global supplies customers not only with a state of the art motor for every brand of sewing machine, but also with the service customers need to have maximum performance from their sewing machines. With our own Ho Hsing service department, Global can guarantee full after sales support, repair and provide you with all the information you need about the latest Ho Hsing technologies and updates.

G series:

To meet the demand for a cheaper, high quality energy saving motor with needle positioning, Ho Hsing introduced the G series that is sold all over the world for many years now. With a wide range of parameters the G series can be set to drive your machine perfectly.

Available G series models:

G40-1: 400 Watt motor body for high speed lockstitch, overlock, blind stitch and normal interlock.



G40-2: same as G40-1 but with output for PNEUMATIC presser foot lifter and needle cooling (motor run signal).

G60-1: 600 Watt motor body, because of the relative high torque the G-60 can be used on some heavier machines like light to medium weight walking foot machines.

G60-2: same as G60-1 but with output for PNEUMATIC presser foot lifter and needle cooling (motor run signal).

G60-1-NP: same as G60-1 only with speed potentiometer to limit the max. speed easily.

G75-2: same as G60-2 but with 750 Watt power (output for PNEUMATIC presser foot lifter and needle cooling / motor run signal). Not suitable for machines with a big handwheel like Global WF 9204 / 9205.

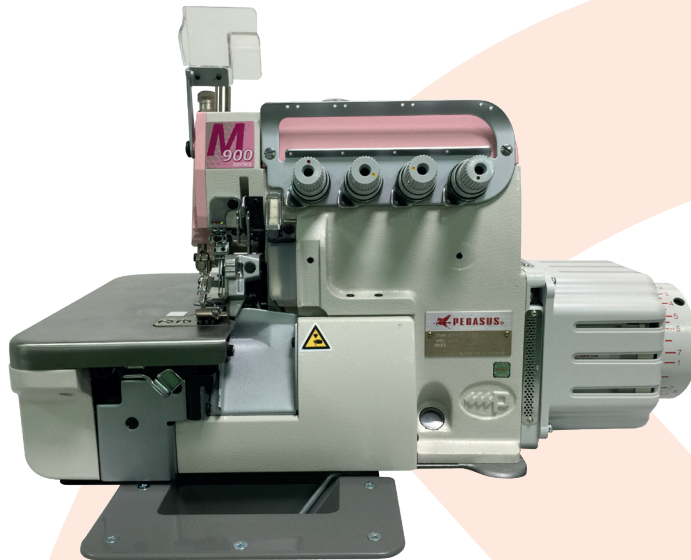
External synchro 700-1 comes as an option. G series can work with or without external synchroniser and there is no need to change any settings for this, the control box will automatically detect the external synchro and adjust itself.

G series (220 V)

Global code	Ho Hsing code	Power	Standard motor pulley	PFL (air only)	Needle cooling	Optional synchro	Connector	Rated Speed
G40100	G40-1-00-220	400 W	90 mm.	-	-	SY01GG	-	3500
G40200	G40-2-00-220	400 W	90 mm.	√	√	SY01GG	√	3500
G60100	G60-1-00-220	600 W	65 mm.	-	-	SY01GG	-	3000
G601NP	G60-1-NP-220	600 W	65 mm.	-	-	SY01GG	-	3000
G60200	G60-2-GL-220	600 W	65 mm.	√	√	SY01GG	√	3000
G70200	G75-2-GL-230	750 W	65 mm.	√	√	SY01GG	√	2000



HO HSING Servo motors



HD40 direct drive set for several models of Juki, Pegasus, Yamato overlock sewing machines:

HD40 Series is the replacement of the GD40 Series. For less vibrations and smoother running of your overlock machine, a direct drive mini motor is mounted directly on the drive shaft of your overlock machine. A separate HD40 control box is mounted under the table. A special bracket that matches your machine model is included in the set.

A presser foot can be lifted pneumatically and in combination with a photocell the HD40 series can control air suction at the beginning and at the end of sewing (air saving) and control a tape cutter.

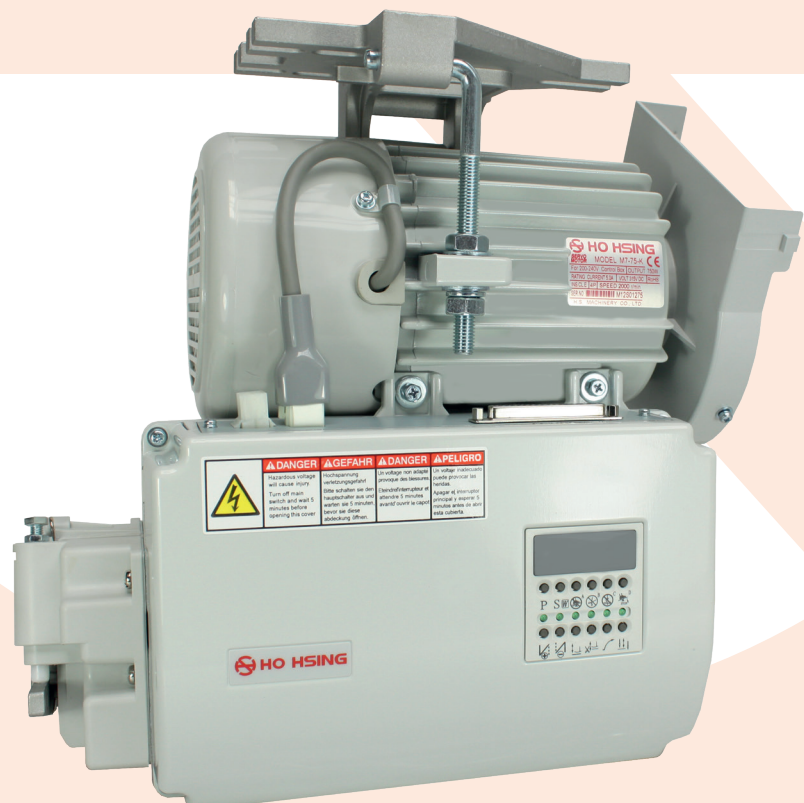
Global code	Ho Hsing code	Description	Optional Synchro	Operating panel	Connector
DDOV67	HD40-3-67-220	DD set HD40-3-67-220 for Juki MO 6700/6900 series	-	-	Included
DDOVAZ	HD40-3-AZ-220	DD set HD40-3-AZ-220 for Yamato AZ/CZ series	-	-	Included
DDOV68	HD40-3-68-220	DD set HD40-3-68-220 for Juki MO 6500/6800 series	-	-	Included
DDOVEX	HD40-3-EX-220	DD set HD40-3-EX-220 for Pegasus M900/EX series	-	-	Included

i90 series:

This motor needs no further introduction, with its high torque and solid motor body i90M series supersedes the world wide famous HVP-90 series and is suitable to drive even heavy duty machines like Global WF 9204. With its great variety of functions it can be used on a wide range of special sewing machine applications.

Available models in 550 Watt: Brother, Juki.

Available models in 750 Watt: Global, Dürkopp Adler and Mitsubishi.





HO HSING Servo motors

TD60GL-220

A simple, small and low control box with 600 Watt mini motor and external synchroniser together as a set in one carton box. Available functions: needle positioning, trimming, tension release or wiper, presser foot lift and needle cooling function. Safety switch input available. Can be used on interlock with under bed trimmer and light to medium weight walking foot applications. A separate speed control unit is supplied which is convenient for long arm machines.



TD series:

Low cost set of separate control box and 400 Watt motor body for simple automatic high speed lockstitch and chainstitch machines. A 600 Watt model is also available for light to medium weight walking foot machines and with functions like trimming, back tack and presser foot lifter, IOT- system, the TD series is suitable to be used on a variety of machine brands and models.

Operating panel T-220 is optional available.



External synchronizer is optional, TD series can work with the built in Juki, Mitsubishi or Brother synchronizer or an external synchronizer.

With standard settings for Juki and Brother high speed lockstitch these models are ready to run after installation. Connectors are original Juki, Mitsubishi and Brother type.

Global code	Model	Power	Voltage (1-phase)	Standard for
TD017W	TD-4-7W-220	400 Watt	220 – 240 V	Juki high speed lockstitch
TD01BR	TD-4-BR-220	400 Watt	220 – 240 V	Brother high speed lockstitch
TD02BR	TD-4-BR-220	600 Watt	220 – 240 V	Various models
TD0211	TD-4-11-220	600 Watt	220 – 240 V	Mitsubishi



HO HSING Servo motors

i60 and i70 series:

Separate control box that can be used in combination with a 500, 600 or 750 Watt mini motor. By choosing the correct mini motor for your sewing machine application a wide variety of sewing machine models can be equipped with this control unit (including direct drive). Operating panel C-200 (i60) or C300 (i70) is optional.

Available functions (depending on the control box model):

trimmer, wiper, tension release, presser foot lift, reverse, HP function, second stitch length, puller, material guide, photocell input, flip flop function and IOT-system.

i60 and i70 models use a separate speed control unit that can be installed in a random position under the table, therefore very convenient for long arm machines.

Available i60 models: Global, Dürkopp Adler, Brother, Juki, Mitsubishi and Pegasus.

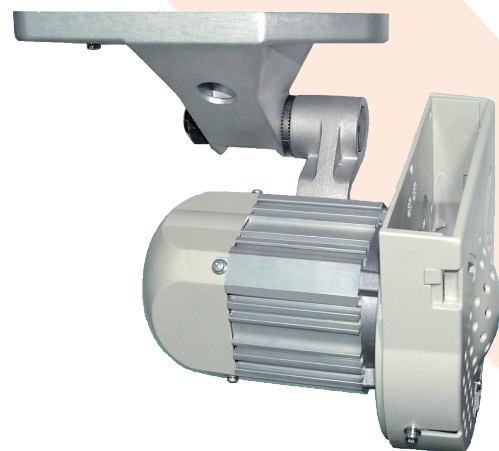
Available i70 models: Dürkopp Adler (i70L) , Global, Brother, Mitsubishi, Pegasus (i70M), Juki.



Mini motors for i60, i70 series:

i60 and i70 series work in combination with a separate mini motor. With the 500, 600 and 750 Watt models a wide range of sewing applications is covered. The mini motors for under the table are supplied including mounting bracket, V-belt cover and motor pulley.

Also a variety of direct drive models are available.



Accessories:

AC0001 - photocell NPN – adjustable sensitivity

AC0002 - standing operation pedal SOP-6H3 for Ho Hsing motor (6-pin plug incl. adapter cable for i70 series)

AC0003 - standing operation pedal SOP-8G for G series (4-pin plug)

AC0004 - synchronizer adapter set 1180-2



CERT.NO.3A1Y004-03

HO HSING Servo motors

Global code	Ho Hsing code	Description	Optional Synchro	Operating panel	Connector
DDOV67	HD40-3-67-220	DD set HD40-3-67-220 for Juki MO 6700/6900 series	-	-	Included
DDOVAZ	HD40-3-AZ-220	DD set HD40-3-AZ-220 for Yamato AZ/CZ series	-	-	Included
DDOV68	HD40-3-68-220	DD set HD40-3-68-220 for Juki MO 6500/6800 series	-	-	Included
DDOVEX	HD40-3-EX-220	DD set HD40-3-EX-220 for Pegasus M900/EX series	-	-	included
TD60GL	TD816-4-GL-220	Complete set with 600 W. mini motor and synchroniser	Incl.	-	Included
TD6000	TD816-4-GL-220	separate control box	SY0129	-	Included
TD7500	TD817-4-00-220	separate control box	SY0129	-	included
TD017W	TD1A4-4-7W-2 CE	Control unit Juki style + M10 motor 400 Watt	SY0130	OP0505	Included
TD01BR	TD1A4-4-BR-2 CE	Control unit Brother style + M10 motor 400 Watt	SY0129	OP0505	Included
TD02BR	TD1A6-4-BR-2 CE	Control unit brother style + M10 motor 600 Watt	SY0129	OP0505	Included
TD0211	TD1A6-4-11-2 CE	Control unit Mitsubishi style + M10 motor 600 Wat	SY0128	OP0505	included
i601BR	i60-4-BR-220	Brother model control box i60	SY0129	OP0405	CS9003
i60111	i60-4-11-220	Mitsubishi model control box i60	SY0128	OP0405	CS9003
i6017W	i60-4-7W-220	Juki model control box i60	SY0130	OP0405	CS037W
i60166	i60-4-66-220	Pegasus model control box i60	SY0129	OP0205	-
i601GL	i60-4-GL-220	Dürkopp Adler / Global LP 2971 AUT model control box i60	SY0129	OP0305	CS00ED
i601PP	i60-7-GP-220	Same as i60-4-GL-220 but with pre-programming	SY0129	OP0206	CS00ED
i70111	i70M-4-11-220	Mitsubishi style control box i70M	SY0128	OP0102	CS9003
i7017W	i70M-4-7W-220	Juki style control box i70M	SY0130	OP0102	CS037W
i701BR	i70M-4-BR-220	Brother style control box i70M	SY0129	OP0102	CS9003
i701ED	i70L-4-ED-220	Dürkopp Adler style control box i70L	SY0129	OP0102	CS00ED
i9027W	i90M-4-7W-220	Juki style 550 Watt i90M motor	SY0130	OP0202	CS037W
i902BR	i90M-4-BR-220	Brother style 550 Watt i90M motor	SY0129	OP0202	CS9003
i90411	i90M-4-11-220	Mitsubishi style 750 Watt i90M motor	SY0128	OP0202	CS9003
i904LU	i90M-4-LU-220	i90M motor 750 Watt for Global WF 1500 series	SY0130	OP0202	-
i904HY	i90M-4-HY-220	i90M motor 750 Watt for Global WF 1520 series	SY0130	OP0202	-
i904ED	i90M-4-ED-220	Dürkopp Adler style 750 Watt i90M motor including synchro	Incl.	OP0202	CS00ED
Global code	Ho Hsing code	Description	Rated Speed	Motor pulley	
MT0150	M1-50AB-007	Mini motor 500 W with mounting bracket and V-belt cover	5000	75	
MT0250	M1-50AB-104	Mini motor 500 W direct drive one index signal	5000	-	
MT0350	M1-50AB-007	For chainstitch. MT0150 but with pulley 85 instead of 75 mm.	5000	85	
MT0160	M1-60FE-020	Mini motor 600 W with mounting bracket and V-belt cover	3500	75	
MT0260	M1-60FE-118	Mini motor 600 W direct drive one index signal	3500	-	
MT0175	M1-75CC-012	Mini motor 750 W with mounting bracket and V-belt cover	2500	75	
MT0275	M1-75CC-108	Mini motor 750 W direct drive one index signal	2500	-	Desch
MT0375	M1-75EC-006	Mini motor 750 W with mounting bracket and V-belt cover	3500	75	
Global code	Ho Hsing code	Description	Optional Synchro	Operating panel	Connector
SY0128	600-28	External synchro Mitsubishi model for Ho Hsing -11	Rectangular 6 pin		
SY0129	600-29	External synchro Brother , Dürkopp Adler and more –BR and -ED	Round 8 pin		
SY0130	600-30	External synchro Juki model for Ho Hsing -7W and -LU	Round 7 pin		
SY01GG	700-1	External synchro for G series	Rectangular 4 pin		
Global code	Ho Hsing code	Description	Optional Synchro	Operating panel	Connector
OP0102	C-300	Operating panel for i70M and i70L series	9 pin D sub		
OP0202	C-300M	Operating panel for i90M series	Mini DIN		
OP0203	C-60M	Operating panel including parameter setting for i90M	Mini DIN		
OP0205	C-200M	Operating panel for i60-4-66-220	Mini DIN		
OP0206	TP-60	Operation Panel for PRE-PROGRAMMING i60-7-GP-220	Mini DIN		
OP0305	C-210M	Operating panel for i60-4-GL-220 only	Mini DIN		
OP0405	C-200	Operating panel for i60 model -BR, -11 and -7W	9 pin D sub		
OP0505	T-220	Operating panel only for TD01BR/7W + TD02BR/11	Mini DIN		
OP0505	T-220	Operating panel only for TD01BR/7W + TD02BR/11	Mini DIN		

Contact Global for prices or technical information of the Ho Hsing motor. Our Ho Hsing product manager Mr. Martijn Tjon-A-Njoek will gladly help you to select the perfect motor for your sewing machine application.