

# GLOBAL

PARTS BOOK

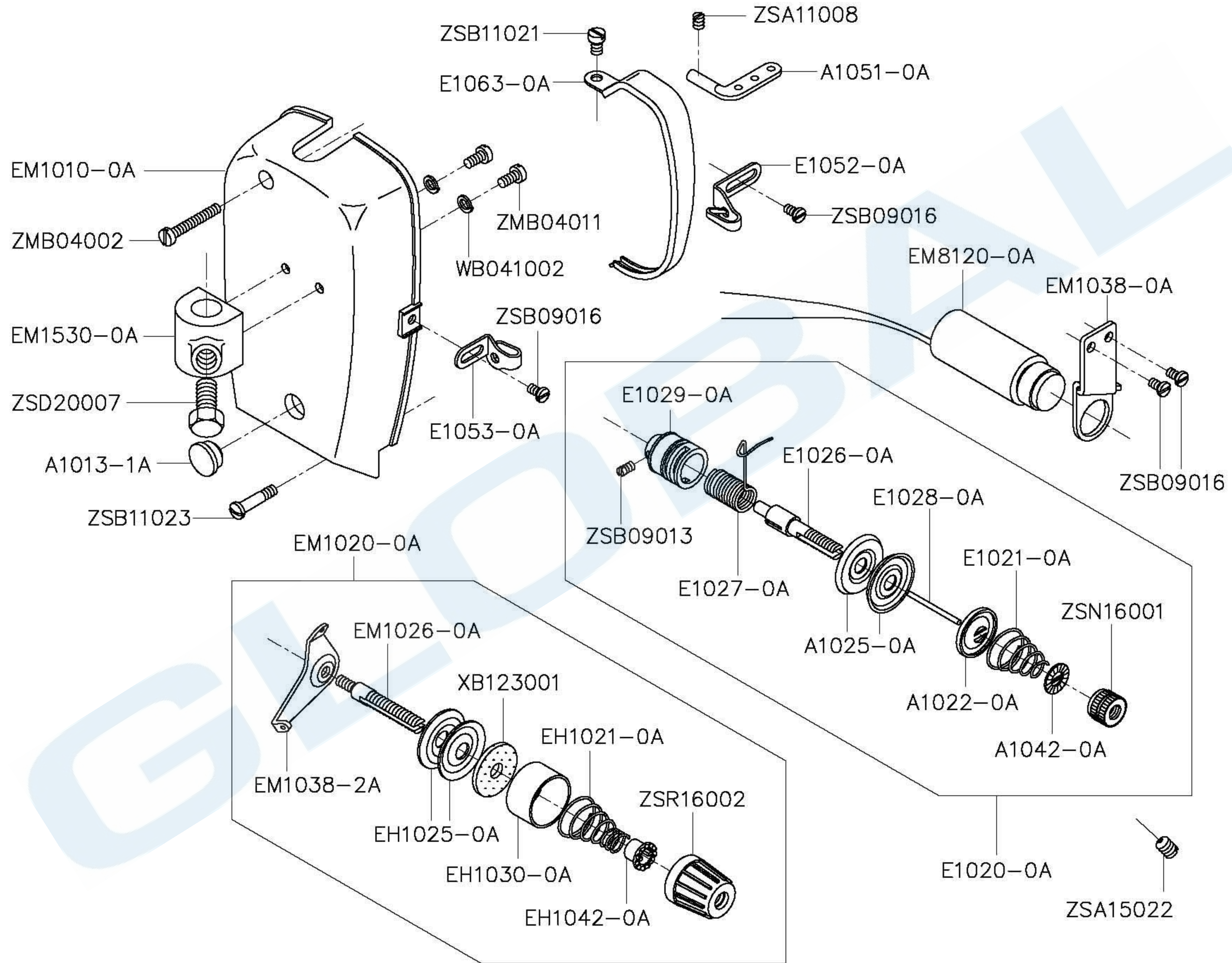
MODEL:3811

# MODEL : 3811

## INDEX

	PAGE
A ∙ ARM BED AND IT'S ACCESSORIES -----	2-3
B ∙ SEWING MECHANISM -----	4-7
C ∙ FIRST SECTION GATHERING-ADJUSTING MECHANISM ---	8-9
D ∙ PRESSER FOOT MECHANISM -----	10-11
E ∙ FEED ROTATING SHAFT MECHANISM -----	12-15
F ∙ SECOND SECTION GATHERING-ADJUSTING MECHANISM --	16-17
G ∙ ROTARY HOOK MECHANISM -----	18-19
H ∙ ZIGZAG FEED MECHANISM -----	20-21
I ∙ OIL LUBRICATION MECHANISM -----	22-23
J ∙ ACCESSORIES -----	24-27
K ∙ NUMERICAL PARTS-LIST-----	28-30

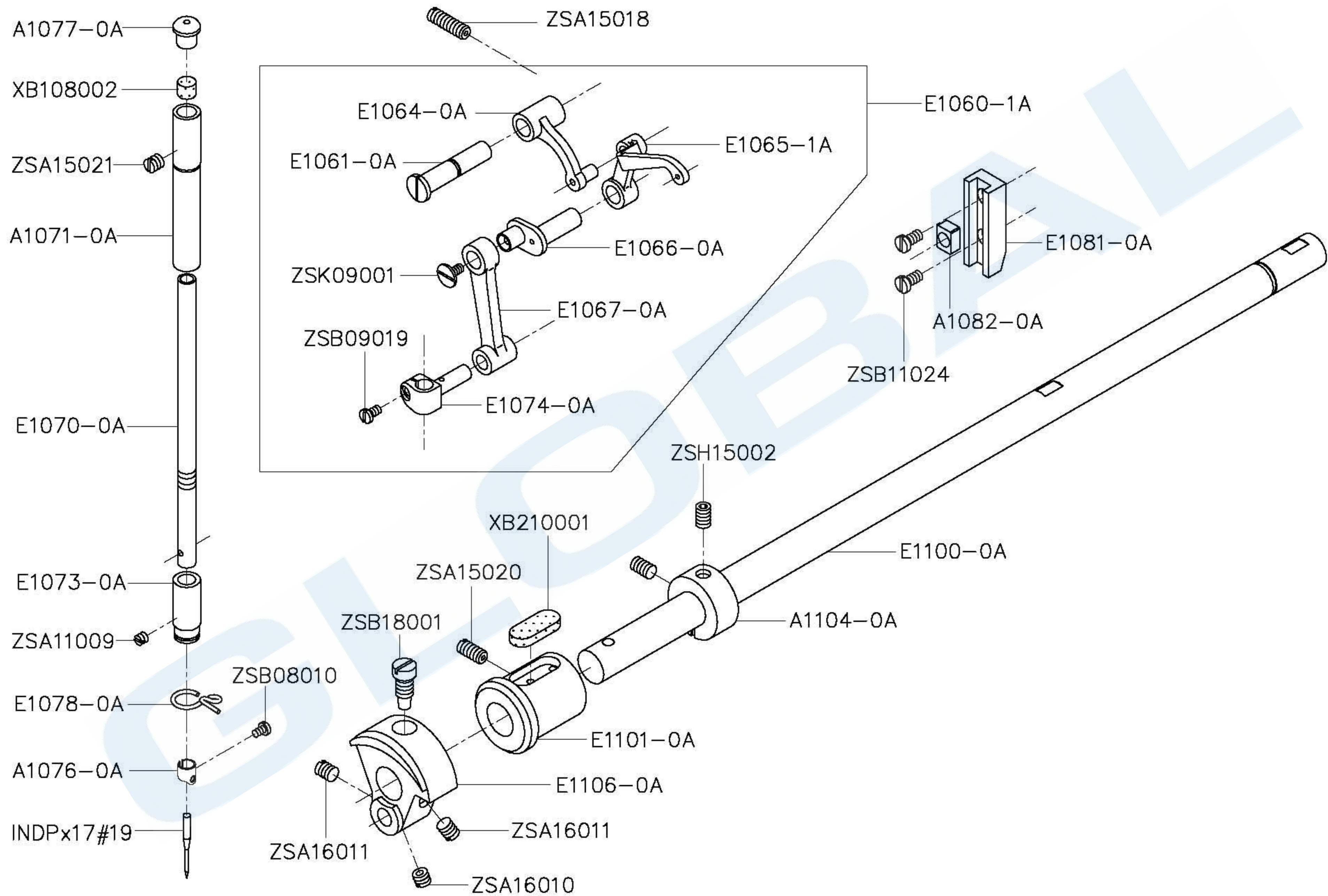
# A. ARM BED AND IT'S ACCESSORIES



## A · ARM BED AND IT'S ACCESSORIES

Part No	Name of Part	Q, TY	Part No	Name of Part	Q, TY
A1013-1A	Rubber Cork -----	1	WB041002	Washer -----	2
A1022-0A	Tension Releasing Disc -----	1	XB123001	Felt -----	1
A1025-0A	Tension Disc -----	2	ZMB04002	Screw (M4-0.7x28) -----	1
A1042-0A	Washer -----	1	ZMB04011	Screw (M4-0.7x8) -----	2
A1051-0A	Top Cover Thread Guide -----	1	ZSA11008	Screw (11/64-40x5.5) -----	1
E1020-0A	Thread Tension Regulator Assy. -----	1	ZSA15022	Screw (15/64-28x8) -----	1
E1021-0A	Tension Spring -----	1	ZSB09013	Screw (9/64-40x4) -----	1
E1026-0A	Thread Tension Stud -----	1	ZSB09016	Screw (9/64-40x6) -----	4
E1027-0A	Thread Take-up Spring -----	1	ZSB11021	Screw (11/64-40x5.5) -----	1
E1028-0A	Tension Releasing Pin -----	1	ZSB11023	Screw (11/64-40x20) -----	1
E1029-0A	Thread Tension Regulator Bushing -----	1	ZSD20007	Screw (5/16-18x16) -----	1
E1052-0A	Arm Thread Guide -----	1	ZSN16001	Nut -----	1
E1053-0A	Arm Thread Guide -----	1	ZSR16002	Nut -----	1
E1063-0A	Thread Take-up Cover -----	1			
EH1021-0A	Tension Spring -----	1			
EH1025-0A	Tension Disc -----	2			
EH1030-0A	Disc Cover -----	1			
EH1042-0A	Adjusting Ratchet -----	1			
EM1010-0A	Face Plate -----	1			
EM1020-0A	Thread Tension Regulator Assy. -----	1			
EM1026-0A	Thread Tension Stud -----	1			
EM1038-0A	Hinge Stud -----	1			
EM1038-2A	Upper Thread Tension Plate -----	1			
EM1530-0A	Hinge Stud -----	1			
EM8120-0A	Push Buttons -----	1			

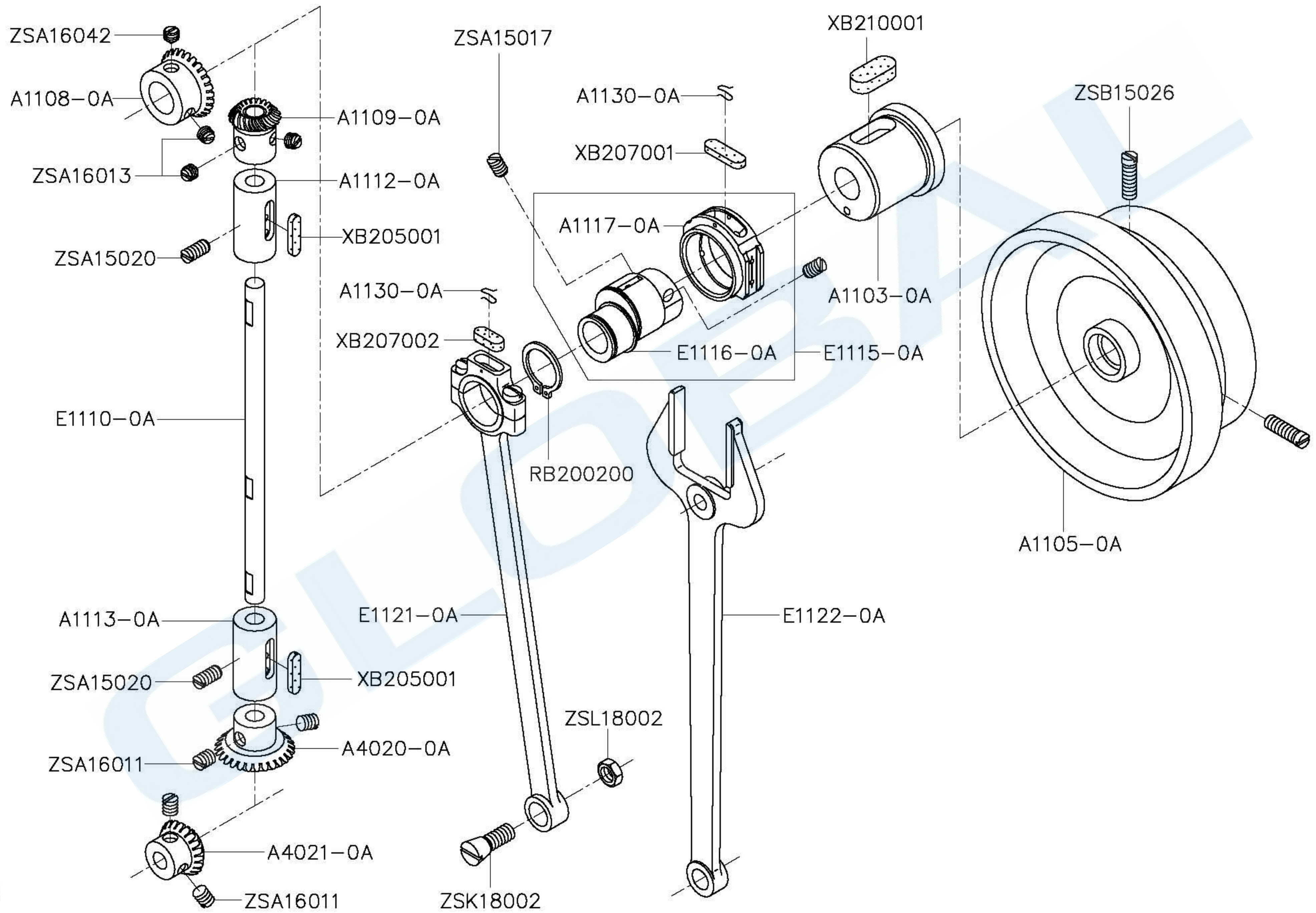
# B. SEWING MECHANISM(1)



## B · SEWING MECHANISM(1)

Part No	Name of Part	Q, TY	Part No	Name of Part	Q, TY
A1071-0A	Needle Bar Bushing (Upper) -----	1	XB108002	Felt -----	1
A1076-0A	Thread Guide -----	1	XB210001	Felt -----	1
A1077-0A	Needle Bar Upper Bushing Cap -----	1	ZSA11009	Screw (11/64-40x2.8) -----	1
A1082-0A	Needle Bar Guide Slide Block -----	1	ZSA15018	Screw (15/64-28x19) -----	1
A1104-0A	Collar -----	1	ZSA15020	Screw (15/64-28x11) -----	1
E1060-1A	Thread Take-up Lever -----	1	ZSA15021	Screw (15/64-28x4.5) -----	1
E1061-0A	Take-up Lever Support Stud -----	1	ZSA16010	Screw (1/4-40x4.5) -----	1
E1064-0A	Thread Take-up Lever Slide Block ---	1	ZSA16011	Screw (1/4-40x7) -----	2
E1065-1A	Take-up Lever -----	1	ZSB08010	Screw (1/8-44x4.6) -----	1
E1066-0A	Take-up Crank Pin -----	1	ZSB09019	Screw (9/64-40x6) -----	1
E1067-0A	Needle Bar Crank Rod -----	1	ZSB11024	Screw (11/64-40x8) -----	2
E1070-0A	Needle Bar -----	1	ZSB18001	Screw (9/62-28x16) -----	1
E1073-0A	Needle Bar Bushing (Upper) -----	1	ZSH15002	Screw (15/64-28x8) -----	2
E1074-0A	Needle Bar Clamp -----	1	ZSK09001	Screw (9/64-40) -----	1
E1078-0A	Thread Guide Bushing (Upper) -----	1			
E1081-0A	Needle Bar Connecting Link Guide ---	1			
E1100-0A	Upper Shaft -----	1			
E1101-0A	Upper Shaft Bushing (Left) -----	1			
E1106-0A	Crank Cam -----	1			
INDPx17#19	Needle -----	1			

# B. SEWING MECHANISM(2)

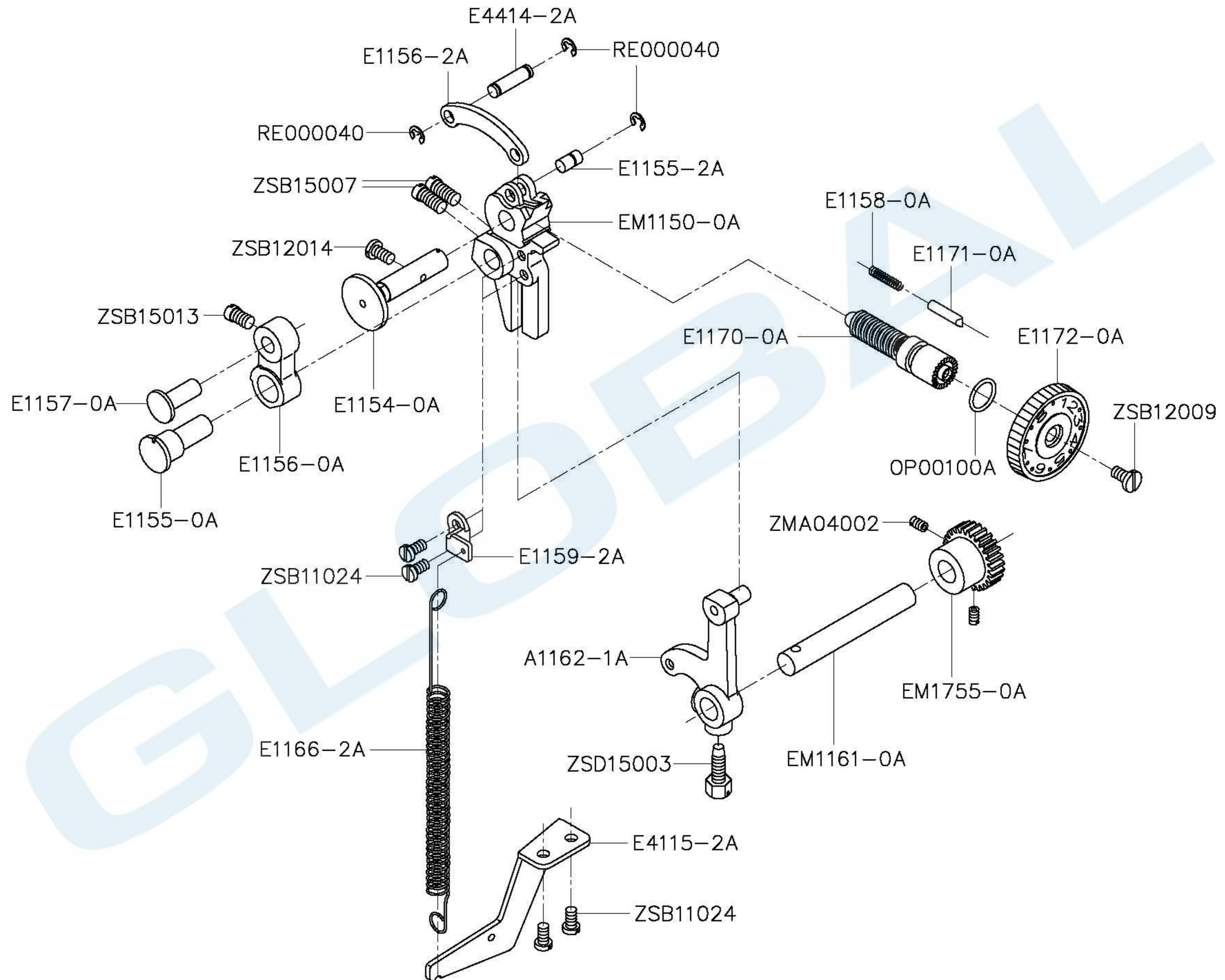


## B、SEWING MECHANISM(2)

Part No	Name of Part	Q, TY	Remarks
A1103-0A	Upper Shaft Bushing (Right) -----	1	
A1105-0A	Pulley -----	1	
A1108-0A	Bevel Gear (Upper Shaft) -----	1	
A1109-0A	Bevel Gear (Vertical Shaft Upper) -----	1	
A1112-0A	Vertical Shaft Bushing (Middle) -----	1	
A1113-0A	Vertical Shaft Bushing (Under) -----	1	
A1117-0A	Feed Cam Ring -----	1	
A1130-0A	Spring -----	2	
A4020-0A	Bevel Gear (Vertical Shaft Upper) -----	1	
A4021-0A	Bevel Gear (Hook Shaft) -----	1	
E1110-0A	Vertical Shaft -----	1	
E1115-0A	Feed Cam Assy. -----	1	
E1116-0A	Feed Cam -----	1	
E1121-0A	Crank Rod -----	1	
E1122-0A	Feed Forked Connection -----	1	
RB200200	Stop Ring -----	1	
XB205001	Oil Felt -----	2	
XB207001	Oil Felt -----	1	
XB207002	Oil Felt -----	1	
XB210001	Oil Felt -----	1	
ZSA15017	Screw (15/64/28x8.5) -----	2	
ZSA15020	Screw (15/64-28x11) -----	2	
ZSA16011	Screw (1/4-40x7) -----	4	
ZSA16013	Screw (1/4-40x5.5) -----	3	
ZSA16042	Screw (1/4-40x7) -----	1	
ZSB15026	Screw (15/64-28x18) -----	2	
ZSK18002	Screw (9/32-28) -----	1	
ZSL18002	Nut -----	1	



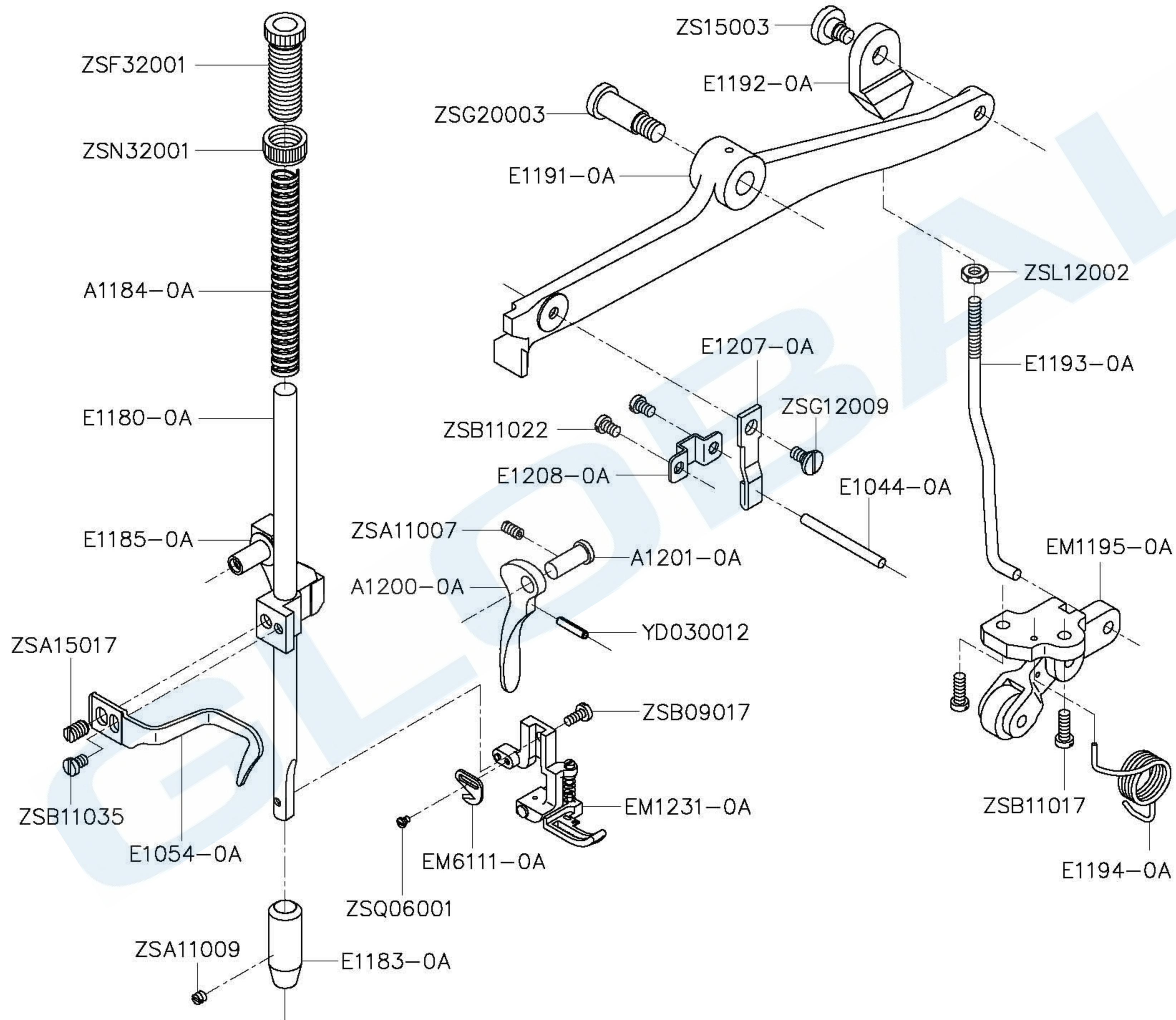
### C. FIRST SECTION GATHERING-CHANGING MECHANISM



## C、FIRST SECTION GATHERING-ADJUSTING MECHANISM

Part No	Name of Part	Q, TY	Remarks
A1162-1A	Reverse Lever Shaft -----	1	
E1154-0A	Set Pin -----	1	
E1155-0A	Set Pin -----	1	
E1155-2A	Set Pin -----	1	
E1156-0A	Feed Connecting Link -----	1	
E1156-2A	Feed Connecting Link -----	1	
E1157-0A	Set Pin -----	1	
E1158-0A	Spring -----	1	
E1159-2A	Bracket -----	1	
E1166-2A	Spring -----	1	
E1170-0A	Screw-Bar -----	1	
E1171-0A	Stopper Pin -----	1	
E1172-0A	Stitch Length Regulator Dial -----	1	
E4115-2A	Bracket -----	1	
E4414-2A	Pin -----	1	
EM1150-0A	Feed Regulator -----	1	
EM1161-0A	Reverse Lever Shaft -----	1	
EM1755-0A	Gear -----	1	
OP00100A	O-ring -----	1	
RE000040	E-ring -----	3	
ZMA04002	Screw (M4-0.7x6) -----	2	
ZSB11024	Screw (11/64-40x8) -----	4	
ZSB12009	Screw (3/16-28x8) -----	1	
ZSB12014	Screw (3/16-32x8) -----	1	
ZSB15007	Screw (15/64-28x12) -----	2	
ZSB15013	Screw (15/64-28x8) -----	1	
ZSD15003	Screw (15/64-28x16.5) -----	1	

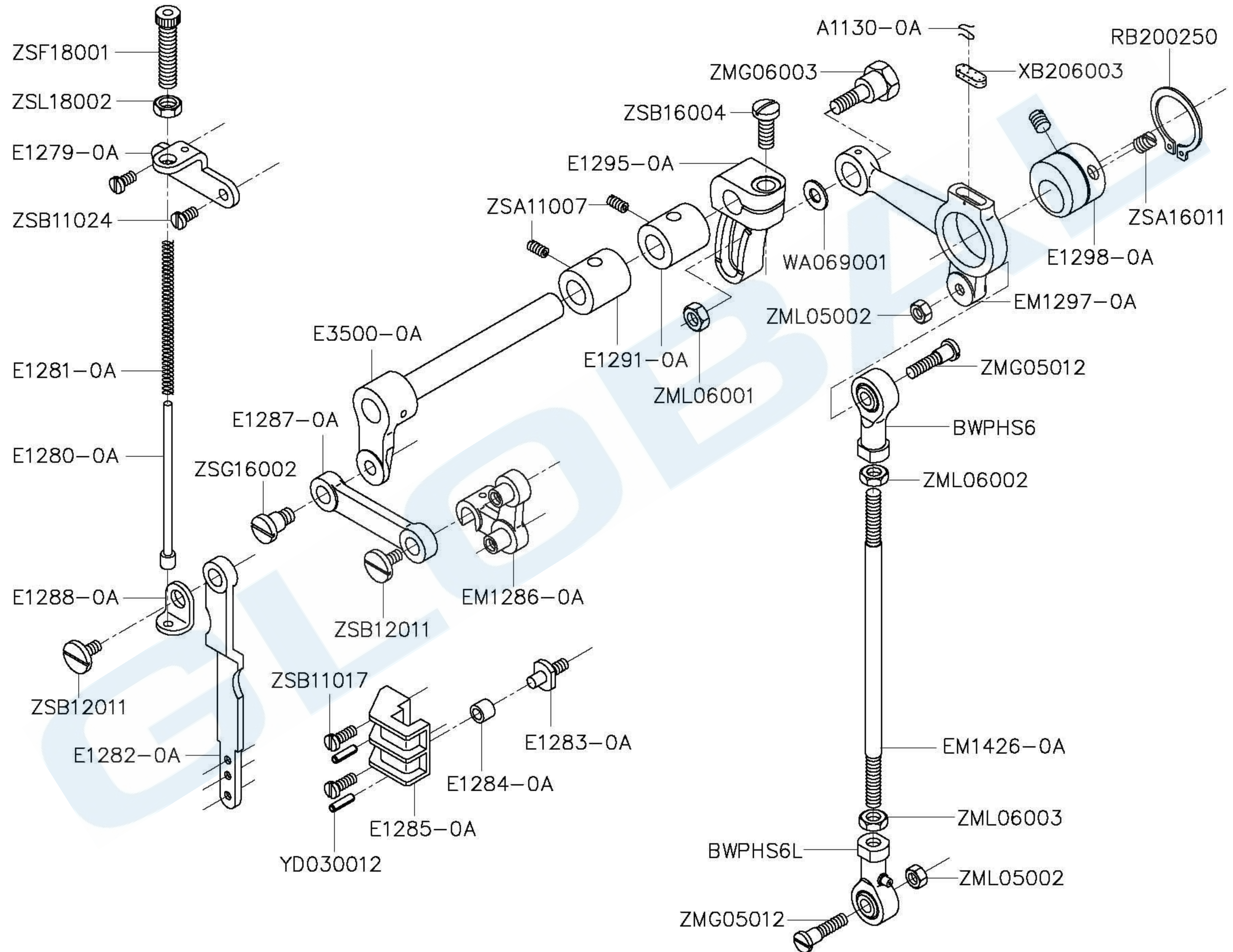
# D. PRESSER FOOT MECHANISM



## D · PRESSER FOOT MECHANISM

Part No	Name of Part	Q, TY	Remarks
A1184-0A	Presser Spring -----	1	
A1200-0A	Presser Bar Lifter -----	1	
A1201-0A	Presser Bar Lifter Pin -----	1	
E1044-0A	Tension Releasing Pin -----	1	
E1054-0A	Arm Thread Guide -----	1	
E1180-0A	Presser Bar -----	1	
E1183-0A	Presser Bar Bushing -----	1	
E1185-0A	Presser Bar Holder -----	1	
E1191-0A	Knee Lifter Lever -----	1	
E1192-0A	Knee Lifter Lever Joint -----	1	
E1193-0A	Knee Lifter Connecting Rod -----	1	
E1194-0A	Spring -----	1	
E1207-0A	Upper Thread Releasing Cam -----	1	
E1208-0A	Guide Plate -----	1	
EM1195-0A	Knee Lifter Connecting Rod Finger -----	1	
EM1231-0A	Presser Foot -----	1	
EM6111-0A	Knife -----	1	
YD030012	Spring Pin -----	1	
ZSA11007	Screw (11/64-40x8) -----	1	
ZSA11009	Screw (11/64-40x2.8) -----	1	
ZSA15017	Screw (15/64-28x8.5) -----	1	
ZSB09017	Screw (9/4-40x8) -----	1	
ZSB11017	Screw (11/64-40x12) -----	2	
ZSB11022	Screw (11/64-40x7) -----	2	
ZSB11035	Screw (11/64-40x6) -----	1	
ZSF32001	Screw (1/2-28x38) -----	1	
ZSG12009	Screw (3/16-28) -----	1	
ZSG15003	Screw (15/64-28) -----	1	
ZSG20003	Screw (5/16-24) -----	1	
ZSL12002	Nut -----	1	
ZSN32001	Nut -----	1	
ZSQ06001	Screw (3/32-56x3) -----	1	

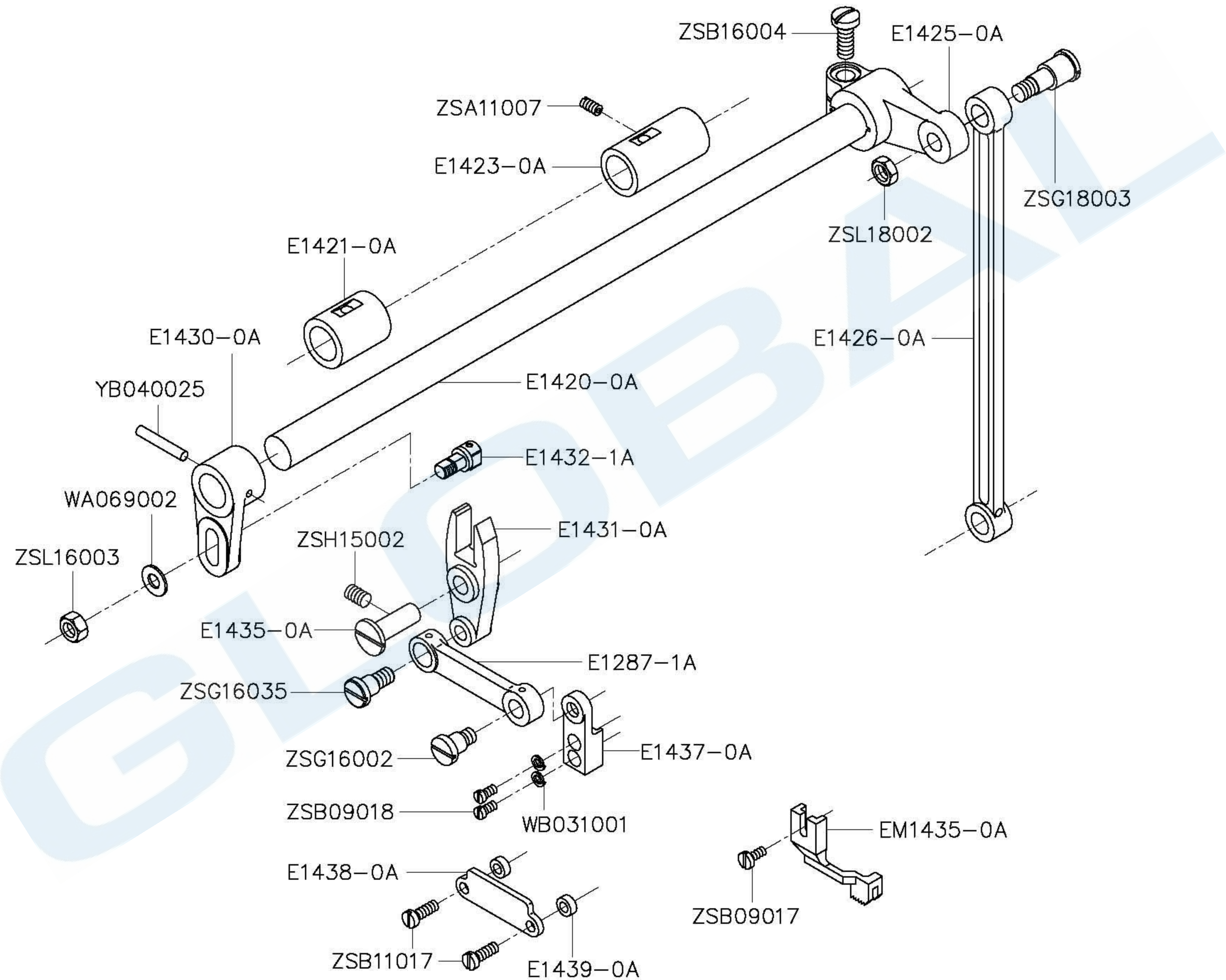
# E. FEED ROTATING SHAFT MECHANISM(1)



## E · FEED ROTATING SHAFT MECHANISM(1)

Part No	Name of Part	Q, TY	Part No	Name of Part	Q, TY
A1130-0A	Spring -----	1	RB200250	Stop Ring -----	1
BWPHS6	Bearing -----	1	WA069001	Washer -----	1
BWPHS6L	Bearing -----	1	XB206003	Oil Felt -----	1
E1279-0A	Presser Regulating Bracket -----	1	YD030012	Spring Pin -----	2
E1280-0A	Spring Guide Bar Complete -----	1	ZMG05012	Screw (M5-0.8) -----	2
E1281-0A	Spring -----	1	ZMG06003	Screw (M6-1.0) -----	1
E1282-0A	Walking Foot Guide Link -----	1	ZML05002	Nut -----	2
E1283-0A	Bell Crank Guide Pin -----	1	ZML06001	Nut -----	1
E1284-0A	Bell Crank Guide Bracket Block -----	1	ZML06002	Nut -----	1
E1285-0A	Bell Crank Guide Bracket -----	1	ZML06003	Nut -----	1
E1287-0A	Feed Lifting Rock Shaft Link -----	1	ZSA11007	Screw (11/64-40x8) -----	2
E1288-0A	Prop Up Plate -----	1	ZSA16011	Screw (1/4-40x7) -----	2
E1291-0A	Feed Rotating Shaft Bushing -----	2	ZSB11017	Screw (11/64-40x12) -----	2
E1295-0A	Feed Rotating Shaft Crank -----	1	ZSB11024	Screw (11/64-40x8) -----	2
E1298-0A	Eccentric Cam -----	1	ZSB12011	Screw (3/16-28x10) -----	2
E3500-0A	Feed Rotating Shaft Assy. -----	1	ZSB16004	Screw (1/4-24x16) -----	1
EM1286-0A	Bell Crank -----	1	ZSF18001	Screw (9/32-28x31) -----	1
EM1297-0A	Connection Rod -----	1	ZSG16002	Screw (1/4-40) -----	1
EM1426-0A	Connection Rod -----	1	ZSL18002	Nut -----	1

# E. FEED ROTATING SHAFT MECHANISM(2)

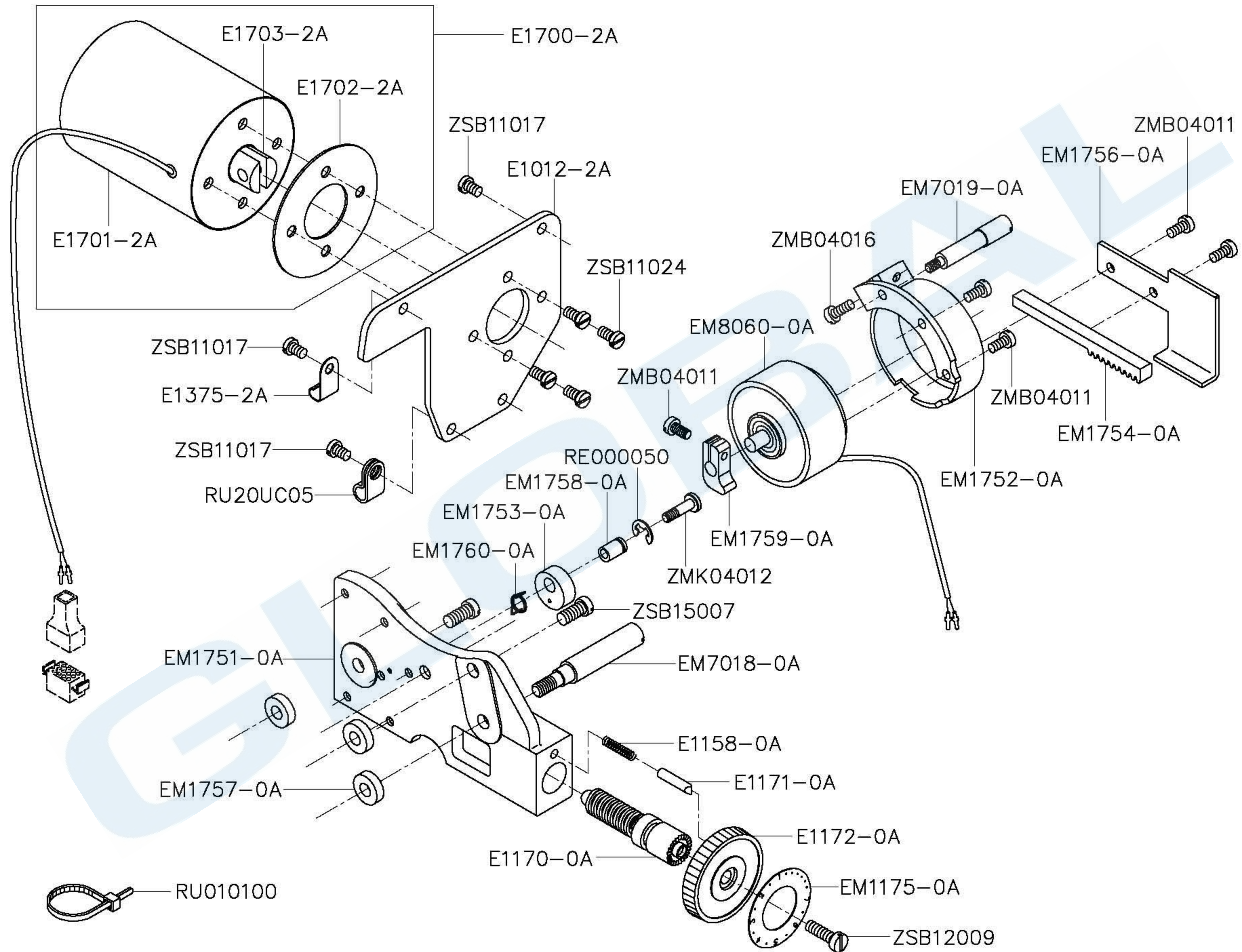


## E、FEED ROTATING SHAFT MECHANISM(2)

Part No	Name of Part	Q, TY	Remarks
E1287-1A	Walking Foot Connecting Link -----	1	
E1420-0A	Feed Driving Shaft -----	1	
E1421-0A	Feed Driving Shaft Bushing (Left) -----	1	
E1423-0A	Feed Driving Shaft Bushing (Right) -----	1	
E1425-0A	Feed Driving Rock Shaft Crank -----	1	
E1426-0A	Feed Driving Connecting Link -----	1	
E1430-0A	Feed Driving Rock Shaft Crank -----	1	
E1431-0A	Feed Connecting Lever -----	1	
E1432-1A	Feed Connecting Slick Block Complete -----	1	
E1435-0A	Hinged Pin -----	1	
E1437-0A	Feed Arm -----	1	
E1438-0A	Walking Foot Guide Bracket -----	1	
E1439-0A	Slide Washer -----	2	
EM1435-0A	Walking Foot -----	1	
WA069002	Washer -----	1	
WB031001	Spring Washer -----	2	
YB040025	Taper Pin -----	1	
ZSA11007	Screw (11/64-40x8) -----	1	
ZSB09017	Screw (9/64-40x8) -----	1	
ZSB09018	Screw (9/64-40x6.5) -----	2	
ZSB11017	Screw (11/64-40x12) -----	2	
ZSB16004	Screw (1/4-24x16) -----	1	
ZSG16002	Screw (1/4-40x5) -----	1	
ZSG16035	Screw (1/4-40x10) -----	1	
ZSG18003	Screw (9/32-28x7.5) -----	1	
ZSH15002	Screw (15/64-28x8) -----	1	
ZSL16003	Nut -----	1	
ZSL18002	Nut -----	1	



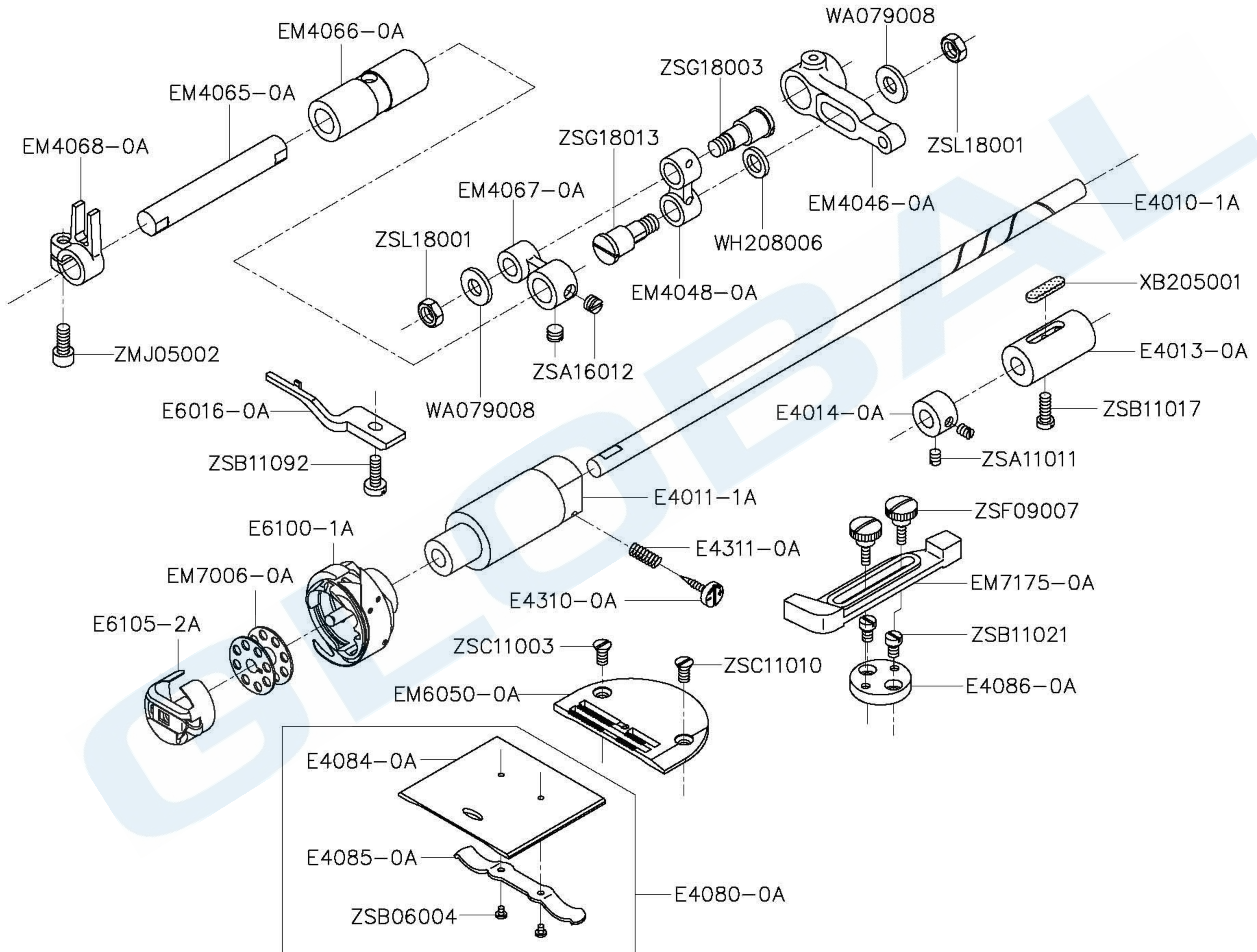
# F. SECOND SECTION GATHERING-CHANGING MECHANISM



## F、SECOND SECTION GATHERING-ADJUSTING MECHANISM

Part No	Name of Part	Q, TY	Remarks
E1012-2A	Arm Side Cover	1	
E1158-0A	Spring	1	
E1170-0A	Screw-Bar	1	
E1171-0A	Stopper Pin	1	
E1172-0A	Stitch Length Regulator Dial	1	
E1375-2A	Cord Holder	1	
E1700-2A	Solenoid For Touch-Back	1	
E1701-2A	Solenoid For Touch-Back	1	
E1702-2A	Washer	1	
E1703-2A	Plunger	1	
EM1175-0A	Length Control Plate	1	
EM1751-0A	Bracket	1	
EM1752-0A	Hinge Stud	1	
EM1753-0A	Eccentric Cam	1	
EM1754-0A	Back	1	
EM1756-0A	Protecting Plate	1	
EM1757-0A	Washer	3	
EM1758-0A	Regulating Eccentric	1	
EM1759-0A	Regulating Block	1	
EM1760-0A	Spring	3	
EM7018-0A	Stand	1	
EM7019-0A	Stand	1	
EM8060-0A	Rotary Solenoid	1	
RE000050	E-ring	1	
RU010100	Nylon Cable Tie	4	
RU20UC05	Cable Clamp	1	
ZMB04011	Screw (M4-0.7x8)	5	
ZMB04016	Screw (M4-0.7x10)	1	
ZMK04012	Screw (M4-0.7)	1	
ZSB11017	Screw (11/64-40x12)	4	
ZSB11024	Screw (11/64-40x8)	4	
ZSB12009	Screw (3/16-28x8)	1	
ZSB15007	Screw (15/64-28x12)	2	

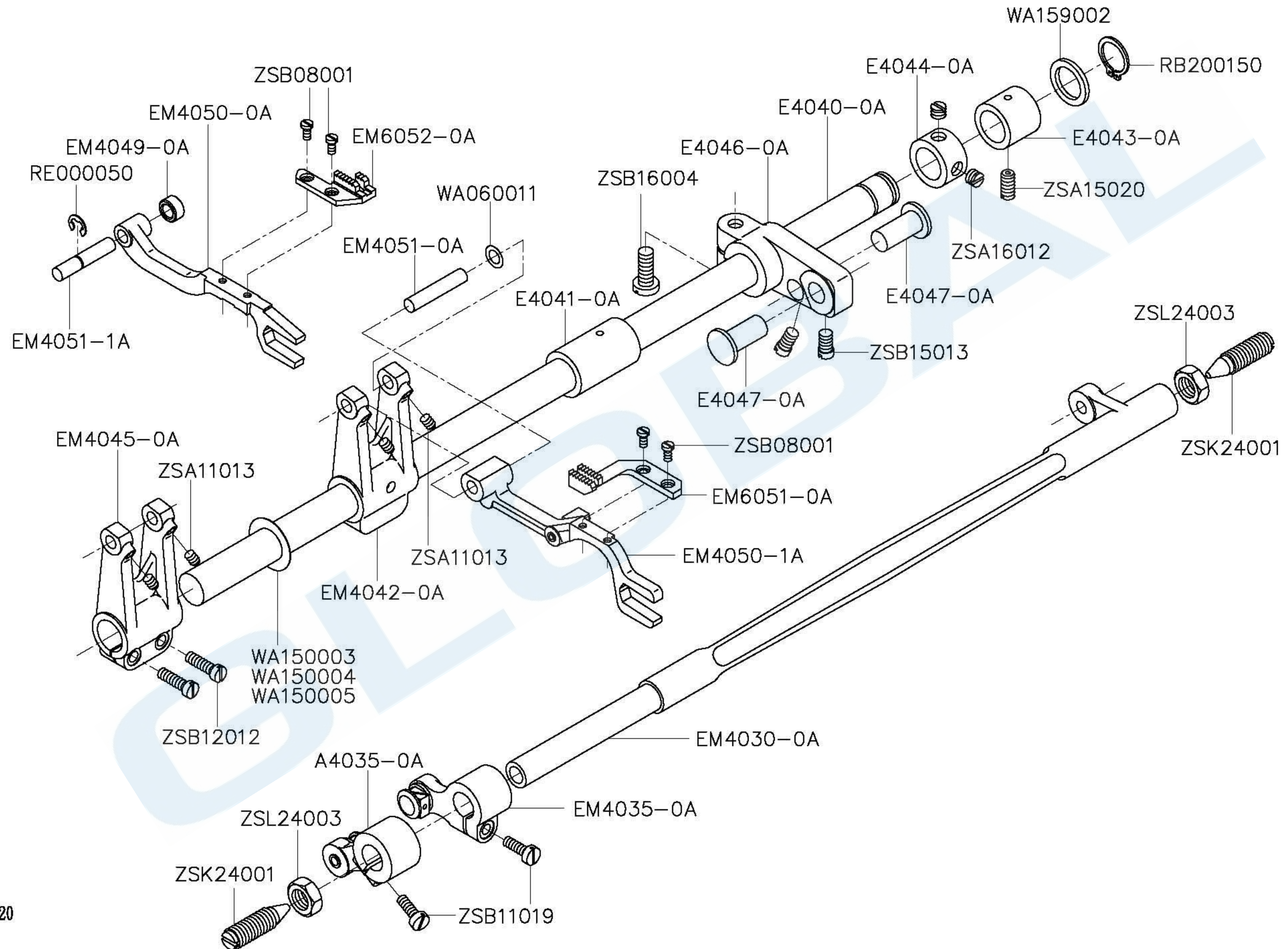
# G. ROTARY HOOK MECHANISM



## G · ROTARY HOOK MECHANISM

Part No	Name of Part	Q, TY	Part No	Name of Part	Q, TY
E4010-1A	Lower Shaft -----	1	WA079008	Washer -----	2
E4011-1A	Lower Shaft Bushing (Left) -----	1	WH208006	Washer -----	1
E4013-0A	Lower Shaft Bushing (Right) -----	1	XB205001	Oil Felt -----	1
E4014-0A	Collar -----	1	ZMJ05002	Screw (M5-0.8x12) -----	1
E4080-0A	Slide Plate Assy. -----	1	ZSA11011	Screw (11/64-40x4.5) -----	2
E4084-0A	Slide Plate -----	1	ZSA16012	Screw (1/4-40x4) -----	2
E4085-0A	Spring For Slide Plate -----	1	ZSB06004	Screw (3/32-56x2.2) -----	2
E4086-0A	Cloth Guide Plate -----	1	ZSB11017	Screw (11/64-40x12) -----	1
E4310-0A	Screw (M3-0.35x9.5) -----	1	ZSB11021	Screw (11/64-40x5.5) -----	2
E4311-0A	Spring -----	1	ZSB11092	Screw (11/64-40x15) -----	1
E6016-0A	Bobbin Case Opener -----	1	ZSC11003	Screw (11/64-40x9) -----	1
E6100-1A	Rotary Hook Assembly -----	1	ZSC11010	Screw (11/64-40x7.8) -----	1
E6105-2A	Bobbin Case Complete -----	1	ZSF09007	Screw (9/64-40x11) -----	2
EM4046-0A	Rocking Arm -----	1	ZSG18003	Screw (9/32-28x7.5) -----	1
EM4048-0A	Link -----	1	ZSG18013	Screw (9/32-28x6.9) -----	1
EM4065-0A	Shaft -----	1	ZSL18001	Nut -----	2
EM4066-0A	Bushing -----	1			
EM4067-0A	Rocking Link -----	1			
EM4068-0A	Guiding Bracket -----	1			
EM6050-0A	Needle Plate -----	1			
EM7006-0A	Bobbin -----	1			
EM7175-0A	Edge Guide -----	1			

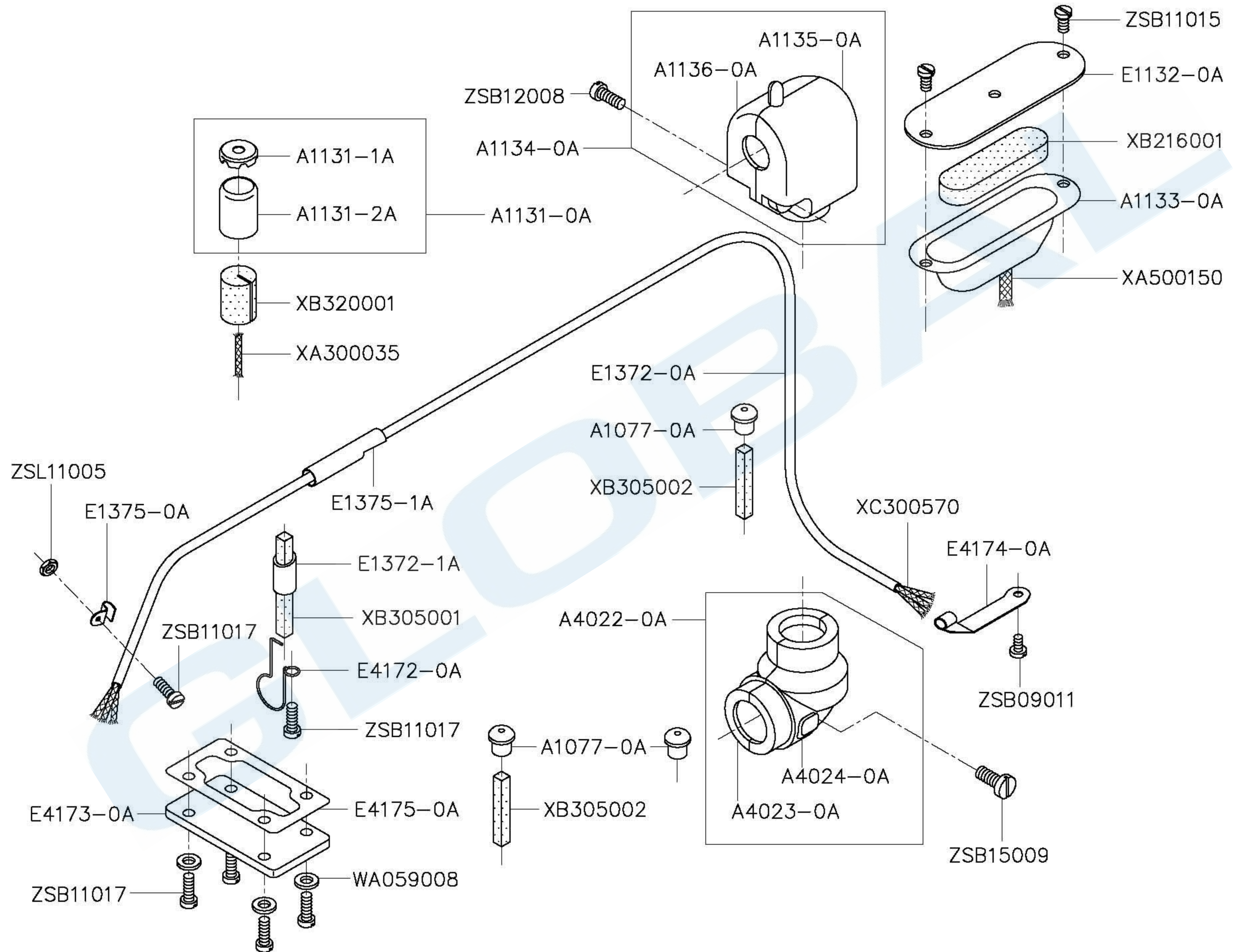
# H. ZIGZAG FEED MECHANISM



## H · ZIGZAG FEED MECHANISM

Part No	Name of Part	Q, TY	Part No	Name of Part	Q, TY
A4035-0A	Feed Lifting Rock Shaft Crank Assy.	1	RB200150	Retaining Ring -----	1
E4040-0A	Feed Rock Shaft -----	1	RE000050	E-Ring -----	1
E4041-0A	Feed Rock Shaft Bushing (Left) ----	1	WA060011	Washer -----	1
E4043-0A	Feed Rock Shaft Bushing (Right) ---	1	WA150003	Washer -----	1
E4044-0A	Collar -----	1	WA150004	Washer -----	1
E4046-0A	Feed Rock Shaft Crank (Right) ----	1	WA150005	Washer -----	1
E4047-0A	Feed Rock Shaft Crank Pin -----	2	WA159002	Washer -----	1
EM4030-0A	Feed Lifting Rock Shaft -----	1	ZSA11013	Screw (11/64-40x6) -----	4
EM4035-0A	Feed Lifting Rock Shaft Crank Assy.	1	ZSA15020	Screw (15/64-28x11) -----	1
EM4042-0A	Feed Connection Crank (Back) -----	1	ZSA16012	Screw (1/4-40x4) -----	2
EM4045-0A	Feed Connection Crank (Front) -----	1	ZSB08001	Screw (1/8-44x6) -----	4
EM4049-0A	Collar -----	1	ZSB11019	Screw (11/64-40x13) -----	2
EM4050-0A	Feed Bar (Front) -----	1	ZSB12012	Screw (3/16-28x15) -----	2
EM4050-1A	Feed Bar (Back) -----	1	ZSB15013	Screw (15/64-28x8) -----	2
EM4051-0A	Shaft -----	1	ZSB16004	Screw (1/4-24x16) -----	1
EM4051-1A	Shaft -----	1	ZSK24001	Screw (3/8-28) -----	2
EM6051-0A	Feed Dog (Back) -----	1	ZSL24003	Nut -----	2
EM6052-0A	Feed Dog (Front) -----	1			

# I. OIL LUBRICATION MECHANISM

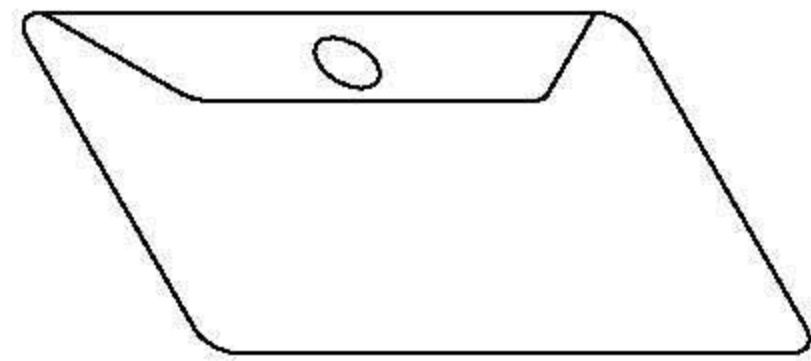


## I、OIL LUBRICATION MECHANISM

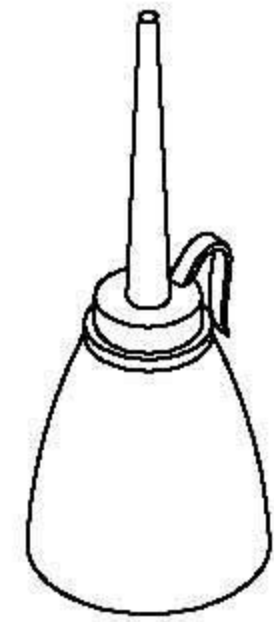
Part No	Name of Part	Q, TY	Part No	Name of Part	Q, TY
A1077-0A	Needle Bar Upper Bushing Cap -----	3	WA059008	Washer -----	4
A1131-0A	Oil Cap Assy. -----	1	XA300035	Oil Wick -----	1
A1131-1A	Upper Oil Cap -----	1	XA500150	Oil Wick -----	1
A1131-2A	Lower Oil Cap -----	1	XB216001	Oil Felt -----	1
A1133-0A	Oil Tank (Right) -----	1	XB305001	Oil Felt -----	1
A1134-0A	Gear Box (Upper Set) -----	1	XB305002	Oil Felt -----	2
A1135-0A	Gear Box (With Teeth)(Upper Set) ---	1	XB320001	Oil Felt -----	1
A1136-0A	Gear Box (Without Teeth)(Upper Set)	1	XC300570	Wool Yarn -----	3
A4022-0A	Gear Box (Lower Set) -----	1	ZSB09011	Screw (9/64-40x6.5) -----	1
A4023-0A	Gear Box (With Teeth)( Lower Set) --	1	ZSB11015	Screw (11/64-40x8.5) -----	2
A4024-0A	Gear Box (Without Teeth)( Lower Set)	1	ZSB11017	Screw (11/64-40x12) -----	6
E1132-0A	Cover Plate -----	1	ZSB12008	Screw (3/16-24x12) -----	1
E1372-0A	Oil Tube -----	1	ZSB15009	Screw (15/64-28x13) -----	1
E1372-1A	Oil Tube -----	1	ZSL11005	Nut -----	1
E1375-0A	Oil Pipe Holder -----	1			
E1375-1A	Oil Pipe Holder -----	1			
E4172-0A	Tube Holder -----	1			
E4173-0A	Oil Pipe Supporter -----	1			
E4174-0A	Oil Pipe Holder -----	1			
E4175-0A	Gasket For Oil Reservoir -----	1			



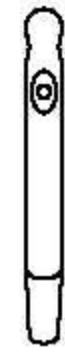
# J. ACCESSORIES(1)



A7000-0A



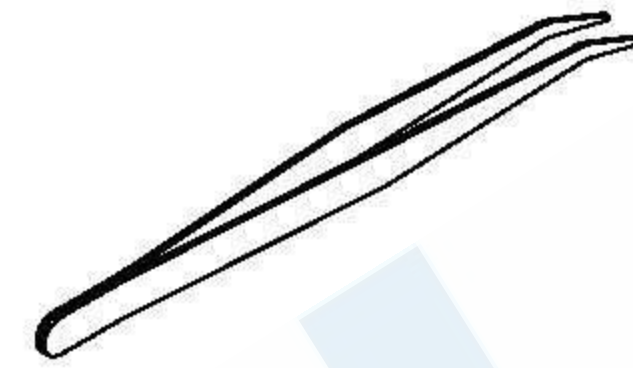
A7012-1A



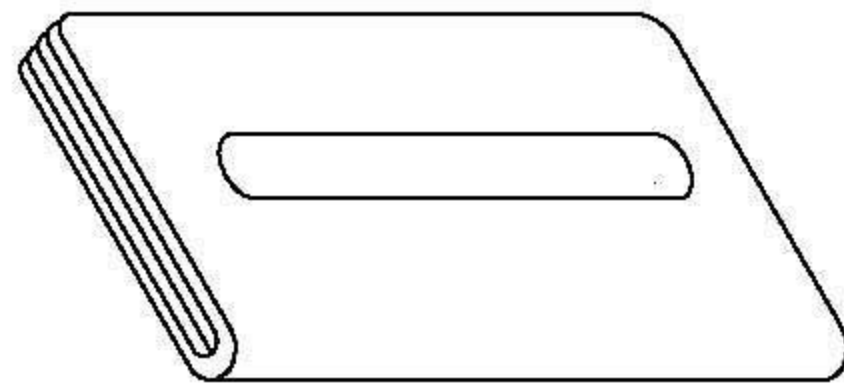
E1050-0A



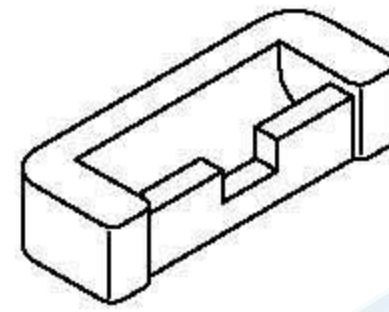
A7012-0A



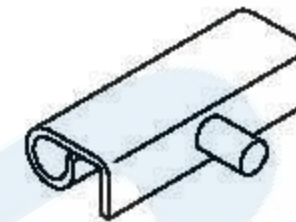
EH7014-0A



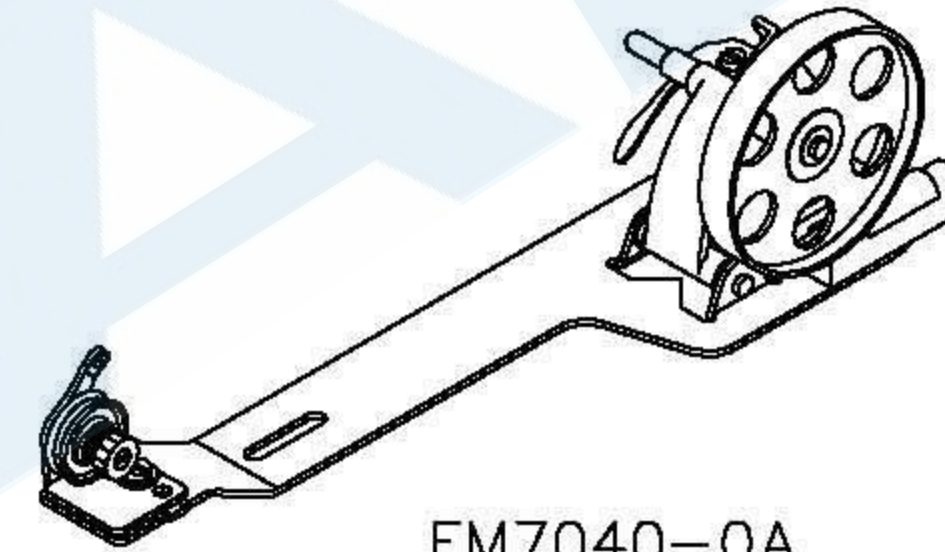
A7001-0A



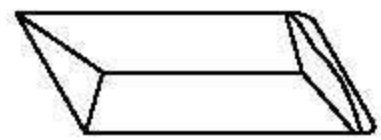
E7022-0A



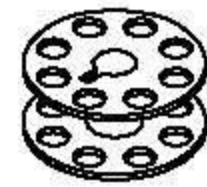
E7021-0A



EM7040-0A



INDPx17#19



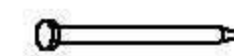
EM7006-0A



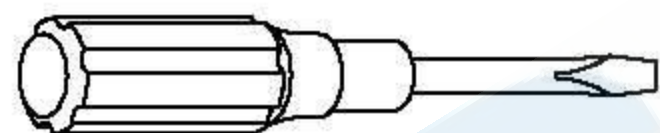
ZMT05001



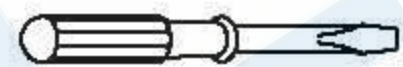
WA059003



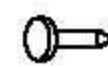
A7011-0A



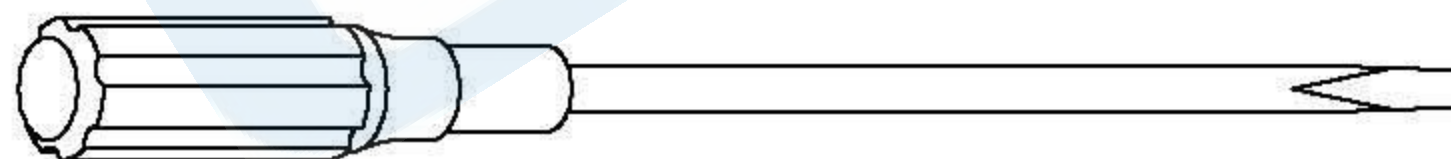
A7010-1A



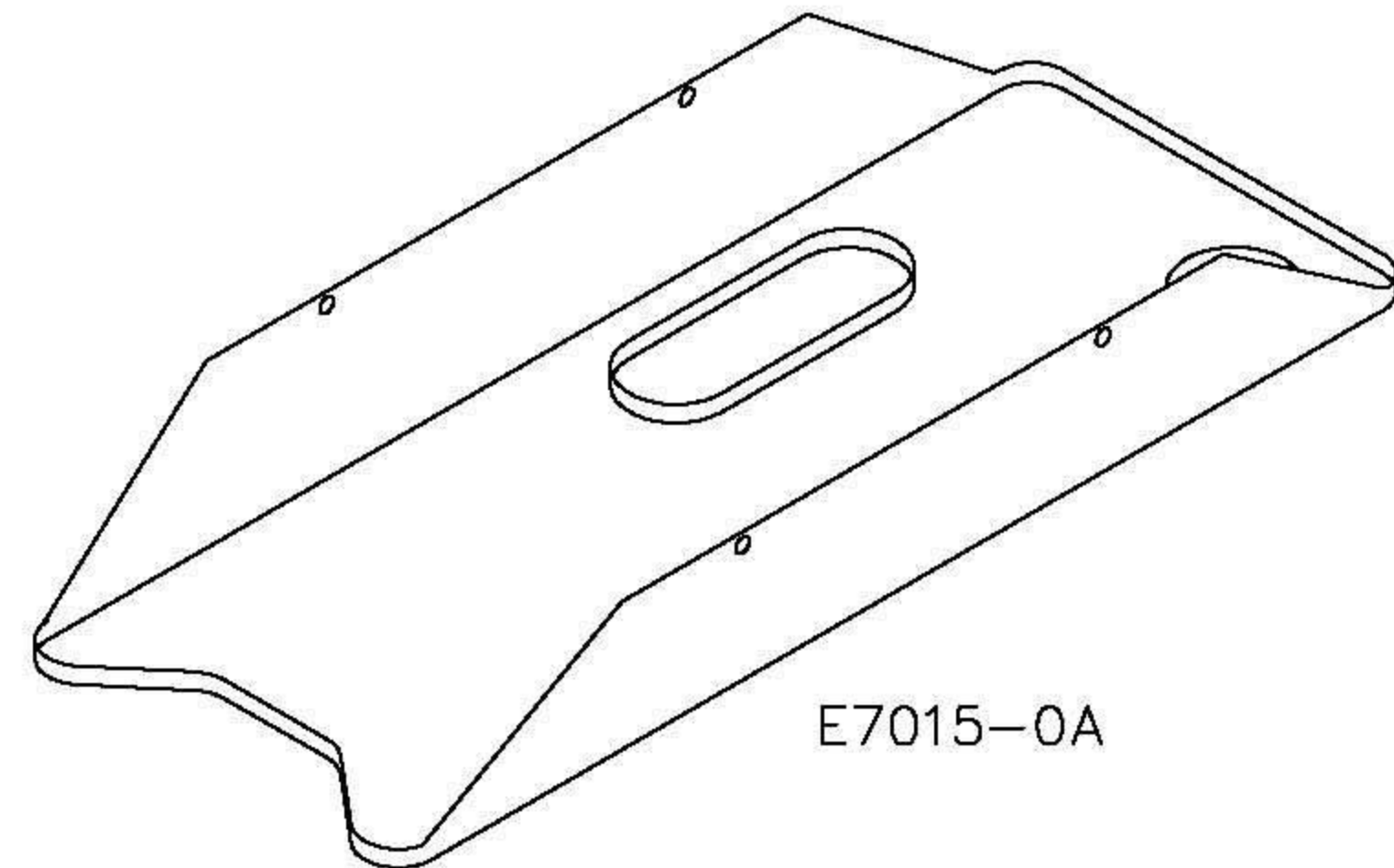
A7010-0A



A7011-1A



A7010-2A

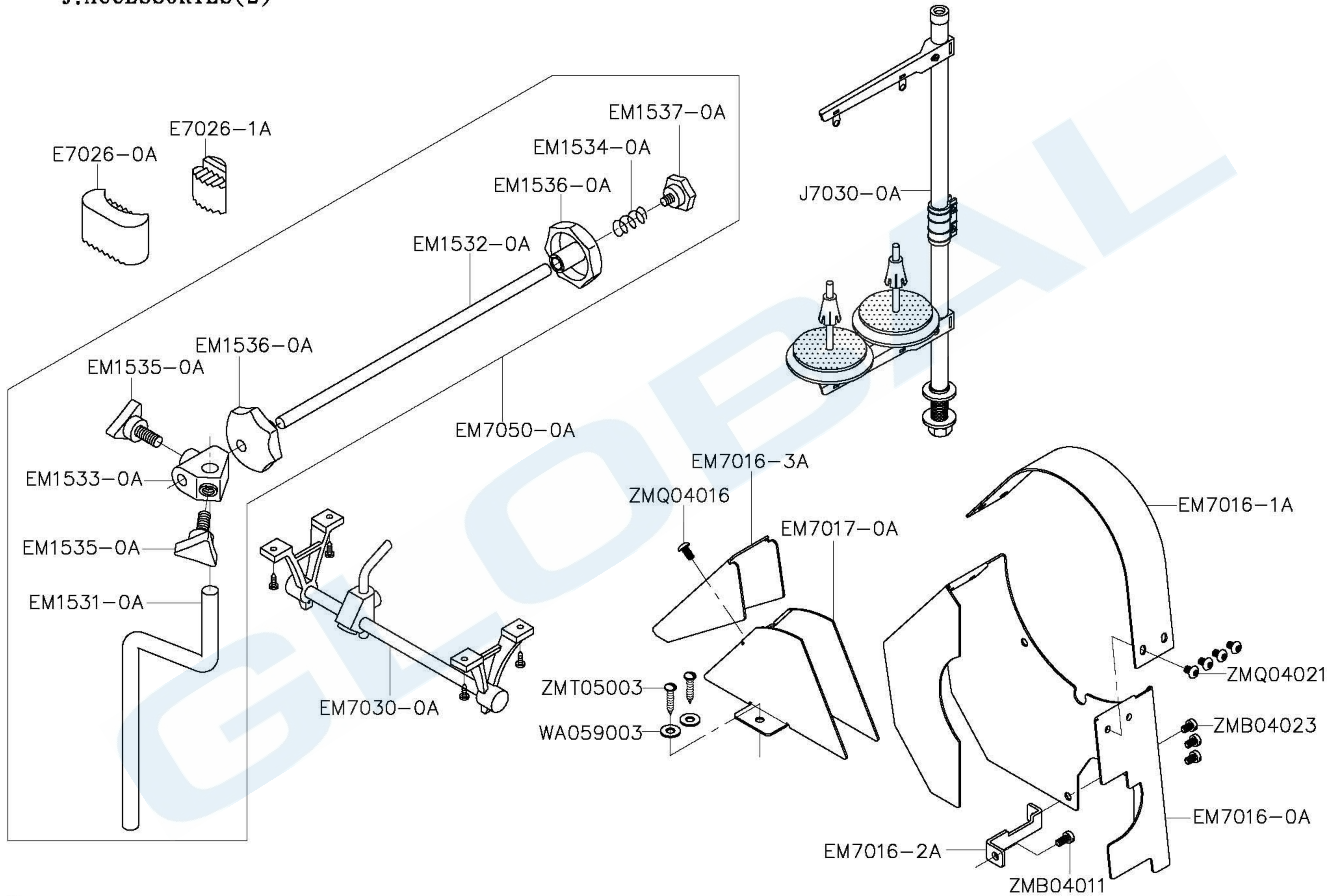


E7015-0A

## J、ACCESSORIES(1)

Part No	Name of Part	Q, TY	Remarks
A7000-0A	Accessory Bag -----	1	
A7001-0A	Vinyl Cover -----	1	
A7010-0A	Screw Driver (Small) -----	1	
A7010-1A	Screw Driver (Middle) -----	1	
A7010-2A	Screw Driver (Large) -----	1	
A7011-0A	Nail -----	10	
A7011-1A	Nail -----	4	
A7012-0A	Oilier (Small) -----	1	
A7012-1A	Oilier (Middle) -----	1	
E1050-0A	Spool Pin -----	1	
E7015-0A	Oil Pan -----	1	
E7021-0A	Head Hinge -----	2	
E7022-0A	Rubber Hinge -----	2	
EH7014-0A	Tweezers -----	1	
EM7006-0A	Bobbin -----	4	
EM7040-0A	Bobbin Winder -----	1	
INDPx17#19	Needle -----	4	
WA059003	Washer -----	2	
ZMT05001	Screw (4.5x20) -----	2	

# J.ACCESSORIES(2)



## J、ACCESSORIES(2)

Part No	Name of Part	Q, TY	Remarks
E7026-0A	Head Cushion	2	
E7026-1A	Head Cushion	2	
EM1531-0A	Lever	1	
EM1532-0A	Shaft	1	
EM1533-0A	Hinge Stud	1	
EM1534-0A	Spring	1	
EM1535-0A	Stud Screw	2	
EM1536-0A	Knob	2	
EM1537-0A	Stud Screw	1	
EM7016-0A	Belt Cover	1	
EM7016-1A	Belt Cover (Upper)	1	
EM7016-2A	Belt Cover Stand	1	
EM7016-3A	Cover	1	
EM7017-0A	Belt Cover (Back)	1	
EM7030-0A	Knee Lifter Assy.	1	
EM7050-0A	Thread Stand	1	
J7030-0A	Thread Stand	1	
WA059003	Washer	2	
ZMB04011	Screw (M4-0.7x8)	1	
ZMB04023	Screw (M4-0.7x6)	3	
ZMQ04016	Screw (M4-0.7x8)	1	
ZMQ04021	Screw (M4-0.7x6)	4	
ZMT05003	Wood Screw	2	

K、NUMERICAL PARTS-LIST

PARTS NO.	PAGE	PARTS NO.	PAGE	PARTS NO.	PAGE	PARTS NO.	PAGE	PARTS NO.	PAGE
A1013-1A	2	A4022-0A	22	E1065-1A	4	E1185-0A	10	E1431-0A	14
A1022-0A	2	A4023-0A	22	E1066-0A	4	E1191-0A	10	E1432-1A	14
A1025-0A	2	A4024-0A	22	E1067-0A	4	E1192-0A	10	E1435-0A	14
A1042-0A	2	A4035-0A	20	E1070-0A	4	E1193-0A	10	E1437-0A	14
A1051-0A	2	A7000-0A	24	E1073-0A	4	E1194-0A	10	E1438-0A	14
A1071-0A	4	A7001-0A	24	E1074-0A	4	E1207-0A	10	E1439-0A	14
A1076-0A	4	A7010-0A	24	E1078-0A	4	E1208-0A	10	E1700-2A	16
A1077-0A	4, 22	A7010-1A	24	E1081-0A	4	E1279-0A	12	E1701-2A	16
A1082-0A	4	A7010-2A	24	E1100-0A	4	E1280-0A	12	E1702-2A	16
A1103-0A	6	A7011-0A	24	E1101-0A	4	E1281-0A	12	E1703-2A	16
A1104-0A	4	A7011-1A	24	E1106-0A	4	E1282-0A	12	E3500-0A	12
A1105-0A	6	A7012-0A	24	E1110-0A	6	E1283-0A	12	E4010-1A	18
A1108-0A	6	A7012-1A	24	E1115-0A	6	E1284-0A	12	E4011-1A	18
A1109-0A	6	BWPHS6	12	E1116-0A	6	E1285-0A	12	E4013-0A	18
A1112-0A	6	BWPHS6L	12	E1121-0A	6	E1287-0A	12	E4014-0A	18
A1113-0A	6	E1012-2A	16	E1122-0A	6	E1287-1A	14	E4040-0A	20
A1117-0A	6	E1020-0A	2	E1132-0A	22	E1288-0A	12	E4041-0A	20
A1130-0A	6, 12	E1021-0A	2	E1154-0A	8	E1291-0A	12	E4043-0A	20
A1131-0A	22	E1026-0A	2	E1155-0A	8	E1295-0A	12	E4044-0A	20
A1131-1A	22	E1027-0A	2	E1155-2A	8	E1298-0A	12	E4046-0A	20
A1131-2A	22	E1028-0A	2	E1156-0A	8	E1372-0A	22	E4047-0A	20
A1133-0A	22	E1029-0A	2	E1156-2A	8	E1372-1A	22	E4080-0A	18
A1134-0A	22	E1044-0A	10	E1157-0A	8	E1375-0A	22	E4084-0A	18
A1135-0A	22	E1050-0A	24	E1158-0A	8, 16	E1375-1A	22	E4085-0A	18
A1136-0A	22	E1052-0A	2	E1159-2A	8	E1375-2A	16	E4086-0A	18
A1162-1A	8	E1053-0A	2	E1166-2A	8	E1420-0A	14	E4115-2A	8
A1184-0A	10	E1054-0A	10	E1170-0A	8, 16	E1421-0A	14	E4172-0A	22
A1200-0A	10	E1060-1A	4	E1171-0A	8, 16	E1423-0A	14	E4173-0A	22
A1201-0A	10	E1061-0A	4	E1172-0A	8, 16	E1425-0A	14	E4174-0A	22
A4020-0A	6	E1063-0A	2	E1180-0A	10	E1426-0A	14	E4175-0A	22
A4021-0A	6	E1064-0A	4	E1183-0A	10	E1430-0A	14	E4310-0A	18

K · NUMERICAL PARTS-LIST

PARTS NO.	PAGE	PARTS NO.	PAGE	PARTS NO.	PAGE	PARTS NO.	PAGE	PARTS NO.	PAGE
E4311-0A	18	EM1532-0A	26	EM6050-0A	18	WA060011	20	ZMB04016	16
E4414-2A	8	EM1533-0A	26	EM6051-0A	20	WA069001	12	ZMB04023	26
E6016-0A	18	EM1534-0A	26	EM6052-0A	20	WA069002	14	ZMG05012	12
E6100-1A	18	EM1535-0A	26	EM6111-0A	10	WA079008	18	ZMG06003	12
E6105-2A	18	EM1536-0A	26	EM7006-0A	18, 24	WA150003	20	ZMJ05002	18
E7015-0A	24	EM1537-0A	26	EM7016-0A	26	WA150004	20	ZMK04012	16
E7021-0A	24	EM1751-0A	16	EM7016-1A	26	WA150005	20	ZML05002	12
E7022-0A	24	EM1752-0A	16	EM7016-2A	26	WA159002	20	ZML06001	12
E7026-0A	26	EM1753-0A	16	EM7016-3A	26	WB031001	14	ZML06002	12
E7026-1A	26	EM1754-0A	16	EM7017-0A	26	WB041002	2	ZML06003	12
EH1021-0A	2	EM1755-0A	8	EM7018-0A	16	WH208006	18	ZMQ04016	26
EH1025-0A	2	EM1756-0A	16	EM7019-0A	16	XA300035	22	ZMQ04021	26
EH1030-0A	2	EM1757-0A	16	EM7030-0A	26	XA500150	22	ZMT05001	24
EH1042-0A	2	EM1758-0A	16	EM7040-0A	24	XB108002	4	ZMT05003	26
EH7014-0A	24	EM1759-0A	16	EM7050-0A	26	XB123001	2	ZSA11007	10, 12, 14
EM1010-0A	2	EM1760-0A	16	EM7175-0A	18	XB205001	6, 18	ZSA11008	2
EM1020-0A	2	EM4030-0A	20	EM8060-0A	16	XB206003	12	ZSA11009	4, 10
EM1026-0A	2	EM4035-0A	20	EM8120-0A	2	XB207001	6	ZSA11011	18
EM1038-0A	2	EM4042-0A	20	INDPx17#19	4, 24	XB207002	6	ZSA11013	20
EM1038-2A	2	EM4045-0A	20	J7030-0A	26	XB210001	4, 6	ZSA15017	6, 10
EM1150-0A	8	EM4046-0A	18	OP00100A	8	XB216001	22	ZSA15018	4
EM1161-0A	8	EM4048-0A	18	RB200150	20	XB305001	22	ZSA15020	4, 6, 20
EM1175-0A	16	EM4049-0A	20	RB200200	6	XB305002	22	ZSA15021	4
EM1195-0A	10	EM4050-0A	20	RB200250	12	XB320001	22	ZSA15022	2
EM1231-0A	10	EM4050-1A	20	RE000040	8	XC300570	22	ZSA16010	4
EM1286-0A	12	EM4051-0A	20	RE000050	16, 20	YB040025	14	ZSA16011	4, 6, 12
EM1297-0A	12	EM4051-1A	20	RU010100	16	YD030012	10, 12	ZSA16012	18, 20
EM1426-0A	12	EM4065-0A	18	RU20UC05	16	ZMA04002	8	ZSA16013	6
EM1435-0A	14	EM4066-0A	18	WA059003	24	ZMB04002	2	ZSA16042	6
EM1530-0A	2	EM4067-0A	18	WA059003	26	ZMB04011	2, 16	ZSB06004	18
EM1531-0A	26	EM4068-0A	18	WA059008	22	ZMB04011	26	ZSB08001	20

K、NUMERICAL PARTS-LIST

PARTS NO.	PAGE	PARTS NO.	PAGE	PARTS NO.	PAGE	PARTS NO.	PAGE	PARTS NO.	PAGE
ZSB08010	4	ZSC11010	18						
ZSB09011	22	ZSD15003	8						
ZSB09013	2	ZSD20007	2						
ZSB09016	2	ZSF09007	18						
ZSB09017	10, 14	ZSF18001	12						
ZSB09018	14	ZSF32001	10						
ZSB09019	4	ZSG12009	10						
ZSB11015	22	ZSG15003	10						
ZSB11017	10	ZSG16002	12, 14						
ZSB11017	12, 14, 16, 18, 22	ZSG16035	14						
ZSB11019	20	ZSG18003	14, 18						
ZSB11021	2, 18	ZSG18013	18						
ZSB11022	10	ZSG20003	10						
ZSB11023	2	ZSH15002	4, 14						
ZSB11024	4, 8, 12, 16	ZSK09001	4						
ZSB11035	10	ZSK18002	6						
ZSB11092	18	ZSK24001	20						
ZSB12008	22	ZSL11005	22						
ZSB12009	8, 16	ZSL12002	10						
ZSB12011	12	ZSL16003	14						
ZSB12012	20	ZSL18001	18						
ZSB12014	8	ZSL18002	6, 12, 14						
ZSB15007	8, 16	ZSL24003	20						
ZSB15009	22	ZSN16001	2						
ZSB15013	8, 20	ZSN32001	10						
ZSB15026	6	ZSQ06001	10						
ZSB16004	12	ZSR16002	2						
ZSB16004	14, 20								
ZSB18001	4								
ZSC11003	18								