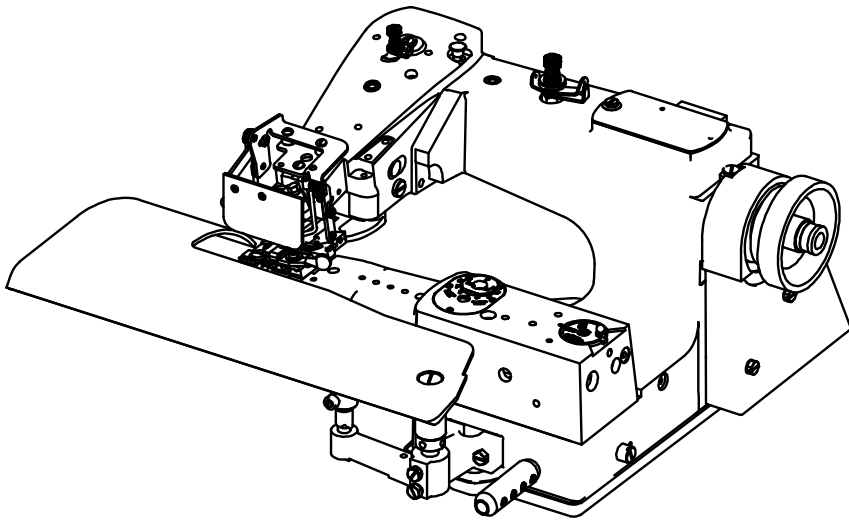
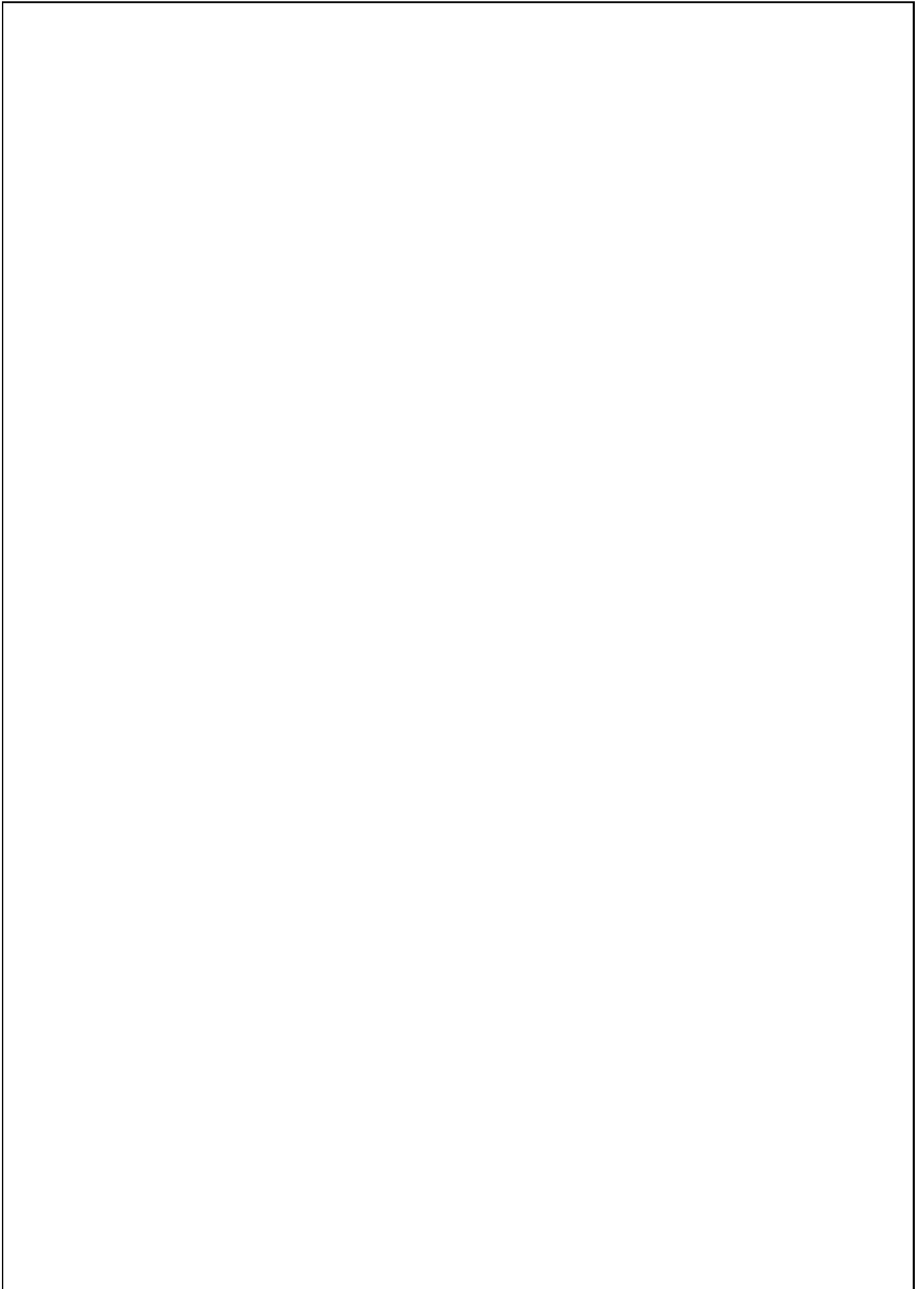


CM360 工业用暗缝机
Industrial Blindstitch Machine

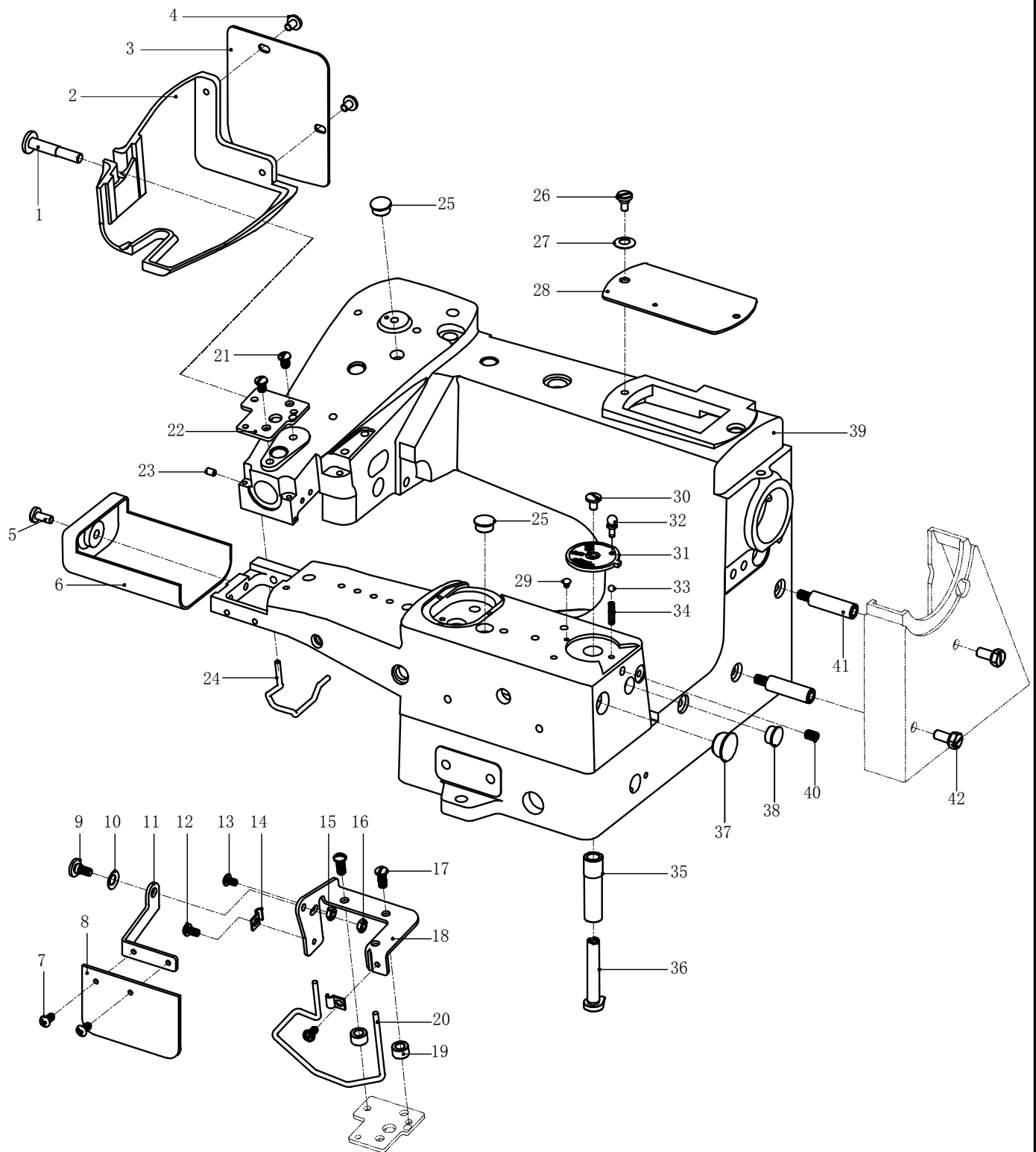




目 录

A、机架、引线及防护部分 Machine frame Down-lead & Safety components	1
B、引线及润滑部分 Thread eyelets & Oiling spots components	5
C、针摆驱动装置部分 Needle driving components	9
D、抬压脚部分 Presser foot components	11
E、针板及压料部分 Presser foot components	13
F、起菱盘驱动部分 Ridge forming components	17
G、起菱盘传动及调节部分 Ridge transmission & adjust components	21
H、挑线及送料部分 Looper & feed components	25
I、附件部分 Adjunct components	27

A、机架及防护部分
Machine frame & Safety components

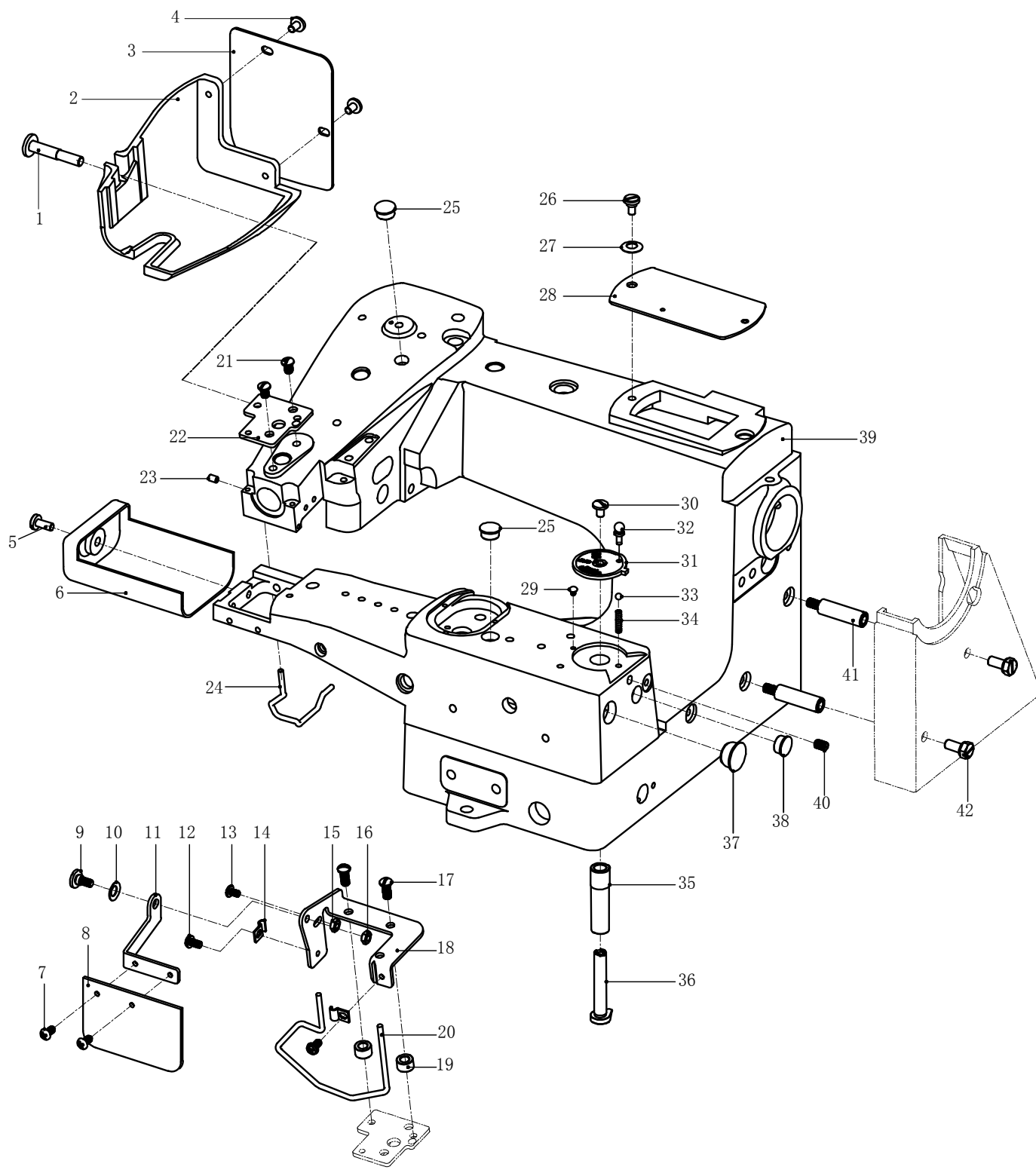


A、机架、引线及防护部分

Machine frame Down-lead & Safety components

序号 Ref.No	代号 Assemble.No	件号 Parts.No	部件名称 Description	数量 Num
1	364A-01	M01-08	螺丝/Screw (1/4-24×15.9)	1
2	364A-02	M01-07	侧盖/Head Cover	1
3	364A-03	M01-05	后盖板/Head Cover (Rear)	1
4	364A-04	LD00007	螺丝/Screw (3/16-32×5.5)	2
5	364A-05	LD00012	螺丝/Screw (3/16-32×11.5)	1
6	364A-06	M01-14	端面盖/Arm Cover	1
7	364A-07	LD00021	螺丝/Screw (M3×6)	2
8	364A-08	M03-03	挡针板/Eye Guard	1
9	364A-09	M03-05	螺丝/Screw (11/64-40×9.7)	1
10	364A-10	DQ00017	引线片螺钉垫圈5/Washer 5	2
11	364A-11	M03-02	挡针板支架塑料片/Eye Guard Support	1
12	364A-12	LD00172	护手装置压片螺钉/Screw (M4×8)	1
13	364A-13	LD00019	挡针板支架限位螺钉/Screw(9/64-40×3)	1
14	364A-14	M03-11	护手装置支柱/Finger Guard Stay	2
15	364A-15	LM00001	螺母/Nut	1
16	364A-16	LM00007	螺母/Nut	1
17	364A-17	LD00022	螺丝/Screw (11/64-40×10.5)	2
18	364A-18	M03-09	挡针板支架/Eye Guard Bracket	1
19	364A-19	M03-14	垫块/Spacer	2
20	364A-20	M03-13	护手装置(右)/Finger Guard(Right)	1
21	364A-21	LD00027	螺丝/Screw (3/16-32×8)	2
22	364A-22	M03-15	支架板/Supporting Plate	1
23	364A-23	LD00004	螺丝/Screw(M4×4)	1
24	364A-24	M01-09	护手装置/Finger Guard	1
25	364A-25	A01-01-B	橡皮塞/Rubber Stopper	2
26	364A-26	M01-04	螺丝/Screw (3/16-32×6.4)	1
27	364A-27	DQ00004	垫片/Washer	1
28	364A-28	M01-02	顶盖板/Top Cover	1
29	364A-29	M09-07	铆钉/Leading Rivet	1
30	364A-30	LD00027	螺丝/Screw(3/16-32×8)	1
31	364A-31	M01-39	跳缝调节器/Skipstitch Selector	1
32	364A-32	M01-39-1	跳缝调节器销/Skipstitch Selector Pin	1
33	364A-33	GZ00001	跳缝调节器钢珠/Skipstitch Selector ball	1
34	364A-34	TH00005	跳缝调节钢珠弹簧/Skipstitch Selector ball Spring	1

A、机架及防护部分
Machine frame & Safety components

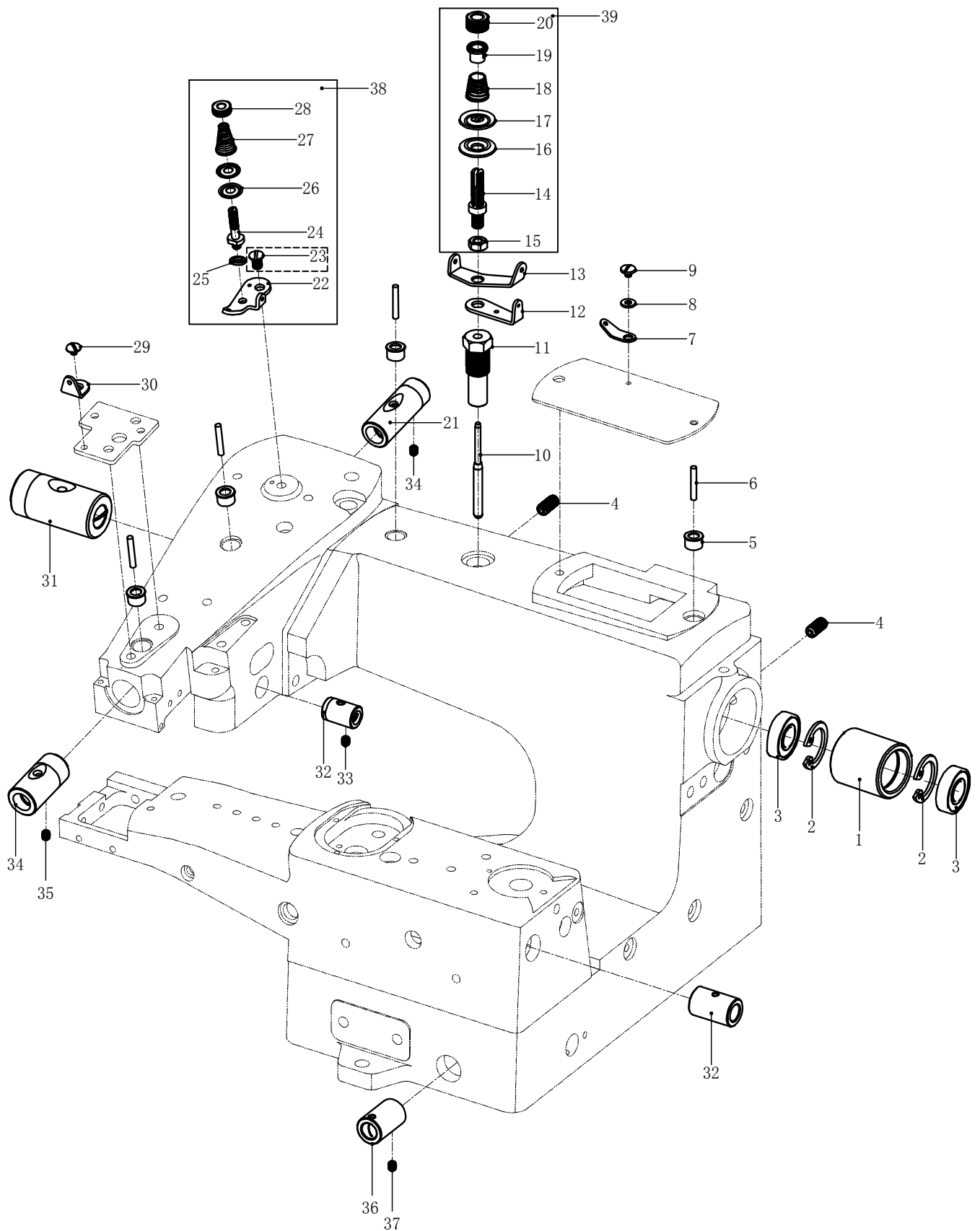


A、机架、引线及防护部分

Machine frame Down-lead & Safety components

序号 Ref.No	代号 Assemble.No	件号 Parts.No	部件名称 Description	数量 Num
35	364A-35	M01-41	跳缝凸轮套筒/Skipstitch Cam Bushing	1
36	364A-36	M01-42	跳缝凸轮/Skipstitch Cam	1
37	364A-37	A01-01-C	橡皮塞/Rubber Stopper	1
38	364A-38	V01-40	橡皮塞/Rubber Stopper	1
39	364A-39	M01-01-BD	机架/Machine Frame Unit	1
40	364A-40	LD00018	螺丝/Screw (7/32-32×10.3)	1
41	364A-41	M01-38	螺丝/Screw (13/64-32×10)	2
42	367A-42	LD00016	螺丝/Screw (7/32-32×9.5)	2

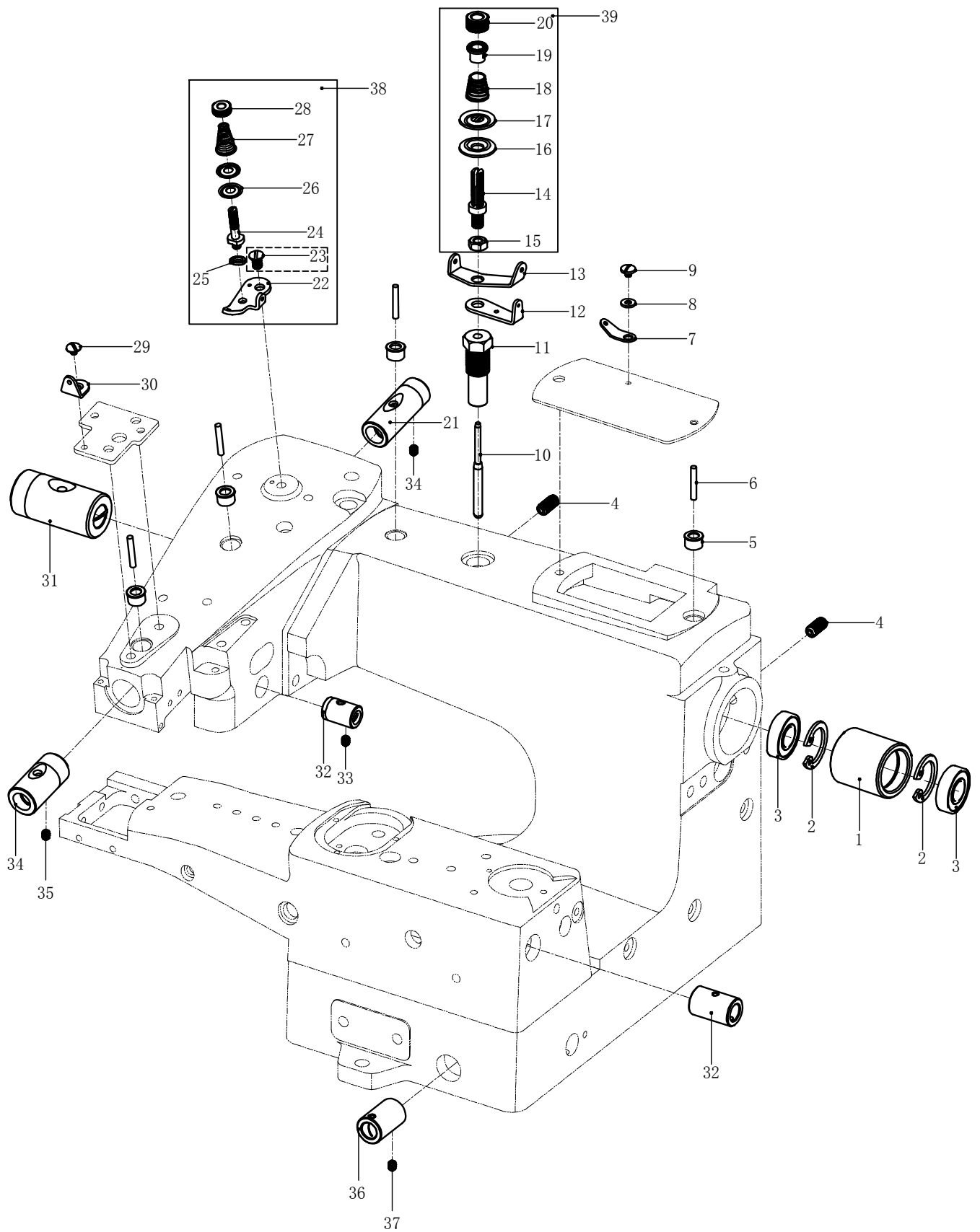
B、引线及润滑部分
Thread eyelets & Oiling spots components



B、引线及润滑部分
Thread eyelets & Oiling spots components

序号 Ref.No	代号 Assemble.No	件号 Parts.No	部件名称 Description	数量 Num
1	364B-01	M14-22	轴承套/Ball Bearing Bush	1
2	364B-02	TDQ00020	内卡簧/Necklace Spring	2
3	364B-03	ZC00022	轴承/Ball Bearing	2
4	364B-04	LD00020	螺丝/Screw (1/4-24×14.3)	2
5	364B-05	M02-16	油盖/Oil Cup	4
6	364B-06	A02-03	吸油绳(棉制纱线)/Oil Wich (Woolen Yarn)	4
7	364B-07	A07-12	过线器/Thread Eyelet	1
8	364B-08	DQ00015	垫片/Wasner	1
9	364B-09	LD00019	螺丝/Screw (9/64-40×3.8)	1
10	364B-10	M02-12	顶线杆/Tension Release Pin	1
11	364B-11	M02-11	顶线板螺丝/Tension Post Support	1
12	364B-12	M02-10	压线圈孔(下)/Tension Disc Eyelet (Lower)	1
13	364B-13	M02-09	压线圈孔/Tension Disc Eyelet	1
14	364B-14	M02-07	压线柱子/Tension Post	1
15	364B-15	M02-08	压线柱子螺母/Tension Post Nut	1
16	364B-16	M02-06	压线板/Tension Disc	1
17	364B-17	M02-05	压线弹簧支架/Thread Nipper Spring Holder	1
18	364B-18	M02-04	压线弹簧/Thread Tension Spring	1
19	364B-19	M02-03	压线弹簧套筒/Thread Spring Bushing	1
20	364B-20	M02-02	压线弹簧调节螺母/Thread Tension Spring Adjusting Nut	1
21	364B-21	M02-31	针杆轴套筒(后)/Needle Driving Shaft Bushing (Rear)	1
22	364B-22	M02-23	过线孔/Supplementary Thread Eyelet	1
23	364B-23	LD00027	螺丝/Screw (3/16-32×6.4)	1
24	364B-24	M02-22	压线杆/Tension Post	1
25	364B-25	M02-36	弹簧垫圈/Spring Washer	1
26	364B-26	M02-21	压线板/Supplementary Tension Disc	2
27	364B-27	M02-20	压线辅助弹簧/Supplementary Tension Spring	1
28	364B-28	M02-19	压线弹簧调节螺母/Thread Tension Spring Adjusting Nut	1
29	364B-29	LD00019	螺丝/Screw (9/64-40×4)	1
30	364B-30	M02-26	过线器(前)/Thread Eyelet (Front)	1
31	364B-31	A02-01	主轴套筒(左)/Main Shaft Bushing(Left)	1
32	364B-32	A03-37	套筒/Bushing	2
33	364B-33	LD00004	螺钉/Screw (M4×4)	1
34	364B-34	M02-32	针杆轴套筒(前)/Needle Driving Shaft Bushing(Front)	1

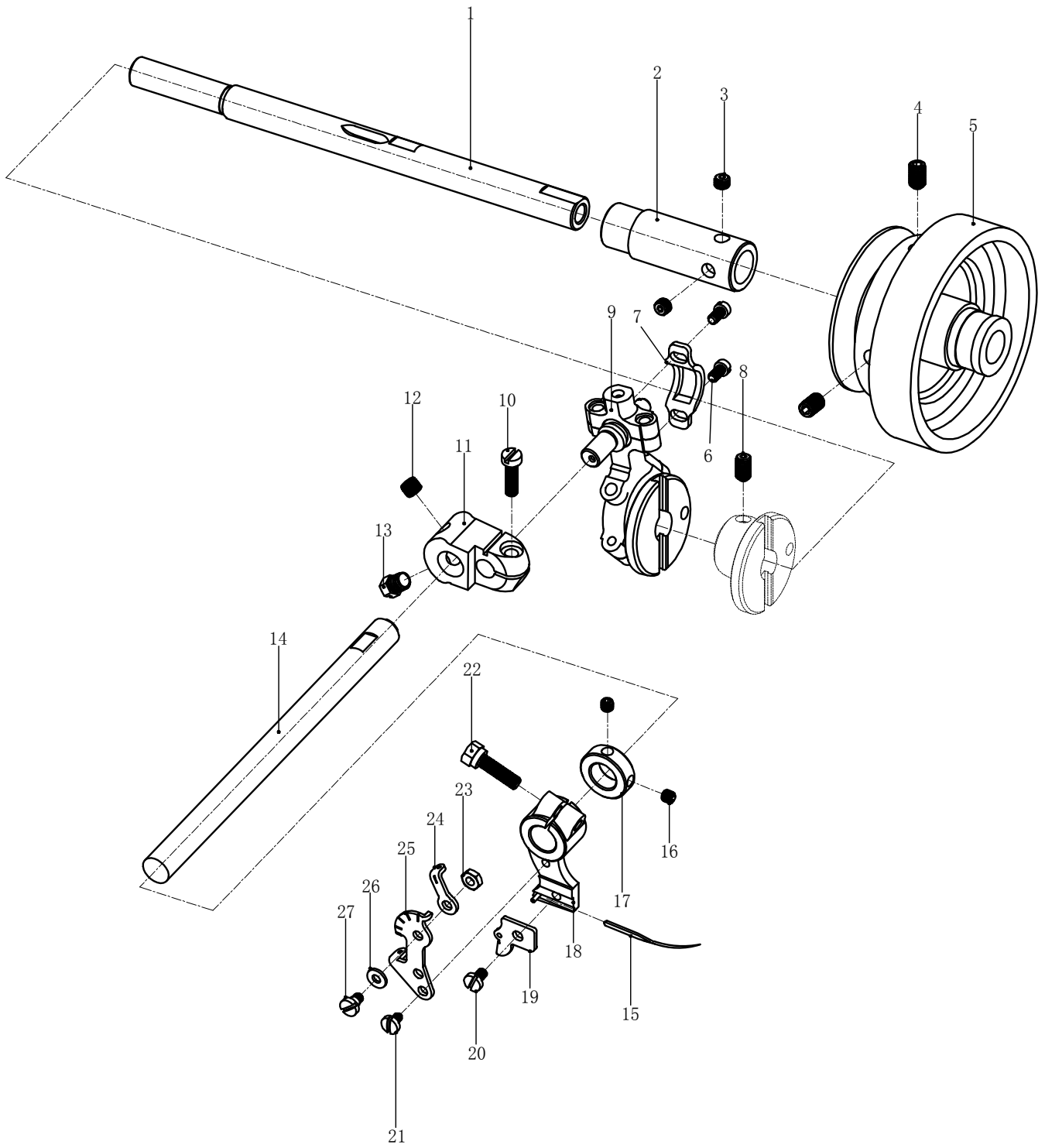
B、引线及润滑部分
Thread eyelets & Oiling spots components



B、引线及润滑部分
Thread eyelets & Oiling spots components

序号 Ref.No	代号 Assemble.No	件号 Parts.No	部件名称 Description	数量 Num
35	364B-35	LD00099	螺钉/Screw (M5×8)	2
36	364B-36	M02-34	升降压杆主轴套筒/Knee Pree Shaft Bushing	1
37	364B-37	LD00004	螺钉/Screw (M4×4)	1
38	364B-38	M02-22/ZJ	线张力组件/Thread Tension Mechanism,C.Set	1
39	364B-39	M02-01/ZJ	线张力组件/Thread Tension Mechanism,C.Set	1

C、针摆驱动装置部分
Needle driving components

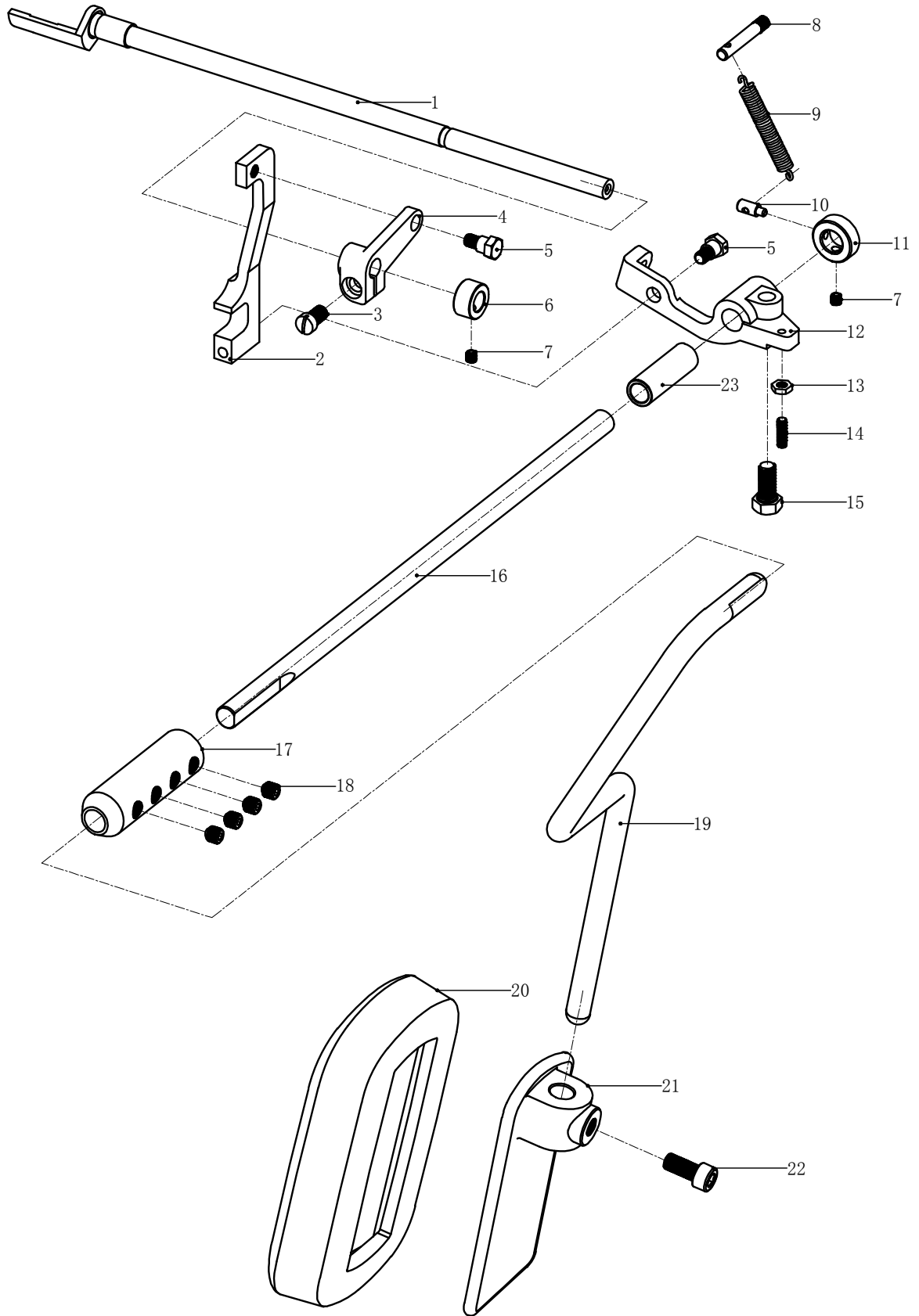


C、针摆驱动装置部分

Needle driving components

序号 Ref.No	代号 Assemble.No	件号 Parts.No	部件名称 Description	数量 Num
1	364C-01	M04-05	主轴/Main Shaft	1
2	364C-02	M04-06	线张力松紧偏心销/Tension Release Eccentric	1
3	364C-03	LD00036	螺丝/Screw(7/32-32×3.6)	2
4	364C-04	LD00063	皮带轮螺钉/Screw(15/64-28×10)	2
5	364C-05	M09-10	皮带轮/Pulley	1
6	364C-06	LD00518	球头套盖螺钉/Screw(1/8-44×6.5)	2
7	364C-07	A03-25	球头套盖/Ball Connecting Rod Cap	1
8	364C-08	LD00539	连杆偏心器螺钉/Screw(7/32-32×11)	1
9	364C-09	A03-18	关节球头组件/Needle Driving Eccentric Assembly	1
10	364C-10	LD00512	针轴曲柄螺钉/Screw(11/64-40×16)	1
11	364C-11	A03-12	针轴曲柄/Needle Driving Shaft Lever	1
12	364C-12	LD00505	针轴曲柄螺钉/Screw(1/4-40×5.2)	1
13	364C-13	LD00511	针轴曲柄螺钉/Screw(1/4-40×6)	1
14	364C-14	A03-05	针轴/Needle Carrier Shaft	1
15	364C-15	BZ1-8-1	机针/Needle(System:29BL 11#)	1
16	364C-16	LD00510	针轴环螺钉/Screw(11/64-40×4)	2
17	364C-17	A03-06	针轴环/Needle Carrier Shaft Collar	1
18	364C-18	M04-26	针摆Needle Carrier	1
19	364C-19	M04-30	夹针板/Needle Clamp	1
20	364C-20	LD00056	夹针板螺钉/Screw(5/32-40×7)	1
21	364C-21	LD00049	顶盖弹簧片螺钉/Screw(9/64-40×4.5)	2
22	364C-22	LD00509	针摆螺丝/Screw(3/16-32×16.5)	1
23	364C-23	LM00007	升降杆连接块固定螺母/Nut	1
24	364C-24	M04-34	引线装置1/Needle Thread Pull-off	1
25	364C-25	M04-32	线张力调节器/Needle Thread Pull-off Eyelet	1
26	364C-26	DQ00005	垫圈/Spring Washer	1
27	364C-27	M04-37	螺丝/Screw(9/64-40×7.5)	1

D、抬压脚部分
Presser foot components

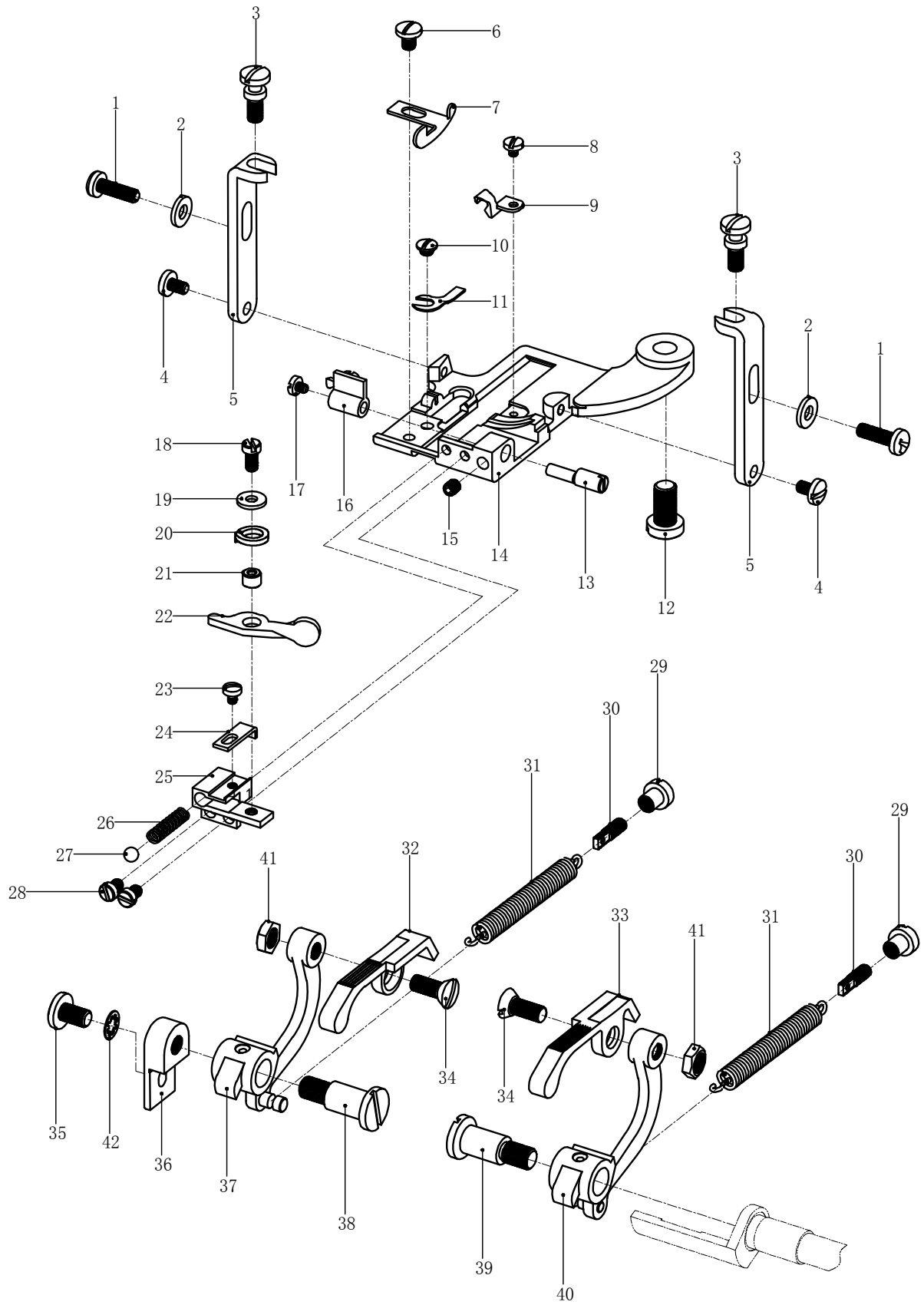


D、抬压脚部分

Presser foot components

序号 Ref.No	代号 Assemble.No	件号 Parts.No	部件名称 Description	数量 Num
1	364D-01	M05-15	压杆主轴/Presser Foot Depress Shaft	1
2	364D-02	M05-14	压杆连杆/Presser Foot Connecting Link	1
3	364D-03	LD00033	压杆连接块螺钉/Screw(7/32-32×9.5)	1
4	364D-04	M05-12	压杆连接块/Presser Foot Depress Shaft Lever	1
5	364D-05	M05-11	升降杆螺丝/Screw(3/16-32×10.7)	2
6	364D-06	A05-26	挡圈/Collar	1
7	364D-07	LD00004	内紧定/Screw (M4×4)	1
8	364D-08	M05-01	弹簧销/Spring Pin	1
9	364D-09	TH00033	升降杆主轴弹簧/Knee Press Shaft Spring	1
10	364D-10	M05-03	销子/Pin	1
11	364D-11	M05-04	升降杆主轴挡圈/Collar	1
12	364D-12	M05-07	升降杆连接块/Knee Press Shaft Lever	1
13	364D-13	LM00007	升降杆连接块固定螺母/Nut	1
14	364D-14	LD00031	调节螺丝/Screw(9/64-40×12)	1
15	364D-15	LD00029	升降杆连接块螺丝/Screw(1/4-24×14.3)	1
16	364D-16	M05-06	升降杆主轴/Knee Press Shaft	1
17	364D-17	M05-19	升降压杆连接块/Knee Press Joint	1
18	364D-18	LD00003	内紧定/Screw(M6×6)	4
19	364D-19	FJ3-4	压杆/Knee Press Shank	1
20	364D-20	FJ3-2	靠垫/Knee Press Cushion	1
21	364D-21	M05-24	压板/Knee Press	1
22	364D-22	LD00034	压板螺丝/Screw(1/4-28×10)	1
23	364D-23	M05-18	升降杆主轴套筒/Knee Press Shaft Sleeve	1
24	364D-24	LD00172	一十字复合槽盘头垫片螺钉/Screw (M4×8)	1

E、针板及压料部分
Presser foot components

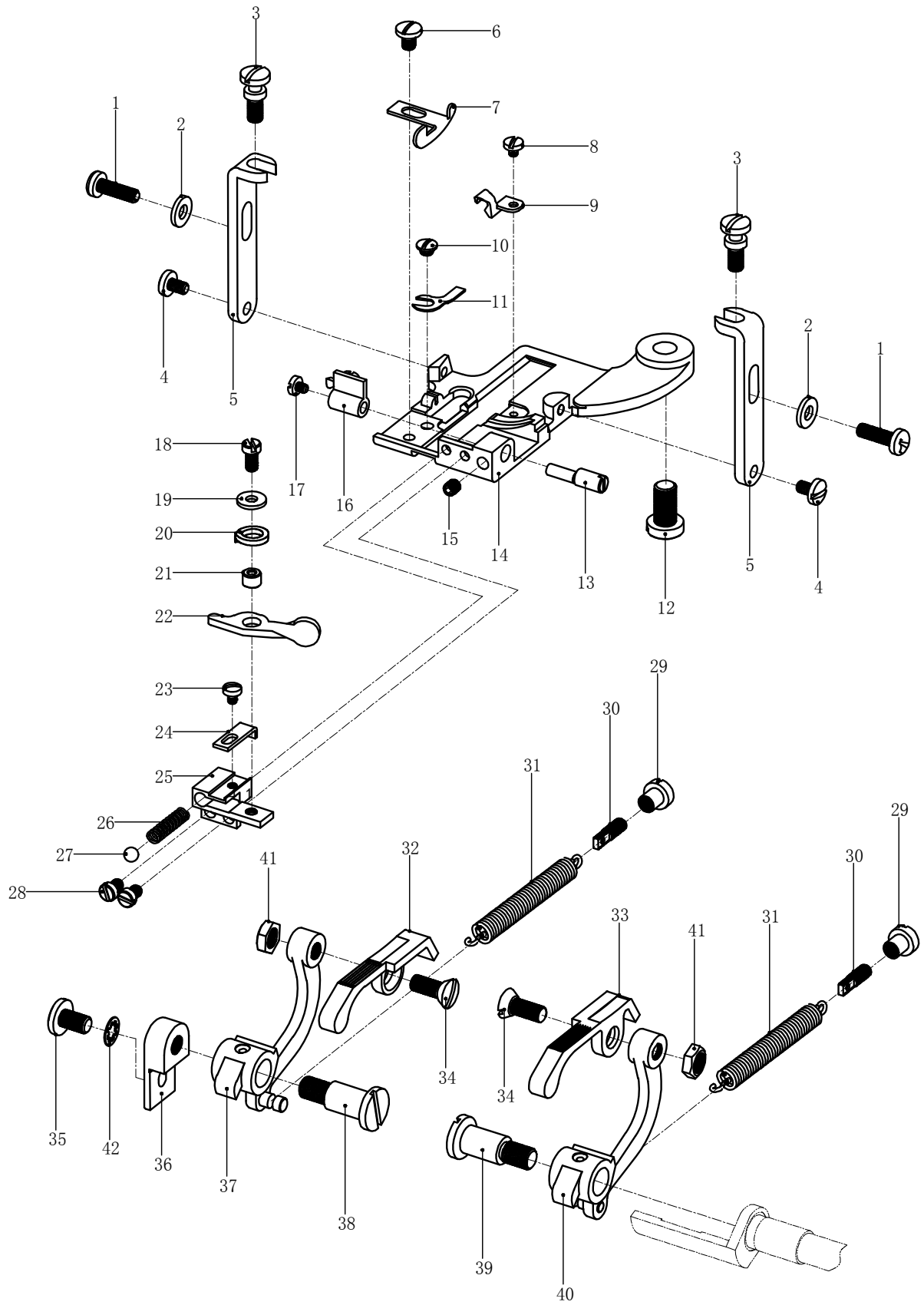


E、针板及压料部分

Presser foot components

序号 Ref.No	代号 Assemble.No	件号 Parts.No	部件名称 Description	数量 Num
1	364E-01	LD00280	挑线引线装置固定螺钉/Screw(9/64-40×11.5)	2
2	364E-02	DQ00005	针板支架垫圈/Washer	2
3	364E-03	LD00520	调节螺丝/Screw(M4×9)	2
4	364E-04	LD00523	螺丝/Screw(1/8-44×5.2)	2
5	364E-05	M06-26	针板支架/Presser Foot Plate Support	2
6	364E-06	LD00540	螺丝/Screw(9/64-40×2.3)	1
7	364E-07	M06-07	导布板/Cloth Guide	1
8	364E-08	LD00522	螺钉/Screw(3/32-56×2.5)	1
9	364E-09	M06-03	链指针/Chaining Finger	1
10	364E-10	LD00540	螺丝/Screw(9/64-40×2.3)	1
11	364E-11	K3-58	挡针板/Needle Guard	1
12	364E-12	LD00525	螺丝/Screw(15/64-28×10)	1
13	364E-13	M06-12	压布板调节销/Cloth Retainer Adjusting Pin	1
14	364E-14	M06-02	针板/Presser Foot Plate	1
15	364E-15	LD00524	螺丝/Screw(9/64-40×4)	1
16	364E-16	M06-10	压布板/Cloth Retainer	1
17	364E-17	LD00522	螺钉/Screw(3/32-56×2.5)	1
18	364E-18	LD00518	螺丝/Screw(1/8-44×6.5)	1
19	364E-19	DQ00005	垫圈/Washer	1
20	364E-20	DQ00010	弹簧垫片/Spring Washer	1
21	364E-21	M06-21	压布板弹簧杆套筒/Cloth Retainer Spring Lever Sleeve	1
22	364E-22	M06-20	压布板弹簧杆/Cloth Retainer Spring Lever	1
23	364E-23	LD00161	螺丝/Screw(3/32-56×3.6)	1
24	364E-24	M06-16	压布板调节板/Cloth Retainer Adjusting Plata	2
25	364E-25	M06-14	压布板调节支架/Cloth Retainer Adjusting Plata Holder	1
26	364E-26	TH00030	压布板弹簧/Cloth Retainer Spring	1
27	364E-27	GZ00001	压布板弹簧钢珠/Cloth Retainer Spring Ball	1
28	364E-28	LD00035	螺丝/Screw(1/8-44×4.5)	2
29	364E-29	A05-34	调节螺母/Nut	2
30	364E-30	A05-33	螺丝/Screw	2
31	364E-31	TH00004	压脚弹簧/Presser Foot Spring	2
32	364E-32	M06-33	压脚（左）/Presser Foot(Left)	1
33	364E-33	M06-39	压脚（右）/Presser Foot(Right)	1
34	364E-34	LD00527	螺丝/Screw(11/64-40×15)	2

E、针板及压料部分
Presser foot components

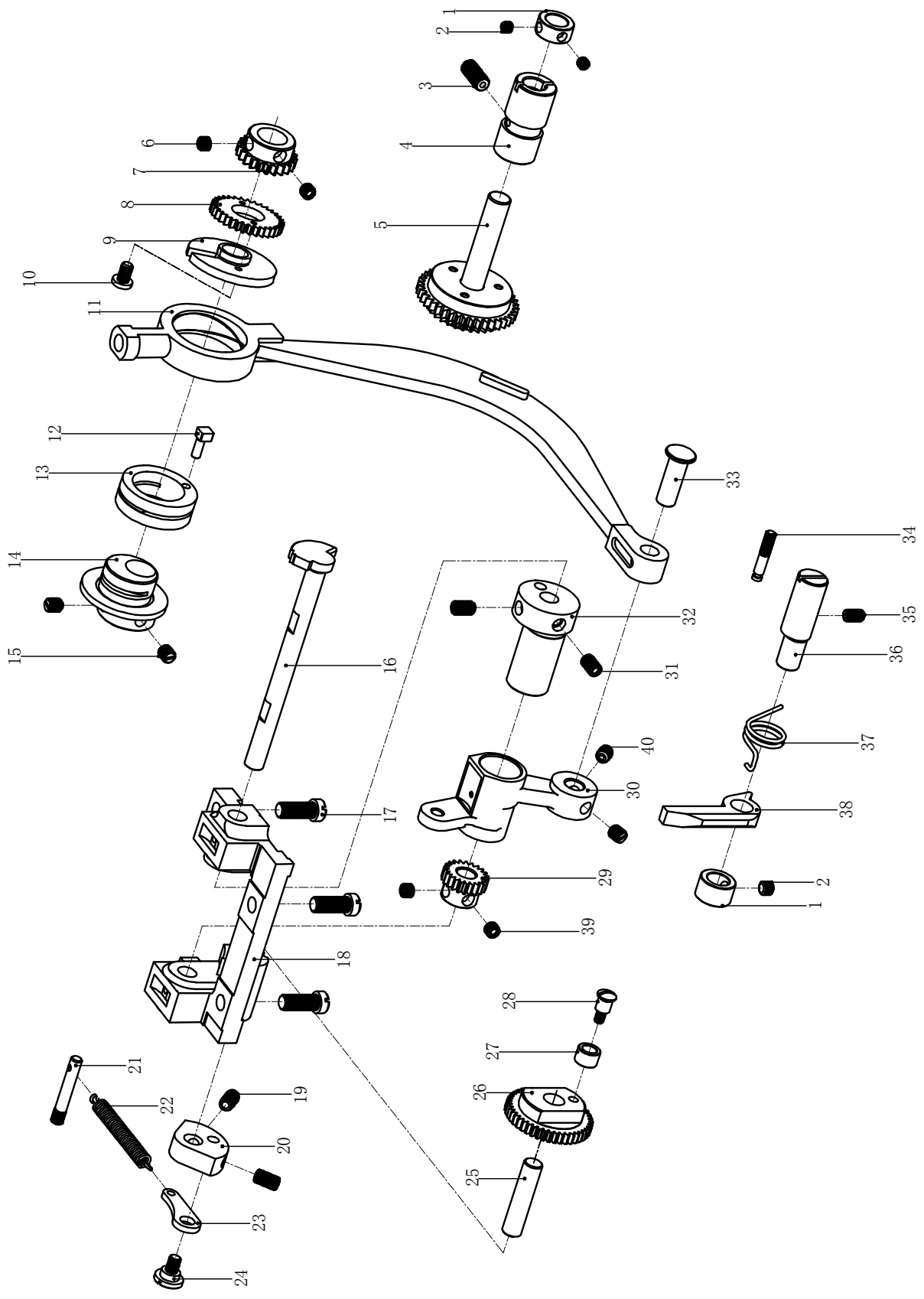


E、针板及压料部分

Presser foot components

序号 Ref.No	代号 Assemble.No	件号 Parts.No	部件名称 Description	数量 Num
35	364E-35	LD00513	螺丝/Screw(3/16-32×8)	1
36	364E-36	M06-30	压脚托架/Presser Foot Lever Holder	1
37	364E-37	M06-36	压脚支架（左）/Presser Foot Lever(Left)	1
38	364E-38	M06-37	压脚螺丝/Screw	1
39	364E-39	M06-37	压脚螺丝/Screw	1
40	364E-40	M06-40	压脚支架（右）/Presser Foot Lever(Right)	1
41	364E-41	LM00001	压脚螺母/Nut	2
42	367A-42	DQ00012	牙齿垫圈/Feed Dog Washer	1

F、起菱盘驱动部分
Ridge forming components

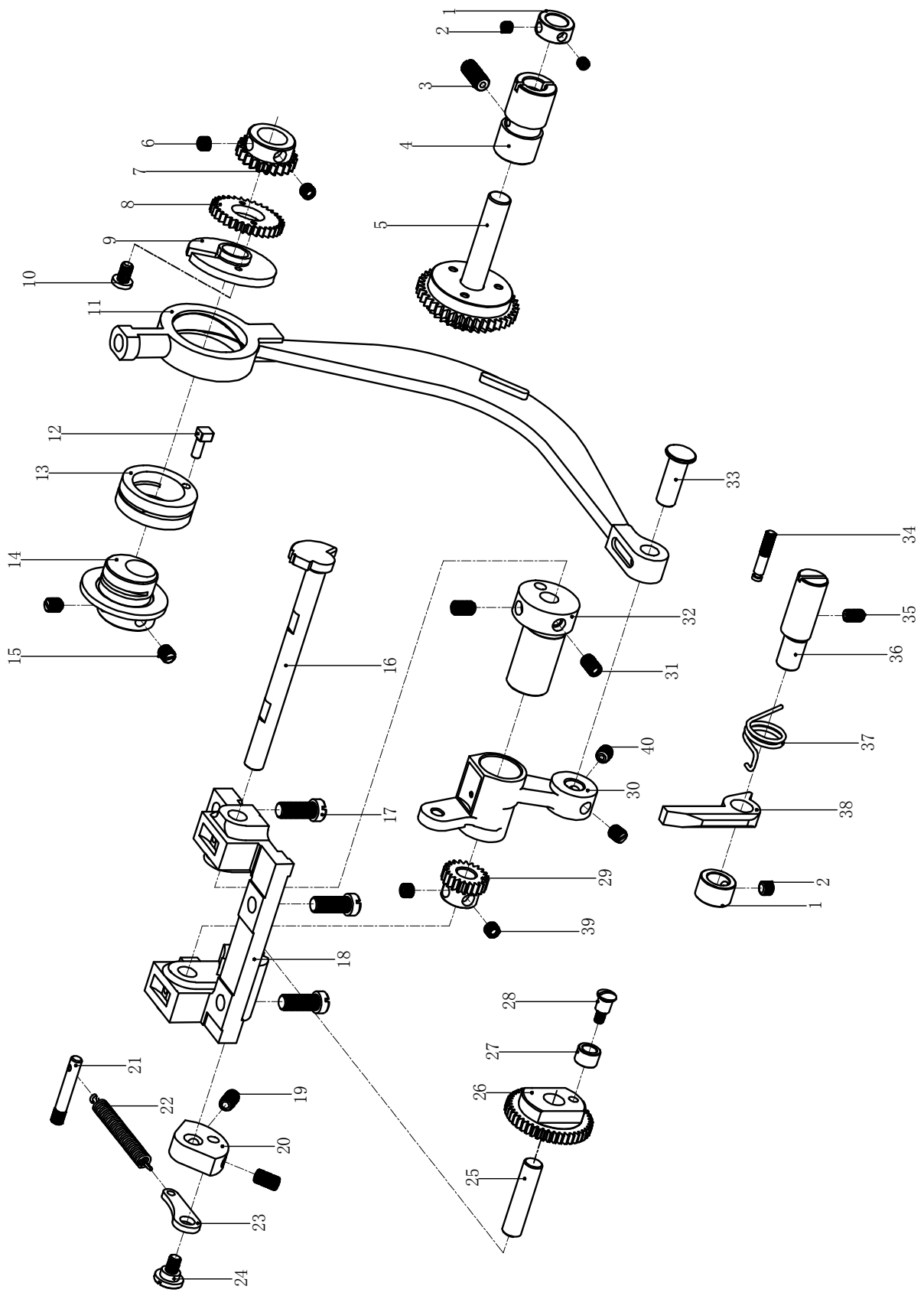


F、起菱盘驱动部分

Ridge forming components

序号 Ref.No	代号 Assemble.No	件号 Parts.No	部件名称 Description	数量 Num
1	364F-01	M07-14	挡圈/Collar	2
2	364F-02	LD00510	螺丝/Screw(11/64-40×4)	3
3	364F-03	LD00020	螺丝/Screw(1/4-24×14.5)	1
4	364F-04	M07-12	减速齿轮偏心套筒/Reduction Gear Eccentric Bushing	1
5	364F-05	M07-11	减速齿轮/Reduction Gear	1
6	364F-06	LD00036	内紧定/Screw(7/32-32×3.6)	2
7	364F-07	M07-09	主轴齿轮(小)/Main Shaft Gear(Small)	1
8	364F-08	M07-07	主轴齿轮(大)/Main Shaft Gear(Large)	1
9	364F-09	M07-06	主轴齿轮支架/Main Shaft Gear Sypport	1
10	364F-10	LD00035	螺丝/Screw(1/8-44×4.5)	2
11	364F-11	M07-19	大连杆/Ridge Forming Plate Connecting Rod	1
12	364F-12	M07-05	跳缝偏心环销/Skipstitch Eccentric Pin	1
13	364F-13	M07-04	跳缝偏心环/Skipstitch Eccentric	1
14	364F-14	M07-01	主轴偏心/Ridge Forming Plate Eccentric	1
15	364F-15	LD00143	内紧定/Screw(15/64-28×6)	2
16	364F-16	M07-23	摆杆轴/Ridge Forming Plate Oscillating Shaft	1
17	364F-17	LD00037	螺丝/Screw(1/4-24×16)	3
18	364F-18	M07-21	摆杆支架/Ridge Forming Basement	1
19	364F-19	LD00038	内紧定/Screw(7/32-32×9)	2
20	364F-20	M07-32	挡圈/Collar	1
21	364F-21	M05-01	齿轮弹簧销/Spring Pin	1
22	364F-22	TH00033	齿轮弹簧/Gear Spring	1
23	364F-23	M07-34	齿轮弹簧连杆/Gear Spring Connecting Link	1
24	364F-24	M07-35	螺丝/Screw	1
25	364F-25	M07-29	齿轮大/Ridge Forming Plate Gear(Large)	1
26	364F-26	M07-29*1*2	齿轮销/Ridge Forming Plate Gear Pin	1
27	364F-27	M07-30	齿轮滚筒/Ridge Forming Plate Gear Roller	1
28	364F-28	M07-31	螺丝/Screw	1
29	364F-29	M07-27	齿轮/Ridge Forming Plate Gear(Small)	1
30	364F-30	M07-26	摆杆/Ridge Forming Plate Oscillating Lever	1
31	364F-31	LD00038	内紧定/Screw(7/32-32×9)	2
32	364F-32	M07-24	摆杆偏心套筒/Ridge Forming Plate Oscillating Eccentric	1
33	364F-33	M07-20	连杆销/Ridge Forming Plate Connecting Rod Pin	1
34	364F-34	M07-43	轴门弹簧销/Locking Latch Spring Pin	1

F、起菱盘驱动部分
Ridge forming components

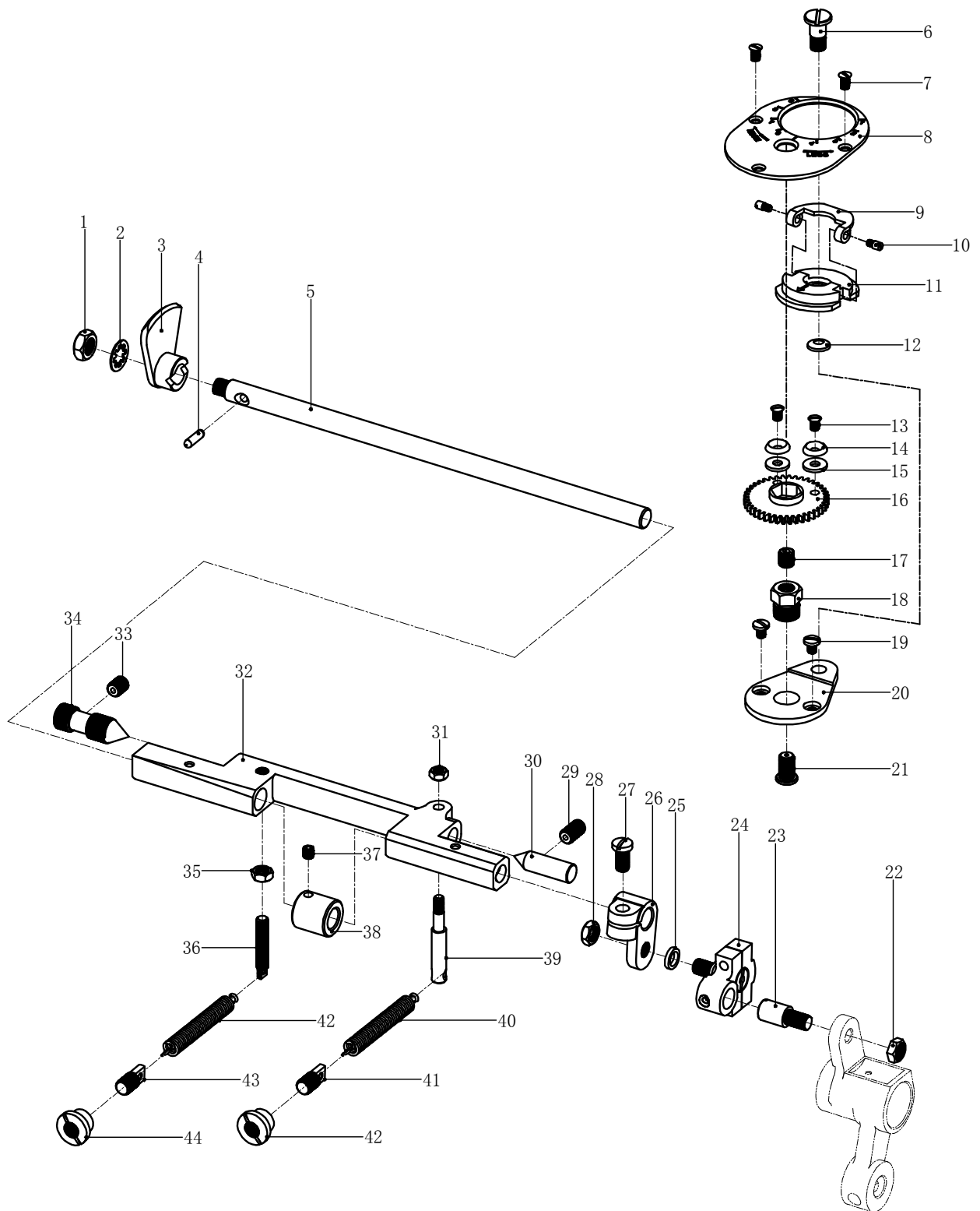


F、起菱盘驱动部分

Ridge forming components

序号 Ref.No	代号 Assemble.No	件号 Parts.No	部件名称 Description	数量 Num
35	364F-35	LD00084	内紧定/Screw(M4×8)	1
36	364F-36	M07-41	轴门销/Locking Latch Pin	1
37	364F-37	M07-40	轴门弹簧/Locking Latch Pin	1
38	364F-38	M07-39	摆动轴门/Oscillating Shaft Locking Latch	1
39	364F-39	LD00041	螺丝/Screw(7/32-32×4.5)	2
40	364F-40	LD00018	螺丝/Screw(7/32-32×7)	2

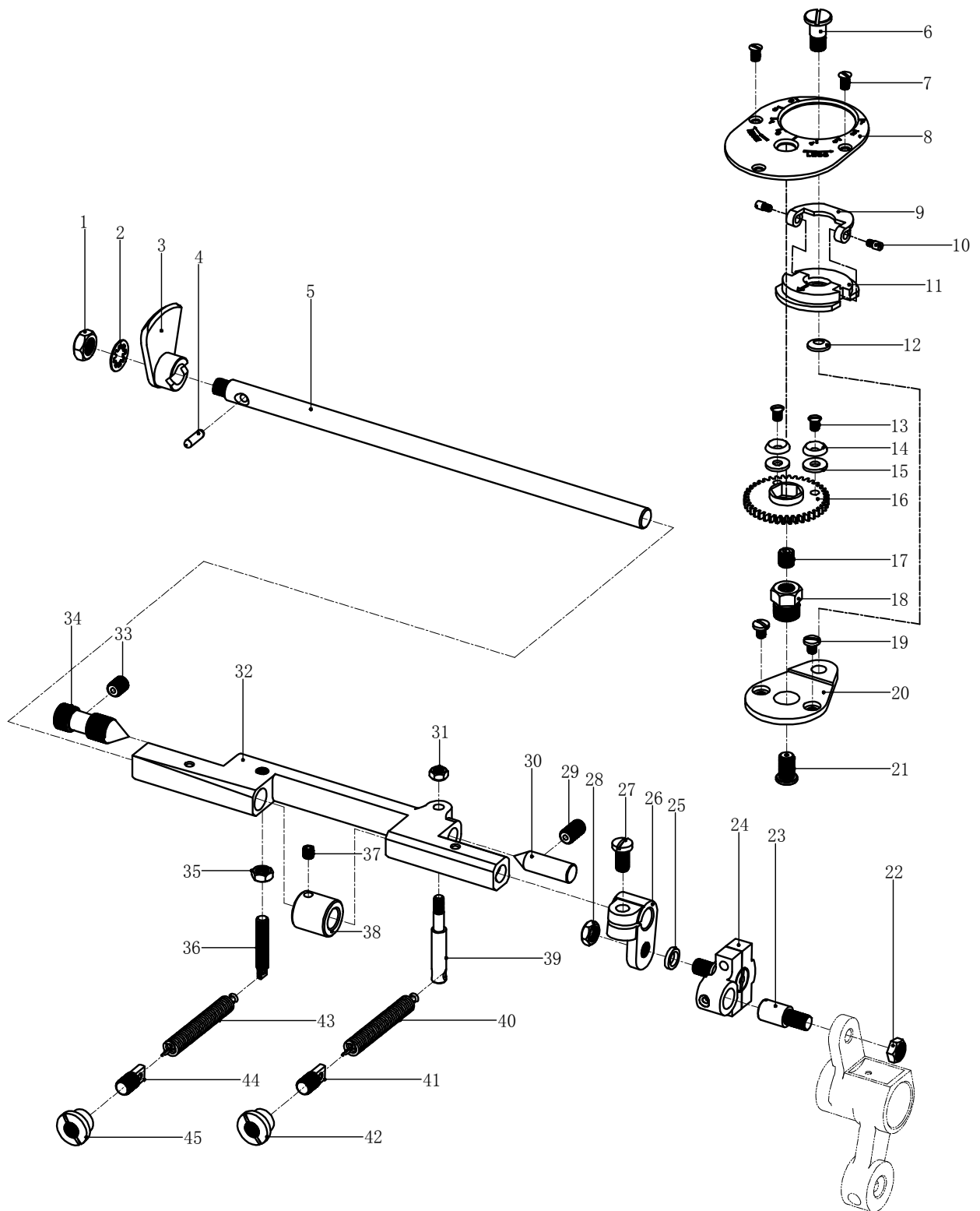
G、起菱盘传动及调节部分
Ridge transmission & adjust components



G、起菱盘传动及调节部分
Ridge transmission & adjust components

序号 Ref.No	代号 Assemble.No	件号 Parts.No	部件名称 Description	数量 Num
1	364G-01	LM00002	螺母/Nut	1
2	364G-02	DQ00006	垫片/Washer	1
3	364G-03	M08-44	起菱盘/Ridge Forming Plate	1
4	364G-04	A05-04	销子/Pin	1
5	364G-05	A05-05	起菱盘轴/Ridge Forming Plate Shaft	1
6	364G-06	M08-03	螺丝/Screw	1
7	364G-07	LD00042	螺丝/Screw(1/8-44×5.6)	3
8	364G-08	M08-01	起菱盘调节刻度板/Ridge Form Regulator Graduation Plate	1
9	364G-09	M08-06	起菱盘调节器旋钮/Ridge Forming Regulator Handle	1
10	364G-10	LD00043	螺丝/Screw(3/32-56×3)	2
11	364G-11	M08-05-1	起菱盘调节器/Ridge Forming Regulator	1
12	364G-12	DQ00017	锥形弹簧垫片/Conical Spring Washer	1
13	364G-13	LD00042	螺丝/Screw(1/8-44×5.6)	2
14	364G-14	M08-12	止动垫片/Stop Washer	2
15	364G-15	DQ00005	垫圈/Washer	4
16	364G-16	M08-13-1	调节齿轮/Regulator Gear	1
17	364G-17	M08-14	内紧定/Screw(7/32-32×6.4)	1
18	364G-18	M08-15	螺丝/Screw(3/8-32×8.5)	1
19	364G-19	LD00045	螺丝/Screw(1/8-44×4.5)	2
20	364G-20	M08-09	起菱盘调节器支架/Ridge Forming Regulator Flange	1
21	364G-21	M08-16	调节螺丝/Adjusting Screw(7/32-32×8.7)	1
22	364G-22	LM00004	螺母/Nut	1
23	364G-23	M08-17	连接销/Connecting Pin	1
24	364G-24	M08-19	起菱盘连杆/Ridge Forming Plate Connecting Link	1
25	364G-25	DQ00014	垫圈/Washer	1
26	364G-26	M08-24	起菱盘轴连接块/Ridge Forming Plata Shaft Lever	1
27	364G-27	LD00052	螺丝/Screw(3/16-32×11.5)	1
28	364G-28	LM00004	螺母/Nut	1
29	364G-29	LD00038	内紧定/Screw(7/32-32×9)	1
30	364G-30	A05-16	锥形销/Pivot Bearing	1
31	364G-31	LM00007	螺母/Nut	1
32	364G-32	M08-26	起菱盘调节柄/Ridge Forming Plate Cradle	1
33	364G-33	LD00018	内紧定/Screw(7/32-32×7)	1
34	364G-34	M08-29	锥形螺丝/Pivot Bearing Screw	1

G、起菱盘传动及调节部分
Ridge transmission & adjust components

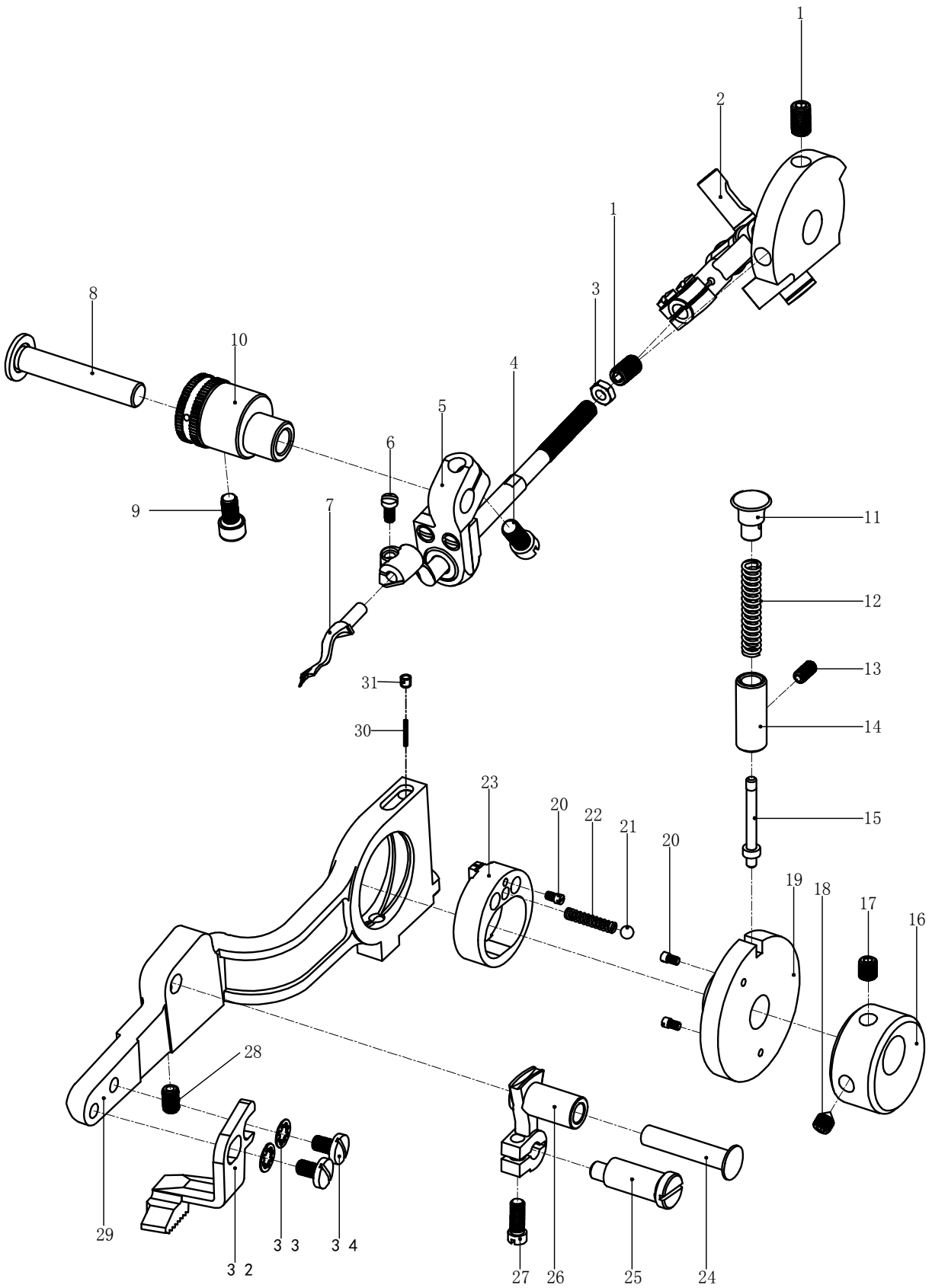


G、起菱盘传动及调节部分

Ridge transmission & adjust components

序号 Ref.No	代号 Assemble.No	件号 Parts.No	部件名称 Description	数量 Num
35	364G-35	LM00001	螺母/Nut	1
36	364G-36	M08-37	螺丝/Screw	1
37	364G-37	LD00004	内紧定/Screw(M4×4)	1
38	364G-38	M08-41	挡圈/Collar	1
39	364G-39	M08-32	螺丝/Screw	1
40	364G-40	TH00034	弹簧/Spring	1
41	364G-41	A05-19	螺丝/Screw	1
42	364G-42	A05-20	螺母/Nut	1
43	364G-43	TH00035	弹簧/Spring	1
44	364G-44	A05-33	螺丝/Screw	1
45	364G-45	A05-34	螺母/Nut	1

H、挑线及送料部分
 Looper & feed components

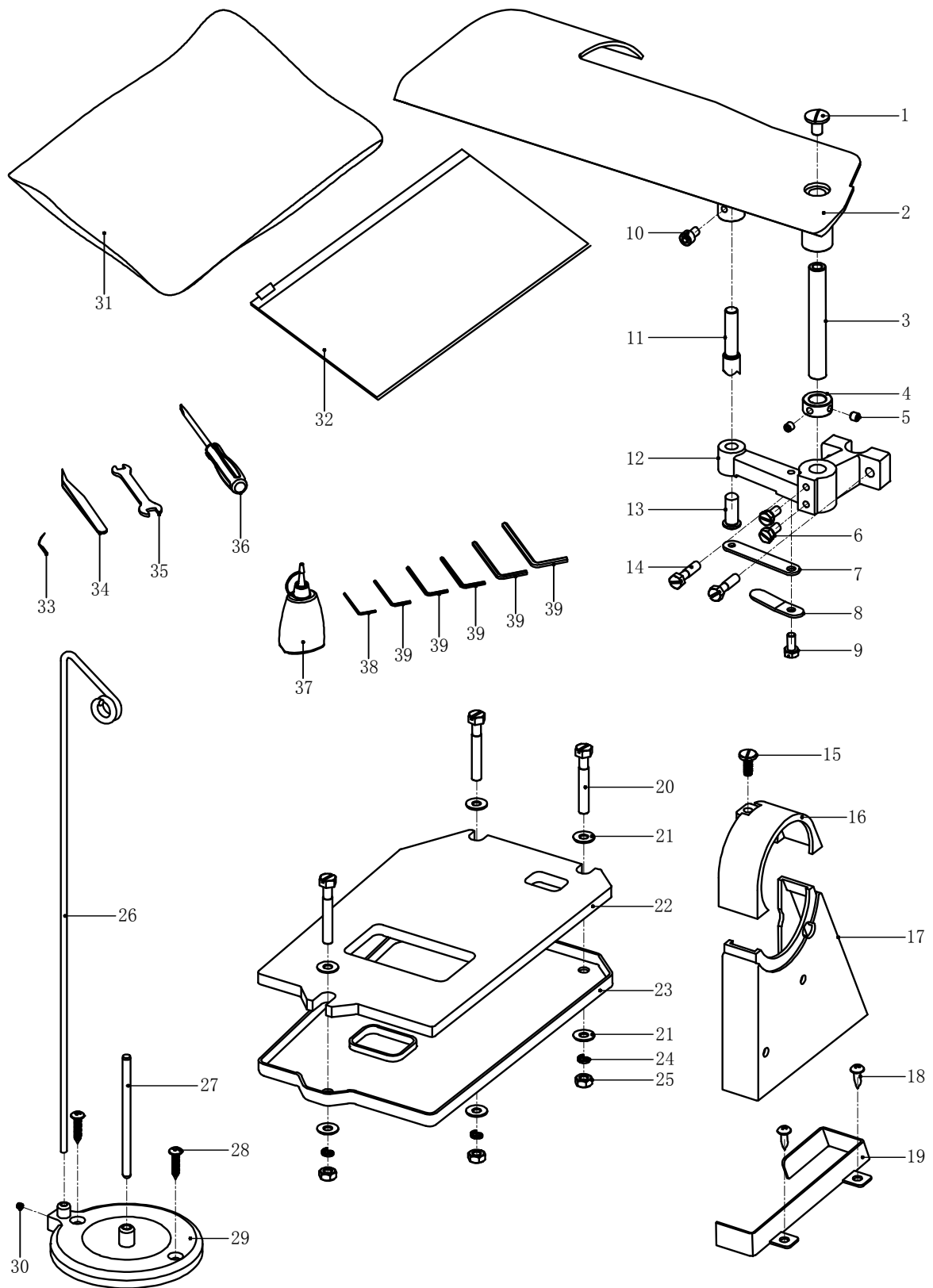


H、挑线及送料部分

Looper & feed components

序号 Ref.No	代号 Assemble.No	件号 Parts.No	部件名称 Description	数量 Num
1	364H-01	LD00063	内紧定/Screw(15/64-28×10)	2
2	364H-02	A04-01	打环器曲柄/Looper Drive Crank Assembly	1
3	364H-03	LM00004	螺母/Nut	1
4	364H-04	LD00517	螺钉/Screw(7/32-32×11.5)	1
5	364H-05	M09-15	打环器针/Looper Carrier	1
6	364H-06	LD00518	螺钉/Screw(1/8-44×6.5)	1
7	364H-07	M09-21	挑线叉/Looper	1
8	364H-08	M09-22	偏心销子/Eccentric Pin	1
9	364H-09	LD00519	螺丝/Screw(15/64-28×30)	1
10	364H-10	M09-27	偏心套筒//Eccentric Sleeve	1
11	364H-11	M10-02	按钮/Feed Regulating Pushbutton	1
12	364H-12	TH00002	按钮弹簧/Pushbutton Spring	1
13	364H-13	LD00084	内紧定/Screw(M4×8)	1
14	364H-14	M10-04	按钮套筒/Pushbutton Spring Sleeve	1
15	364H-15	M10-05	按钮顶杆/Pushbutton Shaft	1
16	364H-16	M10-07	平衡块/Main Shaft Balance Weight	1
17	364H-17	LD00041	内紧定/Screw(7/32-32×4.5)	1
18	364H-18	LD00038	内紧定/Screw(7/32-32×9)	1
19	364H-19	A03-18-C	针距调节器/Feed Regulator	1
20	364H-20	LD00538	螺丝/Screw(3/32-56×3.3)	3
21	364H-21	GZ00001	钢珠/Ball	1
22	364H-22	TH00001	钢珠弹簧/Ball Spring	1
23	364H-23	A03-18-B	针距调节偏心环/Feed Regulating Rccentric	1
24	364H-24	M10-20	送料杆曲柄销/Feed Link Pin	1
25	364H-25	M10-22	送料杆偏心销/Feed Link Eccentric Pin	1
26	364H-26	M10-19	送料杆曲柄/Feed Link	1
27	364H-27	LD00046	螺丝/Screw(3/16-32×11)	1
28	364H-28	LD00099	内紧定/Screw(M5×8)	1
29	364H-29	A03-27	送料杆/Feed Lever	1
30	364H-30	A03-28	油线/Oil Line	2
31	364H-31	A03-29-A	牙架帽销/Rack cap pin	2
32	364H-32	A03-30	牙齿/Feed Dog	1
33	364H-33	DQ00012	牙齿垫圈/Feed Dog Washer	2
34	364H-34	LD00513	牙齿螺钉/Feed Dog Set Screw	2

I、附件部分
Adjunct components

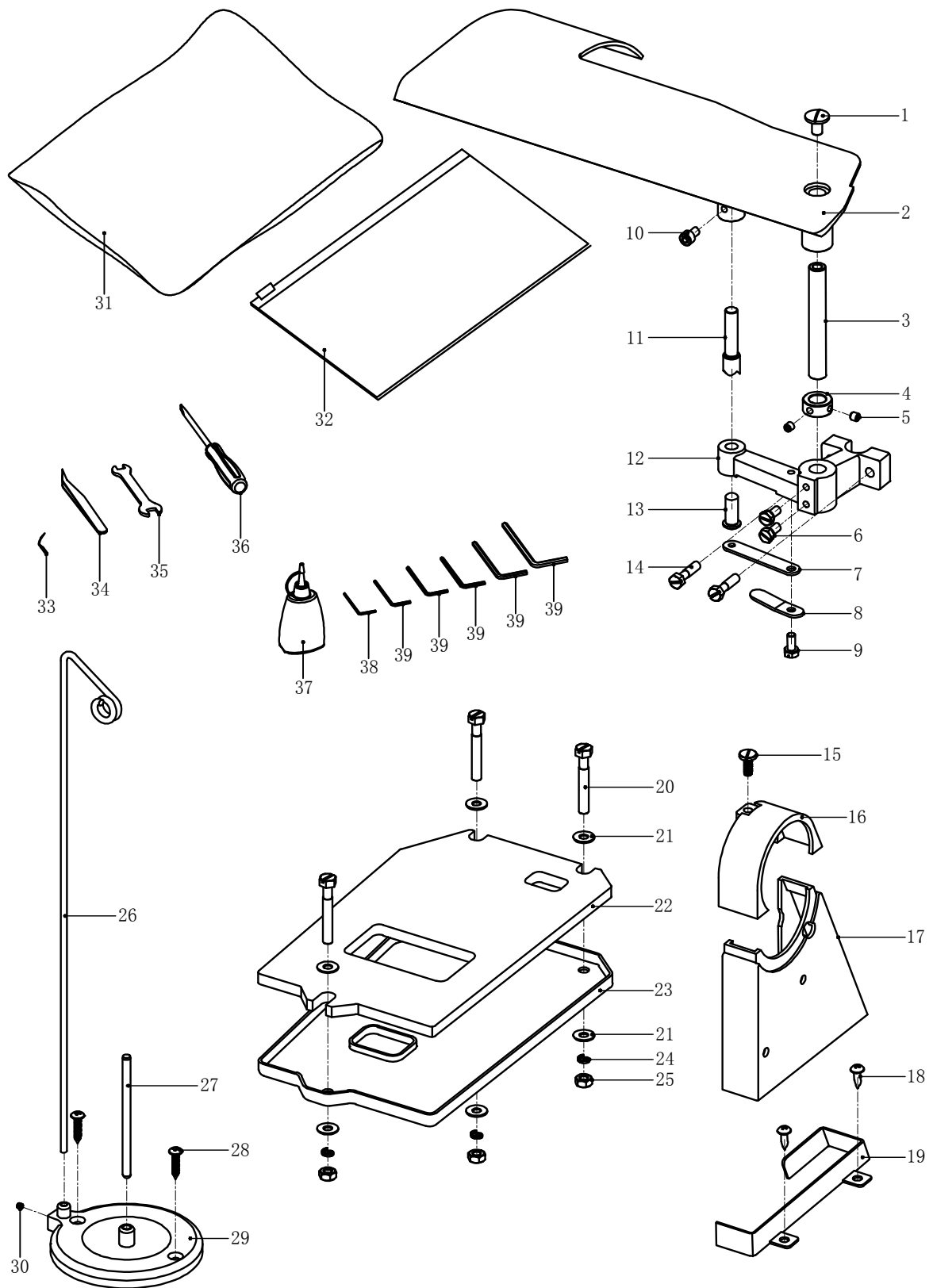


I、附件部分

Adjunct components

序号 Ref.No	代号 Assemble.No	件号 Parts.No	部件名称 Description	数量 Num
1	364J-01	LD00534	面板螺钉/Screw(5/16-24×13)	1
2	364J-02	M01-16	面板/Cloth Plate	1
3	364J-03	A08-10	面板轴/Cloth Plate Hinge Pin	1
4	364J-04	A08-12	面板轴套筒/Collar	1
5	364J-05	LD00003	内紧定/Screw(M6×6)	2
6	364J-06	LD00529	限位连杆螺钉/Screw(15/64-28×17)	2
7	364J-07	M01-28	面板弹簧(大)/Cloth Plate Spring(Large)	1
8	364J-08	M01-29	面板弹簧(小)/Cloth Plate Spring(Small)	1
9	364J-09	LD00016	短六角螺钉/Screw(15/64-28×11.5)	1
10	364J-10	LD00535	内六角螺钉/Screw(M6×14)	1
11	364J-11	A08-02	面板固定销/Cloth Plate Latch Pin	1
12	364J-12	M01-22	面板支架/Cloth Plate Hinge	1
13	364J-13	A08-05	面板支架弹簧销/Cloth Plate Spring Pin	1
14	364J-14	LD00013	螺丝/Screw(1/4-28×16)	2
15	364J-15	LD00017	螺丝/Screw(7/32-32×12.5)	1
16	364J-16	M01-31	上皮带盖/Belt Cover(Upper)	1
17	364J-17	FJ3-1-1	皮带罩/Belt Cover(Middle)	1
18	364J-18	FJ8-15	中号自动螺丝/Screw	2
19	364J-19	FJ5-6	皮带罩固定架/Belt Cover(Lower)	1
20	364J-20	FJ1-13	螺丝/Screw	3
21	364J-21	DQ00029	垫片/Washer	6
22	364J-22	FJ3-3	羊毛垫/Felt Pad	1
23	364J-23	FJ1-39	底盘/Oil Reciever	1
24	364J-24	DQ00014	弹簧垫片/Spring Washer	3
25	364J-25	LM00006	螺母/Nut	3
26	364J-26	FJ4-15	导线架/Thread Hanger	1
27	364J-27	FJ1-40	线轴销/Spool Pin	1
28	364J-28	FJ1-16	长自攻螺钉/Screw	2
29	364J-29	FJ4-15-1	线轴底座/Thread Stand	1
30	364J-30	LD00004	内紧定/Screw(M4×4)	1
31	364J-31	FJ9-11	袋子/Bag	1
32	364J-32	FJ-D-12	袋子/Bag	1
33	364J-33	BZ1-8-1	机针/Needle(System:29BL 11#)	1
34	364J-34	FJ4-8	镊子/Thread Tweezers	1

I、附件部分
Adjunct components



I、附件部分

Adjunct components

序号 Ref.No	代号 Assemble.No	件号 Parts.No	部件名称 Description	数量 Num
35	364J-35	FJ4-3	开口扳手/Wrench	1
36	364J-36	FJ8-7	螺丝刀/Screwdriver	1
37	364J-37	FJ7-28	油壶/Oiler	1
38	364J-38	FJ4-10	内六角扳手/Hexagonal Wrench	1
39	364J-39	FJ4-11	内六角扳手/Hexagonal Wrench	1