

Instruction manual

Belt cutter

SK118

GLOBAL
SK 118



Index:

1. Safety instructions
2. Accessories
3. Changing the knife and adjusting distance
4. Placing the knives and spacers
5. Configuring knife depth
6. Connecting and roller drive switch
7. Picture front and top view
8. Picture left side
9. Picture right side

1. Safety instructions

This device complies with the prescribed safety regulations. Using this machine for a purpose it is not intended for can lead to personal or material damage. For safe use of the machine, please oblige the following safety instructions:

- Before every usage check the device for visible exterior damage on the casting, the power cable and the plug.
- Do not use the machine when damaged.
- When the power cable is damaged, this can only be replaced by the producer, it's customer service or a qualified person to avoid any hazards.
- Reparations can only be carried out by an expert or specialist.
- Incompetent reparations can cause considerable hazards for the user. Furthermore, the guarantee expires if the other party and/or third parties engaged by him use the supplied product incompetently.
- Reparation of the machine during the warrantee period can only be executed by the supplier, otherwise the warrantee will not be valid anymore for future damages.
- Defect components may only be replaced with original spare parts. Only original parts are guaranteed to meet the official safety requirements.
- This machine may not be used by children. Keep the machine and power cable away from children.
- Children need to be supervised, to avoid them playing with the machine.
- The machine is not designed to be used with an external timer or separate remote control.
- Always remove the plug from the socket by pulling the plug's casting, never pull the power cable itself.
- Before plugging in the machine always check the connection data (voltage and frequency) on the type plate and compare this with your power grid, this needs to correspond to avoid damage to the machine.
- Do not use the machine in case of a damaged power cable or plug.
- Get an authorized expert to install a new power cable in order to continue operations on the machine.
- Do not open the casting of the machine in any case. When electrically conducted connections are touched and the electrical and mechanical montage is altered, electric shocks can occur.
- Never touch electrically charged parts. These can cause electrical shocks which could even lead to death.
- Never transport the machine by the power cable.
- Never transport the machine while still in usage (i.e. with the power on/plugged in).
- Packing materials are not to be used as toys because of the choking hazard.
- Do not touch the cutting edge of the blade. This is extremely sharp and can cause severe injury.
- When the machine is not in use or in case of cleaning the machine, always make sure it is powered-off and not connected to the power grid.
- Always check if the knife is covered.

Please follow these instructions when unpacking the machine:

- Remove the machine from the box.
- Remove all components from their packaging.

Installation of the machine needs to be executed in a place which complies to the following requirements:

- The machine needs to be placed on a solid, flat, horizontal and slip-resistant surface with enough bearing strength.
- Always fortify the machine with the braces supplied.
- Never install the machine in the presence of children.
- The sharp knife can dismember body parts, especially your fingers. Therefore, never put your hand in the machine.

2. Accessories



1x Spanner

3x Allen-keys

2x Brace to secure machine to the work top

1x Wrench to replace nylon roll

You will also need:

Crosshead screwdriver

Sheet of paper to adjust the dept of the knives



Also supplied:

Knives, spacers in several thickness sizes and a leather (end-)guide

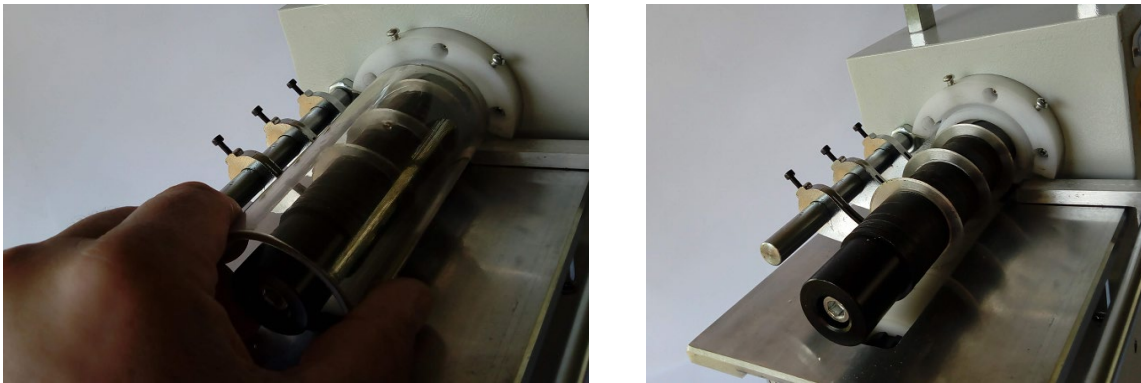
3. Changing the knife and adjusting distance

Always remove the plug from the socket before removing the protective cover. Do not turn on the machine before the protective cover is mounted again.

Remove the protective cover by loosening the two crosshead screws, do this in a way so they do not have to be removed completely.



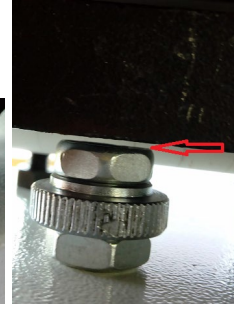
Remove the protective cover by prying carefully



After this you remove the leather guides, by unscrewing the allen screws, after that pull the leather guides and slide them sideways to remove them from the cylinder.



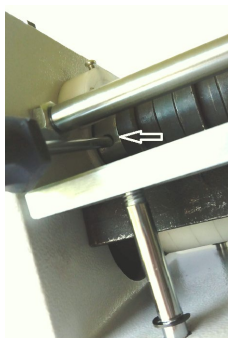
Now lower the nylon pressure roll by unscrewing the lower bolt with a wrench, after this keep turning the hand wheel until the nylon roll is detached from the blade.



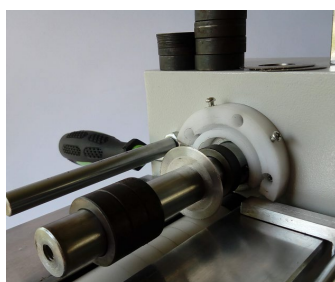
As soon as the blades are detached from the nylon roll you take the big allen-key and twist the closure cap (clockwise) from the knife spindle until it comes loose.



Before unscrewing the knife spindle cap, you can block the spindle with a screwdriver.



Now you can remove the spacers and the knives
Attention, the knives can be sharp!

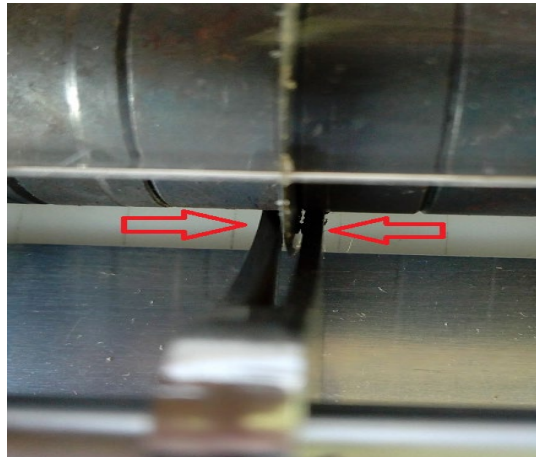


4. Placing the knives and spacers

Now you can place the knives and spacers back on the desired width.

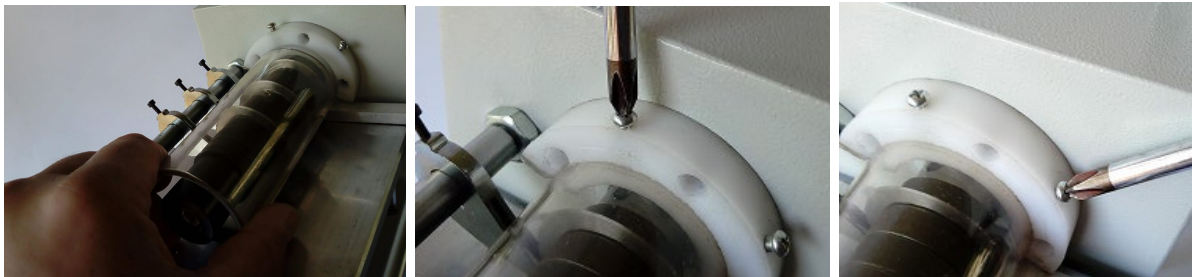
Put the knife spindle cap back on its place and twist the screw left (counter-clockwise)

Now you place a leather guide with every knife you mount, the guide wraps around the knife and the point has to be placed against the spindle on the bottom so the leather that sticks to the knife will come loose.



Finally you re-mount the protective cover by placing this in the opening of the white nylon ring.

Light prying can be necessary (be careful not to break it), after this tighten the screws, if you feel light resistance when screwing it is sufficient.



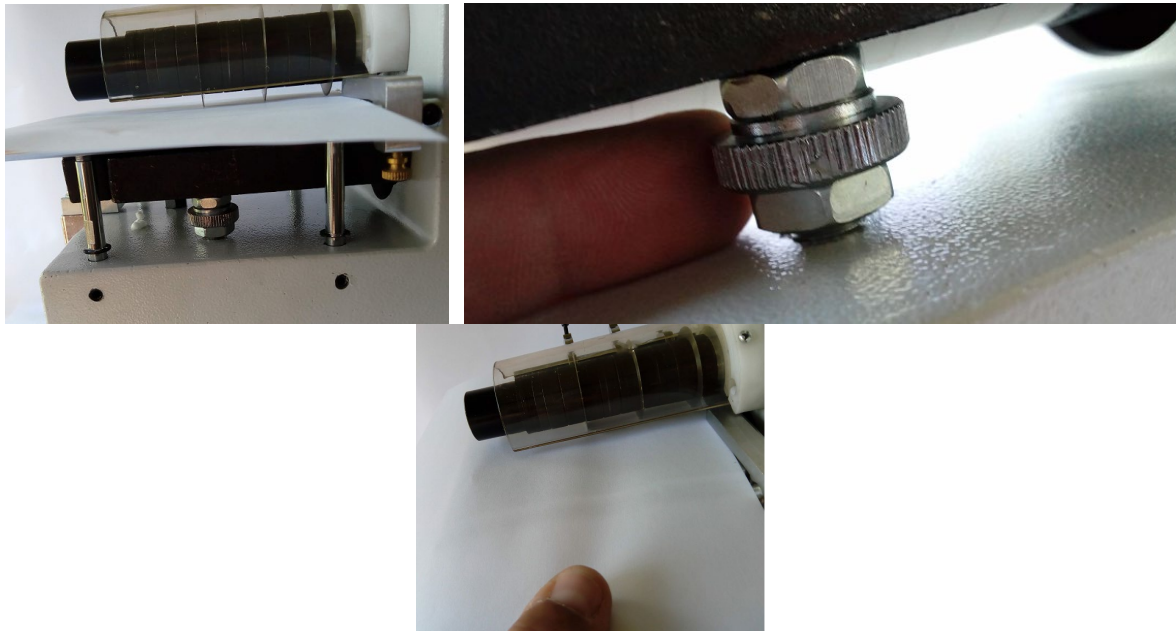
5. Configuring knife depth

In order to configure the knife depth you use the serrated nut, for bending you use the lower nut and wrench size 17.

Also make sure to have a piece of paper (can be printed on) on hand.

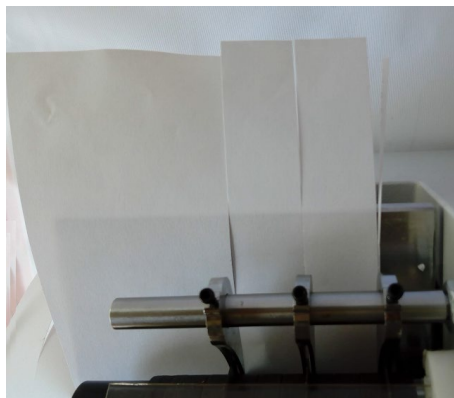
Place a sheet of paper on the cover plate in a way that the paper is between the knives and nylon roll, after this you lift the frame of the nylon roll by twisting the adjusting nut while moving the paper back and forward, you will notice that the paper will start to move tougher gradually.

After this, slowly lift the frame of the nylon roll up by twisting the serrated nut until you notice that you can not move the paper anymore.



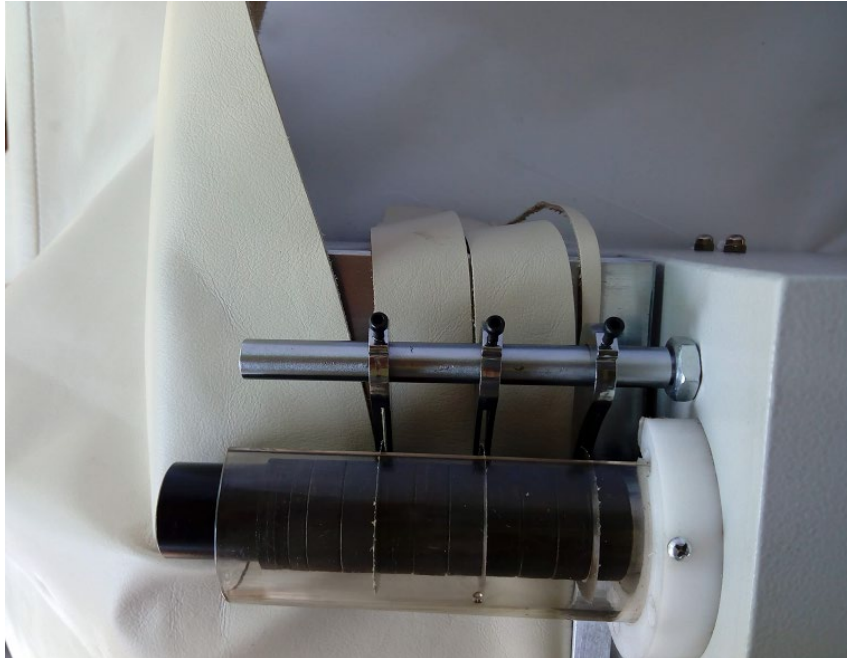
Now you need to test it, pay attention if the knives are cutting the paper properly. If this is not the case, gradually twist the serrated nut to the left while stopping now and then to see if the paper is being cut.

Do not cut too deep, else you will damage the nylon roll.



Now tightly screw the nut under the serrated nut with wrench 17, please pay attention that the screw cannot turn downward anymore, this will withheld the knife from cutting the paper/leather.

If you follow these instruction carefully, the belt cutter should work optimally now.



6. Connecting

Now you can connect the operator panel on the right side of the machine with a coupling plug, pay attention that the blue part of the plug only plugs-in on one way. If the plug is connected correctly you can tighten the security ring which prevents the plug from falling out.

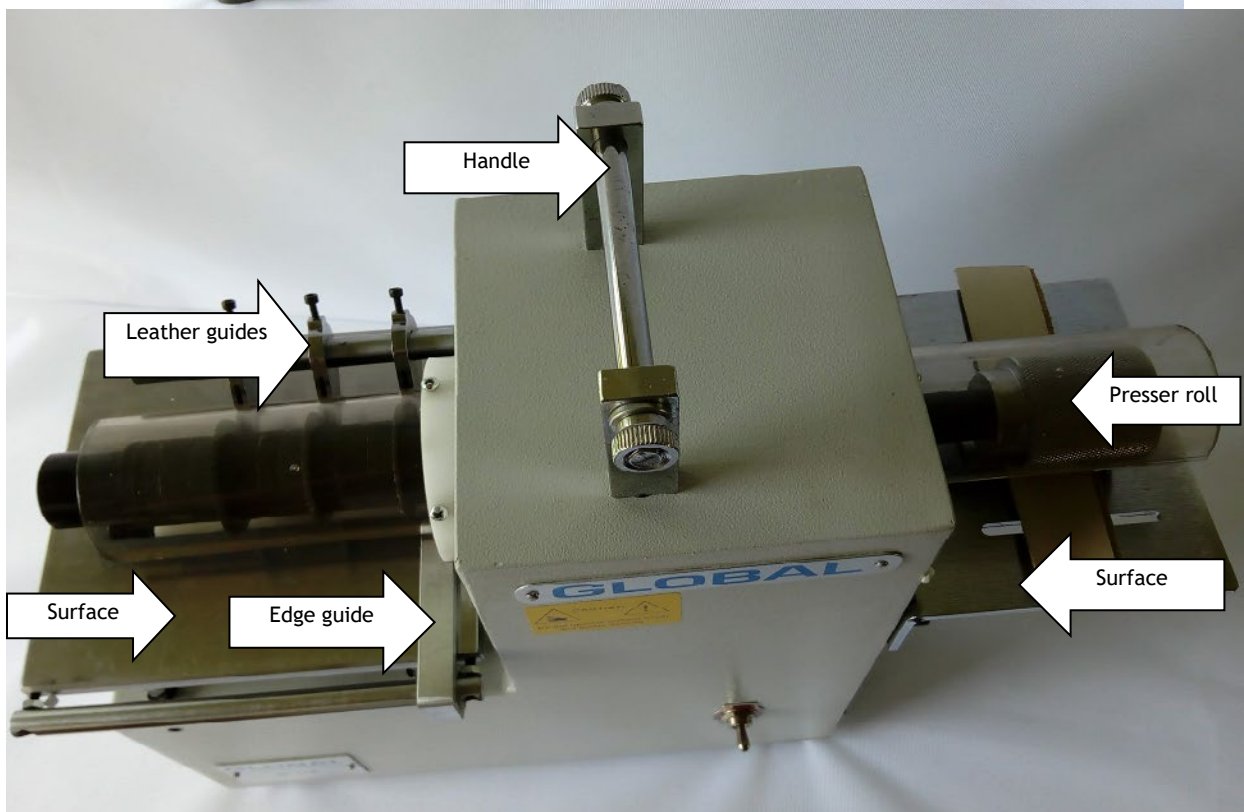
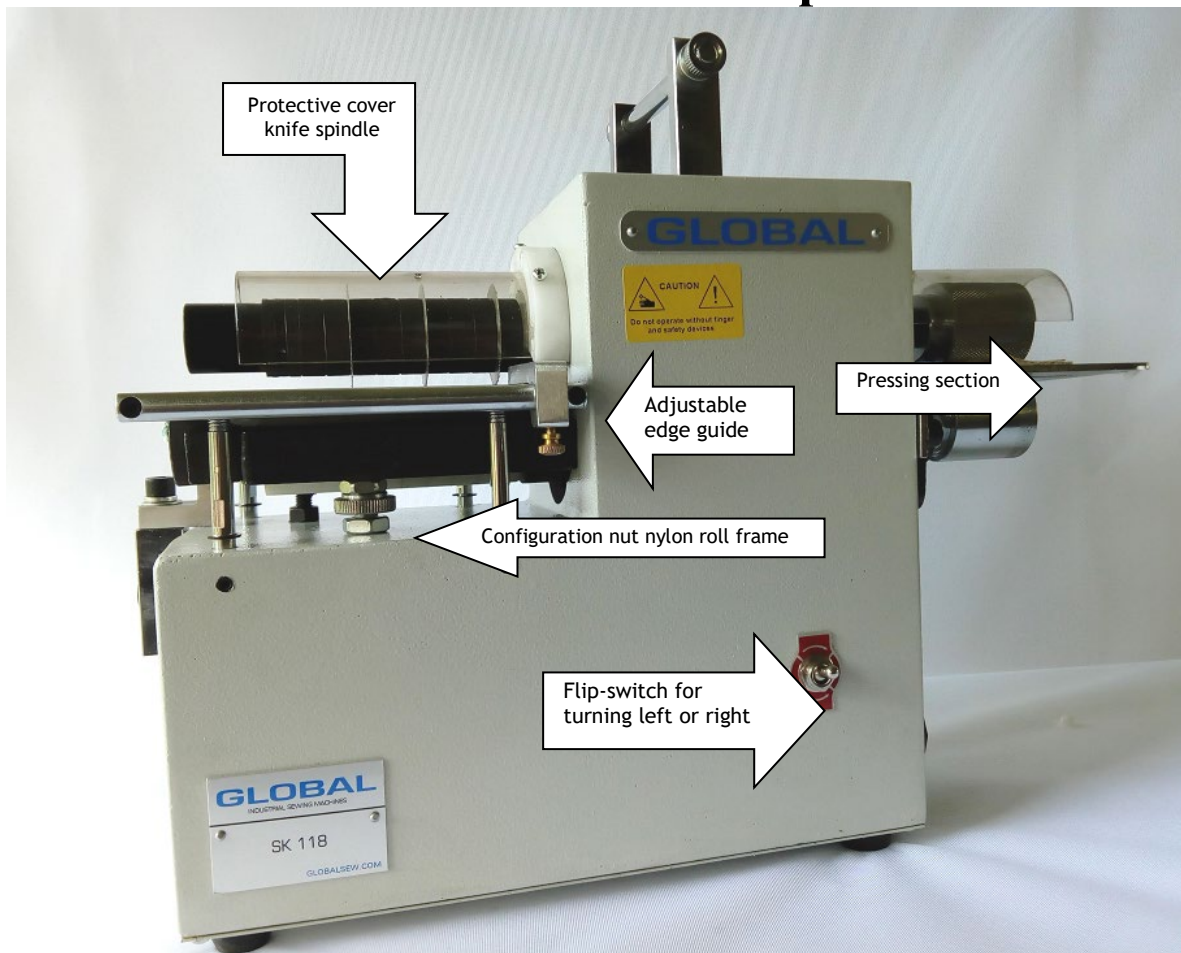


Roller drive switch

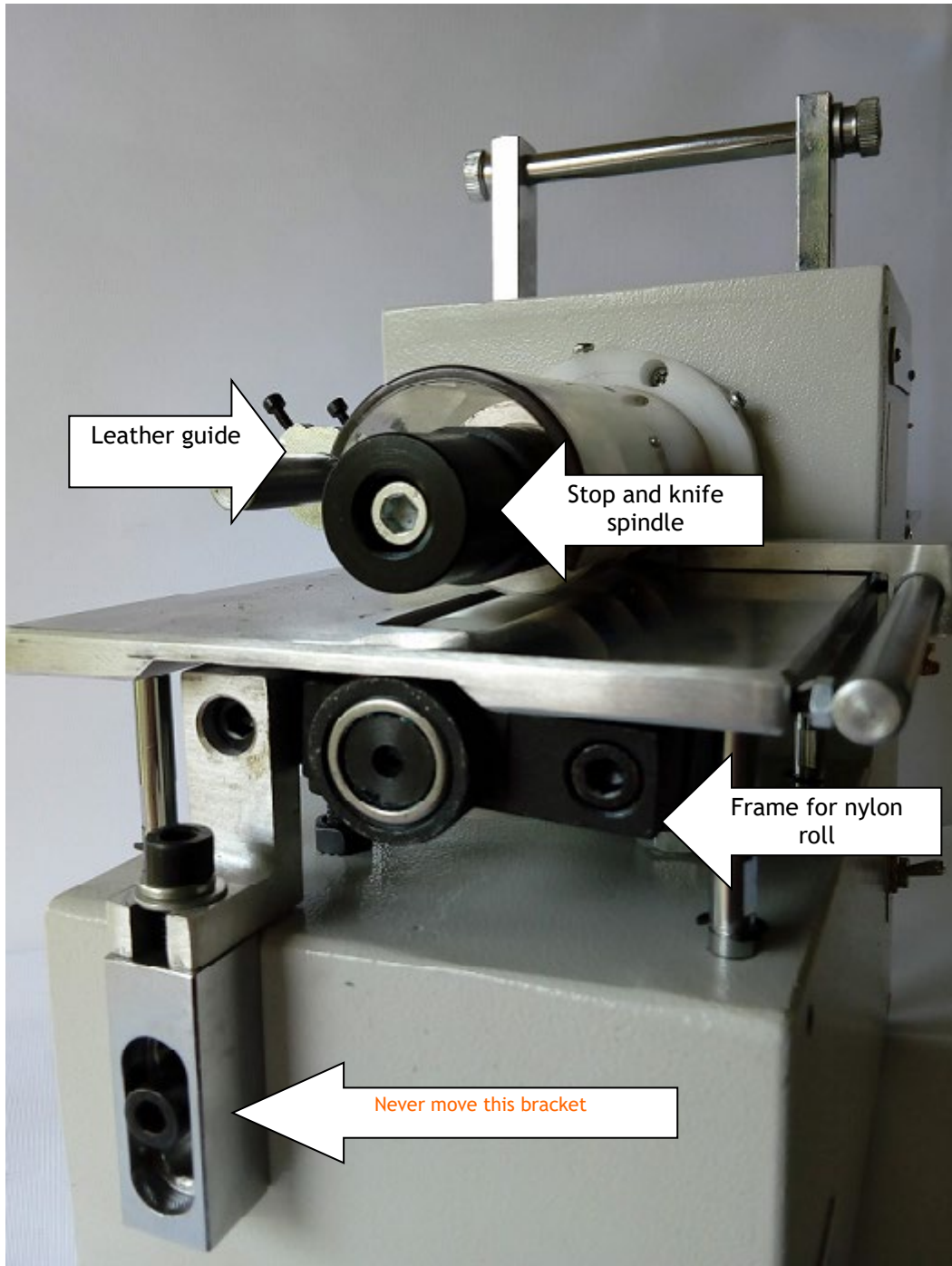
With the flip-switch on the front side of the machine you can make the drive roller turn left or right.



7. Picture front and top view



8. Picture left side



9. Picture right side

