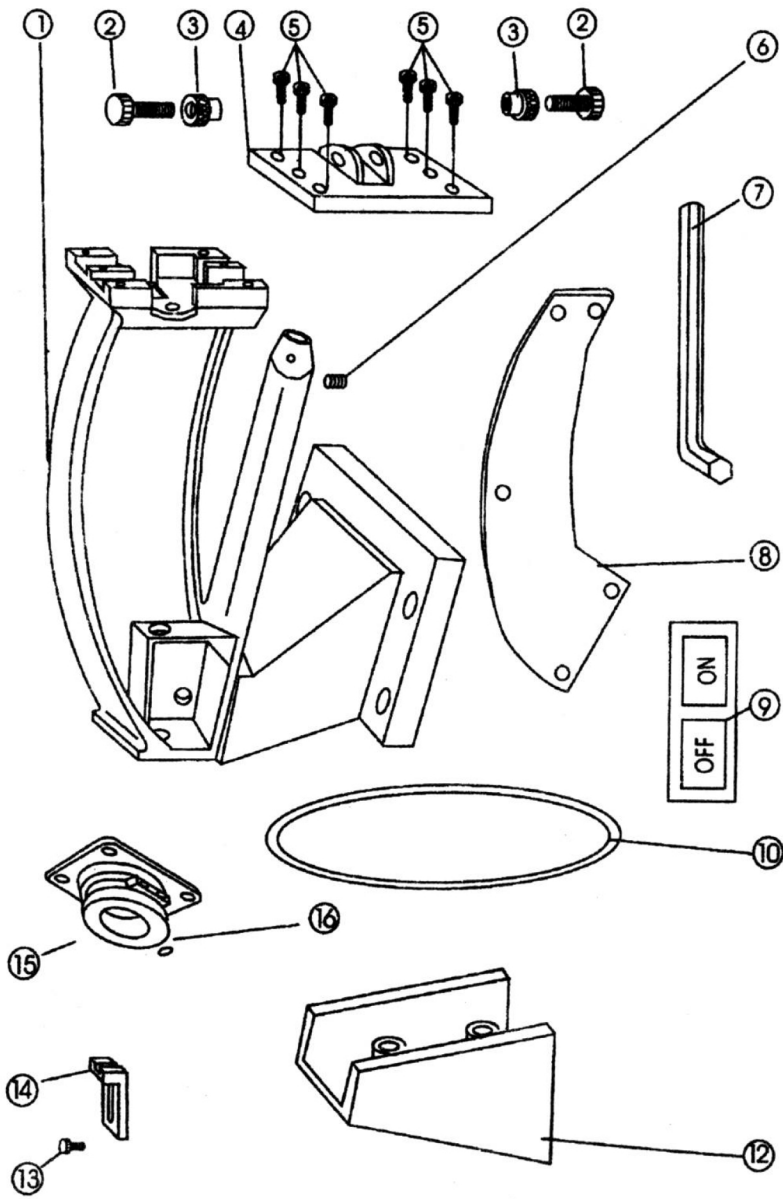


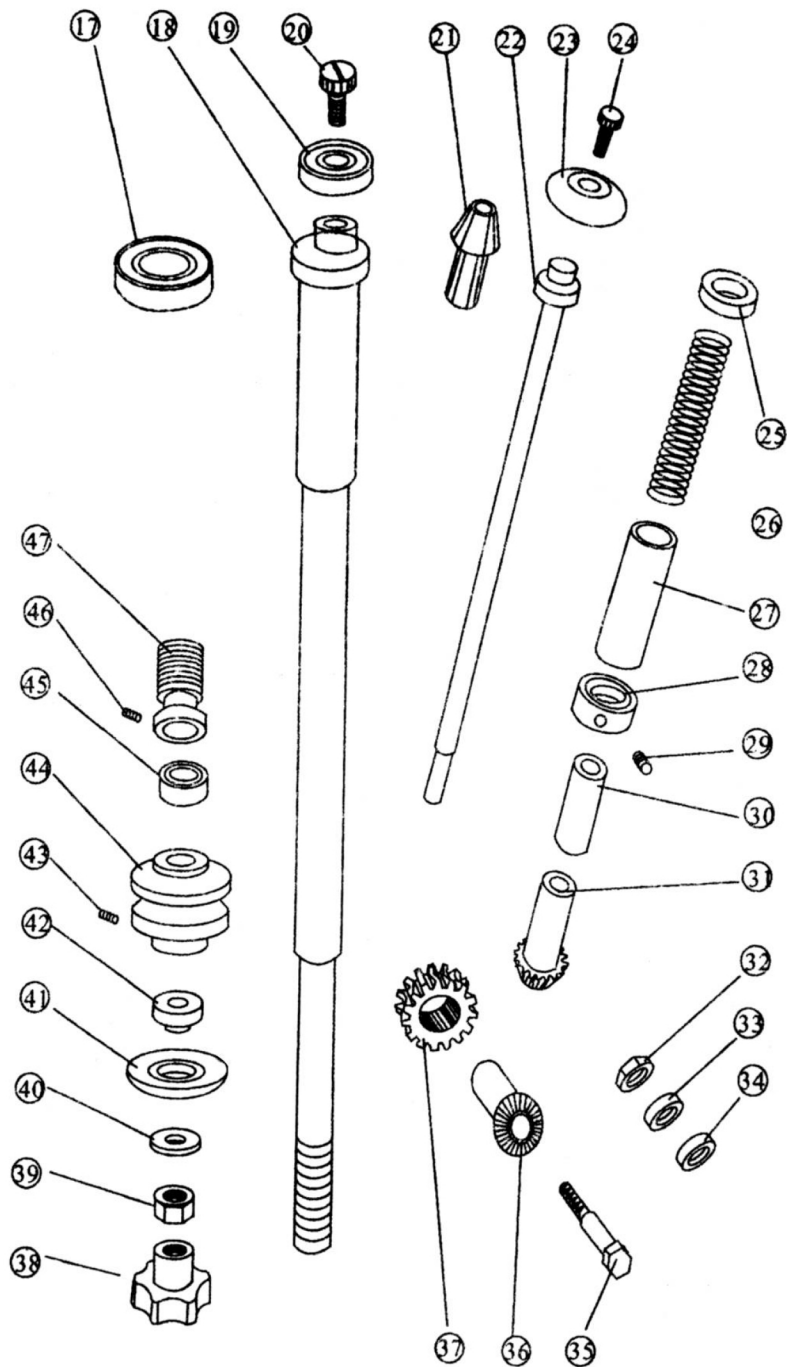
# GLOBAL

SK 109 DD

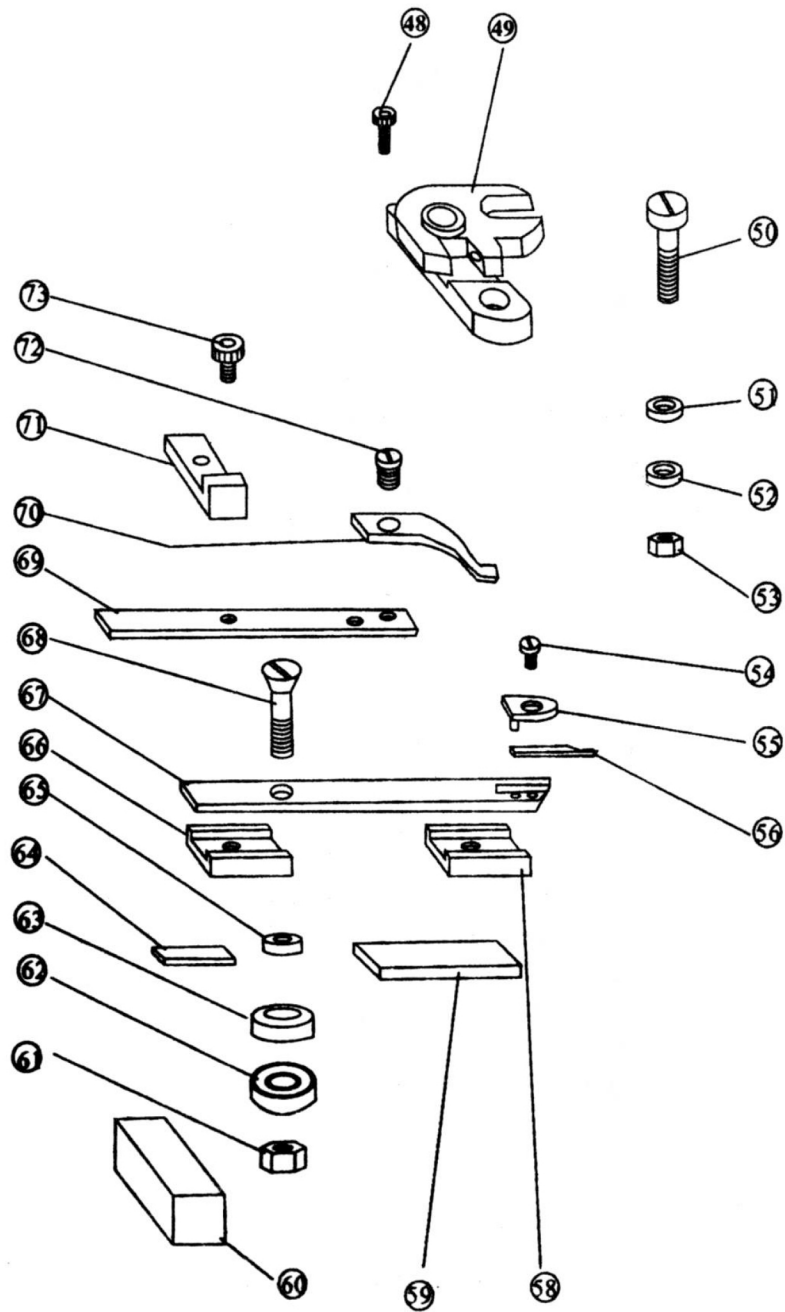




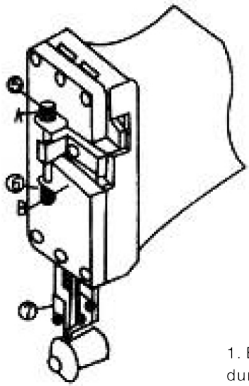
PART NO	NAME PART	QTY
1	MACHINE BODY	1
2	BOLT	1
3	NUT	1
4	FRONT ARM COVER	1
5	SCREW	1
6	SCREW	1
7	SPANNER	1
8	LEFT COVER	1
9	SWITCH	1
10	STRAP	1
12	STRAP COVER	1
13	SCREW	1
14	GRINDING SUPPORT	1
15	GRINDING WHEEL COVE	1
16	BOLT	1



PART NO	NAME PART	/QTY
17	SHAFT	1
18	FASTENING SCREW FORSHAFT	1
19	SHAFT	1
20	SCREW	1
21	COPPER KNOB	1
22	DOWN SHAFT CONTROL	1
23	ROUND KNIFE	1
24	SCREW	1
25	CUSHION	1
26	COMPRESSED SPRING	1
27	ALUMINUM SPRING COVER	1
28	SHAFT COVER	1
29	SCREW	1
30	DOWN SHAFT SLEEVE	1
31	TAPER GEAR WHEEL	1
32	NUT	1
33	CUSHION	1
34	CUSHION	1
35	FLXUP SHAFT	1
36	WIMBLE TOOTH	1
37	WIMBLE TOOTH	1
38	PLASTIC HANDWHEEL	1
39	NUT	1
40	WHEEL CONCAVE CUSHION PATCH	1
41	UP KNIFE GRINDING WHEEL	1
42	SHAFT CONVEXITY CUSHION PATCH	1
43	SCREW	1
44	STRAP WHEEL	1
45	SHAFT	1
46	SCREW	1
47	WORM	1

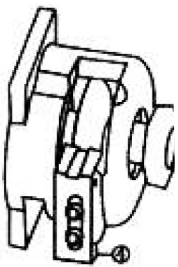
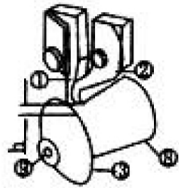


PART NO	NAME PART	QTY
48	SCREW	1
49	ROCKING PLATE SET	1
50	RIGHT ROCKING PLATE SCREW	1
51	CUSHION	1
52	CUSHION	1
53	NUT	1
54	BOLT	1
55	UP COMPRESSED PLATE	1
56	UP KNIFE	1
58	KNIFE REST DOWN SLOT	1
59	WICK	1
60	WICK	1
61	NUT	1
62	SHAFT	1
63	PLAIN GASKET	1
64	WICK	1
65	PLAIN GASKET	1
66	KNIFE REST UP SLOT	1
67	UP KNIFE SUPPORT	1
68	ARM SCREW	1
69	PRESSURE FOOT SUPPET	1
70	PRESSURE FOOT	1
71	FASTENING CONTROL	1
72	SCREW	1
73	SCREW	1



## Inside trimming machine operating instructions

1. Before use, please check whether the transmission mechanism is loose or stuck during transportation
2. Before use, please add oil to each oil hole before starting, and add 3–5 to each oil hole per shift  
(Note: The machine must use more than 30° lubricating oil (oil) or load breaker hydraulic oil)
3. Before use, please adjust the belt tightness to appropriate, not too tight.
4. Tool bar adjustment: When the straight knife is adjusted to the maximum height, the distance between the highest point of the straight knife edge of the loosening straight knife press plate and the highest point of the round knife is 3.5–mm.
5. Guard edge adjustment: guard edge close to the outside of the straight knife 1, the distance between the highest point of the round knife and the lowest point of the guard edge h is slightly greater than the thickness of the cut material is appropriate, adjust the screw ⑤ (A) after the lock nut ⑥ (AB to avoid the work of the guard edge up and down.
6. Round knife and straight knife: loosen the steel head fastening screw, pull open the copper head, and install the straight knife  
And round knife (3), gently hit the round knife fastening screw (9) with a hammer, so that the round knife (3) and the straight knife (1) slowly fit until it can cut off the material currently processed is appropriate, and the unreliable is too tight, otherwise the cutting edge will soon wear or make noise.
7. Replace the round knife: loosen the screw and remove the round knife, replace the new round knife, and check whether the round knife swings or beats up and down
8. Straight edge grinding: Put the straight knife (1) into the knife groove of the sharpening frame (4), gently push the straight knife (1), slowly contact the cutting edge with the grinding wheel, add a little cutting fluid, the grinding edge is not burned, not rolled, and the edge is sharp



Note: If the machine is abnormal, please find professional maintenance personnel to repair.