



**ZZ 1266**

**SERVICE MANUAL**

[www.globalsew.com](http://www.globalsew.com)

[info@globalsew.com](mailto:info@globalsew.com)

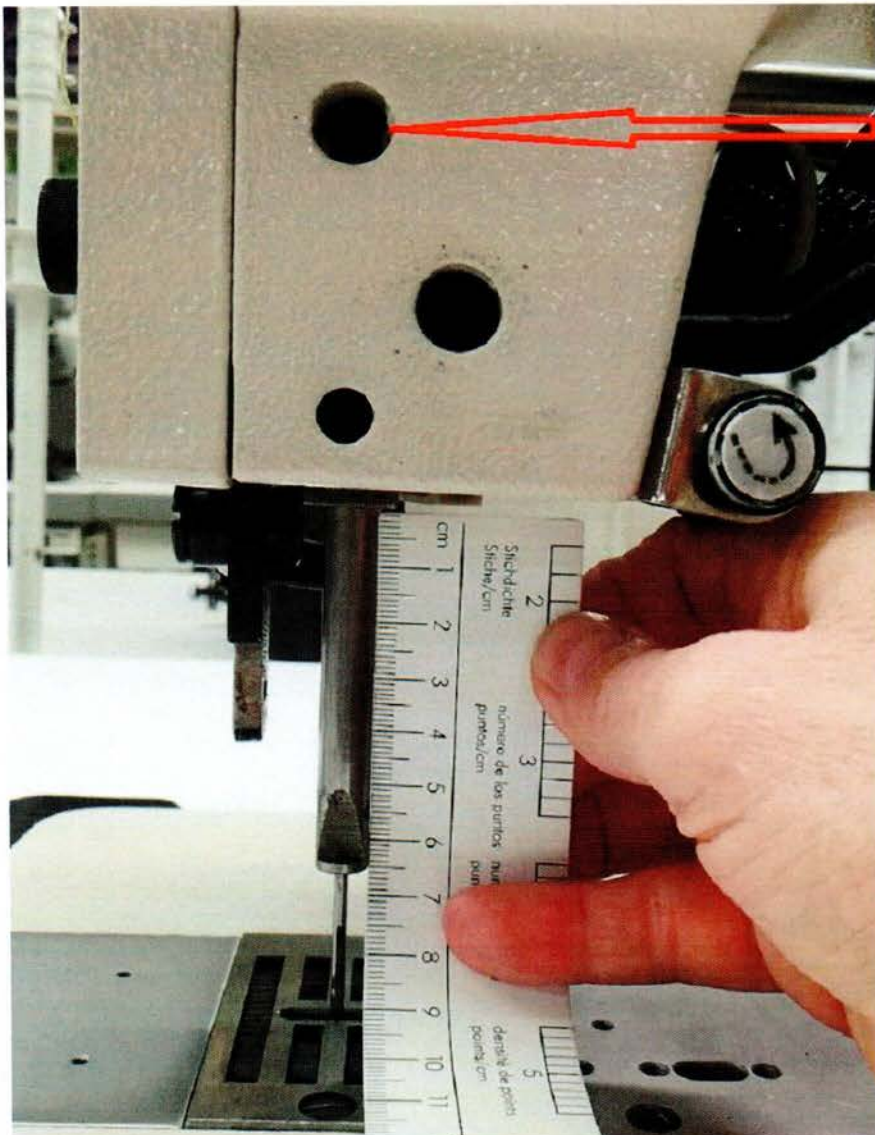
## **Needle Bar Height.**

### **REQUIREMENT.**

*With needle bar at lowest point, (B.D.C.), from needle bar frame to end of needle bar is 66mm.*

### **ADJUSTMENT.**

*Loosen hex screw, and raise/lower needle bar. See photo below.*



*Loosen 3mm hex screw.*

*Needle bar at lowest point. (B.D.C.)  
From needle bar frame to end of needle bar is 66mm.*

### **NOTE.**

*This measurement could change depending on the sewing operation.*

## *Shuttle Timing.*

### *REQUIREMENT.*

*When needle has been raised 5mm from B.D.C. point of shuttle must be at centre line of needle. See photo below.*



### *Set On Straight Stitch.*

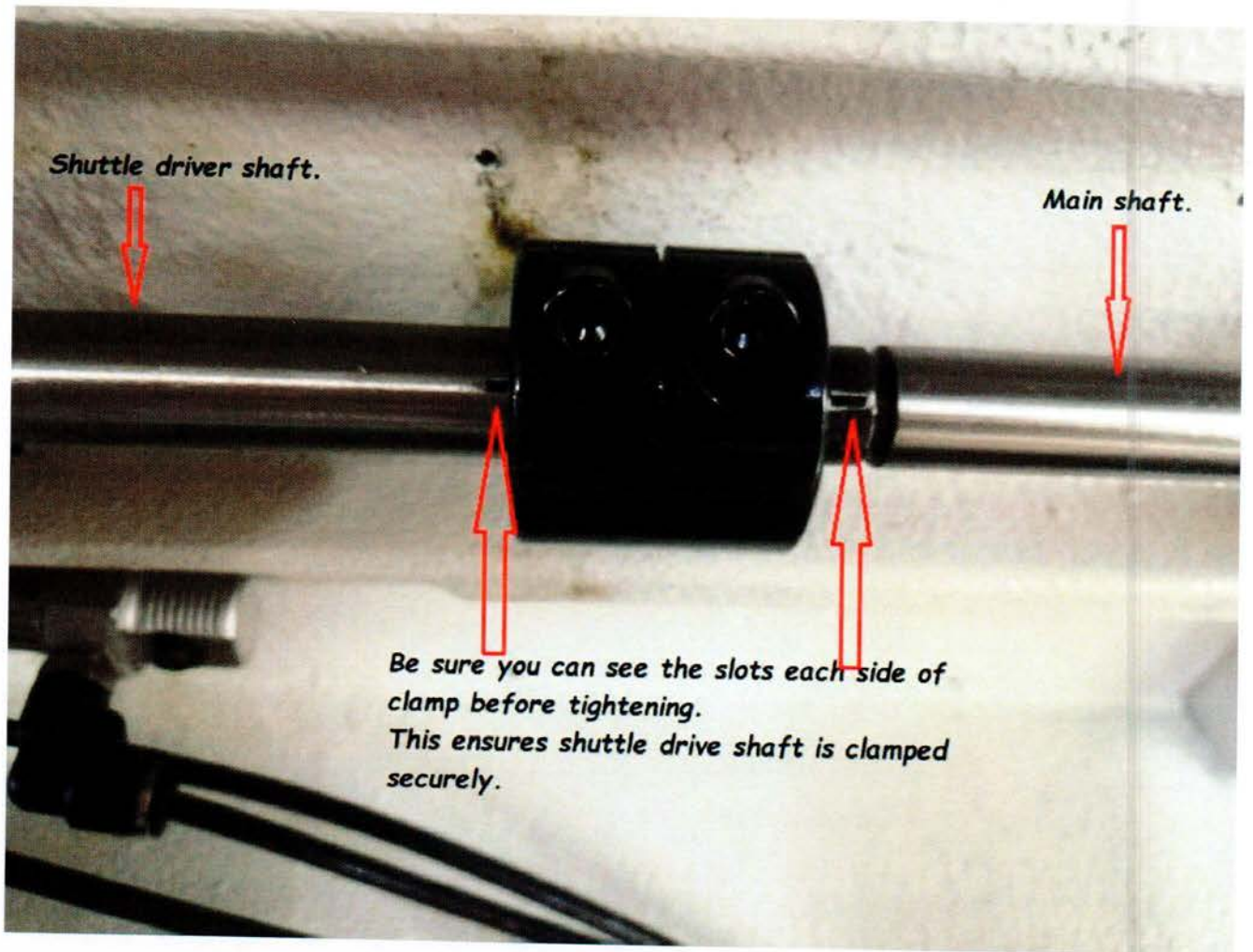
*Turn handwheel until needle is at B.D.C. continue to turn handwheel until needle on the up stroke is raised 5mm. At this time point of shuttle must be in centre line of needle.*

### **NOTE.**

*This setting could change depending on sewing operation.*

## ADJUSTMENT.

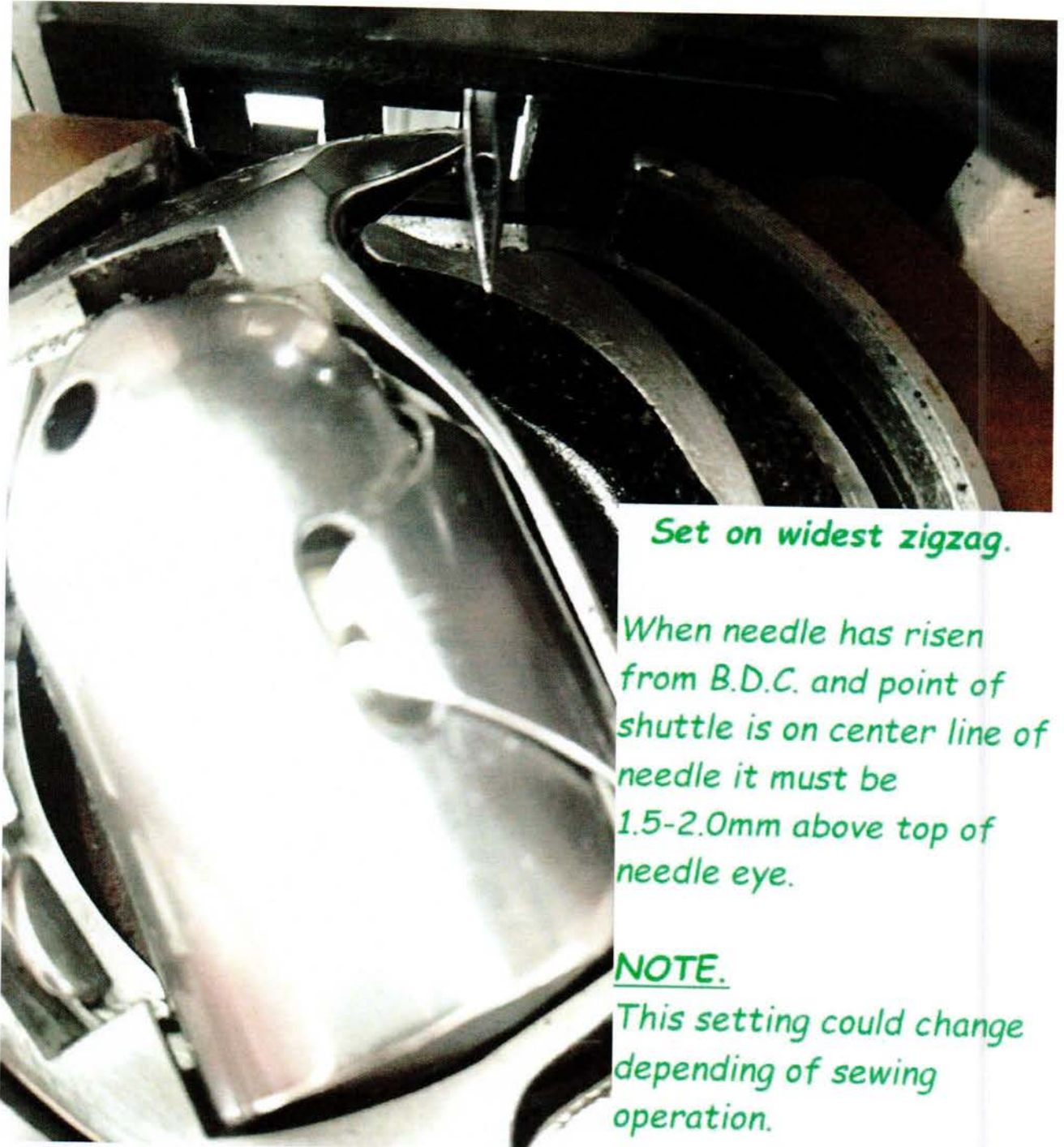
Loosen clamp and adjust shuttle driver shaft. See photo below.



*Check Needle Bar Height on Widest Zigzag.*

**REQUIREMENT.**

*On widest zigzag, needle on right side, the point of shuttle must be 1.5-2.0mm above top of needle eye. See photo below.*



*Set on widest zigzag.*

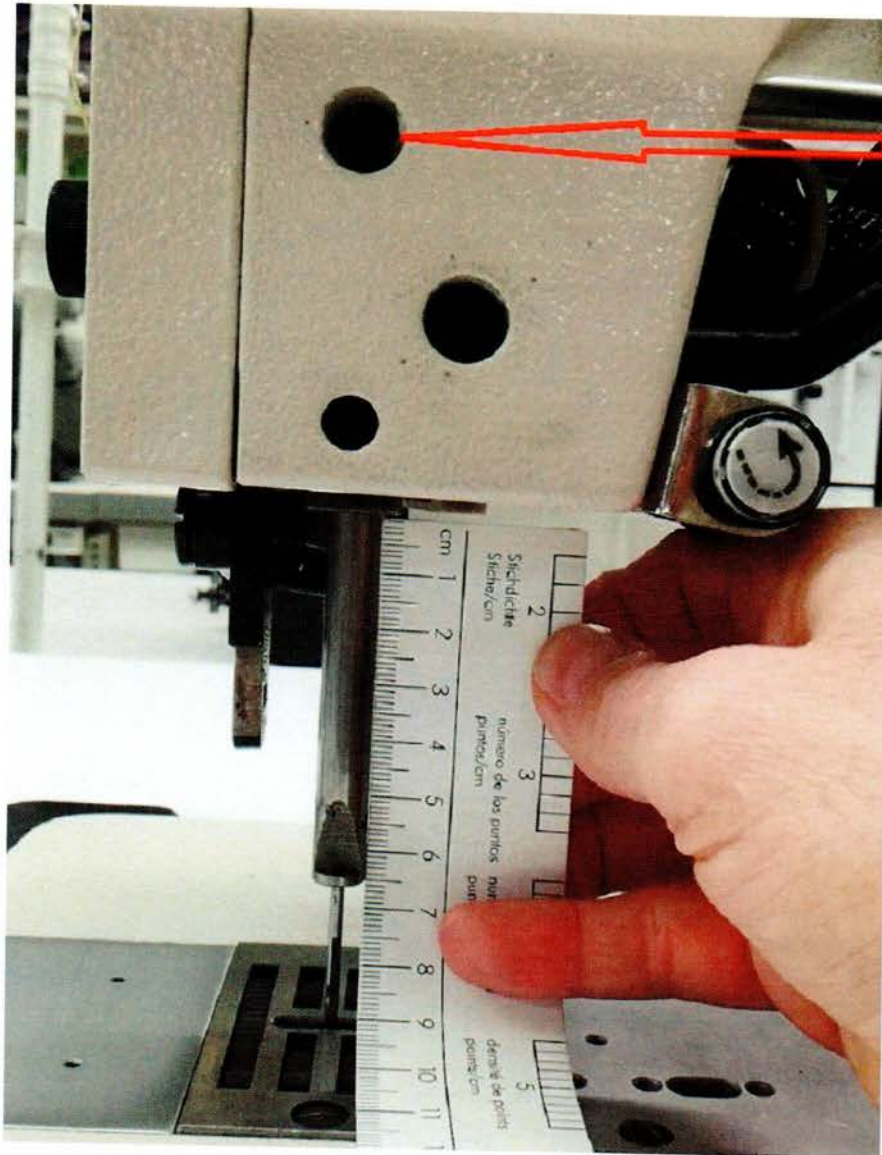
*When needle has risen from B.D.C. and point of shuttle is on center line of needle it must be 1.5-2.0mm above top of needle eye.*

**NOTE.**

*This setting could change depending of sewing operation.*

## ADJUSTMENT.

Loosen hex screw and raise/lower needle bar. See photo below



Loosen 3mm hex screw.

Needle bar at lowest point. (B.D.C.)  
From needle bar frame to end of needle bar is 66mm.

### **NOTE.**

This measurement could change depending on the sewing operation.

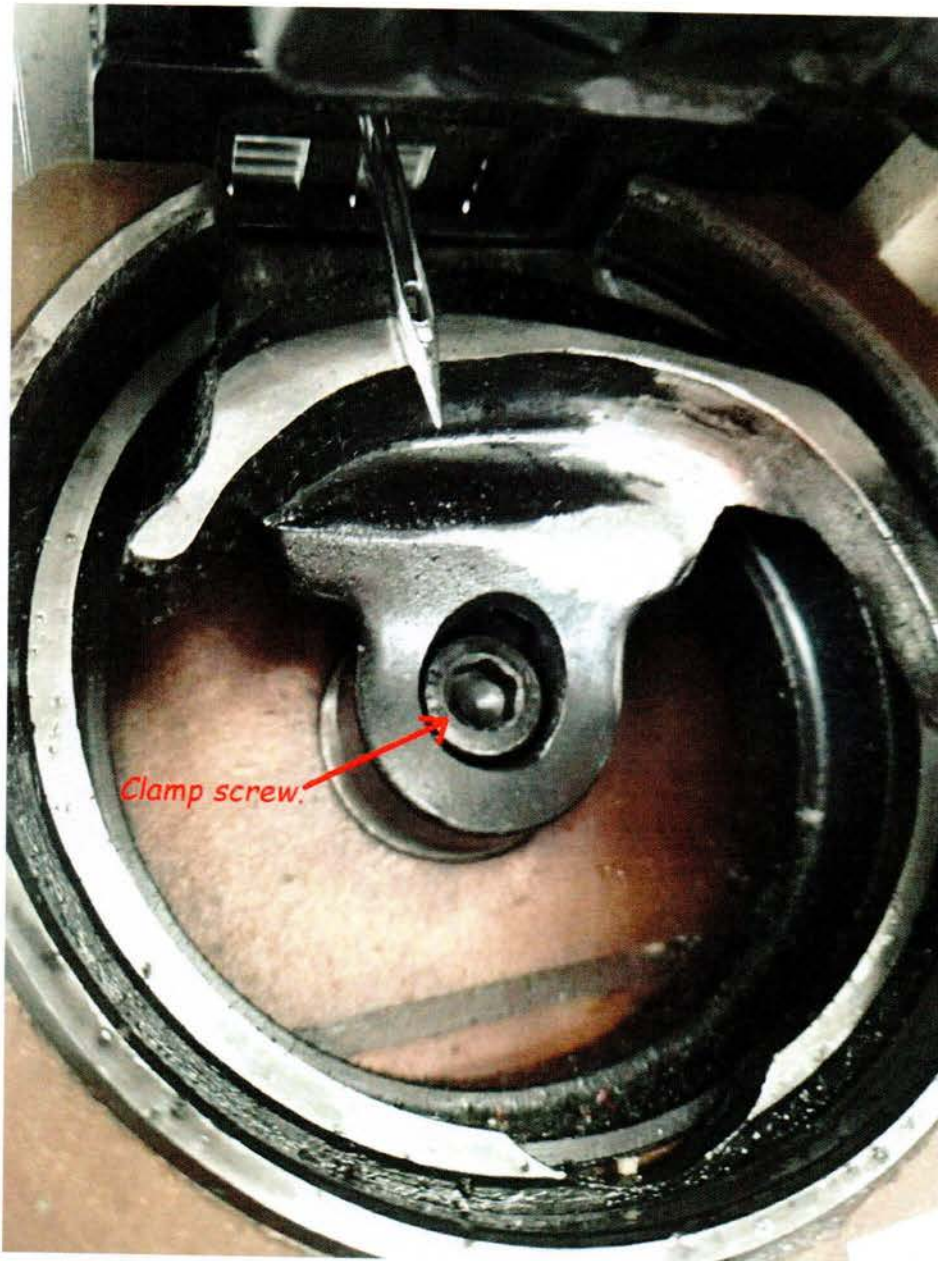
## *Needle Guard.*

### *REQUIREMENT.*

*With needle at B.D.C. face of shuttle driver must touch, but not deflect needle.*

### *ADJUSTMENT.*

*See photo below.*

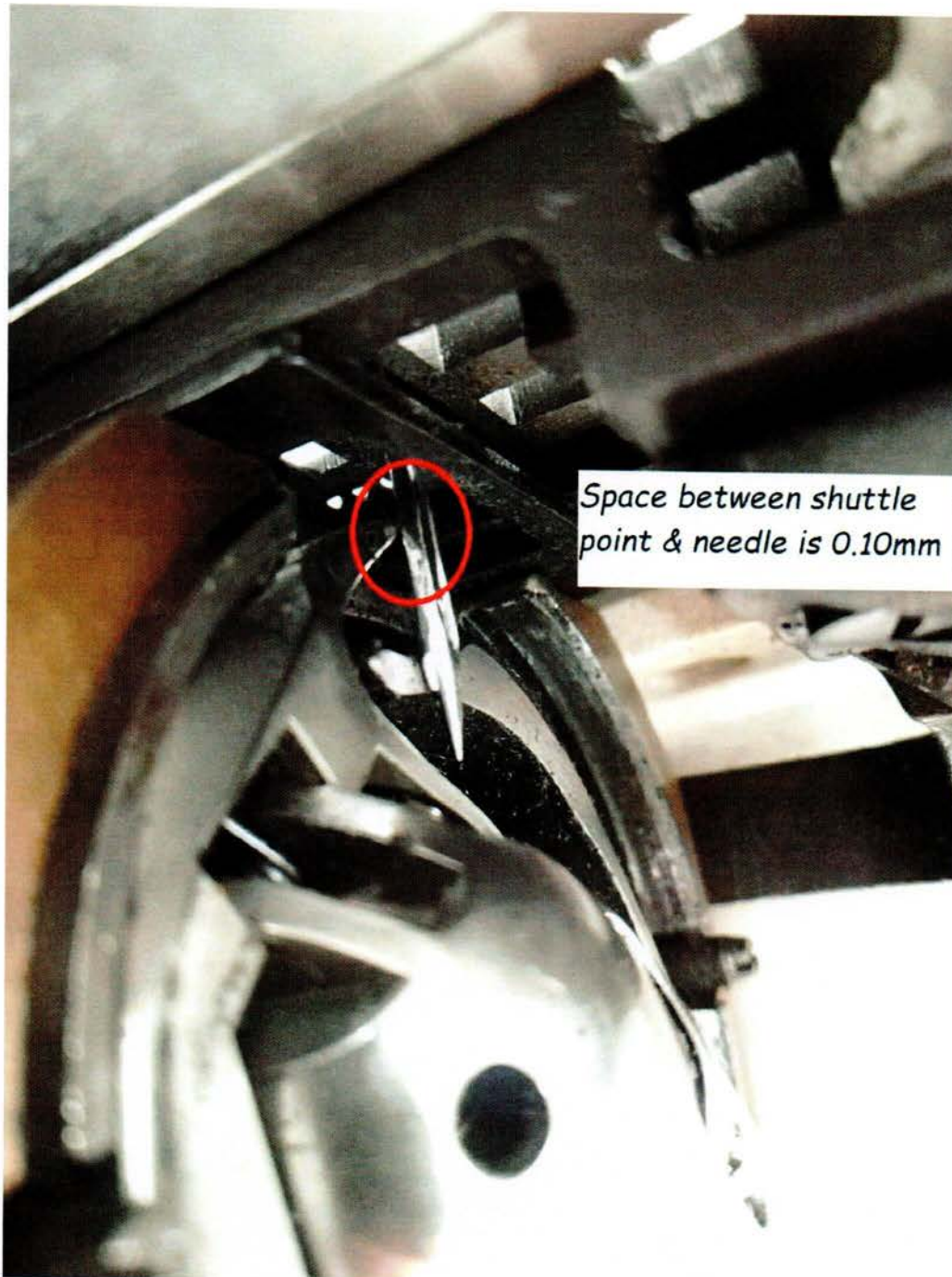


*Remove shuttle driver clamp screw & shuttle driver. Inside where shuttle driver fits are spacing washers. Either add or remove washers to set driver to guard needle as required.*

*Clearance between shuttle point & needle.*

*REQUIREMENT.*

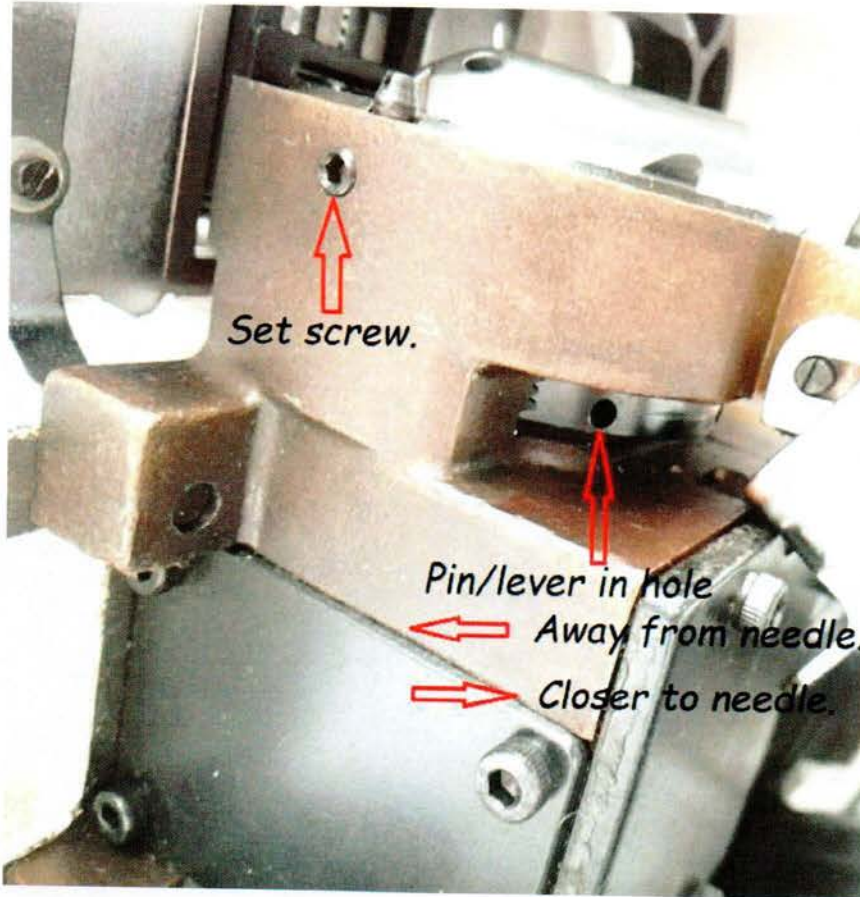
*At shuttle timing space between point of shuttle & needle must be 0.10mm. See photo below*





**ADJUSTMENT.**

See photo below.



Loosen set screw. With a pin/lever adjust race to needle.

Pin/lever in hole  
← Away from needle.  
→ Closer to needle.

### STRAIGHT STITCH ALIGNMENT (1)

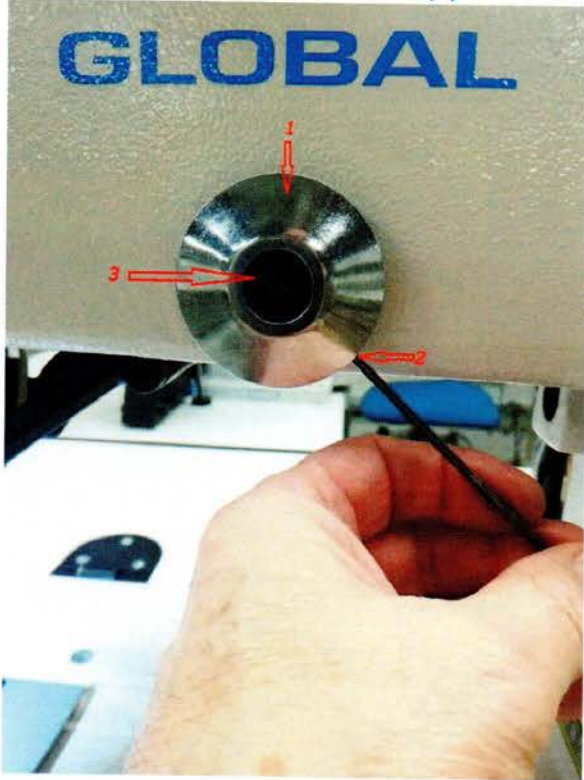


*Straight Stitch Alignment.*

REQUIREMENT

*Place paper over needle plate, turn hand wheel until needle on downward motion just enters the paper. Now turn hand wheel in reverse direction until needle again enters into the paper. Needle should enter the same hole.*

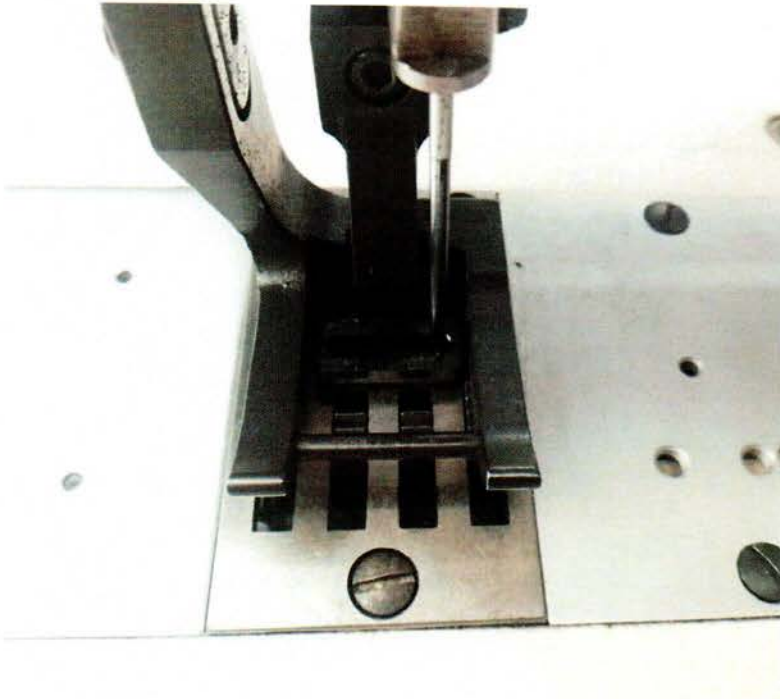
STRAIGHT STITCH ALIGNMENT (2)



ADJUSTMENT:

Turn dial (1) fully CCW.  
Loosen hex screw (2) in dial.  
Adjust screw (3) to achieve requirement.

*LATERAL SETTING OF MAX. ZIG-ZAG (1)*



*Lateral Setting of Maximum Zigzag.*

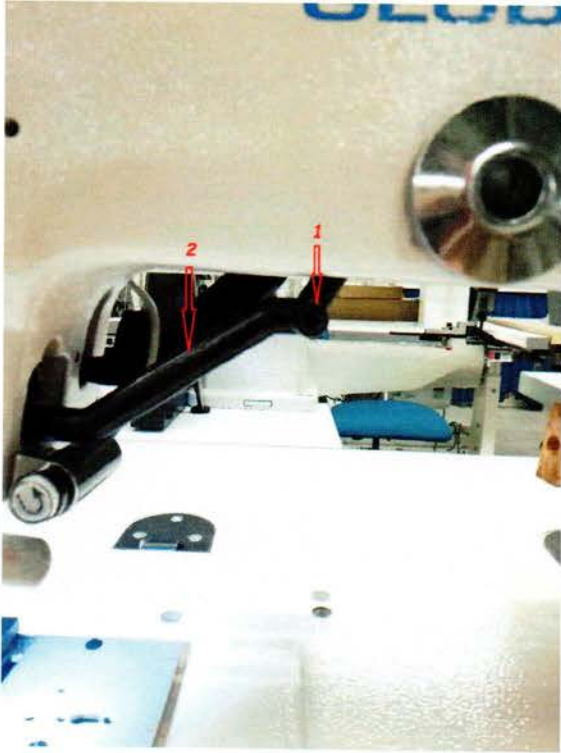
REQUIREMENT.

*Turn zigzag dial fully CW.  
Needle should be equal distance from  
left & right sides of needle hole in  
presser foot.*

NOTE.

*Lateral setting of straight stitch must  
be re-checked.*

LATERAL SETTING OF MAX. ZIG-ZAG (2)



Adjustment.

Loosen screw (1).  
Adjust lever (2) to achieve correct setting.

LATERAL SETTING OF STRAIGHT STITCH (1)



Lateral Setting of Straight Stitch.

Requirement.

Zero zigzag, needle should be centered laterally as possible in needle hole.

LATERAL SETTING OF STRAIGHT STITCH (2)



Adjustment.

Loosen screw (1).  
Adjust eccentric screw (2)