

GLOBAL

EM 119

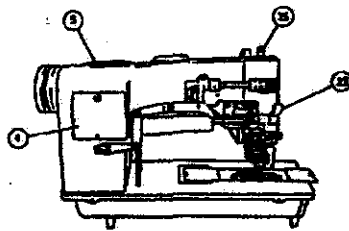
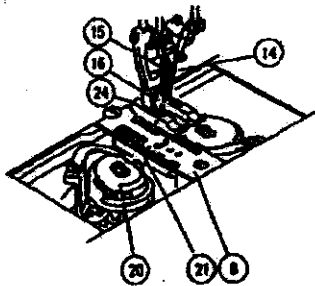
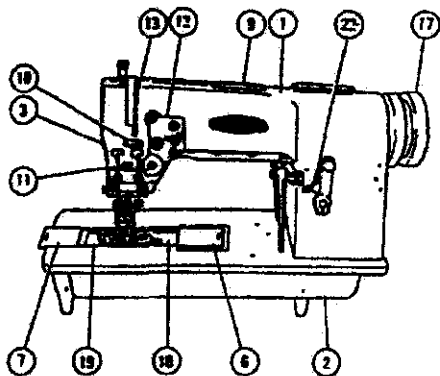
High speed 2-needle picot stitch sewing machine

**INSTRUCTION / OPERATING MANUAL
PARTS MANUAL**

INSTRUCTION MANUAL

1. Names of the main parts
2. Directions for use
 - (1) Setting the stitching needles
 - (2) Winding the under thread
 - (3) Threading the bobbin case
 - (4) Placing the bobbin case in the rotary hook
 - (5) Upper threading of the machine
 - (6) Drawing up the under thread
 - (7) Under thread tension
 - (8) Upper thread tension
 - (9) Adjusting the presser foot pressure
 - (10) Adjusting the stitch length
 - (11) Setting the main needle (Auxiliary piercer)
 - (12) Setting the guide needle (Piercer)
 - (13) Sewing a corner and a small circle
 - (14) Sewing a right-angle corner
3. Lubrication
4. Troubles and steps to take
5. Machine head specification

1. Names of the main parts



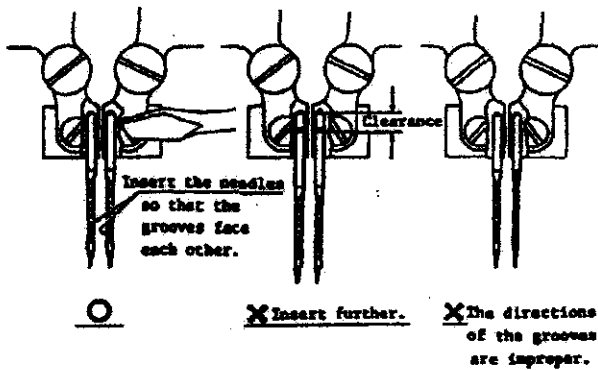
- (1) Arm
- (2) Bed
- (3) Face plate
- (4) Side cover
- (5) Oil tank cover
- (6) Bed slide (Right)
- (7) Bed slide (Left)
- (8) Throat plate
- (9) Thread guide, A
- (10) Thread guide, B
- (11) Thread guide, C
- (12) Thread tension regulator (Assembly)
- (13) Take-up lever
- (14) Guide needle (Piercer)
- (15) Stitching needles
- (16) Main needle (Auxiliary piercer)
- (17) Hand wheel
- (18) Rotary hook base (Right)
- (19) Rotary hook base (Left)
- (20) Rotary hook
- (21) Feeder
- (22) Presser foot actuating lever
- (23) Presser foot lifting arm
- (24) Presser foot (Assembly)
- (25) Pressure regulating screw

2. Directions for use

(1) Setting the stitching needles

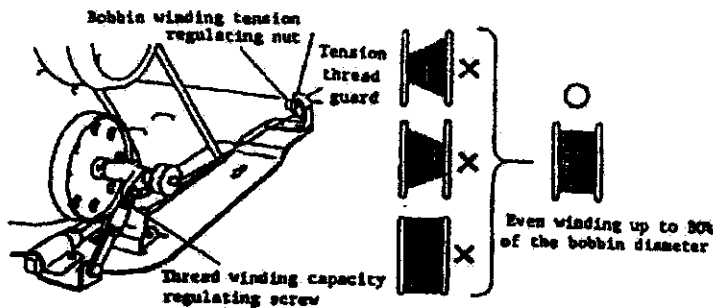
(Caution) Be sure to turn off the power switch before trying the following procedure.

Turn the hand wheel toward you till the needle bar reaches its top dead point. Insert the two needles into the stitch needle clamp as far as they go, holding them so that their grooves face each other. Then fasten the screw. During the operation of the machine, there can exist a slight clearance between the properly fitted needle and the main needle groove, and the needle point is housed in the main needle groove completely.



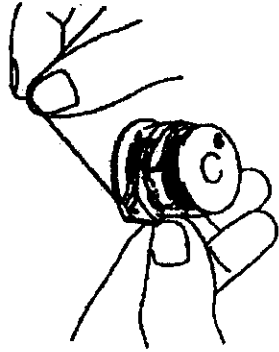
(2) Winding the under thread

- Adjustment) * Winding tension: Wind nylon and polyester thread very loosely.
* Uneven bobbin winding: Move the tension thread guard in the direction that the quantity of thread wound is smaller.
* Thread quantity to be wound: Loosen the regulating screw when a large quantity of thread is to be wound. And for a small quantity of thread, tighten the screw.

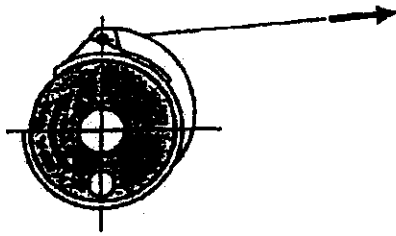


(3) Threading the bobbin case

Thread the bobbin case as shown below.

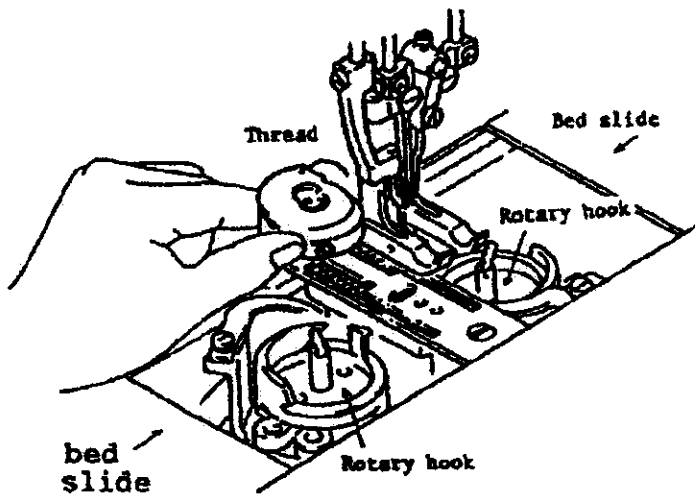


Attention) When viewed from the back, the bobbin should turn clockwise in the bobbin case if the under thread is pulled out.



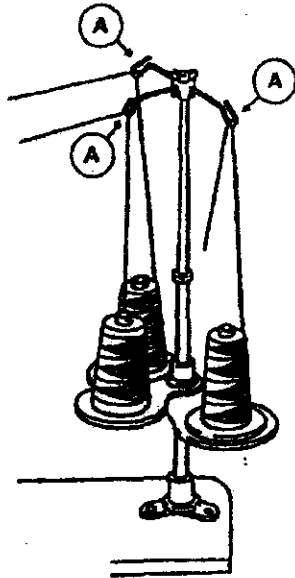
(4) Placing the bobbin case in the rotary hook

Draw about 5 cm of the thread out of the bobbin case. Hold the case as shown below and place it in the rotary hook.

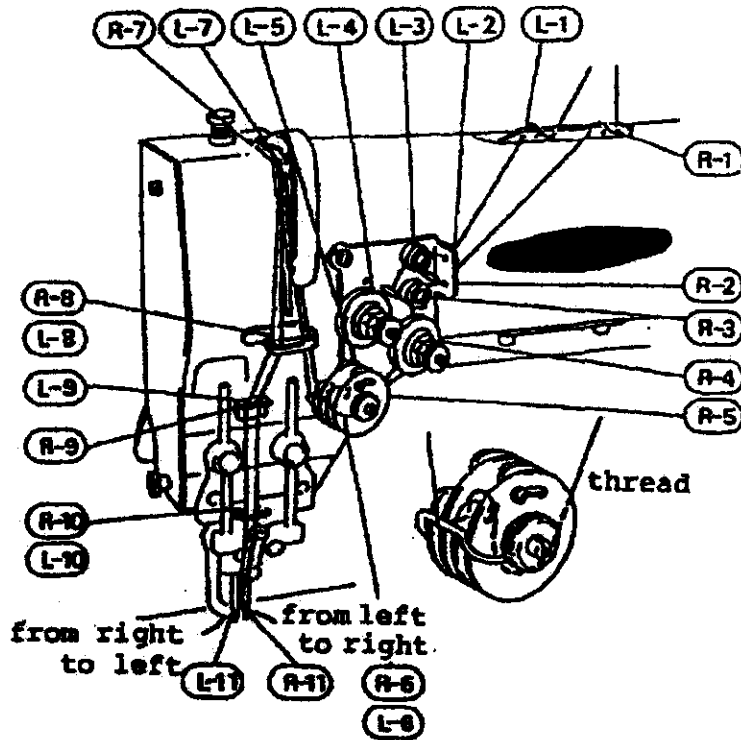


5) Upper threading of the machine

Attention) Each thread guide A of the spool holder should be placed right above each spool.



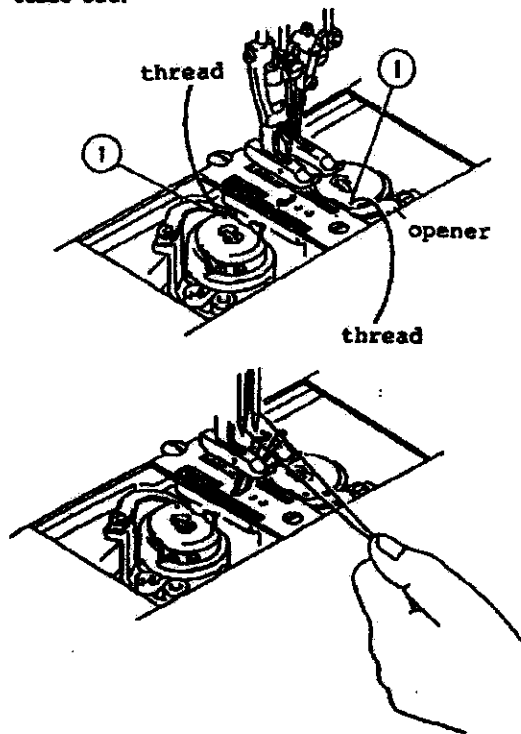
Position the take-up lever at the highest point and pass the thread in the order shown below.



when enlarged

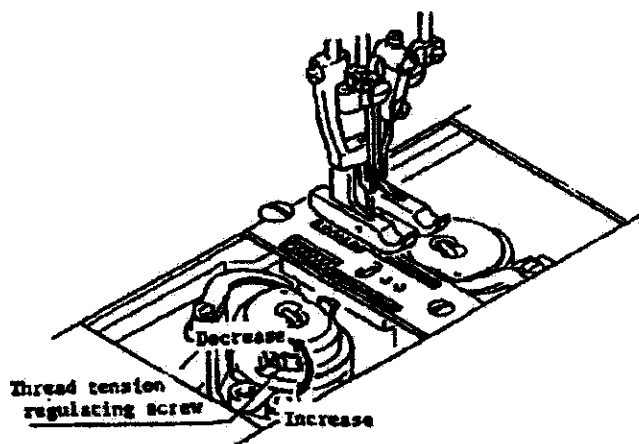
(6) Drawing up the under thread

Draw out the thread from the hole 1 of the bobbin case and stretch it on the bed. Hold the two upper threads between the thumb and forefinger of the left hand. And with the right hand, rotate the hand wheel once and draw the upper threads up as shown in the figure. And then, the under thread comes out.



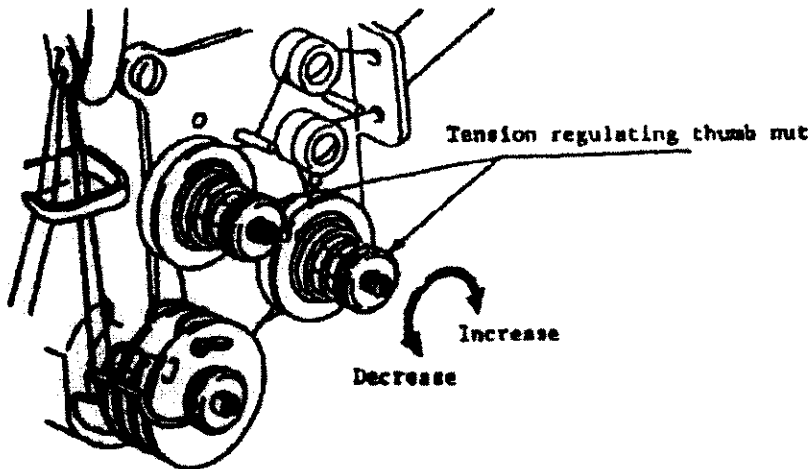
(7) Under thread tension

Tension of the under thread increases when the thread tension regulating screw is turned to the right while it decreases when the screw is turned to the left.



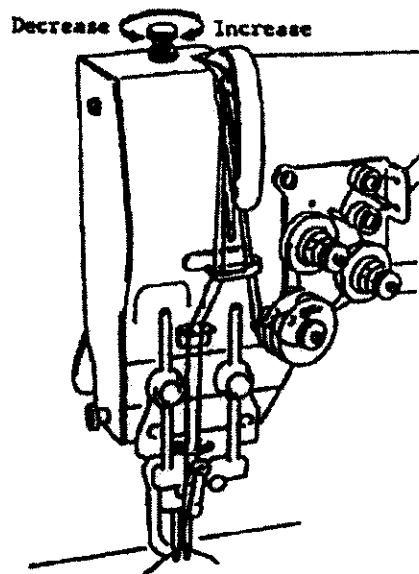
8) Upper thread tension

- Adjust upper thread tension so that it harmonizes with under thread tension.
- To increase upper thread tension, turn the tension regulating thumb nut clockwise. To decrease it, turn the nut anticlockwise.



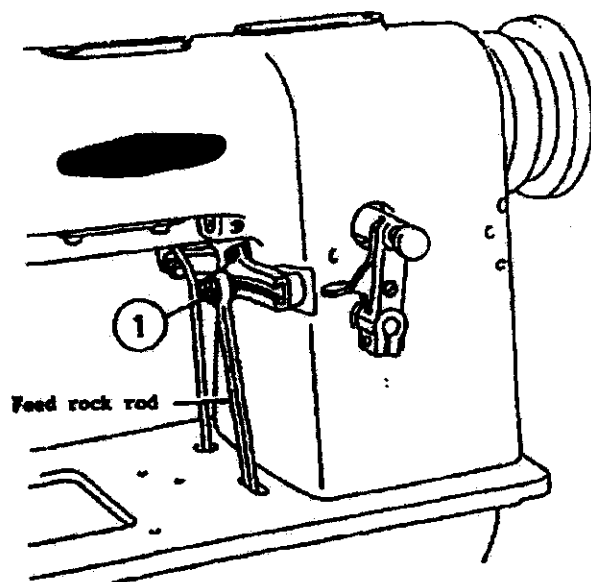
(9) Adjusting the presser foot pressure

Adjust presser foot pressure in accordance with the thickness of material. Turn the pressure regulating screw clockwise so that the pressure increases. To reduce the pressure, turn the screw anticlockwise.



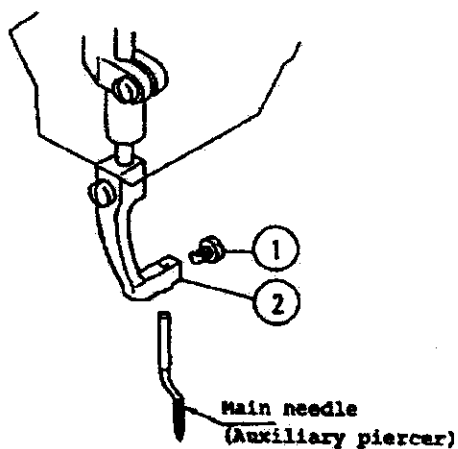
(10) Adjusting the stitch length

Stitch length can be adjusted by loosening and sliding the hexagonal nut (1) located at the end of the feed rock rod. To increase the stitch length, slide the rod away from you, while to shorten the stitch length, slide it toward you. When the desirable length is obtained, tighten the hexagonal nut (1).



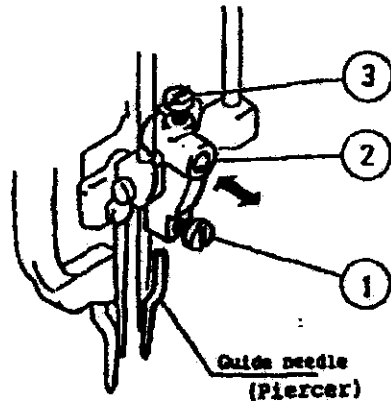
(11) Setting the main needle

For replacing the main needle, loosen the main needle setscrew, remove the main needle from the main needle clamp and set a new one. Care should be taken to see that the stitching needle may be housed properly in the groove of the new main needle when it comes down. The position of the new main needle should be adjusted so that about 1.6 mm of its curved part appears above the throat plate.



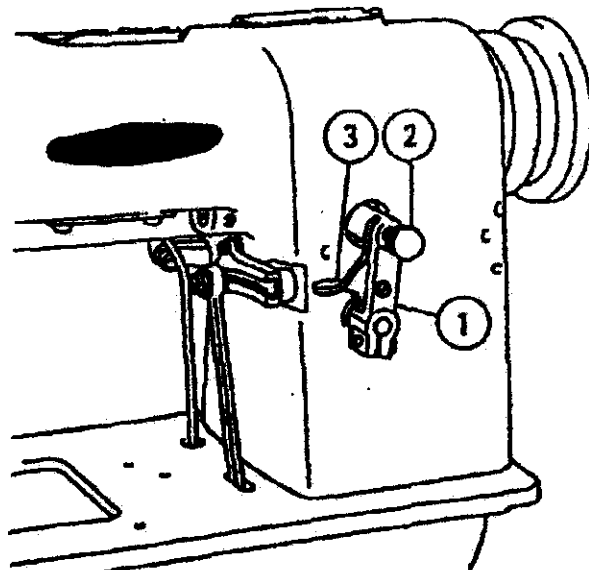
(12) Setting the guide needle (Piercer)

For replacing the guide needle, loosen the guide needle setscrew (1), remove the guide needle from the guide needle clamp and set a new one instead. To adjust the guide needle in accordance with the stitch length, loosen the setscrew (3) of the guide needle clamp (2), slide the holder front and rear to determine the proper traveling distance of the needle and securely tighten the setscrew (2).



(13) Sewing a corner and a small circle

When the roulette nut on the presser foot actuating lever bracket is pressed inside, the presser foot is automatically raised at every third stitch so that the material can be easily turned. When a straight line is to be sewn again, press down the lever (3), and the presser foot lifting mechanism will be disengaged.



(14) Sewing a right-angle corner

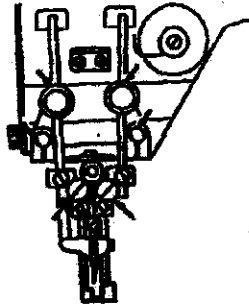
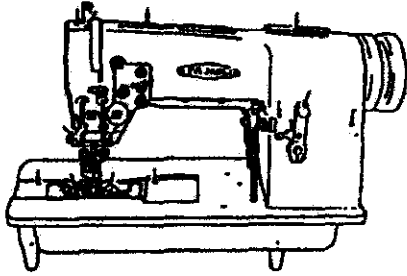
When the main needle pierces the material to make the last hole of the straight stitch, raise the presser foot and turn the material before the stitching needles enter it. Then bring down the presser foot again, and proceed with the stitch.

3. Lubrication

Apply oil to the points indicated by the arrows in the drawings below. The lubrication should be done at least twice a day in order to keep the machine in the best condition.

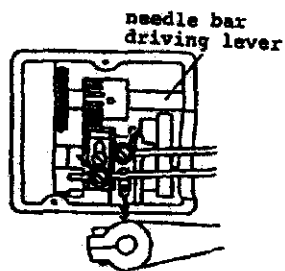
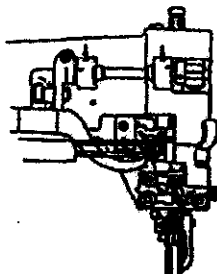
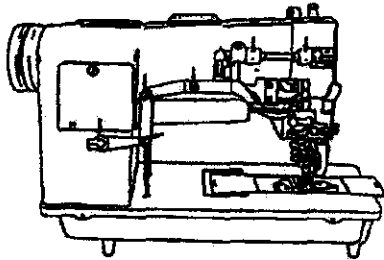
(1) Points to be applied oil at the machine front

For the rotary hook, remove the bed slide and apply oil to its upper surface.



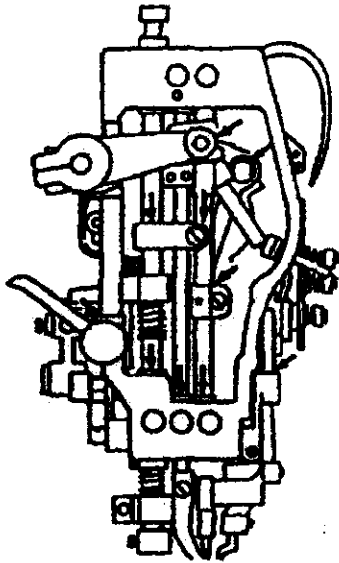
(2) Points to be applied oil at the machine back

Remove the side cover when applying oil to the needle bar driving lever part.

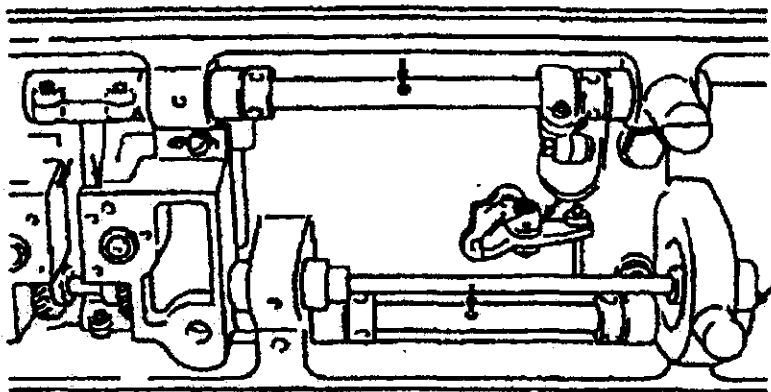


(3) Points to be applied oil at the left end of the machine

Remove the face plate, apply oil to all the movable parts inside and set the face plate back.



(4) Points to be applied oil at the machine bottom



Material puckering becomes worse:

- (1) When the thread or the needles are too thick for the material.
- (2) Upper or under thread tension is too strong.

5. MACHINE HEAD SPECIFICATION

Product name High speed 2-needle picot sewing machine

Machine model 119-2

Max. sewing speed (DEPENDS ON OPERATION AND MATERIAL) 2500 S.P.M.

Lubrication MANUAL OILING

Picot-stitch length 3 – 5 mm

Needle bar stroke Picot-stitch needle - 33,4 mm

Front guiding needle - 33,4 mm

Rear base needle - 16,5 mm

Presser foot lift 5 mm

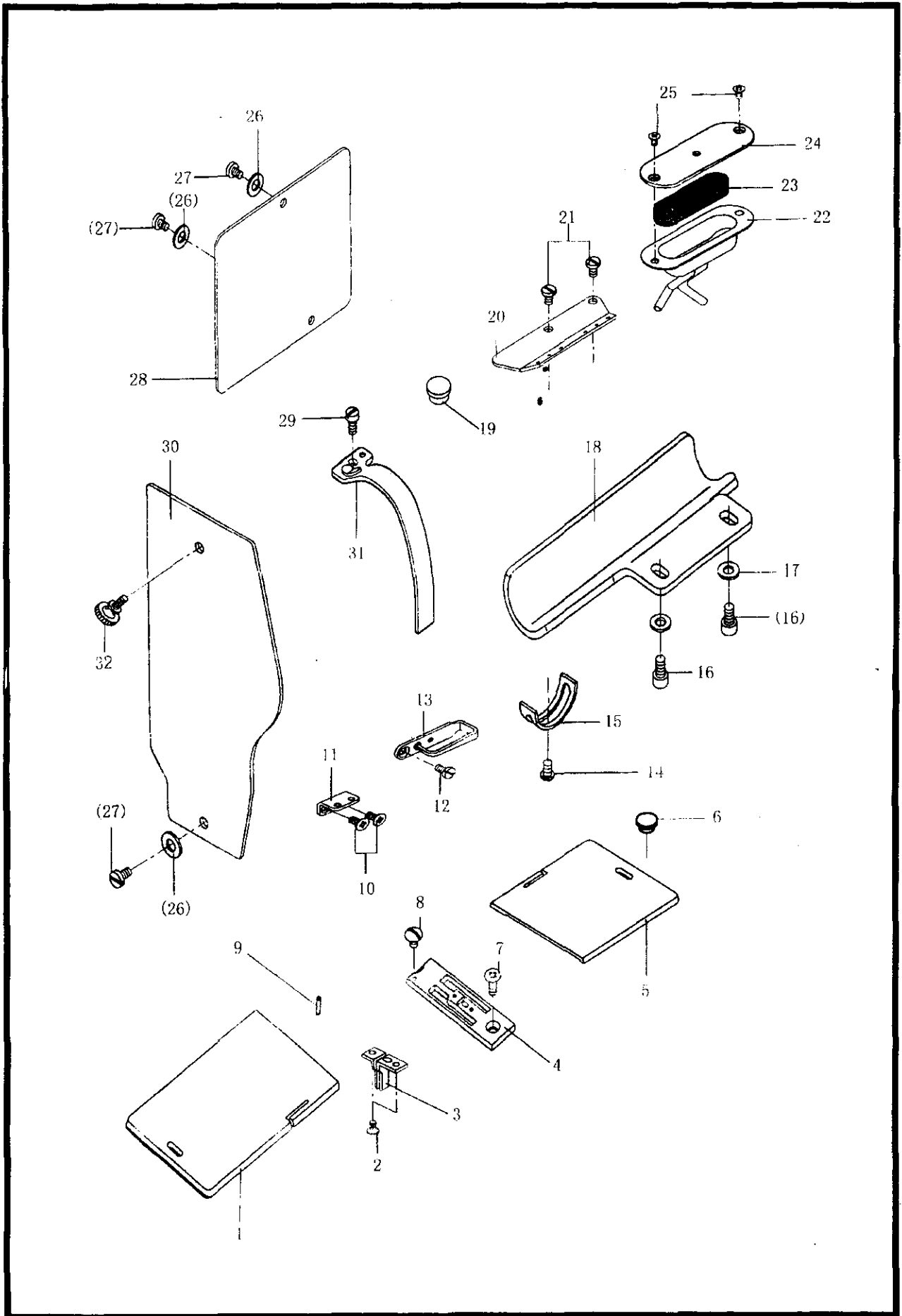
Needles Picot-stitch needle HA X 1

Front guiding needle PKG X 8

Rear base needle PKZ X 1

PARTS LIST

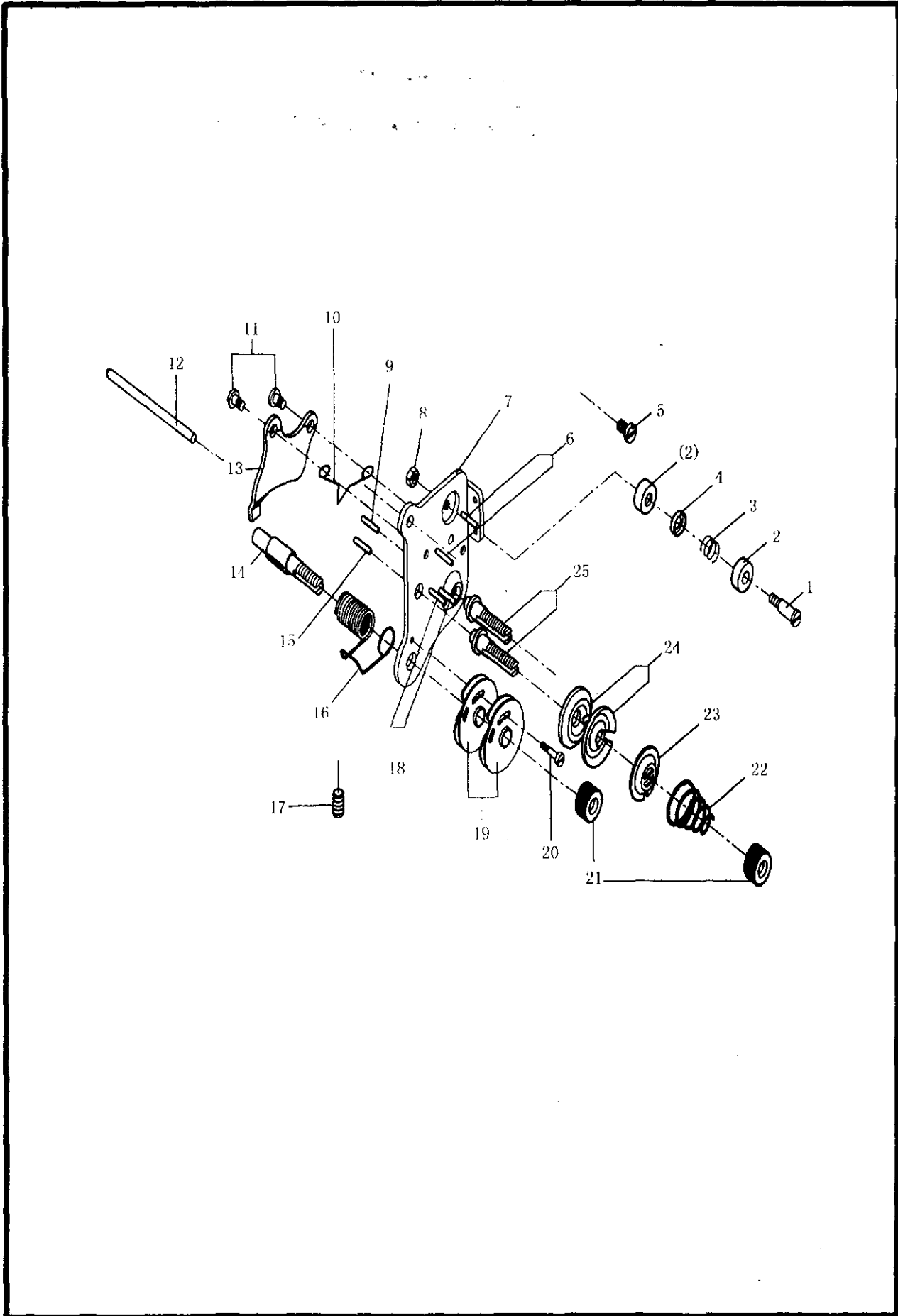
A: ARM BED AND IT'S ACCESSORIES



A : ARM BED AND IT'S ACCESSORIES

1	1720A01	Slide plate left	1	
2	1720A02	Screw	2	
3	1720A03	Protecting needle slide	1	SM3/32" X 56-3
4	1720A04	Needle plate	1	
5	1720A05	Slide plate right	1	
6	8500-1-5	Oil cap	1	
7	8500-1-36	Screw	1	SM11/64" X 40-8
8	1720A06	Screw	1	SW9/64" X 40-4
9		Pin	1	B2X10 GB119-86
10	842-07-26	Screw	2	SM9/64" X 40-4.5
11	1720A07	Thread guide	1	
12	842-07-26	Screw	1	SM9/64" X 40-6
13	1720A08	Thread guide	1	
14	8570-8-25	Screw	1	SM9/64" X 40-4
15	1720A09	Stopper	1	
16		Screw	2	M5X10 GB70-85
17		Washer	2	5 GB97.2-85
18	1720A10	Protecting cover	1	
19	8500-1-39	Oil cap	1	
20	1720A11	Top cover thread guide	1	
21	8500-5-53	Screw	2	SM11/64" X 40-7
22	1720A12	Oil tank	1	
23	1720A13	Felt	1	
24	1720A14	Cover plate	1	
25	842-07-26	Screw	2	SM9/64" X 40-5 5
26		Washer	3	4 GB95-85
27	8500-4-32	Screw	3	SM9/64" X 40-6.5
28	1720A15	Protecting cover	1	
29	8500-3-33	Screw	1	SM11/64" X 40-8
30	1720A16	Face plate	1	
31	1720A17	Thread take up cover	1	
32	1800-A04	Screw	1	SM9/64" X 40-8

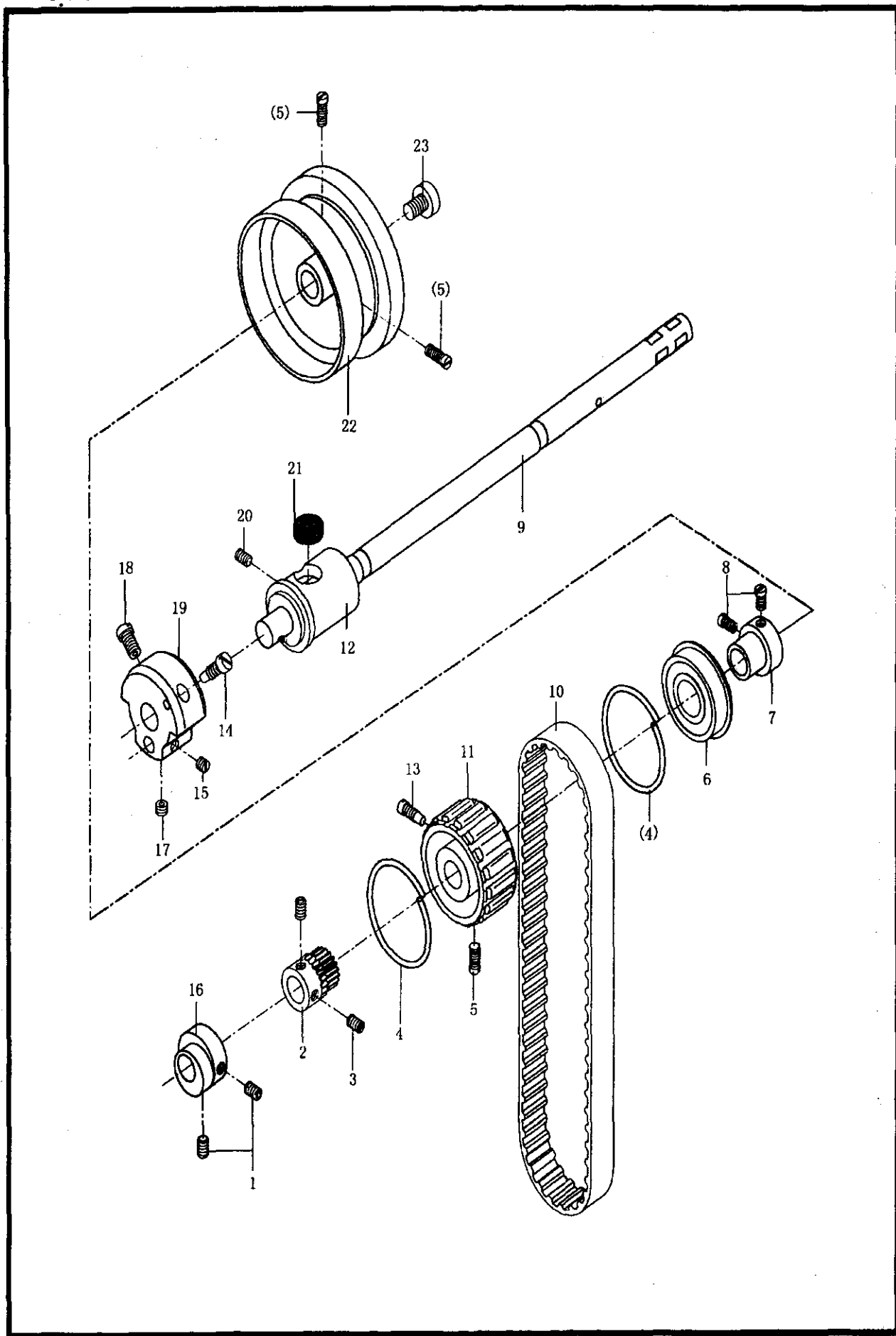
B UPPER THREAD TENSION REGULATOR MECHANISM



B : UPPER THREAD TENSION REGULATOR MECHANISM

1	1720B01	Screw	2	SM9/64" X 40-7
2	1720B02	Thread guide bracket	4	
3	1720B03	Spring	2	
4	1720B04	Thread guide disc	2	
5	8500-5-53	Screw	1	
				SM11/64" X 40-7
6	1720B05	Pin	2	SM9/64" X 40-3
7	1720B06	Upper thread tension plate	1	
8	8570-8-5	Nut	2	
9	1720B07	Pin	1	
10	1720B08	Tension regulating spring	1	
11	842-10-1.9	Screw	2	SM9/64" X 40-2.5
12	1720B09	Tension release pin	1	
13	1720B10	Tension release plate	1	
14	1720B11	Thread tension stud	1	
15	1720B12	Tension release pin	1	
16	1720B13	Thread take-up spring	1	SM15/64" X 28-8
17	842-04-21	Screw	1	
18	1720B14	Pin	2	
19	842-10-1.4	Tension regulating bracket	2	
20	1720B15	Screw	1	
				SM3/32" X 56-12
21	1800-A26-10	Nut	3	SM1/4" X 40-4.5
22	1720B16	Tension spring	2	
23	1720B17	Presser disc	2	
24	1720B18	Tension disc	4	
25	1720B19	Thread tension stud	2	

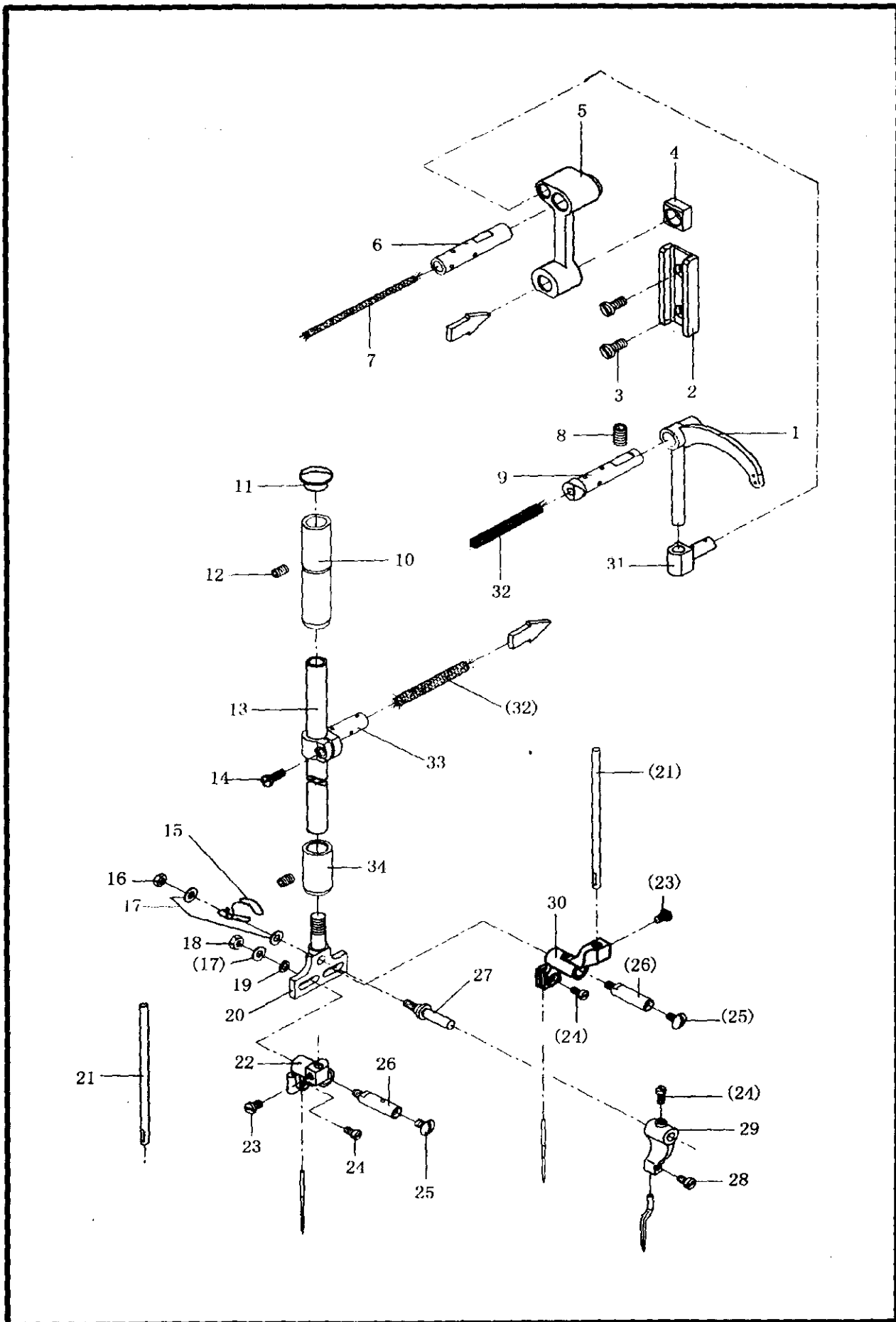
G : UPPER SHAFT MECHANISM



C : UPPER SHAFT MECHANISM

1	1720C01	Screw	2	SM1/4" X 40-6
2	1720C02	Gear	1	
3	1800B06	Screw	2	SM1/4" X 40-4.5
4	1720C03	Spring flange	2	
5	1720C04	Screw	3	SM15/64" X 28-12
6	842-05-18	Bearing	1	Ø20 X Ø47 X 14
7	1720C05	Upper shaft bushing	1	
8	8520-2-36	Screw	2	SM15/64" X 28-8.5
9	1720C06	Upper shaft	1	
10			1	250SL075
11	1720C07	Belt wheel	1	
12	1720C08	Upper shaft bushing	1	
13	1720C09	Screw	1	SM15/64" X 28-9
14	1720C10	Screw	1	SM9/32" X 28-16
15	8500-3-15	Screw	1	SM1/4" X 40-7
16	1720C11	Eccentric	1	
17	1800-B-06	Screw	1	SM1/4" X 40-3.5
18	842-05-08	Screw	1	SM9/32" X 28-13
19	1720C12	Crank cam	1	
20	8500-2-27.1	Screw	1	SM15/64" X 28-8
21	1720C13	Felt	1	
22	1720C14	Hand wheel	1	
23	1800-B17	Screw	1	SM5/16" X 24-13

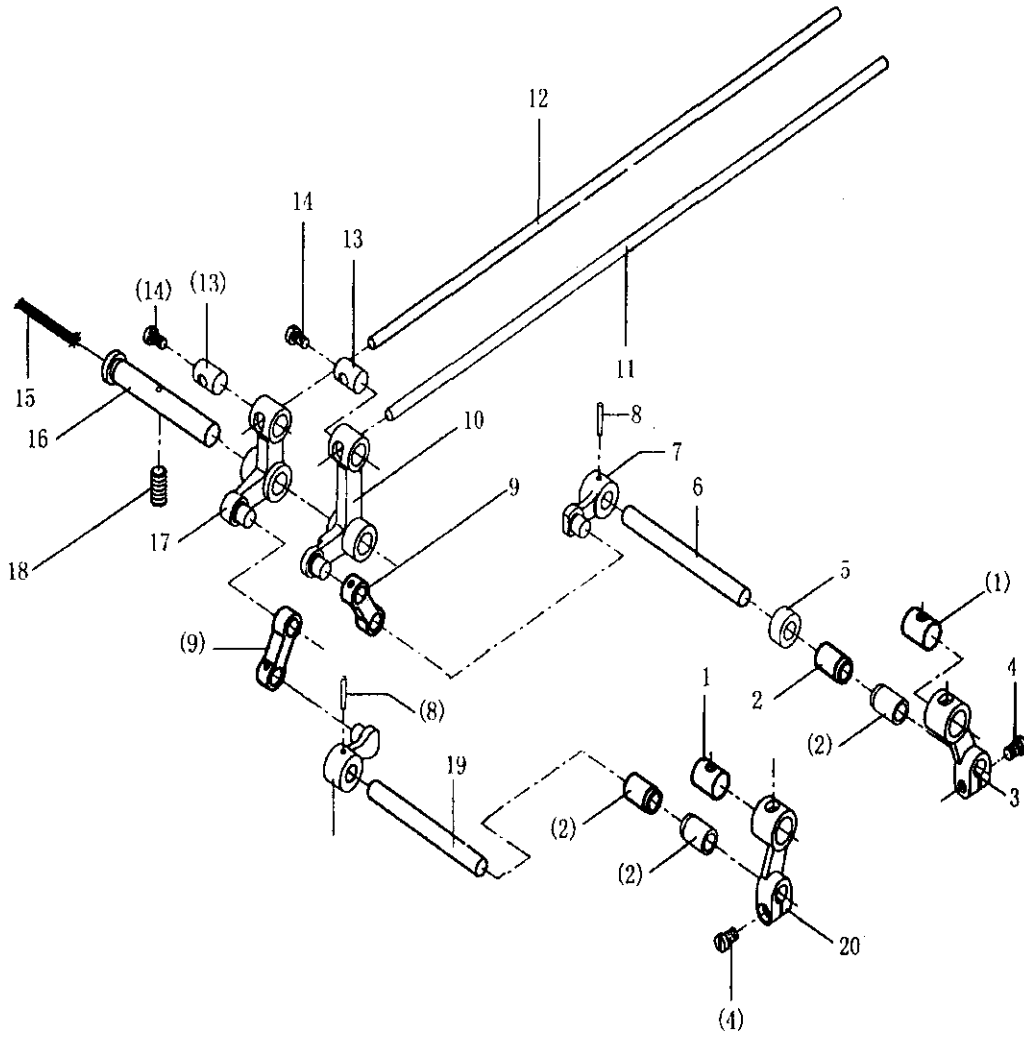
D: NEEDLE BAR AND THREAD TAKE-UP MECHANISM



D : NEEDLE BAR AND THREAD TAKE-UP MECHANISM

1	1720D01	Thread take-up lever	1	
2	1720D02	Link plate	1	
3	1720D03	Screw	2	SM11/64" X 40-8.5
4	1720D04	Slide block	1	
5	1720D05	Connecting crank rod	1	
6	1720D06	Support stud	1	
7		Oil wick	1	Ø 4 X 33
8	1720D07	Screw	1	SM15/64" X 28-20
9	1720D08	Support stud	1	
10	1720D09	Needle bar bushing (upper)	1	
11	842-08-31	Cap	1	
12	1720D10	Screw	2	SM11/64" X 40-8.5
13	1720D11	Needle bar	1	
14	8500-4-32	Screw	1	SM9/64" X 40-8
15	1720D12	Needle bar thread guide	1	
16	1720D13	Nut	1	SM1/8" X 44-2
17		Washer	4	4 GB98-85
18	8570-8-5	Nut	2	SM9/64" X 40-2.5
19		Spring washer	3	4 GB93-87
20	1720D14	Needle allocate block	1	
21	1720D15	Vertical guide shaft	2	
22	1720D16	Needle clamp (left)	1	
23	8350-36	Screw	2	SM9/64" X 40-5
24	8500-5-34	Screw	3	SM1/8" X 44-5.5
25	1720D17	Screw	2	SM9/64" X 40-6
26	1720D18	Needle clamp shaft	2	
27	1720D10	Supporting shaft	1	
28	8500-1-3	Screw	1	SM1/8" X 44-4.6
29	1720D20	Needle clamp	1	
30	1720D21	Needle clamp (right)	1	
31	1720D22	Connecting crank	1	
32		Oil wick	2	Ø 3 X 40
33	1720D23	Connecting stud	1	
34	1720D24	Needle bar bushing (lower)	1	
A		Needle	2	HAX1 # 11
B		Piercer	1	PKGX8

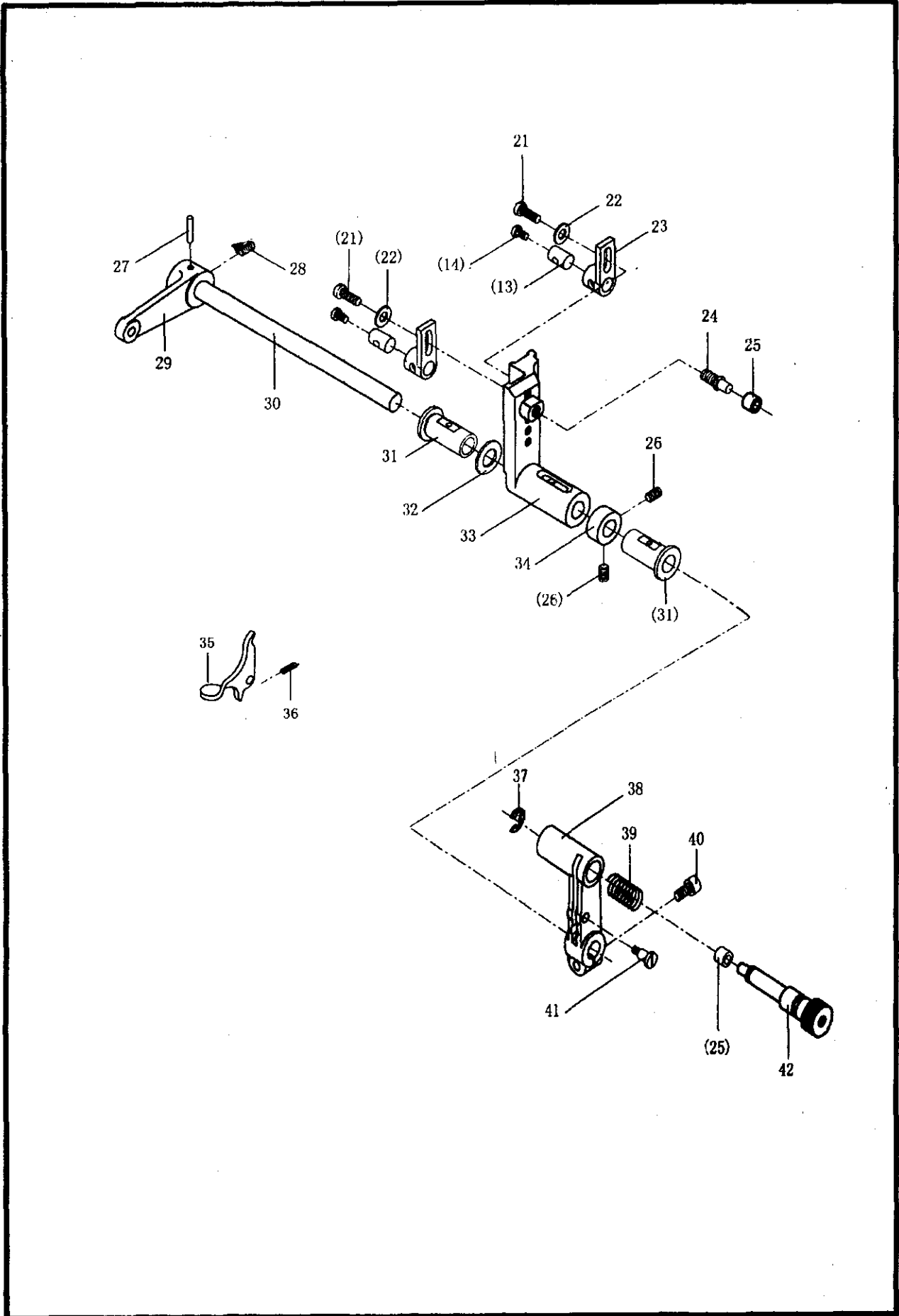
E : NEEDLE ROCKING MECHANISM (1 / 2)



E : NEEDLE ROCKING MECHANISM (1 / 2)

1	1720E01	Vibrating bushing	2	
2	1720E02	Needle vibrating shaft	4	
3	1720E03	Needle vibrating arm (front right)	1	
4	1720E04	Screw	2	SM11/64" x 40-9
5	1720E05	Spacer	1	
6	1720E06	Needle vibrating arm set (right)	1	
7	1720E07	Needle vibrating arm	2	
8		Pin	2	Ø 3 X 12 GB117-86
9	1720E08	Vibrating connecting link	2	
10	1720E09	Bell crank (large)	1	
11	1720E10	Flank rod (long)	1	
12	1720E11	Flank rod (short)	1	
13	1720E12	Flank rod bushing	4	
14	8500-2-19	Screw	4	SM9/64" X 40-6
15		Oil wick	1	Ø 4 X 55
16	1720E13	Bell crank shaft	1	
17	1720E14	Bell crank (small)	1	
18	8500-2-27.1	Screw	1	SM15/64" X 28-8
19	1720E15	Needle vibrating shaft	1	
20	1720E16	Needle vibrating arm (front left)	1	

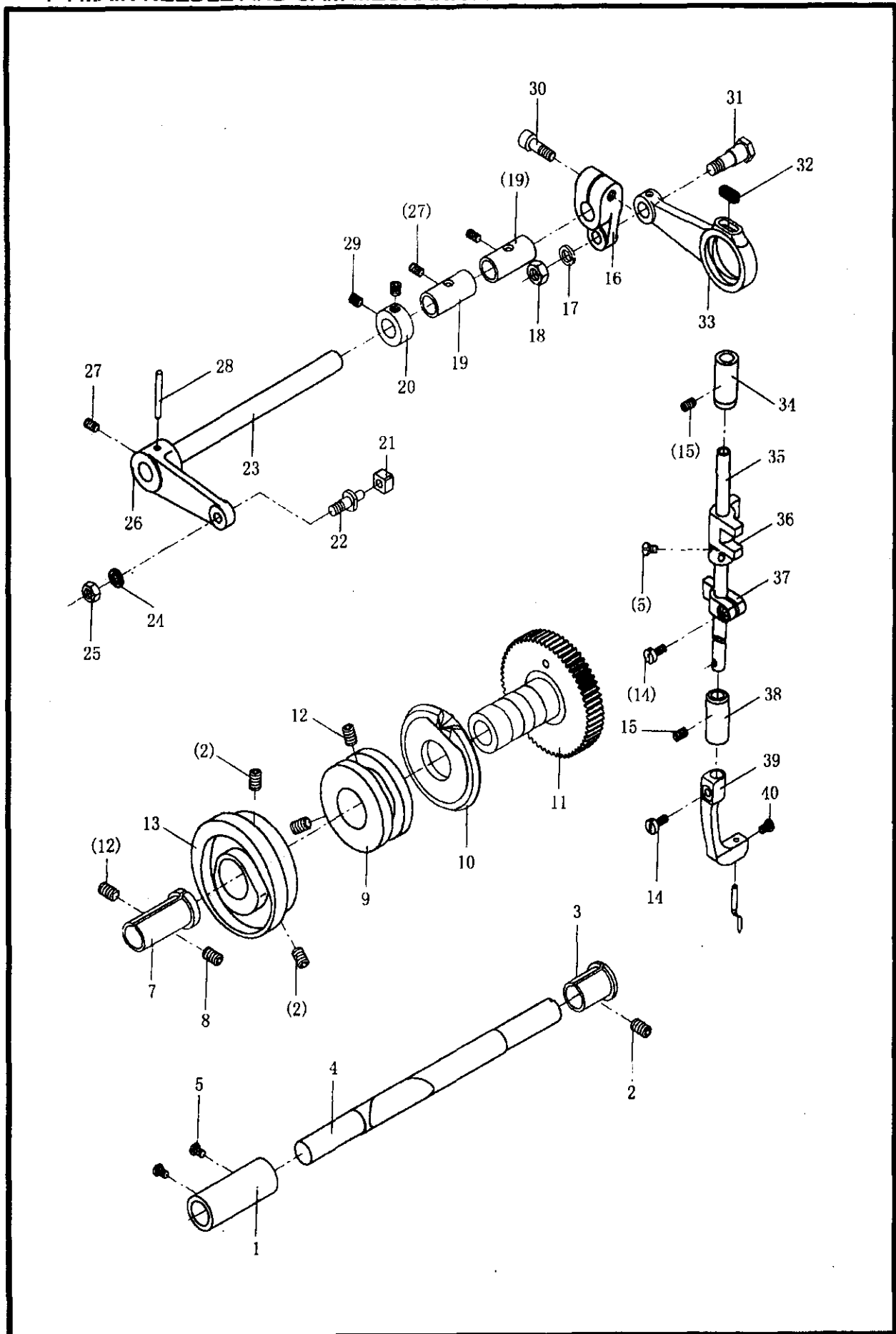
E : NEEDLE ROCKING MECHANISM (2 / 2)



E : NEEDLE ROCKING MECHANISM (2 / 2)

21	8520-6-39	Screw	2	SM11/64" x 40-12
22		Washer	2	5 GB97.1-85
23	1720E17	Slider	2	
24	1720E18	Needle vibr.lever rol. shaft roller	1	
25	1720E19	Roller	2	
26		Screw	2	M5X5 GB77-85
27		Pin	1	A3-X20 GB117-86
28	842-07-33	Screw	1	SM11/64" X 40-5
29	1720E20	Presser moving arm	1	
30	1720E21	Presser moving shaft	1	
31	1720E22	Bushing	2	
32	1720E23	Washer	1	
33	1720E24	Needle vibrating lever	1	
34	1720E25	Collar	1	
35	1720E26	Presser activating lever	1	
36	1720E27	Spring	1	
37	1720E28	E-ring	1	
38	1720E29	Lever	1	
39	1720E30	Spring	1	
40		Screw	1	M5X12 GB70-85
41	1720E31	Screw	1	SM9/64" X 40-5
42	1720E33	Lever base roller shaft	1	

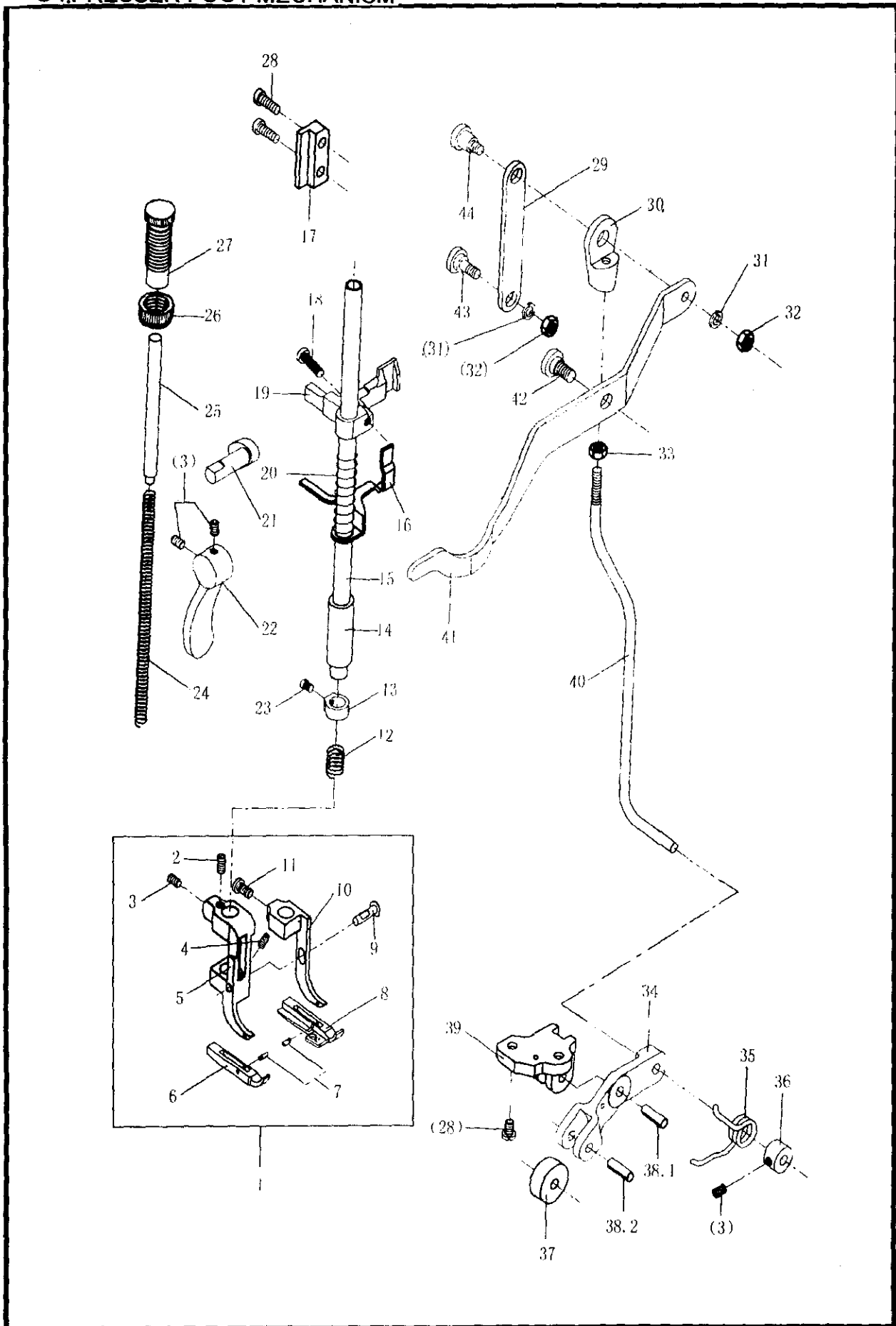
F: MAIN NEEDLE AND CAM MECHANISM



F : MAIN NEEDLE AND CAM MECHANISM

1	1720F01	Bushing (middle)	1	
2	8500-2-27.1	Screw	3	SM15/64" X 28-8
3	1720F02	Bushing (right)	1	
4	1720F03	Cam shaft	1	
5	8350-36	Screw	3	SM9/64" X 40-5
7	1720F04	Bushing (left)	1	
8	1720F05	Screw	1	SM15/64" X 28-5
9	1720F06	Cam	1	
10	1720F07	Presser moving cam	1	
11	1720F08	Feed lifting rock cam	1	
12	1720F09	Screw	3	SM15/64" X 28-4
13	1720F10	Feed rock cam	1	
14	8500-4-32	Screw	2	SM9/64" X 40-8
15	1720D10	Screw	2	SM11/64" X 40-8.5
16	1720F11	Crank	1	
17		Spring washer	1	6 GB93-87
18		Nut	1	M4 X 4.8 GB6170-86
19	1720F12	Bushing	2	
20	1720E25	Collar	1	
21	1720F14	Slide block	1	
22	1720F15	Block shaft	1	
23	1720F16	Feed rotating shaft	1	
24		Spring washer	1	5 GB93-87
25		Nut	1	M5X4 GB6170-86
26	1720E20	Main needle activating arm	1	
27	842-07-32	Screw	3	SM11/64" X 40-6
28		Pin	1	A3X20 GB117-86
29		Screw	2	M5X6 GB77-85
30		Screw	1	M5X15 GB70-85
31	1720F17	Screw	1	M6X6.5
32	1720F18	Oil felt	1	
33	1720F19	Connecting rod	1	
34	1720F20	Needle bar bushing (upper)	1	
35	1720F21	Main needle bar	1	
36	1720F22	Connecting stud	1	
37	1720F23	Needle bar guide	1	
38	1720F24	Needle bar bushing (lower)	1	
39	1720F25	Main needle clamp	1	
40	8350-36	Screw	1	SM9/64" X 40-4
A		Auxiliary piercer	1	PKZ X 1

G : PRESSER FOOT MECHANISM



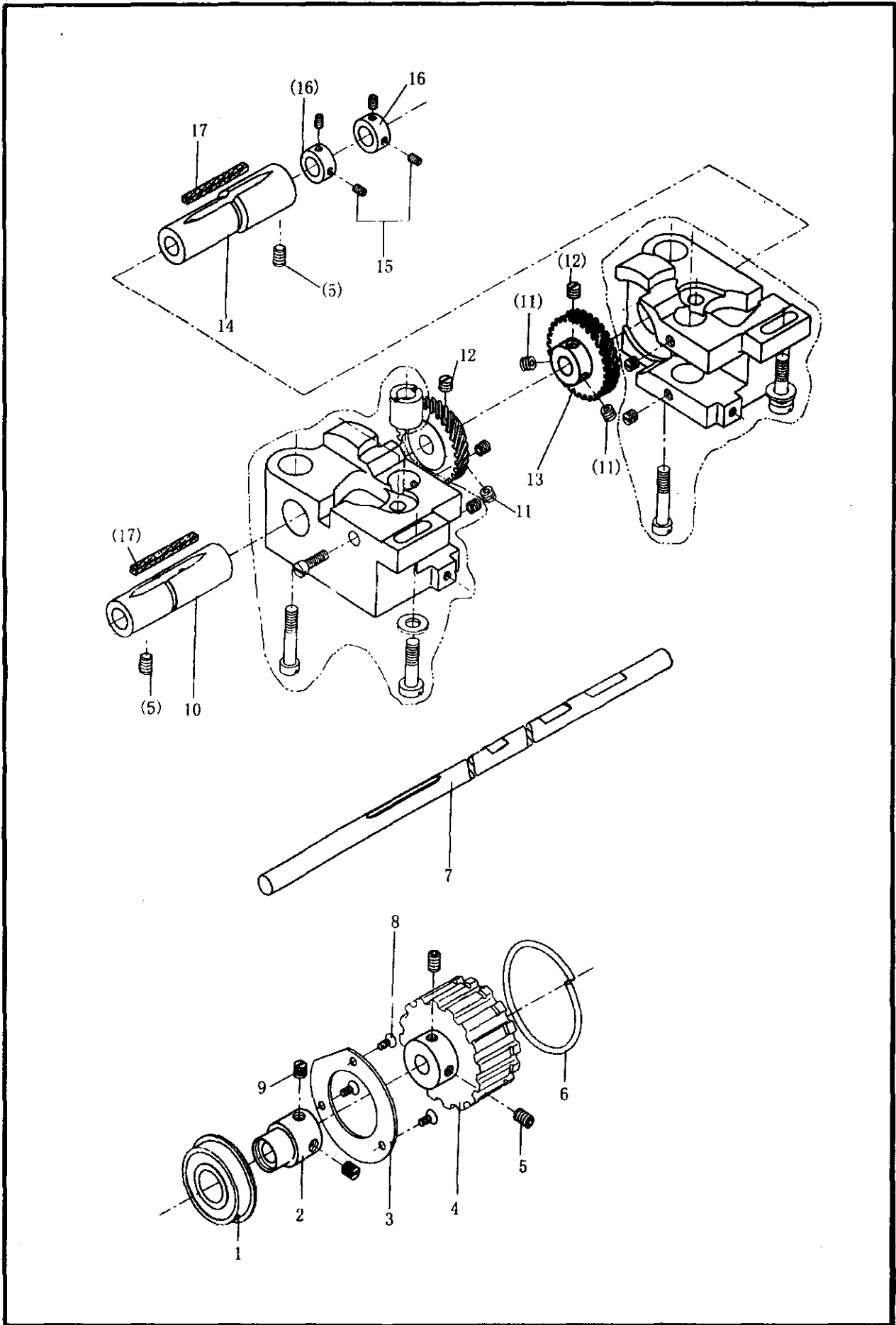
G : PRESSER FOOT MECHANISM

1	1720G01	Presser foot complete	1	
2	1720G02	Screw	1	SM11/64" X 40-10
3	842-07-33	Screw	4	SM11/64" X 40-5
4	1720G03	Screw	1	SM9/64" X 40-2.8
5	1720G04	Presser foot shank (left)	1	
6	1720G05	Presser foot sohl (left)	1	
7		Pin	2	Ø 1.5 X 5.5 GB119-86
8	1720G06	Presser foot sohl (right)	1	
9	1720G07	Pin	1	
10	1720G08	Presser foot shank (right)	1	
11	8500-5-53	Screw	1	SM11/64" X 40-8
12	1720G09	Spring	1	
13	1720G10	Collar	1	
14	1720G11	Presser bar bushing	1	
15	1720G12	Presser bar	1	
16	1720G13	Tension release bracket	1	
17	1720G14	Position plate	1	
18	1720G15	Screw	1	SM11/64" X 40-18
19	1720G16	Presser bar lifter	1	
20	1720G17	Spring	1	
21	1720G18	Shaft	1	
22	1720G19	Presser bar lifter	1	
23	8350-36	Screw	1	SM9/64" X 40-4
24	1720G20	Spring	1	
25	1720G21	Spring guide bar complete	1	
26	1720G22	Nut	1	SM1/2" X 28-8
27	1720G23	Adjusting screw	1	SM1/2" X 28-36
28	8520-6-39	Screw	4	SM11/64" X 40-12
29	1720G24	Knee lifter lever plate	1	
30	1800-E48	Joint	1	
31		Spring washer	2	5 GB93-87
32		Nut	2	M5X4 GB6170-86
33	8570-4-21	Nut	1	SM3/16" X 32-3
34	1720G25	Knee lifter bracket	1	
35	1720G26	Spring	1	
36	1720G27	Collar	1	
37	1720G28	Roller	1	
38.1		Pin	1	Ø 5X16 GB879-86
38.2		Pin	1	Ø 5X18 GB879-86
39	1720G29	Knee lifter bracket	1	
40	1720G30	Knee lifter connecting rod	1	
41	1720G31	Foot lifter lifting lever	1	
42	1720G32	Screw	1	SM1/4" X 24-8
43	1720G33	Screw	1	M5X7
44	1720G34	Screw	1	M5X8

H : FEED MECHANISM

1	1720H01	Washer	1	
2		Nut	4	M6X4.8 GB6170-86
3	1720F17	Screw	3	M6X6.5
4	1720H02	Collar	2	
5	1720H03	Feed rock shaft bushing	2	
6	1720H04	Feed bar shaft	1	
7		Oil wick	1	Ø 2.5 X 50
8	1720H05	Oil felt	2	
9	1720H06	Feed rock shaft crank	1	
10	8500-5-46	Screw	2	SM3/16" X 28-12
11	8500-5-53	Screw	2	SM11/64" X 40-7
12	8500-2-27.1	Screw	1	SM15/64" X 28-6
13	1800-B06	Screw	4	SM1/4" X 40-4.5
14		Screw	3	M5X12 GB70-85
15	1720H07	Crank	2	
16	1720H08	Feed rock shaft	1	
17		Screw	3	SM15/64" X 28-8
18		Spring washer	3	6 GB93-87
19	1720H09	Feed rock crank rod	1	
20	1720H10	Bushing	1	
21	1720H11	Rod pin	1	
22	1720H12	Feed rock drive grooved	1	
23	1720H13	Feed rock shaft	1	
24	1720F12	Bushing	2	
25	1720H15	Feed lifting rock vibrating arm	1	
26		Screw	2	M5X6 GB77-85
27	1720E25	Collar	1	
28	1720D10	Screw	2	SM11/64" X 40-8.5
29		Nut	1	M5X4 GB6170-86
30		Spring washer	1	5 GB93-87
31	1720H16	Roller shaft	1	
32	1720H17	Roller	2	
33	1720H18	Roller shaft	1	
34		Pin	1	A3 X 18 GB117-86
35		Washer	1	5 GB97.1-85
36	8570-8-12	Nut	1	SM11/64" X 40-3
37	8500-1-3	Screw	1	SM1/8" 44-3.5
38	1720H19	Feed bar	1	
39	1720H20	Feed dog	1	
40	8500-5-34	Screw	2	SM1/8" X 44-6
41	8350-36	Screw	1	SM9/64" X 4-5
42	1720H21	Crank rod	1	
43	1720H22	Bushing	2	
44	1720H23	Feed rock shaft	1	
45	1720H24	Shaft crank	1	
46	1720H25	Shaft	1	
47	1720H26	Block	1	
48	1720D13	Nut	1	SM1/8" X 44-2
49	1720H27	screw	1	SM1/8" X 44-12

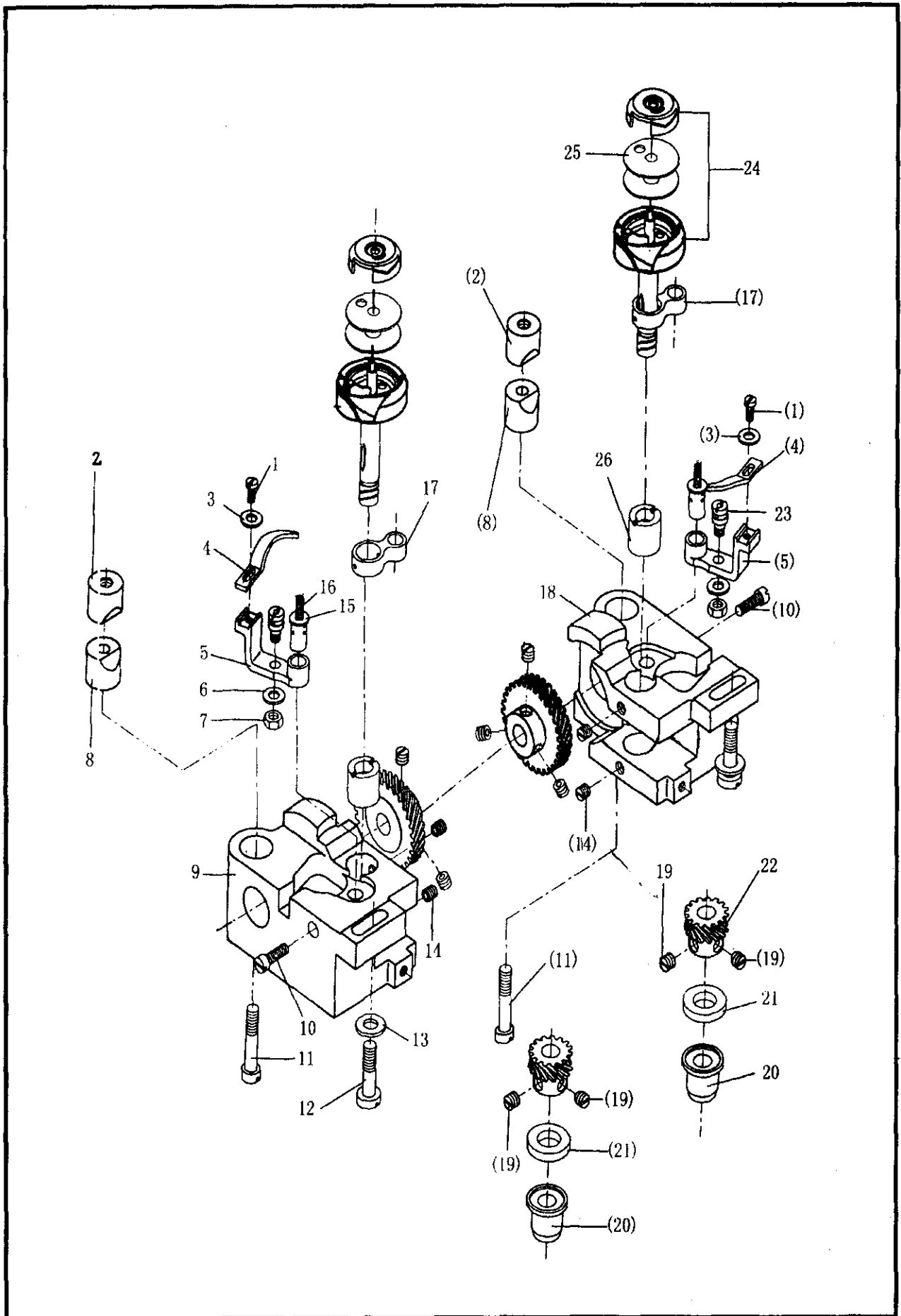
I: LOWER SHAFT MECHANISM



I : LOWER SHAFT MECHANISM

1		Bearing	1	Ø 17 X Ø 40 X 12
2	1720I01	Bearing holder	1	
3	1720I02	Bearing presser	1	
4	2710I03	Timing belt wheel	1	
5	8500-2-27.1	Screw	4	SM15/64" X 28-8
6	1720C03	Slide ring	1	
7	1720I04	Lower shaft	1	
8	842-07-26	Screw	3	SM9/64" X 40-8
9	8500-2-12	Screw	2	SM1/4" X 40-6
10	1720I05	Lower shaft bushing (right)	1	
11	1800-B06	Screw	4	SM1/4" X 40-4.5
12	842-09-5.3	Screw	2	SM1/4" X 40-5.5
13	842-09.5.5	Spiral gear	2	
14	1720I07	Lower shaft bushing (left)	1	
15		Screw	4	M4X4 GB77-85
16	1720I08	Collar	2	
17	1720I09	Oil felt	2	

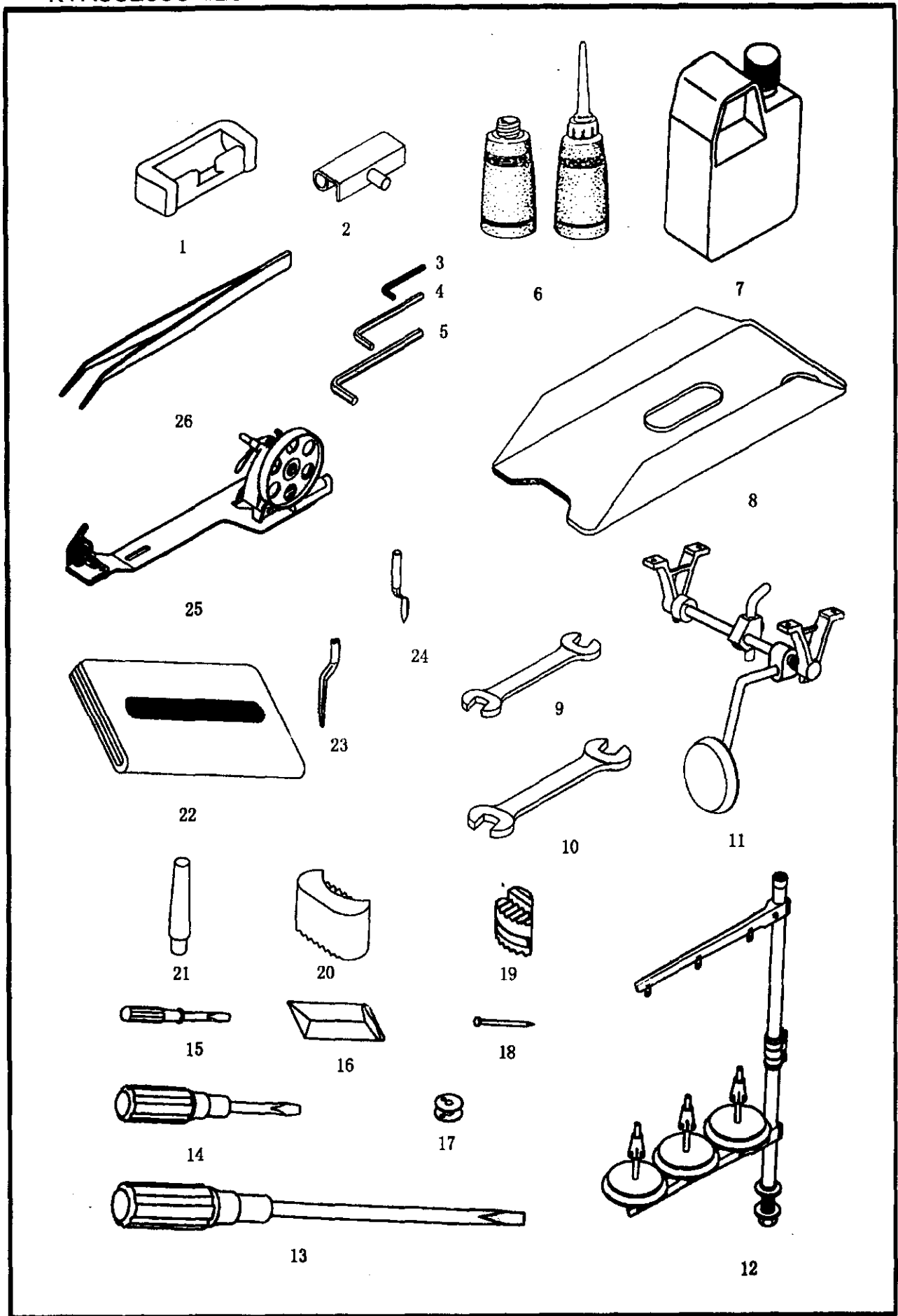
J. ROTARY HOOK MECHANISM



J : ROTARY HOOK MECHANISM

1	8500-4-32	Screw	2	SM9/64" X 40-8
2	1720J01	Pinch sleeve (upper)	2	
3		Washer	2	4 GB97.2-85
4	1720J02	Bobbin case opener	2	
5	1720J03	Opener crank	2	
6		Washer	2	5 GB97.2-85
7	8570-4-21	Nut	2	SM3/16" X 32-3.5
8	1720J04	Pinch sleeve (lower)	2	
9	1720J05	Rotary hook base left	1	
10	8500-5-44	Screw	2	SM3/16" X 28-15
11	842-07-27.1	Screw	2	SM15/64" X 28-31.4
12	842-07-3	Screw	2	SM1/4" X 28-25
13		Washer	2	7 GB97.2-85
14	1800-C11	Screw	4	SM15/64" X 28-4.5
15	1720J06	Opener crank stud	2	
16		Oil wick	2	Ø 3 X 15
17	1720J07	Opener link	2	
18	1720J08	Rotary hook base (right)	1	
19	1800-B06	Screw	4	SM1/4" 40-4.5
20	1720J09	Bushing	2	
21	1720J10	Spacer	2	
22	842-09-5.4	Pinion	2	
23	1720J12	Screw	2	
24		Hook	2	
25	1720J13	Bobbin	2	
26	1720J14	bushing	2	

K : ACCESSORIES



K : ACCESSORIES

1	8500-10-2	Rubber hinge	2	
2	8200-10-1	Head hinge	2	
3		Wrench 2 mm	1	2 mm
4		Wrench 3 mm	1	3 mm
5		Wrench 4 mm	1	4 mm
6	1800HY01	Oiler	1	Ø68X170
7	1800HY02	Oil can	1	96X44X150
8	1720K01	Oil pan	1	
9		Spanner 6x7	1	6X7
10		Spanner 8x10	1	8X10
11	720K02	Knee lifter assy	1	
12	842-12-40	Thread stand	1	
13	1800HY03	Screw driver	1	
14	1800HY04	Screw driver	1	
15	1800HY05	Screw driver	1	
16		Package of needles	1	HAX1 # 11
17	1720J13	Bobbin	4	
18		Nail	1	1 1/4 (31.75)
19	1720K11	Head cushion	2	
20	1720K12	Head cunshion	2	
21	1720K13	Head rest	1	
22	1720K14	Dust cover	1	
23		Piercer	1	PKG X 8
24		Auxiliary piercer	1	PKZ X 1
25	1800HK02	Bobbin winder	1	
26		Tweezers	1	