



**ZZ 1266-3S**

**ZZ 1267-3S**

**SERVICE MANUAL**

## ***Straight Stitch Alignment.***

### ***REQUIREMENT.***

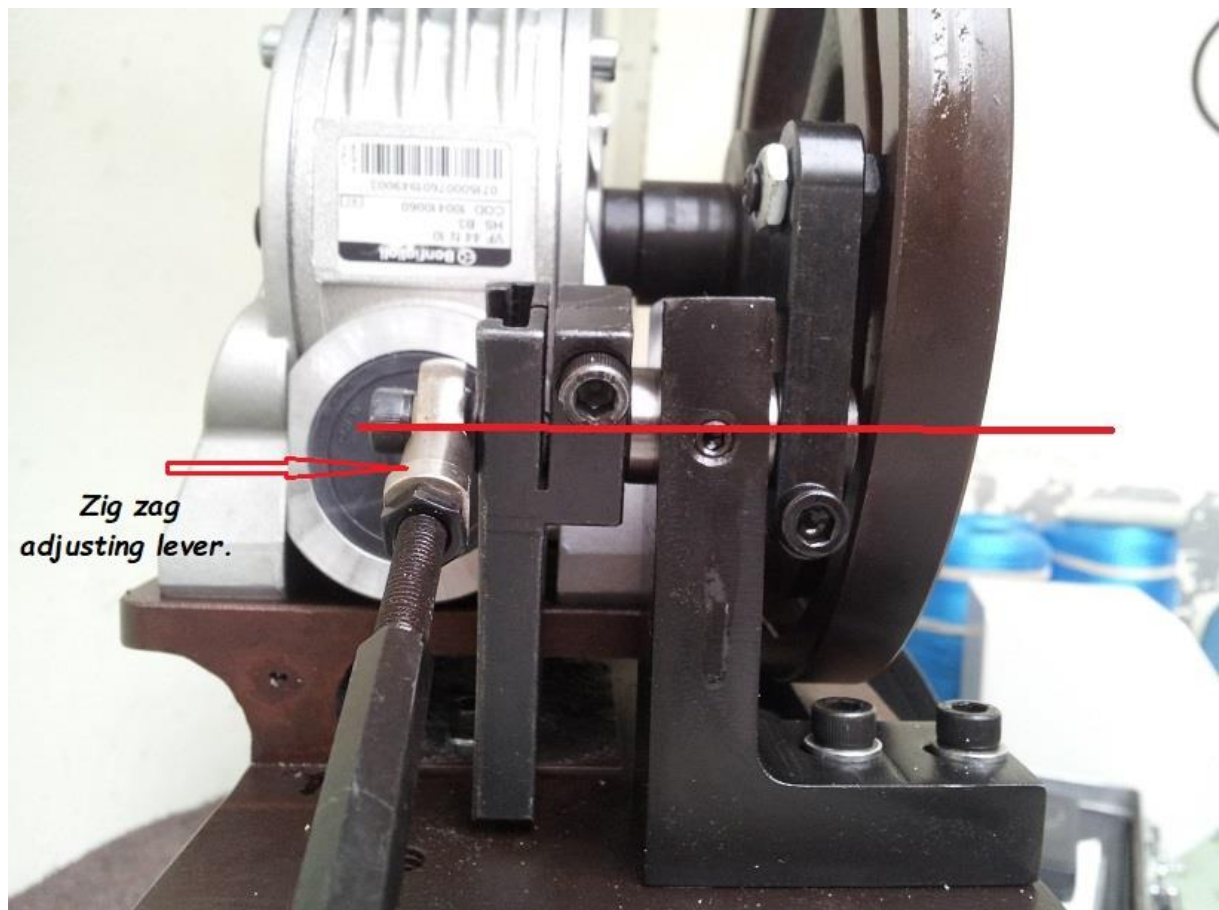
*Place paper over needle plate, turn hand wheel until needle on downward motion just enters the paper.*

*Now turn hand wheel in reverse direction until needle again enters into the paper.*

*Needle should enter the same hole.*

### ***ADJUSTMENT.***

*See Photo below.*

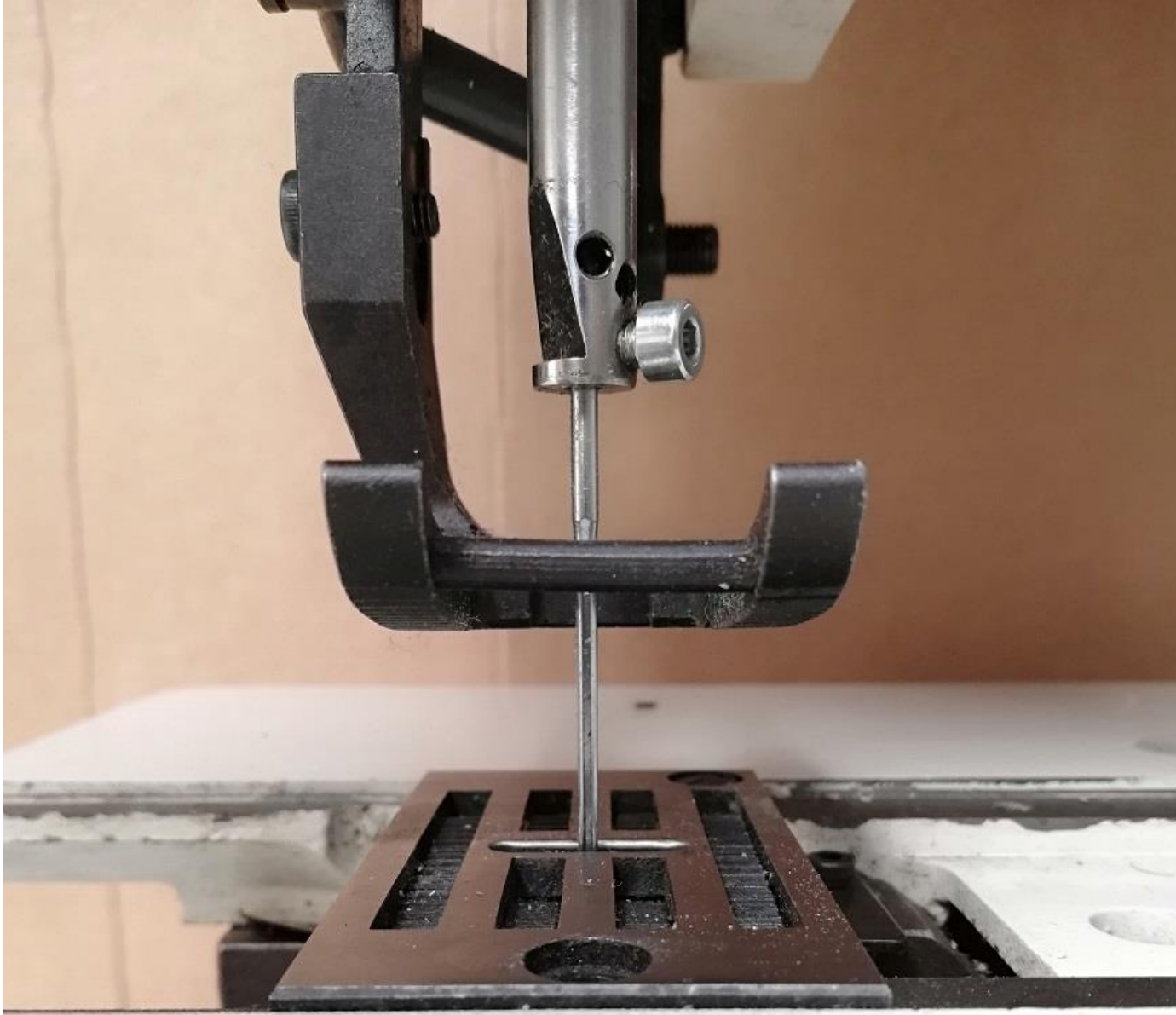


*First, you must make the zig zag adjusting lever to zero (straight stitch).*

***Straight Stitch Lateral Setting.***

**REQUIREMENT.**

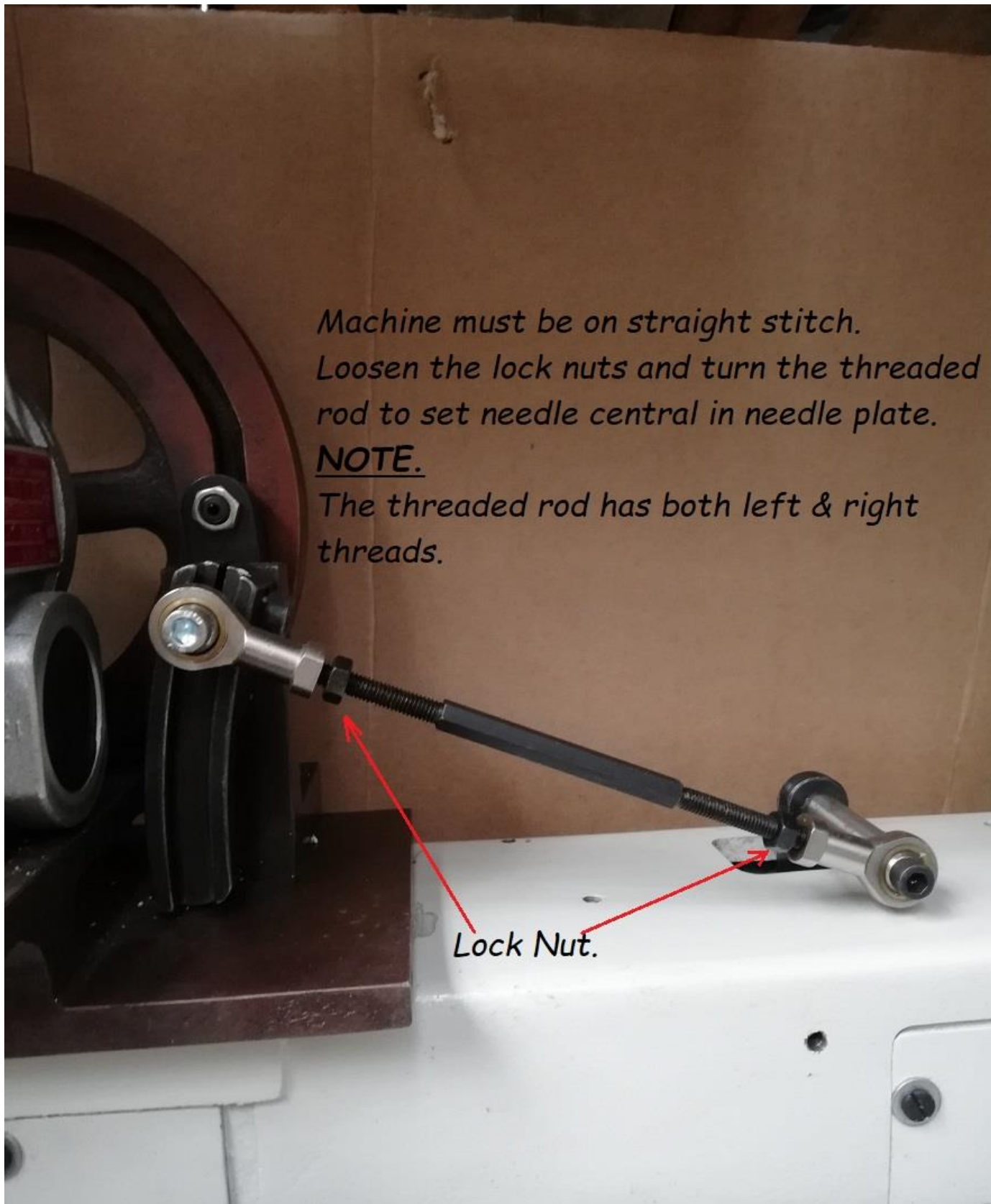
*Needle must be central in needle hole. See photo below.*



***Centralise needle in needle hole.***

## ADJUSTMENT.

See photo below.





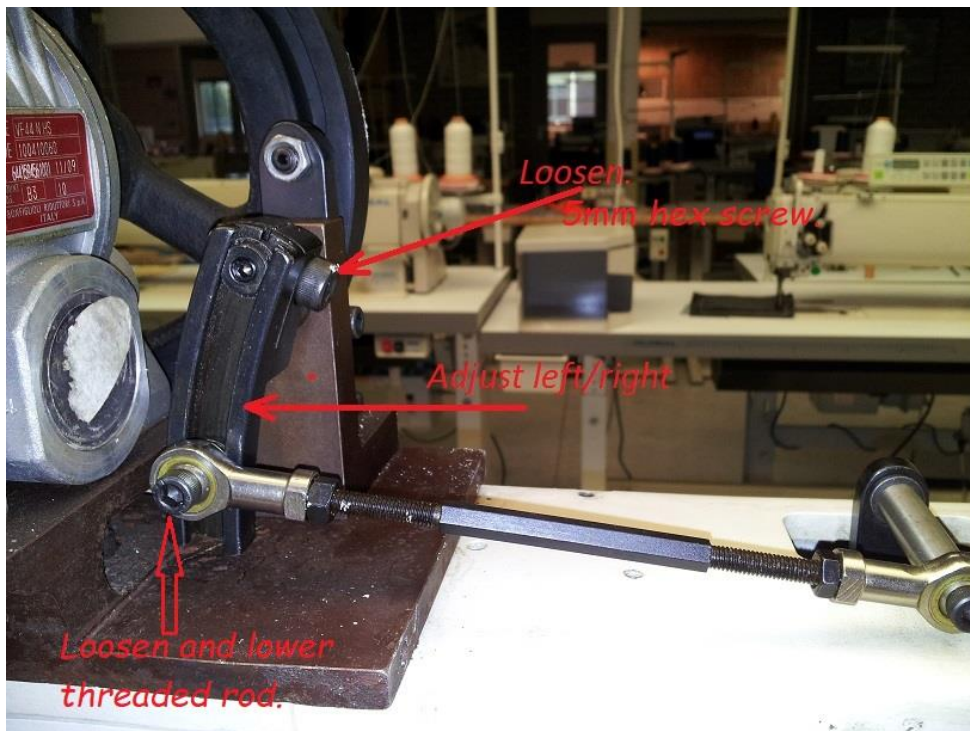
## *Maximum Zigzag Lateral Setting.*

### *REQUIREMENT.*

*Needle must be the equal from edge of needle hole on both left & right position.*

### *ADJUSTMENT.*

*See photo below.*



*Lower threaded rod to make wide zig zag. Loosen 5mm hex screw and adjust lever left or right to centralise needle on wide zig zag.*

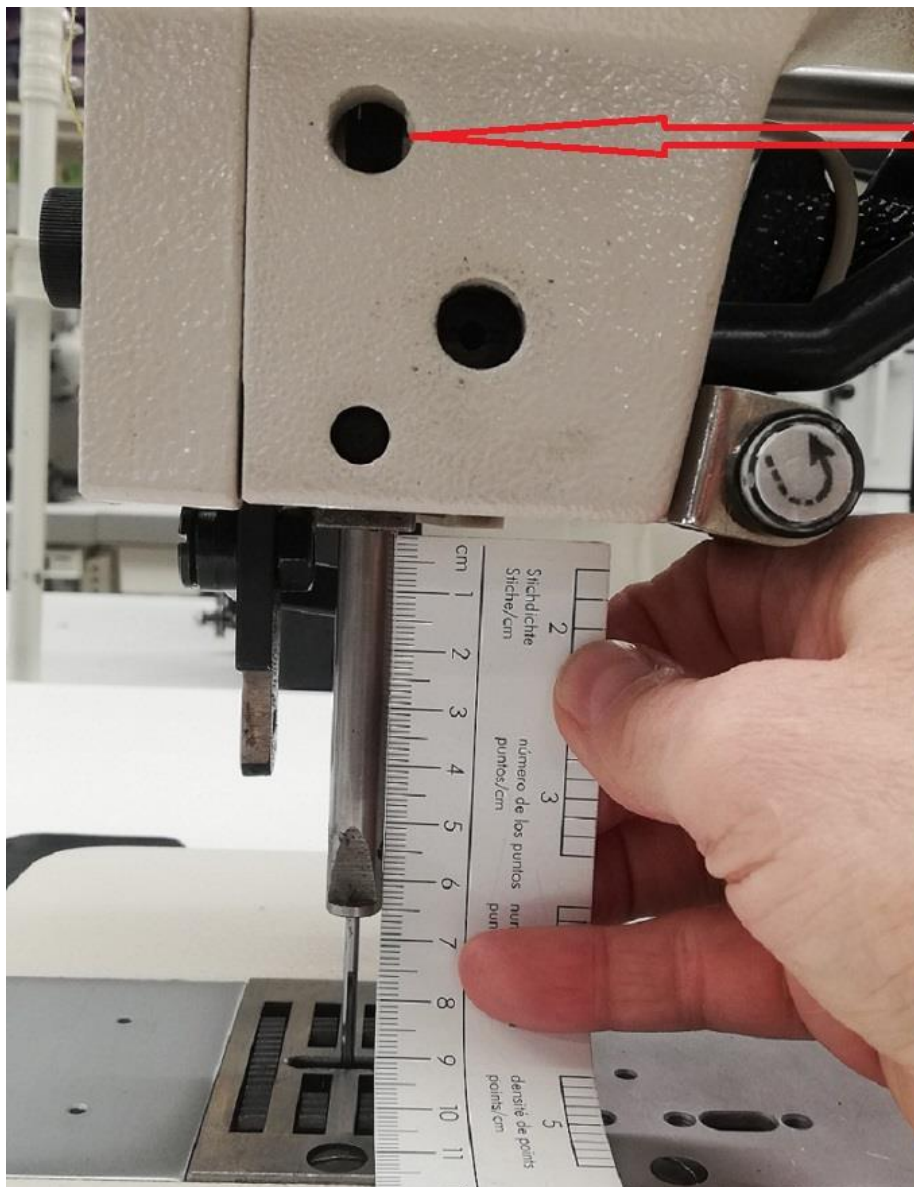
## ***Needle Bar Height.***

### ***REQUIREMENT.***

*With needle bar at lowest point, (B.D.C.), from needle bar frame to end of needle bar is 66mm.*

### ***ADJUSTMENT.***

*Loosen hex screw, and raise/lower needle bar. See photo below.*



*Loosen 3mm hex screw.*

*Needle bar at lowest point. (B.D.C.)  
From needle bar frame to end of needle bar is 66mm.*

### **NOTE.**

*This measurement could change depending on the sewing operation.*

## ***Shuttle Timing.***

### **REQUIREMENT.**

*When needle has been raised 5mm from B.D.C. point of shuttle must be at centre line of needle. See photo below.*



### ***Set On Straight Stitch.***

*Turn handwheel until needle is at B.D.C. continue to turn handwheel until needle on the up stroke is raised 5mm. At this time point of shuttle must be in centre line of needle.*

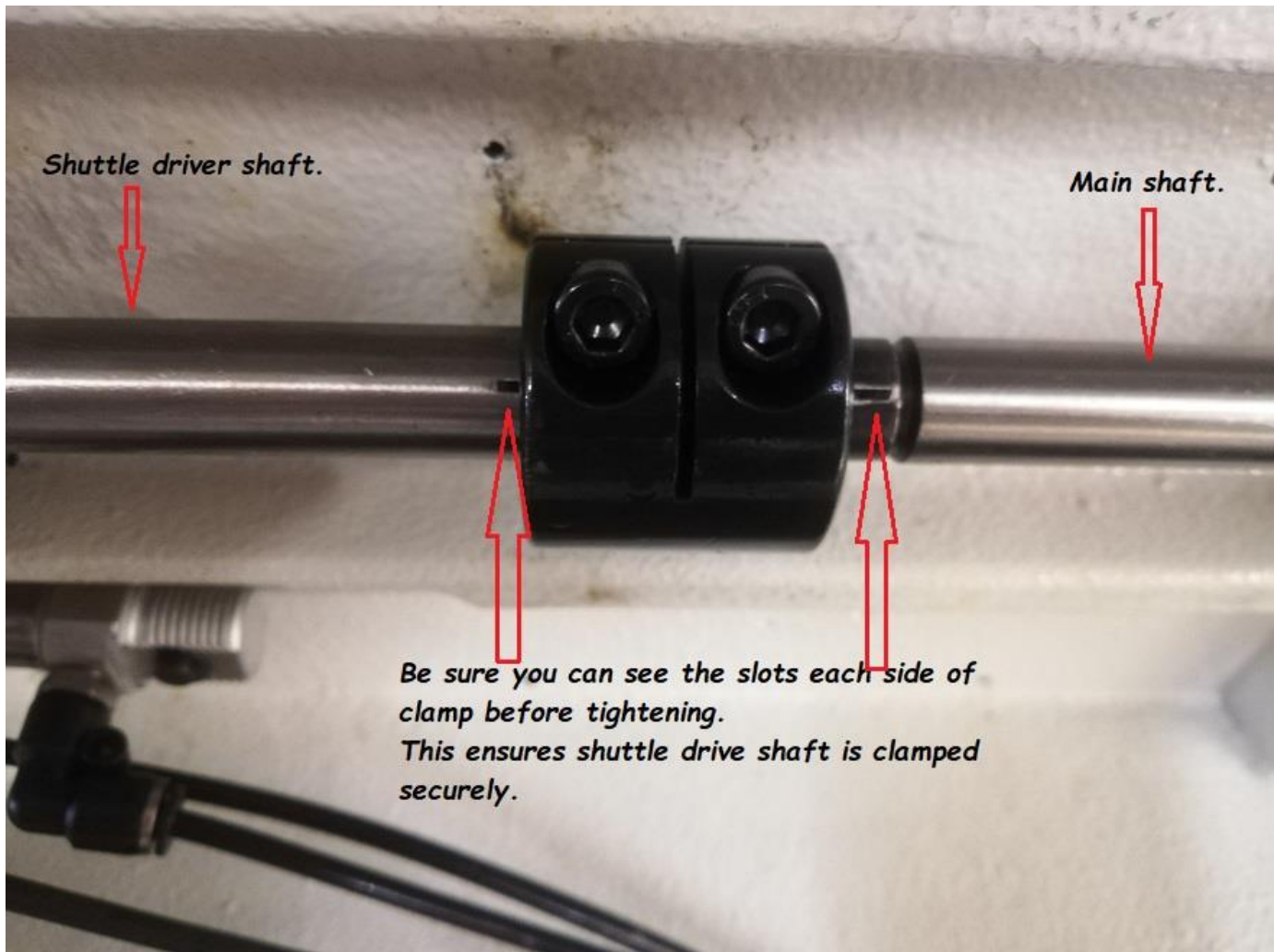
### **NOTE.**

*This setting could change depending on sewing operation.*



## ADJUSTMENT.

*Loosen clamp and adjust shuttle driver shaft. See photo below.*

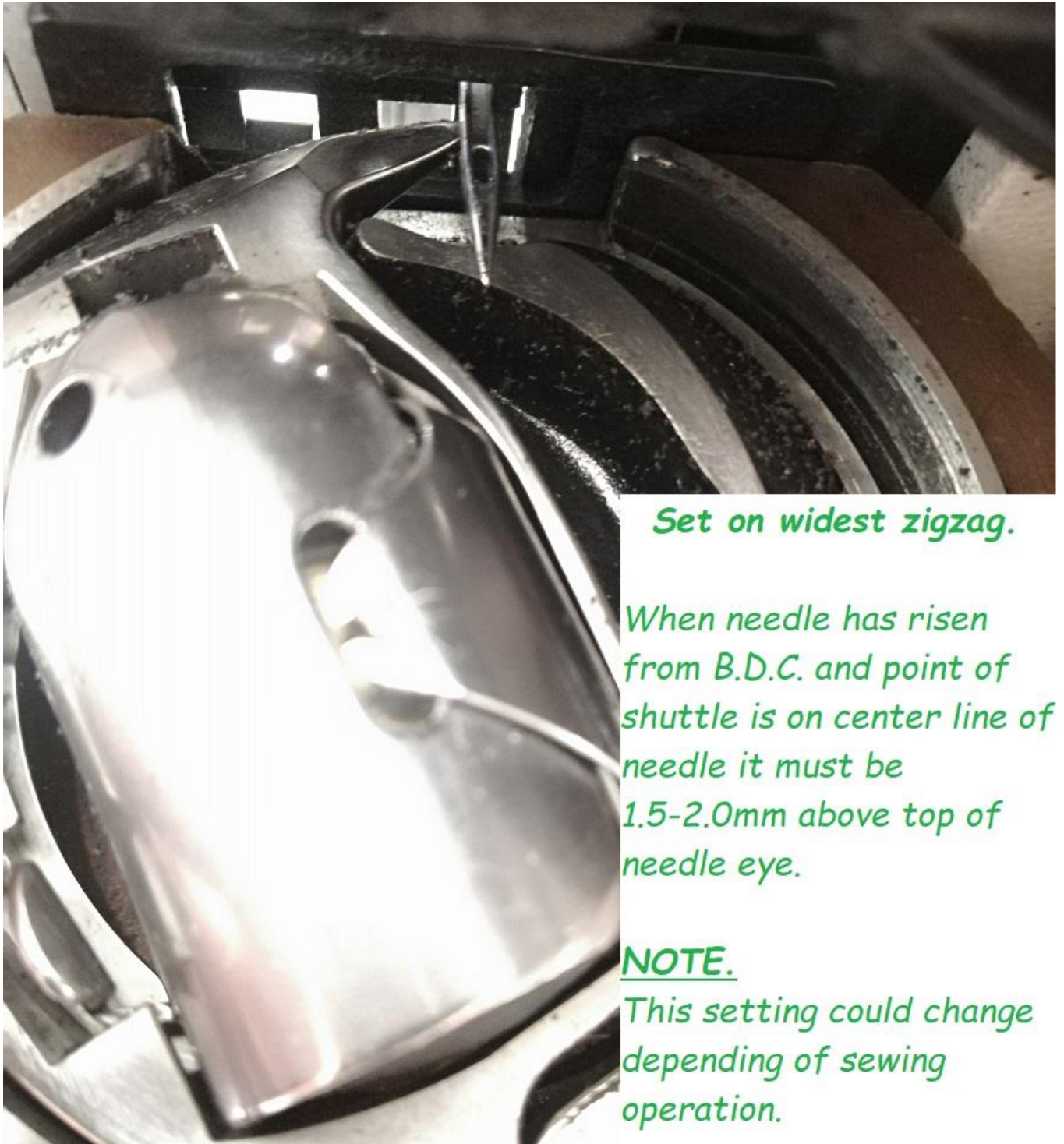




*Check Needle Bar Height on Widest Zigzag.*

**REQUIREMENT.**

*On widest zigzag, needle on right side, the point of shuttle must be 1.5-2.0mm above top of needle eye. See photo below.*



*Set on widest zigzag.*

*When needle has risen from B.D.C. and point of shuttle is on center line of needle it must be 1.5-2.0mm above top of needle eye.*

**NOTE.**

*This setting could change depending of sewing operation.*

## ADJUSTEMENT.

Loosen hex screw and raise/lower needle bar. See photo below



Loosen 3mm hex screw.

Needle bar at lowest point. (B.D.C.)  
From needle bar frame to end of needle bar is 66mm.

### NOTE.

This measurement could change depending on the sewing operation.



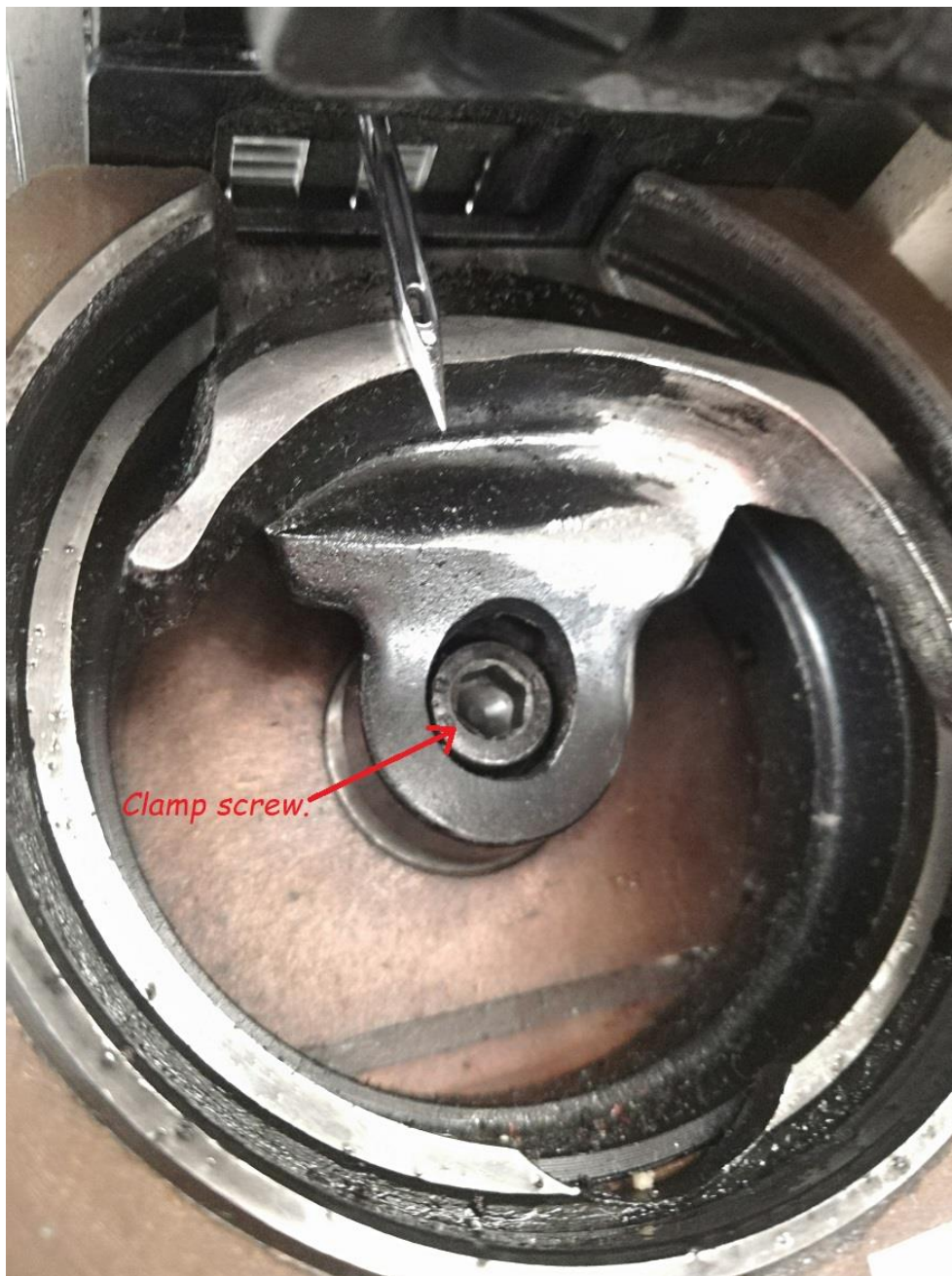
## *Needle Guard.*

### *REQUIREMENT.*

*With needle at B.D.C. face of shuttle driver must touch, but not deflect needle.*

### *ADJUSTMENT.*

*See photo below.*



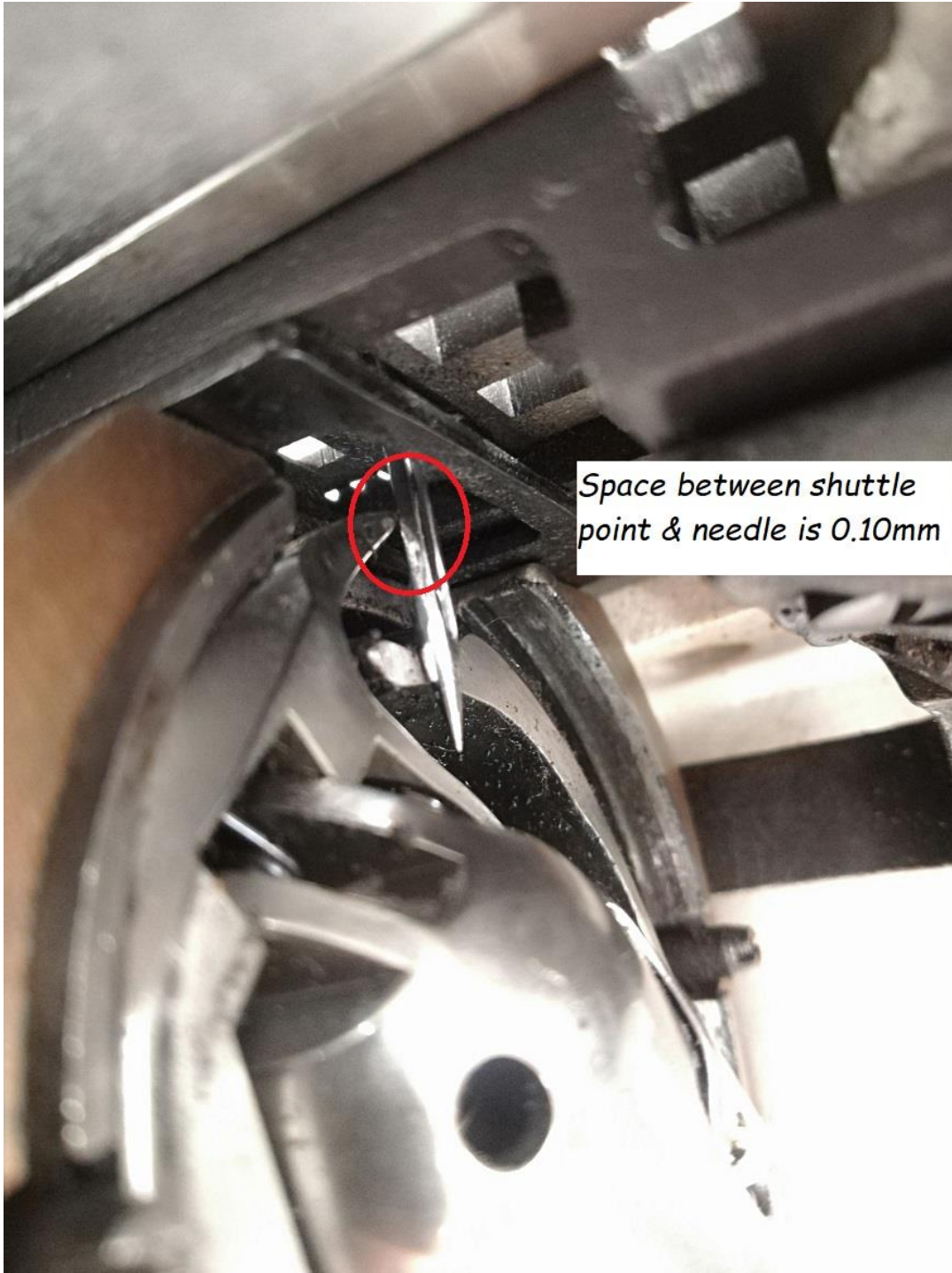
*Remove shuttle driver clamp screw & shuttle driver.*

*Inside where shuttle driver fits are spacing washers. Either add or remove washers to set driver to guard needle as required.*

*Clearance between shuttle point & needle.*

**REQUIREMENT.**

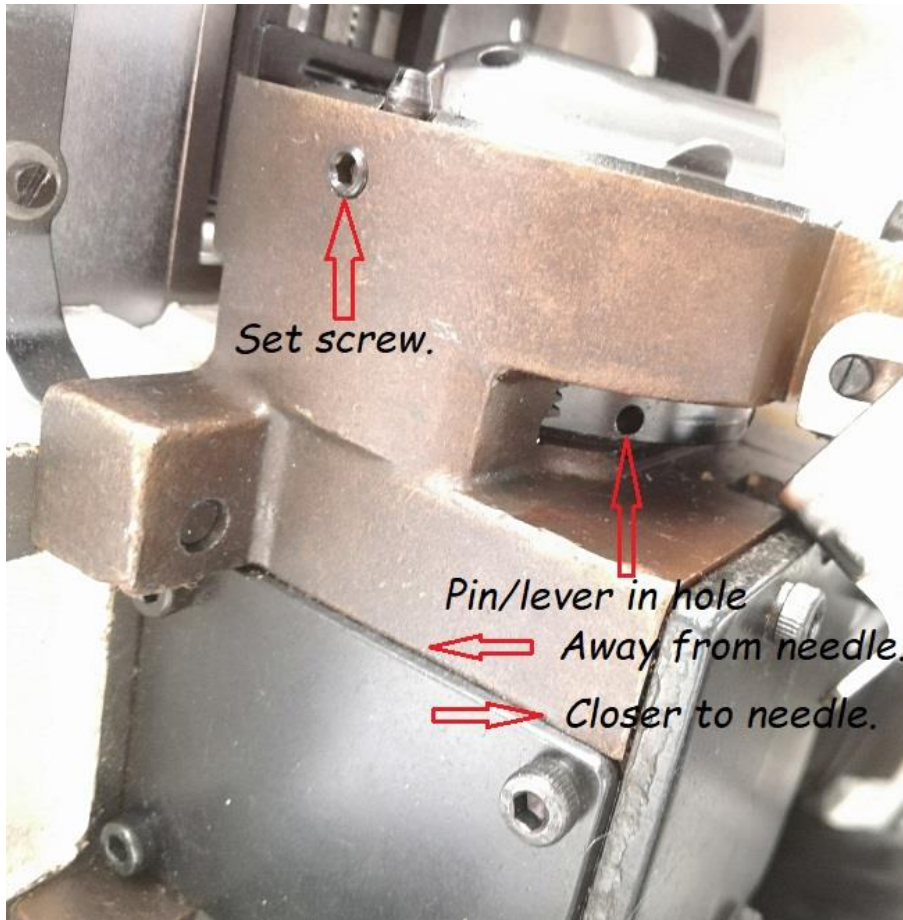
*At shuttle timing space between point of shuttle & needle must be 0.10mm. See photo below*





*ADJUSTMENT.*

*See photo below.*



*Loosen set screw. With a pin/lever adjust race to needle.*