

GLOBAL

ZZ 9567-75

LONG-ARM PATTERN ZIGZAG MACHINE

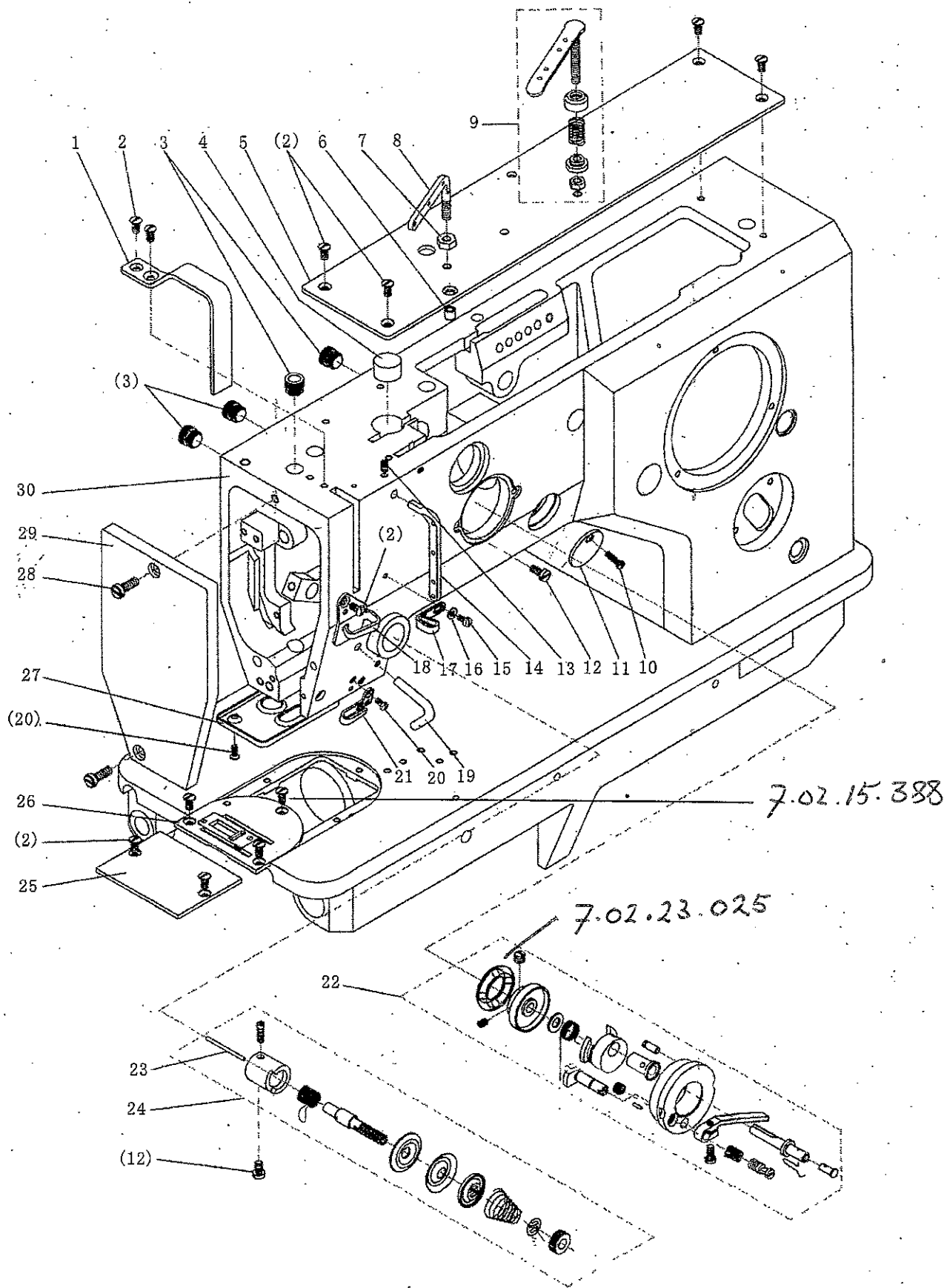
PARTS MANUAL

WWW.GLOBALSEW.COM





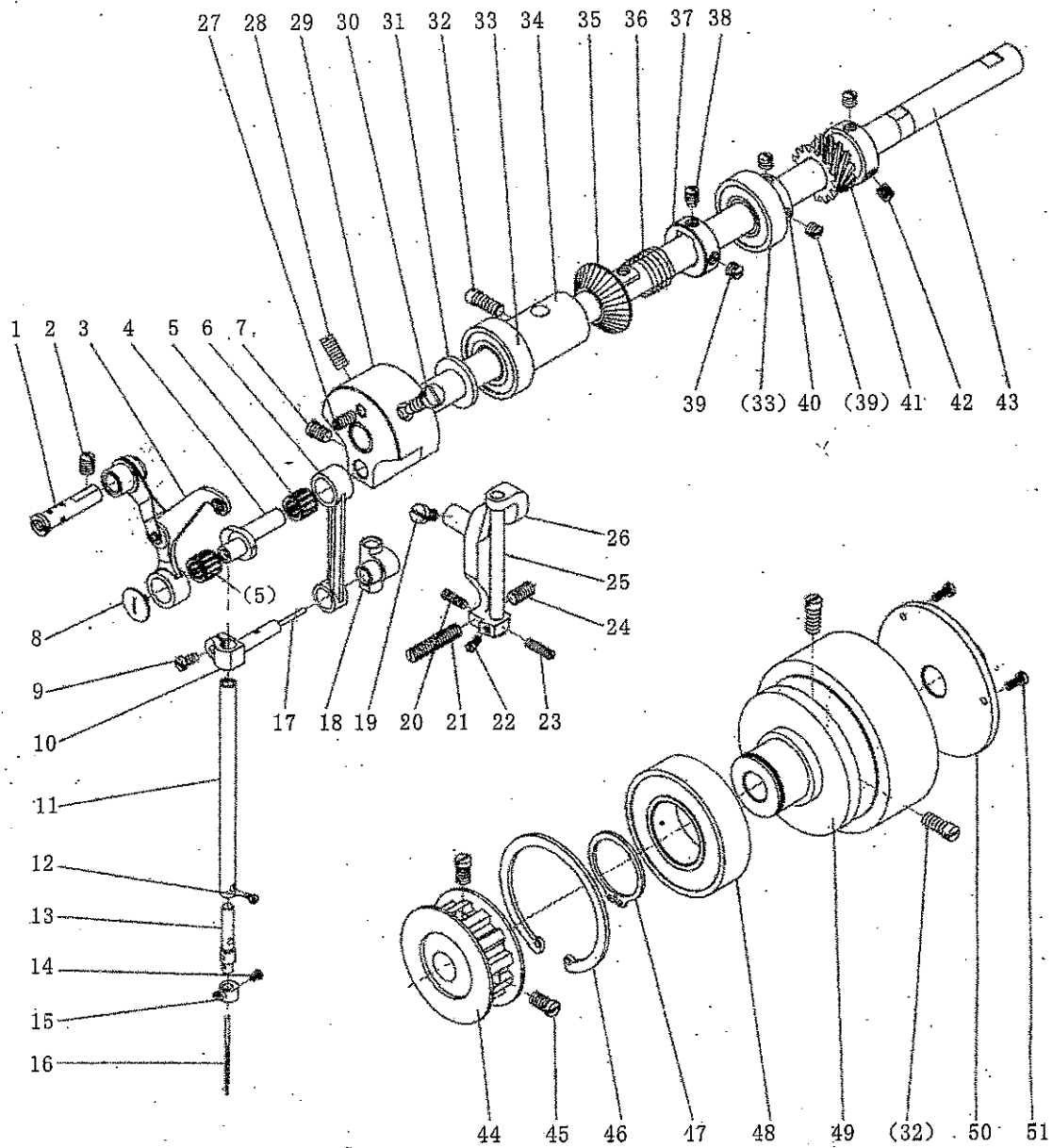
A. Arm bed and its accessories



A、 Arm bed and its accessories

No.	PartNo.	Name	Qty.		Remark
			82800	82800-D	
A01	7.02.11.059	Thread take up lever guard cover	1	1	
A02	7.02.15.388	Thread take up lever guard cover screw	12	10	M4×8
A03	7.02.16.058	Plastic plug	5	4	
A04		Felt	1	1	
A05	7.02.11.060	Top cover	1	1	
A06	7.02.16.078	Aluminium oil spile	1	1	
A07		Nut	1	1	
A08	7.02.14.031	Thread guide lever(upper)	1	1	
A09	7.02.14.032	Winder thread clip small assy.	1	1	
A10	7.02.15.393	Round cover screw	1	1	M3×12
A11	7.02.11.063	Round cover	1	1	
A12	7.02.15.006	Winder fixed screw	3	3	M4×8
A13	7.02.15.391	Thread guide lever (middle) screw	1	1	M4×5
A14	7.02.14.029	Thread guide lever (middle)	1	1	
A15	7.02.15.392	Thread guide plate screw	1	1	M3×6
A16	7.02.18.070	Screw washer	1	1	GB/T97.1 3
A17	7.02.14.028	Thread guide plate	1	1	
A18	7.02.14.027	Thread guide plate	1	1	
A19	7.02.14.025	Thread guide lever(lower)	1	1	
A20	7.02.15.390	Lower thread guide plate screw	3	3	M3×8
A21	7.02.14.026	Lower thread guide plate	1	1	
A22	7.02.01.044	Winder assy.	1	1	
A23	7.02.10.088	Release pin	1	1	
A24	7.02.01.038	Thread tension assy.	1	1	
A25	7.02.02.085	Slide plate	1		
A26	7.02.02.086	Needle plate	1	1	
A27	7.02.11.062	Felt splint	1	1	
A28	7.02.15.389	Panel screw	2	2	M5×14
A29	7.02.11.061	Panel	1	1	
A30	7.01.02.013	Machine frame	1	1	

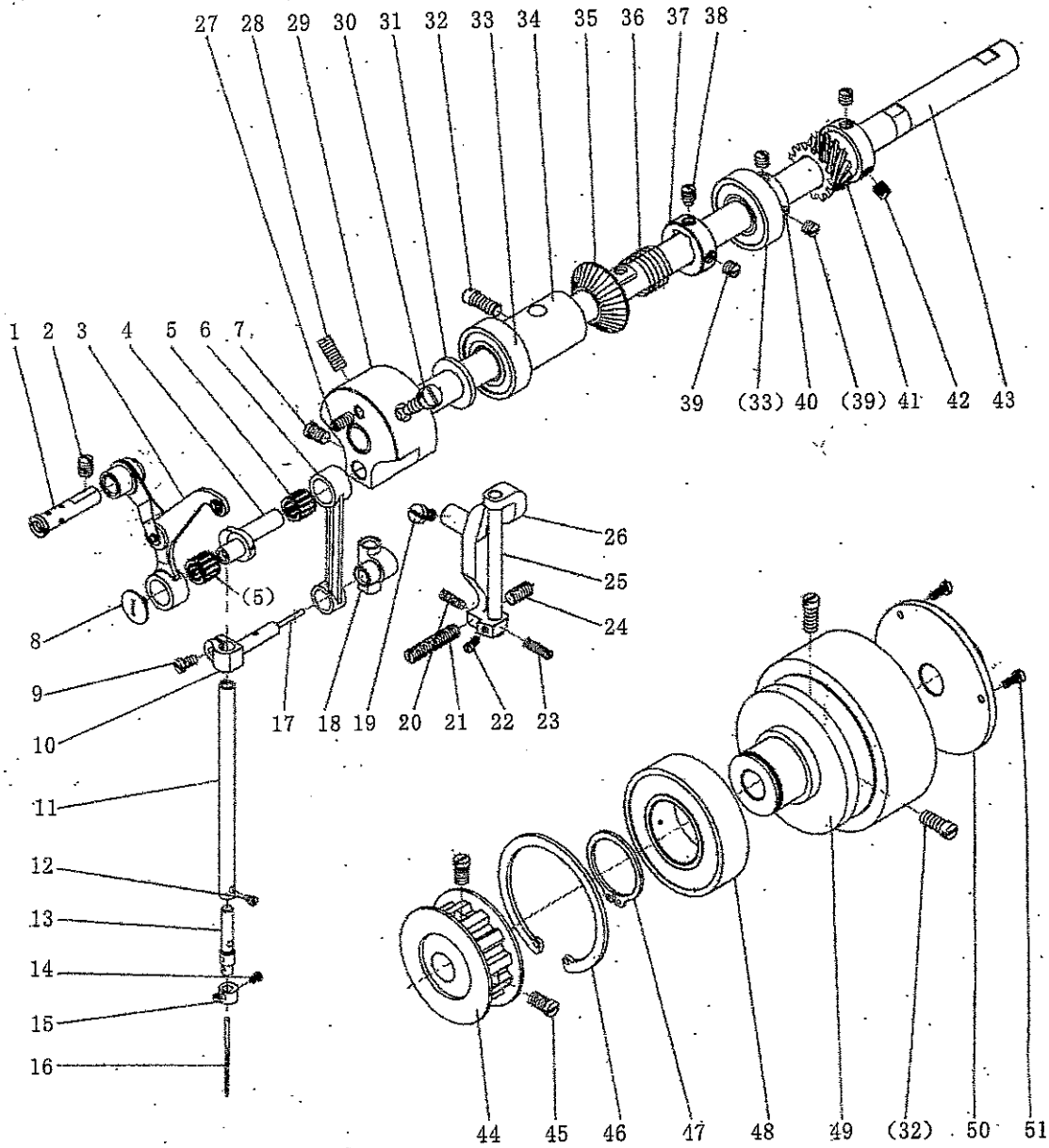
B、 Arm shaft and needle bar thread take up parts



B、 Arm shaft and needle bar thread take up parts

No.	PartNo.	Name	Qty.		Remark
			82800	82800-D	
B01	7.02.10.091	Thread take up lever support stud	1	1	
B02	7.02.15.411	Thread take up lever support stud screw	1	1	M6(0.75)×8
B03	7.02.05.066	Thread take up lever assy.	1	1	
B04	7.02.06.036	Libra crank	1	1	
B05	7.02.04.025	Bearing	2	2	HK0810
B06	7.02.05.067	Needle bar link rod	1	1	
B07	7.02.15.395	Libra crank screw	1	1	M6(0.75)×7.5
B08	7.02.15.413	Thread take up crank screw	1	1	9/64(40)×5.5(left)
B09	7.02.15.408	Needle bar joint screw	1	1	M4×8
B10	7.02.02.088	Needle bar joint	1	1	
B11	7.02.03.071	Needle bar	1	1	
B12	7.02.15.409	Needle clamp shaft screw	1	1	M2.5×5
B13	7.02.10.090	Needle clamp shaft	1	1	
B14	7.02.15.412	Screw	1	1	M3×5.8
B15	7.02.14.030	Needle clamp washer	1	1	
B16	7.02.21.140	Needle	1	1	19 [#]
B17		Needle bar joint oil wick	1	1	Φ2×25mm
B18	7.02.05.065	Needle bar connection holder	1	1	
B19	7.02.15.056	Needle bar connection bracket tighten screw	1	1	M5×5
B20	7.02.15.400	Needle bar connection bracket screw (back)	1	1	M4×12
B21	7.02.15.401	Needle bar connection bracket screw (left)	1	1	M6(0.75)×30
B22	7.02.15.037	Needle bar connection bracket shaft screw	1	1	M3×6
B23	7.02.15.404	Needle bar connection bracket screw (front)	1	1	M4×16
B24	7.02.15.403	Needle bar connection bracket screw (right)	1	1	M6(0.75)×11
B25	7.02.10.089	Needle bar connection bracket shaft	1	1	
B26	7.02.05.064	Needle bar connection bracket	1	1	
B27	7.02.15.396	Tighten screw	1	1	M5×10
B28	7.02.15.397	Needle bar crank tighten screw	1	1	M6(0.75)×15
B29	7.02.16.035	Needle bar crank	1	1	
B30	7.02.15.398	Needle bar crank orientation screw	1	1	M6(0.75)×17.5
B31		Felt	1	1	
B32	7.02.15.399	Arm shaft bushing screw	1	1	M6×14
B33	7.02.04.024	Arm shaft bearing	2	2	6003
B34	7.02.08.095	Arm shaft bushing	1	1	
B35	7.02.07.059	Winder drive pulley	1	1	
B36	7.02.17.094	Replacement spring	1	1	
B37	7.02.09.032	Winder drive pulley collar	1	1	

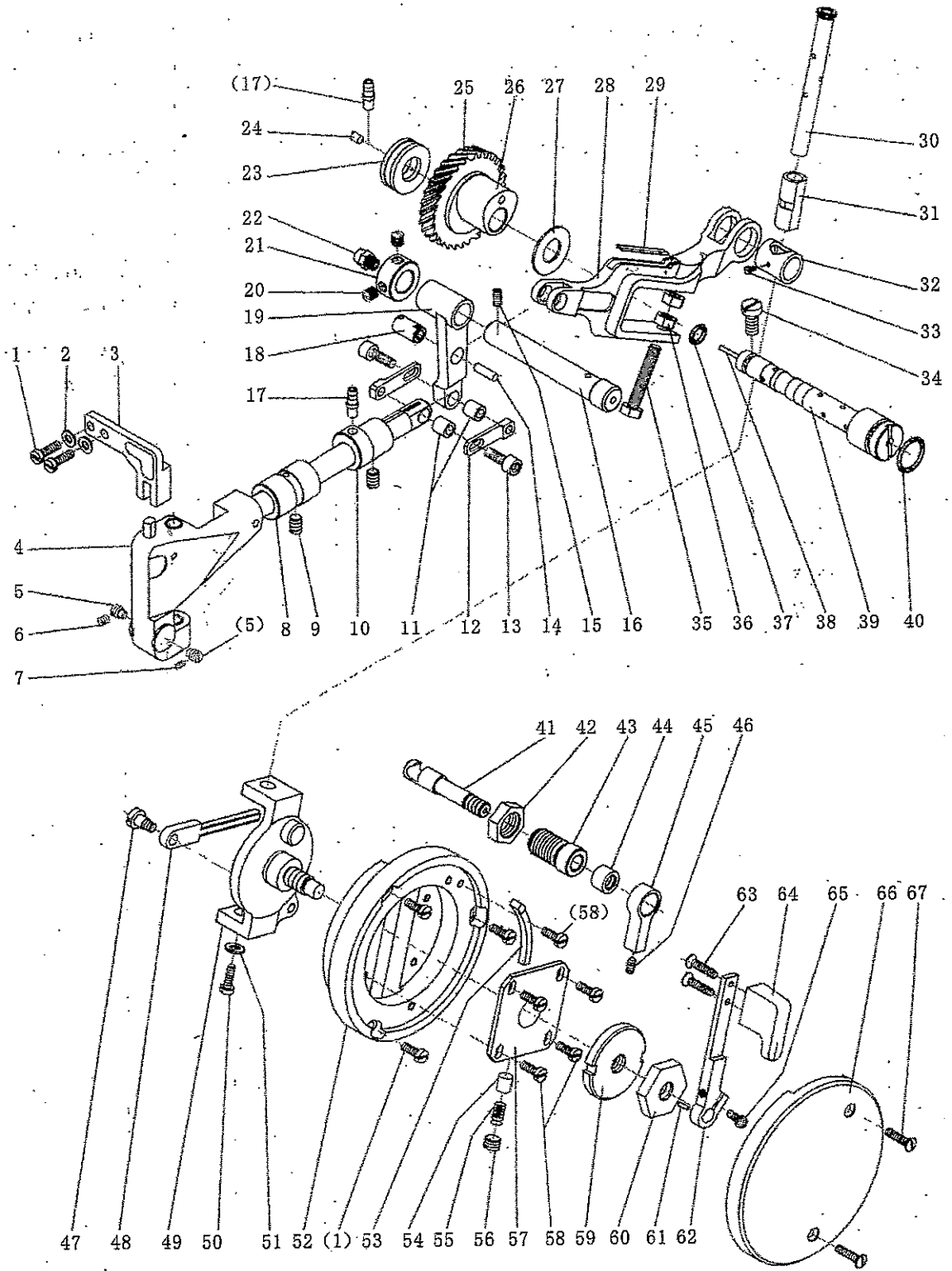
B. Arm shaft and needle bar thread take up parts



B、 Arm shaft and needle bar thread take up parts

No.	PartNo.	Name	Qty.		Remark
			82800	82800-D	
B38	7.02.15.407	Drive pulley orientation screw	1	1	M6(0.75)×7
B39	7.02.15.428	Collar screw	3	3	M6(0.75)×5
B40	7.02.08.102	Arm shaft bearing collar	1	1	
B41	7.02.07.051	Vibrating needle drive gear	1	1	
B42	7.02.15.126	Small gear screw	3	3	1/4(40)×7
B43	7.02.03.070	Arm shaft	1	1	
B44	7.02.07.053	Synchronous pulley (upper)	1	1	
B45	7.02.15.431	Synchronous pulley screw	2	2	M6(0.75)×10
B46	7.02.18.076	Elasticity stop ring	1	1	GB/T893.1-1986-62
B47	7.02.18.078	Elasticity stop ring	1	1	GB/T894.1-1986-30
B48	7.02.04.027	Arm shaft bearing(right)	1	1	6206
B49	7.02.07.054	Pulley	1	1	
B50	7.02.11.064	Pulley cover	1	1	
B51	7.02.15.432	Pulley cover screw	3	3	M3×8

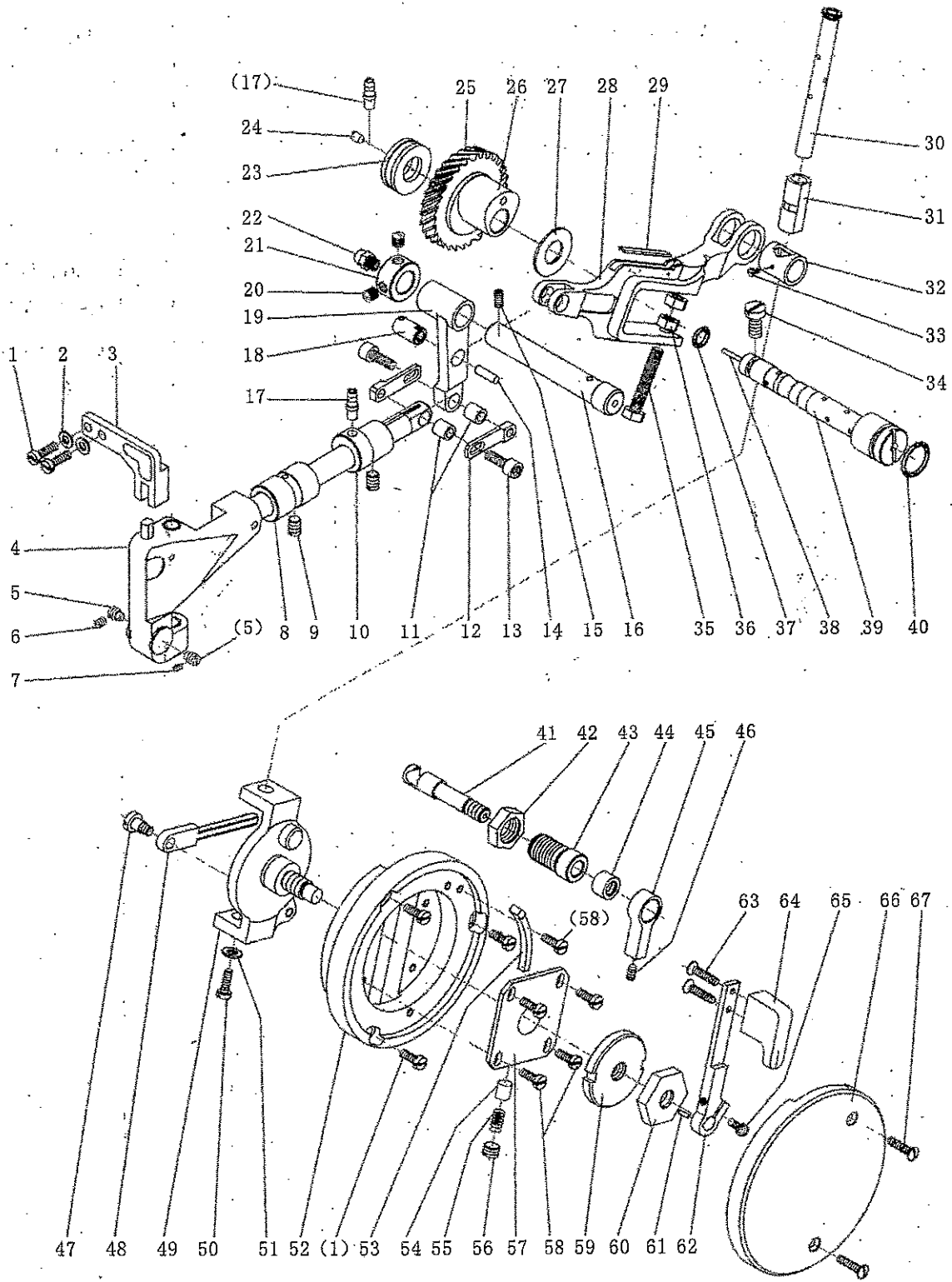
C、 Needle bar vibrating parts



C、 Needle bar vibrating parts

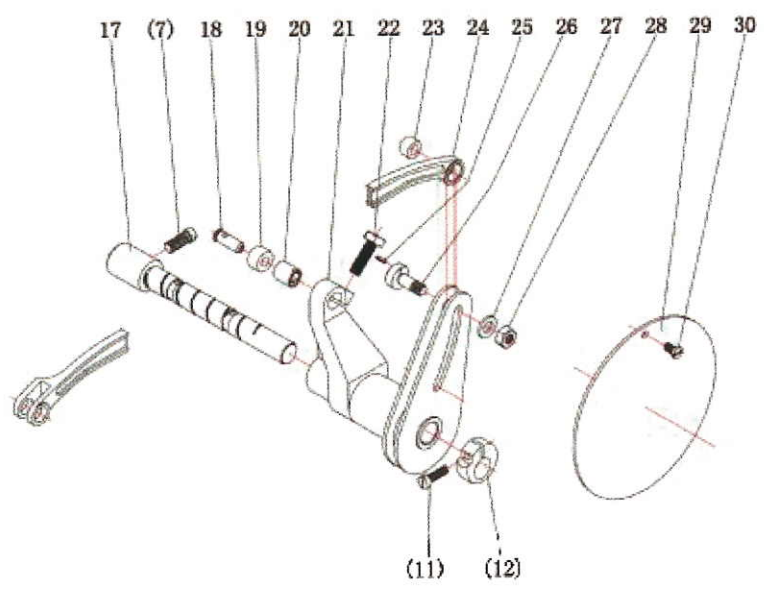
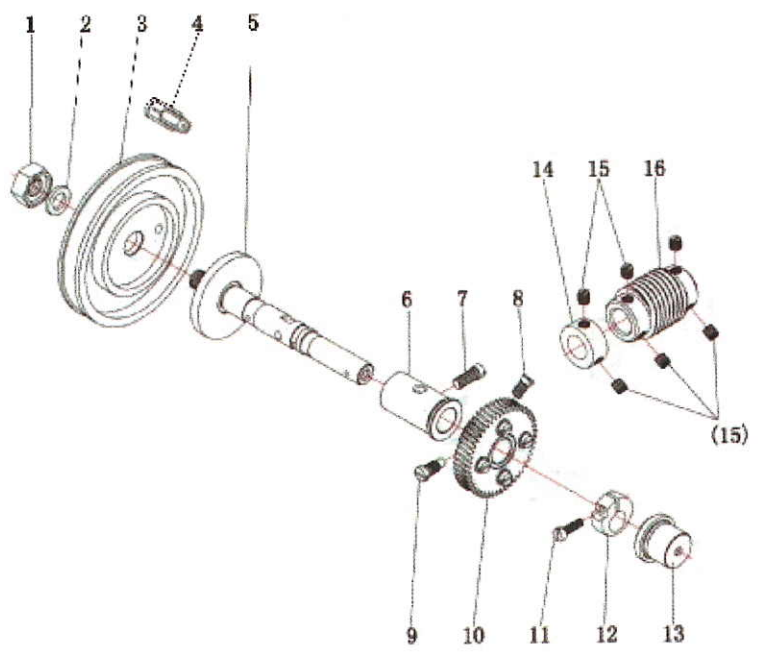
No.	PartNo.	Name	Qty.		Remark
			82800	82800-D	
C01	7.02.15.405	Fixed bracket screw	5	5	M4×14
C02	7.02.18.071	Washer	2	2	GB/T97.1 4
C03	7.02.13.043	Needle bar vibrating fixed bracket	1	1	
C04	7.02.01.039	Needle bar vibrating bracket	1	1	
C05	7.02.15.407	Needle bar vibrating bracket screw	2	2	M6(0.75)×7
C06	7.02.15.391	Tighten screw	1	1	M4×5
C07	7.02.15.406	Tighten screw	1	1	M3×4
C08	7.02.08.096	Needle bar vibrating shaft bushing (left)	1	1	
C09	7.02.15.410	Needle bar vibrating shaft bushing screw	2	2	M6×8
C10	7.02.08.097	Needle bar vibrating shaft bushing (right)	1	1	
C11	7.02.08.101	Connection bushing	2	2	
C12	7.02.17.091	Connection plate	2	2	
C13	7.02.15.443	Connection screw	2	2	M5(0.5)×14
C14		Felt	1	1	
C15	7.02.15.049	Needle feeding crank shaft tighten screw	1	1	M5×8
C16	7.02.03.075	Needle feeding crank shaft	1	1	
C17	7.02.16.059	Oil spile	2	2	
C18	7.02.10.093	Connection shaft	1	1	
C19	7.02.05.076	Link lever	1	1	
C20	7.02.15.428	Collar screw	2	2	M6(0.75)×5
C21	7.02.09.030	Needle feeding crank shaft collar	1	1	
C22	7.02.16.067	Coppery oil spile	1	1	
C23	7.02.04.026	Bearing	1	1	51101
C24	7.02.16.064	Aluminium oil plug	1	1	
C25	7.02.07.050	Vibrating needle driven gear	1	1	
C26	7.02.06.037	Vibrating needle cam	1	1	
C27	7.02.18.075	Coppery washer	1	1	
C28	7.02.05.077	Vibrating needle link lever	1	1	
C29		Felt	1	1	
C30	7.02.03.074	Vibrating range shaft	1	1	
C31	7.02.08.099	Vibrating bushing	1	1	
C32	7.02.08.100	Connection bushing	1	1	
C33	7.02.15.427	Connection bushing screw	1	1	M2×4
C34	7.02.15.426	Vibrating needle eccentric shaft screw	1	1	M6×12
C35	7.02.15.446	Vibrating needle link rod screw	1	1	M6(0.75)×34
C36	7.02.15.449	Vibrating needle link rod screw locking nut	2	2	M6(0.75)
C37	7.02.16.056	Vibrating needle eccentric shaft o-ring (small)	1	1	

C. Needle bar vibrating parts



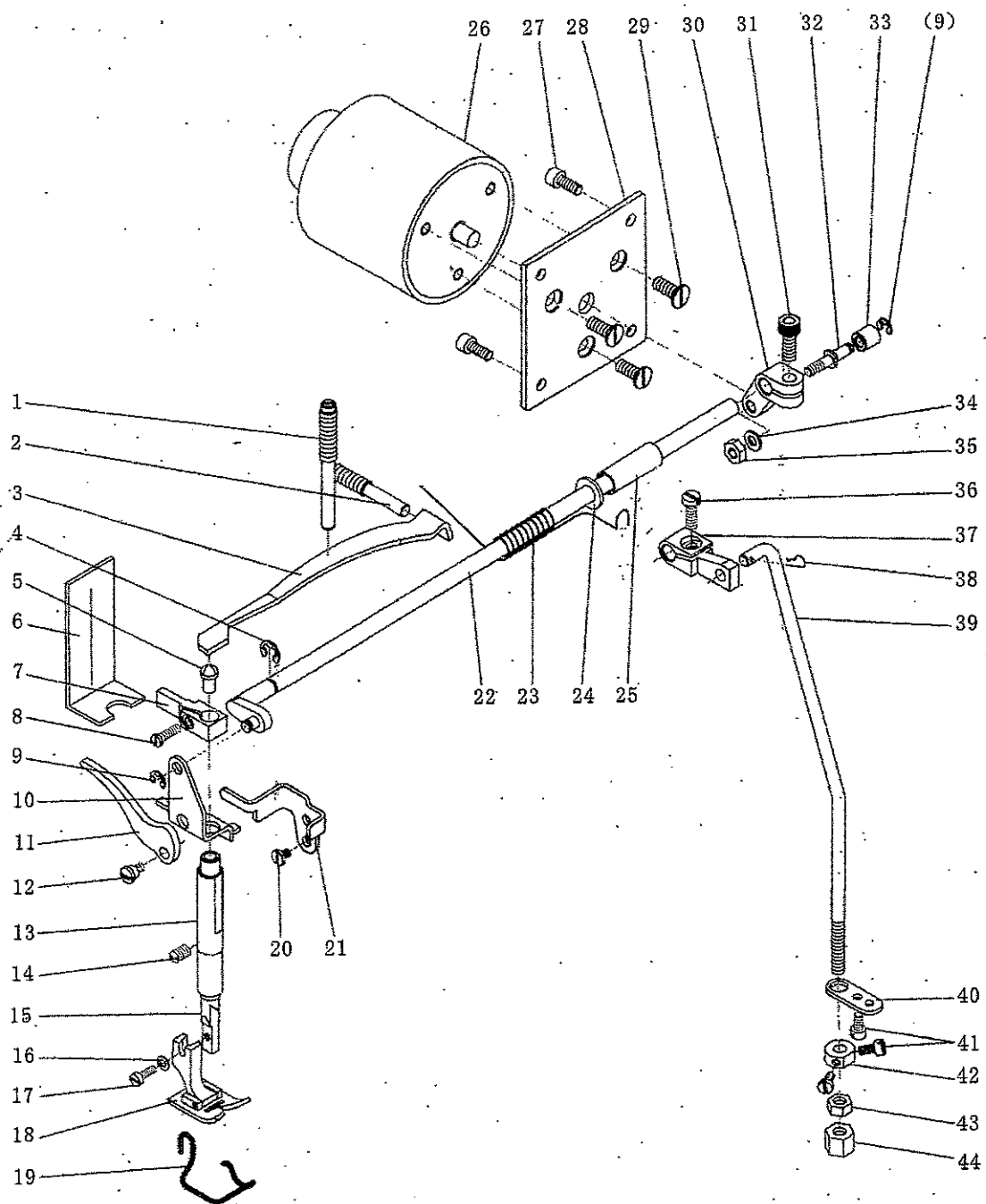
C、 Needle bar vibrating parts

No.	PartNo.	Name	Qty.		Remark
			82800	82800-D	
C38		Oil wick	1	1	Φ2×80mm
C39	7.02.10.094	Vibrating needle eccentric shaft	1	1	
C40	7.02.16.066	O-ring (big)	1	1	
C41	7.02.01.04102	Vibrating needle bracket connector	1	1	
C42	7.02.01.04103	Vibrating needle bracket nut	1	1	
C43	7.02.01.04104	Vibrating needle bracket holder	1	1	
C44	7.02.01.04105	Nut	1	1	
C45	7.02.01.04106	Vibrating needle locking spanner	1	1	
C46	7.02.01.04107	Vibrating needle locking spanner screw	1	1	
C47	7.02.15.425	Vibrating needle bracket link rod screw	1	1	
C48	7.02.01.04101	vibrating needle bracket link rod	1	1	
C49	7.02.13.044	Vibrating bracket	1	1	
C50	7.02.15.416	Vibrating range shaft screw	1	1	M5×12
C51	7.02.18.016	Vibrating range shaft screw washer	1	1	GB/T97.1 5
C52	7.02.13.045	Turntable	1	1	
C53	7.02.17.089	Vibrating needle spanner stop block	1	1	
C54	7.02.16.063	Plug	1	1	
C55	7.02.17.090	Plug spring	1	1	
C56	7.02.15.423	Plug spring screw	1	1	M8(0.75)×5
C57	7.02.12.046	Slide block	1	1	
C58	7.02.15.424	Slide block screw	5	5	M4×12
C59	7.02.15.451	Round nut	1	1	
C60	7.02.15.450	Hexagonal nut	1	1	
C61		Vibrating needle spanner orientation pin	1	1	
C62	7.02.05.071	Vibrating needle spanner	1	1	
C63	7.02.15.421	Vibrating needle spanner handel screw	2	2	
C64	7.02.05.070	Vibrating needle spanner handle	1	1	
C65	7.02.15.417	Vibrating needle spanner screw	1	1	M4×12
C66	7.02.16.062	Scale	1	1	
C67	7.02.15.422	Scale screw	2	2	M4×18



No.	Part No.	Name	Qty	Remark
01	7.02.15.382	Hexagonal nut	1	M10
02	7.02.17.113	Spring washer	1	
03	7.02.06.060	Cam	1	
04	7.02.16.077	Seal cover	1	
05	7.02.10.133	Worm wheel shaft	1	
06	7.02.08.094	Worm wheel shaft bushing (back)	1	
07	7.02.15.399	Screw	2	M6×14
08	7.02.15.384	Screw	1	M6(0.75)
09	7.02.15.431	Screw	1	M6(0.75)×10
10	7.02.07.069	Worm wheel	1	
11	7.02.15.405	Screw	2	M4×14
12	7.02.09.033	Retaining ring	2	
13	7.02.08.117	Worm wheel shaft bushing	1	
14	7.02.09.034	Retaining ring	1	
15	7.02.15.428	Screw	6	M6(0.75)×5
16	7.02.07.070	Worm bolt	1	
17	7.02.10.131	Vibrating needle shaft	1	
18	7.02.10.132	Pin roller shaft	1	
19	7.02.12.080	Pin roller	1	
20	7.02.08.093	Pin roller shaft eccentric bushing	1	
21	7.02.01.037	Vibrating needle crank assy.	1	
22	7.02.15.380	Screw	1	M6×18
23	7.02.08.092	Vibrating link bushing	1	
24	7.02.05.103	Link	1	
25	7.02.10.130	Elastic round pin	1	Φ2
26	7.02.15.381	Screw pin	1	M6
27	7.02.18.046	Washer	1	
28	7.02.15.067	Nut	1	GB/T 6170 M6
29	7.02.11.146	Cover plate	1	
30	7.02.15.420	Screw	1	M4×6

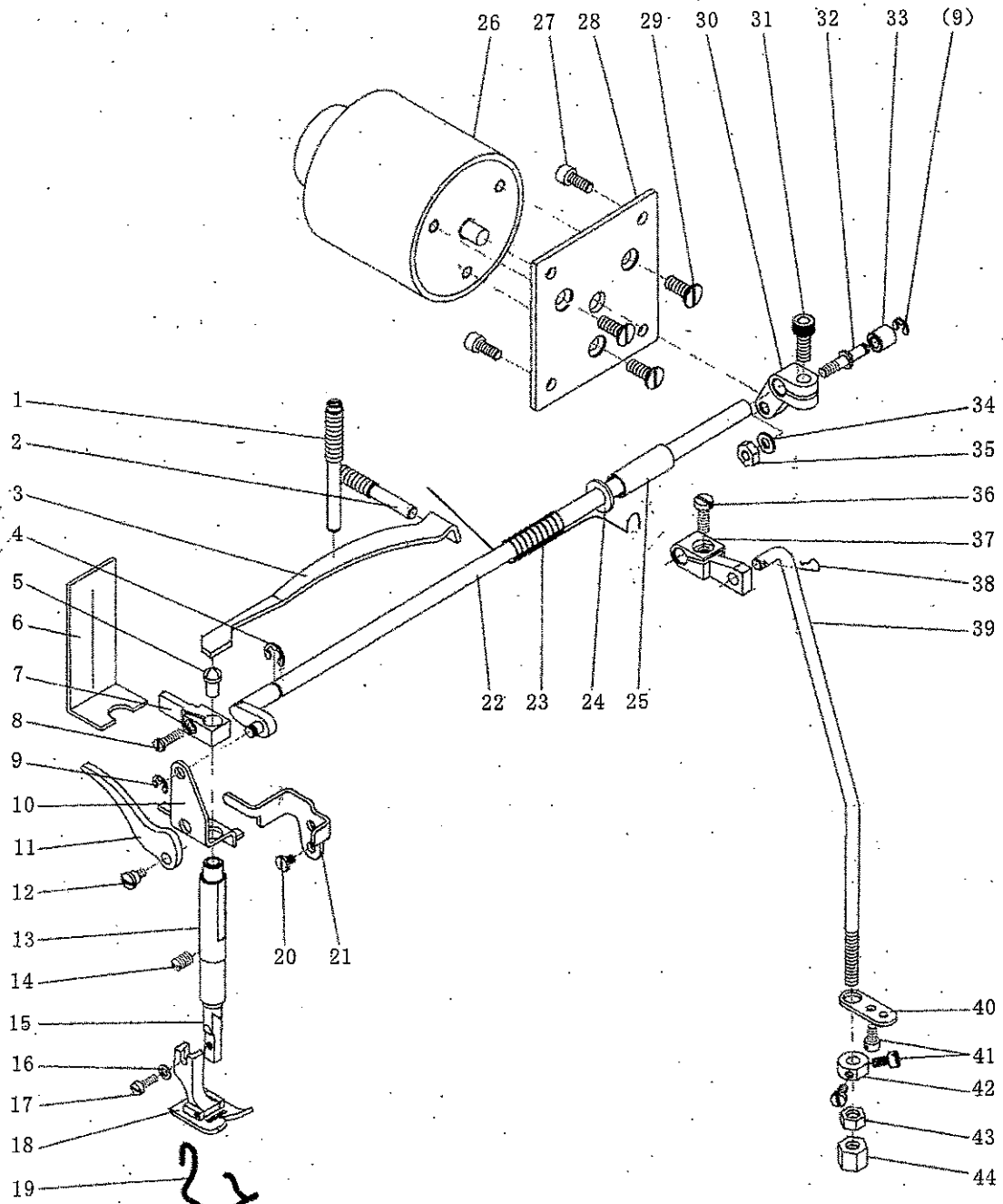
D、Presser foot parts



D、Presser foot parts

No.	PartNo.	Name	Qty.		Remark
			82800	82800-D	
D01	7.02.15.414	Presser foot pressure adjustive screw	1	1	
D02	7.02.15.415	Presser bar spring support screw	1	1	
D03	7.02.17.085	Presser bar spring	1	1	
D04	7.02.18.072	E-ring	1	1	GB/T896-1986-6
D05	7.02.10.092	Presser bar pin	1	1	
D06		Felt	1	1	
D07	7.02.12.045	Presser bar slide block	1	1	
D08	7.02.15.417	Presser bar slide block screw	1	1	M4×12
D09	7.02.18.031	E-ring	1	2	GB/T896-1986-4
D10	7.02.17.087	Presser foot lifting connection plate	1	1	
D11	7.02.05.068	Presser bar spanner	1	1	
D12	7.02.15.418	Presser bar spanner screw	1	1	
D13	7.02.08.098	Presser bar bushing	1	1	
D14	7.02.15.411	Presser bar bushing tighten screw	1	1	M6(0.75)×8
D15	7.02.03.072	Presser bar	1	1	
D16	7.02.18.057	Presser foot screw washer	1	1	
D17	7.02.15.419	Presser foot screw	1	1	M3.5×10
D18	7.02.02.089	Presser foot	1	1	
D19	7.02.17.088	Spring	1	1	
D20	7.02.15.394	Release lever screw	1	1	
D21	7.02.05.063	Release lever	1	1	
D22	7.02.03.073	Presser foot lifting shaft	1	1	
D23	7.02.17.086	Replacement spring	1	1	
D24	7.02.18.060	Washer		1	GB/T97.1 8
D25	7.02.08.040	Presser foot lifting shaft bushing		1	
D26	7.02.19.035	presser foot Lifting electromagnetic		1	
D27	7.02.15.053	Fixed plate screw		4	M5×12
D28	7.02.11.095	Lifting presser foot electromagnetic fixed plate		1	
D29	7.02.15.105	Lifting presser foot electromagnetic screw		3	M6×8
D30	7.02.06.081	Presser foot lifting crank		1	
D31	7.02.15.048	Presser foot lifting crank screw		1	M6×15
D32	7.02.10.146	Presser foot lifting crank pin		1	
D33	7.02.12.081	Slide pole		1	
D34	7.02.18.016	Washer		1	GB/T97.1 5
D35	7.02.15.068	Presser foot lifting crank pin nut		1	GB/T 6170 M5
D36	7.02.15.416	Knee lifting crank screw	1		M5×12
D37	7.02.05.069	Knee lifting crank	1		

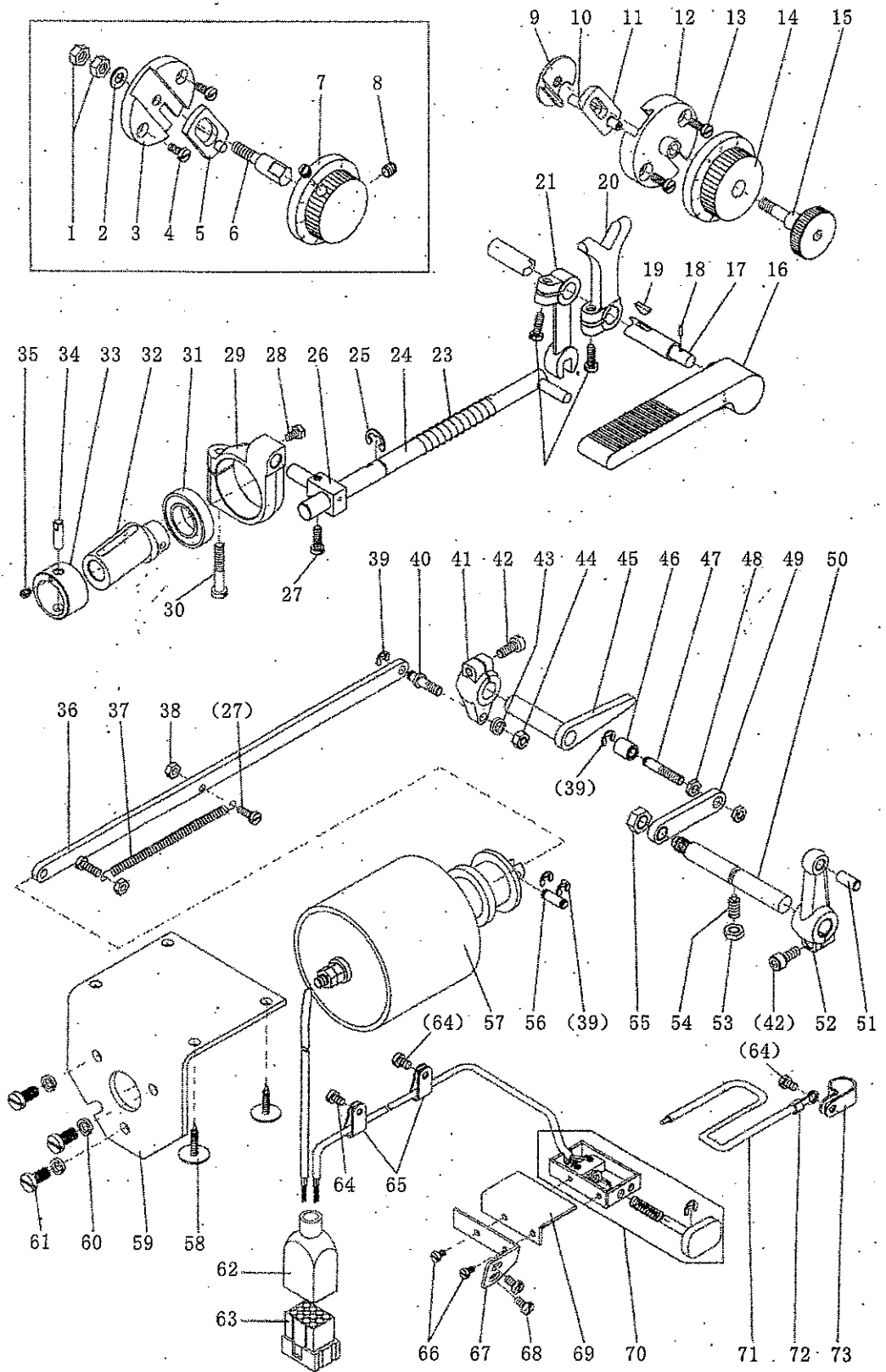
D、Presser foot parts



D、Presser foot parts

No.	PartNo.	Name	Qty.		Remark
			82800	82800-D	
D38	7.02.17.041	Pin	1		
D39	7.02.01.04001	Presser foot lifting link lever	1		
D40	7.02.01.04002	Link lever fixed plate	3		M4×6
D41	7.02.15.420	Link lever fixed plate screw	1		
D42	7.02.01.04003	Link lever collar	1		
D43	7.02.01.04004	Nut	1		
D44	7.02.01.04005	Knee lifting connection nut	1		

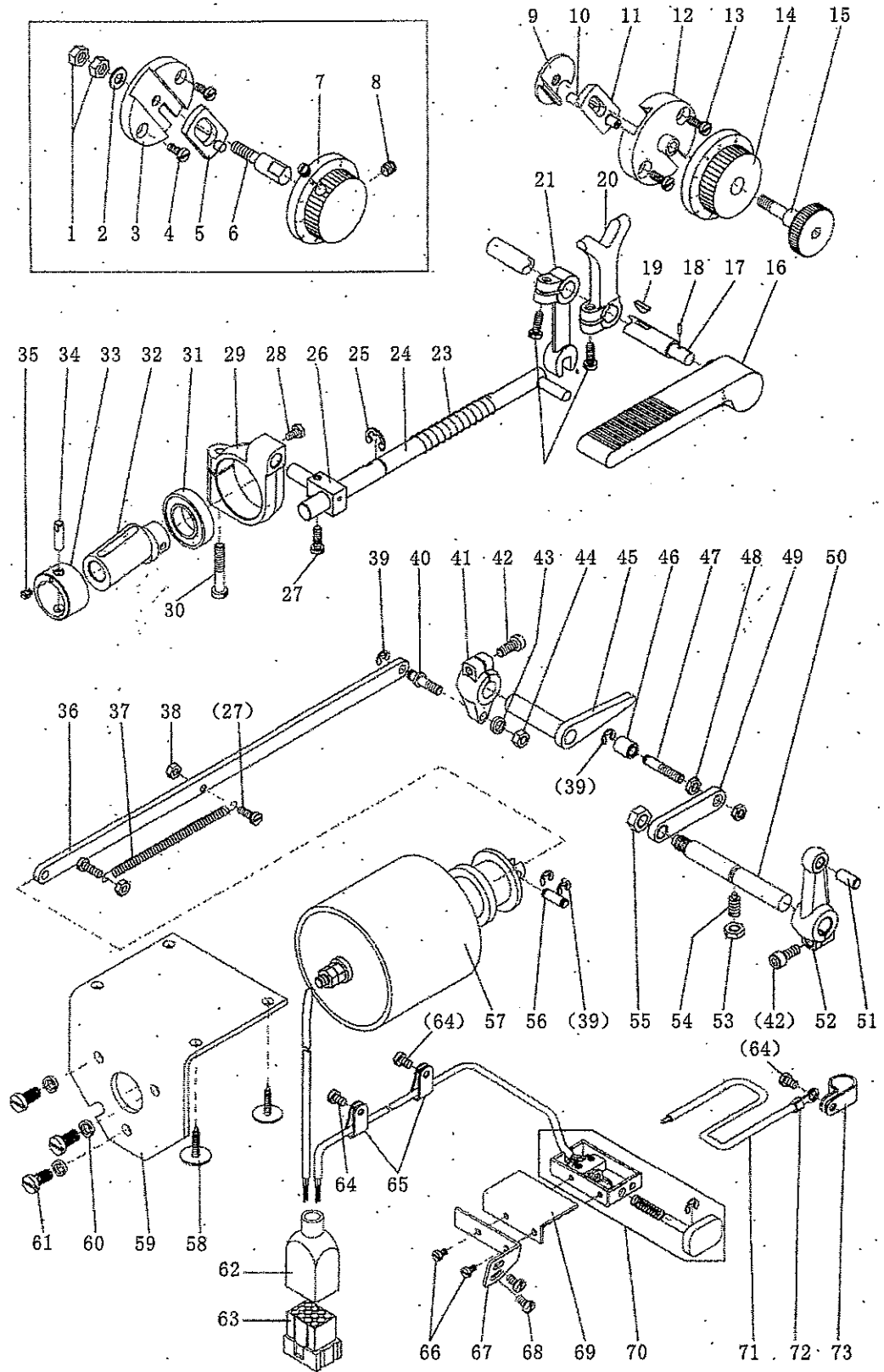
E、 Stitch length adjustment and backstitch parts



E、Stitch length adjustment and backstitch parts

No.	PartNo.	Name	Qty.		Remark
			82800	82800-D	
E01	7.02.12.047.01	Stitch length indication holder nut	2		
E02	7.02.12.047.02	Washer	1		
E03	7.02.12.047.03	Stitch length indication holder	1		
E04	7.02.15.006	Stitch length indication holder screw	2		M4×8
E05	7.02.12.048	Stitch length adjustive block	1		
E06	7.02.12.047.04	Stitch length indication holder shaft	1		
E07	7.02.16.068	Stitch length indication dial	1		
E08	7.02.15.428	Stitch length indication dial screw	2		M6(0.75)×5
E09	7.02.12.135	Stitch length adjustive tighten block		1	
E10	7.02.05.217	Stitch length adjustive lever		1	
E11	7.02.13.185	Stitch length adjustive block		1	
E12	7.02.13.186	Stitch length indication holder		1	
E13	7.02.15.017	Stitch length indication holder screw		2	M4×10
E14	7.02.16.212	Stitch length indication dial		1	
E15	7.02.05.216	Stitch length dial locking screw		1	
E16	7.02.05.079	Backstitch control lever spanner	1	1	
E17	7.02.03.077	Backstitch control lever	1	1	
E18		Pin	1	1	
E19	7.02.12.049	Backstitch stop lever block	1	1	
E20	7.02.05.078	Stitch length adjustive crank	1	1	
E21	7.02.05.080	Backstitch control lever crank	1	1	
E22	7.02.15.416	Backstitch control lever crank screw	2	2	M5×12
E23	7.02.17.092	Replacement spring	1	1	
E24	7.02.03.076	Backstitch connection shaft	1	1	
E25	7.02.18.021	E-ring	1	1	GB/T896-1986-7
E26	7.02.12.050	Backstitch block	1	1	
E27	7.02.15.424	Backstitch block screw	1	3	M4×12
E28	7.02.15.447	Backstitch block tighten screw	1	1	M4×6
E29	7.02.06.039	Backstitch cam crank	1	1	
E30	7.02.15.436	Backstitch cam crank screw	1	1	M5×30
E31	7.02.04.024	Backstitch cam crank bearing	1	1	6003
E32	7.02.01.04201	Feed backstitch cam	1	1	
E33	7.02.01.04202	Feed backstitch cam bushing	1	1	
E34	7.02.01.04203	Orientation pin	1	1	
E35	7.02.01.04204	Orientation pin screw	1	1	
E36	7.02.05.175	Backstitch link lever		1	
E37	7.02.17.033	Backstitch link lever replacement spring		1	

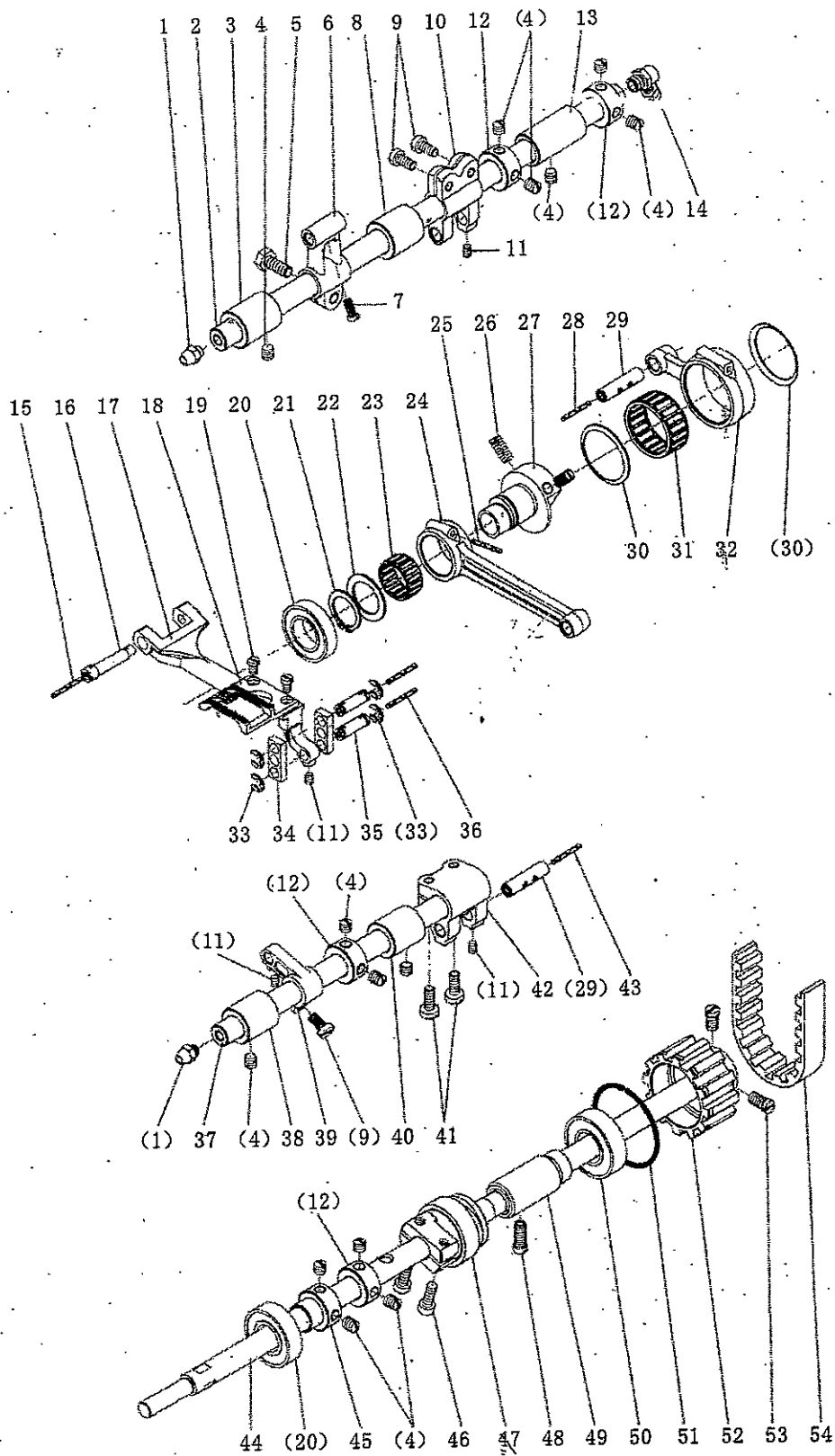
E、 Stitch length adjustment and backstitch parts



E、Stitch length adjustment and backstitch parts

No.	PartNo.	Name	Qty.		Remark
			82800	82800-D	
E38	7.02.15.268	Replacement spring nut	2		GB/T 6170 M4
E39	7.02.18.031	E-ring	4		GB/T896-1986-4
E40	7.02.10.149	Backstitch link lever crank pin	1		
E41	7.02.06.083	Backstitch link lever crank	1		
E42	7.02.15.053	Backstitch link lever crank screw	2		M5×12
E43	7.02.18.055	Spring washer	1		GB/T93. 5
E44	7.02.15.068	Backstitch link lever crank pin nut	1		GB/T6170 M5
E45	7.02.21.176	Knee lifting Lever assy,	1		
E46	7.02.07.071	Foot control shaft link lever screw roller	1		
E47	7.02.15.107	Foot control shaft link lever screw	1		
E48	7.02.15.108	Foot control shaft link lever nut	2		GB/T6172 M5
E49	7.02.05.176	Foot control shaft link lever	1		
E50	7.02.03.112	Foot control backstitch shaft	1		
E51	7.02.10.148	Foot control backstitch crank pin	1		
E52	7.02.21.173	Foot control backstitch crank	1		
E53	7.02.15.089	Stop screw/nut	1		GB/T6172 M6
E54	7.02.15.088	Stop screw	1		M6×12
E55	7.02.15.106	Foot control shaft nut	1		M8 (左)
E56	7.02.10.147	Backstitch electromagnetic pin	1		
E57	7.02.19.036	Backstitch electromagnetic	1		
E58	7.02.21.033	Backstitch electromagnetic fixed plate screw	4		GB/T99 4.5×20
E59	7.02.11.104	Backstitch electromagnetic fixed plate	1		
E60	7.02.18.058	Spring washer	3		GB/T93. 6
E61	7.02.15.007	Backstitch electromagnetic screw	3		M6×10
E62	7.02.19.030	Jacket	1		
E63	7.02.19.027	Socket	1		
E64	7.02.15.420	Wire clip screw	3		M4×6
E65	7.02.16.166	Nylon clip AB-3N	2		
E66	7.02.15.101	Switch box fixed bracket screw	2		M3×4
E67	7.02.13.072	Switch box fixed bracket	1		
E68	7.02.15.005	Switch box screw	2		M4×8
E69	7.02.11.079	Switch box cover plate	1		
E70	7.02.01.059	Backstitch switch assy.	1		
E71	7.02.19.113	Earthing wire	1		
E72	7.02.19.104	Earthing plug	1		
E73	7.02.16.167	Nylon clip AB-8N	1		

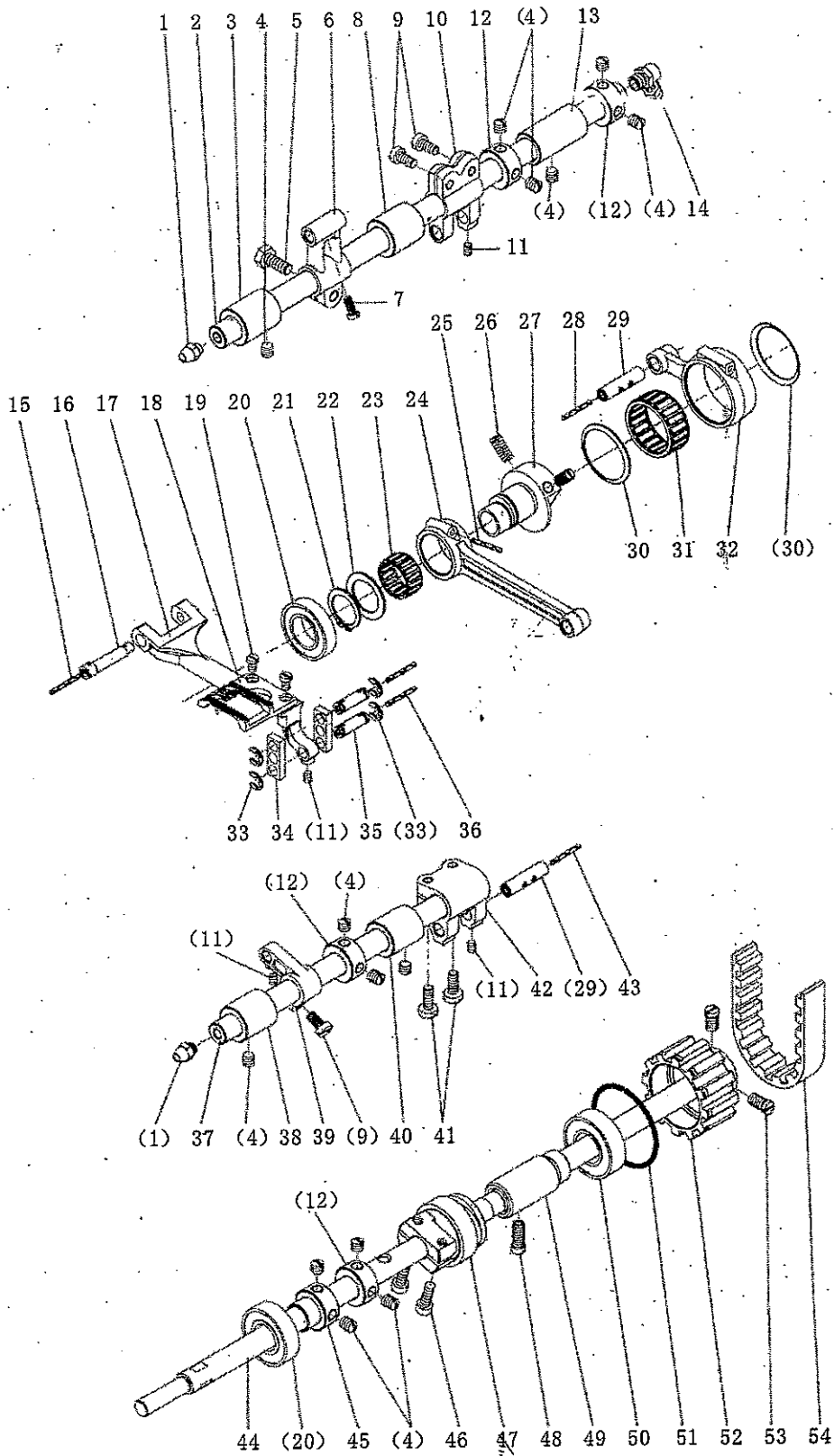
F. Lower shaft, feed dog parts



F、 Lower shaft, feed dog parts

No.	PartNo.	Name	Qty.		Remark
			82800	82800-D	
F01	7.02.16.067	Oil spile	2	2	
F02	7.02.03.079	Feed shaft	1	1	
F03	7.02.08.103	Feed shaft bushing (left)	1	1	
F04	7.02.15.428	Bushing screw	12	14	M6(0.75)×5
F05	7.02.15.448	Feed crank (left) screw	1	1	M6×14
F06	7.02.05.081	Feed crank (left)	1	1	
F07	7.02.15.408	Feed dog holder adjustive pin screw	1	1	M4×8
F08	7.02.08.104	Feed shaft bushing (middle)	1	1	
F09	7.02.15.430	Feed crank (right) screw	3	3	M5×10
F10	7.02.06.038	Feed crank (right)	1	1	
F11	7.02.15.391	Feed crank pin screw	4	4	M4×5
F12	7.02.09.030	Collar	3	4	
F13	7.02.08.105	Feed shaft bushing (right)	1	1	
F14	7.02.16.072	Oil spile (big)	1	1	
F15		Feed dog holder adjustive pin oil wick	2	2	Φ2×160mm
F16	7.02.10.097	Feed dog holder adjustive pin	1	1	
F17	7.02.02.090	Feed dog holder	1	1	
F18	7.02.02.087	Feed dog	1	1	
F19	7.02.15.433	Feed dog screw	2	2	M4×6
F20	7.02.04.028	Lifting feed dog cam bearing	2	2	6002
F21	7.02.18.079	Elasticity stop ring	1	1	GB/T894.1-1986-18
F22	7.02.18.080	Washer	1	1	
F23	7.02.04.030	Lifting feed dog cam link lever bearing	1	1	
F24	7.02.05.082	Lifting feed dog cam link lever	1	1	
F25		Lifting feed dog cam link lever oil wick	1	1	Φ2×350mm
F26	7.02.15.050	Lifting feed dog cam screw	2	2	M6(0.75)×8
F27	7.02.07.055	Lifting feed dog cam	1	1	
F28		Backstitch cam link lever oil wick	1	1	Φ2×200mm
F29	7.02.10.096	Feed crank pin	2	2	
F30	7.02.13.082	Gear washer	2	2	
F31	7.02.04.029	Backstitch cam link lever bearing	1	1	
F32	7.02.05.083	Backstitch cam link lever	1	1	
F33	7.02.18.031	E-ring	4	4	GB/T896-1986-4
F34	7.02.11.065	Connection plate	2	2	
F35	7.02.10.095	Lifting feed dog link lever pin	2	2	
F36		Lifting feed dog link lever pin oil wick	1	1	Φ2×60mm
F37	7.02.03.080	Lifting feed dog shaft	1	1	

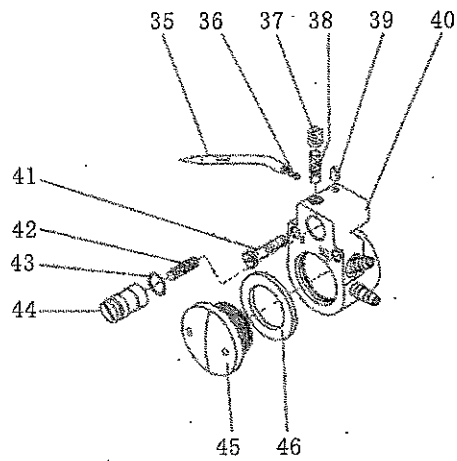
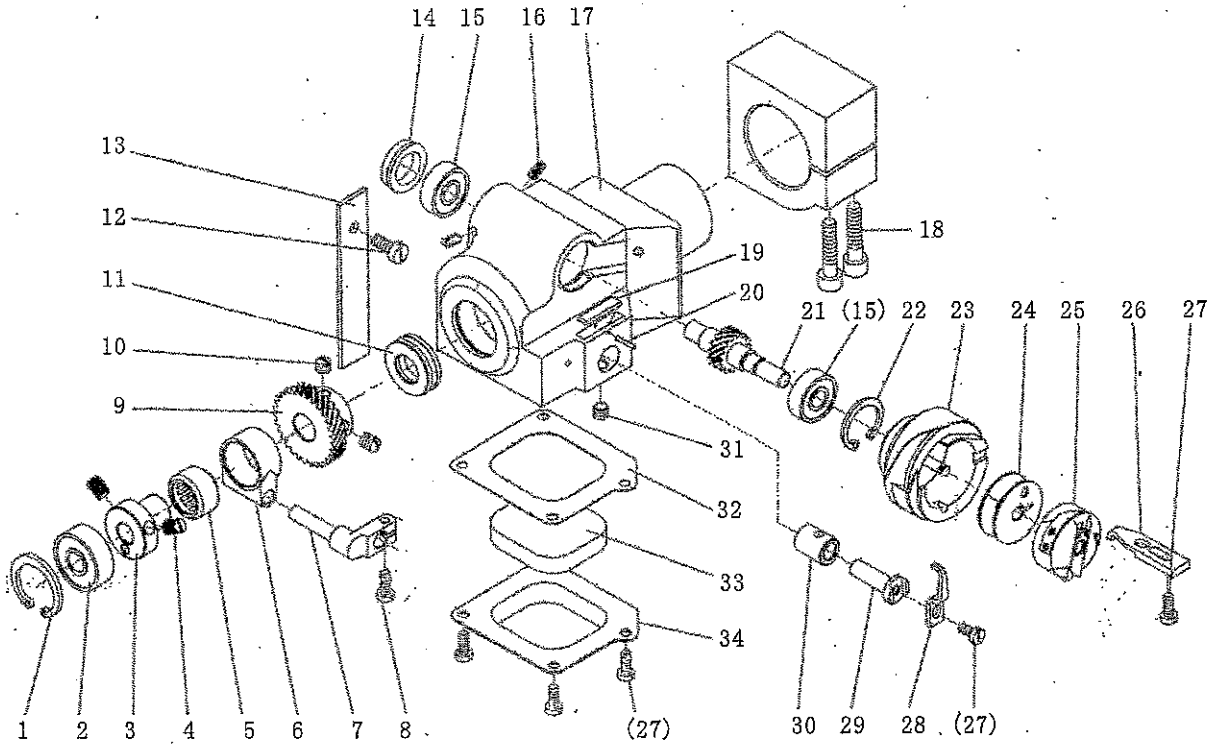
F. Lower shaft, feed dog parts



F、 Lower shaft, feed dog parts

No.	PartNo.	Name	Qty.		Remark
			82800	82800-D	
F38	7.02.08.108	Lifting feed dog shaft bushing (left)	1	1	
F39	7.02.05.084	Lifting feed dog crank (left)	1	1	
F40	7.02.18.109	Lifting feed dog shaft bushing (right)	1	1	
F41	7.02.15.389	Lifting feed dog crank (right) screw	2	2	M5×14
F42	7.02.06.040	Lifting feed dog crank (right)	1	1	
F43		Lifting feed dog crank pin oil wick	1	1	Φ2×30mm
F44	7.02.03.078	Lower shaft	1	1	
F45	7.02.08.107	Lower shaft bearing bushing	1	1	
F46	7.02.15.058	Thread trimming cam screw		2	M5×16
F47	7.02.06.080	Thread trimming cam		1	
F48	7.02.15.437	Lower shaft bearing bushing screw	1	1	M6(0.75)×14
F49	7.02.08.106	Lower shaft bearing bushing	1	1	
F50	7.02.04.024	Lower shaft bearing	1	1	6003
F51	7.02.18.081	Synchronous pulley (lower) washer	1	1	
F52	7.02.07.056	Synchronous pulley (lower)	1	1	
F53	7.02.15.431	Synchronous pulley screw	2	2	M6(0.75)×10
F54	7.02.07.052	Synchronous belt	1	1	

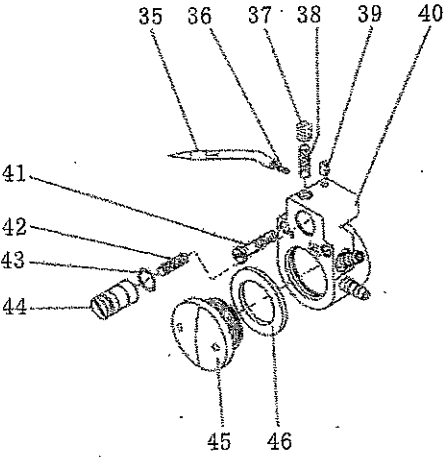
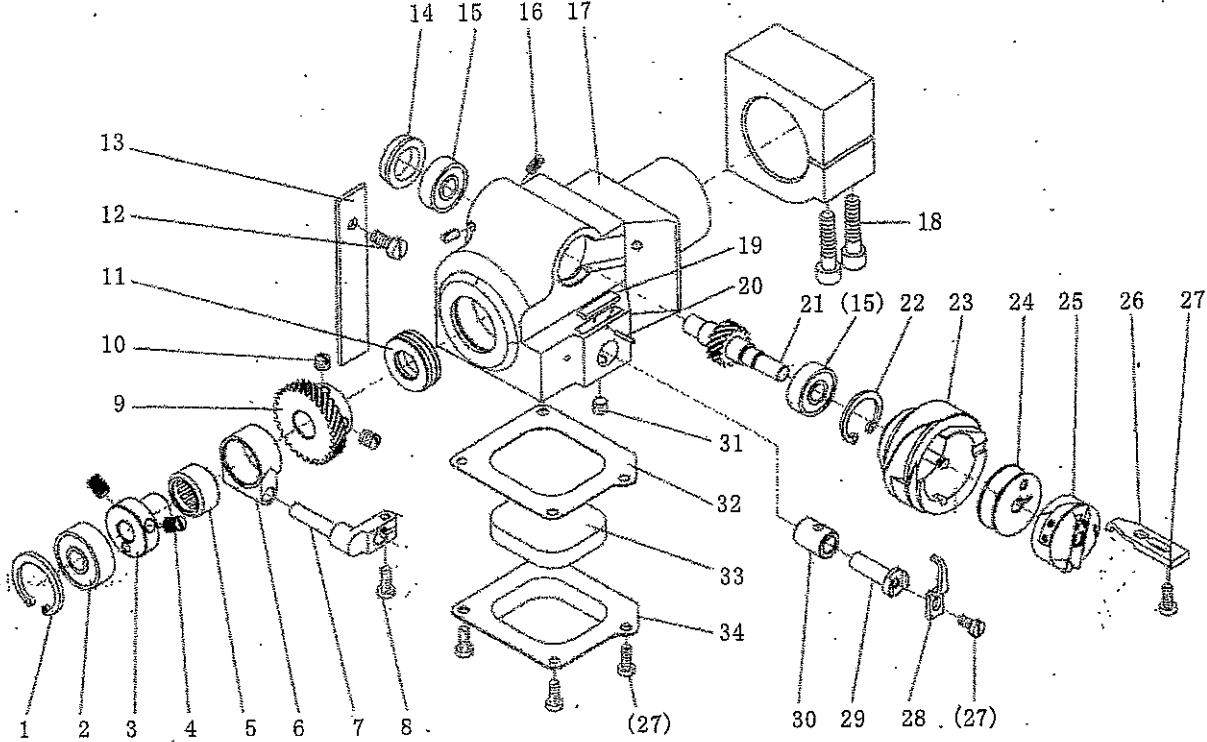
G、 Hook assembly



G、Hook assembly

No.	PartNo.	Name	Qty.		Remark
			82800	82800-D	
G01	7.02.18.083	Elasticity stop ring	1	1	GB/T893.1-1986- 26
G02	7.02.04.031	Bearing	1	1	6292
G03	7.02.06.041	Opener cam	1	1	
G04	7.02.15.434	Opener cam screw	2	2	M6(0.75)×7
G05	7.02.04.033	Opener cam bearing	1	1	HK1412
G06	7.02.08.112	Opener cam bushing	1	1	
G07	7.02.08.111	Hook opener	1	1	
G08	7.02.15.017	Hook opener screw	1	1	M4×10
G09	7.02.07.058	Hook drive gear	1	1	
G10	7.02.15.126	Drive gear screw	2	2	1/4(40)×7
G11	7.02.04.026	Bearing	1	1	51101
G12	7.02.15.439	Felt fixed screw	1	1	M5×8
G13		Felt	1	1	
G14	7.02.09.031	Hook saddle bearing cover	1	1	
G15	7.02.04.032	Bearing	2	2	608
G16	7.02.15.438	Bearing cover screw	2	2	M4(0.5)×7
G17	7.02.13.046	Hook saddle	1	1	
G18	7.02.15.445	Hook saddle fixed screw	2	2	M6×25
G19		Felt	1	1	
G20	7.02.10.098	Elasticity pin	1	1	
G21	7.02.07.057	Hook gear	1	1	
G22	7.02.18.027	Elasticity stop ring	1	1	GB/T893.1-1986- 22
G23	7.02.02.092	Hook	1	1	
G24	7.02.21.144	Bobbin	1	1	
G25		Bobbin case	1	1	
G26	7.02.02.094	Hook orientation claw	1	1	
G27	7.02.15.006	Hook orientation claw screw	5	5	M4×8
G28	7.02.02.091	Hook thread distributing claw	1	1	
G29	7.02.10.099	Hook thread distributing bracket	1	1	
G30	7.02.08.110	Hook thread distributing bracket bushing	1	1	
G31	7.02.15.440	Bushing tighten screw	1	1	M6(0.75)×3.5
G32	7.02.18.084	Hook saddle bottom cover washer	1	1	
G33		Felt	1	1	
G34	7.02.13.047	Hook saddle bottom cover	1	1	
G35	7.02.16.075	Hook coppery oil tube	1	1	
G36		Hook oil wick	1	1	
G37	7.02.15.441	Oil seal screw	1	1	M6×5

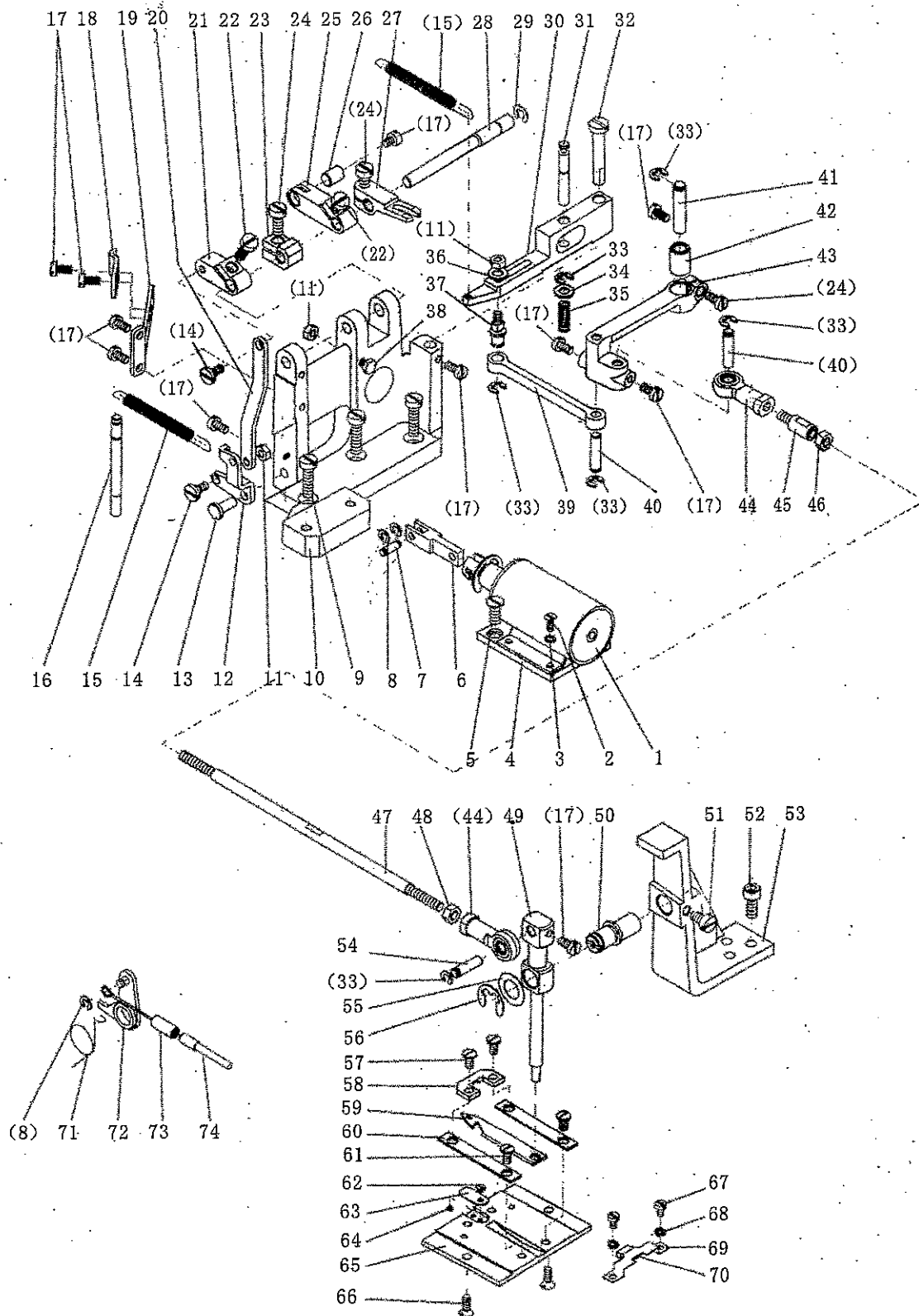
G、 Hook assembly



G、 Hook assembly

No.	PartNo.	Name	Qty.		Remark
			82800	82800-D	
G38		Oil box felt	1	1	
G39	7.02.15.406	Coppery oil tube tighten screw	1	1	M3×4
G40	7.02.13.048	Hook saddle oil box	1	1	
G41	7.02.15.442	Oil box screw	1	1	M4×25
G42		Oil quantity adjustive valve felt	1	1	
G43		Oil quantity adjustive valve o-ring	1	1	
G44		Oil quantity adjustive valve	1	1	
G45	7.02.16.069	Oil window cover	1	1	
G46	7.02.16.071	Oil window cover washer	1	1	

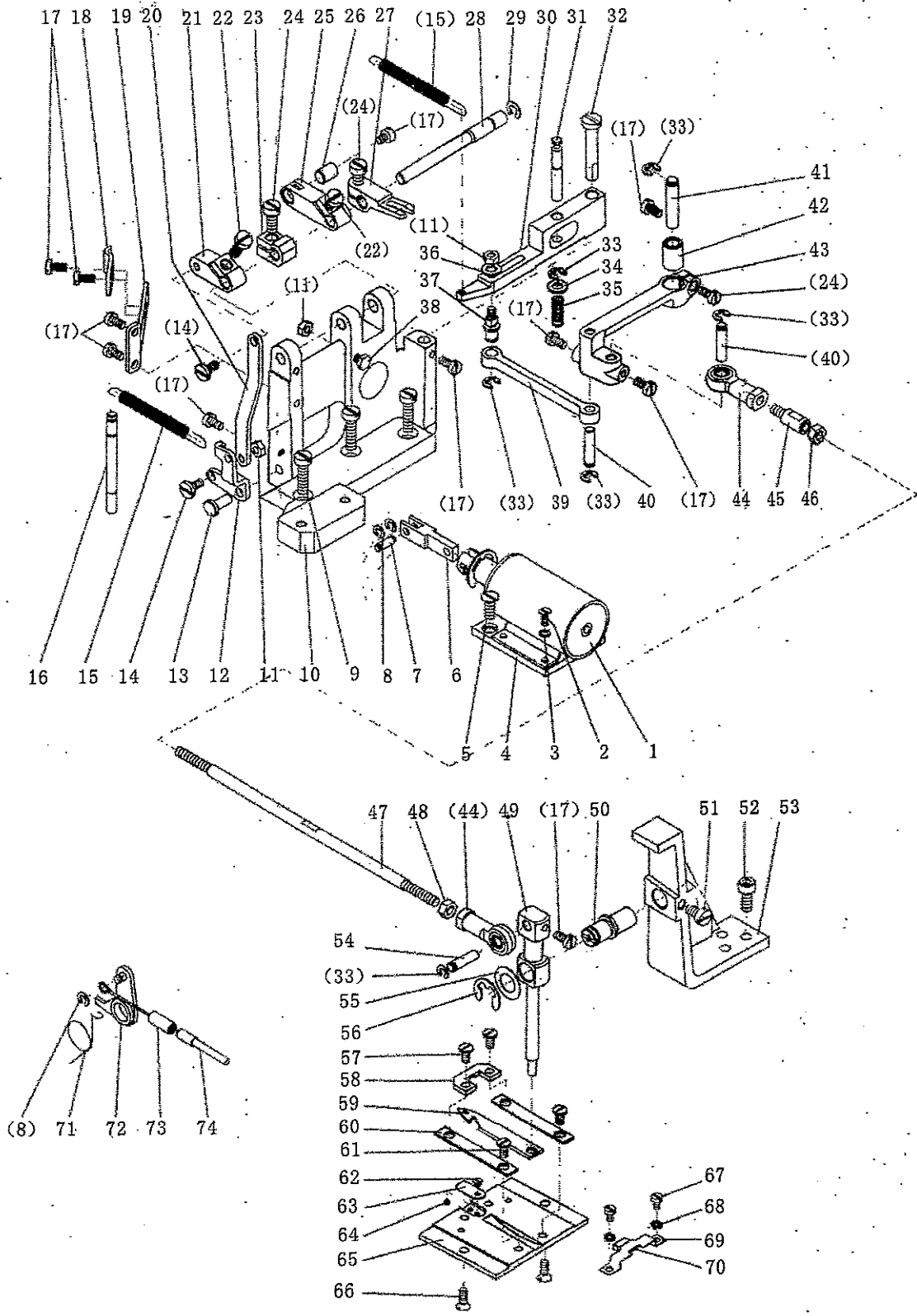
H. Thread trimming parts



H、Thread trimming parts

No.	PartNo.	Name	Qty.		Remark
			82800	82800-D	
H01	7.02.19.032	Thread trimming electromagnetic		1	
H02	7.02.15.037	Thread trimming electromagnetic screw		4	M3×6
H03	7.02.18.123	Thread trimming electromagnetic screw washer		4	GB/T97.1 3
H04	7.02.17.125	Thread trimming electromagnetic fixed plate		1	
H05	7.02.15.032	Thread trimming electromagnetic fixed plate screw		2	M4×8
H06	7.02.05.163	Thread trimming electromagnetic link lever		1	
H07	7.02.10.136	Thread trimming electromagnetic link lever pin		1	
H08	7.02.18.024	E-ring		3	GB/T896-1986-3
H09	7.02.15.096	Thread trimming parts setting bracket screw		3	M5×16
H10	7.02.13.073	Thread trimming parts setting bracket		1	
H11	7.02.15.268	Crank connection screw/nut		3	GB/T6170 M4
H12	7.02.06.075	Link lever crank (upper)		1	
H13	7.02.10.137	Link lever crank pin		1	
H14	7.02.15.097	Crank connection screw		2	M4×6.5
H15	7.02.17.018	Replacement spring		2	
H16	7.02.10.144	Replacement spring pin		1	
H17	7.02.15.006	Link lever crank pin screw		11	M4×8
H18	7.02.11.101	Release soft-shaft fixed press plate		1	
H19	7.02.11.100	Release soft-shaft fixed plate		1	
H20	7.02.05.172	Link lever		1	
H21	7.02.06.076	Link lever crank (lower)		1	
H22	7.02.15.416	Link lever crank (lower) screw		2	M5×12
H23	7.02.12.073	Stopper block		1	
H24	7.02.15.430	Stopper block screw		3	M5×10
H25	7.02.06.077	Release crank		1	
H26	7.02.16.122	Release soft-shaft connection		1	
H27	7.02.06.078	Thread trimming drive crank		1	
H28	7.02.03.111	Thread trimming crank shaft		1	
H29	7.02.18.039	E-ring		1	GB/T896-1986-5
H30	7.02.06.079	Thread trimming vibrating crank		1	
H31	7.02.10.139	Thread trimming drive crank pin		1	
H32	7.02.10.138	Thread trimming vibrating crank pin		1	
H33	7.02.18.031	E-ring		6	GB/T896-1986-4
H34	7.02.18.016	Washer		1	GB/T97.1 5
H35	7.02.17.019	Replacement spring		1	
H36	7.02.18.071	Washer		1	GB/T97.1 4
H37	7.02.15.099	Thread trimming link lever adjustive screw		1	

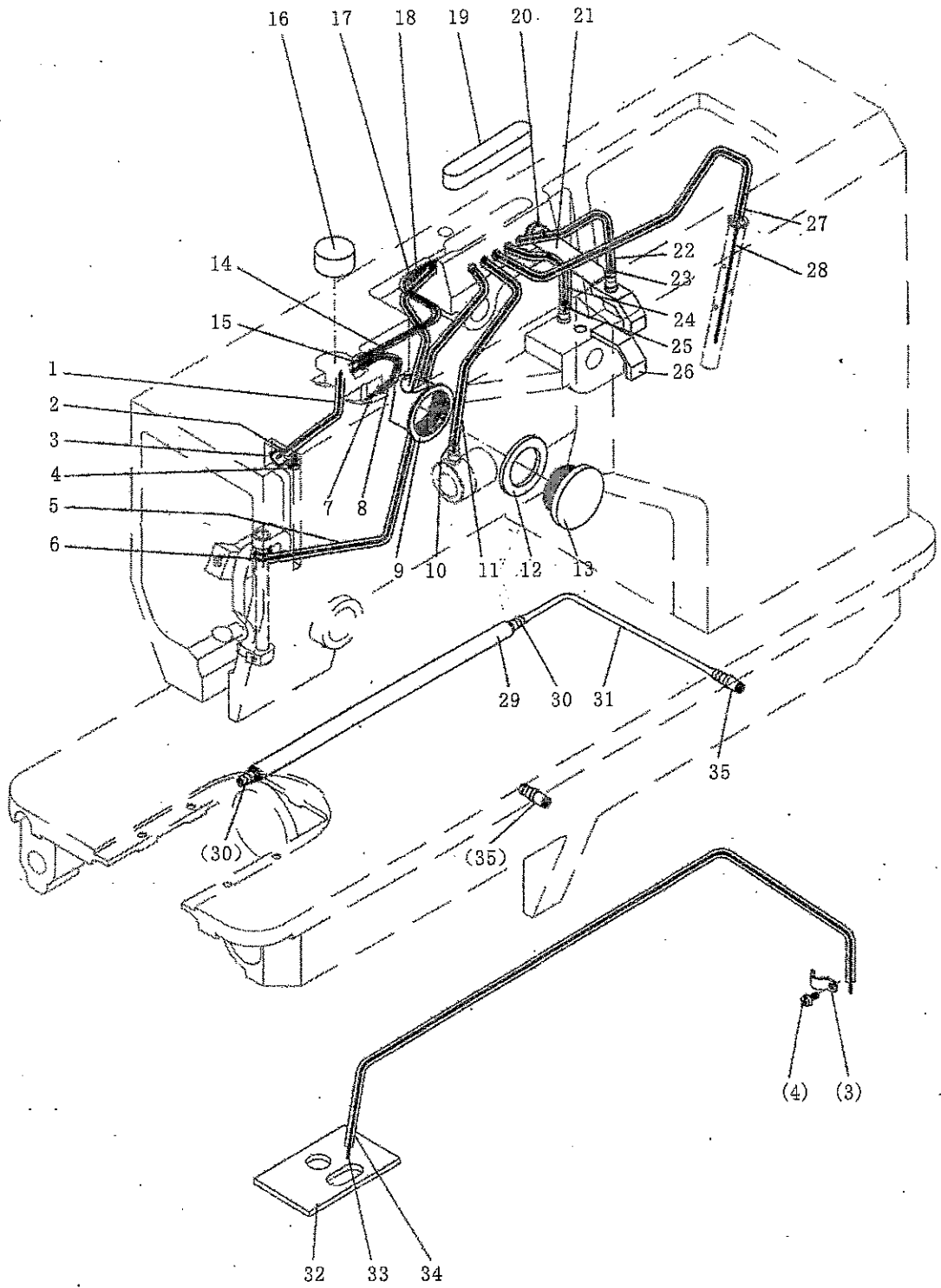
H. Thread trimming parts



H. Thread trimming parts

No.	PartNo.	Name	Qty.		Remark
			82800	82800-D	
H38	7.02.15.098	Thread trimming vibrating crank stopper screw		1	M4×20
H39	7.02.05.173	Thread trimming link lever (right)		1	
H40	7.02.10.140	Thread trimming link lever pin		2	
H41	7.02.10.141	Thread trimming link and vibrating lever pin		1	
H42	7.02.08.039	Thread trimming link and vibrating lever pin bushing		1	
H43	7.02.05.177	Thread trimming link and vibrating lever		1	
H44	7.02.05.093	Thread trimming link lever tie-in		2	
H45	7.02.10.193	Thread trimming link lever joint lever		1	
H46	7.02.15.622	Thread trimming link lever nut (left)		1	M5(left)
H47	7.02.05.171	Thread trimming link lever (left)		1	
H48	7.02.15.068	Thread trimming link lever nut		1	GB/T6170 M5
H49	7.02.05.174	Thread trimming vibrating lever		1	
H50	7.02.10.143	Thread trimming vibrating lever eccentricity pin		1	
H51	7.02.15.056	Thread trimming vibrating lever eccentricity pin screw		1	M5×6
H52	7.02.15.053	Thread trimming vibrating lever socket setting screw		3	M5×12
H53	7.02.13.074	Thread trimming vibrating lever socket		1	
H54	7.02.10.142	Thread trimming vibrating lever pin		1	
H55	7.02.18.059	Washer		1	
H56	7.02.21.085	E-ring		1	GB/T896-1986-9
H57	7.02.15.102	Movable knife support plate screw		2	M4×6.5
H58	7.02.11.103	Movable knife support plate		1	
H59	7.02.20.030	Movable knife		1	
H60	7.02.11.102	Movable knife guide plate		2	
H61	7.02.15.100	Movable knife guide plate screw		2	M4×4
H62	7.02.15.103	Fixed knife screw		1	
H63	7.02.20.031	Fixed knife		1	
H64	7.02.15.104	Thread trimming pressure adjustive screw		1	
H65	7.02.02.073	Slide plate		1	
H66	7.02.15.388	Slide plate screw		2	M4×8
H67	7.02.15.101	Movable knife assistant support plate screw		2	M3×4
H68	7.02.18.061	Spring washer		2	GB/T93. 3
H69	7.02.11.098	Movable knife assistant support plate		1	
H70		Felt		1	
H71	7.02.17.032	Release lever replacement spring		1	
H72	7.02.01.058	Release lever assy.		1	
H73	7.02.10.145	Release soft-shaft stopper pin		1	
H74	7.02.01.060	Flexible wire assy.		1	

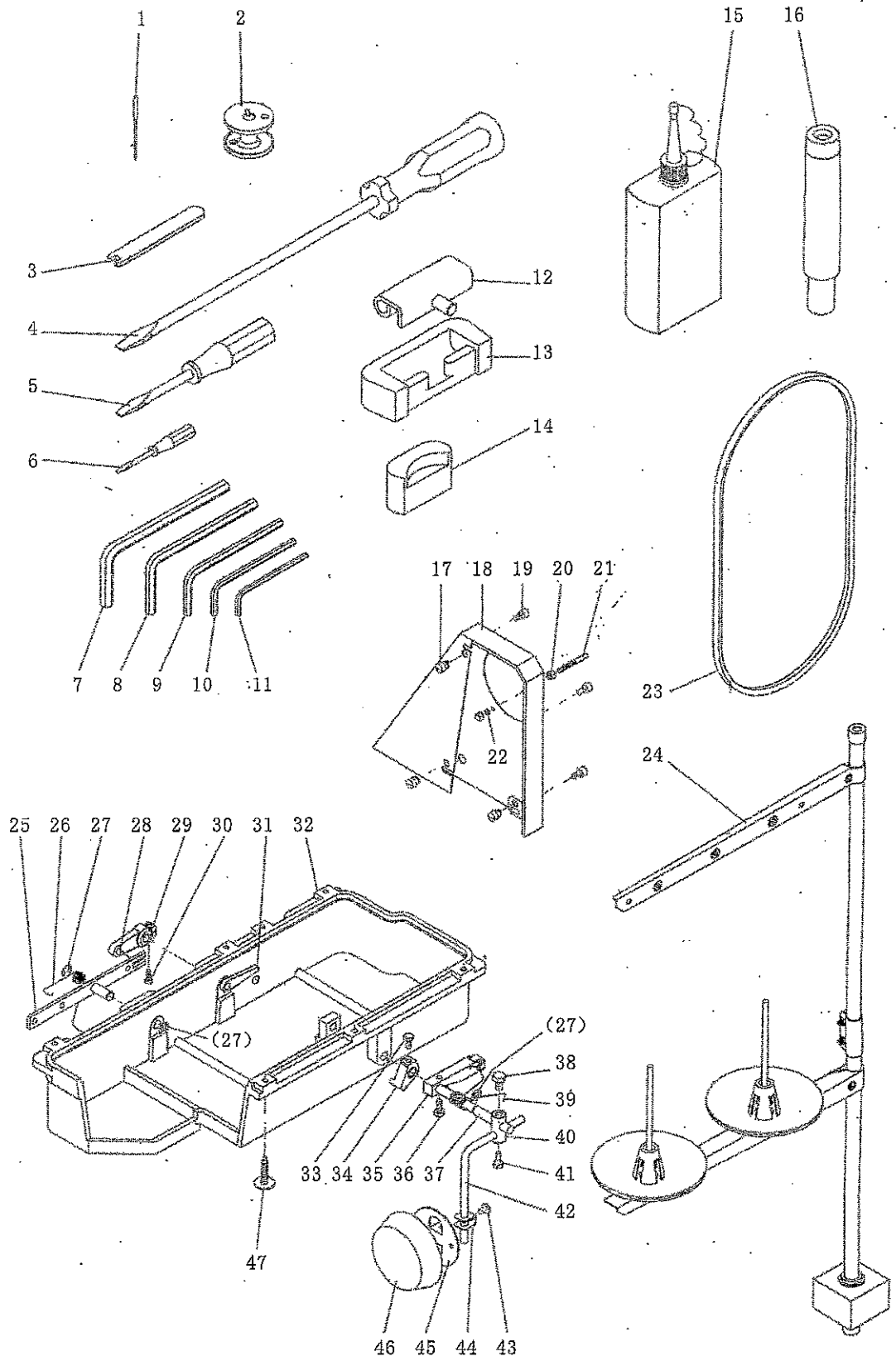
I. Oil lubrication parts



I、 Oil lubrication parts

No.	PartNo.	Name	Qty.		Remark
			82800	82800-D	
I01		Oil tube	1	1	Φ3/Φ5×65mm
I02		Oil wick	1	1	Φ2×140mm
I03	7.02.17.029	Oil tube clip	2	2	
I04	7.02.15.037	Oil tube clip screw	2	2	M3×6
I05		Oil tube	1	1	Φ3/Φ5×200mm
I06		Oil wick	1	1	Φ2×250mm
I07		Oil wick	1	1	Φ2×150mm
I08		Oil tube	1	1	Φ3/Φ5×70mm
I09	7.02.16.070	Oil window	1	1	
I10		Oil wick	1	1	Φ2×200mm
I11		Oil tube	1	1	Φ3/Φ5×130mm
I12	7.02.16.071	Oil window cover washer	1	1	
I13	7.02.16.069	Oil window cover	1	1	
I14		Oil tube	1	1	Φ3/Φ5×110mm
I15		Oil wick	1	1	Φ2×200mm
I16		Felt	2	2	Φ16×12
I17		Oil wick	1	1	Φ3×200mm
I18		Oil tube	1	1	Φ3/Φ5×110mm
I19		Felt	1	1	
I20	7.02.15.044	Oil felt clip screw	1	1	M5×8
I21	7.02.17.093	Oil felt clip	1	1	
I22		Oil tube	1	1	Φ3/Φ5×100mm
I23		Oil wick	1	1	Φ2×180mm
I24		Oil tube	1	1	Φ3/Φ5×100mm
I25		Oil wick	1	1	Φ2×160mm
I26		Felt	1	1	
I27		Oil tube	1	1	Φ3/Φ5×200mm
I28		Oil wick	1	1	Φ2×300mm
I29	7.02.16.073	Coppery oil tube	1	1	
I30	7.02.16.060	Oil spile	2	2	
I31		Oil tube	1	1	Φ3/Φ5×50mm
I32		Felt	1	1	
I33		Oil wick	1	1	Φ2×640mm×2
I34		Oil tube	1	1	Φ3/Φ5×600mm
I35	7.02.16.059	Oil spile	2	2	

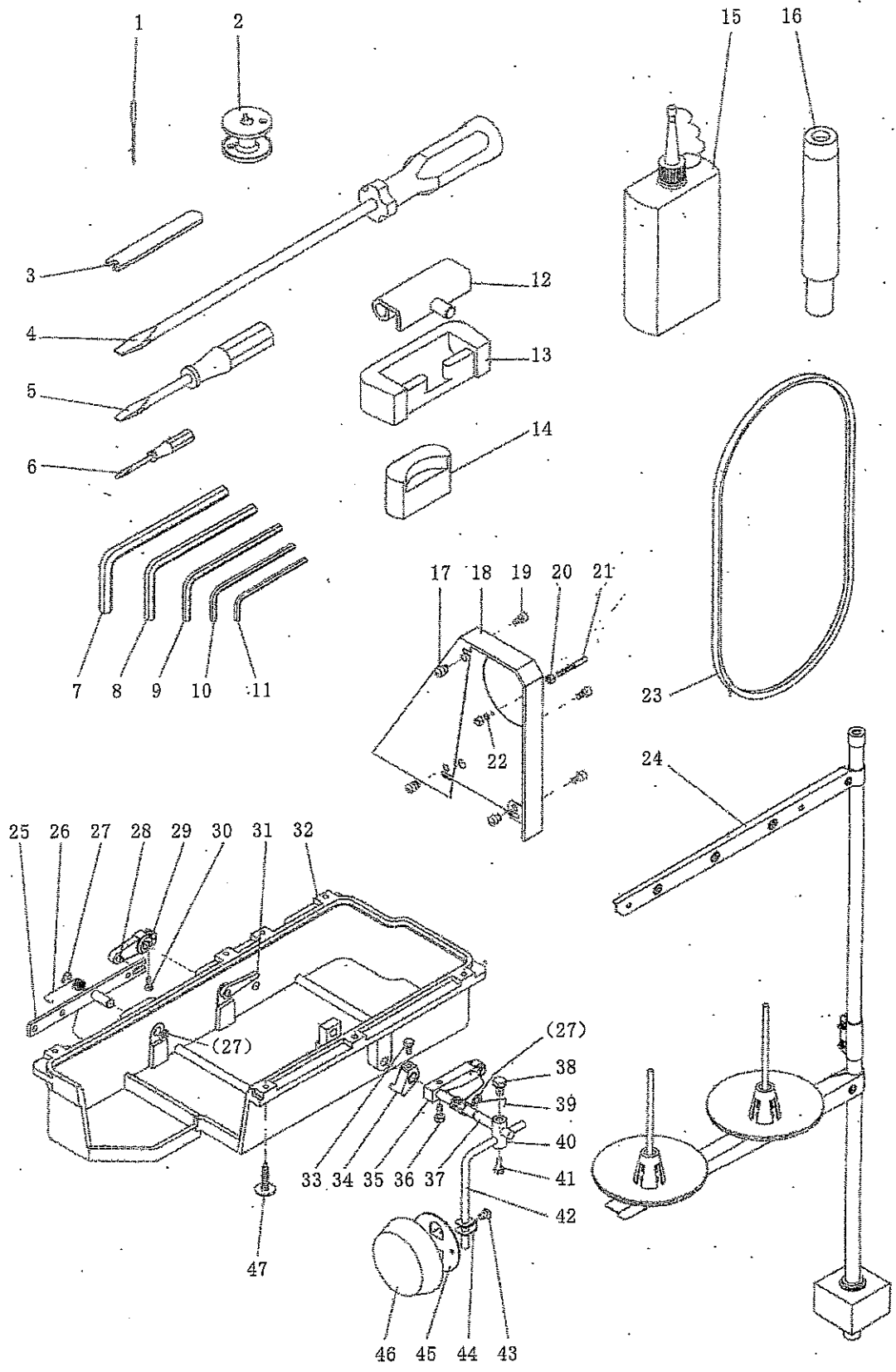
J. Accessories



J. Accessories

No.	PartNo.	Name	Qty.		Remark
			82800	82800-D	
J01	7.02.21.140	Needle	4	4	19#
J02	7.02.21.144	Bobbin	4	4	
J03	7.02.21.142	Open end wrench	1	1	
J04	7.02.21.003	Screw driver (big)	1	1	
J05	7.02.21.002	Screw driver (middle)	1	1	
J06	7.02.21.001	Screw driver (small)	1	1	
J07	7.02.21.238	Hexagonal Wrench		1	6mm
J08	7.02.21.100	Hexagonal Wrench	1	1	5mm
J09	7.02.21.099	Hexagonal Wrench		1	4mm
J10	7.02.20.209	Hexagonal Wrench		1	3mm
J11	7.02.21.299	Hexagonal Wrench		1	2.5mm
J12	7.02.21.080	Hinge	2	2	
J13	7.02.21.079	Hinge cover	2	2	
J14	7.02.21.291	Vibration preventing rubber	2	2	
J15	7.02.21.008	Small oil pot	1	1	
J16	7.02.21.147	Crosstie	1	1	
J17	7.02.18.077	Rubber pad	3	3	
J18	7.02.21.136	Belt cover	1	1	
J19		Belt cover screw	3	3	M6×10
J20	7.02.21.138	Nut	2	2	M5
J21	7.02.21.137	Screw	1	1	
J22	7.02.21.139	Spring washer	1	1	
J23	7.02.21.095	Belt	1	1	
J24	7.02.21.050	Thread stand	1	1	
J25	7.02.21.171	Foot control backstitch lever	1		
J26	7.02.21.172	Replacement spring	1		
J27	7.02.18.021	E-ring	3		GB/T896-1986-9
J28	7.02.21.175	Foot control backstitch crank pin	1		
J29	7.02.21.173	Foot control backstitch crank	1		
J30	7.02.21.174	Foot control backstitch crank screw	1		
J31	7.02.21.176	Knee lifting Lever assy.	1		
J32	7.02.21.164	Oil reservoir	1		
J33	7.02.21.162	Knee lifting orientation block screw	1		
J34	7.02.21.165	Knee lifting orientation block	1		
J35	7.02.21.153	Roller joint	1		
J36		Roller joint screw	1		
J37	7.02.21.168	Straight lever	1		

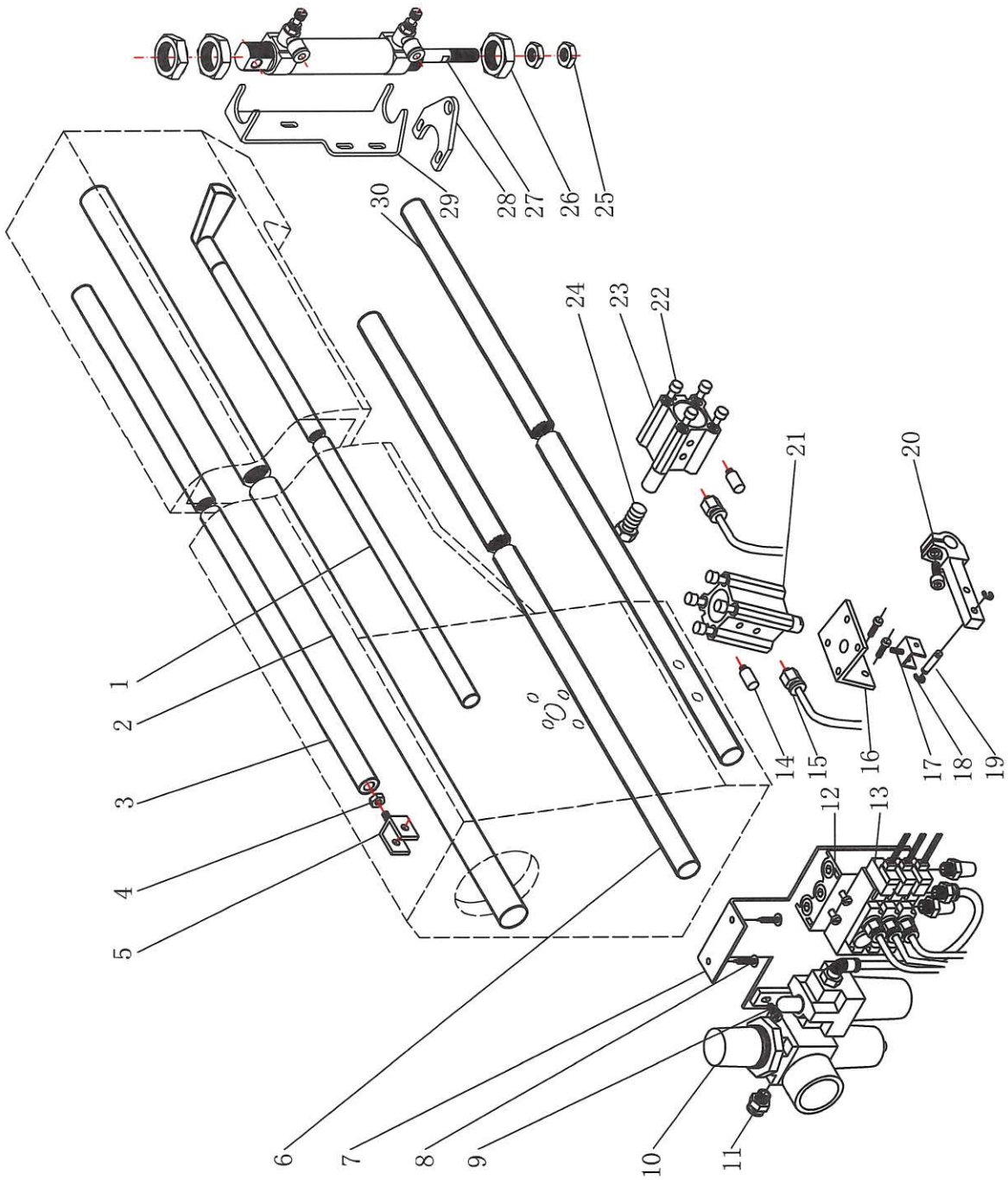
J. Accessories



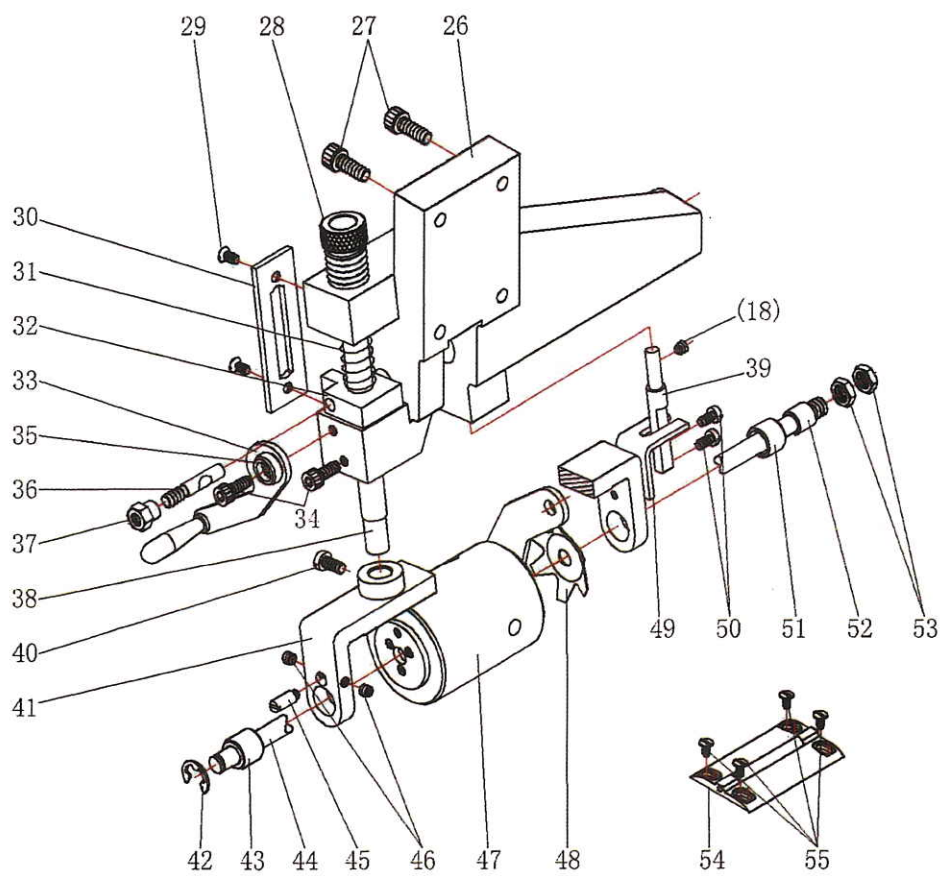
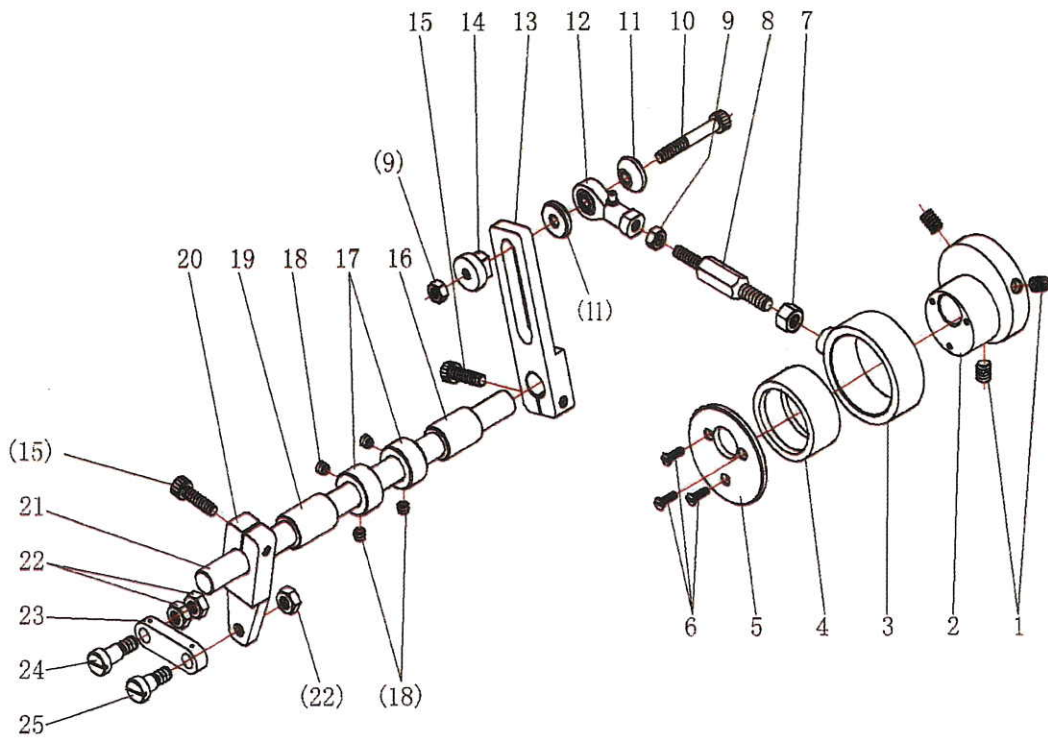
J、Accessories

No.	PartNo.	Name	Qty.		Remark
			82800	82800-D	
J38	7.02.21.150	Straight lever locking screw	1		
J39	7.02.21.167	Replacement spring	1		
J40	7.02.21.169	Bend lever joint	1		
J41	7.02.21.170	Bend lever joint screw	1		
J42	7.02.21.160	Touch block bend lever	1		
J43	7.02.21.070	Touch block bracket screw	1		
J44	7.02.21.069	Touch block bracket	1		
J45	7.02.21.067	Touch block	1		
J46	7.02.21.068	Touch block pad	1		
J47	7.02.21.157	Wooden screw	7	7	

PNEUMATIC PARTS FOR LONG ARM ZIGZAG MACHINE



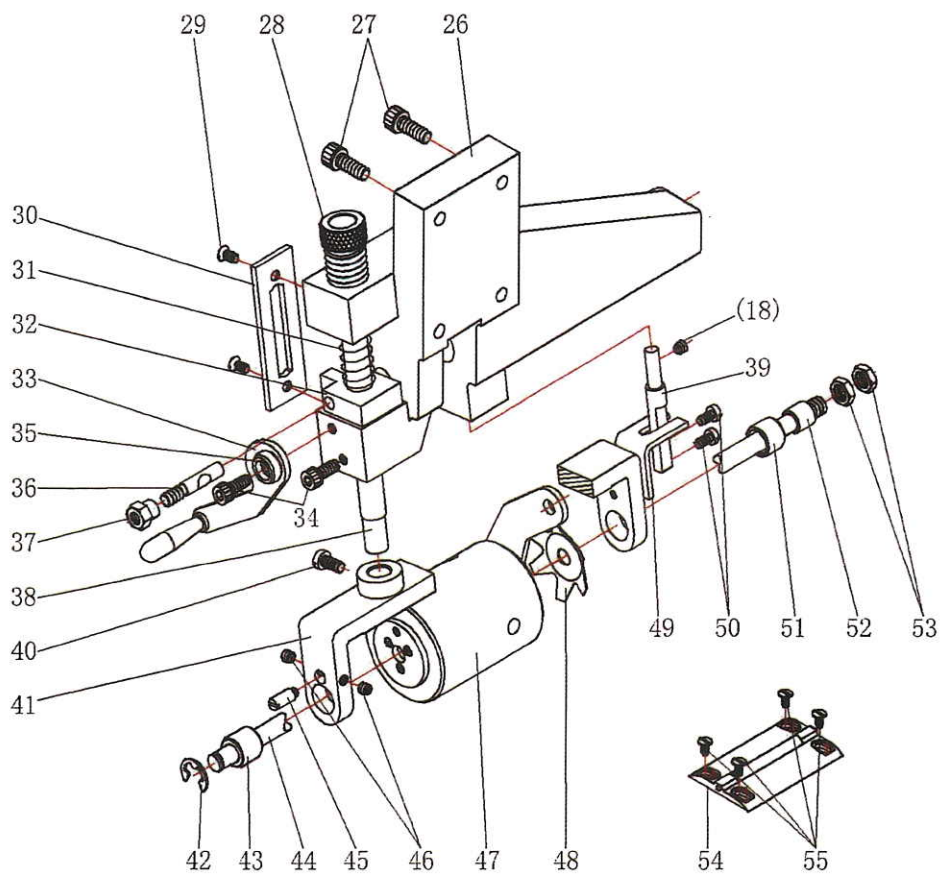
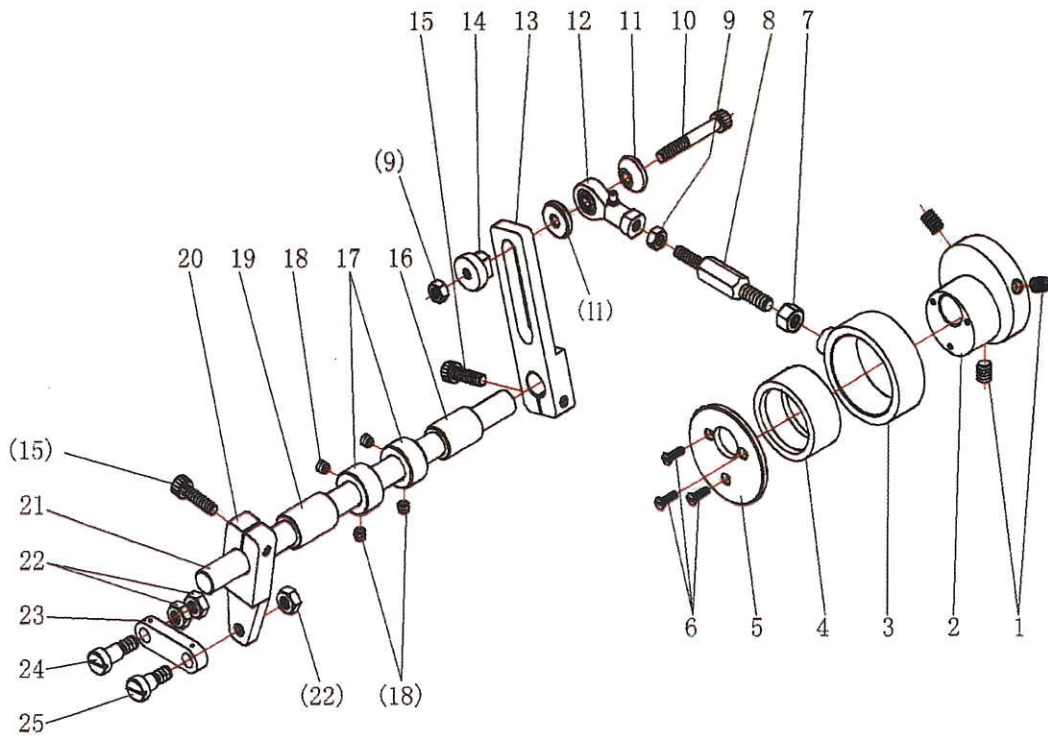
PULLER PARTS



PULLER PARTS

No.	Part No.	Description	Qty.	Remark
01	7.02.15.050	Eccentric wheel screw	3	M6(0.75)×8
02	7.02.06.167	Puller driving eccentric wheel	1	
03	7.02.08.277	Puller driving eccentric wheel bushing	1	
04	7.02.04.072	Bearing	1	HK3012
05	7.02.11.228	Puller driving eccentric wheel flapper	1	
06	7.02.15.658	Flapper screw	3	M3×6
07	7.02.15.659	Eccentric wheel link rod nut	1	
08	7.02.05.219	Eccentric wheel link rod	1	
09	7.02.15.068	Nut	2	GB/T6170 M5
10	7.02.15.655	Adjusting screw	1	M5×35
11	7.02.12.137	Adjusting screw washer block	2	
12	7.02.05.093	Eccentric wheel link rod joint	1	
13	7.02.06.166	Puller driving shaft crank(right)	1	
14	7.02.15.654	Adjusting nut	1	
15	7.02.15.058	Crank screw	2	M5×16
16	7.02.08.276	Puller driving shaft bushing (right)	1	
17	7.02.09.061	Driving shaft collar	2	
18	7.02.15.056	Driving shaft collar screw	5	M5×5
19	7.02.08.276	Puller driving shaft bushing (left)	1	
20	7.02.06.165	Puller driving shaft crank(left)	1	
21	7.02.03.211	Puller driving shaft	1	
22	7.02.15.067	Nut	3	GB/T 6170 M6
23	7.02.05.218	Crank link rod	1	
24	7.02.15.661	Crank link rod screw(lower)	1	
25	7.02.15.662	Crank link rod screw(upper)	1	
26	7.02.13.191	Puller ASSY bracket	1	
27	7.02.15.048	Puller ASSY bracket screw	4	M6×16
28	7.02.15.652	Pressure adjusting screw	1	
29	7.02.15.388	Guide screw	2	M4×8
30	7.02.11.226	Guide	1	
31	7.02.17.260	Pressure adjustingspring	1	
32	7.02.12.136	Puller guide slide block	1	
33	7.02.01.156	Puller lifting spanner	1	
34	7.02.08.278	Puller lifting spanner bushing	1	
35	7.02.15.053	Puller lifting spanner screw	2	M5×12
36	7.02.15.653	Guide slide block bolt	1	
37	7.02.15.656	Guide slide block locking nut	1	
38	7.02.03.211	Puller link shaft	1	

PULLER PARTS



PULLER PARTS

No.	Part No.	Description	Qty.	Remark
39	7.02.10.261	Guide lever	1	
40		Puller link shaft screw	1	M5×10
41		Puller seat	1	
42		E-ring	1	GB/T896-1986-8
43		Puller shaft bushing (left)	1	
44		Puller shaft	1	
45		Locating pin	1	
46	Rubber puller ASSY	Locating pin screw	2	
47	7.02.01.158	Puller	1	
48		Elasticity washer	1	
49		Locating plate	1	
50		Locating plate screw	2	M4×8
51		Puller shaft bushing (right)	1	
52		Puller shaft bushing	1	
53		Puller shaft nut	2	
54	7.02.01.157	Puller supporting seat	1	
55	7.02.15.660	Puller supporting seat screw	4	M3×6

The cams for decorative seams are quickly and easily exchangeable.

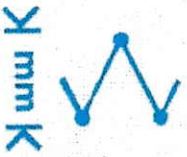
Musterkurven

Pattern cams

Artikel-Nr.

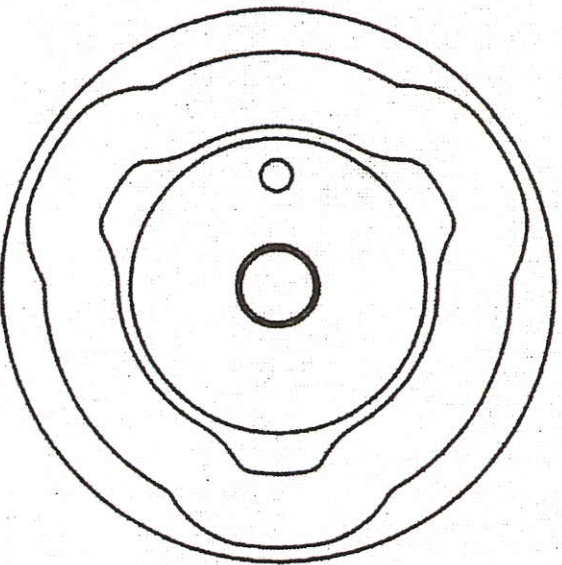
Article-No.

70206059



* = zur Maschinenjustierung

* = for machine adjustment



Musterkurven

Pattern cams

Artikel-Nr.

Article-No.

70206060



4,5 - 10



70206064

3,5 - 6



70206066

4 - 10



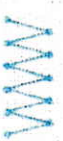
70206067

2 - 5



70206069

3,5 - 6



70206070

4,5 - 10



70206071

4,5 - 10



70206072

3,5 - 6

